

STATEMENT OF QUALIFICATIONS



Where experience and fiscal responsibility come together

5850 Wenninghoff Road

Omaha, NE 68122

Phone (402) 571-8833

Fax (402) 571-7900

520 Nebraska Avenue, Ste 520

Sioux City, IA 51101

Phone (402) 672-3407

Fax (712) 202-1396

22050 185th Street

Council Bluffs, IA 51503

Phone (712) 388-8833

Fax (402) 571-7900

2318 Central Avenue

Kearney, NE 68847

Phone: (308) 293-1739

Fax: (308) 237-3540

alloyspecialty@email.com

TABLE OF CONTENTS

1. **Company Information**
 Background & Future Goals

2. **Company Services**
 Services Directory
 Training Directory
 Laboratory Services

3. **Company Experience**
 Constituent/Client Listing
 Case Illustration of Project Experience

4. **Resumes**
 Primary Personnel
 Individual Project Experience

5. **Insurance**
 Client Coverage
 Example of Certificate



SECTION

1

INTRODUCTION TO ALLOY SPECIALTY:

Alloy Specialty was formed in response to the growth in the environmental field, public health issues, and industrial health and safety industries. Clients are increasingly becoming concerned that regulations are changing too fast to follow, and most consultants/testing laboratories are scrambling to keep up. Alloy was established to help clients meet the regulatory challenges presented by the EPA, OSHA, and each state.

Alloy Specialty's founding principles are to provide the highest level of service and accurate knowledge to our clients. Alloy Specialty will strive to provide the best service at a prevailing and fair market rate for all parties concerned.

At Alloy, a professional experienced staff is prepared to meet these challenges for you. Alloy has proven proficiencies in project management, regulatory interpretation, sample collection, and laboratory analysis. Our business practices combines quality with an appreciation for your budget and financial situation.

As we have moved into the next millenium, Alloy Specialty has established goals and objectives for which we are moving towards. The future goals for Alloy Specialty include: (1) plans to continue its studies in the OSHA field audits; (2) continue our search for more "environmentally friendly" building products; and (3) expansion into the product materials dispersion side for environmentally safe products aimed for the environmental industry.

At Alloy Specialty, we provide our clients greater insight into the regulatory compliance requirements that only experience can provide. Alloy continues to update instrumentation, techniques and procedures to reflect the latest technologies available in the environmental and industrial fields.

Mission Statement

Alloy Specialty was developed to assist our clients in meeting their challenges of today's environmental, safety & health, and general contracting fields. Alloy Specialty's founding principles are based on providing the highest levels of service and knowledge to our clients. Alloy will strive to bring the best service at a prevailing and fair market rate for all parties concerned.



SECTION

2

SERVICE DIRECTORY:

Safety/Compliance Audits

Alloy Specialty can assist in the elimination of lost-time injuries and potential governmental fines by safety management consulting. Our assessments are an in-depth evaluation of your existing safety management system, providing a benchmark of your current performance and a blueprint for the future. Our regulatory compliance audits identify problem areas before OSHA does.

Indoor Air Quality Assessments

If you work in an office building, school, or manufacturing area, chances are high that the air you breathe could be even more polluted than outdoor air. Indoor Air Quality issues can affect such items as employee productivity and attitude. Indoor air quality studies have provided identification for building owners who suffer from lost time due to complaints from individuals who suffer from 'Sick Building Syndrome'. Typical assessments for indoor air problems are usually driven from a building owner, corresponding from employee complaints. While properly maintaining an efficient ventilation system is an activity for building management, Alloy Specialty can assist in addressing and identifying solutions for indoor air problems.

Occupational Environmental Audits

The nature of many chemical environmental hazards has become increasingly complex and difficult for the employer and lay public/employees to comprehend. The federal government has many exposure limits, which must be followed and adhered to. Alloy Specialty uses the EPA's "red book" as its guide to the risk assessment process. The four cornerstones of hazard identification, dose-response assessment, exposure assessment, and risk characterization, are used as a basis for all studies.

Construction Safety Reviews

A construction site can be very hazardous. Alloy Specialty can review or update a company's safety plans to meet either a specific need or an overall program. In addition, Alloy offers to review subcontractor's policies to see if they meet your company needs and liabilities, as they commit to work for you.

Written Safety Plans

Since safety is the responsibility of everyone, from management leadership to employee involvement. Alloy Specialty incorporates all parties of a company into active participants of a safety evaluation, planning and achievement. Alloy makes use of OSHA's Form 33, Safety and Health Program Assessment Worksheet, to assist and evaluate your Safety Program. Alloy Specialty can: (a) review, (b) recommend alternatives/changes, or (c) write safety plans that fit the needs and liabilities of the employer.



Regulatory Compliance Information

Either as an employer, facility owner, or both, there is an overwhelming amount of regulations one must adhere to. It is increasingly difficult to stay current with continually changing governmental agencies' new programs, statements of interpretation, and policy changes. Alloy Specialty can assist you with these challenges by tracking OSHA, EPA, Local City and State agencies and how they affect you.

Asbestos Inspections

NESHAP / AHERA

Building/facility audits are performed for prospective buyers and current building occupants to assess the health and environmental hazards posed by naturally occurring and man-made substances. Alloy has performed numerous surveys of existing structures to locate, identify, and assess potential hazards of asbestos containing material. Typical services that can be selected are:

- Full or Multi-Building Assessments
- Renovations, Required Prior to Start, Specific Building Areas
- Demolition, Required Prior to Start

Lead Inspections

OSHA / EPA

Surveys for lead-based paint, contamination checks for lead dust, air monitoring during and clearance testing after lead abatement are available to address the latest nationwide health threat. This should be completed to protect all employees/contractors working in or around lead-based painted materials, greater than the regulatory limits. Typical services available are:

- XRF Testing
- Dust Sampling
- Paint Sampling
- Air Monitoring/Testing for OSHA Personal, EPA Area or EPA Offsite

Phase I and Transaction Screen Environmental Assessments

The goal of a Phase I Environmental Site Assessment (ESA) is to determine recognized environmental conditions associated with the subject property in accordance with ASTM practice E. "Recognized environmental conditions mean the presence or likely presence of any hazardous substances (or petroleum products) on a property under conditions that indicate an existing release, a past release, or a material threat of a release of any hazardous substances or petroleum products into structures on the property or into the ground, groundwater, or surface water of the property. The term 'recognized environmental conditions' is not intended to include 'de minimis' conditions that generally do not present a material harmful to public health or the environment and that generally would not be the subject of enforcement action if brought to the attention of appropriate government agencies."



LABORATORY SERVICES

At Alloy Specialty, your environmental, health, and safety concerns are our concerns. We make a point of staying up-to-date on the prevailing environmental issues and regulations. Alloy Specialty has the ability to assist the client in achieving regulatory compliance via proper sample collection and transportation to an affiliated laboratory with proper analytical procedures. Each laboratory selected has the vital industry accreditations with qualified analysts with aggressive QC/QA programs. As Alloy grows, the variety of environmental services we provide will grow with us. Alloy is working hard to stay ahead so we can serve you better in the future. The following is a partial list of available laboratory services to help you comply with current regulations.

Indoor Air Quality (IAQ)

As IAQ issues continually increase, Alloy Specialty can collect samples via different methods dependent upon the analysis required or particulate/gas being identified.

Typical types of analysis:

- ◆ Scanning electron microscopic analysis of wipe samples for heavy metal particles and pollen.
- ◆ Optical analysis of airborne particles for type and size
- ◆ Weighed air filter cassettes for weight/volume of total air borne particulates, NIOSH 0500/0600.
- ◆ Transmission Electron Microscopic analysis of airborne-dispersive X-ray and/or electron diffraction.
- ◆ Analysis of airborne photocopier machine toner by SEM analysis and infrared spectroscopy.
- ◆ Mold and fungus analysis. This analysis is for non-visible spores, pollen, and other particulates (i.e., Zefon spore trap, Burkard, Micro-vacuum, tape or bulk samples).

Asbestos

Bulk Samples

- ◆ Analysis by Polarized Light Microscopy (PLM). This sample analysis identifies asbestos in building materials using visual identification.
- ◆ Analysis by Transmission Electron Microscopy (TEM). This sample analysis identifies asbestos in building materials by specific asbestos fiber identification.
- ◆ Point Count Analysis (PLM). Definitive analysis using PLM, which is required by the EPA for any friable sample containing less than 10% asbestos.
- ◆ Analysis by Scanning Electron Microscopy (SEM). In terms of its ability to distinguish asbestos from other fibers, SEM is more sensitive than PCM but less sensitive than TEM. SEM differs from TEM in that the filter substrate mounted on the EM grid is thicker, resulting in a greater scattering of electrons and lower resolution capabilities.



Asbestos (continued)

Air Samples

- ◆ Analysis by Phase Contrast Microscopy (PCM). This sample analysis identifies fibrous materials in the air using fiber count identification.
- ◆ Analysis by Transmission Electron Microscopy (TEM). This sample analysis identifies asbestos specific fibers.
- ◆ Analysis by Scanning Electron Microscopy (SEM).

Lead

Air Samples

- ◆ Analysis by Atomic Absorption Flame. This sample analysis identifies the percentage (%) of airborne lead in air.

Bulk/Chip Samples

- ◆ Analysis by Atomic Absorption Flame. This sample analysis identifies the percentage (%) of lead in painted materials.

Dust/Wipe Samples

- ◆ Analysis by Atomic Absorption Flame. This sample analysis identifies the percentage (%) of lead in dust.

Toxicity Characteristic Leaching Procedure (TCLP)

- ◆ Waste may be categorized as hazardous or non-hazardous by listing of the waste type in the Federal Register or by testing for the four characteristics of hazardous waste which are reactivity, corrosivity, ignitability, and toxicity. The toxicity characteristic is tested using the toxicity characteristic leaching procedure or TCLP. Other testing methodologies also aid in hazardous waste investigations, that Alloy Specialty can provide.

OTHER ANALYTICAL TESTS UPON REQUEST

Alloy Specialty is affiliated with many accredited/insured laboratories for the analytical testing. Alloy Specialty believes in third party, unbiased, laboratory analysis. This gives the client as well as Alloy Specialty the benefits of professional liability coverage and acknowledged accreditation and credentials. Each laboratory selected by Alloy has been screened for proper accreditations, NIOSH approved methodology of analysis, an experienced & trained staff, QC/QA programs, and proper insurance coverage.



SAFETY AND ENVIRONMENTAL TRAINING

HAZARD COMMUNICATION (OSHA 1910.1200)

Required for all employees and supervisors who handle or may become accidentally exposed to hazardous materials. Called the Right To Know program, the curriculum covers proper handling and use of hazardous materials; employee/employer responsibilities; regulations; classes of chemicals; physical and health hazards, and the acquisition and understanding of Material Safety Data Sheets.

RESPIRATORY PROTECTION (OSHA 1910.134)

Designed to fulfill training requirements on the need, selection, uses, and cares of employee respiratory protection. The overview introduces workers, supervisors, and small business owners to compliance requirements of existing protection standards, along with a discussion of filter penetration, particle concentrations, and fit factors. Includes a qualitative fit-test of student respiratory equipment for those medically qualified.

CONFINED SPACE ENTRY (OSHA 1910.146)

Offered in compliance of training mandates in OSHA's regulation to improve confined space safety and rescue procedures. Whether your program is established or in preparation, this class will make your efforts more effective. Curriculum covers definitions, hazards, entry programs and permits, monitoring equipment, lockout/tagout, personal protective equipment, and respiratory protection.

ASBESTOS AWARENESS (OSHA 1910. 1001/1926.1101)

This two-hour training is designed for All House Cleaning Staff, school custodians, building owners, property managers, and/or all interested personnel in facilities containing asbestos. Discussion covers what asbestos is, what it looks like, where it can be found, health hazards involved, legal liabilities, and precautions to take once asbestos is discovered.

ASBESTOS OPERATIONS AND MAINTENANCE:

Under federal regulations, this training is mandatory for all maintenance and janitorial personnel. The two-day (16-hour) class includes an Asbestos Awareness presentation, proper work practices, hands-on practice exercises, health considerations, and personal protection. The course also has a yearly refresher of four hours per year. The course meets EPA/AHERA and OSHA requirements.

POLLUTION PREVENTION:

As waste disposal costs rise, more attention is focused on waste reduction and recycling as cost control methods. This introductory seminar discusses economics of waste reduction, recycling basics, waste audit forms and recycled content products with an emphasis on local resources.



INDOOR ENVIRONMENTAL QUALITY AWARENESS

This class is intended for building owners/managers, facilities maintenance personnel and health/safety professionals. IEQ focuses on the topics building design, materials and furnishings, ventilation, internal factors (VOC, bacteria) and external factors (natural and manufactured pollutants).

ENVIRONMENTAL REGULATORY REVIEW

Designed for facility personnel who wish to gain an understanding of the wide range and scope of environmental laws affecting their industry. The course is intended to provide a foundation for detailed compliance training and implementation efforts. The course is also recommended for newly-assigned environmental program personnel as well as administrative, financial, and facility managers. Curriculum includes: principles of RCRA hazardous waste requirements, Superfund laws (CERCLA), Clean Air Act Amendments, Clean water Act, Emergency planning and Community Right to Know Act EPCRA, Pollution Prevention Act, HM 181 requirements, and state/local counterparts to these programs.

Environmental Law Federal regulations govern air, water, soil, etc., with a legal impact on both public and private business sectors. In our litigious society, ignorance of the law is no excuse. This is a 16 hour course and covers environmental regulations, compliance to air quality, lead/asbestos/PCBs; solid waste, hazardous waste disposal, underground storage tanks, surface water quality, regulatory enforcement, private litigation, and much more.

ERGONOMICS IN THE WORKPLACE

Human factors engineering (“Making the workplace fit the worker”) can result in improved employee morale that translates to increased productivity, lower incident reports, and diminished insurance rates. This course offers an overview of how body mechanics can be made efficient through workplace engineering.

*Supplementary Class Offerings Available
Please Contact Alloy Specialty for Additional Titles and Times*



SECTION

3

CONSTITUENT/CLIENT LIST:

INDUSTRIAL/MANUFACTURING

Lucent Technologies
Terra Industries
Iowa, Arkansas, Oklahoma, Texas
Beaumont Methanol Limited Partnership
Union Pacific Railroad
IBP, Inc.

HEALTH

Lakes Regional Health Systems
Spirit Lake, IA
Nebraska Health Systems
Shenandoah Memorial Hospital
Bishop Clarkson Hospital
Memorial Health Care Systems
Seward Memorial Hospital
ASH East & ASH West

COMMERCIAL/PROPERTY MANAGEMENT

Lund Company

MUNICIPALITY/GOVERNMENT

USDA	State of Nebraska
HUD	Housing Authorities (NE/IA/SD/MN/MO)
City of Sioux City	City of Omaha
State of Iowa	Mid-Nebraska Community Service

EDUCATION

Kearney Public Schools	Lewis Central Community Schools
Omaha Public Schools	Sioux City Community Schools

INSURANCE PROVIDERS

Ameritas Life Insurance Corp.

FINANCIAL/BANKING

1 ST National Bank of Omaha	US Bank
--	---------

PROFESSIONAL SERVICES

Jacobson-Helgoth Consultants	CMB, Architects
Geotechnical Services, Inc.	HDR, Inc.
Theile Geotechnical Services	

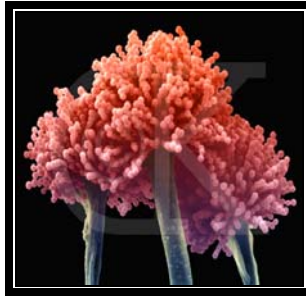
Note: Alloy Specialty reserves the right to withhold client names due to confidentiality agreements with aforementioned clients. The companies listed above have agreed to appear on this listing.



INDOOR AIR QUALITY PROJECTS



Yeast Mold



Black Mold



Mycelium Mold



Indoor Air Quality Facility Review

Ameritas Building
Lincoln, Nebraska

Overview:

Alloy Specialty conducted an Indoor Air Quality assessment at the Ameritas Insurance Corporate Building in Lincoln, Nebraska. The facility had identifiable sources and reportable levels of molds, nuisance dusts, and assorted air particulates. Alloy Specialty assisted Ameritas in formulating a simple program to eliminate these concerns.



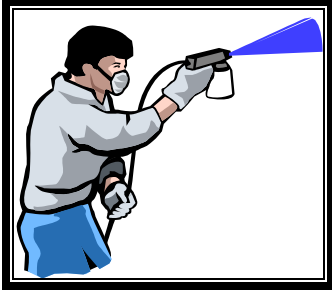
Indoor Air Quality Facility Review

**First National Bank's Operation
Center Building**
Omaha, Nebraska

Overview:

Alloy Specialty conducted an Indoor Air Quality emergency response assessment at the First National Bank's Operation Center Building in Omaha, Nebraska. The facility had detectable odors disturbing employees and their productivity. Alloy Specialty assisted the building's management company in identifying and determining levels of gas, and calming employee concerns.

LEAD-BASED PAINT PROJECTS



*Lead-Based Paints
& Primers*



*Equipment Covered
Lead-Based Coatings*



*Retired Trains Covered
with Lead-Based Paint*



Facility Identification Survey for Lead-based Painted Surfaces/ Equipment

Terra Industries
Terra Nitrogen
Blytheville, Arkansas

Overview:

Alloy Specialty completed a comprehensive surface-by-surface lead-based paint facility audit. The Blytheville Plant's Nitrogen, Urea, Loading Stations for Rails, Trucks & Barges, Storage, and Maintenance areas were included. Survey was conducted by use of a portable XRF unit, which made use of non-destructive sampling methods.



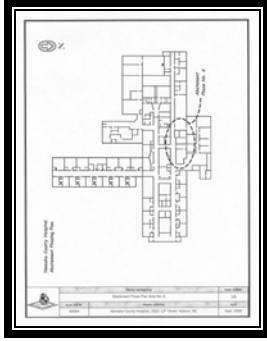
Facility Identification Survey for Lead-based Painted Surfaces/ Equipment

Beaumont Methanol Limited Partnership
LaPorte, Texas

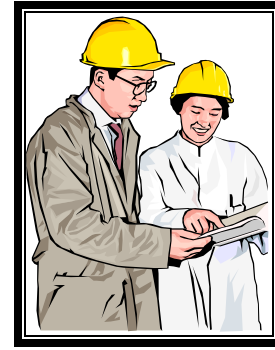
Overview:

Alloy Specialty completed a comprehensive surface-by-surface lead-based paint facility audit. The Beaumont Plant's Methanol, Loading Stations for Rails, Trucks & Barges, Storage, and Maintenance areas were included. Survey was conducted by use of a portable XRF unit, which made use of non-destructive sampling methods.

EDUCATION & CADD PROJECTS



Computer Aided Drawings



Teaching In and Out of the Classroom

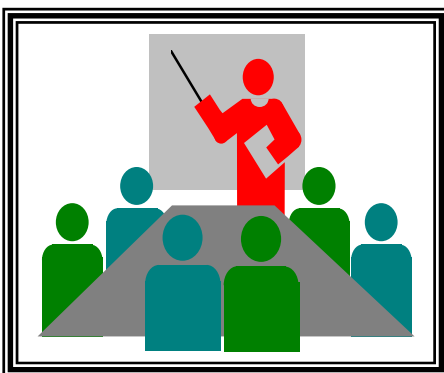


Computer Aided Drawing Transitions for Engineering Division's Asbestos Program

**Lucent Technologies
Omaha Works Plant
Omaha, Nebraska**

Overview:

Alloy Specialty completed a comprehensive file conversion project from MicroStation to AutoCad version 14. Lucent technologies required assistance in updating it information in its Asbestos Records Program. The program had not operated correctly and was not fulfilling Lucent's regulatory needs.



Occupational Instruction/ Training

Iowa Western Community College

**Council Bluffs Campus
& Off-Site Locations**

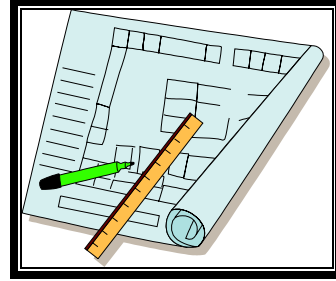
Overview:

Alloy Specialty has conducted training classes for Iowa Western Community College at its main campus site and off-site locations. Classes have been conducted for Asbestos Awareness to General Occupational Safety. Alloy Specialty appreciates the financial challenges of training costs and can provide classes that can be scheduled to be held "in-house" to keep the costs lower.

FACILITY PROJECTS INVOLVING ASBESTOS



*Identification and
And Remediation*



Abatement Design



Facility Identification Survey for Asbestos Containing Building Materials & Management Plan

**Memorial Health Care Systems
Seward, Nebraska**

Overview:

Alloy Specialty inspected a four building healthcare complex in Seward, Nebraska for the Memorial Health Care Systems. Facilities reviewed included a daycare center, two assisted living buildings, and the hospital. The facility's management also directed Alloy Specialty to write a Management Plan to meet the EPA requirements after completing the facility inspections.



Project Design for Remediation of Asbestos Containing Building Materials

**Nemaha County Hospital
Auburn, Nebraska**

Overview:

Alloy Specialty developed an asbestos remediation project for the renovation project in Auburn, Nebraska for the Nemaha County Hospital. The renovation project was designed to incorporate seven phases over 21 months. The Hospital was operational during the entire abatement project. The facility's management also directed Alloy Specialty to write a Management Plan to meet the EPA requirements after completing the facility inspections.

OCCUPATIONAL EXPOSURE STUDIES



Occupational Exposure Assessment for Trichloroethylene, Trimetallic Anhydride and Toluene

**Airlite Plastics
Omaha, Nebraska**

Overview:

Alloy Specialty conducted Negative Exposure Assessments per the Occupational Safety & Health Administration's General Industry Standard, 29 CFR 1910. These NEA's provided Airlite Plastics' management the documentation and assessment data to meet the regulatory standards.



Occupational Exposure Assessment for Lead

**Nebraska Health Systems
Bishop Clarkson Hospital
Omaha, Nebraska**

Overview:

Alloy Specialty conducted Negative Exposure Assessments per the Occupational Safety & Health Administration's General Industry Standard, 29 CFR 1910. These NEA's provided Nebraska Health Systems' management the documentation and assessment data to meet the regulatory standards.



Occupational Exposure Assessment for Asbestos and Lead

**Terra Industries
Beaumont Methanol Limited Partnership
LaPorte, Texas**

Overview:

Alloy Specialty conducted Negative Exposure Assessments per the Occupational Safety & Health Administration's General Industry Standard, 29 CFR 1910. These NEA's provided Beaumont Methanol's management the documentation and assessment data to meet the regulatory standards.

ENVIRONMENTAL HAZARD STUDIES FOR BUILDING DEMOLITION PROJECTS



National Emissions Hazardous Air Pollutants Survey for Asbestos Containing Building Materials

**Livestock Exchange Bank
Sioux City, Iowa**

Overview:

Alloy Specialty completed a building inspection for the City of Sioux City, Iowa on the former Livestock Exchange Bank. The City purchased the facility and prior to demolition, Alloy Specialty the identified asbestos containing building materials that needed to be addressed and/or remediated prior to razing.



National Emissions Hazardous Air Pollutants Survey for Asbestos Containing Building Materials and Lead-Based Painted Components

**Former Ford Manufacturing Plant
Omaha, Nebraska**

Overview:

Alloy Specialty completed a building inspection for a private concern on the former Ford Manufacturing Plant in downtown Omaha, Nebraska. The facility built in the early 1900's housed one of the original Model 'T' manufacturing plants. It was later converted to a furniture manufacturing facility. A private corporation purchased the facility and was pursuing a major renovation into an apartment complex. Alloy Specialty the identified asbestos containing building materials and lead-based painted building components that needed to be addressed/abated prior to beginning of the project.



National Emissions Hazardous Air Pollutants Survey for Asbestos Containing Building Materials and Lead-Based Painted Components

**Mercy Hospital, Former Mental Health Hospital
Council Bluffs, Iowa**

Overview:

Alloy Specialty completed a building inspection for the Alegent Health System on the former Mercy Hospital in Council Bluffs, IA. The facility built in the early 1940's housed one of the original mental health hospital. Alloy Specialty the identified asbestos containing building materials and lead-based painted building components that needed to be addressed/abated prior to beginning of the project.

ENVIRONMENTAL HAZARD REMEDIATION OVERSIGHT FOR PROJECTS



Project Management/ Facility Remediation

Terra Industries

Terra Nitrogen
Port Neal, Iowa

Overview:

Alloy Specialty's staff (during a previous employment venture) managed the Terra Nitrogen asbestos/lead identification and remediation during the reconstruction. Site staff managed a 60 member staff during a 24-hour day re-construction of a 20-acre facility. Other services included overseeing of the on-site laboratory, coordinating and directing two remediation contractors. Also administering the directives from M.W. Kellogg and Terra Industries' design teams in their rebuilding efforts.

- ④ Industrial/ Manufacturing
- ④ OSHA exposure assessment for remediation & non-remediation contractors. Over 3,600 individual assessments were conducted in a 4-month study.
- ④ Facility Identification survey for asbestos containing materials. Over 5 linear miles of piping were tested and identified.
- ④ A plot soil dispersion-sampling scheme for asbestos was conducted. All interior plant areas and a 1/4-mile exterior plant perimeter were sampled, cataloged, and objectives achieved.
- ④ A dust fallout-sampling scheme for asbestos was conducted. Scanning Electron Microscopy analyzed all dust samples.

SECTION

4

KEY PERSONNEL

Two of the major benefits in working with Alloy Specialty are in the professionalism and experience of our staff that will be working with your company directly. Even with all of the high tech products, it still comes down to servicing the client. At Alloy Specialty, the ownership is who you want to work with, and that is what you can count on. The general partners of Alloy Specialty bring a wealth of differing backgrounds, which presents a comprehensive service package. Alloy prides itself in integrating into our client's established operating procedures and company policies without "becoming a sore thumb".



LAWRENCE R. AFFIELD

Position

Environmental Professional, General Partner

Experience Summary

Combined experience of eighteen (18) years in the field of Industrial and Environmental Health and Safety. Extensive field experience includes sampling for various industrial and environmental hazards, designing sampling schemes, exposure reduction design, asbestos hazard assessment surveys, asbestos abatement project design and monitoring. Previous industry exposures involve Engineering Inspector for the Minneapolis-based CertainTeed Corporation, State of Minnesota Department of Transportation, and the Minnesotan Arctic Enterprise for industrial production.

Professional Training and Certification

- ◆ AIHA Asbestos Analysts Registry (ID # 3375)
- ◆ Operation Certificate: XRF PDG Lead Paint Analyzer (1991)
- ◆ Operation Certificate: XRF RMD Lead Paint Analyzer (1994)
- ◆ Operation Certificate: XRF Niton Lead Paint Analyzer (1998)
- ◆ State of Louisiana Department of Health Asbestos Control Program – Asbestos Inspector
- ◆ State of Nebraska Department of Health Asbestos Control Program – Asbestos Inspector, Project Designer, Project Supervisor
- ◆ State of Missouri Department of Health Asbestos Control Program – Project Supervisor
- ◆ State of South Dakota Department of Health Asbestos Control Program – Project Designer, Project Supervisor

Education

Bemidji State University Bemidji, MN
Bachelor of Science: Engineering (major), Construction Mgt (minor)

Continuing Education

- ◆ USEPA AHERA Contractor/Supervisor Training
- ◆ USEPA AHERA Asbestos Project Design Course
- ◆ 40-Hour OSHA/RCRA Hazardous Waste Safety Training Course
- ◆ Sampling and Evaluating Airborne Asbestos Dust 582E
- ◆ USEPA AHERA Inspector/Management Planner Training
- ◆ Construction Quality Management for Contractors issued by US Army Corps of Engineers
- ◆ Lead Inspector – Department of Health, Iowa



Personal Project Experience for Lawrence R. Affield

Healthcare:

- Bergan Mercy Hospital *(Omaha, Nebraska)*
- Bishop Clarkson Memorial Hospital *(Omaha, Nebraska)*
- Marion Health Center *(Sioux City, Iowa)*
- Memorial Community Hospital *(Blair, Nebraska)*
- Schofield Army Medical Clinics *(Oahu, Hawaii)*
- University of Nebraska Medical Center *(Omaha, Nebraska)*
- Douglas County Hospital *(Omaha, Nebraska)*
- Masonic Home *(Plattsmouth, Nebraska)*
- Northview Villa Nursing Home *(Omaha, Nebraska)*

Commercial:

- AT&T Communications *(Omaha, Nebraska)*
- FirstTier Banks *(Multiple sites)*
- Pamida Company *(Omaha, Nebraska)*
- Raterman Group, LTD *(Chicago, Illinois)*
- Twin Tower Realty *(Omaha, Nebraska)*
- Valley West Mall *(West Des Moines, Iowa)*
- LT&T *(Lincoln, Nebraska)*

Government:

- City of Lincoln *(Lincoln, Nebraska)*
- City of Omaha *(Omaha, Nebraska)*
- Dodge County *(Fremont, Nebraska)*
- Nebraska Air National Guard *(Lincoln, Nebraska)*
- Nebraska Department Environmental Quality *(Omaha, Nebraska)*
- Omaha Housing Authority *(Omaha, Nebraska)*
- Offutt Air Force Base *(Offutt AFB, Nebraska)*
- US Naval Reserve *(Omaha, Nebraska)*

Industrial:

- Burlington Northern Railroad *(Multiple sites)*
- IBP, Inc. *(Multiple sites)*
- Union Pacific Railroad *(Multiple sites)*
- Jayhawk Box *(Fremont, Nebraska)*
- Pamida Warehouse *(Omaha, Nebraska)*
- Union Carbide Corporation *(Red Oak, Iowa)*
- Flemming Foods *(Lincoln, Nebraska)*
- Rainbow Bread Company *(Multiple sites)*
- The Dial Corporation *(Omaha, Nebraska)*

Utilities:

- Kansas City Power & Light *(Kansas City, Missouri)*
- Omaha Public Power District *(Omaha, Nebraska)*
- Spencer Utilities *(Spencer, Iowa)*

Non-Profit Organizations:

- St. Joan of Arc *(Omaha, Nebraska)*
- Archdiocese of Omaha *(Omaha, Nebraska)*
- Notre Dame Center *(Omaha, Nebraska)*
- Western Heritage Museum *(Omaha, Nebraska)*
- Emmy Giford Children's Theater *(Omaha, Nebraska)*
- The Rose Children's Theater *(Omaha, Nebraska)*
- Goodwill Industries *(Omaha, Nebraska)*

Educational:

- University of Nebraska at Lincoln *(Lincoln, Nebraska)*
- University of Nebraska at Omaha *(Omaha, Nebraska)*
- University of Nebraska at Kearney *(Kearney, Nebraska)*
- Hastings College *(Hastings, Nebraska)*
- Westside Community Schools *(Omaha, Nebraska)*
- Omaha Public Schools *(Omaha, Nebraska)*
- Norfolk Public Schools *(Norfolk, Nebraska)*
- Lincoln Public Schools *(Lincoln, Nebraska)*



DARWIN D. ROHDE

Position

Environmental Professional , General Partner

Experience Summary

Combined experience of fifteen (15) years in the field of Industrial and Environmental Health and Safety. Extensive experience in specification development and coordination with A/E firms, technical report & facility management plan writing. Field experience includes sampling for various industrial and environmental hazards, designing sampling schemes, exposure reduction design, asbestos hazard assessment surveys, asbestos abatement project design and monitoring.

Previous work experience includes an agricultural and retail chemical specialist for a chemical company, USDA representative, and a construction/maintenance supervisor for a municipal city government division.

Professional Training and Certification

- ◆ State of Iowa, Asbestos Inspector, Management Planner
- ◆ State of Nebraska Department of Health Asbestos Control Program – Asbestos Inspector, Management Planner
- ◆ Operation Certificate: XRF PDG Lead Paint Analyzer (1991)
- ◆ Operation Certificate: XRF RMD Lead Paint Analyzer (1994)
- ◆ Operation Certificate: XRF Niton Lead Paint Analyzer (1998)
- ◆ State of Louisiana Department of Health Asbestos Control Program – Asbestos Inspector
- ◆ AIHA Asbestos Analysts Registry
- ◆ State of Missouri Department of Health Asbestos Control Program – Inspector
- ◆

Education

Bellevue University, Bellevue, Nebraska
Bachelor of Science: Business Administration, Technical Studies Emphasis

Continuing Education

- ◆ USEPA AHERA Inspector Training
- ◆ USEPA AHERA Asbestos Management Planner Course
- ◆ 40-Hour OSHA/RCRA Hazardous Waste Safety Training Course
- ◆ Sampling and Evaluating Airborne Asbestos Dust 582E
- ◆ Lead Inspector – Department of Health, Iowa



Personal Project Experience for Darwin D. Rohde

Healthcare:

- Beatrice State Development Center *(Beatrice, Nebraska)*
- Bergan Mercy Hospital *(Omaha, Nebraska)*
- Bishop Clarkson Memorial Hospital *(Omaha, Nebraska)*
- Memorial Community Hospital *(Blair, Nebraska)*
- University of Nebraska Medical Center *(Omaha, Nebraska)*
- Douglas County Hospital *(Omaha, Nebraska)*
- Northview Villa Nursing Home *(Omaha, Nebraska)*

Commercial:

- AT&T Communications *(Omaha, Nebraska)*
- Astro Theater *(Omaha, Nebraska)*
- First Tier Banks *(Multiple sites)*
- Investors Realty *(Omaha, Nebraska)*
- Lund Company *(Omaha, Nebraska)*
- Twin Tower Realty *(Omaha, Nebraska)*
- Valley West Mall *(West Des Moines, Iowa)*
- LT&T *(Lincoln, Nebraska)*

Government:

- City of Lincoln *(Lincoln, Nebraska)*
- City of Omaha *(Omaha, Nebraska)*
- City of Sioux City *(Sioux City, Iowa)*
- GSA-Federal Building *(Omaha, Nebraska)*
- Nebraska Air National Guard *(Lincoln, Nebraska)*
- Nebraska Department Environmental Quality *(Omaha, Nebraska)*
- Omaha Housing Authority *(Omaha, Nebraska)*
- Offut Air Force Base *(Offut AFB, Nebraska)*

Industrial:

- Burlington Northern Railroad *(Multiple sites)*
- IBP, Inc. *(Multiple sites)*
- Union Pacific Railroad *(Multiple sites)*
- AT&T Network Systems *(Omaha, Nebraska)*
- The Dial Corporation *(Omaha, Nebraska)*

Utilities:

- Omaha Public Power District *(Omaha, Nebraska)*

Non-Profit Organizations:

- St. Joan of Arc *(Omaha, Nebraska)*
- Archdiocese of Omaha *(Omaha, Nebraska)*
- Notre Dame Center *(Omaha, Nebraska)*
- Western Heritage Museum *(Omaha, Nebraska)*
- Emmy Giford Children's Theater *(Omaha, Nebraska)*
- The Rose Children's Theater *(Omaha, Nebraska)*
- Goodwill Industries *(Omaha, Nebraska)*

Educational:

- University of Nebraska at Lincoln *(Lincoln, Nebraska)*
- University of Nebraska at Omaha *(Omaha, Nebraska)*
- University of Nebraska at Kearney *(Kearney, Nebraska)*
- Deshler High School *(Deshler, Nebraska)*
- University of Nebraska Medical Center *(Omaha, Nebraska)*
- Westside Community Schools *(Omaha, Nebraska)*
- Omaha Public Schools *(Omaha, Nebraska)*
- Lincoln Public Schools *(Lincoln, Nebraska)*
- Nebraska City Public Schools *(Nebraska City, Nebraska)*
- Kearney Public Schools *(Kearney, Nebraska)*



DR. JOHNNA ROBERTS

Position

Environmental Professional, Chief Operating Officer

Experience Summary

- ◆ Twenty years of experience in Environmental, Health and Safety Compliance and Training (EPA, NEPA, State Programs, D.O.T., F.D.A. and OSHA), including thirteen years in the consulting field. Major areas of responsibility include Hazardous Waste Management, Phase I Environmental Site Assessments, Title V Air Permits, Remedial Action Plans, Environmental Compliance Audits and Plans, Grant Preparation, Historical and Social Impact Studies, Environmental Protection Plans and NEPA Assessments for telecommunication firms. Project Management background includes planning and oversight of Environmental Assessments, scheduling and budgeting for a variety of Environmental and Safety projects, preparation of Health and Safety Plans for NDEQ Oversight projects, Spill Containment and Countermeasure Plans and oversight of NEPA reviews for road construction and telecommunication sites.

Professional Training and Certification

- ◆ Registered Environmental Professional (#5276)

Education

University of Kansas, Lawrence, Kansas

- ◆ Ph.D., Physiology and Cell Biology, Ecology and Biochemistry Emphasis,

University of Oklahoma, Norman, Oklahoma

- ◆ B.S., Zoology, Chemistry Minor

Stephens College, Columbia, Missouri

- ◆ A.A., Biology

Continuing Education

- ◆ 40 Hour Hazardous Waste Operations and Emergency Response (Hazwoper)
- ◆ 8 Hour Annual Hazwoper Refresher Courses
- ◆ Hazard Communication
- ◆ OSHA Construction Supervisor Training
- ◆ Union Pacific Railroad Safety Training
- ◆ Numerous Health and Safety Courses
- ◆ ASSE Leadership Conference
- ◆ HUD Housing Quality Standards
- ◆ Visual Risk Assessor for Lead-Based Paint
- ◆ HUD Environmental Workshop



Personal Project Experience for Dr. Johnna Roberts

Municipal:

- Senior Professional responsible for the preparation of Remedial Action Plans and Reports for the Riverfront Redevelopment Project City of Omaha, Nebraska.
- Site Observation and Field Analysis, Qwest Convention Center and Arena, City of Omaha, Nebraska
- Lead Remediation, Indoor Firing Range, City of Grand Island, Nebraska

State:

- Nebraska Department of Economic Development, Phase I Environmental Site Assessments
- Nebraska Department of Environmental Quality, Project Manager, Investigation and Remediation of Petroleum-Impacted Sites

Federal:

- Project Manager for Environmental Protection Plan, Camp Ashland, Nebraska, U.S. Army Corps of Engineers.
- Remediation of Firing Range, Cornhusker Army Ammunition Plant (Superfund Site), Grand Island, Nebraska
- Environmental Assessments for FCC, USPS, HUD and Farm Service Agency

Industrial:

- Project Manager responsible for disposal of hazardous waste for multiple projects.
- Program Manager/Regulatory Compliance in charge of preparing Title V Operating and Construction Permits, Air Emission Inventories, Spill Containment and Countermeasure Plans, NEPA Assessments and Reviews, Environmental Assessments and Review of Environmental Project Reports.
- Phase I Environmental Assessments, wide range of industrial clients

Health and Safety:

- Project Manager responsible for developing Health and Safety Plan of Remediation of Asarco Hazardous Waste Site project with NDEQ oversight.
- Project Manager responsible for OSHA Compliance and Early Return to Work Programs in coordination with Workman's Compensation and Insurance Programs.
- Technical Director responsible for Laboratory Safety, Environmental Compliance and Supervision.

Training Courses Taught:

- 8-Hour Hazwoper Refresher Course
- Lozier Safety Program
- Registered Environmental Professional (#5276)
- HUD Housing Quality Standards
- Lock-Tag Out, Confined Space, Trenching and Shoring, Electrical Safety, Hazard Communication, Fall Protection and Medical Surveillance Program.

Research:

- Coordinator for Grant and Contract Administration in charge of reviewing and evaluating potential funding sources. Responsibilities included updating, editing, and revising grant applications. Acted as Liaison between research groups.
- Product Safety Coordinator and Research Scientist responsible for OSHA, EPA and F.D.A, compliance and product safety testing. Responsibilities included developing and implementing RCRA Hazardous Waste Program and OSHA and EPA Compliance Programs.



SCOTT P. SELKEN

Position

Environmental Professional, Director of Operations

Experience Summary

Combined experience of ten (10) years in the field of Industrial and Environmental Health and Safety. Extensive field experience includes sampling for various industrial and environmental hazards, designing sampling schemes, exposure reduction design, asbestos hazard assessment surveys, asbestos abatement project design and monitoring.

Professional Training and Certification

- ◆ AIHA Asbestos Analysts Registry
- ◆ Operation Certificate: XRF RMD Lead Paint Analyzer (1997)
- ◆ Operation Certificate: XRF Niton Lead Paint Analyzer (2002)
- ◆ State of Iowa Department of Health Asbestos Control Program – Asbestos Inspector
- ◆ State of Nebraska Department of Health Asbestos Control Program – Asbestos Inspector

Education

University of Nebraska, Omaha
Bachelor of Science: Environmental Sciences

Continuing Education

- ◆ USEPA AHERA Inspector Training
- ◆ USEPA AHERA Operations & Maintenance Course
- ◆ 40-Hour OSHA/RCRA Hazardous Waste Safety Training Course
- ◆ Sampling and Evaluating Airborne Asbestos Dust 582E
- ◆ Construction Quality Management for Contractors issued by US Army Corps of Engineers
- ◆ Lead Inspector – Department of Health, Iowa
- ◆ Microbiology Remediation Training Course



DANIEL GREGORY

Position

Environmental Professional, Regional Director

Experience Summary

Combined experience of two (2) years in the field of Industrial and Environmental Health and Safety. Field experience includes sampling for various industrial and environmental hazards, designing sampling schemes, exposure reduction design, asbestos hazard assessment surveys, asbestos abatement project design and monitoring.

Professional Training and Certification

- ◆ Operation Certificate: XRF Niton Lead Paint Analyzer (2005)
- ◆ State of Iowa Department of Health Asbestos Control Program – Asbestos Inspector
- ◆ State of Nebraska Department of Health Asbestos Control Program – Asbestos Inspector

Education

Central Community College, Council Bluffs, IA
Associate Degree

Continuing Education

- ◆ USEPA AHERA Inspector Training
- ◆ USEPA AHERA Operations & Maintenance Course
- ◆ Sampling and Evaluating Airborne Asbestos Dust 582E
- ◆ Construction Quality Management for Contractors
- ◆ Microbiology Remediation Training Course



TROY HUSEN

Position

Environmental Professional, Regional Director

Experience Summary

Combined experience of seven (7) years in the field of Industrial and Environmental Health and Safety and Construction Industry. Field experience includes sampling for various industrial and environmental hazards, designing sampling schemes, exposure reduction design, asbestos hazard assessment surveys, asbestos abatement project design and monitoring.

Professional Training and Certification

- ◆ Operation Certificate: XRF Niton Lead Paint Analyzer (2005)
- ◆ State of Iowa Department of Health Asbestos Control Program – Asbestos Inspector
- ◆ State of Nebraska Department of Health Asbestos Control Program – Asbestos Inspector

Education

Currently Pursuing Bachelor's Degree in Business
Vermillion, SD

Continuing Education

- ◆ USEPA AHERA Inspector Training
- ◆ USEPA AHERA Operations & Maintenance Course
- ◆ Sampling and Evaluating Airborne Asbestos Dust 582E
- ◆ Construction Quality Management for Contractors
- ◆ Microbiology Remediation Training Course



SECTION

5

INSURANCE:

Alloy Specialty carries complete coverage of general liability, automobile liability and Employers liability. Errors & Omissions policy is a liability insurance policy that provides protection against loss incurred by a client because of some negligent act, error, oversight, or omission by the insured.

Summary

General Aggregate Limit	\$ 2,000,000.00
Products & Completed Operations Aggregate Limit	\$ 2,000,000.00
Personal & Advertising Injury Limit	\$ 2,000,000.00
Contractor Pollution Liability	\$ 2,000,000.00
Claims Made Professional Liability	\$ 2,000,000.00
Hired & Non-Own Auto Liability	\$ 1,000,000.00



ACORD™ CERTIFICATE OF LIABILITY INSURANCE

DATE (MM/DD/YYYY)
12/03/2004

PRODUCER (402) 331-3337
P.J. RAMAEKERS & ASSOC., INC.
7915 L STREET

THIS CERTIFICATE IS ISSUED AS A MATTER OF INFORMATION ONLY AND CONFERS NO RIGHTS UPON THE CERTIFICATE HOLDER. THIS CERTIFICATE DOES NOT AMEND, EXTEND OR ALTER THE COVERAGE AFFORDED BY THE POLICIES BELOW.

OMAHA NE 68127-

INSURERS AFFORDING COVERAGE NAIC #

INSURED
ALLOY SPECIALTY
22050 185th STREET

INSURER A: EVEREST INDEMNITY INS CO
INSURER B:
INSURER C:
INSURER D:
INSURER E:

COUNCIL BLUFFS IA 51503-

COVERAGES

THE POLICIES OF INSURANCE LISTED BELOW HAVE BEEN ISSUED TO THE INSURED NAMED ABOVE FOR THE POLICY PERIOD INDICATED. NOTWITHSTANDING ANY REQUIREMENT, TERM OR CONDITION OF ANY CONTRACT OR OTHER DOCUMENT WITH RESPECT TO WHICH THIS CERTIFICATE MAY BE ISSUED OR MAY PERTAIN, THE INSURANCE AFFORDED BY THE POLICIES DESCRIBED HEREIN IS SUBJECT TO ALL THE TERMS, EXCLUSIONS AND CONDITIONS OF SUCH POLICIES. AGGREGATE LIMITS SHOWN MAY HAVE BEEN REDUCED BY PAID CLAIMS.

INSR LTR	ADD'L INSRD	TYPE OF INSURANCE	POLICY NUMBER	POLICY EFFECTIVE DATE (MM/DD/YY)	POLICY EXPIRATION DATE (MM/DD/YY)	LIMITS
A		GENERAL LIABILITY <input checked="" type="checkbox"/> COMMERCIAL GENERAL LIABILITY <input checked="" type="checkbox"/> CLAIMS MADE <input type="checkbox"/> OCCUR	4000004443-041	10/15/2004	10/15/2005	EACH OCCURRENCE \$ 1,000,000 DAMAGE TO RENTED PREMISES (Ea occurrence) \$ 50,000 MED EXP (Any one person) \$ 5,000 PERSONAL & ADV INJURY \$ 1,000,000 GENERAL AGGREGATE \$ 2,000,000 PRODUCTS - COMP/OP AGG \$ 2,000,000
		GEN'L AGGREGATE LIMIT APPLIES PER: <input checked="" type="checkbox"/> POLICY <input type="checkbox"/> PRO-JECT <input type="checkbox"/> LOC		/ /	/ /	
		AUTOMOBILE LIABILITY <input type="checkbox"/> ANY AUTO <input type="checkbox"/> ALL OWNED AUTOS <input type="checkbox"/> SCHEDULED AUTOS <input type="checkbox"/> HIRED AUTOS <input type="checkbox"/> NON-OWNED AUTOS		/ /	/ /	COMBINED SINGLE LIMIT (Ea accident) \$ BODILY INJURY (Per person) \$ BODILY INJURY (Per accident) \$ PROPERTY DAMAGE (Per accident) \$
		GARAGE LIABILITY <input type="checkbox"/> ANY AUTO		/ /	/ /	AUTO ONLY - EA ACCIDENT \$ OTHER THAN EA ACC \$ AUTO ONLY AGG \$
		EXCESS/UMBRELLA LIABILITY <input type="checkbox"/> OCCUR <input type="checkbox"/> CLAIMS MADE <input type="checkbox"/> DEDUCTIBLE RETENTION \$		/ /	/ /	EACH OCCURRENCE \$ AGGREGATE \$ \$ \$ \$
		WORKERS COMPENSATION AND EMPLOYERS' LIABILITY ANY PROPRIETOR/PARTNER/EXECUTIVE OFFICER/MEMBER EXCLUDED? If yes, describe under SPECIAL PROVISIONS below		/ /	/ /	WC STATUTORY LIMITS OTH-ER E L EACH ACCIDENT \$ E L DISEASE - EA EMPLOYEE \$ E L DISEASE - POLICY LIMIT \$
A		OTHER PROF LIAB	4000004443-041	10/15/2004	10/15/2005	Occurrence 1,000,000 Aggregate 2,000,000

DESCRIPTION OF OPERATIONS/LOCATIONS/VEHICLES/EXCLUSIONS ADDED BY ENDORSEMENT/SPECIAL PROVISIONS
DEDUCTIBLES - CGL: \$2,500 per occurrence (applies to dmg only) CPL: \$2,500 per pollution condition (applies to defense cost and damages, Professional Liability: \$2,500 per incident (applies to defense cost and damages).

*Except 10 days for Non-payment of premium.

CERTIFICATE HOLDER

(712) 388-8833 PHN (402) 933-7092 FAX
ATTN: Darwin or Lawrence

ALLOY SPECIALTY
22050 185TH STREET

COUNCIL BLUFFS IA 51503-

CANCELLATION

SHOULD ANY OF THE ABOVE DESCRIBED POLICIES BE CANCELLED BEFORE THE EXPIRATION DATE THEREOF, THE ISSUING INSURER WILL ENDEAVOR TO MAIL 30* DAYS WRITTEN NOTICE TO THE CERTIFICATE HOLDER NAMED TO THE LEFT, BUT FAILURE TO DO SO SHALL IMPOSE NO OBLIGATION OR LIABILITY OF ANY KIND UPON THE INSURER, ITS AGENTS OR REPRESENTATIVES.

AUTHORIZED REPRESENTATIVE