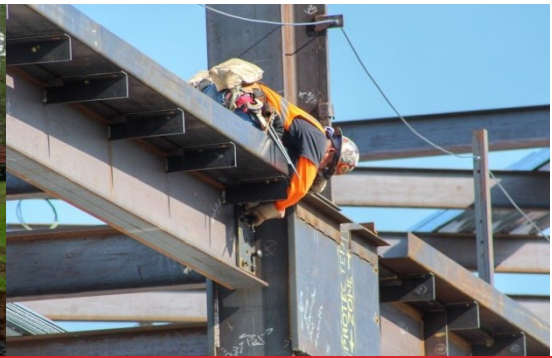




*Engineered Assurance Since 1981*

777 Chrysler Drive, Burlington, WA 98233 | (360)755-1990 | [www.mtc-inc.net](http://www.mtc-inc.net)

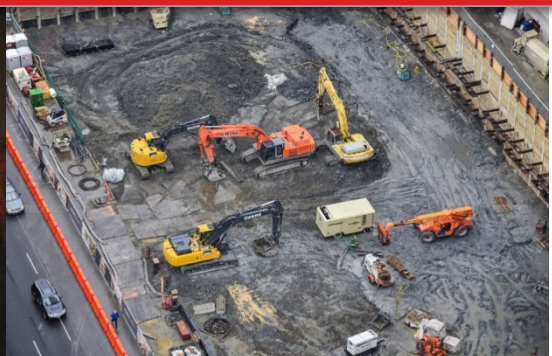
Geotechnical Engineering | Materials Testing | Special Inspection | Environmental Consulting



# STATEMENT OF QUALIFICATIONS

Special Inspection, Material Testing & Geotechnical Engineering

| Standard Statement of Qualifications



# TABLE OF CONTENTS

## **EXECUTIVE SUMMARY**

Firm Qualifications & Special Expertise .....	1
-----------------------------------------------	---

## **COMPANY PROFILE**

Firm Identification, Specialization & Expertise .....	2
Geotechnical Engineering & Consulting .....	3
Special Inspection & Material Testing .....	4
Laboratory Testing .....	5

## **PROJECT EXPERIENCE & PAST PERFORMANCE**

Featured Projects, Scope & Budget .....	6
-----------------------------------------	---

## **FIRM PERSONNEL**

Team Organization & Key Personnel .....	11
Engineering Personnel .....	12
Special Inspection Personnel .....	14
Laboratory Personnel .....	19

## **FIRM APPROACH**

Availability & Capacity .....	20
Project Approach .....	20

## **UNIQUE FIRM ADVANTAGE**

Digital Paper Route (DPR) .....	21
---------------------------------	----

## **REFERENCES**

Client Recommendations .....	22
Principal Contact Information .....	25

# Executive Summary

## ***“A qualified firm you can count on.”***

Materials Testing & Consulting, Inc. is a multi-faceted, local, certified small business providing accredited material testing, construction inspection, and laboratory testing services. Our field and laboratory services range from geotechnical site evaluation and construction observation, to inspecting and monitoring the quality of the construction materials delivered and installed at your project. Our laboratory capabilities include testing soils, rock, concrete, aggregates, hot-mix asphalt, stone, masonry, and grout. We think you will agree that MTC is a qualified firm you can count on.

As a Washington State registered Engineering Corporation and WABO approved agency, MTC provides its specialized services for numerous projects in Western Washington. We are continually working with school districts, municipalities, public and private entities to assure each and every project conforms to engineering specifications, local building codes and standards during all phases of construction. With an experienced inspection staff of over 60 employees, we think you'll agree that our abilities meet each and every need that may arise. MTC is approved, accredited, licensed, affiliated, registered with and/or certified by the following national, state and local organizations:

- **Washington State Licensed Engineering Corporation #2005**
  - Washington State Licensed Professional Engineers
  - Washington State Licensed Geologists
- **Washington Association of Building Officials (WABO)**
  - Burlington, Washington
  - Olympia, Washington
- **American Association for Laboratory Accreditation (A2LA)**
  - Burlington, Washington - Certificate #1366-01
  - Olympia, Washington - Certificate #1366-02
- **Washington State Department of Transportation (WSDOT)**
- **International Code Council (ICC)**
- **Northwest Council of Engineering Laboratories (NWCEL)**
- **National Institute for Certification in Engineering Technologies (NICET)**
- **American Association of State Highway and Transportation Officials (AASHTO)**
- **Western Alliance for Quality Transportation Construction (WAQTC)**
- **American Concrete Institute (ACI)**
- **American Welding Society (AWS)**
- **American Society for Testing and Materials (ASTM)**
- **American Society for Non Destructive Testing (ASNT)**
- **Army Corps of Engineers Validated (ACOE)**
- **Certified Small Business:**
  - NAICS Codes 541350, 541330, 541360, 541380, 541620, 541990



ENGINEERED ASSURANCE SINCE 1981

Geotechnical Engineering • Materials Testing • Special Inspection • Environmental Consulting

[www.mtc-inc.net](http://www.mtc-inc.net)

# Company Profile

***“We know that our success starts with you.”***

Established in 1981, in Burlington, Washington, Materials Testing & Consulting, Inc. maintains multiple fully certified and accredited locations throughout Western Washington. Our laboratories provide a full spectrum of professional services including geotechnical engineering and consulting, environmental engineering and consulting, special and construction inspection, materials testing and non-destructive testing. Here at MTC, we know that our success starts with you. We recognize that the framework of each project is dependent upon safety, reliability, professionalism, and trust within our client relationships. MTC maintains a highly qualified staff, allowing us the opportunity to cater to the needs of each project we are awarded.

MTC offers a complete range of services that ***no other firm in Western Washington can match.*** For our clients, this means retaining one company that can provide geotechnical engineering, geophysics, environmental consulting, special and construction inspection, materials testing and specialized geotechnical laboratory testing.



Materials Testing & Consulting, Inc. Service Area

## MTC Locations:

### Corporate Office & Laboratory

777 Chrysler Drive, Burlington, WA 98233  
Phone: (360) 755-1990 / Fax: (360) 755-1980

### NW Region

805 Dupont Street, Bellingham, WA 98225  
Phone: (360) 647-6061 / Fax: (360) 647-8111

### SW Region & Laboratory

2118 Black Lake Blvd. SW, Olympia, WA 98512  
Phone: (360) 534-9777 / Fax: (360) 534-9779

### Kitsap Region

5451 NW Newberry Hill Rd., Silverdale, WA 98383  
Phone: (360) 328-2500 / Fax: (360) 755-1980

### Tukwila Office

4611 South 134th Place, Tukwila, WA 98168  
Phone: (206) 241-1974 / Fax: (360) 755-1980

ENGINEERED ASSURANCE SINCE 1981

Geotechnical Engineering • Materials Testing • Special Inspection • Environmental Consulting

[www.mtc-inc.net](http://www.mtc-inc.net)

# Geotechnical Engineering & Consulting

MTC offers a full-spectrum of geotechnical engineering services ranging from field exploration and data collection to laboratory testing of soil properties, engineering analysis and design and construction monitoring services. Our full time professional staff includes Washington State registered professional engineers and geologists that are familiar with the region's subsurface conditions and apply this experience to develop prudent and practical recommendations.



## **MTC's Geotechnical Engineering Services include:**

- Geologic site reconnaissance and mapping
- Subsurface explorations: borings, hand-auger and cone penetration tests
- Shallow and deep foundation design
- Geopier and stone column "intermediate" foundation geotechnical design
- Slope stability and settlement analysis
- Retaining wall and shoring design
- Infiltration testing and design
- Seepage analysis and slurry wall design
- Seismically-induced settlement and liquefaction analysis
- Observation and documentation of auger-cast piles, drilled piers and piles
- Geologic hazard assessment, mitigation and Critical Areas Ordinance
- Geotechnical engineering forensic investigation
- Subgrade stabilization: geosynthetic reinforcement and soil amendment
- Design of rigid and flexible pavements including mix design
- Ground water monitoring and storm design recommendations
- Slope liner and earth embankment design

## **MTC's Environmental Consulting Services include:**

- Phase I Environmental Site Assessments (ESAs)
- Remedial Investigation / Feasibility Studies (RIFS)
- Cleanup Action Plans (CAPs)
- Certified Erosion and Sediment Control Lead (CESCL)

## **MTC's Geophysical Services include:**

- Ground Penetrating Radar (GPR) Surveys
- Utility Scanning
- Structural Scanning

## **MTC's Geotechnical Laboratory Services include:**

- Capillary and Aeration Porosity (ASTM F1815)
- Collapse Potential of Soil (ASTM D5333)
- Consolidation (ASTM D2435)
- Core Logging
- Effective Porosity, rigid and flex wall
- Laser Diffraction
- One Dimensional Swell (ASTM D4546)
- Permeability

ENGINEERED ASSURANCE SINCE 1981

Geotechnical Engineering • Materials Testing • Special Inspection • Environmental Consulting

[www.mtc-inc.net](http://www.mtc-inc.net)

# Special Inspection & Material Testing

Special and construction inspection help to reduce costly failures by verifying that specified construction materials are used, and that their applications and materials are constructed per the design's intent. MTC's inspection staff are skilled at providing efficient and timely solutions during the construction process. They have the experience, knowledge, capabilities and foresight to identify problems before they occur.



## MTC's Inspection & Testing Services include:

- Reinforced, pre-stressed / post-tensioned and architectural concrete inspection and testing
- Field inspection and plant testing of asphaltic concrete
- Concrete moisture emission testing
- Shotcrete placement monitoring and nozzle-man certification
- Structural masonry inspection and testing
- Brick veneer inspection and in-place brick shear testing
- Pre-cast plant inspection
- Batch plant inspection, certification and NRMCA verification
- Structural steel welding including cold-formed steel framing inspection and high strength bolting
- Non-destructive testing including dye-penetrant, magnetic-particle and ultrasonic testing
- Light gauge steel and lateral framing inspection
- Anchor bolt and reinforcement pull-testing
- Spray-applied fire resistive materials
- Firestopping
- Epoxy and proprietary anchoring systems
- Floor-flatness and floor levelness testing
- Ground Penetrating Radar (GPR), Pachometer (rebar location) and Schmidt Hammer (rebound) testing
- Nailing and fastener inspection for shear walls, diaphragms and seismic bracing
- Built-up and membrane roofing system inspection
- Seismic retrofit compliance
- Paint and industrial coatings thickness and application verification
- Waterproofing and wood moisture testing
- Compaction testing of soils and asphalt

ENGINEERED ASSURANCE SINCE 1981

Geotechnical Engineering • Materials Testing • Special Inspection • Environmental Consulting

[www.mtc-inc.net](http://www.mtc-inc.net)

# Laboratory Testing

Our materials testing capabilities include:

## Laboratory Testing for Earthwork & Asphalt

- % Passing # 200 Sieve (ASTM C117)
- # 200 Sieve (ASTM C117)
- Accelerated Weathering (CRD-C148)
- Asphalt Extraction with Gradation (ASTM D6307)
- Asphalt Thickness (ASTM D3549)
- Atterberg Limits - 1 and 3 points (ASTM D4318)
- Asphalt Core Density (ASTM D2726)
- California Bearing Ratio 3-point (ASTM D1883)
- Clay Lumps and Friable Particles (ASTM C142)
- Durability Index / Degradation Value (WSDOT 113)
- Flat / Elongated Particles (CRD C-119, ASTM D4791)
- Fracture Percentage (ASTM D5821)
- Hydrometer Analysis with Sieve Analysis (ASTM D422)
- In-Field Infiltration Rate
- Marshall Stability & Flow (ASTM D6927)
- Mix Design Marshall Method, 3 trials
- Moisture Density Relationship, Proctor with or without Sieve (ASTM D698, D1557)
- Natural Moisture Content (ASTM D2216)
- Organic Content, Loss by Ignition (ASTM D2974)
- Organic Impurities (ASTM C40)
- Rice Density (ASTM D2041)
- Sand Cone Density Test (ASTM D1556)
- Sand Equivalent (ASTM D2419)
- Sieve Analysis – Dry Only / Gradation (ASTM C136)
- Sieve Analysis with #200 Wash / Combined Gradation (ASTM C136, C117)
- Soils-Cement Mix Design
- Specific Gravity and Absorption of Coarse Aggregate (ASTM C127)
- Specific Gravity and Absorption of Fine Aggregate (ASTM C128)
- Specific Gravity of Soils (ASTM D854)
- Soundness of Aggregates by Magnesium or Sodium Sulfate (ASTM C88)
- Superpave Test Set

- Uncompacted Void Content (ASTM C1252)
- Unconfined Compression - Intact Rock Cores (ASTM D2166)
- Unit Weight & Voids in Aggregate (ASTM C29)
- Visual Classification

## Laboratory Testing for Special & Construction Inspection

- Air Dry Density of Concrete
- Cohesion / Adhesion Tests
- Concrete Compression Strength Test Sawed Section (ASTM C42)
- Concrete Compression Test Cylinders - 4" x 8" and 6" x 12" (ASTM C39)
- Concrete Compression Test Cylinders - not cast by MTC (ASTM C39)
- Concrete Core Thickness (ASTM C1542)
- Concrete Shrinkage (ASTM C596)
- Core Compression Test (ASTM C42)
- Fireproofing Density Test
- Flexural Beams
- Grout Compressive Strength Test (ASTM C1019)
- Masonry Prism Compression Test (ASTM C1314)
- Masonry Unit Compression Test (ASTM C140)
- Masonry Unit Absorption, Unit Weight & Moisture Content (ASTM C140)
- Moisture Emission Test Kit
- Mortar Compressive Strength
- Set Times, Initial and Final
- Shotcrete Compression Test (ASTM C1604)
- Trial Batch - 6 Cylinders (ASTM C192)
- Unit Weight and Yield
- Voids and Density of Hardened Concrete ASTM C642)



ENGINEERED ASSURANCE SINCE 1981

Geotechnical Engineering • Materials Testing • Special Inspection • Environmental Consulting

[www.mtc-inc.net](http://www.mtc-inc.net)

# Project Experience & Past Performance



## **Trailside Student Housing, Trailside SH Holding, LLC.**

**Project Name & Location:** Trailside Student Housing, Seattle, Washington

**Services Provided:** Geotechnical Investigation, Special Inspections and Materials Testing

**Date of Service:** August 2019 - August 2021

**Contract Value:** \$165,000,000 / MTC \$315,500

**Reference:** Scott Lee, Trailside LLC, (206) 948-3505

- This new, 268-unit student building will replace the 60-year-old, eight-building complex that is currently standing. The new building will be seven and six-story buildings that will be linked together, underground parking and a large bike room will also be included.
- Services include geotechnical investigation, reinforced concrete, auger cast piling, post-tensioned concrete, structural masonry, structural steel welding, structural steel bolting, lateral framing, proprietary anchors, floor flatness and levelness, earthwork testing, asphalt, and all associated laboratory testing.



## **Jackson St. Apartments, Vulcan**

**Project Name & Location:** Jackson St. Apartments, Seattle, Washington

**Services Provided:** Special Inspections and Materials Testing

**Date of Service:** March 2018 - August 2020

**Contract Value:** \$142,000,000 / MTC \$322,000

**Reference:** Kiki Gram, Vulcan, (206) 342-2361

- This project is a mixed-use development, offering 532 residential apartment homes plus nearly 44,000 square feet of retail space for a grocery store as well as micro, small and medium-sized units for local shops and services.
- Resident inspection services include post-tensioned and reinforced concrete, structural steel and steel decking, reinforced masonry, fireproofing, lateral wood and cold form framing, proprietary anchors, non-destructive testing, floor flatness and levelness, and all associated laboratory testing.



ENGINEERED ASSURANCE SINCE 1981

Geotechnical Engineering • Materials Testing • Special Inspection • Environmental Consulting

[www.mtc-inc.net](http://www.mtc-inc.net)



# Project Experience & Past Performance



## Bellevue South, KG Investment Properties

**Project Name & Location:** Bellevue South, Bellevue, Washington

**Services Provided:** Special Inspections and Materials Testing

**Date of Service:** March 2018 - September 2020

**Contract Value:** \$50,000,000+ / MTC \$250,000

**Reference:** Jeff Rockey, KG Investment, (206) 621-8884

- This project is a five-acre, 4-story, 427,000-square-foot mixed-use development which includes retail and medical office space. The retail space is expected to include a grocery store.
- Resident inspection services include post-tensioned and reinforced concrete, structural steel and steel decking, reinforced masonry, fireproofing, cold form framing, seismic bracing, proprietary anchors, non-destructive testing, floor flatness and levelness, and all associated laboratory testing.



## Avalon Belltown Towers, Avalon Bay Communities

**Project Name & Location:** Avalon Belltown Towers, Seattle, Washington

**Services Provided:** Special Inspections and Materials Testing

**Date of Service:** March 2018 - June 2019

**Contract Value:** \$147,000,000 / MTC \$275,000

**Reference:** Chris Swenson, Avalon Bay, (206) 604-5377

- This 24-story tower, containing 330 apartment units above 9,500 square feet of retail space and approximately 250 below-grade parking stalls, is located in the trendy Seattle Belltown neighborhood.
- Resident inspection services include post-tensioned and reinforced concrete, shotcrete, structural steel and steel decking, reinforced masonry, fireproofing, cold form framing, proprietary anchors, daily batch plant inspection, non-destructive testing and floor flatness and levelness, and all associated laboratory testing.



ENGINEERED ASSURANCE SINCE 1981

Geotechnical Engineering • Materials Testing • Special Inspection • Environmental Consulting

[www.mtc-inc.net](http://www.mtc-inc.net)

# Project Experience & Past Performance



## **Dr. Claudia Thomas Middle School, Clover Park School District**

**Project Name & Location:** Dr. Claudia Thomas Middle School, Lakewood, Washington

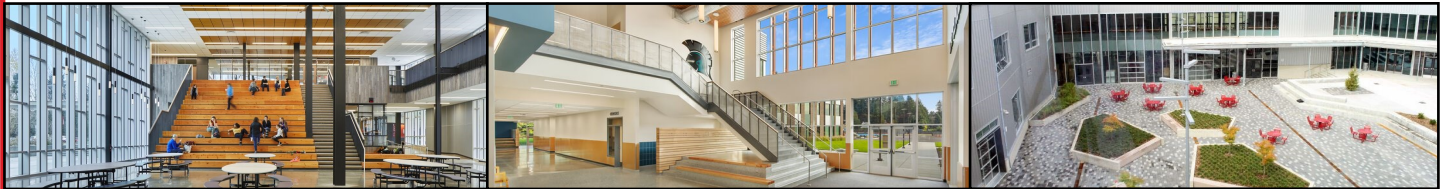
**Services Provided:** Special Inspections and Materials Testing

**Date of Service:** July 2018 - February 2021

**Contract Value:** \$50,000,000 / MTC \$90,837

**Reference:** Bill Coon, Clover Park School District, (253) 583-5302

- For this project, the District decided to consolidate two middle schools into one. The new campus will hold 1,000 students in grades 6 to 8 and will be approximately 134,000 square feet. The building will have 48 classrooms including three science rooms for each grade, a main gym, an auxiliary gym, commons area with raised stage, library/media center, full-prep kitchen and spaces for art, music and career and technical education.
- MTC scope of services include special inspections for reinforced concrete, structural steel welding, structural masonry, lateral framing, proprietary anchors, non-destructive testing, floor flatness, earthwork, asphalt, and all associated laboratory testing.



## **Juanita High School, Lake Washington School District**

**Project Name & Location:** Juanita High School Rebuild Expansion, Kirkland, Washington

**Services Provided:** Special Inspections and Materials Testing

**Date of Service:** July 2017 - March 2021

**Contract Value:** \$96,448,915 / MTC \$288,400

**Reference:** Tansy Hansen, Lake Washington School District, (206) 883-4608

- This project scope includes the three-phase rebuild and expansion of the existing Juanita High School, including demolition of an existing academic building on an occupied, operating campus. With 219,000 square feet of rebuilt space and 33,000 square feet of new space being added, the high school will accommodate 1,800 students once complete.
- Services included special inspections for reinforced concrete, structural steel welding, structural steel bolting, structural masonry, fireproofing, firestopping lateral framing, proprietary anchors, non-destructive testing, floor flatness, earthwork, and all associated laboratory testing.

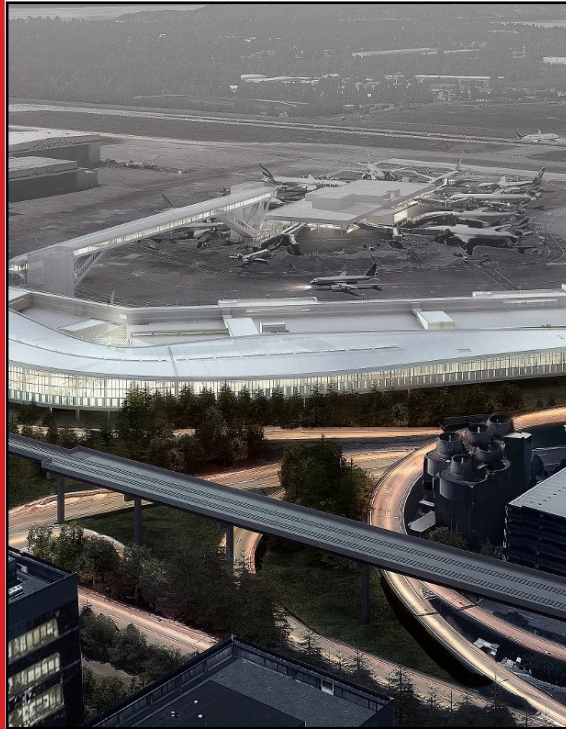


ENGINEERED ASSURANCE SINCE 1981

Geotechnical Engineering • Materials Testing • Special Inspection • Environmental Consulting

[www.mtc-inc.net](http://www.mtc-inc.net)

# Project Experience & Past Performance



## International Arrivals Facility, Clark Construction

**Project Name & Location:** International Arrivals Facility, SeaTac, Washington

**Services Provided:** Special Inspections and Materials Testing

**Date of Service:** July 2017 - March 2022

**Contract Value:** \$830,000,000 / MTC \$979,000

**Reference:** Andrew Klobucnik, Clark Construction, (206) 348-6970

- This project is a new multi-level 450,000-square-foot facility add-on to the current Concourse A, as well as a 900-foot-long aerial walkway.
- Services include reinforced concrete, CDF, structural masonry, structural steel welding, structural steel bolting, pre-stressed concrete, proprietary anchors, non-destructive testing, earthwork and asphalt testing. Inspections for the IAF require considerable coordination with onsite Clark representatives to ensure quick turn-around while ensuring compliance and quality standards are met daily.



## Port of Seattle IDIQ Contract, Port of Seattle

**Project Name & Location:** Port of Seattle, SeaTac, Washington

**Services Provided:** Special Inspections and Materials Testing

**Date of Service:** December 2016 - Current

**Contract Value:** MTC \$250,000

**Reference:** Ann Davidson, Port of Seattle, (206) 787-4070

- MTC was awarded the IDIQ contract with the Port of Seattle for special testing, inspections, and material testing services in 2015. MTC was one of only a select few firms picked to provide these services for all of the Port of Seattle ports, buildings, and airport facilities. As a result of MTC's success with the Port of Seattle we were recently awarded the new IDIQ contract through 2022.
- Inspection services include reinforced concrete, structural steel and steel decking, reinforced masonry, fireproofing, proprietary anchors, non-destructive testing, floor flatness, earthwork, asphalt paving, and all associated laboratory testing.



ENGINEERED ASSURANCE SINCE 1981

Geotechnical Engineering • Materials Testing • Special Inspection • Environmental Consulting

[www.mtc-inc.net](http://www.mtc-inc.net)

# Project Experience & Past Performance



## Harrison Hospital, CHI Franciscan Health

**Project Name & Location:** Harrison Hospital, Silverdale, Washington

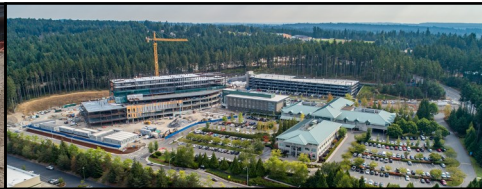
**Services Provided:** Special Inspections and Materials Testing

**Date of Service:** June 2016 - February 2022

**Contract Value:** \$344,000,000 / MTC \$807,000

**Reference:** Chris Kirk, CHI Franciscan, (206) 380-0099

- This project includes the construction of a 9-story, 500,000-square-foot acute care expansion; a 4-story, 57,000-square-foot specialty center; and a 5-story, 238,000-square-foot parking garage. This facility will be one of the most energy efficient hospitals in the country and the most energy efficient in the state of Washington.
- Services include reinforced concrete, structural masonry, column base grouting, cold form framing, welding, steel bolting, pre-stressed concrete, lateral wood, shotcrete, proprietary anchors, non-destructive testing, earthwork / asphalt testing, and all associated laboratory testing.



## VA Hospital, ARGO Systems, LLC

**Project Name & Location:** VA Hospital, Seattle, Washington

**Services Provided:** Special Inspections and Materials Testing

**Date of Service:** June 2015 - November 2021

**Contract Value:** \$182,000,000 / MTC \$435,000

**Reference:** Rick Cook, ARGO Systems, (410) 768-2444

- This project included the construction of a new mental-health and research facility and new parking garage. The construction encompassed 8 stories and over 219,000 square feet while remaining fully operational.
- Comprehensive special inspection and materials testing in QA capacity for owner. Inspection services included earthwork, asphaltic concrete, post-tensioned and reinforced concrete, shotcrete, structural steel and steel decking, reinforced masonry, fireproofing / firestopping, proprietary anchors, non-destructive testing and floor flatness and levelness.

ENGINEERED ASSURANCE SINCE 1981

Geotechnical Engineering • Materials Testing • Special Inspection • Environmental Consulting

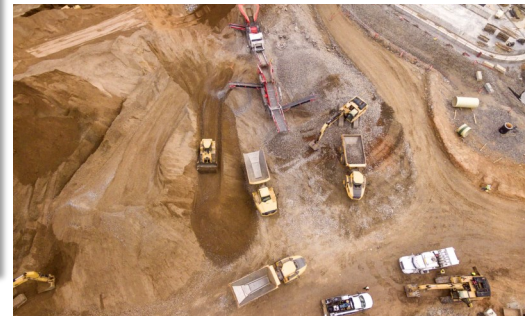
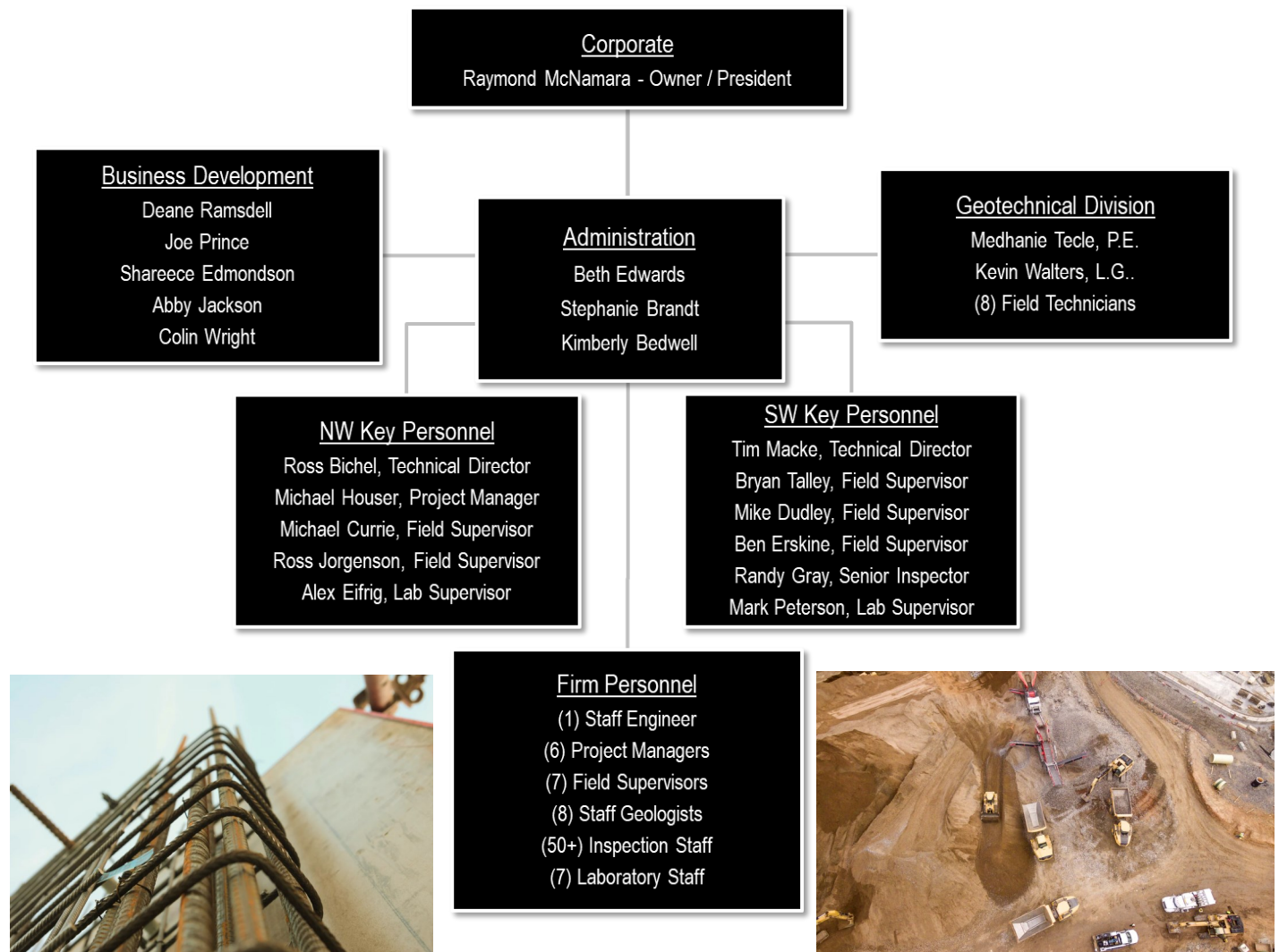
[www.mtc-inc.net](http://www.mtc-inc.net)

# Firm Personnel

***“We recognize that serving our clients is a privilege.”***

MTC’s corporate officers have remained the same since the company was purchased in 1995. Our professional engineering staff consists of Washington State licensed engineers and geologists; Laboratory and inspection managers who are certified by the Washington Association of Building Officials (WABO) as Laboratory Managers, Technical Directors and Field Supervisors. The experience and knowledge level of our highly qualified technicians remains one of our most attractive features. Without doubt, MTC will bring a wealth of experience to each project. From proposal to final letter, we recognize that serving our clients is a privilege.

As detailed in the chart below, a fundamental component of MTC’s successful structure is a clearly defined chain of command, allowing for easy access to Project Managers, Technical Directors and Field Supervisors. We value each member of our team, knowing that we all play a vital role throughout each phase of the project.



ENGINEERED ASSURANCE SINCE 1981

Geotechnical Engineering • Materials Testing • Special Inspection • Environmental Consulting

[www.mtc-inc.net](http://www.mtc-inc.net)

# Key Personnel - Engineering

## Medhanie Teclé, P.E.

Materials Testing & Consulting, Inc.

Principal Engineer, Technical Director, Senior Project Manager

Mr. Teclé has 30 years of experience as a Professional Engineer with a strong ability to perform cost-effective engineering analysis and quality management on small scale to multi-million projects, while training staff engineers and technicians for better project products. He has an exceptional ability to fulfill complex project tasks and challenging engineering assignments within allowed budget and time by implementing most updated design methods and practicing a best-available analysis technique. Mr. Teclé has performed engineering on various sites from freeway ramps, slope embankments and slope analysis to subsurface investigations for detention ponds.

Materials Testing & Consulting, Inc.: 1/2017 - Present

Principal Engineer, Technical Director, Senior Project Manager

Terracon Consultants, Inc.: 9/2006 - 10/2010 & 4/2015 - 8/2016

Materials Department Manager, Senior Geotechnical Engineer, Materials Engineer, Project Manager, Lab Supervisor

### Bellevue Hilton Garden Inn, Bellevue, WA

Project Manager for construction of six-story hotel building with a two-level, below-ground parking garage. Responsible for special inspections and materials testing, scheduling, project budgeting, review of daily inspection reports, field & laboratory test reports and timely distribution of reports to client. Special inspections included temporary soil-nail shoring, structural concrete, shotcrete, soils, proprietary anchors, masonry and structural steel.

### The Cosmopolitan Resort and Casino, Las Vegas, NV

Project Engineer for construction of 2,200 condominium-hotel units; 800 hotel rooms; a 75,000-SF casino; 300,000 SF of retail and restaurant space; a 40,000-SF spa and fitness facility; an 1,800-seat theater; and 150,000 SF of meeting/convention space.

Responsible for special inspection in grading activities such as inspection of subgrades for pad certificates and taking density tests on compacted backfill soils; inspection on installation of micropiles for ground improvement; tiebacks to support retaining walls and secant piles for temporary shoring; review of inspection reports and compilation of final report to Clark County, Nevada.



### **Education:**

M.S., Civil Engineering, University of Nevada, Las Vegas

### **Professional Registrations:**

- Professional Engineer, Washington (#50966)
- Professional Engineer, Oregon (#88471)
- Professional Engineer, Nevada (#018105)
- Professional Engineer, Utah (#8081775-2202)
- Professional Engineer, Arizona (#53216)

### **Qualifications / Certifications / Affiliations:**

- Civil/Geotechnical Engineering
- Project Management
- Environmental Engineering
- WABO Technical Director
- Nuclear Densometer Certification
- American Society of Civil Engineers
- Construction Management Association of America

ENGINEERED ASSURANCE SINCE 1981

Geotechnical Engineering • Materials Testing • Special Inspection • Environmental Consulting

[www.mtc-inc.net](http://www.mtc-inc.net)

# Key Personnel - Engineering

## Kevin Walters

Materials Testing & Consulting, Inc.  
Geotechnical Division Manager, Field Supervisor, Senior Special Inspector

Mr. Walters has more than 14 years of experience performing special inspection, material testing and geotechnical engineering, as well as current project management experience with the Port of Seattle. A 2005 graduate of Western Washington University, Mr. Walters is a Washington State Licensed Geologist and WABO / ICC Certified Special Inspector. Mr. Walters offers a vast array of technical knowledge and diverse on-call contract experience working with the Port of Seattle, City of Everett, Island County, Skagit County, City of Bellingham, and North Shore School District. Aside from his vast on-call experience, Mr. Walters has assisted with a wide variety of projects including airports, commercial buildings, school modernizations, roadway improvements, hospitals and bridges. His skillset ranges from quality control assurance to geotechnical investigation; Mr. Walters is also a Certified Erosion & Sediment Control Lead (CESCL) and has executed Temporary Erosion and Sediment Control (TESC) plans for both residential and high-profile commercial projects throughout Western Washington.

Materials Testing & Consulting, Inc.: 10/2007 - Present  
Geologist, WABO Special Inspector, Project Manager

### Grand Avenue Park Bridge, Everett, WA

The Grand Avenue Park Bridge began as an infrastructure project but evolved to become a way for the city to provide pedestrian access from Grand Avenue Park to the waterfront. The bridge carries storm drainage and sewer pipelines across a steep slope, BNSF railroad tracks and West Marine View Drive. The bridge also provides pedestrian access from Grand Avenue Park to the waterfront. The project included replacements of outfalls and a lift station force main along the waterfront. As Senior Special Inspector, Mr. Walters oversaw the quality control special inspections for reinforced concrete, non-destructive testing, structural steel welding, earthwork and asphalt testing, and all associated laboratory testing.

### Clyde Hill Elementary, Bellevue, WA

This project scope included the construction of the new, 90,000-SF school to replace the existing elementary school on its 7.29 acre site. The new building serves approximately 650 students in grades K - 5 as well as early childhood. The existing play field was replaced with synthetic turf along with other improvements including new parking areas, pedestrian walkways, and improved vehicular circulation for buses and parent drop-off areas. As Senior Special Inspector, Mr. Walters was responsible for the onsite quality control and special inspections for reinforced concrete, structural masonry, non-destructive testing, structural steel welding, non-destructive testing, cold formed steel, lateral framing, proprietary anchors, floor flatness, fireproofing, and all associated laboratory testing.



### **Education:**

Bachelor of Science in Geology,  
Concentration of Environmental  
Geology, Western Washington  
University, 2005

### **Qualifications / Certifications:**

- Washington State Licensed Geologist #3043
- WABO Field Supervisor
- WABO / ICC Special Inspector Reinforced Concrete (RC)
- WABO / ICC Special Inspector Pre-Stressed Concrete (PC)
- WABO Special Inspector Shotcrete (SC)
- WABO / ICC Special Inspector Structural Masonry (SM)
- WABO Proprietary Anchors (PA)
- WABO Fire-Resistant Penetrations and Joints (FS)
- Certified CESCL
- ACI field Technician Grade 1
- Nuclear Densometer
- TWIC
- OSHA-10
- Port of Seattle Badging

ENGINEERED ASSURANCE SINCE 1981

Geotechnical Engineering • Materials Testing • Special Inspection • Environmental Consulting

[www.mtc-inc.net](http://www.mtc-inc.net)

# Key Personnel - Inspection

## Raymond McNamara

Materials Testing & Consulting, Inc.  
President, Director of Operations, Senior Project Manager

Mr. McNamara has over 28 years construction inspection industry experience. His long history includes managing a \$30M company with crews of up to 75 field staff. He is backed by strong credentials and a proven history of on-time, on-budget and high-quality project completions. While employed with ICC, he developed course training for ICC certification exams, provided guidance and developed procedures for the implementation of the new building code. His project experience includes project management and inspection on high-rise and casino projects as well as public works, roads and military projects including; I15 North widening and IDIQ at Creech Air Force Base in Nevada with up to \$3.1 billion in construction costs on a single project.

Materials Testing & Consulting, Inc.: 3/2012 - Present  
Director of Operations, Project Manager and Special Inspector

Aztech Inspections & Testing: 1/2002 - 4/2010  
General Manager, Quality Manager, Staff Supervisor, Union Liaison

### WWU Multicultural Center Expansion, Bellingham, WA

The MCC is an addition and renovation to the WWU Bookstore and Viking Union facility to develop a new location for multicultural services programs. The project includes removing the existing bookstore's concrete roof and mezzanine structure to construct a new second-story structure to house programs and a bridge connecting to another structure. Mr. McNamara acts as the Project Manager responsible for quality control of the following disciplines: reinforced concrete, structural masonry, cold form framing, structural steel welding, structural steel bolting, proprietary anchors, non-destructive testing, earthwork, and asphalt testing.

### Skaqit Valley YMCA, Mount Vernon, WA

This project is an all-new, approximately 60,000-square-foot facility. Elements of the new building include a new aquatics center, large gym area with full NCAA sized court, overhead track, wellness center, community rooms, kitchen, and a fully functioning early learning center. Mr. McNamara acts as the Project Manager responsible for quality control of the following disciplines: reinforced concrete, structural masonry, column base grouting, cold form framing, structural steel welding, structural steel bolting, lateral wood, shotcrete, proprietary anchors, non-destructive testing, earthwork, and asphalt testing.



### **Qualifications / Certifications:**

- U.S. Army Corp of Engineers: Certified Quality Manager (CQM)
- International Code Council (ICC) 11/2010 - 6/2011
- International code trainer the Department of Municipal Affairs, United Arab Emirates
- WABO / ICC Special Inspector Reinforced Concrete (RC)
- WABO / ICC Special Inspector Pre-Stressed Concrete (PC)
- WABO Special Inspector Shotcrete (SC)
- WABO / ICC Special Inspector Structural Masonry (SM)
- WABO / ICC Special Inspector Structural Steel & Bolting (SSB)
- WABO / ICC Special Inspector Structural Welding (SW)
- WABO / ICC Special Inspector Spray-Applied Fire Resistive Materials (FP)
- WABO Special Inspector Proprietary Anchors (PA)
- Nuclear Densometer Certification
- ACI Field Technician Grade I

ENGINEERED ASSURANCE SINCE 1981

Geotechnical Engineering • Materials Testing • Special Inspection • Environmental Consulting

[www.mtc-inc.net](http://www.mtc-inc.net)



# Key Personnel - Inspection

## Ross Bichel, WABO Technical Director

Materials Testing & Consulting, Inc.  
WABO Technical Director, QC Manager

Mr. Bichel has 21 years of experience as a Special Inspector in Western Washington and is, without doubt, an invaluable asset to our team. An integral part of the MTC team since 2000, Mr. Bichel has performed the roles of Special Inspector, Field Supervisor, Project Manager, Construction Manager, WABO Technical Director and Quality Control Manager. His experience includes providing technical assistance to field inspectors, ensuring inspections comply with applicable building codes and review / tracking of daily field reports. His most recent project experience was serving as the Construction Manager and Senior Resident Inspector for the Tulalip Tribes; with the responsibilities of document control, code compliance, construction and inspection oversight, the coordination and communication between all project representatives as well as providing quality field audits. His project experience includes inspection on mid-rise, mixed-use buildings, commercial public works projects and airfield projects; with up to \$140 Million construction costs on a single project.

Materials Testing & Consulting, Inc.: 7/2000 - Present  
Technical Director, QC Manager

### I-5 & 116th Street NE Interchange Improvements, Tulalip, WA

Mr. Bichel was the Senior Resident Inspector responsible for construction management and document control of the following disciplines: soils, reinforced concrete, pipeline welding, asphalt, mechanical and electrical reports. His role included construction management and oversight on behalf of the Tulalip Tribes for Sections 1-8 and involved coordination and communication between The Tribe, contractors, subcontractors, City of Everett, City of Marysville, WSDOT and utilities.

### Q Roadway Interchange, Tulalip, WA

This project included the construction of intersection and roadway improvements as well as the fuel station improvements and utility upgrades. Mr. Bichel was the Senior Resident Inspector responsible for construction management and document control of the following disciplines: soils, reinforced concrete, pipeline welding, asphalt, mechanical and electrical reports. His role also included construction management and oversight on behalf of the Tulalip Tribes for Sections 1-8 and involved coordination and communication between The Tribe, contractors, subcontractors, City of Everett, City of Marysville, WSDOT and utilities.



### **Qualifications / Certifications:**

- WSDOT Certified Inspector
- AWS CWI
- American Society for Non-Destructive Testing (ASNT) Level II NDT Technician
- WABO Technical Director (TD) and Field Supervisor
- WABO / ICC Special Inspector Reinforced Concrete (RC)
- WABO / ICC Special Inspector Pre-Stressed Concrete (PC)
- WABO Special Inspector Shotcrete (SC)
- WABO / ICC Special Inspector Structural Masonry (SM)
- WABO / ICC Special Inspector Structural Steel and Bolting (SSB)
- WABO / ICC Special Inspector Structural Welding (SW)
- WABO / ICC Special Inspector Spray-Applied Fire Resistive Materials (FP)
- WABO / ICC Special Inspector Lateral Wood (LW)
- WABO Special Inspector Cold-Formed Steel Framing (CF)
- WABO Proprietary Anchors (PA)
- ACI Field Technician Grade I

ENGINEERED ASSURANCE SINCE 1981

Geotechnical Engineering • Materials Testing • Special Inspection • Environmental Consulting

[www.mtc-inc.net](http://www.mtc-inc.net)

# Key Personnel - Inspection

## Tim Macke, WABO Technical Director

Materials Testing & Consulting, Inc.

WABO Technical Director, Field Supervisor, Special Inspector

Mr. Macke has over 22 years experience as a special inspector of all construction related materials from soils testing to structural steel. Mr. Macke, a WABO certified Technical Director, Field Supervisor and Special Inspector, is NICET Level I Certified and is certified by the US Army Corp of Engineers as a Quality Manager (CQM). In addition to his inspection background, Mr. Macke's experience includes extensive project management and field supervision of projects. Mr. Macke's history also includes work in Abu Dhabi, UAE, wherein he served as an expert trainer for the ICC (International Code Council) for the Abu Dhabi Municipality. He developed training materials and provided in-field training to the resident engineers and assisted in implementing a model special inspection and building department management program.

Materials Testing & Consulting, Inc.: 3/2013 - Present

Technical Director, Project Manager

### New Middle School #5 (Salish Middle School), Lacey, WA

This new school is 109,000 square feet on 19 acres of land, providing additional space for the overcrowding in the district. Mr. Macke acted as the Project Manager responsible for quality control of the following disciplines: reinforced concrete, structural masonry, structural steel welding, lateral wood, cold form steel, non-destructive testing, moisture emissions, proprietary anchors, earthwork, and all associated laboratory testing.

### Pierce County Readiness Center, Camp Murray, WA

Mr. Macke was the Project Manager of this new 81,000-square-foot, design-build regional training center, located on Camp Murray; used for special purpose and administration areas, arms vaults, an assembly hall, locker rooms, and support space in the event of a natural or man-made emergency. Mr. Macke was responsible for quality control of the following disciplines: reinforced concrete, structural masonry, proprietary anchors, structural steel welding, structural steel and bolting, ground penetrating rebar, earthwork, and all associated laboratory testing.

### Lucky Eagle Casino, Rochester, WA

The 41,000-square-foot expansion project added more space for gaming, food service, administration space, new sports bar and grill, meeting and entertainment space, and new Player's club and lounge. Along with the expansion, the casino added a 120,000-square-foot parking garage. Mr. Macke acted as the Field Supervisor responsible for the oversight of the inspections performed onsite as well as document control.



### Qualifications / Certifications:

- AWS CWI
- U.S. Army Corp of Engineers: Certified Quality Manager (CQM)
- WABO Technical Director (TD) and Field Supervisor
- WABO / ICC Special Inspector Reinforced Concrete (RC)
- WABO / ICC Special Inspector Pre-Stressed Concrete (PC)
- WABO Special Inspector Shotcrete (SC)
- WABO / ICC Special Inspector Structural Masonry (SM)
- WABO / ICC Special Inspector Structural Steel and Bolting (SSB)
- WABO / ICC Special Inspector Structural Welding (SW)
- WABO / ICC Special Inspector Spray-Applied Fire Resistant Materials (FP)
- WABO / ICC Special Inspector Lateral Wood (LW)
- WABO Special Inspector Cold-Formed Steel Framing (CF)
- WABO Proprietary Anchors (PA)
- WABO Fire-Resistant Penetrations and Joints (FS)
- Nuclear Densometer Certification

ENGINEERED ASSURANCE SINCE 1981

Geotechnical Engineering • Materials Testing • Special Inspection • Environmental Consulting

[www.mtc-inc.net](http://www.mtc-inc.net)

# Key Personnel - Inspection

## Ross Jorgensen

Materials Testing & Consulting, Inc.  
Field Supervisor, Senior Special Inspector

Mr. Jorgensen is a Special Inspector with 19 years experience in inspection and construction materials testing; certified by both the International Code Council (ICC) and Washington Association of Building Officials (WABO). He has worked on a variety of both civil and building construction projects and provided services as Resident Inspector on multi-disciplinary inspection projects with up to \$160 million total construction costs; most recently as the Resident Inspector for Stevenson Elementary in Bellevue, Washington. Mr. Jorgensen has been a valuable team member for Quality Assurance programs ranging from small concrete and steel structures to large-scale, mid-rise commercial buildings and wastewater treatment plants. His areas of expertise are reinforced and post-tensioned concrete and structural steel welding.

Materials Testing & Consulting, Inc.: 8/2002 - Present  
Field Supervisor, Senior Special Inspector

### Harrison Hospital Acute Care, Silverdale, WA

This project includes the construction of a 9-story, 500,000-square-foot acute care expansion; a 4-story, 57,000-square-foot specialty center; and a 5-story, 238,000-square-foot parking garage. Mr. Jorgensen has assisted with quality control of the following disciplines: reinforced concrete, structural masonry, column base grouting, cold form framing, structural steel welding, structural steel bolting, pre-stressed concrete, lateral wood, shotcrete, proprietary anchors, non-destructive testing, earthwork and asphalt testing, and all associated laboratory testing.

### Stevenson Elementary, Bellevue, WA

This project included construction of a new 106,000-square-foot elementary school and the demolition of the existing 50,000-square-foot school building. As Resident Inspector, Mr. Jorgensen assisted in the quality control special inspections for reinforced concrete, structural masonry, non-destructive testing, structural steel welding, cold formed steel, lateral framing, proprietary anchors, floor flatness, and all associated laboratory testing.



### **Education:**

B.S., Environmental Geology,  
Western Washington University, 2002

### **Qualifications / Certifications:**

- WABO / ICC Special Inspector Reinforced Concrete (RC)
- WABO / ICC Special Inspector Pre-Stressed Concrete (PC)
- WABO Special Inspector Shotcrete (SC)
- WABO / ICC Special Inspector Structural Masonry (SM)
- WABO / ICC Special Inspector Structural Steel and Bolting (SSB)
- WABO / ICC Special Inspector Structural Welding (SW)
- WABO / ICC Special Inspector Spray-Applied Fire Resistive Materials (FP)
- WABO / ICC Special Inspector Lateral Wood (LW)
- WABO Special Inspector Cold-Formed Steel Framing (CF)
- WABO Proprietary Anchors (PA)
- WABO Fire-Resistant Penetrations and Joints (FS)
- ACI Field Technician Grade I
- TWIC

ENGINEERED ASSURANCE SINCE 1981

Geotechnical Engineering • Materials Testing • Special Inspection • Environmental Consulting

[www.mtc-inc.net](http://www.mtc-inc.net)

# Key Personnel - Inspection

## Bryan Talley

Materials Testing & Consulting, Inc.  
WABO Special Inspector, Field Supervisor

Mr. Talley has over 25 years of experience throughout the United States. He has worked on a variety of projects and performed inspections on nuclear projects, high-rise buildings, commercial and industrial developments, schools and bridges. He is very efficient and confident when performing in the capacity of QC Manager and/or Managing Inspector which has been his responsibility on most of the projects listed. Mr. Talley is proficient in plan reading, reporting, construction management and supervision; an excellent communicator when acting as the liaison between engineer, sub-contractors, general contractors, owners and jurisdictional officials. He has an additional 16 years of experience in all facets of welding fabrication and erection, for a total of 41 years in the construction field

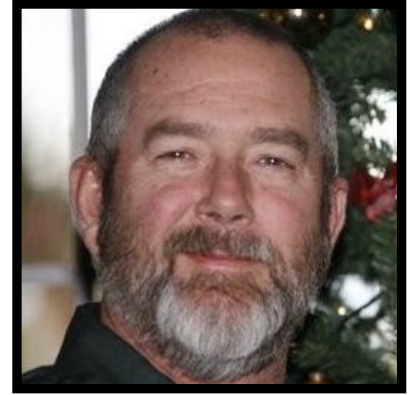
Materials Testing & Consulting, Inc.: 8/2017 to Present  
WABO Special Inspector, Field Supervisor

### Harrison Hospital Acute Care, Silverdale, WA

This project includes the construction of a 9-story, 500,000-square-foot acute care expansion; a 4-story, 57,000-square-foot specialty center; and a 5-story, 238,000-square-foot parking garage. This facility will be one of the most energy efficient hospitals in the country and the most energy efficient in the state of Washington. Mr. Talley was the Lead Resident Inspector onsite overseeing all inspections. Services include reinforced concrete, structural masonry, column base grouting, cold form framing, welding, steel bolting, pre-stressed concrete, lateral wood, shotcrete, proprietary anchors, non-destructive testing, earthwork / asphalt testing, and all associated laboratory testing.

### Harrison Specialty Care Center, Silverdale, WA

This project includes the construction of a 9-story, 500,000-square-foot acute care expansion; a 4-story, 57,000-square-foot specialty center; and a 5-story, 238,000-square-foot parking garage. This facility will be one of the most energy efficient hospitals in the country and the most energy efficient in the state of Washington. Mr. Talley was the Lead Resident Inspector onsite overseeing all inspections. Services include reinforced concrete, structural masonry, column base grouting, cold form framing, welding, steel bolting, pre-stressed concrete, lateral wood, shotcrete, proprietary anchors, non-destructive testing, earthwork / asphalt testing, and all associated laboratory testing.



### **Qualifications / Certifications:**

- AWS Certified Welding Inspector (CWI)
- NDT Level II (MT, PT, UT)
- WABO / ICC Special Inspector Reinforced Concrete (RC)
- WABO / ICC Special Inspector Pre-Stressed Concrete (PC)
- WABO / ICC Special Inspector Structural Masonry (SM)
- WABO / ICC Special Inspector Structural Steel and Bolting (SSB)
- WABO / ICC Special Inspector Structural Welding (SW)
- WABO / ICC Special Inspector Spray-Applied Fire Resistive Materials (FP)

ENGINEERED ASSURANCE SINCE 1981

Geotechnical Engineering • Materials Testing • Special Inspection • Environmental Consulting

[www.mtc-inc.net](http://www.mtc-inc.net)

## Key Personnel - Laboratory

### Alex Eifrig

Materials Testing & Consulting, Inc.  
Laboratory Supervisor

Mr. Eifrig has more than five years of experience in the field of construction materials testing. His current responsibilities include supervising and training laboratory personnel in MTC's Corporate branch and mobile labs. Mr. Eifrig performs all lab testing of concrete, including capping and testing of concrete cylinders and beams, grout samples and cubes; testing of soils and asphalt, including sieve analysis of concrete aggregates and soil samples, specific gravity of fine and coarse aggregates, standard and modified proctors of soils, sand equivalent of fine aggregate and unit weight of concrete. He performs extraction and gradations on hot-mixed asphalt, rice densities, specific gravity of compacted bituminous mixtures and Marshall mix designs. Administratively, he is responsible for answering technical questions from clients, contractors, building departments and engineers. He is responsible for ensuring lab compliance with applicable standards and maintains lab operations within guidelines required by accreditation agencies and ISO guide 17025.

Materials Testing & Consulting, Inc.: 4/2017 - Present  
Laboratory Supervisor



#### Education:

B.S., Soil Science,  
Oregon State University, 2016

#### Qualifications / Certifications:

- WABO Supervising Laboratory Technician
- WAQTC (Density, Aggregate, Asphalt)
- ACI Concrete Field, Laboratory & Strength Testing Technician
- ACI Masonry Laboratory Testing Technician
- ACI Aggregates Testing Technician

ENGINEERED ASSURANCE SINCE 1981

Geotechnical Engineering • Materials Testing • Special Inspection • Environmental Consulting

[www.mtc-inc.net](http://www.mtc-inc.net)

# Methodology: The MTC Project Approach

## ***“MTC immediately goes to work on your behalf.”***

### **Project Team Selection:**

- MTC's primary goal is to provide our clients with a transparent and trustworthy set of “eyes and ears” on their construction projects, giving them piece of mind that their projects are being constructed to the highest level of quality. Your skilled MTC project team will be hand selected based on their years of specialized experience when it comes to your specific construction project. This experience means keeping one company throughout the course of your project. We think you will agree, our team will meet and exceed your expectations!

### **Communication:**

- It is MTC's responsibility to provide independent inspection and testing while closely communicating with the entire project team, not only to identify issues but to be an active part of the resolution process. We will work very closely with the entire project team to ensure quality and integrity every step of the way. Between phone calls, email, same day digitized reporting and scheduled site visits, we understand the importance of being an active project member to ensure the work is accomplished on time, as requested and under budget.

### **Cost Management:**

- In our industry, it can be difficult to provide substantial savings across the board because inspection costs are a direct result of the contractor's efficiency and performance. ***It is in these critical situations where MTC's team excels.*** Real cost effectiveness occurs by identifying problems before they arise and being solution oriented when they do. Results must be reliable and not subject to speculation.



***Our team is prepared to go to work on your behalf as soon as a contract is awarded.*** MTC staff will be available to start early, work late or be available on weekends whenever necessary to meet the project schedules and requirements.

- With multiple MTC offices conveniently located throughout Western Washington, we can quickly mobilize staff and equipment to meet any sudden unexpected need onsite. We have a responsive reputation in this fast-moving industry and the number of repeat assignments we have received from our clients demonstrates our success in meeting their needs. MTC is available 24 hours a day, 7 days a week and on short notice.
- Our dispatch staff is in constant mobile communication with field supervisors and technical staff to ensure fast response times and to coordinate efficiently with all other project team members. MTC's inspection staff will coordinate with the Project Manager and the client's designees on a daily basis to perform the required inspections. The supervisory and field staff will be supported by an administrative team with over 62 years cumulative experience at MTC. We make it a priority to be solution oriented: be it a last-minute need onsite, or an inquiry about compliance.

ENGINEERED ASSURANCE SINCE 1981

Geotechnical Engineering • Materials Testing • Special Inspection • Environmental Consulting

[www.mtc-inc.net](http://www.mtc-inc.net)

# Digital Paper Route (DPR)

*“A unique firm advantage.”*

Materials Testing & Consulting provides a powerful web-based communication tool for your project called the Digital Paper Route (DPR). The DPR is the most effective report distribution system of any Puget Sound testing agency in terms of efficiency and access to important testing reports and documentation. No other Puget Sound firm has this capability. The DPR simultaneously sends electronic copies of MTC reports to all designated members of the project team (e.g., owners, construction managers, architect, building department, engineer, contractors, sub-contractors, etc.). As you can see in the screenshot below, you can track deficiencies, retests, RFI's and other critical aspects of a project. The system is secure and offers unmatched organization of important project documents. Additionally, this information assists in tracking the efficiency by which your contractor utilizes our services by providing a detailed list of non-conforming and re-inspection items along with late cancellations, same day requests for inspection and stand-by time.

One convenient place to manage reports, deficiencies and RFI's.

Report Date	Report #	Report Type	Deficiency	Retest / Reinspection	Needs Engineer Approval	Engineer Approved	RFI	Show Up	Standby	Same Day Call In
04/26/2018	F184668	Field Report: Masonry								
04/23/2018	F184424	Field Report: Masonry								
04/23/2018	F184430	Field Report: Structural Steel, Job site								
04/23/2018	UT-797	Field Report: Nondestructive Testing		✓						
04/20/2018	F184313	Field Report: Concrete								
04/20/2018	C184323	Compression Test: Concrete								
04/19/2018	F184308	Field Report: Concrete								
04/19/2018	C184311	Compression Test: Concrete								
04/19/2018	F184325	Field Report: Masonry								
04/19/2018	MP184329	Compression Test: Prism								
04/18/2018	F184021	Field Report: Structural Steel, Job site								
04/18/2018	F184239	Field Report: Masonry								
04/18/2018	UT-818	Field Report: Nondestructive Testing	✓	✓						

ENGINEERED ASSURANCE SINCE 1981

Geotechnical Engineering • Materials Testing • Special Inspection • Environmental Consulting

[www.mtc-inc.net](http://www.mtc-inc.net)

## Client Recommendations



Materials Testing & Consulting, Inc.  
2118 Black Lake Boulevard SW  
Olympia, WA 98512

To whom it may concern,

It's my pleasure to express my gratitude and admiration to your firm for the recent Geotechnical Investigation and Report services you provided RSP for the Army Reserve Center at Joint Base Lewis McCord, Washington.

As part of our support for the Army Reserve program we provide design services to the Government for locations throughout the country. Whenever possible we engage locally based Geotechnical firms because of their regional familiarity and location based expertise, and in support of the communities our citizen soldiers live and work in. Consequently, we have the opportunity to work with a large number of firms across the country.

I can enthusiastically state that the professionalism, technical expertise, and client service shown us on the Joint Base Lewis McCord Army Reserve Center project is at the highest level of accomplishment that I have had the pleasure to experience.

From my initial inquires through the completion of your services I have found your firm to be engaged, responsive, responsible, supportive, and timely in your work. There were two features of your service that I particularly appreciated.

First, you were willing to engage with us regarding the typical testing requirements listed in our Request for Proposal. Your suggestions for changes made the testing program and the services consistent with site specific conditions and locally preferred testing methods while maintaining the critical report requirements. This added value while reducing the cost of the services. We taxpayers thank you!

Second, your firm took leadership in coordinating and obtaining all the necessary access approvals, on-site work requirements, and permitting necessary to conduct work at Joint Base Lewis McChord. I understand the challenges that can arise in conducting work on active duty military installations and personally appreciate how seamless you made this process.

In conclusion, it's been my pleasure to work with you and I hope that we will be able to team again in the future. I'm looking forward to it.

Sincerely,

A handwritten signature in black ink, appearing to read 'Mark Nelson', written in a cursive style.

Mark Nelson  
Project Manager

ENGINEERED ASSURANCE SINCE 1981

Geotechnical Engineering • Materials Testing • Special Inspection • Environmental Consulting

[www.mtc-inc.net](http://www.mtc-inc.net)



# Client Recommendations



John Bash  
Superintendent

621 Linwood Avenue SW Tumwater, WA 98512-6847  
(360) 709-7000 [www.tumwater.k12.wa.us](http://www.tumwater.k12.wa.us)

Student Learning:  
(360) 709-7030  
Financial Services:  
(360) 709-7010  
Human Resources:  
(360) 709-7020  
Payroll/Benefits:  
(360) 709-7029  
Special Services:  
(360) 709-7040  
Capital Projects:  
(360) 709-7005

Materials Testing & Consulting, Inc.  
777 Chrysler Drive  
Burlington, WA. 98233

July 31, 2017

RE: Letter of Recommendation

To Whom It May Concern:

As the Capital Projects Supervisor for Tumwater School District I have had the opportunity to work with Materials Testing & Consulting (MTC) on several large school projects, including P.G. Schmidt Elementary School, Littlerock Elementary School, Tumwater Middle School, Bush Middle School and numerous small ones. The projects include new, replacement and renovation construction in phases on sites with school in session. Their services for these projects included special inspection of reinforced concrete, structural masonry, proprietary anchor, reinforcing steel, structural steel and high-strength bolting, structural welding, relative humidity and vapor emissions testing, soil moisture and density and asphalt density testing, floor flatness testing and non-destructive testing services. All were done in a timely and efficient manner that helped keep the construction on schedule.

In my staff and my dealings with MTC, we find their team to be solid and reliable as well as experts in their field. They are experienced and knowledgeable, they carry out their duties diligently and their reports are always issued in a timely manner. Fees are fair and reasonable for the services rendered.

Tumwater School District has received exceptional service from Materials Testing & Consulting and would recommend them for construction testing an inspection for any project.

Sincerely,

Mel Murray, Supervisor  
Construction and Capital Projects  
(360) 709-7004

BOARD OF DIRECTORS  
MELISSA BEARD RITA LUCE KIM REYKDAL JANINE WARD JAY WOOD

*"Continuous Student Learning in a Caring, Engaging Environment"*

ENGINEERED ASSURANCE SINCE 1981

Geotechnical Engineering • Materials Testing • Special Inspection • Environmental Consulting

[www.mtc-inc.net](http://www.mtc-inc.net)

# Client Recommendations

April 25, 2017

Materials Testing & Consulting, Inc.  
777 Chrysler Drive  
Burlington, WA 98233  
(360) 755-1990

Subject: Letter of Recommendation for MTC

To Whom It May Concern:

Spectrum Development Solutions has worked closely with Materials Testing & Consulting on several projects, most recent projects from 2014 through 2016. MTC conducted materials testing & inspections services for the Reverb, Anthem and the Decibel mixed-use apartment building projects in the Seattle area. These services included:

- reinforcing, structural steel inspections
- concrete inspections
- lateral wood inspections
- high strength bolting inspections
- sprayed on fire resistant materials inspections
- shotcrete inspections
- fabrication shop inspections
- proprietary anchor inspections
- post-tensioning inspections
- materials testing services; rice density test, concrete compression test cylinders, shotcrete panel

Our experience during the last two year association with Materials Testing & Consulting has been very positive. Their inspectors remained objective and clarified any questions we had during the projects. They displayed sound technical knowledge, were on time and worked well with the project team. Also, their digitized reports were always issued in a timely manner.

I have no hesitancy in recommending the services of MTC. I do believe if you wish to pursue a business relationship with them that you will receive the same exceptional service. If you have any questions, feel free to contact me.

Sincerely,



Jake McKinstry  
Principal  
Spectrum Development Solutions  
1809 Seventh Ave. Suite 501  
Seattle, WA 98101  
(206) 393-8825

ENGINEERED ASSURANCE SINCE 1981

Geotechnical Engineering • Materials Testing • Special Inspection • Environmental Consulting

[www.mtc-inc.net](http://www.mtc-inc.net)

## Client Recommendations

Mark Nelson  
Project Manager  
RSP Architects, Ltd.  
(612) 677-7100  
Minneapolis, MN

"I can enthusiastically state that the professionalism, technical expertise, and client service shown to us on the JBLM Army Reserve Center project is at the highest level of accomplishment that I have had the pleasure to experience. From my initial inquiries through the completion of your services I have found (MTC) to be engaged, responsive, responsible, supportive, and timely in your work."

"Since 2001, The Tulalip Tribes Economic Development Division has had the great opportunity to work with MTC on various infrastructure projects. During that period of time they have performed special inspections on metal, concrete, asphalt and steel construction components both above ground and below. Their records are impeccably accurate and are used not only for daily project documentation, monthly contractor pay applications, but long term historical and audit documentation. We would highly recommend their services."

Debbie Bray  
Division Manager  
Tulalip Tribe  
(360) 716-0051  
Tulalip, WA

Mr. James R. Hill  
Project Architect  
Dept. of Enterprise  
(360) 902-7272  
Olympia, WA

"I have worked with Materials Testing & Consulting over the past several years on a number of projects as the testing consultant on my projects. They continue to be very professional in their oversight of each project, prompt in their response as issues arise, and dependable when called upon to respond when difficult time frames sometimes occur. They are prompt at producing reports, and their inspectors are knowledgeable and professional. I intend to continue using them on all of my projects, and I highly recommend them for any testing services needed."



*Thank you in advance for your time and consideration.  
We look forward to meeting with you!*

**Corporate Headquarters & Laboratory**  
777 Chrysler Drive, Burlington, WA 98233  
(360) 755-1990  
raymond.mcnamara@mtc-inc.net  
abby.jackson@mtc-inc.net

ENGINEERED ASSURANCE SINCE 1981

Geotechnical Engineering • Materials Testing • Special Inspection • Environmental Consulting

[www.mtc-inc.net](http://www.mtc-inc.net)