



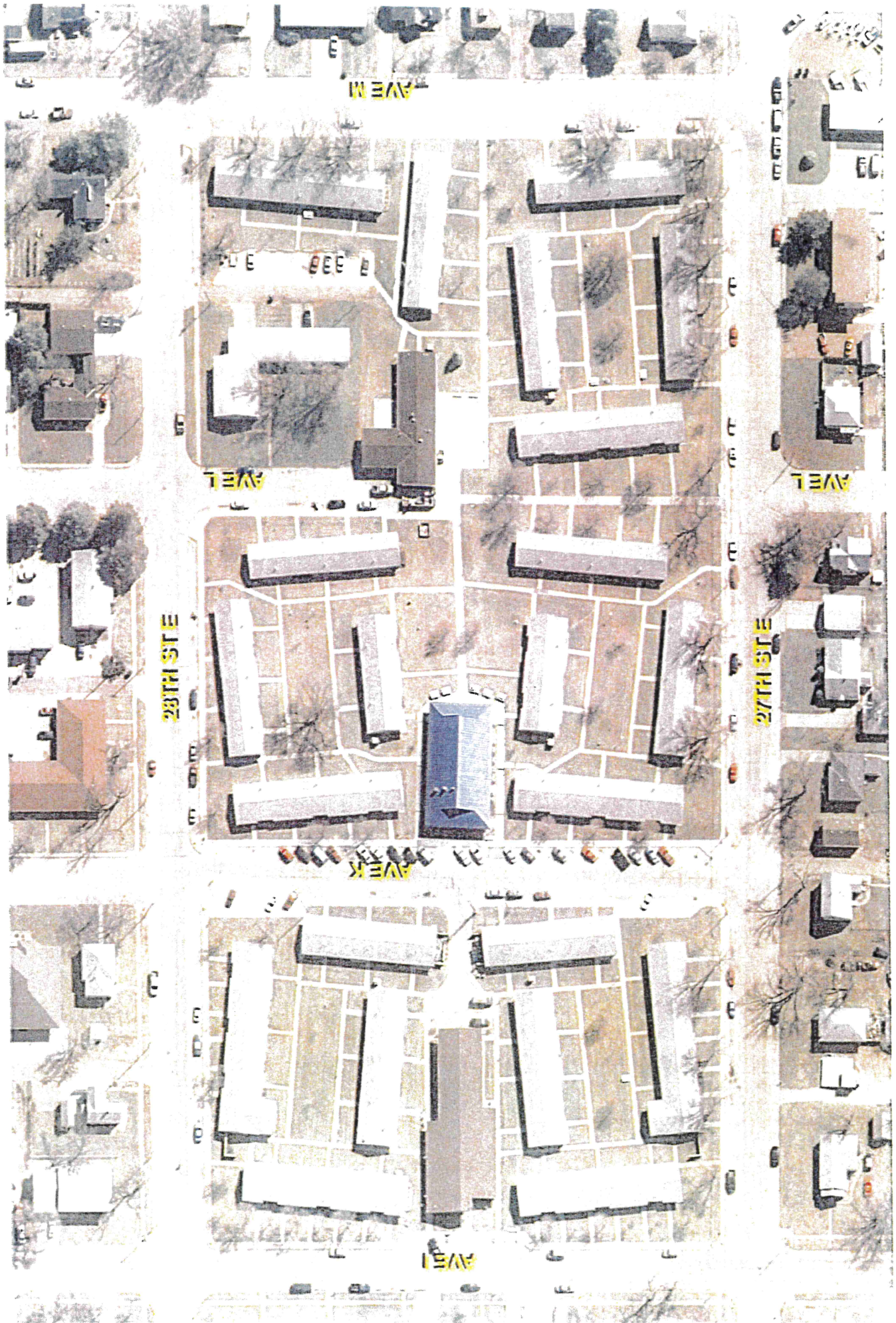
## **KEARNEY MANOR APARTMENTS**

**2715 AVENUE I, KEARNEY**

*Description:* Kearney Manor Apartments is public housing and has 118 apartments located in southeast Kearney. The apartments are bound on the south by 27<sup>th</sup> Street, on the west by Avenue I, on the north by 28<sup>th</sup> Street and on the east by Avenue N.

*Construction:* The west dwelling units at Kearney Manor were built in 1960 with the east dwelling units built in 1968. A laundry and Administration Building are located on the west section. A laundry room, shop area and the Community Building (Pavilion) are located on the east side. The parking lot is the vacated "K Street" dividing the east and west side of the development. The structure is wood frame, slab on grade with brick exterior. All buildings are single story. Mechanical rooms are accessed from the rear of the building. The Mechanical Rooms contain hot water heaters and forced-air furnaces. Heat pumps are located adjacent to the mechanical rooms. Cosmetic repairs are steel and vinyl siding, with asphalt roof shingles.









## SCATTERED SITE HOUSING

**Located in the Northeast, Southeast, Southwest and South Kearney**

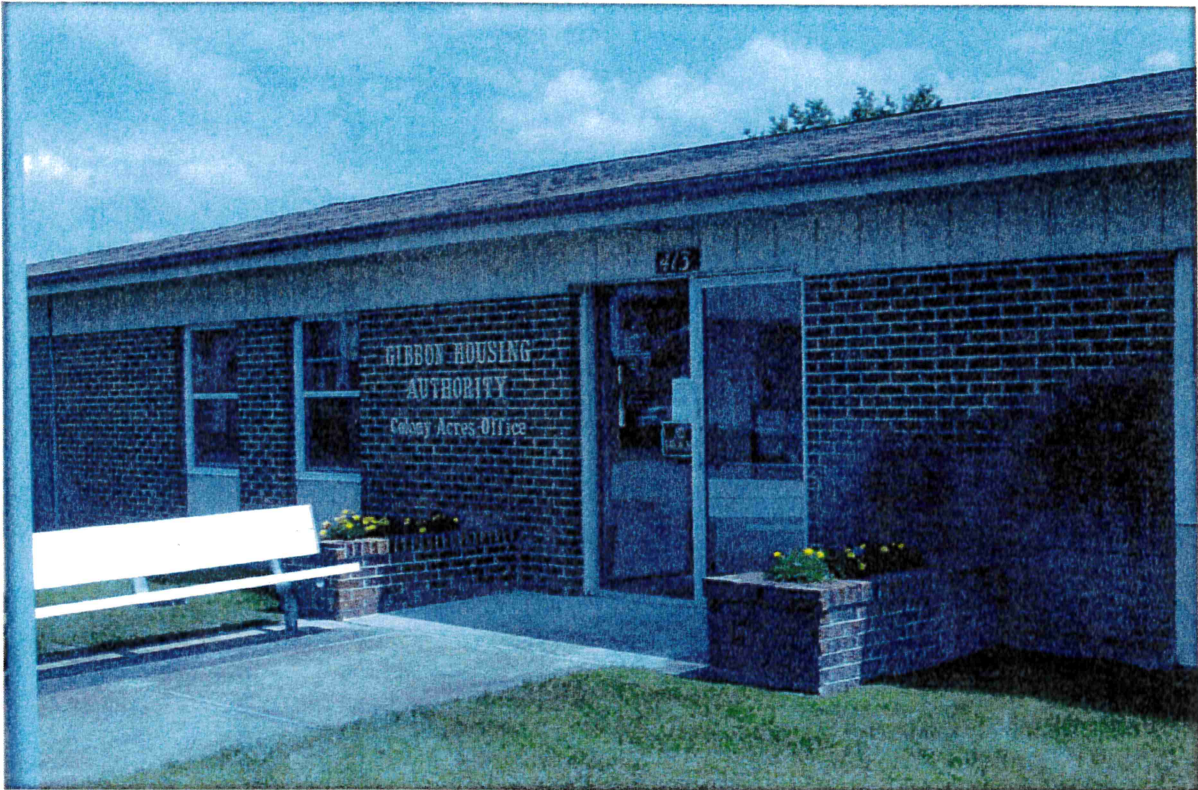
*Description:* Scattered Site homes were built with three different public housing development awards in 1992, 1994 and 1996.

*Construction:* Wood frame construction 2, 3 and 4 bedroom homes with either single-car or double-car attached garages.

### Scattered Site Addresses

1122 Avenue K	14 Meadow Lane	1103 Avenue I	34 Plaza Blvd
1123 Avenue K	19 Meadow Lane	1202 Avenue I	11 LaVista Road
1103 Avenue K	27 Meadow Lane	1203 Avenue I	30 LaVista Road
	30 Meadow Lane	1210 Avenue I	31 LaVista Road
1110 Avenue H	38 Meadow Lane	1211 Avenue I	
1122 Avenue H	43 Meadow Lane	1218 Avenue I	68 LaCrosse Drive
1203 Avenue H			76 LaCrosse Drive
1215 Avenue H	606 West 8th Street	1504 10th Avenue	
	611 West 8th Street	1510 10th Avenue	1503 12th Avenue
3403 Avenue S	702 West 8th Street		1510 12th Avenue
3404 Avenue S	710 West 8th Street	1410 11th Avenue	1515 12th Avenue
3411 Avenue S	711 West 8th Street	1418 11th Avenue	
3412 Avenue S	718 West 8th Street	1509 11th Avenue	1310 13th Avenue
3419 Avenue S	718 West 8th Street	1517 11th Avenue	1414 13th Avenue
3420 Avenue S			1331 15th Avenue
	4 Boa Drive	2207 E. 34th Street	1407 15th Avenue





## **COLONY ACRES APARTMENTS**

**413 1<sup>ST</sup> STREET, GIBBON**

*Description:* Colony Acres Apartments are public housing with a total of 40 apartments in seven buildings. Fourteen apartments are in the Annex Building built in 1982. In the Annex Building 12 apartments open into a central hallway, two apartments have only exterior exits and one apartment has an exterior exit and also opens into the central hallway. The other 26 apartments are located in six buildings with four, five or six apartments in each building, built in 1972. Colony Acres is located in east Gibbon bound on the north by 1<sup>st</sup> Street, on the east by Williams Street, on the south by 2<sup>nd</sup> Street and west by Garfield Street.

*Construction:* All the buildings are brick veneer and asphalt shingles. The single-story buildings were built in 1972 and the Annex was built in 1982. In addition, there is a community building with an office and laundry room. There is a small storage shed.









## **PIONEER APARTMENTS**

**306 C STREET, SHELTON**

*Description:* Shelton Pioneer Apartments are public housing with a total of 19 apartments in five buildings, built in 1966. Pioneer Apartments is just south of Highway 30 and the railroad. The apartments are bound on the north by 3<sup>rd</sup> Street, on the east by C Street, on the south by 4<sup>th</sup> Street and west by D Street.

*Construction:* All the buildings are brick veneer and asphalt shingles. The single-story buildings were built in 1967. In addition, there is a community building with an office and laundry room. There is a small storage shed.









**EAST VIEW COURT**  
**849 EAST 2<sup>ND</sup> STREET, MINDEN**

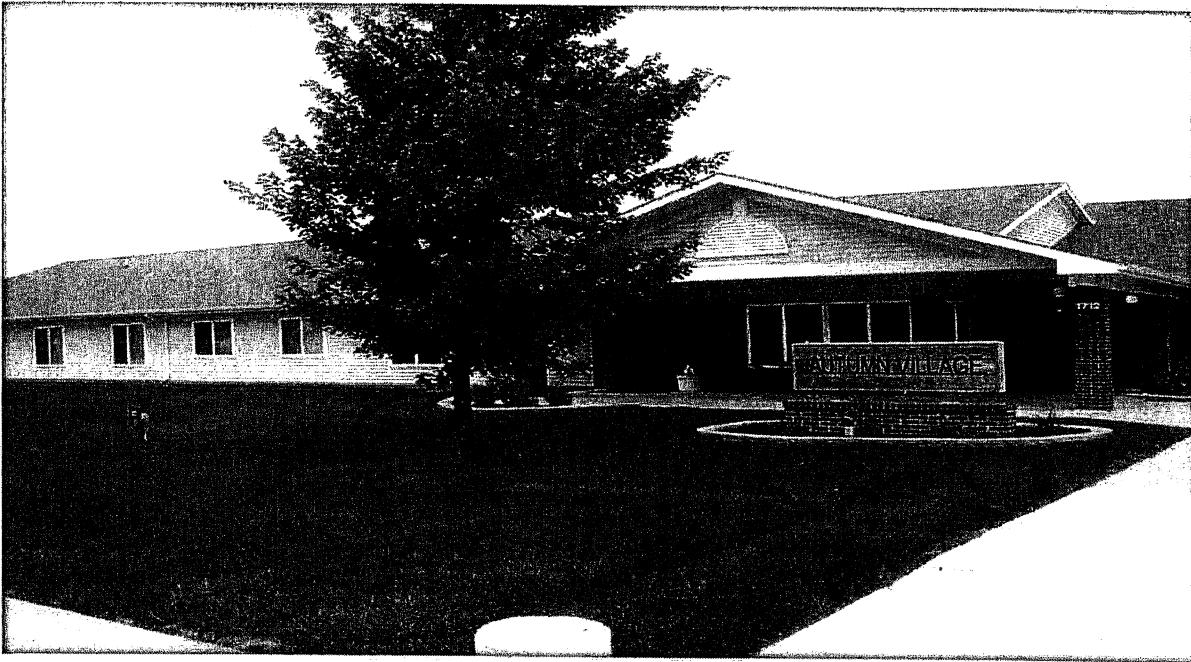
*Description:* East View Court is public housing with 28 apartments in eight buildings located in southeast Minden. The apartments are bound on the north by 2<sup>nd</sup> Street, on the east by non-designated "alley", on the south by 1<sup>st</sup> Street / Highway 74 and on the west by Garber Street.

*Construction:* These single-story buildings were built in 1966 with brick veneer and asphalt shingles. In addition, there is a community building and small storage shed. The laundry is located in the community building as is one apartment and the office.









**AUTUMN VILLAGE**  
**1712 39<sup>th</sup> AVENUE, KEARNEY**

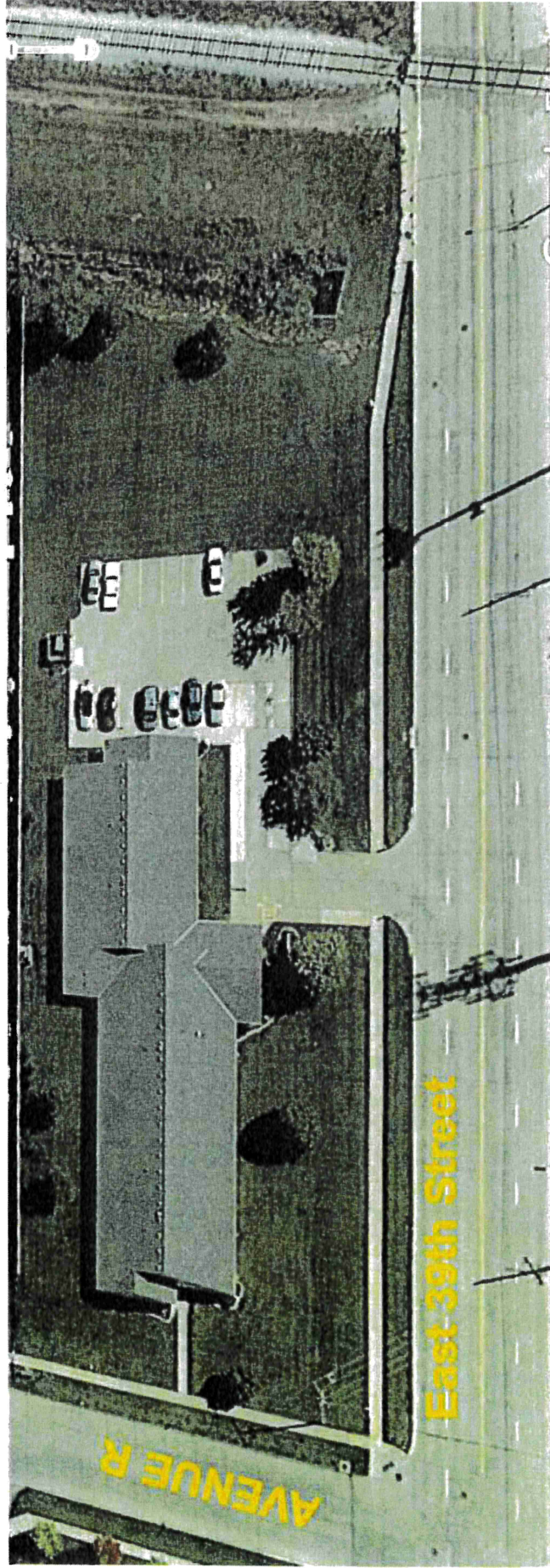
*Description:* Autumn Village is a Section 202 development and has 15 one-bedroom apartments located on East 39<sup>th</sup> Avenue in Kearney. The apartments are bound on the south by 39<sup>th</sup> Avenue, on the west by R Street, on the north by Westley Pointe Apartments and on the east by a drainage ditch and railroad.

*Construction:* The single-story building was built in 2001. The entry door is a controlled entry and all apartments open to a common hallway. The laundry, post office boxes and mechanical room are located within the building. Heating and cooling are supplied by a Geo-Thermal System. The building has vinyl siding and asphalt roof shingles. There is a KNOX box for firemen to access the building.

Occupants are seniors. Many use walkers, wheelchairs and/or canes.



# AUTUMN VILLAGE







**PLAZA BOULEVARD APARTMENTS**  
**50 PLAZA BOULEVARD, KEARNEY**

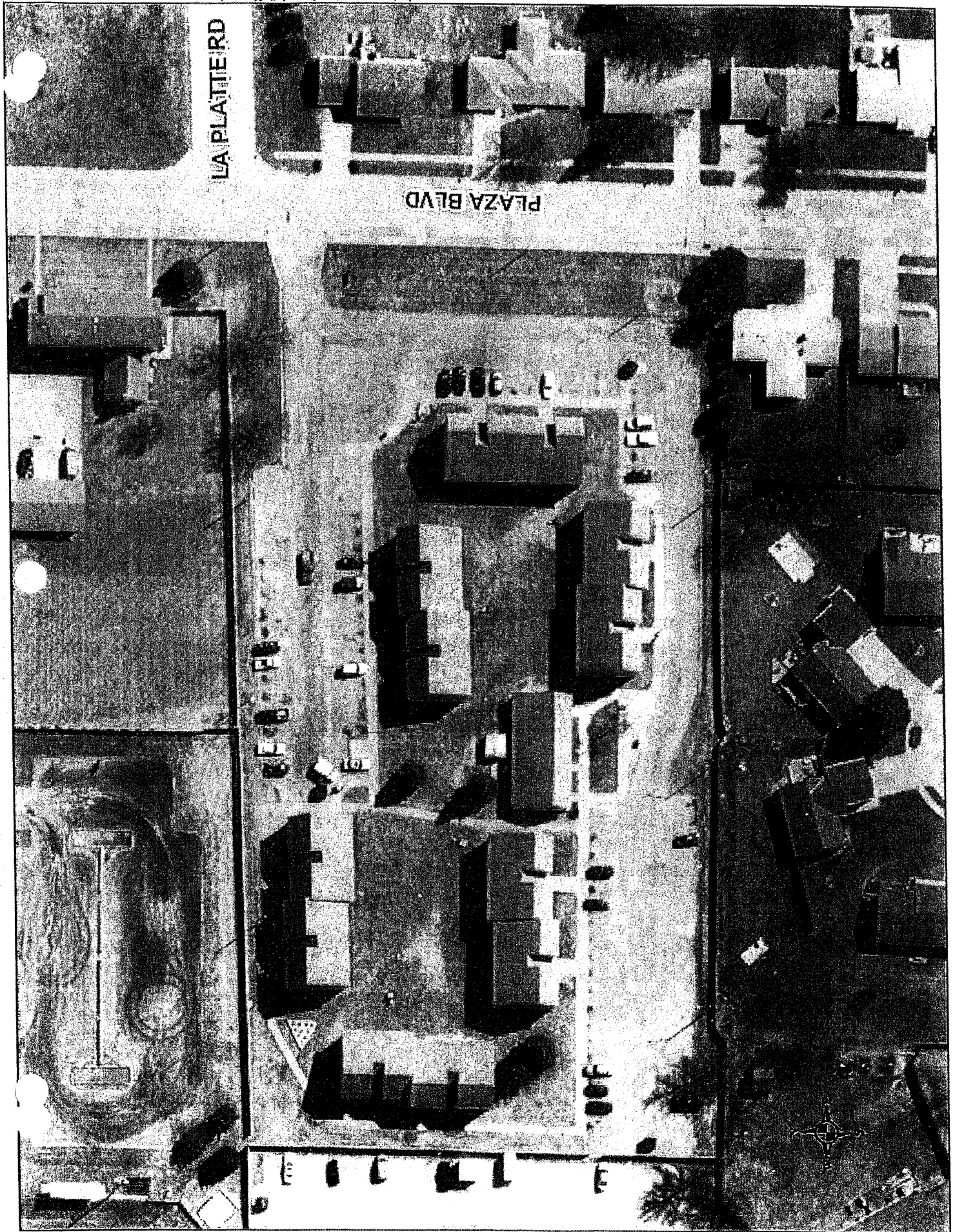
*Description:* Plaza Boulevard is USDA housing and has 48 apartments in six apartment buildings located in southwest Kearney. There are one and two-bedroom apartments which are bound on the east by Plaza Boulevard. Also, there is one building containing the laundry and office.

*Construction:* Wood frame construction built in 1978 and recent renovation including new cement board siding, energy-efficient windows, heat pumps and asphalt shingles. This is a two-story building with an outside stair access to the upper apartments.

This is a mixed population with families and children as well as seniors and persons with disabilities.



PLAZA BOULEYARD







**WINDMILL MANOR**  
**310 EAST 5<sup>TH</sup> STREET, AXTELL**

*Description:* Axtell Windmill Manor is multi-family housing with a total of eight one-bedroom apartments in one building, built in 1978. Windmill manor is just north of Highway Six. The apartments are bound on the north by East 6<sup>th</sup> Street, on the east by 3<sup>rd</sup> Avenue, on the south by East 5<sup>th</sup> Street and west by 2<sup>nd</sup> Avenue.

*Construction:* The building is brick veneer and asphalt shingles. The single-story building was built in 1978. In addition, there is a community room with an office, sunroom and a small storage shed.

Occupants are seniors and persons with disabilities. Many use walkers, wheelchairs and/or canes.





WINDMILL MANOR AXTELL