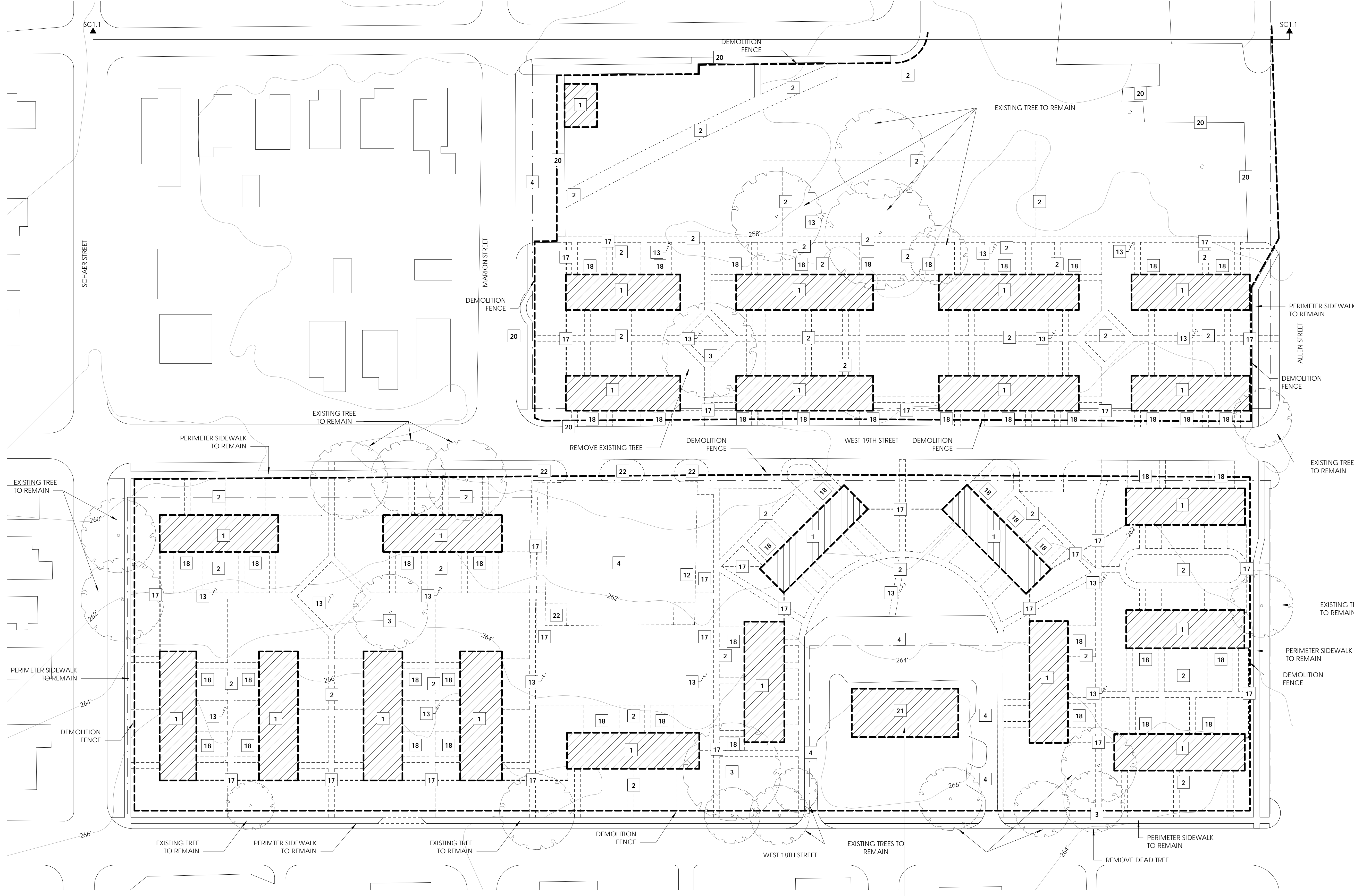


**SITE DEMOLITION KEY:**

- |                                       |  |                                     |   |  |  |
|---------------------------------------|--|-------------------------------------|---|--|--|
| 1 REMOVE EXISTING BUILDING            | 5 REMOVE EXISTING ASPHALT PAVEMENT               | 9 REMOVE EXISTING LANDSCAPE, SHRUB  | 13 REMOVE EXISTING LIGHTPOST & FOUNDATION | 17 REMOVE EXISTING RAILING & FOUNDATION  | 21 PROVIDE SEPARATE LINE ITEM TO REMOVE EXISTING STRUCTURE |
| 2 REMOVE EXISTING SIDEWALK            | 6 REMOVE EXISTING CONCRETE PAVEMENT              | 10 REMOVE EXISTING STORM STRUCTURES | 14 REMOVE EXISTING STORM INLET            | 18 REMOVE EXISTING TRASH COLLECTION SLAB | 22 REMOVE CONCRETE SLAB                                    |
| 3 REMOVE EXISTING TREE AND ROOT BALL  | 7 REMOVE EXISTING RETAINING WALL IN ITS ENTIRETY | 11 REMOVE EXISTING UTILITY          | 15 REMOVE EXISTING STORM SEWER            | 19 REMOVE EXISTING CLOTHES LINES         |  |
| 4 REMOVE EXISTING PARKING LOT & DRIVE | 8 REMOVE EXISTING SIGN                           | 12 REMOVE EXISTING ANTENNA          | 16 REMOVE STORM SEWER MANHOLE             | 20 REMOVE EXISTING BOLLARDS              |  |

**GENERAL DEMOLITION NOTES:**

- Demolition Contractor to include removing the environmental hazardous material prior to building structure demolition. Must use a properly licensed abatement contractor. Refer to specifications for existing environmental asbestos reports.
- The work includes capping and plugging the utilities, with all equipment, materials, and labor in accordance with local requirements. The Contractor is responsible for disconnection of utilities and plugging of sewer line.
- The Contractor shall contract the local utility companies prior to commencing work to coordinate termination of gas, water, electric, phone, cable tv, and any other utility services to the nearest acceptable point.
- Items to be abandoned in place or capped but not necessarily removed:
  - Gas line shut off and cap at priority line.
  - Cap the active sewer line within 10 feet of the manhole, abandon line in place (manholes to remain).
  - Cap the water main at the property line.
- Remove existing water meter boxes, valves, and water lines.
- Remove telephone pedestals.
- Demolition of light and utility poles shall include, but not be limited to, removal of all footers and all other above and below ground materials and appurtenances.
- Electrical disconnections shall be performed by a licensed electrician. The electrical system shall be disconnected at the power source.
- The Contractor shall check the structures prior to demolition to insure that the properties are vacated.
- After removal of building slabs and foundation walls, Contractor to provide the appropriate fill and proper compaction per specifications in these areas.



**1 SITE DEMOLITION PLAN**  
1" = 40'-0"

PROVIDE SEPARATE LINE ITEM TO DEMO CARELINK BUILDING - 701 W. 18TH STREET - SEE BID FORM IN SPECS. (INCLUDE SURROUNDING PARKING LOT)

**FENNEL PURIFOY**  
ARCHITECTS  
100 MORGAN KEEGAN DRIVE, SUITE 320 · LITTLE ROCK, AR 72202  
T 501.372.6734 · F 501.372.6736



**NLRHA - SILVER CITY**  
NORTH LITTLE ROCK, ARKANSAS

REVISIONS:

JUNE 16, 2020

SILVER CITY DEMOLITION PLAN  
SC1.0

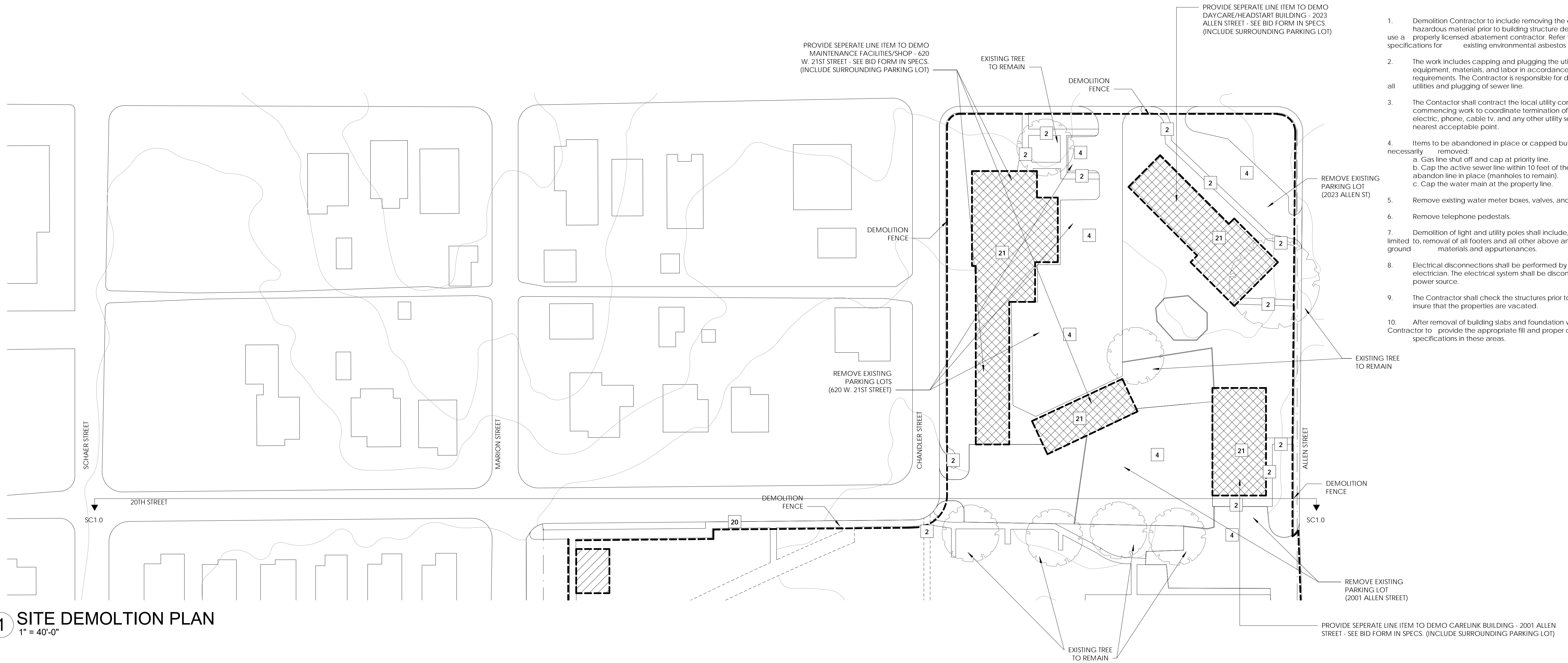


**SITE DEMOLITION KEY:**

|   |  |                                     |   |  |  |
|---|--|-------------------------------------|---|--|--|
| 1 REMOVE EXISTING BUILDING                    | 5 REMOVE EXISTING ASPHALT PAVEMENT               | 9 REMOVE EXISTING LANDSCAPE, SHRUB  | 13 REMOVE EXISTING LIGHTPOST & FOUNDATION | 17 REMOVE EXISTING RAILING & FOUNDATION  | 21 PROVIDE SEPERATE LINE ITEM TO REMOVE EXISTING STRUCTURE |
| 2 REMOVE EXISTING SIDEWALK                    | 6 REMOVE EXISTING CONCRETE PAVEMENT              | 10 REMOVE EXISTING STORM STRUCTURES | 14 REMOVE EXISTING STORM INLET            | 18 REMOVE EXISTING TRASH COLLECTION SLAB | 22 REMOVE CONCRETE SLAB                                    |
| 3 REMOVE EXISTING TREE AND ROOT BALL ENTIRETY | 7 REMOVE EXISTING RETAINING WALL IN ITS ENTIRETY | 11 REMOVE EXISTING UTILITY          | 15 REMOVE EXISTING STORM SEWER            | 19 REMOVE EXISTING CLOTHES LINES         |  |
| 4 REMOVE EXISTING PARKING LOT & DRIVE         | 8 REMOVE EXISTING SIGN                           | 12 REMOVE EXISTING ANTENNA          | 16 REMOVE STORM SEWER MANHOLE             | 20 REMOVE EXISTING BOLLARDS              |  |

**GENERAL DEMOLITION NOTES:**

- Demolition Contractor to include removing the environmental hazardous material prior to building structure demolition. Must use a properly licensed abatement contractor. Refer to existing environmental asbestos reports.
- The work includes capping and plugging the utilities, with all equipment, materials, and labor in accordance with local requirements. The Contractor is responsible for disconnection of all utilities and plugging of sewer line.
- The Contractor shall contract the local utility companies prior to commencing work to coordinate termination of gas, water, electric, phone, cable tv, and any other utility services to the nearest acceptable point.
- Items to be abandoned in place or capped but not necessarily removed:
  - Gas line shut off and cap at priority line.
  - Cap the active sewer line within 10 feet of the manhole, abandon line in place (manholes to remain).
  - Cap the water main at the property line.
- Remove existing water meter boxes, valves, and water lines.
- Remove telephone pedestals.
- Demolition of light and utility poles shall include, but not be limited to, removal of all footers and all other above and below ground materials and appurtenances.
- Electrical disconnections shall be performed by a licensed electrician. The electrical system shall be disconnected at the power source.
- The Contractor shall check the structures prior to demolition to insure that the properties are vacated.
- After removal of building slabs and foundation walls, Contractor to provide the appropriate fill and proper compaction per specifications in these areas.



**1 SITE DEMOLITION PLAN**  
1" = 40'-0"

**NLRHA - SILVER CITY**  
NORTH LITTLE ROCK, ARKANSAS

REVISIONS:

JUNE 16, 2020

SILVER CITY DEMOLITION PLAN  
SC1.1

