



## The Littleton Group-Western Division Inc

---

302 North Willis, Suite 8  
Abilene, TX 79603  
(325) 676-8771 office  
(325) 676-8780 fax

Insured: Abilene Housing Authority  
Property: ID #74, Unit D29-D30, 2250 Vogel St  
Abilene, TX 79603  
Business: 1149 East South 11th Street  
Abilene, TX 79602

Home: (325) 676-6032



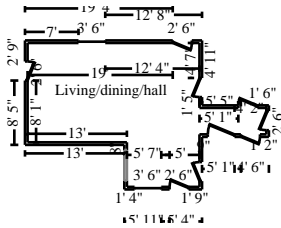
**The Littleton Group-Western Division Inc**

302 North Willis, Suite 8  
 Abilene, TX 79603  
 (325) 676-8771 office  
 (325) 676-8780 fax

**LG117290**

**SKETCH 1**

**Main Level**



**Living/dining/hall**

**Height: 8'**

590.00 SF Walls	378.18 SF Ceiling
968.18 SF Walls & Ceiling	378.18 SF Floor
42.02 SY Flooring	72.67 LF Floor Perimeter
100.17 LF Ceil. Perimeter	

<b>Door</b>	<b>2' 6" X 6' 8"</b>	<b>Opens into Exterior</b>
<b>Missing Wall - Goes to Floor</b>	<b>4' X 6' 8"</b>	<b>Opens into Exterior</b>
<b>Door</b>	<b>2' 6" X 6' 8"</b>	<b>Opens into Exterior</b>
<b>Window</b>	<b>3' 6" X 4'</b>	<b>Opens into Exterior</b>
<b>Door</b>	<b>2' 6" X 6' 8"</b>	<b>Opens into Exterior</b>
<b>Door</b>	<b>2' 6" X 6' 8"</b>	<b>Opens into Exterior</b>
<b>Door</b>	<b>3' 6" X 6' 8"</b>	<b>Opens into Exterior</b>
<b>Door</b>	<b>2' 6" X 6' 8"</b>	<b>Opens into Exterior</b>
<b>Door</b>	<b>2' 6" X 6' 8"</b>	<b>Opens into Exterior</b>
<b>Door</b>	<b>2' 6" X 6' 8"</b>	<b>Opens into Exterior</b>
<b>Window</b>	<b>3' 6" X 4'</b>	<b>Opens into Exterior</b>
<b>Door</b>	<b>2' 6" X 6' 8"</b>	<b>Opens into Exterior</b>

DESCRIPTION	QUANTITY	UNIT PRICE	TAX	RCV	DEPREC.	ACV
Contents - move out *	1.00	EA				
Remove Baseboard - 2 1/4"	19.00	LF				
Replace Baseboard - 2 1/4"	19.00	LF				
Remove 1/2" drywall - hung, taped, floated, ready for paint	968.18	SF				
Replace 1/2" drywall - hung, taped, floated, ready for paint	968.18	SF				
Remove Batt insulation - 4" - R13 - paper / foil faced	590.00	SF				
Replace Batt insulation - 4" - R13 - paper / foil faced	590.00	SF				
Remove Seal plate - 2" x 4" treated lumber*	22.50	LF				
Replace Seal plate - 2" x 4" treated lumber*	22.50	LF				
Remove Bottom plate - 2" x 4"	22.50	LF				
Replace Bottom plate - 2" x 4"	22.50	LF				
Replace Electrical - Labor & Material Minimum*	1.00	EA				
Remove Stud wall - 2" x 3" x 8' - 16" oc	22.50	LF				
Replace Stud wall - 2" x 3" x 8' - 16" oc	22.50	LF				
Remove Exterior door - metal - insulated - flush or panel style	1.00	EA				



**The Littleton Group-Western Division Inc**

302 North Willis, Suite 8  
 Abilene, TX 79603  
 (325) 676-8771 office  
 (325) 676-8780 fax

**CONTINUED - Living/dining/hall**

DESCRIPTION	QUANTITY	UNIT PRICE	TAX	RCV	DEPREC.	ACV
Replace Exterior door - metal - insulated - flush or panel style	1.00	EA				
Remove Casing - 2 1/4"	17.00	LF				
Replace Casing - 2 1/4"	17.00	LF				
Remove Door threshold	1.00	EA				
Replace Door threshold	1.00	EA				
Prime & paint door slab only - exterior (per side)	1.00	EA				
Seal & paint door/window trim & jamb - (per side)	2.00	EA				
Seal & paint casing - two coats	17.00	LF				
Replace Door lockset - exterior	1.00	EA				
Seal & paint baseboard - two coats	72.67	LF				
Seal & paint window sill	5.00	LF				
Remove Vinyl tile - Standard grade	378.18	SF				
Replace Vinyl tile - Standard grade	378.18	SF				
Seal/prime then paint the walls and ceiling (2 coats)	968.18	SF				

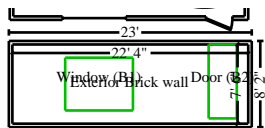
**Totals: Living/dining/hall**

**Total: Main Level**

**Total: SKETCH 1**

**SKETCH2**

**Main Level**



**Exterior Brick wall**

**Height: 8'**

477.33 SF Walls	167.50 SF Ceiling
644.83 SF Walls & Ceiling	167.50 SF Floor
18.61 SY Flooring	59.67 LF Floor Perimeter
59.67 LF Ceil. Perimeter	

DESCRIPTION	QUANTITY	UNIT PRICE	TAX	RCV	DEPREC.	ACV
Remove Board-up building penetrations - after hours*	58.40	SF				
Replace Board-up building penetrations - after hours*	58.40	SF				
Detach & Reset Window screen, 26 - 32 SF	1.00	EA				



**The Littleton Group-Western Division Inc**

302 North Willis, Suite 8  
Abilene, TX 79603  
(325) 676-8771 office  
(325) 676-8780 fax

**CONTINUED - Exterior Brick wall**

DESCRIPTION	QUANTITY	UNIT PRICE	TAX	RCV	DEPREC.	ACV
Remove Trim board - 1" x 6" - installed (hardwood - oak or =)	22.50	LF				
Replace Trim board - 1" x 6" - installed (hardwood - oak or =)	22.50	LF				
Remove Sheathing - OSB - 5/8"	167.50	SF				
Replace Sheathing - OSB - 5/8"	167.50	SF				
Remove House wrap (air/moisture barrier)	167.50	SF				
Replace House wrap (air/moisture barrier)	167.50	SF				
Replace Brick veneer - Detach & reset	167.50	SF				
Remove Brick lintel - steel	4.00	LF				
Replace Brick lintel - steel	4.00	LF				
Replace Brick - Add for rowlock course	9.00	LF				
Seal & paint trim - two coats	22.50	LF				
Remove House numbers/letters - plastic or metal - up to 4"	1.00	EA				
Replace House numbers/letters - plastic or metal - up to 4"	1.00	EA				
Remove Storm door assembly - Standard grade	1.00	EA				
Replace Storm door assembly - Standard grade	1.00	EA				
Remove Exterior light fixture	1.00	EA				
Replace Exterior light fixture	1.00	EA				

**Totals: Exterior Brick wall**

**Total: Main Level**

**Total: SKETCH2**

**Miscellaneous**

DESCRIPTION	QUANTITY	UNIT PRICE	TAX	RCV	DEPREC.	ACV
Dumpster load - Approx. 12 yards, 1-3 tons of debris	1.00	EA				
Replace Hotel Bill for Tenants*	1.00	EA				

**Totals: Miscellaneous**

**Line Item Totals: LG117290**



## The Littleton Group-Western Division Inc

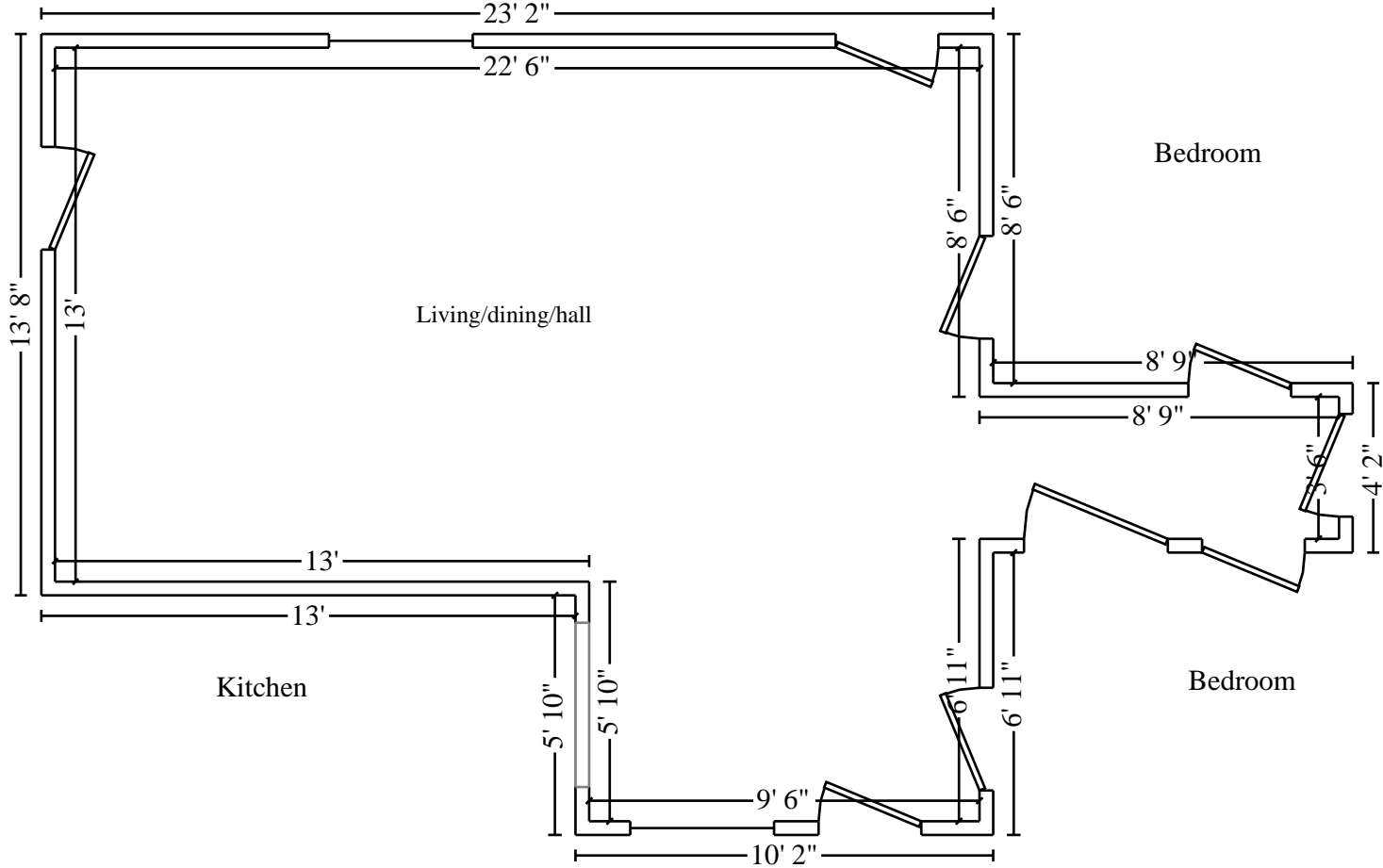
---

302 North Willis, Suite 8  
Abilene, TX 79603  
(325) 676-8771 office  
(325) 676-8780 fax

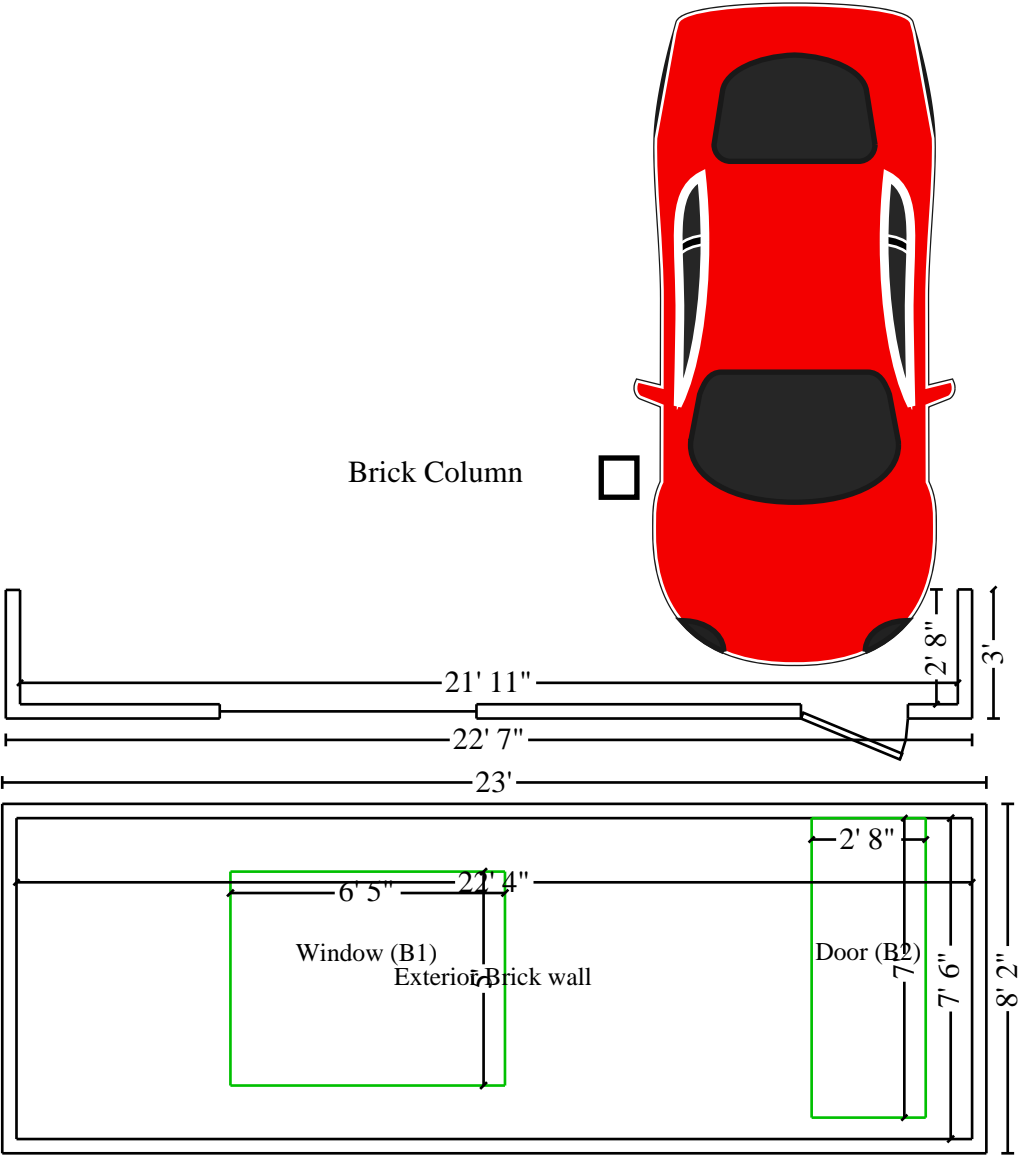
### Grand Total Areas:

1,067.33 SF Walls	545.68 SF Ceiling	1,613.01 SF Walls and Ceiling
545.68 SF Floor	60.63 SY Flooring	132.33 LF Floor Perimeter
0.00 SF Long Wall	0.00 SF Short Wall	159.83 LF Ceil. Perimeter
545.68 Floor Area	599.84 Total Area	1,067.33 Interior Wall Area
1,702.71 Exterior Wall Area	221.04 Exterior Perimeter of Walls	
0.00 Surface Area	0.00 Number of Squares	0.00 Total Perimeter Length
0.00 Total Ridge Length	0.00 Total Hip Length	

Bedroom



Main Level



Main Level