

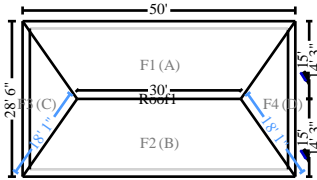
# Gallagher Bassett

1630 Des Peres Road, Suite 140  
St. Louis, MO 63131-1871

2020-10-19-1729

## SKETCH1

### Main Level



### Roof1

1517.18	Surface Area	15.17	Number of Squares
157.00	Total Perimeter Length	30.00	Total Ridge Length
72.18	Total Hip Length		

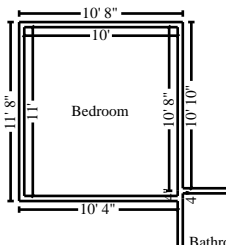
### DESCRIPTION

DESCRIPTION	QTY
1. Remove Laminated - comp. shingle rfg. - w/ felt	7.59 SQ
4. R&R Continuous ridge vent - shingle-over style	30.00 LF
5. R&R Sheathing - plywood - 1/2" - treated	379.30 SF
6. R&R Roof vent - turtle type - Metal	5.00 EA
7. R&R Flashing - pipe jack	4.00 EA
3. Laminated - comp. shingle rfg. - w/ felt	9.00 SQ

NOTES:

### Interior

### Main Level



### Bedroom

Height: 8'

336.00	SF Walls	110.00	SF Ceiling
446.00	SF Walls & Ceiling	110.00	SF Floor
12.22	SY Flooring	42.00	LF Floor Perimeter
42.00	LF Ceil. Perimeter		

### DESCRIPTION

DESCRIPTION	QTY
17. Contents - move out then reset - Large room	1.00 EA
10. R&R 5/8" drywall - hung, taped, floated, ready for paint	55.00 SF

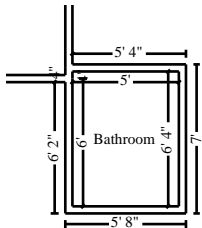
## Gallagher Bassett

1630 Des Peres Road, Suite 140  
St. Louis, MO 63131-1871

### CONTINUED - Bedroom

DESCRIPTION	QTY
11. Seal/prime then paint the walls and ceiling (2 coats)	446.00 SF
15. R&R Blown-in insulation - 14" depth - R38	110.00 SF
19. Light fixture - Detach & reset	1.00 EA
21. Heat/AC register - Mechanically attached - Detach & reset	1.00 EA
29. Clean register - heat / AC	1.00 EA
25. Clean floor, strip & wax	110.00 SF
33. Framing - Labor Minimum	1.00 EA
34. R&R Truss - 4/12 slope	108.00 LF

NOTES:



### Bathroom

Height: 8'

181.33 SF Walls	31.67 SF Ceiling
213.00 SF Walls & Ceiling	31.67 SF Floor
3.52 SY Flooring	22.67 LF Floor Perimeter
22.67 LF Ceil. Perimeter	

DESCRIPTION	QTY
27. R&R Stud wall - 2" x 4" - 16" oc	90.67 SF
31. R&R Countertop - Tile	90.67 SF
35. R&R Tile tub surround - 60 to 75 SF	1.00 EA
38. R&R Batt insulation - 4" - R13 - unfaced batt	181.33 SF
39. Seal/prime then paint the ceiling (2 coats)	31.67 SF
40. Seal/prime then paint part of the walls (2 coats)	90.67 SF
41. R&R Aluminum window, single hung 9-12 sf (2 pane w/thermal)	1.00 EA
43. Clean floor, strip & wax	31.67 SF
44. R&R Toilet	1.00 EA
46. R&R Toilet seat	1.00 EA

**Gallagher Bassett**

1630 Des Peres Road, Suite 140  
St. Louis, MO 63131-1871

**CONTINUED - Bathroom**

<b>DESCRIPTION</b>	<b>QTY</b>
47. Toilet paper holder	1.00 EA

NOTES:

**Debris Removal**

<b>DESCRIPTION</b>	<b>QTY</b>
49. Dumpster load - Approx. 12 yards, 1-3 tons of debris	1.00 EA

NOTES:

**Exterior**

<b>DESCRIPTION</b>	<b>QTY</b>
50. Masonry - Labor Minimum	1.00 EA
52. R&R Soffit - box framing - 2' overhang	25.00 LF
54. Soffit vent - linear	20.00 LF
55. R&R Fascia - metal - 6"	35.00 LF

NOTES:

## Gallagher Bassett

---

1630 Des Peres Road, Suite 140  
St. Louis, MO 63131-1871

### Labor Minimums Applied

DESCRIPTION	QTY
9. Drywall labor minimum	1.00 EA
20. Electrical labor minimum	1.00 EA
22. Heat, vent, & air cond. labor minimum	1.00 EA
26. Floor cleaning labor minimum	1.00 EA
30. Cleaning labor minimum	1.00 EA
42. Window labor minimum	1.00 EA
45. Plumbing labor minimum	1.00 EA
48. Finish hardware labor minimum	1.00 EA

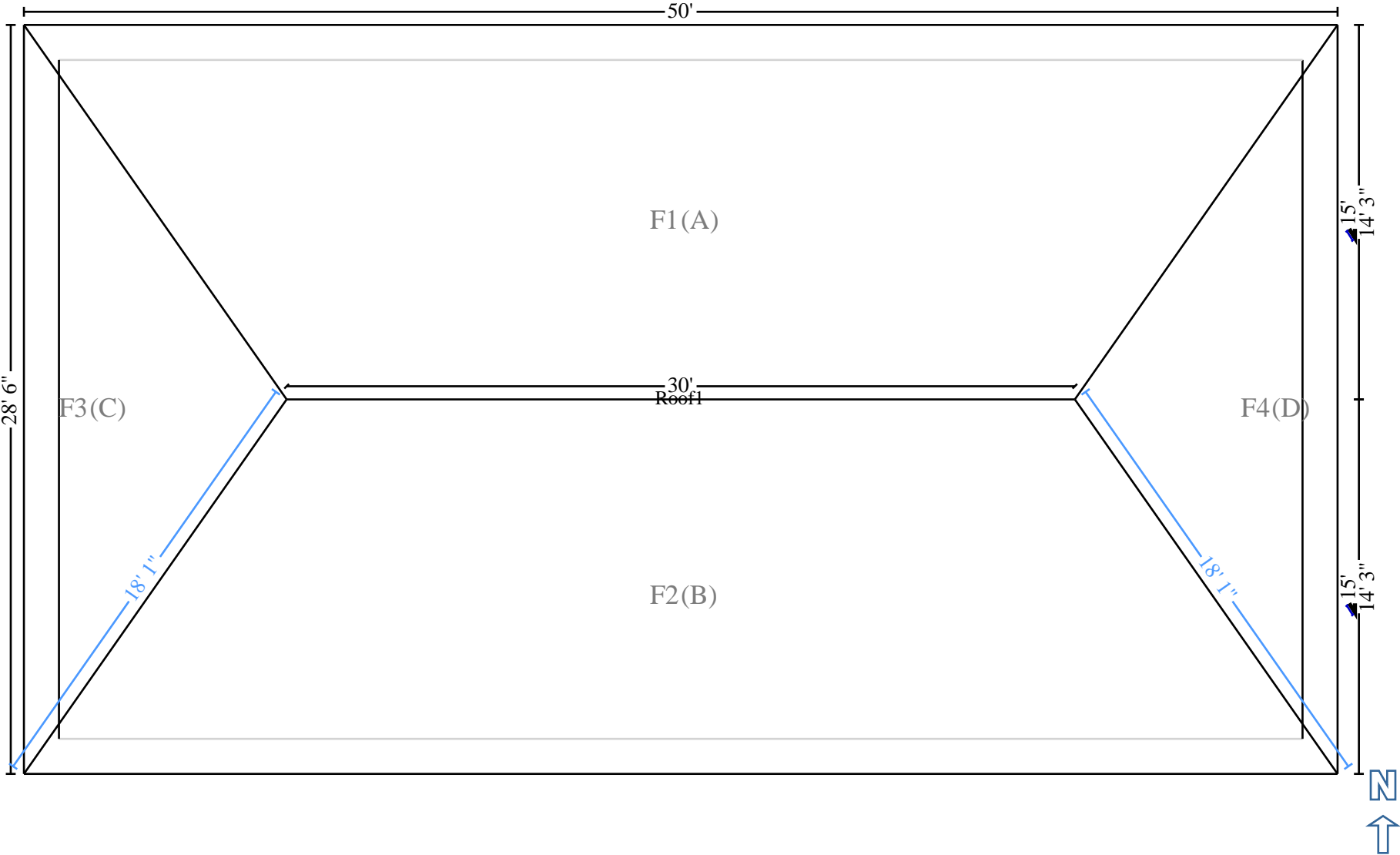
---

NOTES:

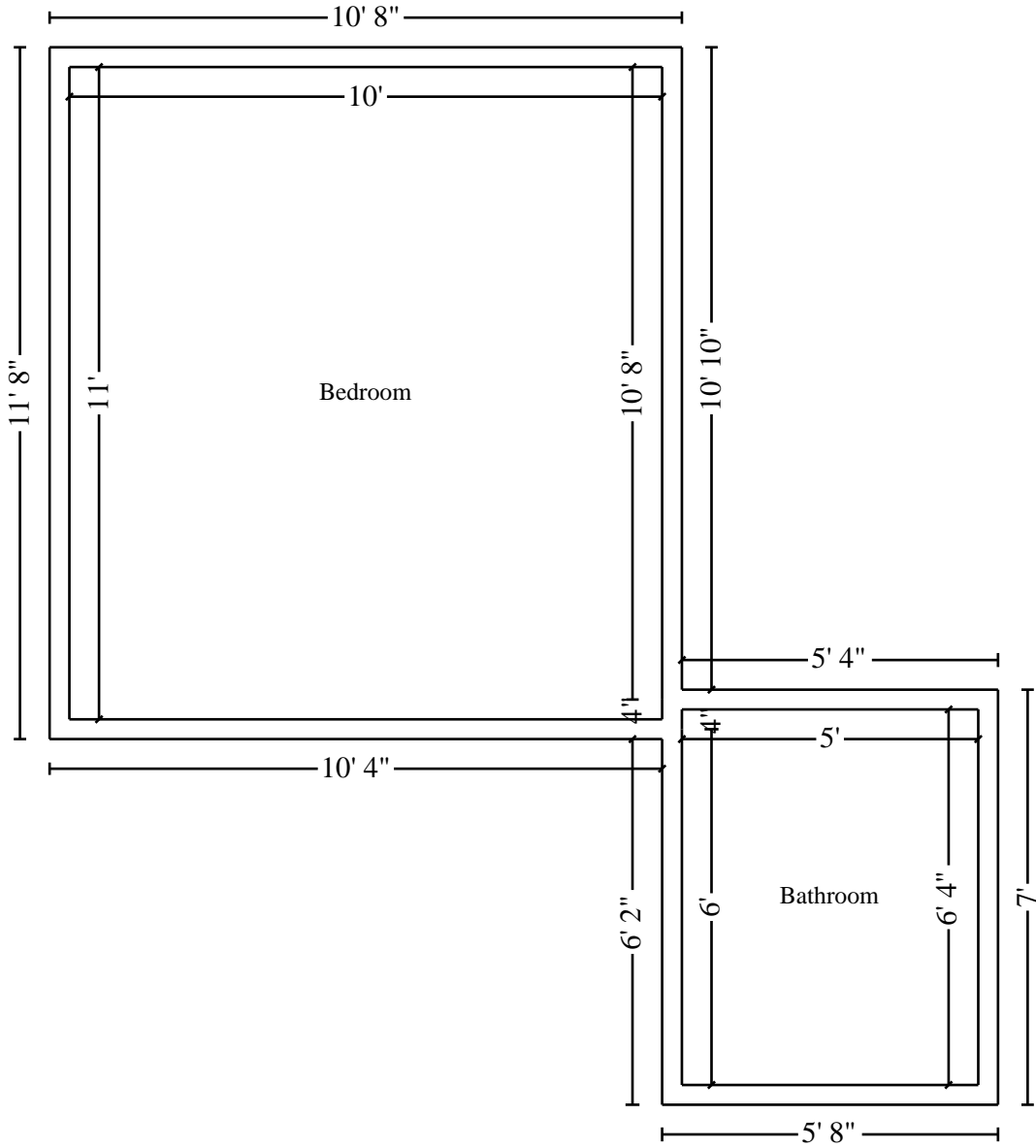
---

### Grand Total Areas:

517.33 SF Walls	141.67 SF Ceiling	659.00 SF Walls and Ceiling
141.67 SF Floor	15.74 SY Flooring	64.67 LF Floor Perimeter
0.00 SF Long Wall	0.00 SF Short Wall	64.67 LF Ceil. Perimeter
141.67 Floor Area	163.83 Total Area	517.33 Interior Wall Area
618.55 Exterior Wall Area	67.67 Exterior Perimeter of Walls	
1,517.18 Surface Area	15.17 Number of Squares	0.00 Total Perimeter Length
30.00 Total Ridge Length	72.18 Total Hip Length	



Main Level



Main Level

**Gallagher Bassett**

---

1630 Des Peres Road, Suite 140  
St. Louis, MO 63131-1871



1 1-s1  
Tree fell onto rear elevation

## Gallagher Bassett

---

1630 Des Peres Road, Suite 140  
St. Louis, MO 63131-1871



2 2-s2  
Bathroom damage



**Gallagher Bassett**

1630 Des Peres Road, Suite 140  
St. Louis, MO 63131-1871



3 3-s3  
Bedroom damage

**Gallagher Bassett**

1630 Des Peres Road, Suite 140  
St. Louis, MO 63131-1871



4 4-s4  
Rear slope damage