

# CHA - BARBEE TOWERS RENOVATION

1100 E. DRUID ROAD  
CLEARWATER, FLORIDA 33756



**BDG PROJECT NUMBER: 19079.00**

CONSTRUCTION DOCUMENTS: MAY 29, 2020

**CLIENT**

CHA - BARBEE TOWERS  
1100 E. DRUID ROAD  
CLEARWATER, FLORIDA 33756  
(727) 461-5777 EXT. 220  
MCvetinovic@clearwaterhousingauth.org

CONTACT: MIKKI CVETINOVIC

**CLIENT APPROVAL:**

SIGNATURE:

DATE

**ARCHITECT**

BESSOLO DESIGN GROUP  
7901 4TH ST. NORTH, SUITE 200  
ST. PETERSBURG, FLORIDA 33702  
(727) 894-4453  
rwillmann@bessolo.com

CONTACT: RICHARD WILLMANN

**STRUCTURAL**

KEM ENGINEERS  
7901 4TH ST. NORTH, SUITE 200  
ST. PETERSBURG, FLORIDA 33702  
(727) 894-4668  
dcoorey@kemengineers.com

CONTACT: DANIEL J. COOREY, P.E.

**MECH. / PLUMB.**

KEM ENGINEERS  
7901 4TH ST. NORTH, SUITE 200  
ST. PETERSBURG, FLORIDA 33702  
(727) 894-4668  
gclements@kemengineers.com

CONTACT: GREGORY M. CLEMENTS, PE

**ELECTRICAL**

KEM ENGINEERS  
7901 4TH ST. NORTH, SUITE 200  
ST. PETERSBURG, FLORIDA 33702  
(727) 894-4668  
rmartinez@kemengineers.com

CONTACT: NESTER MARTINEZ, PE

**INTERIOR DESIGN**

BESSOLO DESIGN GROUP  
7901 4TH ST. NORTH, SUITE 200  
ST. PETERSBURG, FLORIDA 33702  
(727) 894-4453  
vestep@bessolo.com

CONTACT: VANESSA ESTEP, IIDA

**CONSTRUCTION  
ADMINISTRATOR**

BESSOLO DESIGN GROUP  
7901 4TH ST. NORTH, SUITE 200  
ST. PETERSBURG, FLORIDA 33702  
(727) 894-4453  
projectcoordinator@bessolo.com

CONTACT: BRIANNA DOUGHERTY

ABBREVIATIONS

GENERAL NOTES

INDEX OF DRAWINGS

Table of abbreviations for architectural and construction terms, including floor types, materials, and structural elements.

- GENERAL NOTES: 1. ALL WORK SHALL COMPLY WITH THE BUILDING CODE OF THE STATE OF FLORIDA... 2. THE CONTRACTOR(S) SHALL PROVIDE ALL LABOR, MATERIALS, EQUIPMENT AND INCIDENTALS NECESSARY AND/OR REQUIRED TO PERFORM AND COMPLETE THE ENTIRE PROJECT...

SCOPE: THIS PROJECT WILL PERTAIN TO RENOVATION OF THE COMMON AREAS ON THE GROUND FLOOR AND HALLWAYS ON ALL FLOORS. THE AIM OF THE PROJECT IS TO MODERNIZE THE BUILDING AND BRING IT TO A MORE CONTEMPORARY DESIGN WITH BRIGHTER FLOOR SPACES.

INDEX OF DRAWINGS table listing sheet numbers and titles for various drawing types like GENERAL, ARCHITECTURAL, MECHANICAL, ELECTRICAL, and PLUMBING.

BESSOLO DESIGN GROUP, INC. ARCHITECTURE ■ DEVELOPMENT License #AA-C00217 7901 4TH ST. NORTH, SUITE 200 ST. PETERSBURG, FL 33702 727 894-4453 www.bessolo.com

PROFESSIONAL SEAL KEVIN J. BESSOLO ARCHT 2009

CODES REFERENCED

- 2017 - FLORIDA BUILDING CODE SIXTH EDITION
2017 - FLORIDA BUILDING CODE EXISTING BUILDING SIXTH EDITION
2017 - FLORIDA MECHANICAL CODE
2012 - NFPA 101 LIFE SAFETY CODE
2009 - NFPA 1 UNIFORM FIRE CODE
2009 - FLORIDA ADMINISTRATIVE CODE, CHAPTER 39-44
2008 - FLORIDA ADMINISTRATIVE CODE, CHAPTER 58
2009 - NFPA 221 STANDARD FOR FIRE WALLS AND FIRE BARRIERS
2004 - NFPA 241 STANDARD FOR SAFEGUARDING CONSTRUCTION ALTERATION AND DEMOLITION OPERATIONS
2006 - NFPA 251 STANDARD METHODS OF TESTS OF FIRE ENDURANCE OF BUILDING CONSTRUCTION MATERIALS
2006 - NFPA 255 STANDARD METHOD OF TEST OF SURFACE BURNING CHARACTERISTICS OF BUILDING MATERIALS

PRODUCT APPROVALS

Table with columns: MANUFACTURER, PRODUCT CATEGORY, APPROVAL NUMBER/SEC, PRODUCT MODEL OR NAME, SERIES, GLASS TYPE/SIZE, APPROVAL ENTITY, EXPIRATION DATE.

EXISTING BUILDING DATA: EXISTING SQUARE FOOTAGE = 22,502 SF
CODES: 2017 FLORIDA BUILDING CODE (6TH EDITION)
2017 FLORIDA BUILDING CODE EXISTING BUILDING (6TH EDITION)
OCCUPANCY CLASSIFICATION GROUP B (SECTION 305) BUSINESS
CONSTRUCTION TYPE GROUP B BUSINESS, TYPE IV UNPROTECTED UNSPRINKLERED ALTERATION LEVEL 1 - 2017 FLORIDA EXISTING CODE (6TH EDITION) CH. 5 SEC. 503, CH. 15 SEC. 1503/1508

WIND DATA: NOTE: VULT = 145 MPH WIND BORNE DEBRIS REGION RISK CAT. II EXP. C Gcpi = 0.0 FOR NEW CANOPY Gcpi = 0.18 FOR NEW STOREFRONT WINDOW SYSTEM

STATE OF FLORIDA BUILDING CODE 2017 EDITION-6TH EDITION BUILDING CODE ANALYSIS table with columns: DESCRIPTION, SECTION, REQUIRED, PROPOSED.

BARBEE TOWERS RENOVATION 1100 E DRUID ROAD CLEARWATER, FL 33716

ISSUED DATE: 05-15-20 05-15-20 CONSTRUCTION DOCUMENTS

REVISIONS table with columns: NO., DATE, DESCRIPTION.

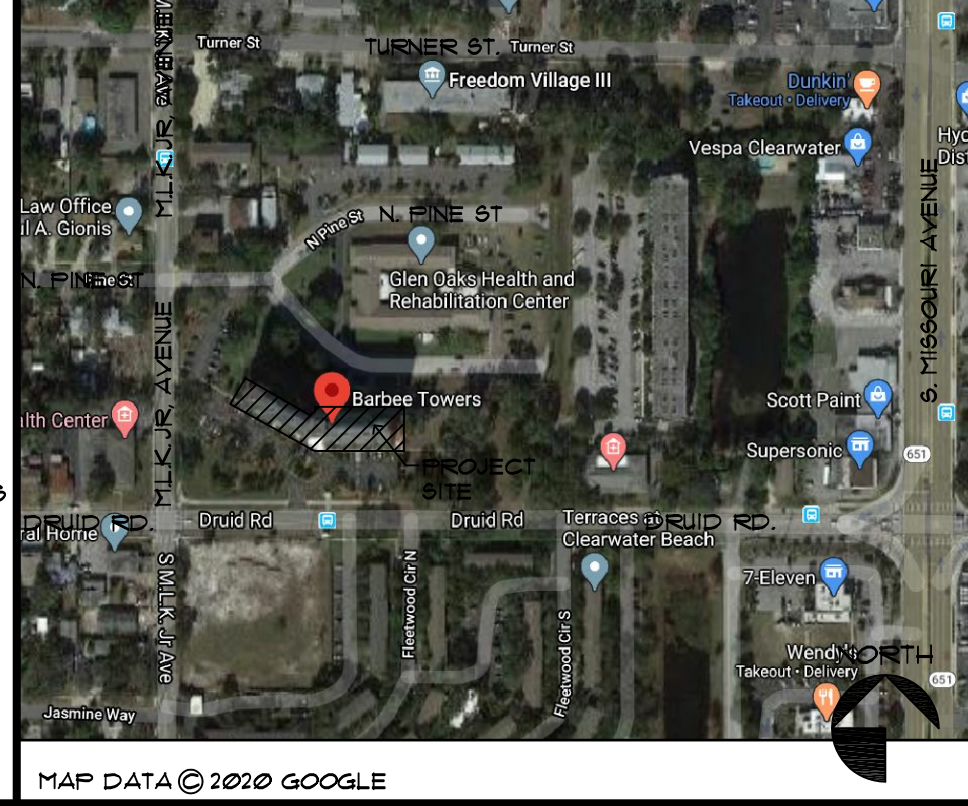
PROJECT NO.: 19079.00 DRAWN BY: BOG, MAC PROJECT MANAGER: RW CHECKED BY: KJB DATE: 05-15-20 SCALE: NOT TO SCALE

GENERAL INFORMATION

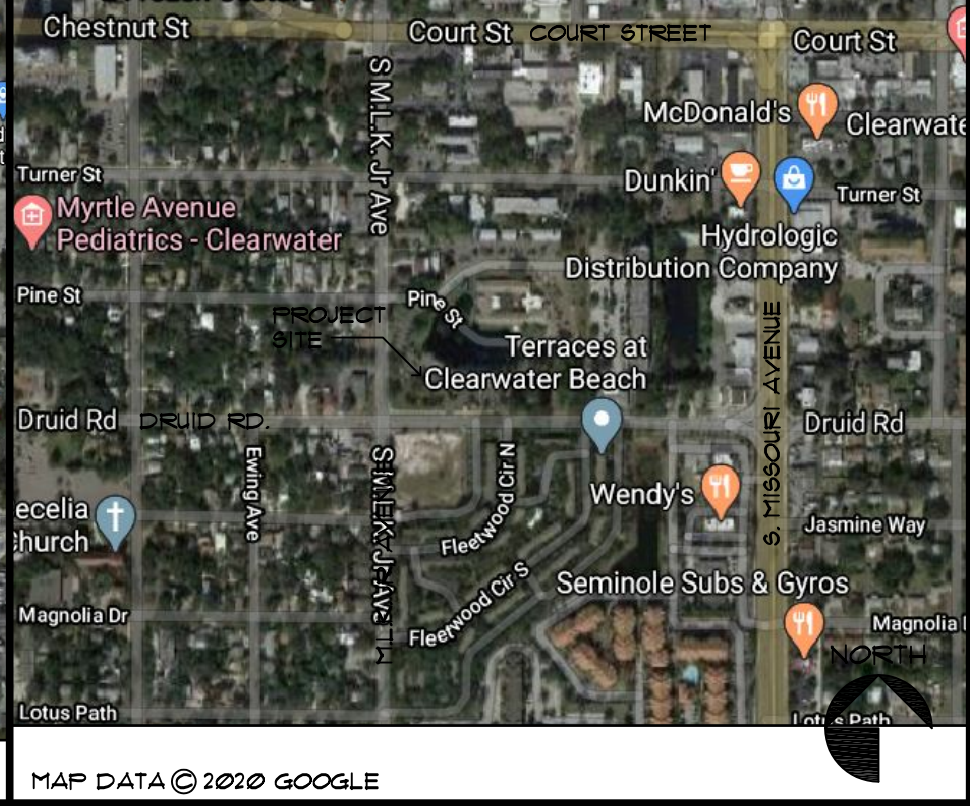
LEGENDS

MATERIAL LEGEND and SYMBOL LEGEND showing patterns for wood, insulation, tile, and structural materials, along with symbols for section numbers, elevations, and details.

VICINITY MAP



LOCATION MAP



MAP DATA © 2020 GOOGLE

**GENERAL DEMOLITION NOTES**

GENERAL CONTRACTOR (GC) SHALL DO ALL REMOVAL/DEMOLITION AS INDICATED ON THE DRAWINGS AND/OR REQUIRED TO INSTALL THE NEW WORK AS INDICATED ON THE CONSTRUCTION DRAWINGS, INCLUDING BUT NOT LIMITED TO THE FOLLOWING:

- GC SHALL VISIT THE SITE PRIOR TO BID AND FAMILIARIZE HIMSELF WITH THE SCOPE OF REMOVAL WORK PRIOR TO BID.
- DRAWINGS SHOW ONLY MAJOR SCOPE OF REMOVAL AND GENERAL APPROXIMATION OF PARTITIONS AND ANY OTHER EXISTING ITEMS, I.E. PIPES, DUCTS, OUTLETS, ETC. TO BE REMOVED. CONTRACTORS ARE REQUIRED TO REMOVE ALL EXISTING PARTITIONS, PIPES, OUTLETS, DEVICES AND RELATED ITEMS NOT SHOWN, AS REQUIRED TO SUIT ALL NEW WORK.
- EXISTING MECHANICAL AND ELECTRICAL EQUIPMENT, FIXTURES, RISERS, SHAFTS, PIPES, OUTLETS, DEVICES, ETC. SHOWN ON DRAWINGS ARE APPROXIMATELY LOCATED. CONTRACTORS ARE TO DETERMINE EXACT LOCATIONS OF ALL ITEMS IN THE FIELD. SUCH ITEMS THAT ARE DETERMINED TO BE INACTIVE OR THAT ARE NO LONGER REQUIRED DUE TO NEW WORK SHALL BE REMOVED. VERIFY WITH THE ARCHITECT.
- ALL EXISTING ITEMS LISTED IN NOTE ABOVE WHICH ARE TO REMAIN SHALL BE PROVIDED WITH NEW GYPSUM WALLBOARD ENCLOSURES BY THE CONSTRUCTION CONTRACTOR. LOCATIONS SHOWN ARE APPROXIMATE. ALL PIPES AND DUCTS SHALL BE ENCLOSED IN ALL SPACES BY DRYWALL CONSTRUCTION AND HUNG CEILING EXCEPT SHAFTS WHICH SHALL BE EXTENDED TO UNDERSIDE OF STRUCTURE. CONTRACTORS ARE TO NOTIFY ARCHITECT OF EXISTING LOCATIONS FOR POSSIBLE DIMENSIONAL ADJUSTMENTS. CONSTRUCTION CONTRACTOR TO REFER TO MECHANICAL AND ELECTRICAL DRAWINGS.
- ALL SURFACES DISTURBED BY REMOVALS SHALL BE PATCHED TO MATCH EXISTING ADJACENT FINISHES. TYPICAL THROUGHOUT FOR WALLS, CEILING AND FLOORS.
- PATCH EXISTING LOOSE AND DAMAGED FIREPROOFING AT BEAMS AND COLUMNS AS REQUIRED.
- GC SHALL CHECK AND VERIFY ALL CONDITIONS AFFECTING THE DEMOLITION AND NEW WORK AND NOTIFY THE ARCHITECT OF ANY DISCREPANCIES ON THE PLANS WHICH WOULD AFFECT THE WORK.
- GC SHALL MAINTAIN A SECURE BUILDING. THE AREAS OF THE BUILDING MUST BE LOCKED AND MADE SECURE DURING NON-CONSTRUCTION HOURS.
- GC SHALL PROVIDE, ERECT AND MAINTAIN TEMPORARY BARRIERS AT INVOLVED WORK AREAS TO SATISFY THE FACILITY.
- GC SHALL PROTECT EXISTING MATERIALS AND FINISHES WHICH ARE NOT TO BE DEMOLISHED.
- GC TO PROVIDE APPROPRIATE TEMPORARY SIGNAGE INCLUDING SIGNAGE FOR EXIT OR BUILDING EGRESS.
- GC SHALL REMOVE/DEMOLISH THE FOLLOWING ITEMS (AS INDICATED WITH DASHED LINES) INCLUDING THE REMOVAL OF ALL LIGHTING, GRID, SUSPENDED ACCOUSTICAL CEILING TILES, HANGERS, STRAPS, WIRES AND ALL OTHER EXPOSED CEILING FINISHES AND TIES ATTACHED OR SUSPENDED FROM STRUCTURE ABOVE.
- REMOVE EXISTING FLOOR FINISHES, EXCEPT VCT, IN AREAS OF DEMOLITION (AND IN AREAS INDICATED TO RECEIVE NEW FINISHES AS PER FINISH SCHEDULE). PATCH ANY OPEN OR CRACKED FLOOR AREAS WITH FLASH PATCHING. CREATE A SMOOTH FLUSH CONDITION TO RECEIVE NEW FLOOR FINISHES.
- WHERE PARTITIONS ARE INDICATED TO BE REMOVED, REMOVE ALL TRIM, DOORS, FRAMES, WALL, OUTLETS, SWITCHES, SURFACE MOUNTED FIXTURES, AND WIRING BACK TO DISTRIBUTION PANEL.
- GC SHALL BE RESPONSIBLE FOR OBTAINING ALL REQUIRED PERMITS AND PAYING ALL FEES AS PART OF THE WORK REQUIRED FOR THIS PROJECT (IF REQUIRED - VERIFY).
- ALL DEMOLITION DEBRIS SHALL BE REMOVED AT LEAST ONCE PER DAY TO MAINTAIN SAFE WORKING CONDITIONS. VERIFY METHOD AND LOCATION OF DUMPSTERS WITH ARCHITECT PRIOR TO BEGINNING WORK.
- PROVIDE TEMPORARY LIGHTING AND ELECTRICAL SERVICE IN THE WORK AREA AS REQUIRED TO COMPLETE THE WORK.

**WALL LEGEND**

- DEMOLISHED WALL
- EXISTING WALL
- XXXXX EXISTING CMU WALL
- ..... EXISTING CONCRETE WALL
- /— EXISTING DOOR TO REMAIN
- - - - EXISTING DOOR TO BE REMOVED

**ISSUED**  
 DATE: 10/05/20  
 FOR: CONSTRUCTION DOCUMENTS

REVISIONS	
NO.	DESCRIPTION

PROJECT NO.: 19079.00  
 DRAWN BY: BRG  
 PROJECT MANAGER: RW  
 CHECKED BY: KJB  
 DATE: 05-29-20  
 SCALE: 1/8" = 1'-0"

**AD101**  
 OVERALL DEMOLITION PLAN

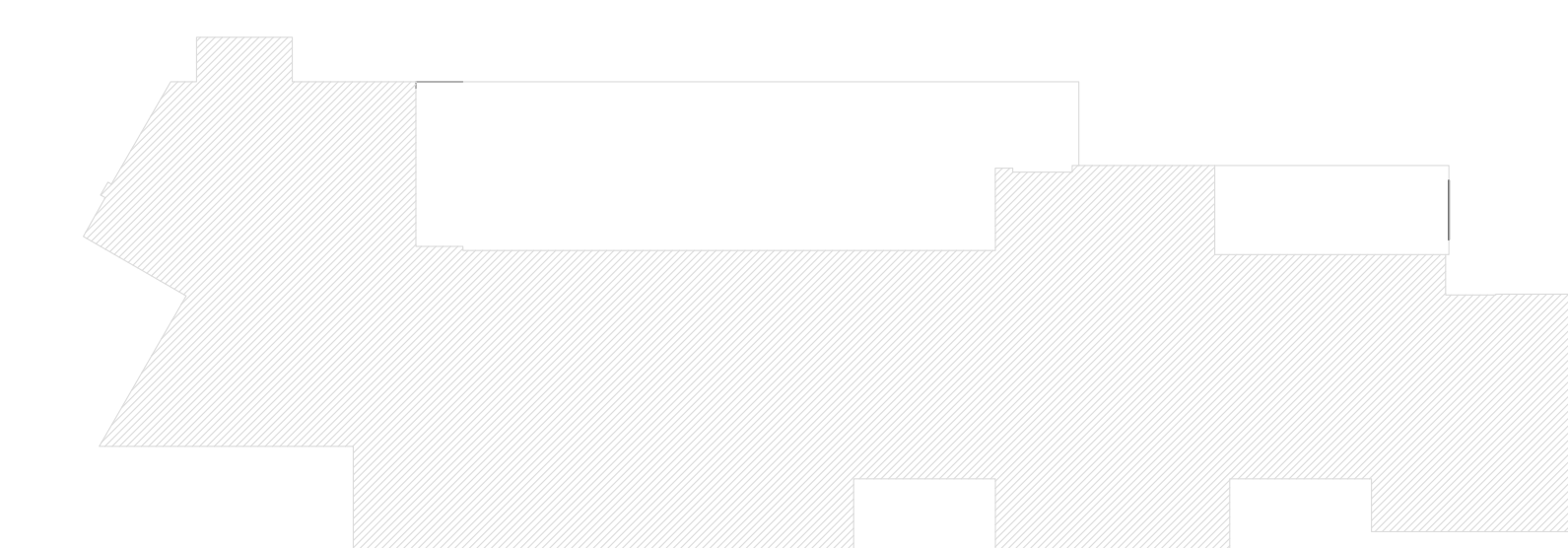
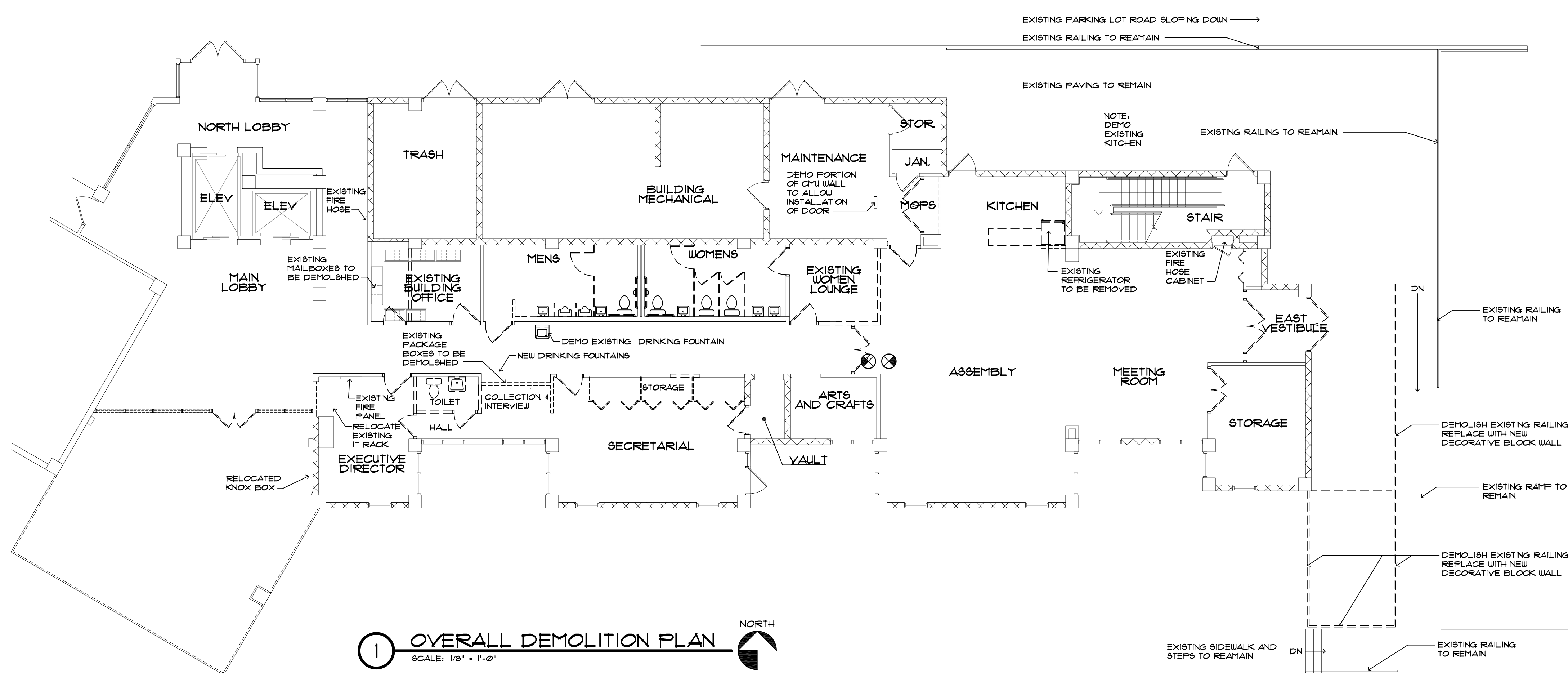
**BESSOLO**  
 DESIGN GROUP, INC.  
 ARCHITECTURE ■ DEVELOPMENT  
 License #AA-C002117  
 7901 4TH ST. NORTH, SUITE 200  
 ST. PETERSBURG, FL 33702  
 727 894-4453 www.bessolo.com

PROFESSIONAL SEAL

KEVIN J. BESSOLO  
 ART 12069

COPYRIGHT BESSOLO DESIGN GROUP, INC.  
 THIS DRAWING AND ALL INFORMATION CONTAINED HEREIN IS THE PROPERTY OF BESSOLO DESIGN GROUP, INC. NO PART OF THIS DRAWING OR INFORMATION CONTAINED HEREIN SHALL BE REPRODUCED OR TRANSMITTED IN ANY FORM OR BY ANY MEANS, ELECTRONIC OR MECHANICAL, INCLUDING PHOTOCOPYING, RECORDING, OR BY ANY INFORMATION STORAGE AND RETRIEVAL SYSTEM, WITHOUT THE EXPRESS WRITTEN CONSENT OF BESSOLO DESIGN GROUP, INC. ALL CHANGES ARE REGULATORY AND NOT FOR CONSTRUCTION PURPOSES UNLESS SPECIFICALLY NOTED BY KEVIN J. BESSOLO.

**BARBEE TOWERS RENOVATION**  
 1100 E DRUID ROAD  
 CLEARWATER, FL 33756



**LIMITS OF CONSTRUCTION KEY PLAN**

Note: SHADED AREAS ARE WITHIN THE SCOPE

**GENERAL REFLECTED CEILING NOTES**

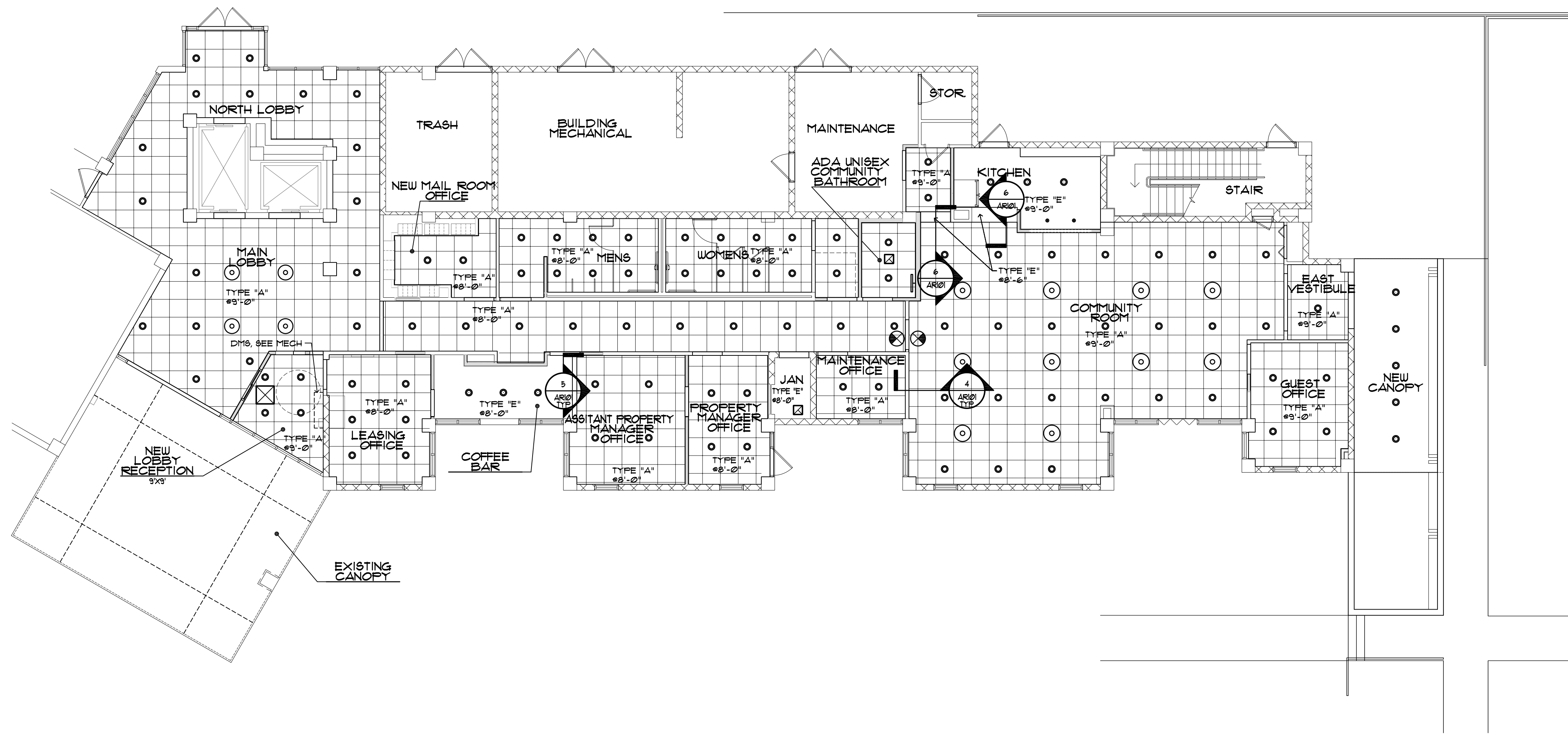
- FOR ABBREVIATIONS, LEGENDS, & SYMBOLS NOT SHOWN, SEE DRAWING 0002.
- THE CONTRACTOR SHALL CAREFULLY STUDY AND COMPARE THIS REFLECTED CEILING PLAN WITH THE ELECTRICAL LIGHTING PLANS, MECHANICAL SUPPLY & RETURN AND EXHAUST PLANS, AND THE FIRE PROTECTION PLANS. HE WILL REPORT TO THE ARCHITECT ANY ERRORS, INCONSISTENCY OR OMISSIONS THAT HE MAY DISCOVER.
- ONLY CEILING MOUNTED EXIT SIGNS ARE SHOWN ON THE REFLECTED CEILING PLANS. REFER TO THE ELECTRICAL DRAWINGS FOR LOCATION OF WALL MOUNTED EXIT SIGNS.
- THE CONTRACTOR SHALL VERIFY THAT ACCESS PANELS OF APPROPRIATE SIZE AND TYPE ARE INSTALLED IN GYPSUM WALLBOARD CEILING SOFFITS, IN CEMENT PLASTER CEILINGS OR SOFFITS, AND IN OTHER NON-ACCESSIBLE TYPE CEILINGS OR SOFFITS WHERE ACCESS SERVICE OR ADJUSTMENT TO MECHANICAL, PLUMBING OR ELECTRICAL ITEMS MAY BE REQUIRED. ACCESS PANELS SHALL BE THE FIRE RATED TYPE EQUAL TO THE RATING OF THE CEILING OR SOFFIT IN WHICH THEY OCCUR.
- COORDINATE ELECTRICAL DRAWINGS AND/OR THE COMMUNICATIONS DRAWINGS FOR LOCATIONS OF CEILING MOUNTED SMOKE DETECTORS, SPEAKERS, FIRE ALARM DEVICES, ETC.
- THE CONTRACTOR WILL ADVISE THE OWNER AND TENANTS THAT AN 18" MINIMUM VERTICAL CLEARANCE SHALL BE MAINTAINED BETWEEN THE BOTTOM OF THE EXTENDED SPRINKLER HEADS AND THE TOP OF ANY FILES, SHELVING, LOCKERS, ETC. THE CONTRACTOR WILL ALSO ADVISE THE OWNER AND TENANTS THAT ITEMS SHALL NOT BE PLACED OR STORED ON TOP OF SUCH SHELVING SO THAT THIS CODE REQUIRED 18" MINIMUM VERTICAL CLEARANCE WILL BE MAINTAINED.
- THE CONTRACTOR SHALL PROVIDE ACCESS PANELS IN GYPSUM WALLBOARD CEILINGS SO THAT THE ARCHITECT AND THE STATE AND LOCAL OFFICIALS CAN INSPECT RATED WALLS. ARCHITECT SHALL BE PROVIDED A LAYOUT FOR APPROVAL PRIOR TO INSTALLATION. THESE ACCESS PANELS WILL BE LOCATED AT INTERVALS NOT TO EXCEED 30'-0" ON CENTER MINIMUM OF ONE PER SPACE, AND IN SUCH MULTIPLE LOCATIONS AS NECESSARY TO VIEW ALL SURFACES OF THE RATED WALLS.
- ALL SMOKE DETECTORS SHALL BE MINIMUM OF 3'-0" FROM ANY HVAC DIFFUSERS.
- ALL CEILING HEIGHTS 8'-0" AFF UNLESS OTHERWISE NOTED.
- REFER TO FIRE PROTECTION DRAWINGS FOR DETAILED INFORMATION RELATING TO SPRINKLER HEAD LOCATIONS.
- FOR RESIDENT ROOM LIGHTING SEE ENLARGED RESIDENT REFLECTED CEILING PLANS ON SHEET AR401-AR405.
- FOR DESCRIPTION OF ALL LUMINAIRES IDENTIFIED ON THIS DRAWING, SEE LUMINAIRE SCHEDULE ON ELECTRICAL DRAWINGS.
- ACOUSTICAL PANEL CEILING SHALL BE CENTERED IN ROOM OR SPACE UNLESS OTHERWISE NOTED.
- ALL LUMINAIRES, SPEAKERS, GRILLES, ETC. SHALL BE CENTERED IN CEILING PANELS UNLESS OTHERWISE NOTED.
- ALL LUMINAIRES/FIXTURES IN GYPSUM CEILINGS TO BE DIMENSIONED:
  - CENTER OF LUMINAIRE/FIXTURE TO CENTER OF LUMINAIRE/FIXTURE
  - FACE OF GYPSUM BOARD TO FACE OF GYPSUM BOARD
  - FACE OF GYPSUM BOARD TO CENTER OF LUMINAIRE/FIXTURE
  - FACE OF GYPSUM BOARD TO CENTER OF ACCESS PANEL
  - CENTER OF ACCESS PANEL TO CENTER OF LUMINAIRE/FIXTURE
- FOR CEILING FINISHES - SEE ID001 AND ID602. CEILING FINISH TAG: C-10

**REFLECTED CEILING TYPES IN PLAN**

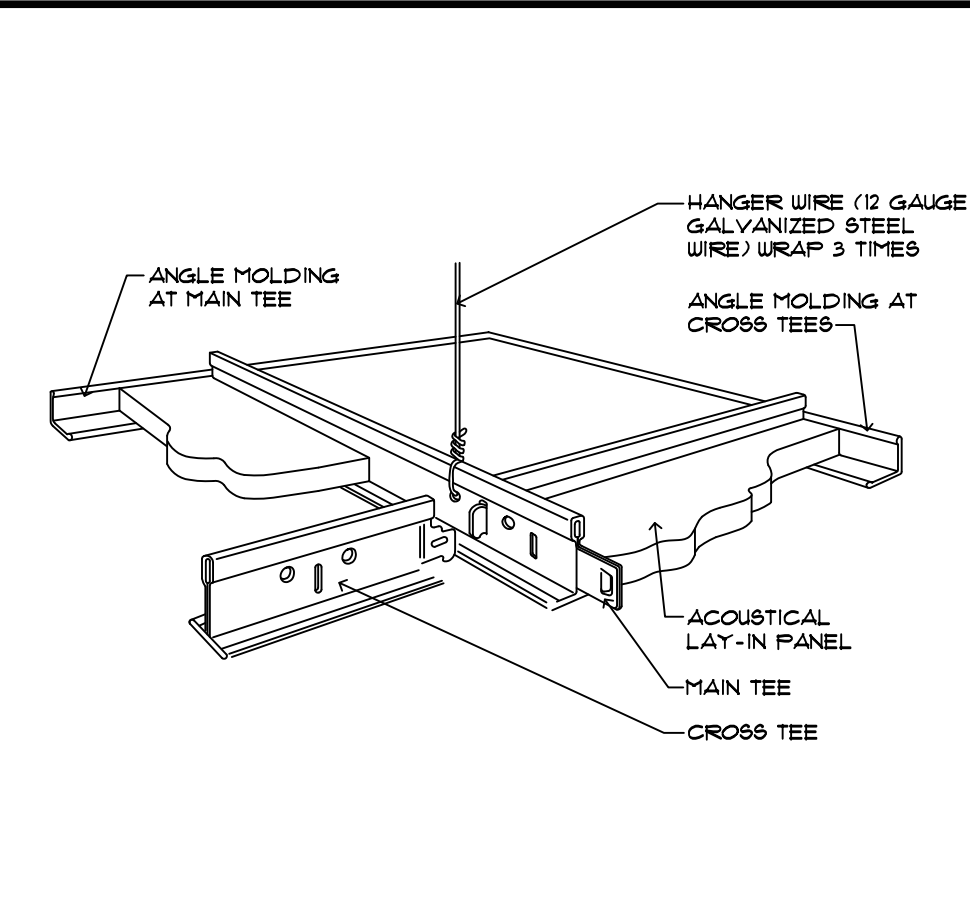
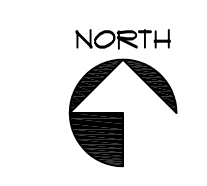
TYPE 'A' ACOUSTICAL CEILING PANELS - 2' x 2'		TYPE 'F' EXPOSED STRUCTURE/ RATED MEMBRANE - PAINTED	
TYPE 'B' ACOUSTICAL CEILING PANELS 2' x 4' SCORED FOR 2' x 2' PATTERN		TYPE 'G' FIBER CEMENT - PAINTED	
TYPE 'C' ACOUSTICAL CEILING PANELS - 2' x 4'		TYPE 'H' FIBER CEMENT - STAINED	
TYPE 'D' ACOUSTICAL CEILING PANEL - 2' x 4' WASHABLE		TYPE 'J' STUCCO - PAINTED	
TYPE 'E' GYPSUM BOARD CEILING - PAINTED		TYPE 'K' FAUX WOOD VENEER	

**REFLECTED CEILING PLAN SYMBOLS**

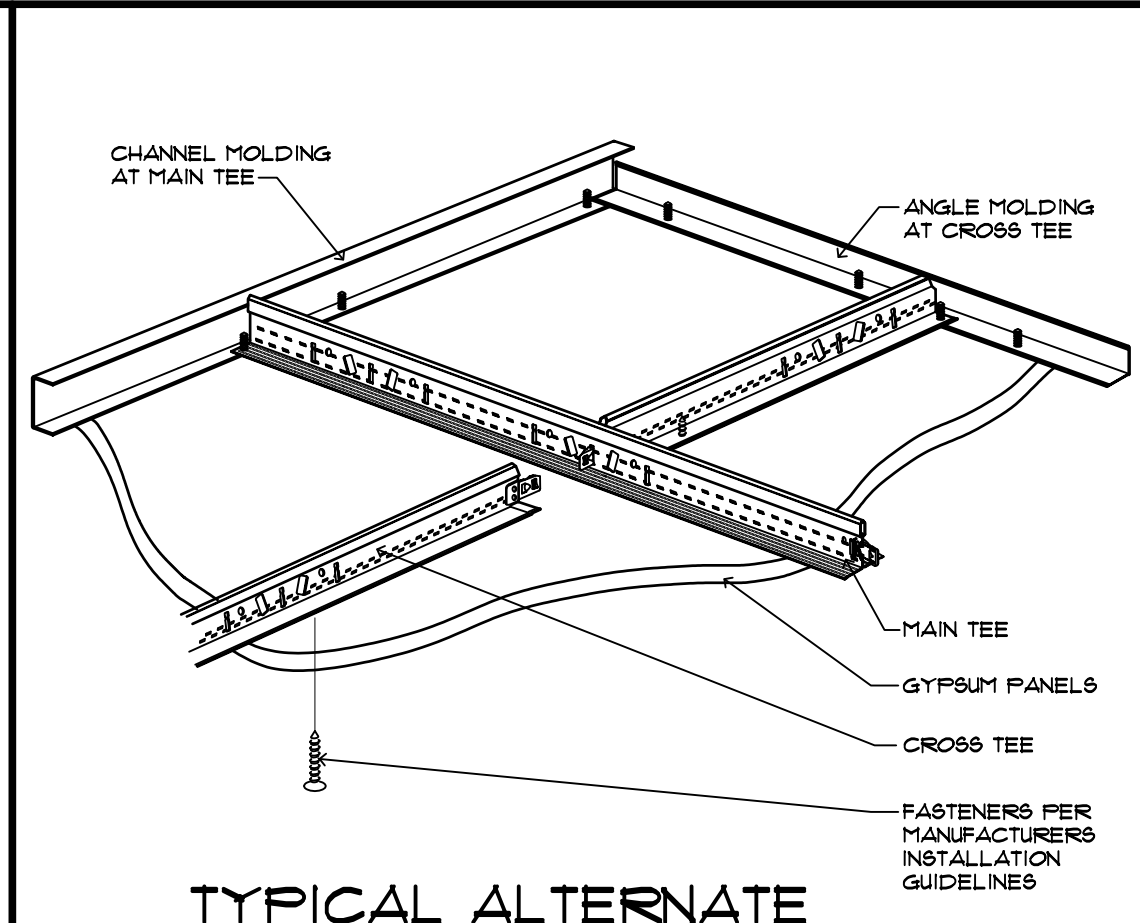
	SURFACE MOUNTED LUMINAIRE		AIR RETURN
	RECESSED DOWN LIGHT LUMINAIRE		AIR SUPPLY
	PENDANT LUMINAIRE		LINEAR SIDE WALL DIFFUSER
	WALL MOUNTED LUMINAIRE		SMOKE DETECTOR
	WALL MOUNTED ACCENT LUMINAIRE		WALL MOUNTED EXIT SIGN
	2'x4' RECESSED LUMINAIRE		CEILING MOUNTED EXIT SIGN
	2'x4' RECESSED LUMINAIRE - BASKET		HEAT LAMP
	2'x2' RECESSED LUMINAIRE		CEILING FAN
	4' FLUORESCENT STRIP LUMINAIRE		SIDEWALL SPRINKLER HEAD
	4' WALL MOUNTED FLUORESCENT STRIP LUMINAIRE		SPRINKLER HEAD
	4' WALL MOUNTED FLUORESCENT STRIP LUMINAIRE		
	18" x 18" ACCESS PANEL U.O.N.		



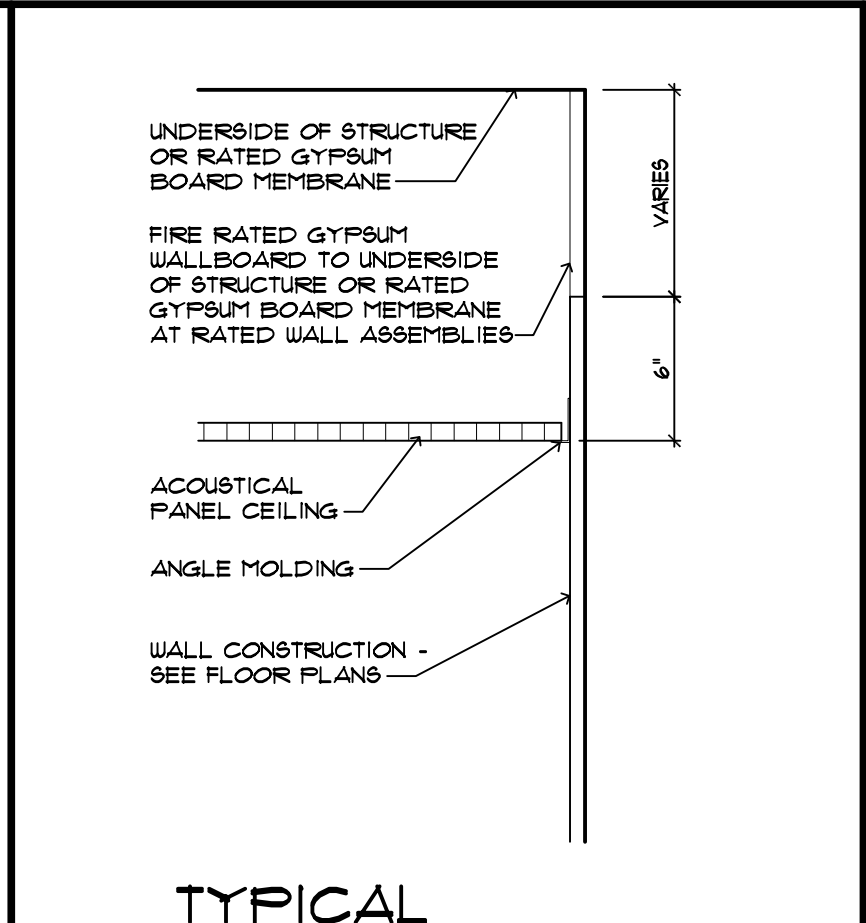
**1 REFLECTED CEILING PLAN**  
SCALE: 1/8" = 1'-0"



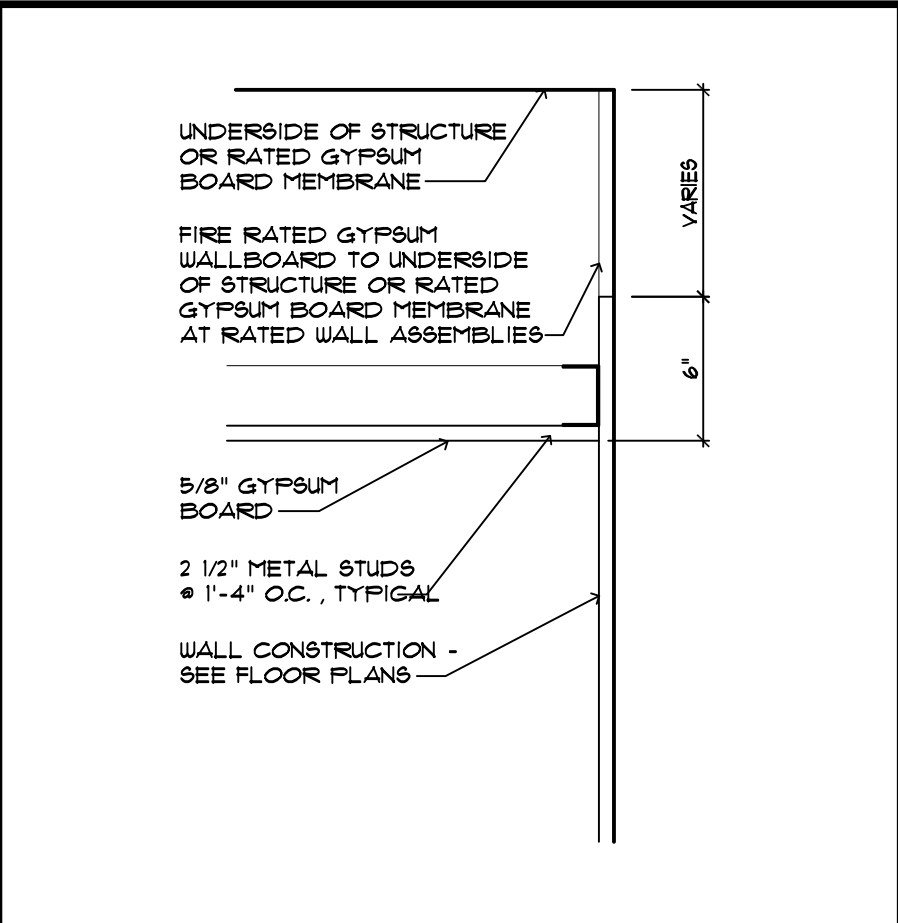
**2 TYPICAL SUSPENDED ACOUSTIC CEILING DETAIL**  
SCALE: NOT TO SCALE



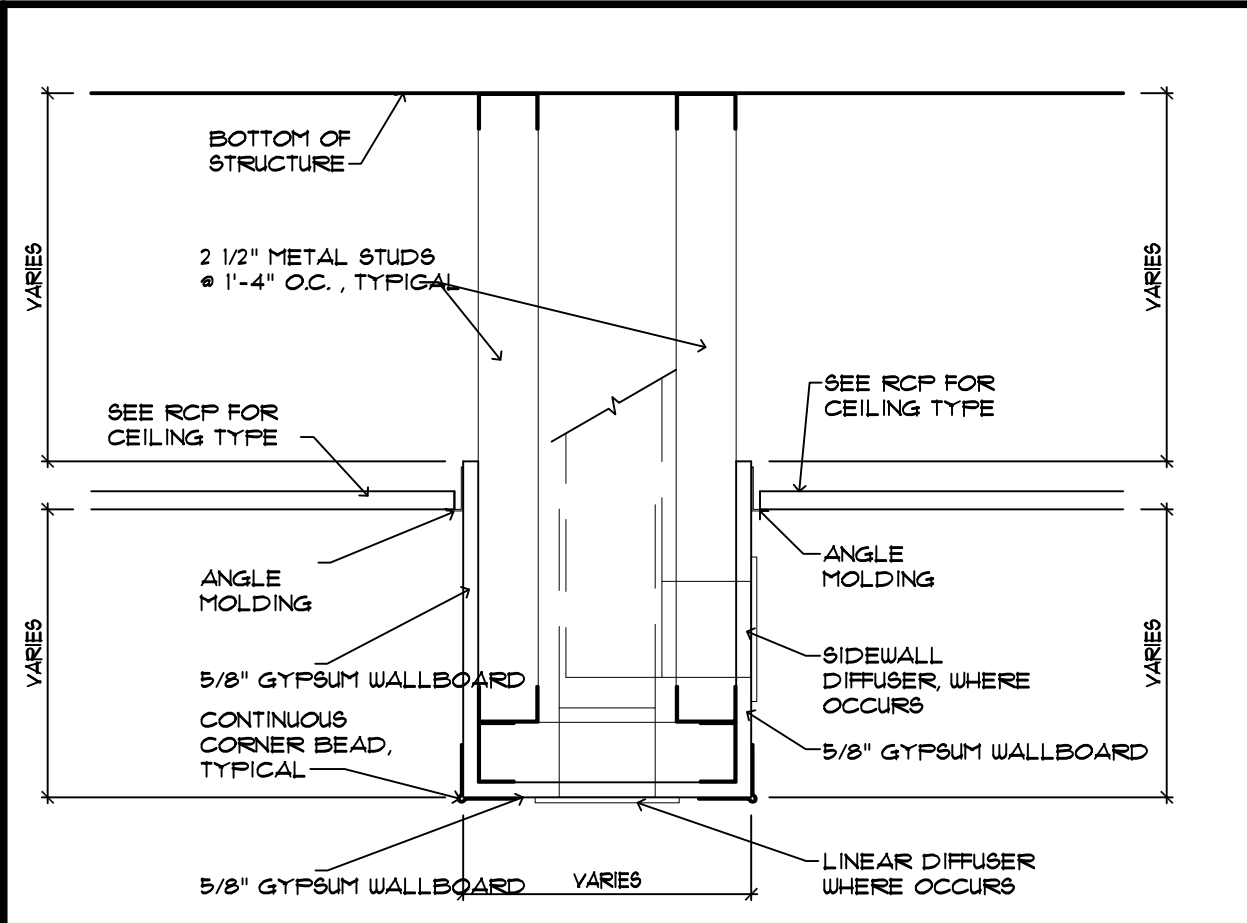
**3 TYPICAL ALTERNATE SUSPENDED GYPSUM BOARD CEILING DETAIL**  
SCALE: NOT TO SCALE



**4 TYPICAL ACOUSTICAL PANEL CEILING DETAIL**  
SCALE: 1/2" = 1'-0"



**5 TYPICAL GYPSUM BOARD CEILING DETAIL**  
SCALE: 1/2" = 1'-0"



**6 SOFFIT DETAIL**  
SCALE: 1/2" = 1'-0"

**BESSOLO**  
DESIGN GROUP, INC.  
ARCHITECTURE ■ DEVELOPMENT  
License #AA-C002117  
7901 4TH ST. NORTH, SUITE 200  
ST. PETERSBURG, FL 33702  
727 894-4453 www.bessolo.com

PROFESSIONAL SEAL  
  
KEVIN J. BESSOLO  
ART 12069  
Copyright © Bessolo Design Group, Inc. This drawing and all information contained hereon, including all related digital drawings or files, remain the property of Bessolo Design Group, Inc. No portion may be copied or used in any way without the express written consent of Bessolo Design Group, Inc. All rights reserved. All drawings are preliminary and not for construction purposes unless stated otherwise by Kevin J. Bessolo.

**BARBEE TOWERS RENOVATION**  
1100 E DRUID ROAD  
CLEARWATER, FL 33756

ISSUED  
DATE: 10/06/20  
09-15-20 CONSTRUCTION DOCUMENTS

REVISIONS	
NO.	DESCRIPTION

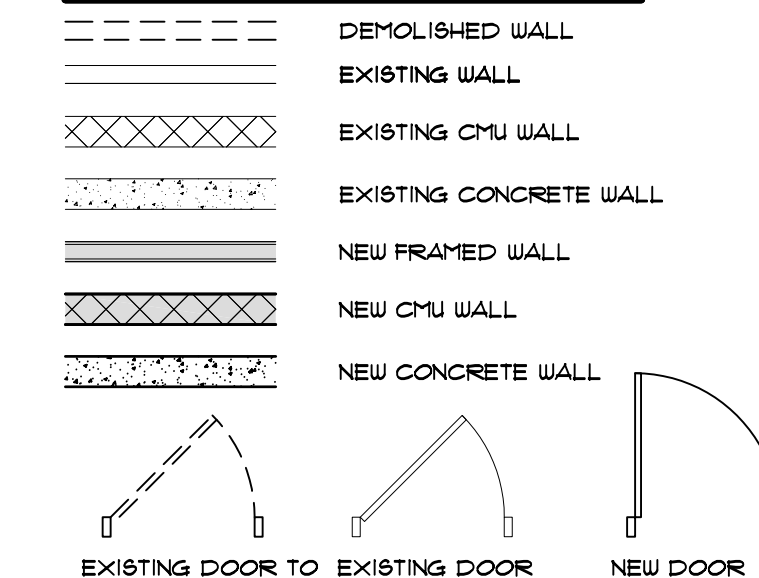
PROJECT NO.: 19079.00  
DRAWN BY: BRG/MAC  
PROJECT MANAGER: RW  
CHECKED BY: KJB  
DATE: 09-29-20  
SCALE: AS NOTED

**AR101**  
REFLECTED CEILING PLAN AND DETAILS

**GENERAL NOTES**

- FOR ABBREVIATIONS, LEGENDS & SYMBOLS SEE DRAWING G001.
- COORDINATE THIS DRAWING WITH STRUCTURAL, MECHANICAL, PLUMBING AND ELECTRICAL DRAWINGS.
- ALL DIMENSIONS ARE AS FOLLOWS:
  - FACE OF MASONRY TO FACE OF MASONRY
  - FACE OF MASONRY TO CENTER LINE OF COLUMN
  - CENTER LINE OF COLUMN TO CENTER LINE OF COLUMN
  - FACE OF MASONRY TO FACE OF METAL STUD
  - FACE OF METAL STUD TO FACE OF METAL STUD
- DIMENSIONS SHOWN ARE FOR LAYOUT OF EXTERIOR & INTERIOR CMU WALLS & OPENINGS AND ARE FOR ROOMS & UNIT DEMISING WALLS. FOR DIMENSIONS OF RESIDENT UNIT INTERIOR PARTITIONS SEE DRAWINGS A401-A409.
- SEE DRAWING A601 FOR DOOR SIZES.
- SEE DRAWING A701 FOR PARTITION DETAILS. ALL PARTITIONS ARE TYPE 1 UNLESS OTHERWISE NOTED.
- ALL MECHANICAL ROOMS TO HAVE 2 LAYERS OF 5/8" FIRECODE GYPSUM WALL BOARD WITH SOUND ATTENUATION INSULATION WITHIN FRAMING. SEE PARTITION TYPES.
- NEW MAIL-BOX UNITS, SALSBUURY INDUSTRIES (THROUGH MAILBOXES.COM) OR EQUAL SERIES 3600 BUILT-IN, FRONT LOAD, ALUMINUM FINISH. MAILBOXES:
  - TOTAL 156 BOXES.
  - 3 UNITS (#3635) @ 34 BOXES EACH.
  - 2 UNITS (#3628) @ 21 BOXES EACH.
  - TOTAL 9
- PARCEL LOCKERS:
  - 2 UNITS (CUSTOM) @ 4 LOCKERS (PL-3, 13" W X 16.25" H) EACH

**WALL LEGEND**



**WALL RATINGS**



**BESSOLO**  
DESIGN GROUP, INC.  
ARCHITECTURE & DEVELOPMENT  
License #AA-C002117  
7901 4TH ST. NORTH, SUITE 200  
ST. PETERSBURG, FL 33702  
727 894-4453 www.bessolo.com

PROFESSIONAL SEAL  
  
KEVIN J. BESSOLO  
ART 12069  
COPYRIGHT BESSOLO DESIGN GROUP, INC. THIS DRAWING AND ALL INFORMATION CONTAINED HEREIN IS THE PROPERTY OF BESSOLO DESIGN GROUP, INC. NO PART OF THIS DRAWING OR ANY INFORMATION CONTAINED HEREIN SHALL BE REPRODUCED OR TRANSMITTED IN ANY FORM OR BY ANY MEANS, ELECTRONIC OR MECHANICAL, INCLUDING PHOTOCOPYING, RECORDING, OR BY ANY INFORMATION STORAGE AND RETRIEVAL SYSTEM, WITHOUT THE EXPRESS WRITTEN CONSENT OF BESSOLO DESIGN GROUP, INC. ALL CHANGES ARE PRELIMINARY AND NOT FOR CONSTRUCTION PURPOSES UNLESS SHOWN AND RECALC BY KEVIN J. BESSOLO.

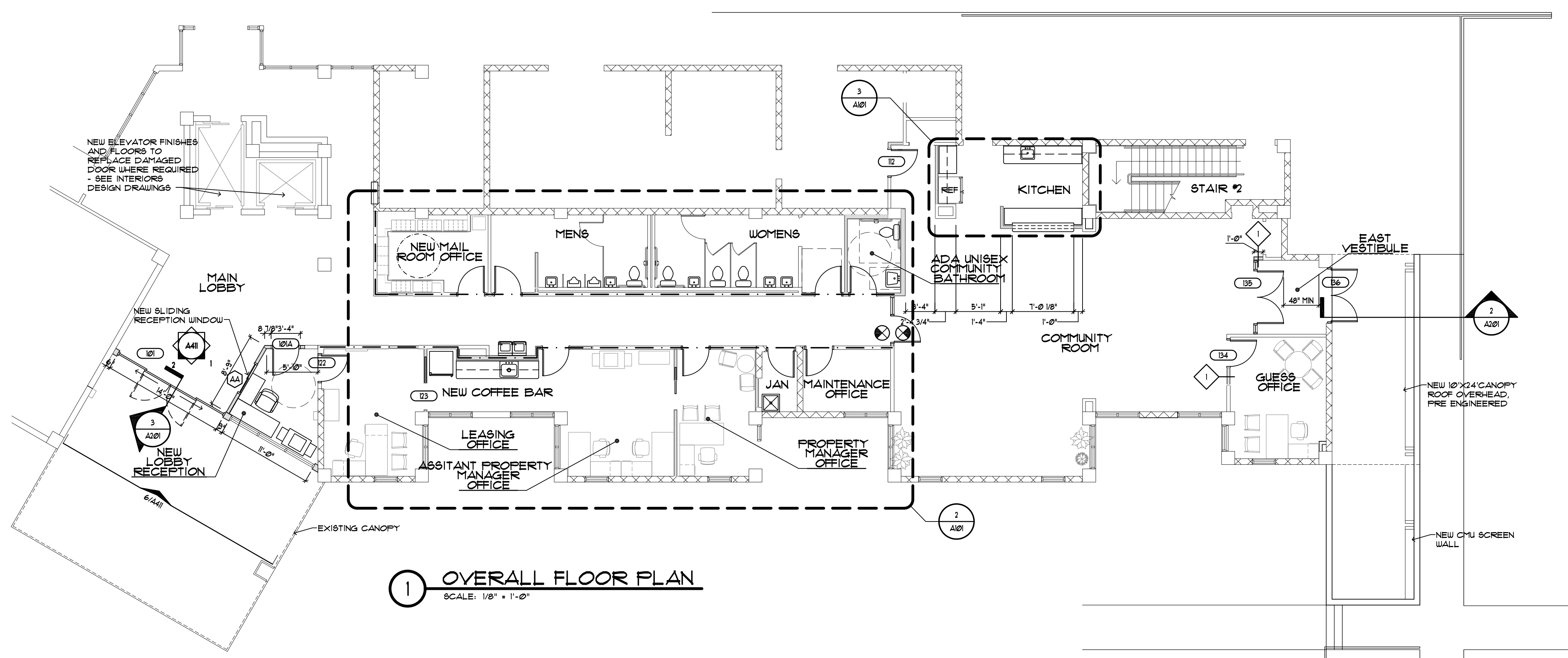
**BARBEE TOWERS**  
**RENOVATION**  
1100 E DRUID ROAD  
CLEARWATER, FL 33756

ISSUED  
DATE: 10/08/20  
05-15-20 CONSTRUCTION DOCUMENTS

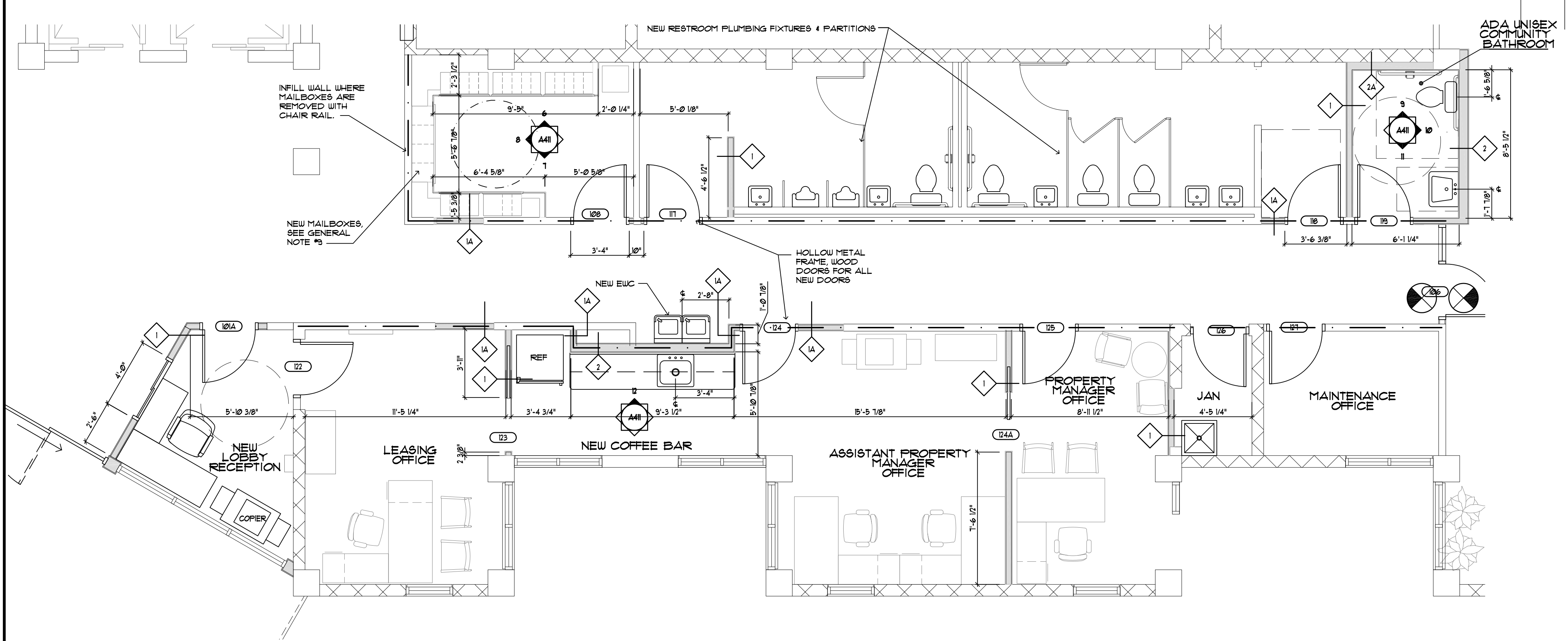
REVISIONS	
NO.	DESCRIPTION

PROJECT NO.: 19079.00  
DRAWN BY: MAC  
PROJECT MANAGER: RW  
CHECKED BY: KJB  
DATE: 05-15-20  
SCALE: AS NOTED

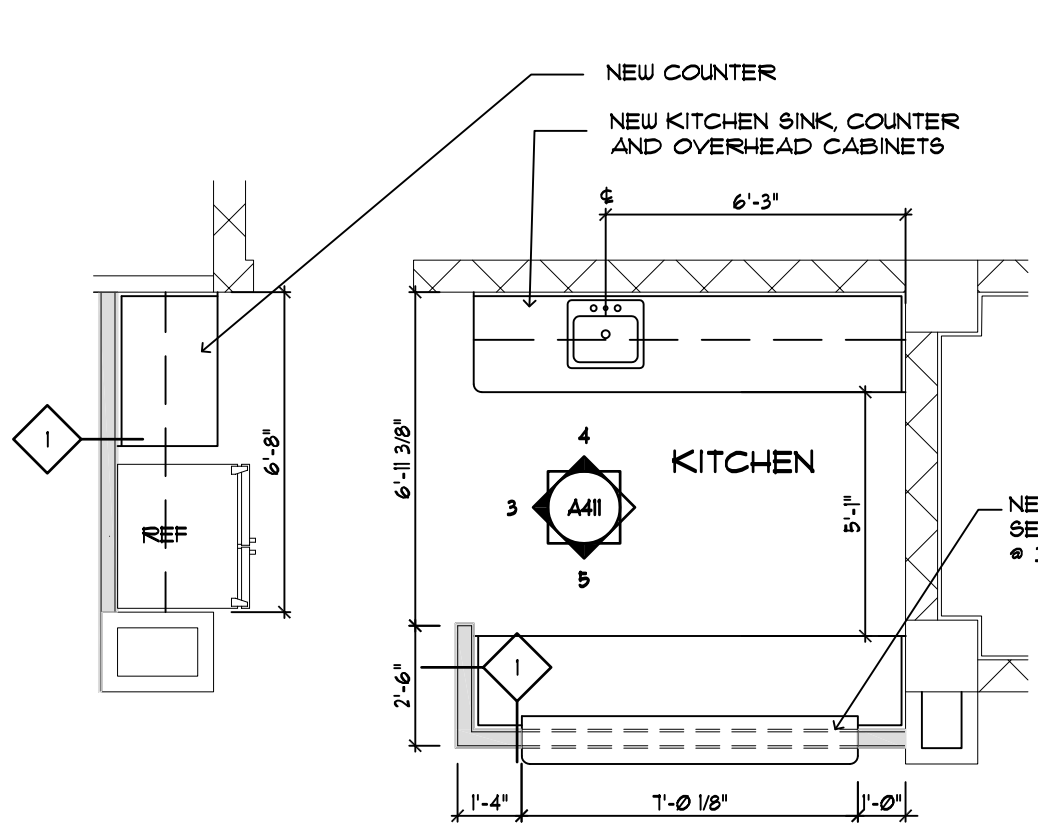
**A101**  
OVERALL AND DETAILED FLOOR PLANS



**1 OVERALL FLOOR PLAN**  
SCALE: 1/8" = 1'-0"



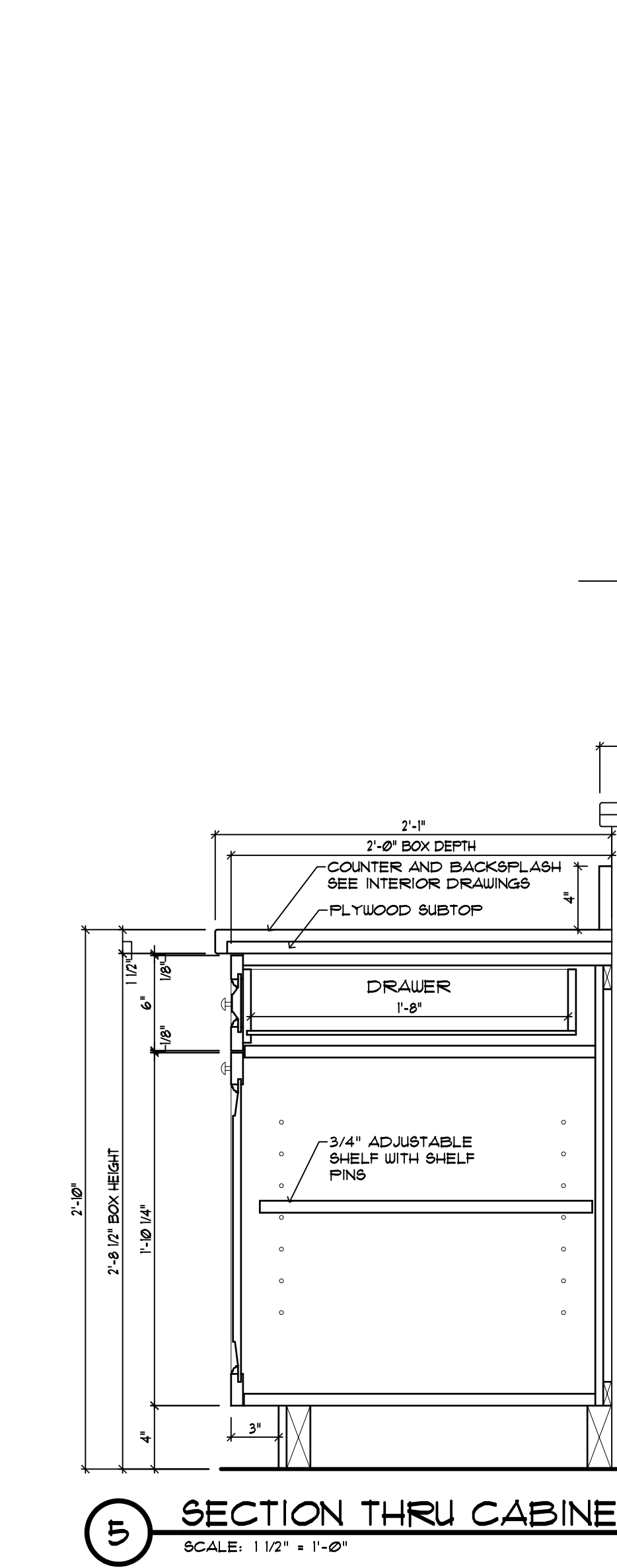
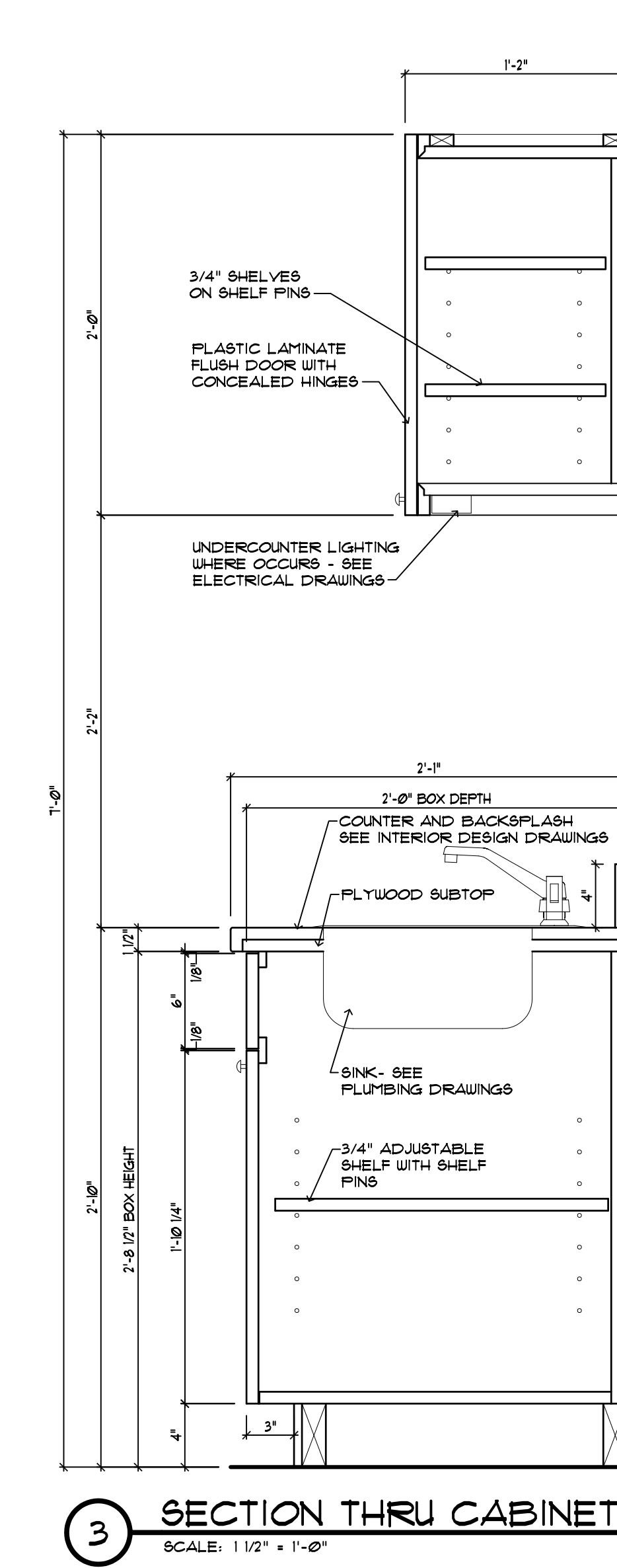
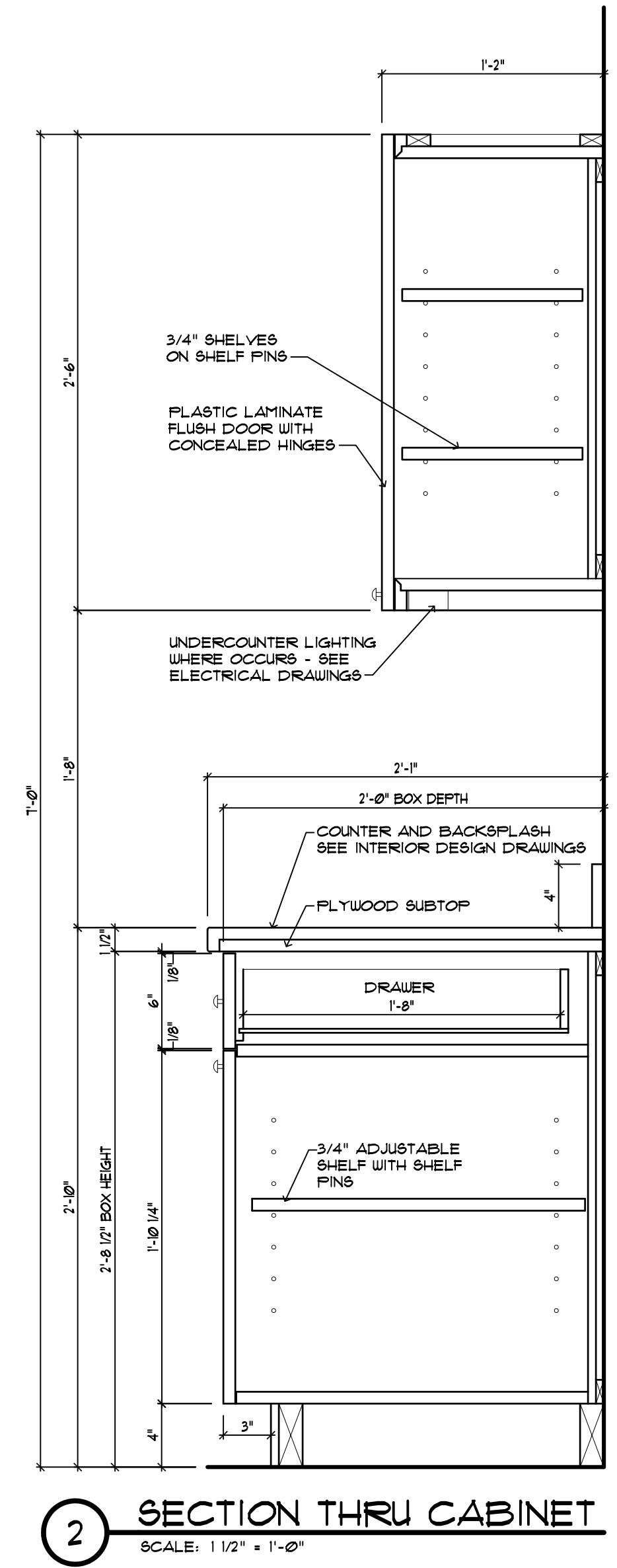
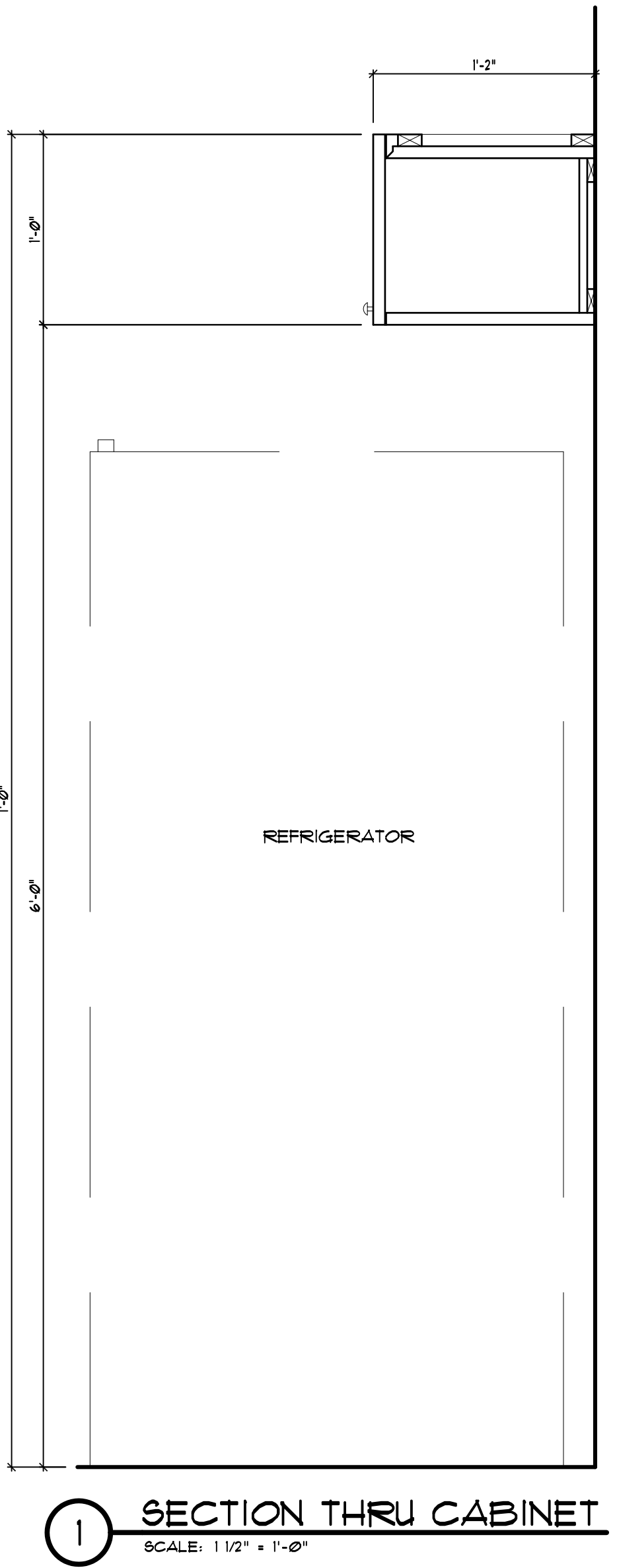
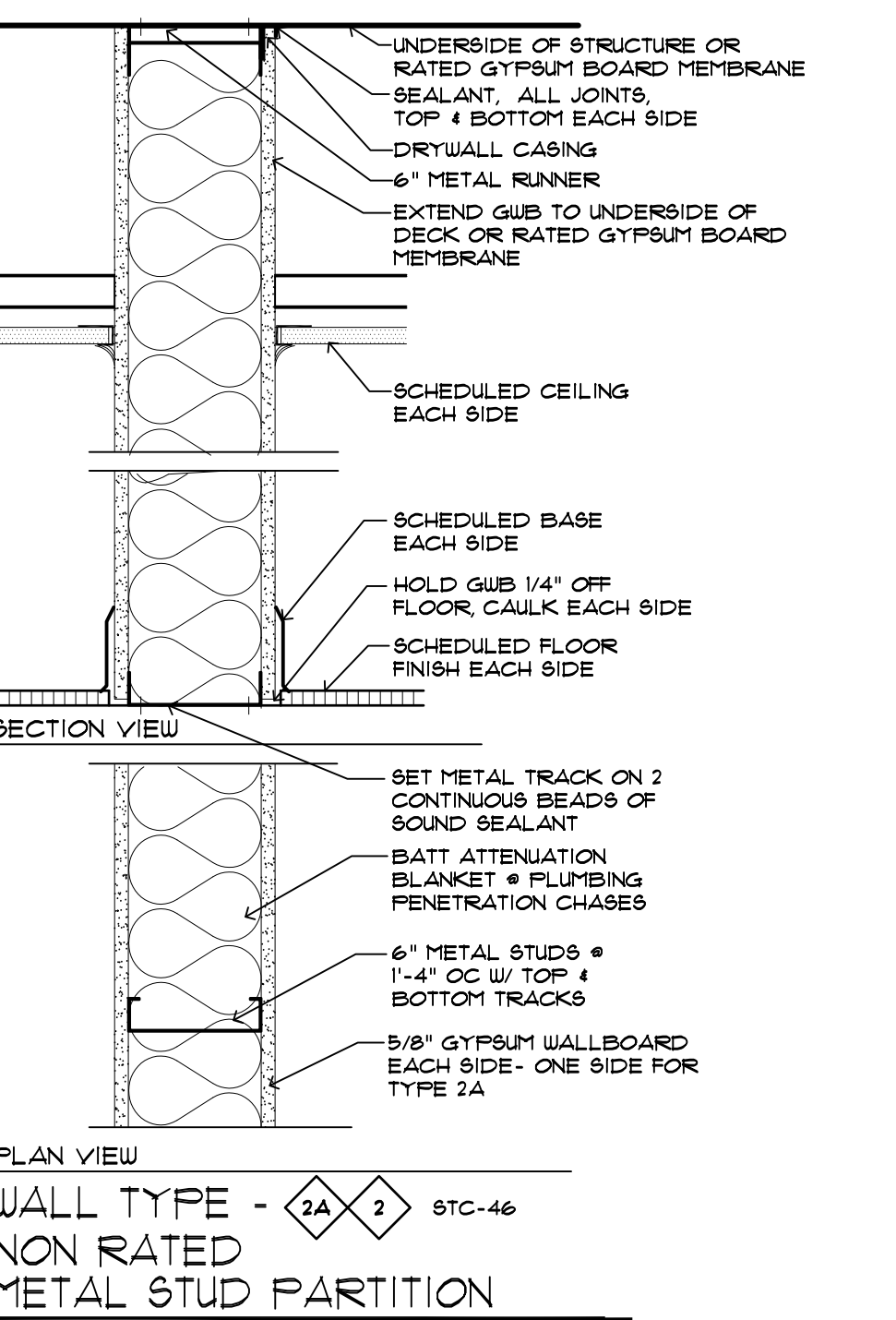
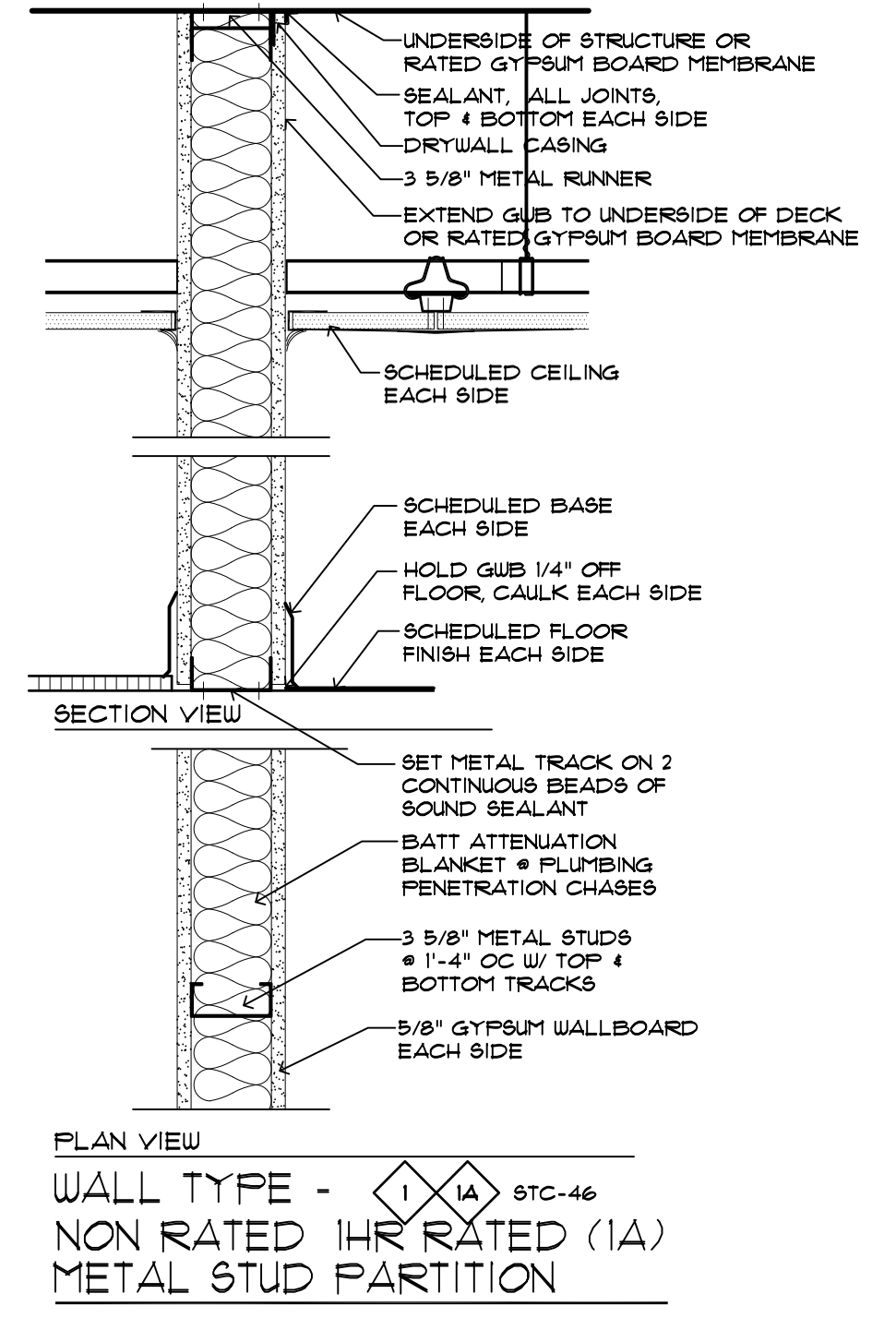
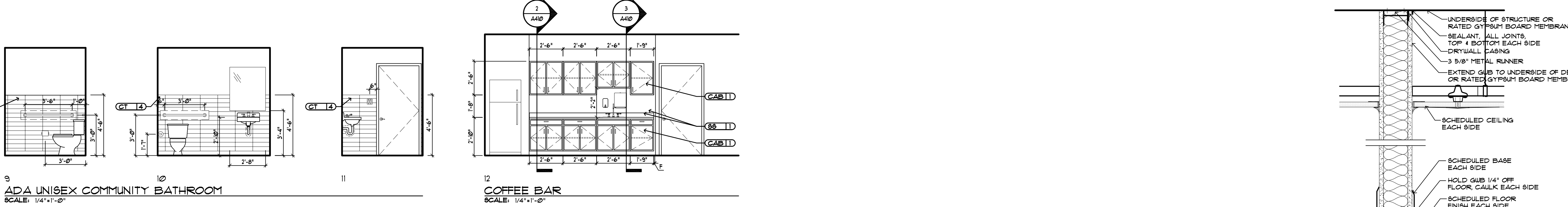
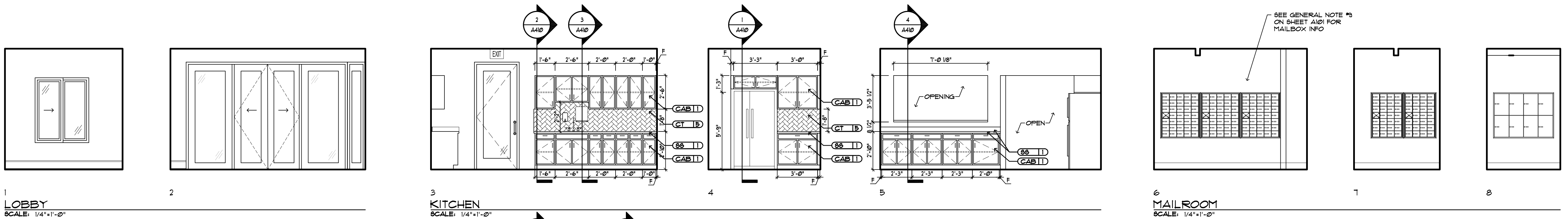
**2 DETAILED PLAN**  
SCALE: 1/4" = 1'-0"



**3 DETAILED PLAN**  
SCALE: 1/4" = 1'-0"



REVISIONS		
NO.	DATE	DESCRIPTION



1 SECTION THRU CABINET  
 SCALE: 1 1/2" = 1'-0"

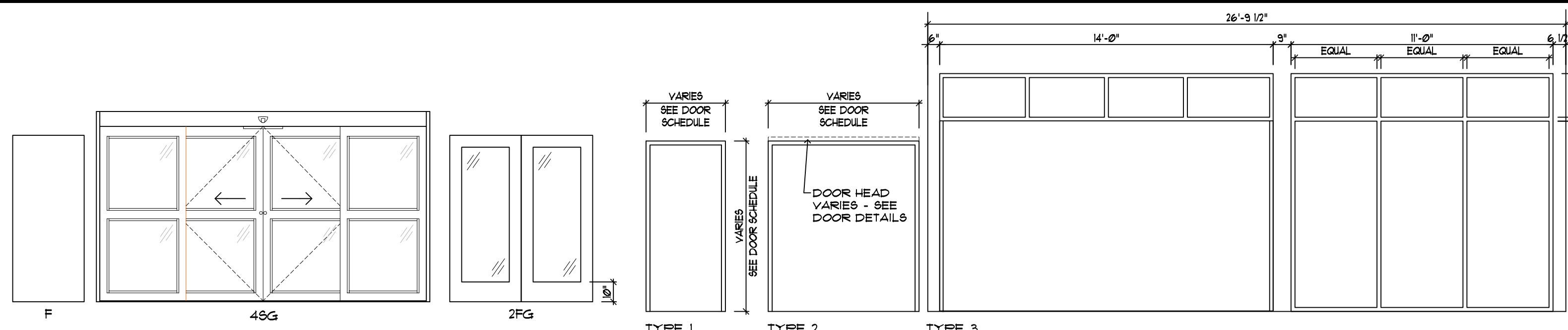
2 SECTION THRU CABINET  
 SCALE: 1 1/2" = 1'-0"

3 SECTION THRU CABINET  
 SCALE: 1 1/2" = 1'-0"

5 SECTION THRU CABINET  
 SCALE: 1 1/2" = 1'-0"

PLAN VIEW  
 WALL TYPE - 1A STC-46  
 NON RATED 1HR RATED (1A)  
 METAL STUD PARTITION

PLAN VIEW  
 WALL TYPE - 2A STC-46  
 NON RATED  
 METAL STUD PARTITION



**DOOR TYPES**

SCALE: NOT TO SCALE

**FRAME TYPES**

SCALE: NOT TO SCALE

**DOOR SCHEDULE**

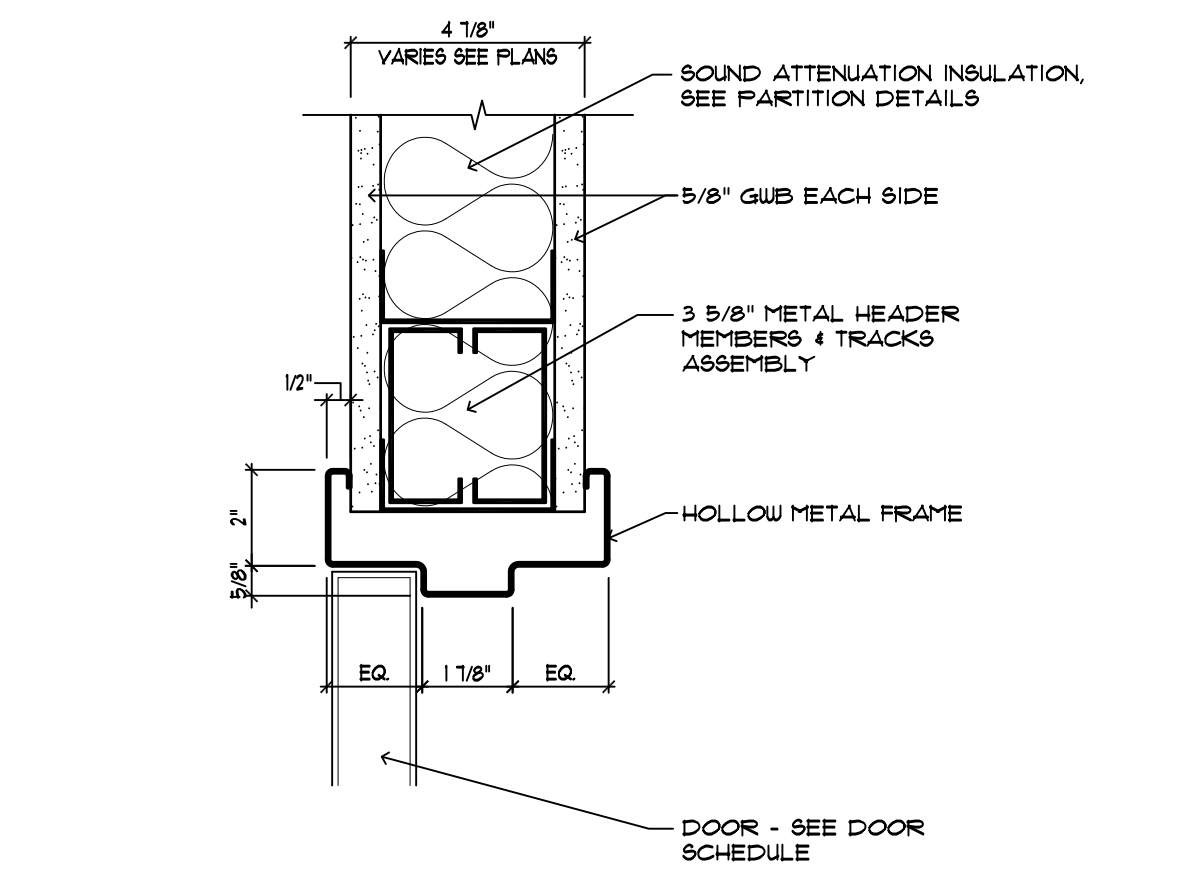
DOORS										FRAMES				REMARKS		
FLOOR LEVEL	DOOR NO.	SIZE	ROOM NAME	TQNS	TYPE	CONSTRUCTION	FIRE RATING	FACE/FINISH	LOUVER	TRANS.	UNDER CUT	TYPE	MATERIALS	DETAILS	HDW SET	
	101	(2) 3'-2" X 6'-8"	LOBBY	1 3/4"	4SG	ALUMINUM HOLLOW METAL		PAINTED						H2 J2 S2	XX	HARDWARE BY MFR
	101A	3'-0" X 6'-8"	RECEPTION	1 3/4"	F	METAL/GLASS								HI J1 S1	XX	HARDWARE BY MFR
	102	3'-0" X 6'-8"	CORRIDOR	1 3/4"	F	WOOD/GLASS								HI J1 S1	XX	HARDWARE BY MFR
	108	3'-0" X 6'-8"	MAIL ROOM OFFICE	1 3/4"	F	WOOD-SOLID CORE								HI J1 S1	XX	PROVIDE CLOSERS
	117	3'-0" X 6'-8"	MEN'S BATHROOM	1 3/4"	F	WOOD-SOLID CORE								HI J1 S1	XX	PROVIDE CLOSERS
	118	3'-0" X 6'-8"	WOMEN BATHROOM	1 3/4"	F	WOOD-SOLID CORE								HI J1 S1	XX	PROVIDE CLOSERS
	119	3'-0" X 6'-8"	UNIBEX BATHROOM	1 3/4"	F	WOOD-SOLID CORE								HI J1 S1	XX	PROVIDE CLOSERS
	122	3'-0" X 6'-8"	LEASING OFFICE	1 3/4"	F	WOOD-SOLID CORE								HI J1 S1	XX	HARDWARE BY MFR
	123	3'-0" X 6'-8"	COFFEE BAR	1 3/4"	F	WOOD-SOLID CORE								H3 J3 S1	XX	HARDWARE BY MFR
	124	3'-0" X 6'-8"	ASSISTANT PROPERTY	1 3/4"	F	WOOD-SOLID CORE								HI J1 S1	XX	PROVIDE CLOSERS
	124A	3'-0" X 6'-8"	ASSISTANT PROPERTY	1 3/4"	F	WOOD-SOLID CORE								H3 J3 S1	XX	HARDWARE BY MFR
	125	3'-0" X 6'-8"	PROPERTY MANAGER	1 3/4"	F	WOOD-SOLID CORE								HI J1 S1	XX	PROVIDE CLOSERS
	126	3'-0" X 6'-8"	JANITOR CLOSET	1 3/4"	F	WOOD-SOLID CORE								HI J1 S1	XX	PROVIDE CLOSERS
	127	3'-0" X 6'-8"	MAINTENANCE OFFICE	1 3/4"	F	WOOD-SOLID CORE								HI J1 S1	XX	PROVIDE CLOSERS
	134	3'-0" X 6'-8"	GUEST OFFICE	1 3/4"	F	WOOD-SOLID CORE								HI J1 S1	XX	HARDWARE BY MFR
	135	(2) 3'-0" X 6'-8"	VESTIBULE	1 3/4"	2FG	WOOD-SOLID CORE								HI J1 S1	XX	PROVIDE CLOSERS
	136	(2) 3'-0" X 6'-8"	VESTIBULE	1 3/4"	2FG	WOOD-SOLID CORE								H4 J4 S2		

**WINDOW / LOUVER SCHEDULE**

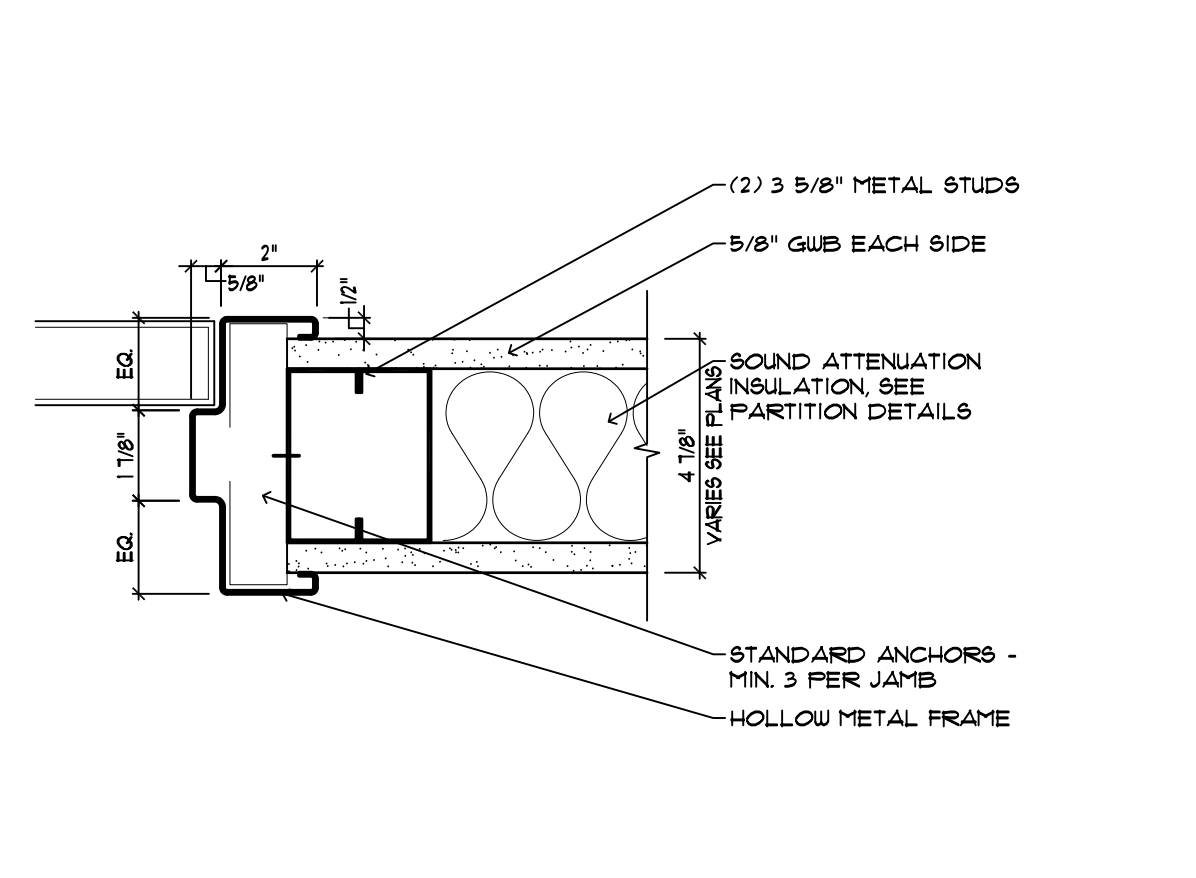
WINDOW TAG	WINDOW				GLASS	FRAME			DETAILS			REMARKS
	STYLE	HEAD HGT	WIDTH	HEIGHT		FINISH	TYPE	HEAD	JAMB	SILL		
AA	SLIDER	1'-0"	4'-0"	6'-0"		FACTORY	VINYL	1	2	3		

**GENERAL DOOR SCHEDULE NOTES**

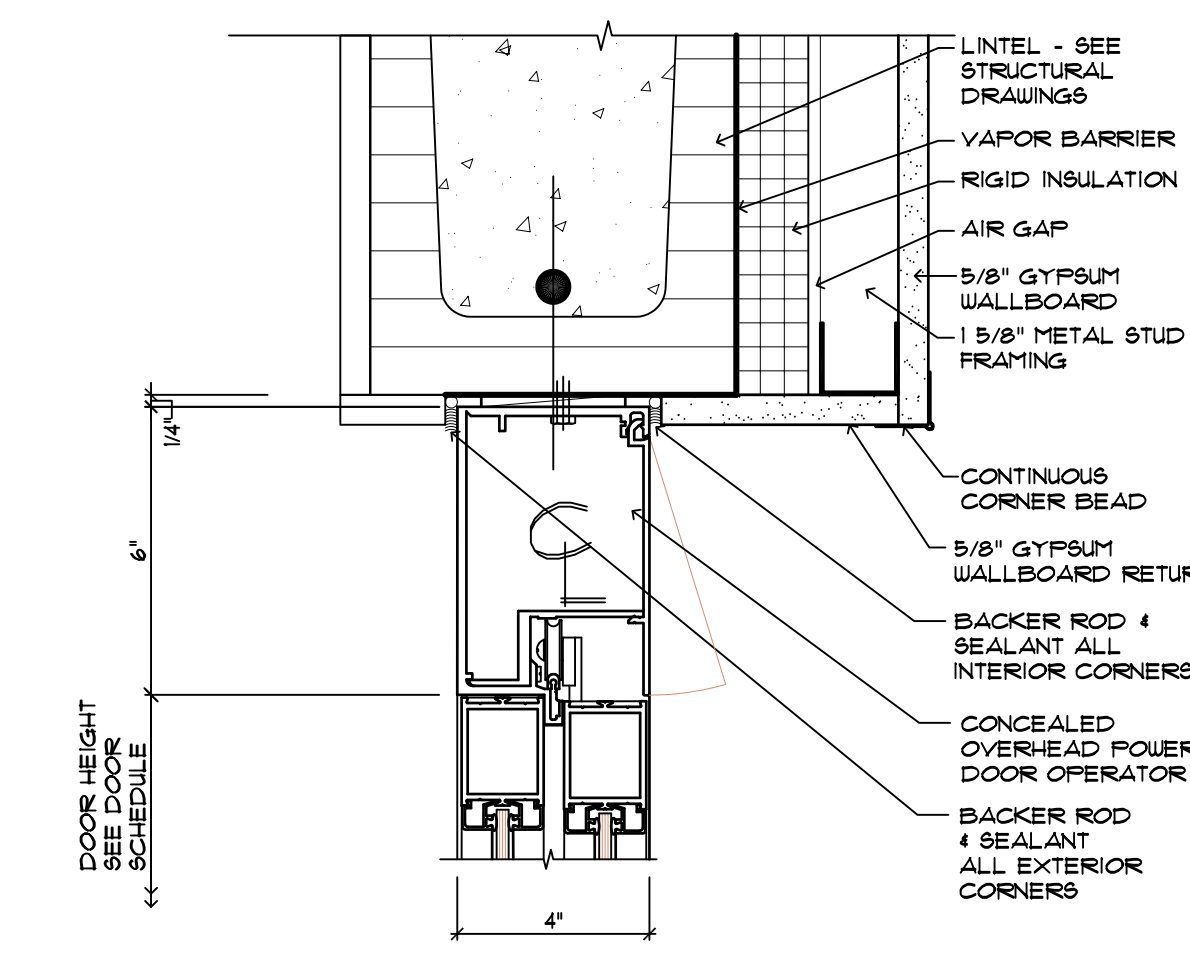
- ASTRAGAL: ALL WOOD FIRE RATED PAIRS AND DOUBLE EGRESS FIRE DOORS SHALL HAVE APPROVED METAL ASTRAGALS.
  - HARDWARE: METAL DOOR LABELS CERTIFYING UL FIRE RATINGS SHALL BE INSTALLED ON THE HINGE SIDE OF THE DOOR ON ALL RATED OR CERTIFIED DOORS OR ASSEMBLIES.
  - HEIGHT: ALL INTERIOR DOORS ARE 6'-8" HIGH UNLESS OTHERWISE NOTED.
  - RAIN DRIP: PROVIDE ANODIZED, EXTRUDED ALUMINUM RAIN DRIP AT ALL EXTERIOR DOORS NOT PROTECTED BY CANOPY OR OVERHANGS.
  - DOOR STOPS: PROVIDE WOOD BLOCKING FOR EACH WALL MOUNTED DOOR STOP WHERE A METAL STUD PARTITION HAS BEEN SPECIFIED. REFER TO DETAIL. ALSO PROVIDE DOOR STOPS IN ELECTRICAL ROOMS WHERE DOOR OPENS AGAINST PANELS AND IN ROOMS WHERE DOOR OPENS AGAINST CABINETS.
  - FINISHES FOR ALL EXTERIOR FRAMES AND DOORS TO BE SELECTED.
1. SEE DRAWING A601 FOR DOOR DETAILS.  
2. ALL DOOR HARDWARE TO HAVE BRUSHED NICKEL FINISH



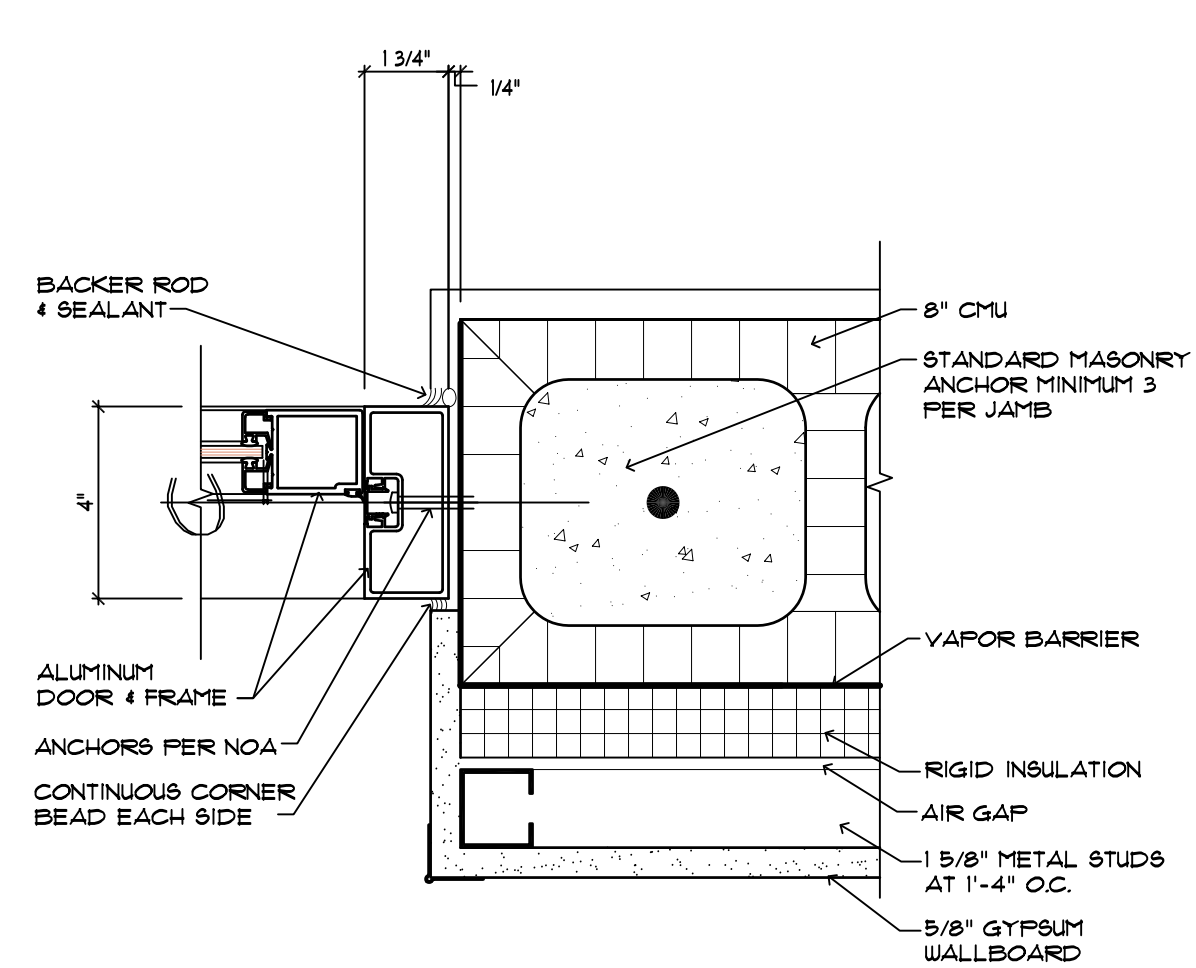
**H1 HOLLOW METAL HEAD DETAIL**  
SCALE: 3" = 1'-0"



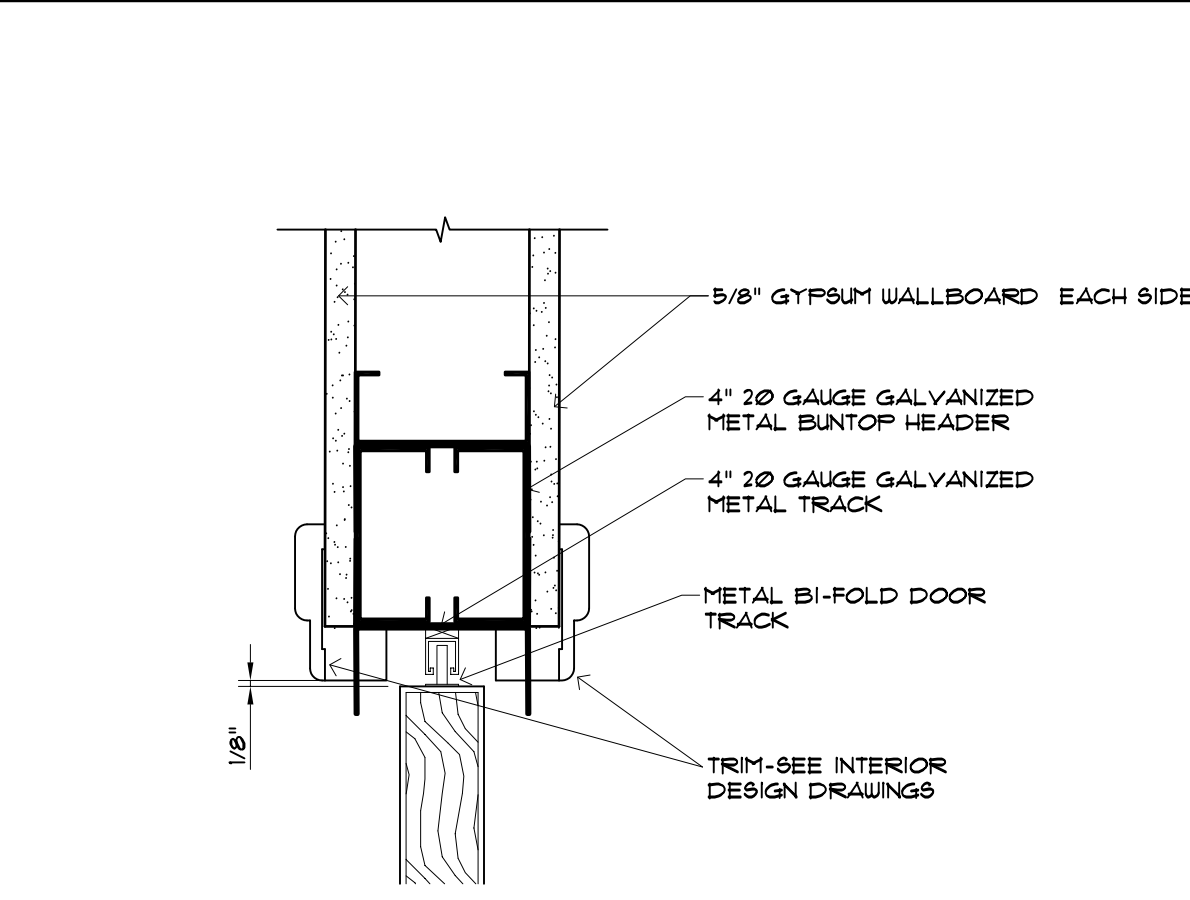
**J1 HOLLOW METAL JAMB DETAIL**  
SCALE: 3" = 1'-0"



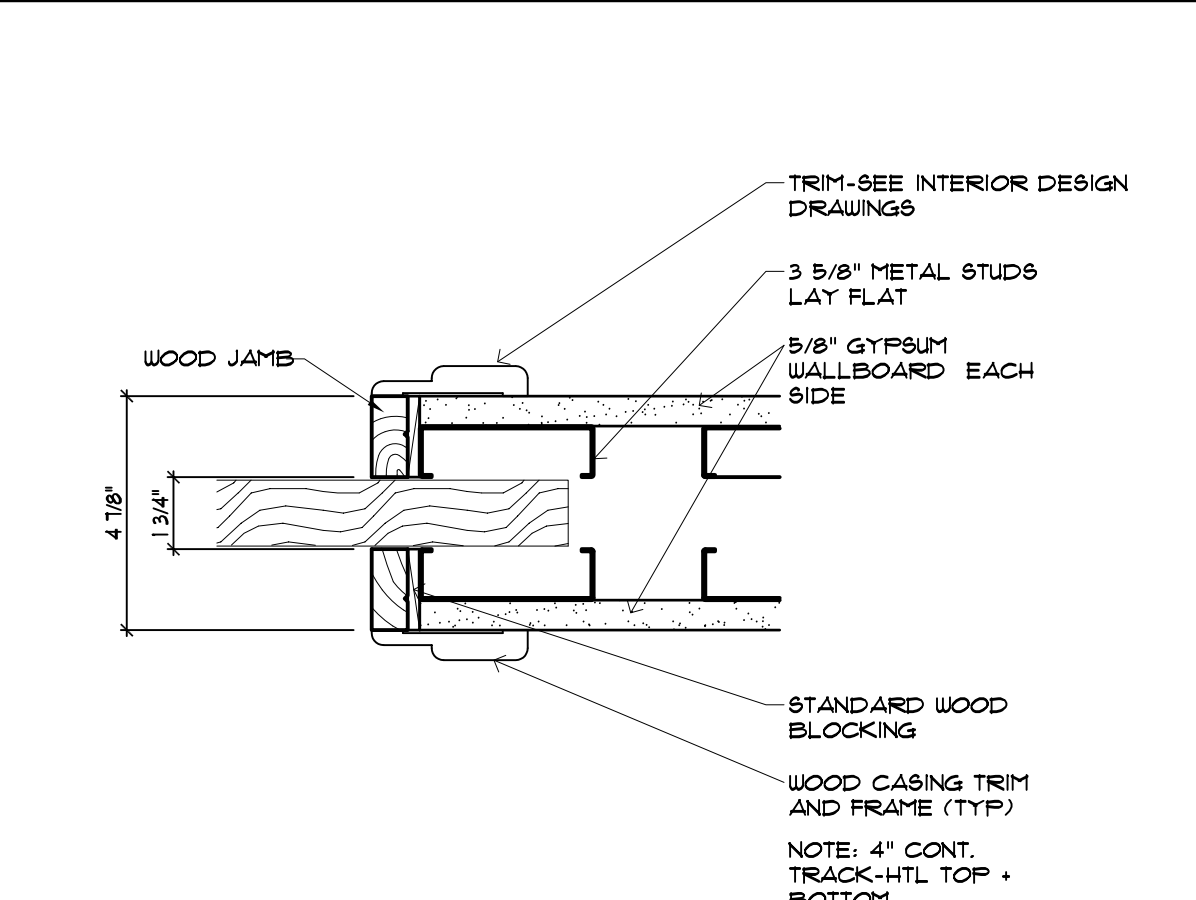
**H2 POWER DOOR HEAD DETAIL**  
SCALE: 3" = 1'-0"



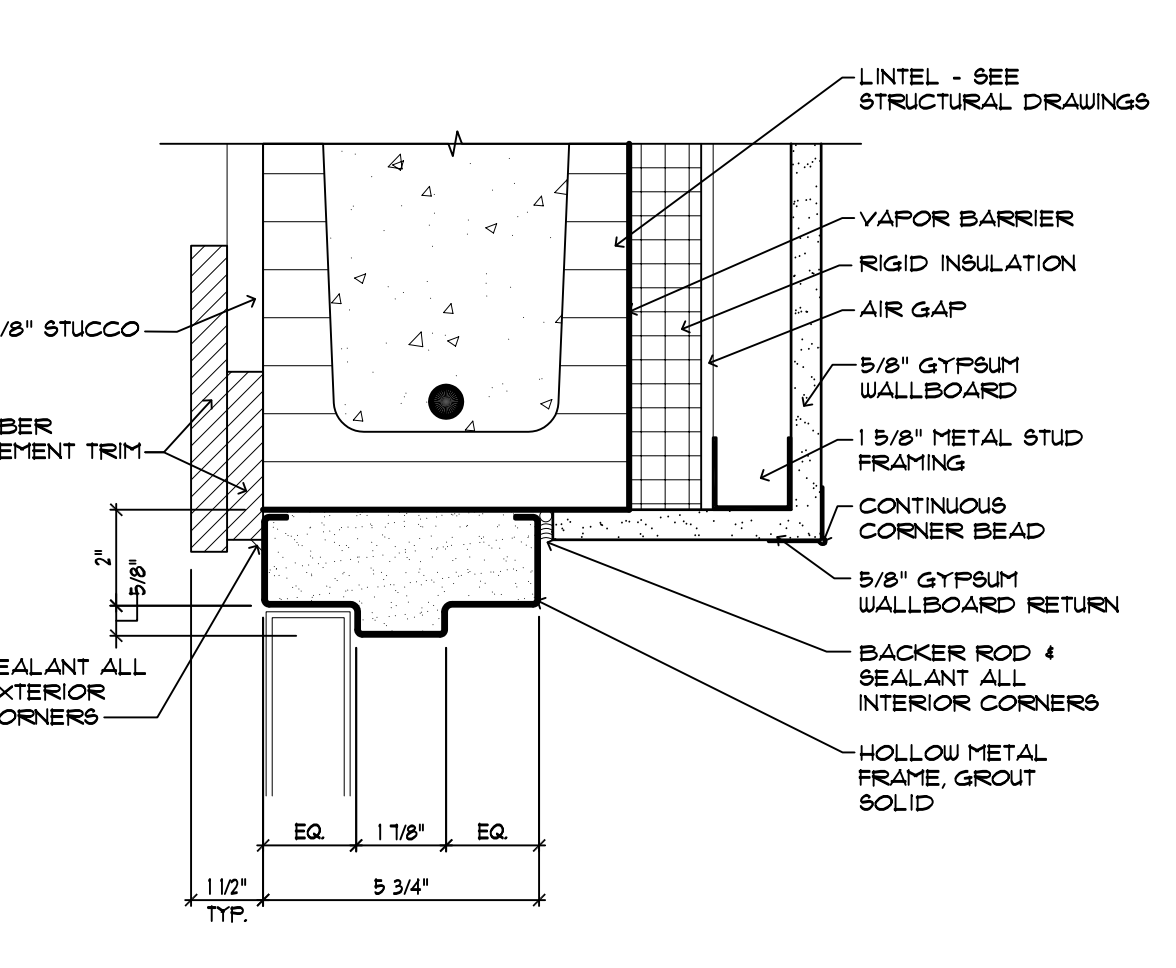
**J2 POWER DOOR JAMB DETAIL**  
SCALE: 3" = 1'-0"



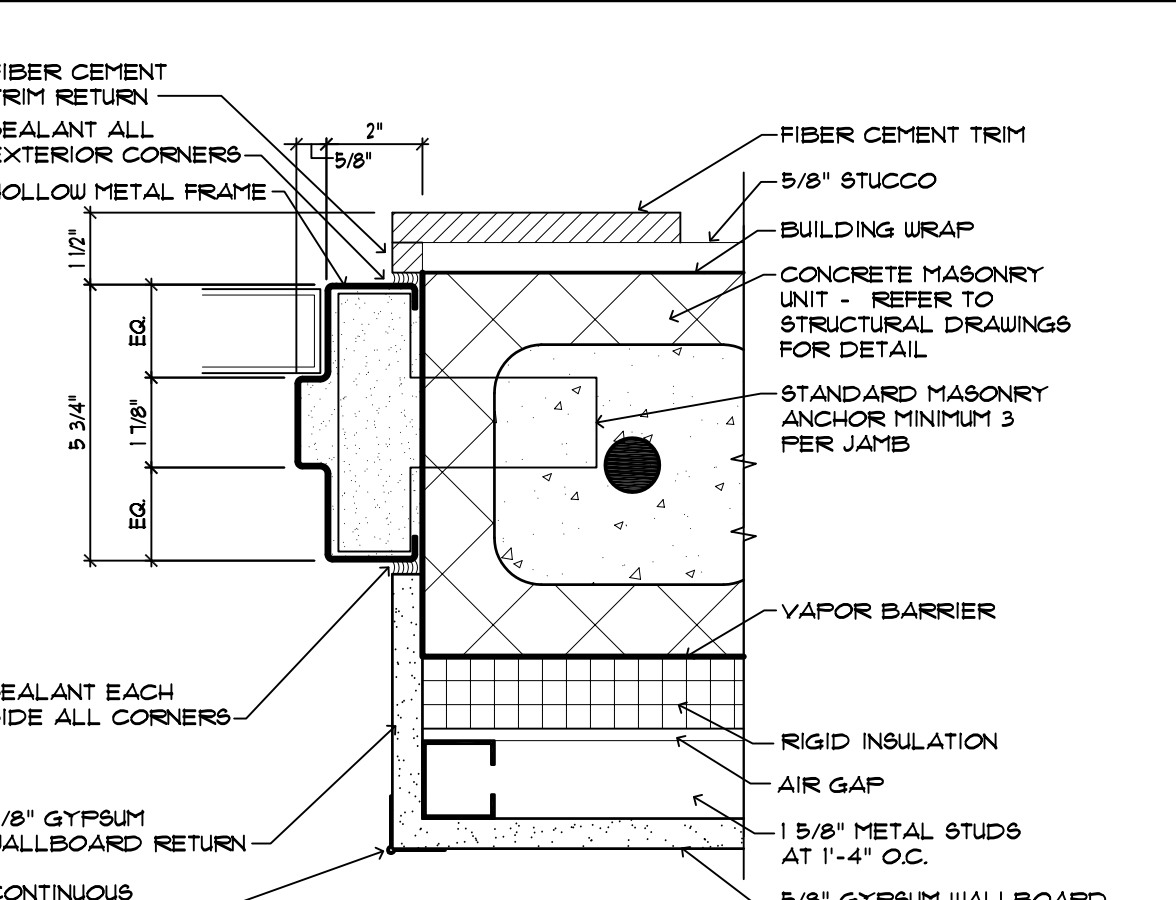
**H3 POCKET DOOR HEAD DETAIL**  
SCALE: 3" = 1'-0"



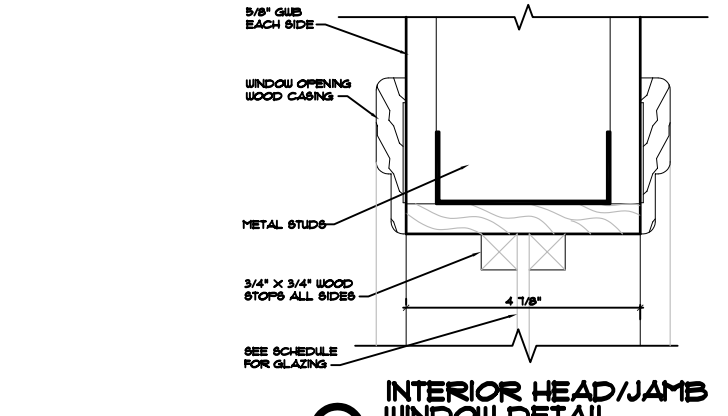
**J3 POCKET DOOR JAMB DETAIL**  
SCALE: 3" = 1'-0"



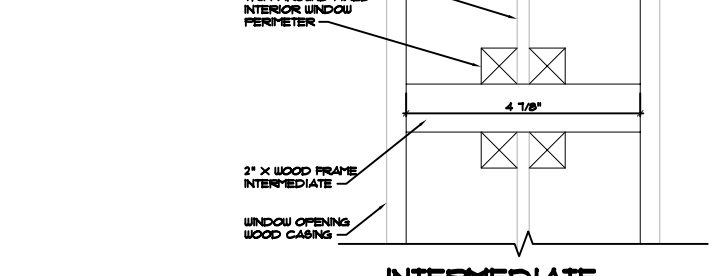
**H4 HOLLOW METAL HEAD DETAIL**  
SCALE: 3" = 1'-0"



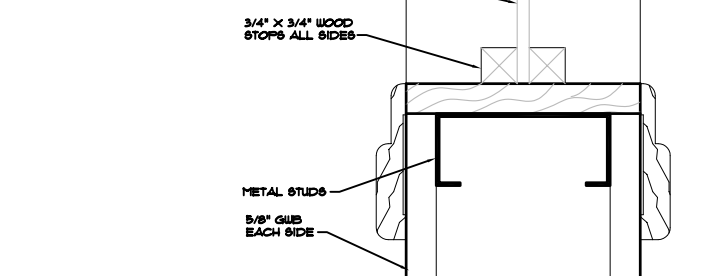
**J4 HOLLOW METAL JAMB DETAIL**  
SCALE: 3" = 1'-0"



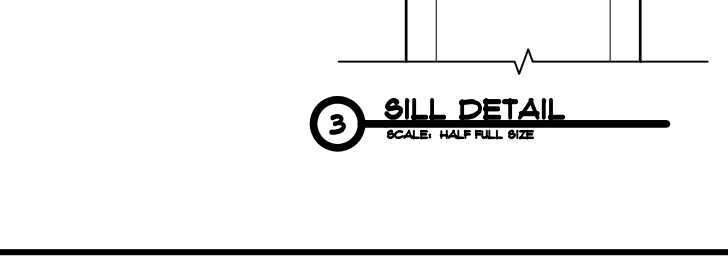
**AA HORIZONTAL SLIDER**



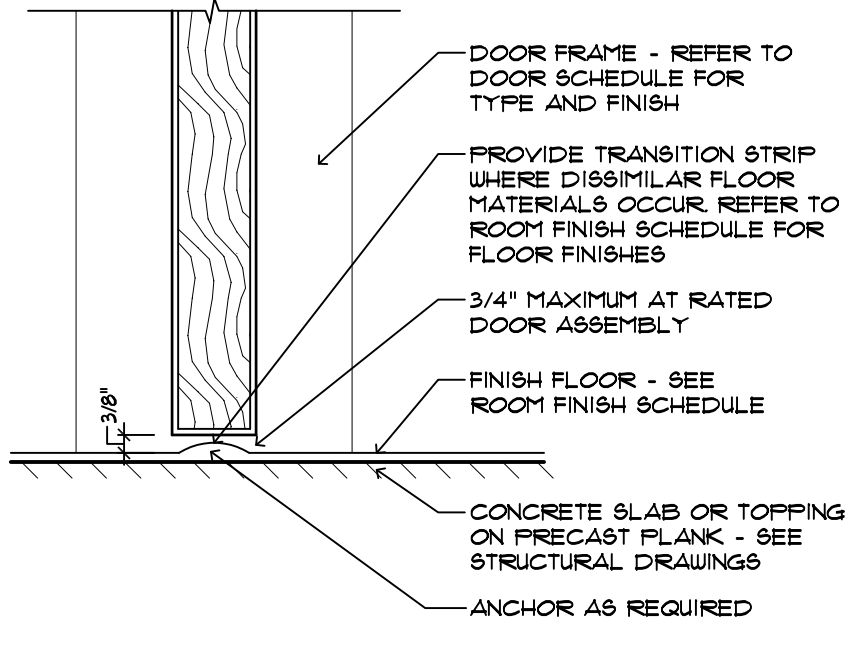
**1 INTERIOR HEAD/JAMB WINDOW DETAIL**  
SCALE: 1/2" = 1'-0"



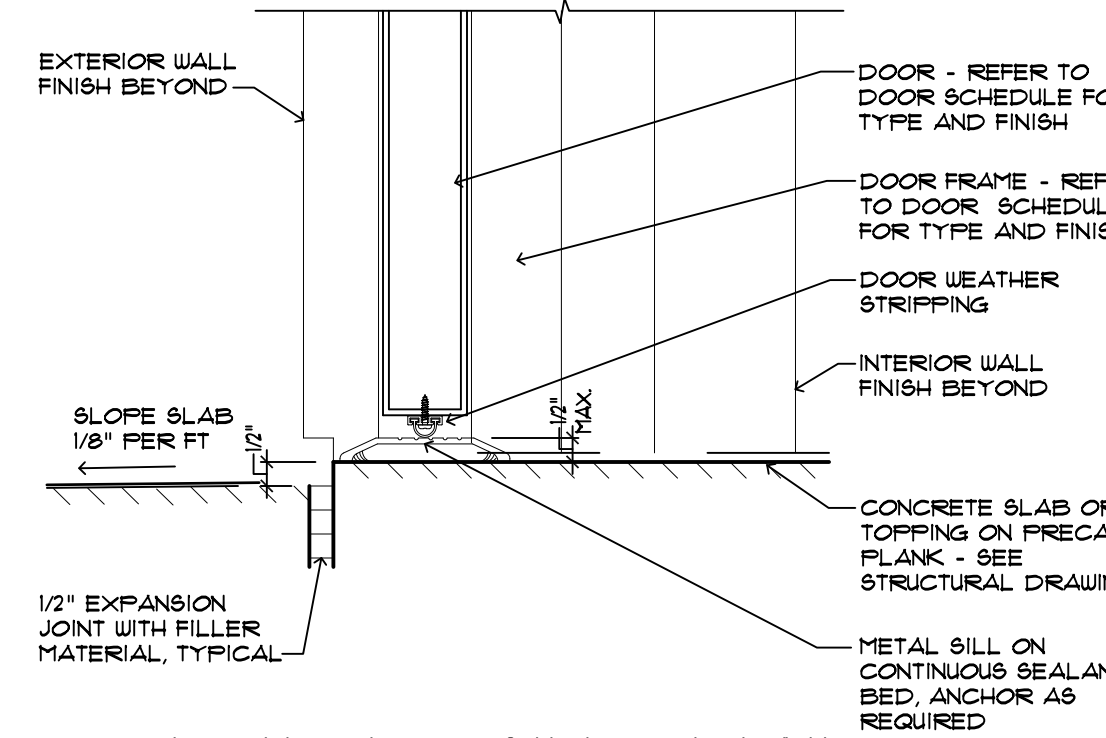
**2 INTERMEDIATE WINDOW DETAIL**  
SCALE: 1/2" = 1'-0"



**3 SILL DETAIL**  
SCALE: 1/2" = 1'-0"



**S1 TYPICAL UNDERCUT OF DOOR**  
SCALE: 3" = 1'-0"



**S2 EXTERIOR SILL DETAIL AT HOLLOW METAL DOOR**  
SCALE: 3" = 1'-0"

**BESSOLO**  
DESIGN GROUP, INC.  
ARCHITECTURE ■ DEVELOPMENT  
License #AA-C002117  
7901 4TH ST. NORTH, SUITE 200  
ST. PETERSBURG, FL 33702  
727 894-4453 ■ www.bessolo.com

PROFESSIONAL SEAL

KEVIN J. BESSOLO  
ART 2009

THIS DRAWING AND ALL INFORMATION CONTAINED HEREIN IS THE PROPERTY OF BESSOLO DESIGN GROUP, INC. NO PART OF THIS DRAWING OR INFORMATION CONTAINED HEREIN SHALL BE REPRODUCED OR TRANSMITTED IN ANY FORM OR BY ANY MEANS, ELECTRONIC OR MECHANICAL, INCLUDING PHOTOCOPYING, RECORDING, OR BY ANY INFORMATION STORAGE AND RETRIEVAL SYSTEM, WITHOUT THE EXPRESS WRITTEN PERMISSION OF BESSOLO DESIGN GROUP, INC. ALL RIGHTS ARE RESERVED. THIS DRAWING IS PRELIMINARY AND NOT FOR CONSTRUCTION PURPOSES UNLESS SHOWN AND SEALED BY KEVIN J. BESSOLO.

**BARBEE TOWERS**  
**RENOVATION**  
1100 E DRUID ROAD  
CLEARWATER, FL 33756

ISSUED  
DATE: 10/08/20  
08-15-20 CONSTRUCTION DOCUMENTS

**REVISIONS**

NO.	DATE	DESCRIPTION

PROJECT NO.: 190719.00  
DRAWN BY: BCG, MAC  
PROJECT MANAGER: RW  
CHECKED BY: KJB  
DATE: 08-15-20  
SCALE: AS NOTED

**A601**  
DOOR AND WINDOW  
SCHEDULE  
AND DETAILS