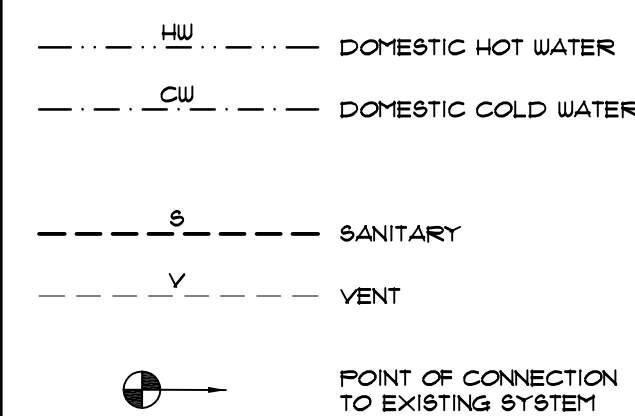


## PLUMBING ABBREVIATIONS

AD	ACCESS DOOR
AF	ABOVE FINISHED FLOOR
AP	ACCESS PANEL
BFF	BELOW FINISHED FLOOR
BFP	BACK FLOW PREVENTER
BLDG	BUILDING
CF	CAPPED FOR FUTURE
CLG	CEILING
CONT	CONTINUATION
COORD	COORDINATE
CTE	CONNECT TO EXISTING
CJ	COPPER
DC	DOUBLE CONTAINED
DFU	DRAINAGE FIXTURE UNIT
DIA	DIAMETER
DIW	DOWN IN WALL
DN	DOWN
DS	DOWNSPOUT
DW	DISHWASHER
DWG	DRAWING
E.C.O.	EXTERIOR CLEANOUT
ENC	ENCLOSURE
EXIST	EXISTING
FCO	FLOOR CLEANOUT
FDC	FIRE DEPARTMENT CONNECTION
GCO	GROUND CLEANOUT
GD	GARBAGE DISPOSER
GPM	GALLONS PER MINUTE
HVAC	HEATING, VENTILATING AND AIR CONDITIONING
ID	INTERIOR DESIGNER
INV.	INVERT ELEVATION
MAX	MAXIMUM
MBH	1000 BTU/Hr
MFR	MANUFACTURER
MIN	MINIMUM
MTD	MOUNTED
NTS	NOT TO SCALE
(R)	REMOVE
RD	ROOF DRAIN
(REL.)	RELOCATED
RM	ROOM
SS	STAINLESS STEEL
VBG	VENT BELOW GRADE
VTR	VENT THROUGH ROOF
WCO	WALL CLEANOUT
WHA	WATER HAMMER ARRESTOR

## PLUMBING SYSTEMS



## PLUMBING FIXTURE SCHEDULE

ITEM	DESIGNATION	MANUF / MODEL*	FINISH	W	V	C.W.	H.W.	DESCRIPTION
WC-1	FLUSH VALVE TOILET (ADA COMPLIANT)	AMERICAN STANDARD / 3641001020	WHITE	3"	2"	1"	-	-AMERICAN STANDARD 3641001020, VITREOUS CHINA, 120 GPF, POWERWASH RIM SCRUBS BOWL WITH EACH FLUSH, 3" FLUSH VALVE, CHROME FINISH TRIP LEVER IS SUPPLIED.
UR-1	URINAL (ADA COMPLIANT)	PROFLO FF1825UH		2"	1 1/2"	3/4"	-	-PROFLO FF1825UH, VITREOUS CHINA, ADA COMPLIANT (INSTALL AT 1" AFF), HIGH EFFICIENCY, 3/4" TOP SPUD, 2" REAR OUTLET, 10 GALLON PER FLUSH, INCLUDES HANGING WALL BRACKET AMERICAN STANDARD 6045101002 120 GPF MANUAL URINAL FLUSH VALVE.
L-1	LAVATORY (UNITS/BATHING) (ADA COMPLIANT)	AMERICAN STANDARD (LUCERNE WALL MOUNTED SINK)	2" WHITE 1 1/2" Ø20	1/2"	2"	1/2"	1/2"	LUCERNE WALL-MOUNT LAVATORY, VITREOUS CHINA, WALL-MOUNT CARRIER MODEL 0356 Ø15 Ø" CTS WITH CONCEALED ARMS, DBL-HOLE, WHITE, OVERFLOW HOLE - SLOAN FAUCET (MODEL SF-2150) SINGLE LEVEL HANDLE, 12 GPM, INCLUDES SOAP DISPENSER, BRASS CONSTRUCTION SINGLE-HOLE INSTALLATION, POLISHED CHROME, PRE-ATTACHED FLEXIBLE SUPPLY LINES, POINT OF USE SHALL BE PROPERLY TEMPERED DOWN TO A MAX. OF 109 DEG. TEMPERATURE BY USE OF A PERMANENT TEMPERATURE MIXING DEVICE.
IM-1	ICE MAKER BOX	SIoux CHIEF / 6696		-	-	1/2"	-	-SERIES 696 OX BOX ICE MACHINE OUTLET BOX WITH WATER HAMMER ARRESTOR.
EWCO-1	ELECTRIC WATER COOLER	ELKAY / WGB38423N		2"	2"	1/2"	-	-TWO STATION WALL MOUNTED WATER COOLER WITH REFILLING STATION 4 BARRIER FREE ACCESS.
S-1	KIT, SINK	AMERICAN STANDARD / 228B.62522835.075		2"	1 1/2"	1/2"	1/2"	-ADA 25"X22" DROP-IN SINGLE COMPARTMENT SINK WITH FAUCET LEDGE, SINGLE HOLE MOEN FAUCET #1594EUSRS WITH HIGH ARC SINGLE ARBOR HANDLE. SPOT RESISTANT 9/9
MS-1	MOP SINK	MUSTEE / 663M		2"	2"	1/2"	1/2"	-MOP SERVICE BASIN, WITH THREE MOP HANDLE HANGERS, "DURAGUARD" WALL GUARDS AND 2" DRAIN SEAL. -MUSTEE 663000A - WALLMOUNT SERVICE SINK FAUCET, TWO HANDLE, CHROME PLATED FINISH, HOSE WHOSE HOLDER, FAIL HOOK, AND WALL BRACE.

- COORDINATE WITH ID FOR FINISHES OF FIXTURES AND FAUCETS.
- COORDINATE WITH ARCHITECT/ENGINEER FOR ANY DISCREPANCY PRIOR TO BIDDING.
- ALL WALL HUNG FIXTURES SHOULD BE INSTALLED WITH FLOOR MOUNTED WALL HANGER SUPPORT.
- COORDINATE WITH ARCHITECTURAL FOR PLUMBING FIXTURES EXACT LOCATIONS.
- CONTRACTOR TO BE RESPONSIBLE FOR INSTALLING ALL NECESSARY AND OPTIONAL HARDWARE, FITTINGS, VALVES, MIXING VALVES, ESCUTCHEONS, MATERIALS, EQUIPMENT, ACCESSORIES, ETC. TO ASSURE SYSTEMS FUNCTION AS INTENDED BY THIS DESIGN, MANUFACTURER'S RECOMMENDATIONS AND ALL APPLICABLE CODES. FOR ANY DISCREPANCY CONSULT WITH ENGINEER PRIOR TO BIDDING. NO CHANGE ORDER SHALL BE ACCEPTED AFTER CONTRACT IS AWARDED FOR THE SPECIFIED WORK.

## PLUMBING GENERAL NOTES

- FLORIDA BUILDING CODE (2017) FOR PLUMBING REFERENCE, SHALL BE THE SOURCE OF INFORMATION (CONTRACTOR SHALL COMPLY WITH ALL NOTES WHERE APPLICABLE)
- CONTRACTOR SHALL BE RESPONSIBLE FOR PROVIDING ALL NECESSARY FITTINGS AS REQUIRED BY ALL APPLICABLE CODES AND GOVERNING AUTHORITIES.
  - CONTRACTOR SHALL VERIFY AND CORRECT AS REQUIRED TO MEET ALL CODES AND REGULATIONS ANY POSSIBLE DISCREPANCIES BETWEEN TYPE AND SIZE OF CONNECTION SPECIFIED IN PLUMBING FIXTURE SCHEDULE AND FIXTURES ACTUALLY INSTALLED ON THE SITE. ALL DOMESTIC WATER PIPING TO BE LEAD FREE.
  - ALL SANITARY AND WATER SUPPLY LINES SHALL BE MARKED WITH THE SEAL OF APPROVAL OF THE NATIONAL SANITATION FOUNDATION.
  - ALL SANITARY PIPING SHALL HAVE A MINIMUM 1/4" PER FOOT SLOPE FOR PIPE UP TO 2 1/2", 1/8" PER FOOT SLOPE PIPE 3" TO 6" AND 1/16" PER FOOT SLOPE FOR PIPING 8" OR LARGER.
  - VALVES AND FITTINGS SHALL BE OF THE SAME SIZE AS THE LINE ON WHICH THEY ARE LOCATED UNLESS OTHERWISE INDICATED ON DRAWINGS. INSTALL 12X12 ACCESS PANEL FOR EACH VALVE IF IT IS NOT ACCESSIBLE BY CEILING TILES.
  - CONTRACTOR SHALL COORDINATE ALL WORK WITH OTHER TRADES.
  - CONTRACTOR SHALL FIELD VERIFY ALL MEASUREMENTS AND LOCATIONS OF CONNECTED SANITARY AND WASTE PIPING, NOTIFY ARCHITECT OF ANY DISCREPANCIES PRIOR TO CONSTRUCTION.
  - CONTRACTOR SHALL BE RESPONSIBLE FOR MAINTAINING FIRE RATING AND WEATHERPROOFING INTEGRITY OF ALL PIPING PENETRATIONS. SEE ARCHITECTURAL PLANS FOR PENETRATION DETAILS.
  - ALL WATER SUPPLY AND SANITARY LINES SHALL RUN AS CLOSE TO PLANS AS POSSIBLE WITH NO CHANGES IN SIZING. ROUTE ALL PIPING CONCEALED ABOVE CEILINGS, WITHIN WALLS, OR IN CHASES EXCEPT AS SPECIFICALLY NOTED OR IN MECHANICAL ROOMS.
  - CONTRACTOR SHALL BE RESPONSIBLE FOR PROVIDING ALL NECESSARY SUPPORTING DEVICES FOR ALL FIXTURES INCLUDED IN CONTRACT, OR HEREIN SPECIFIED OR OTHERWISE.
  - INSTALL WATER HAMMER SHOCK ARRESTORS AT BATTERY OF FIXTURES, AND AT EACH FIXTURE WHERE REQUIRED. ARRESTORS SHALL BE FACTORY FABRICATED. INSTALL ARRESTORS AND SIZE PER PLUMBING AND DRAINAGE INSTITUTE STANDARD P.D.I. UH-201. ACCEPTABLE MANUFACTURERS: SIOUX CHIEF, ZURN, JOSEPH AND JAY R. SMITH.
  - AIR CHAMBERS SHALL NOT BE CONSIDERED EQUAL TO WATER HAMMER ARRESTORS.
  - CONTRACTOR SHALL GIVE 72 HOURS NOTICE TO APPLICABLE UTILITY COMPANY PRIOR TO PERFORMING WORK INVOLVING UTILITIES.
  - PROVIDE ACCESS PANELS TO ALL VALVES AND CLEANOUTS WITHIN CHASES OR ABOVE NON-ACCESSIBLE CEILINGS. REFER TO ARCHITECTURAL DRAWINGS FOR CEILING TYPES.
  - REFER TO ARCHITECTURAL DRAWINGS FOR EXACT PLUMBING FIXTURE LOCATIONS, MOUNTING HEIGHTS AND DIMENSIONS.
  - CONTRACTOR SHALL INSTALL DIELECTRIC UNIONS AT CONNECTIONS OF DISSIMILAR METALS.
  - CONTRACTOR SHALL ROUGH-IN ALL WASTES AND SUPPLIES TO SPECIAL EQUIPMENT ACCORDING TO MANUFACTURERS SHOP DRAWINGS AND MAKE FINAL CONNECTIONS. ALL SUPPLIES SHALL BE VALVED. INSTALL BACK FLOW PREVENTERS WHERE REQUIRED BY CODE.
  - CONTRACTOR SHALL SUBMIT SHOP DRAWINGS (INCLUDING PIPE ROUTING AND EQUIPMENT LOCATION) TO ARCHITECT/ENGINEER FOR REVIEW PER PROJECT SPECIFICATIONS.
  - MOUNT THE FLUSH HANDLES ON THE WATER CLOSETS IN THE ACCESSIBLE TOILET ROOMS TOWARD THE WIDE SIDE OF THE ROOM.
  - REFER TO SPECIFICATIONS FOR ALL PIPING MATERIALS AND INSULATION REQUIREMENTS.
  - DRAWINGS, SPECIFICATIONS AND THE FLORIDA BUILDING CODE ARE PART OF THE DESIGN SET. IF THERE IS ANY CONFLICT OR DISCREPANCY BETWEEN THEM, THE MORE STRICT RULE SHALL BE ENFORCED. REQUESTS FOR INFORMATION MAY BE SUBMITTED TO THE ENGINEER FOR CLARIFICATIONS PRIOR TO BIDDING AS PER PROJECT SPECIFICATIONS.
  - USE 1/4 TURN VALVES AT ALL PLUMBING FIXTURES AND FAUCET SUPPLY WATER LINE.
  - PROVIDE 1/2" CW SUPPLY WITH ANGLE STOP AND FLEXIBLE SUPPLY TO REFRIGERATOR(S) WITH ICE MAKERS, AT HEIGHT REQUIRED BY MANUFACTURER OF EQUIPMENT INSTALLED.
  - SEAL AND PROTECT ALL FLOOR PENETRATIONS.
  - CONNECT ALL CONDENSATE TO STERN DRAIN OR LANDSCAPE, UNLESS NOTED OTHERWISE.
  - INSTALL WATER PRESSURE REDUCING VALVE AT THE OUTLET OF EACH COLD WATER BRANCH OR RISER SUPPLIED BY DOMESTIC WATER PUMP. WATER PRESSURE REDUCING VALVE SHALL BE "WATTS" MODEL # LF25AYB-23 OR EQUAL. SEE DRAWINGS FOR SIZE. IT IS RECOMMENDED THAT A VELOCITY BETWEEN 5 AND 8 FEET PER SECOND BE MAINTAINED.
  - THE CONTRACTOR IS EXPECTED TO ORDER ALL MATERIALS IN SUFFICIENT TIME TO AVOID DELAYING THE COMPLETION OF THE PROJECT. DELAY IN DELIVERIES WILL NOT BE CONSIDERED A JUSTIFIABLE REASON FOR SUBMISSION OF SUBSTITUTE MATERIALS.
  - COORDINATE WITH INTERIOR DESIGN FOR FINISHES OF FIXTURES AND FAUCETS.
  - COORDINATE ANY DISCREPANCIES WITH ARCHITECT/ENGINEER PRIOR TO BIDDING.
  - ALL WALL HUNG FIXTURES SHOULD BE INSTALLED WITH FLOOR MOUNTED WALL HANGER SUPPORT.
  - PROVIDE WITH ALL NECESSARY AND OPTIONAL HARDWARE, FITTINGS, ESCUTCHEONS, ETC. TO ASSURE SYSTEMS WORK PROPERLY. COORDINATE ANY DISCREPANCIES WITH ENGINEER PRIOR TO BIDDING. NO CHANGE ORDER SHALL BE ACCEPTED AFTER CONTRACT IS AWARDED FOR THE SPECIFIED WORK.
  - HOT WATER PIPING SHALL BE INSULATED WITH 1" OF INSULATION HAVING CONDUCTIVITY NOT EXCEEDING 21 BTU PER IN/H X FT X F PER FLORIDA BUILDING CODE PLUMBING SUBSECTION 607.5.

## INDEX OF PLUMBING DRAWINGS

P001	GENERAL PLUMBING INFORMATION
PD101	PARTIAL FIRST FLOOR PLUMBING DEMOLITION PLAN
PD101	PARTIAL FIRST FLOOR PLUMBING PLAN
P501	PARTIAL ISOMETRIC PLUMBING DIAGRAMS
P601	PLUMBING DETAILS

ARCHITECTURE ■ DEVELOPMENT  
 License # AA-C002117  
 7901 4TH ST. NORTH, SUITE 200  
 ST. PETERSBURG, FL 33702  
 727 894-4453 www.bessolo.com

License # EB-00077103  
 7901 4TH ST. NORTH, SUITE 200  
 ST. PETERSBURG, FL 33702  
 727 894-4668  
 PROFESSIONAL SEAL  
 Gregory M. Clements, P.E.  
 State of Florida 62775

**BARBEE TOWERS RENOVATION**  
 1100 E DRUID ROAD  
 CLEARWATER, FL 33756

ISSUED  
 DATE: 10/06/20  
 09-15-20 CONSTRUCTION DOCUMENTS

REVISIONS		
NO.	DATE	DESCRIPTION

PROJECT NO: 19079.00  
 DRAWN BY: TLJ  
 PROJECT MANAGER: RW  
 CHECKED BY: GMC  
 DATE: 09-15-20  
 SCALE: NOT TO SCALE

**PLUMBING LINE TYPES**

- EXISTING SAN. PIPING TO REMAIN
- EXISTING VENT PIPING TO REMAIN
- EXISTING WATER PIPING TO REMAIN
- XXXXXXXXXXXXXXXXXXXX EXISTING PIPING TO BE REMOVED
- NEW SANITARY PIPING
- NEW SANITARY PIPING
- NEW COLD WATER PIPING
- NEW HOT WATER PIPING (10° DEG.)

**DEMO KEYED NOTES:**

- 1 SECURE CU SUPPLY & REMOVE W.C. CAP EXISTING SAN. DRAIN BELOW FINISHED FLOOR & CAP VENT RISER ABOVE FINISHING WALL. REMOVE CARRIER FROM WALL AS REQUIRED TO FINISH WALL PROPERLY. PRESERVE CU SUPPLY TO W.C. & RE-WORK PIPING TO ACCOMMODATE NEW W-1 FIXTURE FOR NEWLY PROPOSED REFRIGERATOR AS SHOWN ON PD101 SHEET.
- 2 SECURE CU/HW SUPPLY PIPING FOR LAV. & REMOVE WITH CARRIER. CAP SANITARY AS REQUIRED & VENT PIPING ABOVE CEILING LEVEL. PRESERVE CU/HW PIPING & ISOLATION VALVES ABOVE CEILING FOR SERVICE TO NEWLY PROPOSED SINK & WATER COOLER/H/LAV FIXTURE. SEE RISER DIAGRAM FOR CLARIFICATION.
- 3 TRENCH NEW SANITARY TO EXIST. SANITARY AND PROPERLY CONNECT. ENSURE PROPER SLOPE FOR DRAINAGE. RE-USE EXISTING VENT PIPING FOR 2" DRAIN SYSTEM. OFFSET EXISTING AS REQUIRED.
- 4 REPLACE EXISTING FIXTURE UNITS TO THE NEWLY PROPOSED SCHEDULED FIXTURES. CONTRACTOR SHALL OBSERVE EXISTING CONDITIONS FOR ANY PLUMBING VARIANCES AS THEY APPLY TO NEWLY SCHEDULED FIXTURES.
- 5 PROPERLY CAP EXISTING CU SUPPLY AND SANITARY PIPING & REMOVE WATER COOLER FIXTURE. ANY CARRIER DEVICE NOT BENEATH WALL SURFACE SHALL BE REMOVED.
- 6 VERIFY CU SUPPLY TO ICE MAKER ON REFRIGERATOR FOR EXTENSION TO NEWLY PROPOSED REFRIGERATOR LOCATION.
- 7 CONNECT NEW 2" VENT TO EXISTING RESTROOM VENT PIPING ABOVE CEILING.

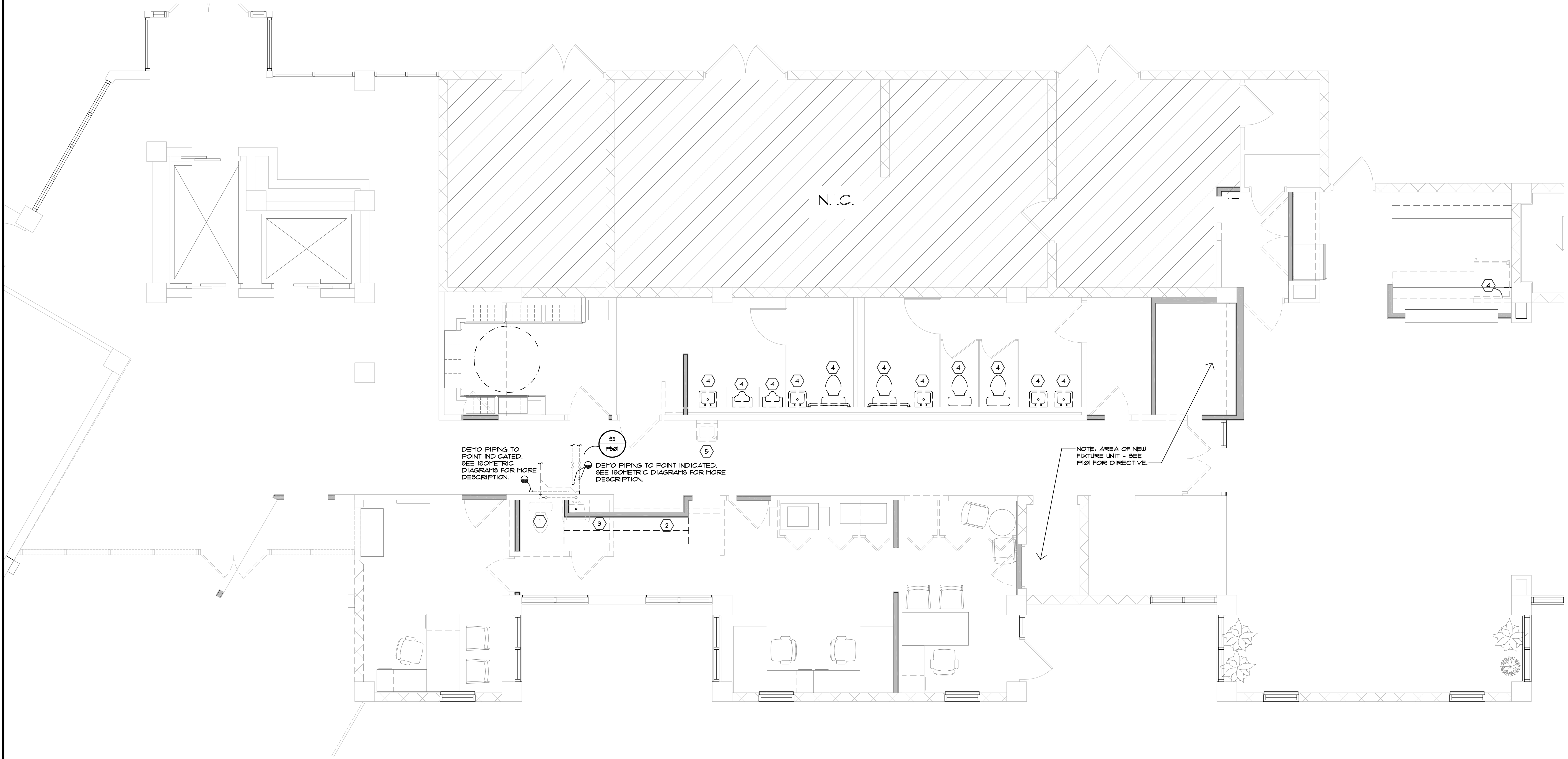
**DEMOLITION GENERAL NOTES:**

1. FOR ABBREVIATIONS, SYMBOLS, LEGEND AND GENERAL NOTES, SEE DRAWING PD00.
2. REFER TO PLUMBING UNIT PLANS AND PLUMBING ISOMETRICS FOR ROUTING AND PIPE SIZES.
3. THE PROJECT'S PLUMBING DRAWINGS AND SPECIFICATIONS MAKE NO PROVISIONS FOR THE DIVISION OF G.C./SUBCONTRACTOR SCOPE OF WORK. THE GENERAL CONTRACTOR SHALL ENSURE ALL SUBCONTRACTORS HAVE NECESSARY PROVISIONS FOR THE COMPLETE FUNCTIONING AND WARRANTED WITHOUT EXCEPTION. CONTRACTOR SHALL INCLUDE SUCH PROVISIONS IN THE BASE BID.
4. PRIOR TO WORK - SECURE MAIN SUPPLY WATER TO LIVING UNIT(S) & DRAIN DOWN COMPLETE CU/HW & WATER HEATER SYSTEMS. PROPERLY REMOVE ALL SCHEDULED FOR REPLACEMENT FIXTURES WITH REGARD TO PRESERVING BRANCH CONNECTIONS. PREPARE ALL EXISTING TO REMAIN FOR RECONNECTION, INCLUDING THE CLEANING OR RECONNECTION TERMINALS.
5. DURING THE REMOVAL PHASE OF ALL APPLIANCES, AN INSPECTION SHALL OCCUR TO INVENTORY WITH PHYSICAL VERIFICATION & SPECIFIED LOCATION FOR ANY PROBLEMS WITH CURRENT WATER SUPPLY & DRAINAGE SYSTEMS AND REPORT TO THE G.C. OF SUCH DEFLECTIONS.
6. PROVIDE NEW SERVICE SHUT-OFF VALVING TO ALL LOCAL APPLIANCE'S OR FIXTURE CONTROLS.

**BESSOLO**  
DESIGN GROUP, INC.  
ARCHITECTURE ■ DEVELOPMENT  
License #AA-C002117  
7901 4TH ST. NORTH, SUITE 200  
ST. PETERSBURG, FL 33702  
727 894-4453 www.bessolo.com

**KEM**  
ENGINEERS, INC.  
License # EB-0007103  
7901 4TH ST. NORTH, SUITE 200  
ST. PETERSBURG, FL 33702  
727 894-4668  
PROFESSIONAL SEAL

Copyright KEM Engineers, Inc. No drawing and all information contained herein may be reproduced, stored in a retrieval system, or transmitted in any form or by any means, electronic, mechanical, photocopying, recording, or by any information storage and retrieval system, without the prior written permission of KEM Engineers, Inc. This drawing is the property of KEM Engineers, Inc. and shall remain the property of KEM Engineers, Inc. on the date adjacent to the title block. Printed copies of this drawing may be made for personal use only. All other uses are prohibited. This drawing is not to be used for any other project without the prior written permission of KEM Engineers, Inc.



1 PARTIAL FIRST FLOOR DEMOLITION PLUMBING PLAN  
SCALE: 1/4" = 1'-0"



**BARBEE TOWERS**  
**RENOVATION**  
1100 E DRUID ROAD  
CLEARWATER, FL 33756

ISSUED  
DATE: ISSUED FOR:  
09-15-20 CONSTRUCTION DOCUMENTS

REVISIONS		
NO.	DATE	DESCRIPTION

PROJECT NO.: 19079.00  
DRAWN BY: TLJ  
PROJECT MANAGER: RW  
CHECKED BY: GMC  
DATE: 09-15-20  
SCALE: 1/4" = 1'-0"

**PD101**  
PARTIAL FIRST FLOOR  
DEMOLITION  
PLUMBING PLAN

### PLUMBING LINE TYPES

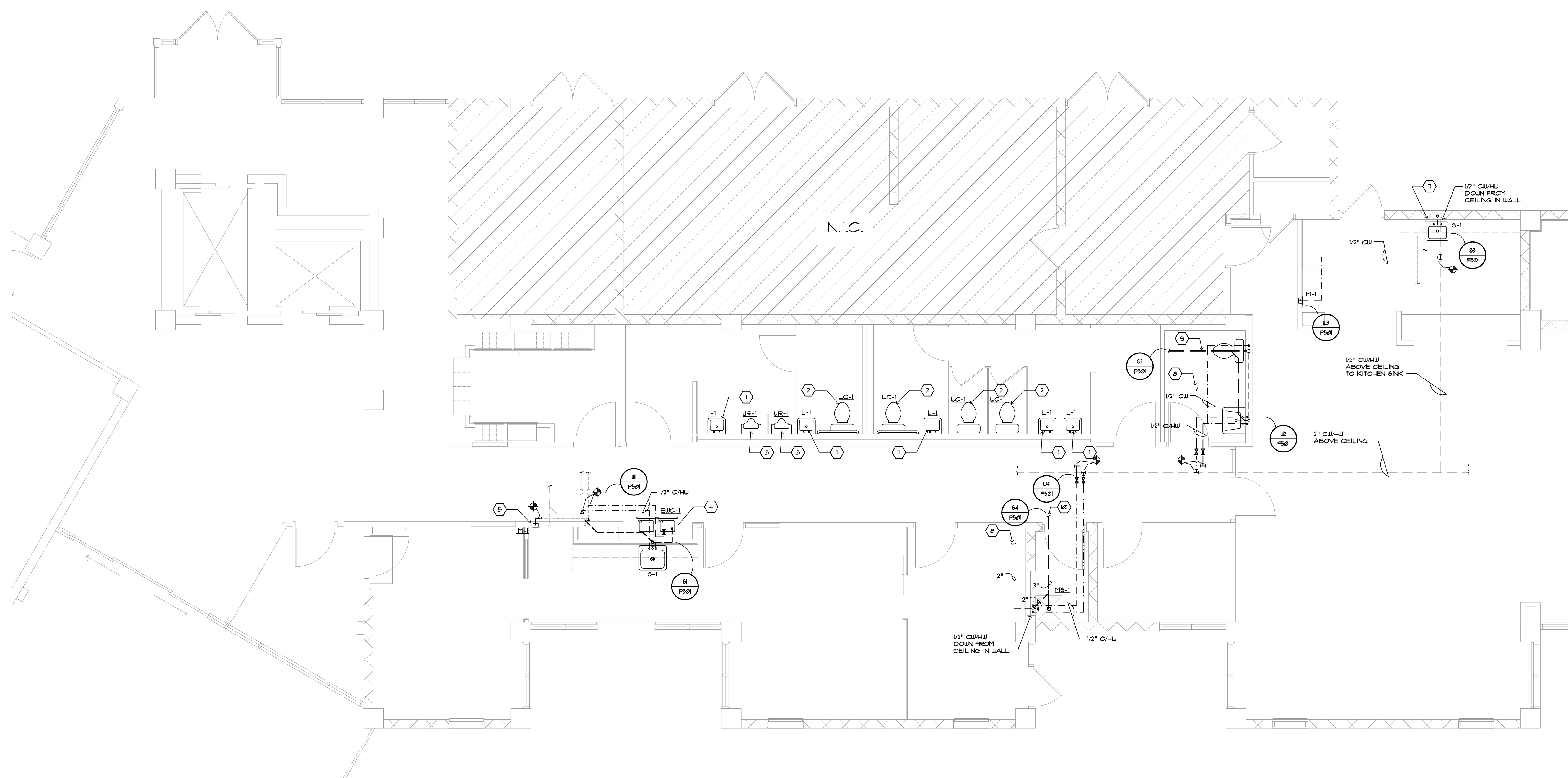
---	EXISTING SAN. PIPING TO REMAIN
---	EXISTING VENT PIPING TO REMAIN
---	EXISTING WATER PIPING TO REMAIN
---	NEW SANITARY PIPING
---	NEW SANITARY VENT PIPING
---	NEW COLD WATER PIPING
---	NEW HOT WATER PIPING (110 DEG.)

### INSTALLATION KEY NOTES:

- 1 PROPERLY FIT & CONNECT NEW LAVATORY (L-1) TO EXISTING WATER SUPPLY(S) AND DRAIN CONNECTION WITH NEW ISOLATION VALVES.
- 2 PROPERLY FIT & CONNECT NEW FIXTURE TO EXISTING CU WATER SUPPLY WITH NEW ISOLATION VALVE AND PROVIDE A NEW OUTLET SEAL FOR NEWLY SCHEDULED WATER CLOSET (WC-1).
- 3 PROPERLY INSTALL NEW URINAL (UR-1) WITH NEW FLUSH VALVE WITH CONNECTION TO EXISTING CU PLUMB LEVEL, SUPPORT AND ANCHOR.
- 4 PROVIDE NEW 1/2" CU SUPPLY PIPING TO NEWLY SCHEDULED DRINK STATION. PROVIDE 1/2" CW PIPING THROUGH WALL TO NEW BRANCH PIPING AT SINK OPPOSITE SIDE OF WALL - SEE ISOMETRICS.
- 5 PROVIDE NEW 1/2" CU SUPPLY PIPING TO NEWLY SCHEDULED WALL BOX FROM EXISTING CU SUPPLY AT THE DEMOLITION OF RESTROOM. CONNECT DOWNSTREAM OF LOCAL ISOLATION VALVES - SEE ISOMETRICS.
- 6 PROVIDE NEW 1/2" CU/HW PIPING DOWNSTREAM OF LOCAL EXISTING ISOLATION VALVES SERVING DEMOLITION OF RESTROOM FOR NEW SINK (S-1) TO NEWLY PROPOSED KITCHENETTE LOCATION - SEE ISO PLAN.
- 7 INSTALL KITCHENETTE SINK PROPERLY & CONNECT EXISTING CU/HW SUPPLY AND DRAIN PIPING TO EXISTING SANITARY.
- 8 CONNECT NEW 2" VENT TO NEAREST VENT SYSTEM.
- 9 NEW 3" SANITARY TO WC-1, NEW 2" SANITARY TO LAVATORY AND NEW 2" VENT FOR NEW TOILET ROOM. CONNECTIONS ON SANITARY & WATER SHALL BE TO THE EXISTING FIELD EXISTING SANITARY LATERAL PRIOR TO TRENCHING.
- 10 NEW 3" SANITARY TO MOP SINK AND NEW 2" VENT TO EXISTING COLLECTION (MANIFOLD) TO EXISTING V.T.R. FIELD DETERMINE BEST ROUTING & FIELD VERIFY SANITARY LATERAL PRIOR TO TRENCHING.

### GENERAL NOTES:

- 1 FOR ABBREVIATIONS, SYMBOLS, LEGEND, AND GENERAL NOTES, REFER TO SHEET M201.
- 2 COORDINATE EQUIPMENT INSTALLATION AND LOCATION WITH MANUFACTURER REQUIREMENTS PRIOR TO BIDDING AND CONSTRUCTION.
- 3 THE PROJECTS MECHANICAL DRAWINGS AND SPECIFICATIONS MAKE NO PROVISION(S) FOR THE DIVISION OF GC/SUBCONTRACTOR WORK SCOPE(S). THE GENERAL CONTRACTOR SHALL ENSURE ALL HIS/HER SUBCONTRACTORS HAVE NECESSARY PROVISIONS FOR THE COMPLETE, FUNCTIONING AND WARRANTED WITHOUT EXCEPTION. CONTRACTOR SHALL INCLUDE SUCH PROVISIONS IN HIS/HER BASE BID.
- 4 GENERAL CONTRACTOR AND HIS/HER SUB-CONTRACTOR(S) SHALL CAREFULLY COORDINATE ALL SPRINKLER LINE INSTALLATIONS WITH THE PROJECTS MECHANICAL AND PLUMBING SYSTEMS PRIOR TO INSTALLATIONS. SPRINKLER LINES TO BE DETERMINED TO BE IN CONFLICT WITH THE PROJECTS MECHANICAL DRAWINGS WILL BE REQUIRED TO BE RELOCATED AT NO ADDITIONAL COST TO THE OWNER OR ARCHITECT, WITHOUT EXCEPTION.



1 PARTIAL FIRST FLOOR PLUMBING PLAN  
SCALE: 1/4" = 1'-0" NORTH

**BESSOLO**  
DESIGN GROUP, INC.  
ARCHITECTURE ■ DEVELOPMENT  
License #AA-C002117  
7901 4TH ST. NORTH, SUITE 200  
ST. PETERSBURG, FL 33702  
727 894-4453 www.bessolo.com

**KEM**  
ENGINEERS, INC.  
License # EB-0007103  
7901 4TH ST. NORTH, SUITE 200  
ST. PETERSBURG, FL 33702  
727 894-4668  
PROFESSIONAL SEAL  
  
Gregory M. Clements, P.E.  
State of Florida 62375

**BARBEE TOWERS**  
**RENOVATION**  
1100 E DRUID ROAD  
CLEARWATER, FL 33756

ISSUED  
DATE: 08-15-20  
ISSUED FOR: CONSTRUCTION DOCUMENTS

REVISIONS		
NO.	DATE	DESCRIPTION

PROJECT NO: 190719.00  
DRAWN BY: TLJ  
PROJECT MANAGER: RW  
CHECKED BY: GMC  
DATE: 08-15-20  
SCALE: 1/4" = 1'-0"

**P101**  
PARTIAL FIRST FLOOR  
PLUMBING PLAN

REVISIONS		
NO.	DATE	DESCRIPTION

PROJECT NO.:	19079.00
DRAWN BY:	TLJ
PROJECT MANAGER:	RW
CHECKED BY:	GMC
DATE:	09-15-20
SCALE:	NOT TO SCALE

**GENERAL NOTES:**

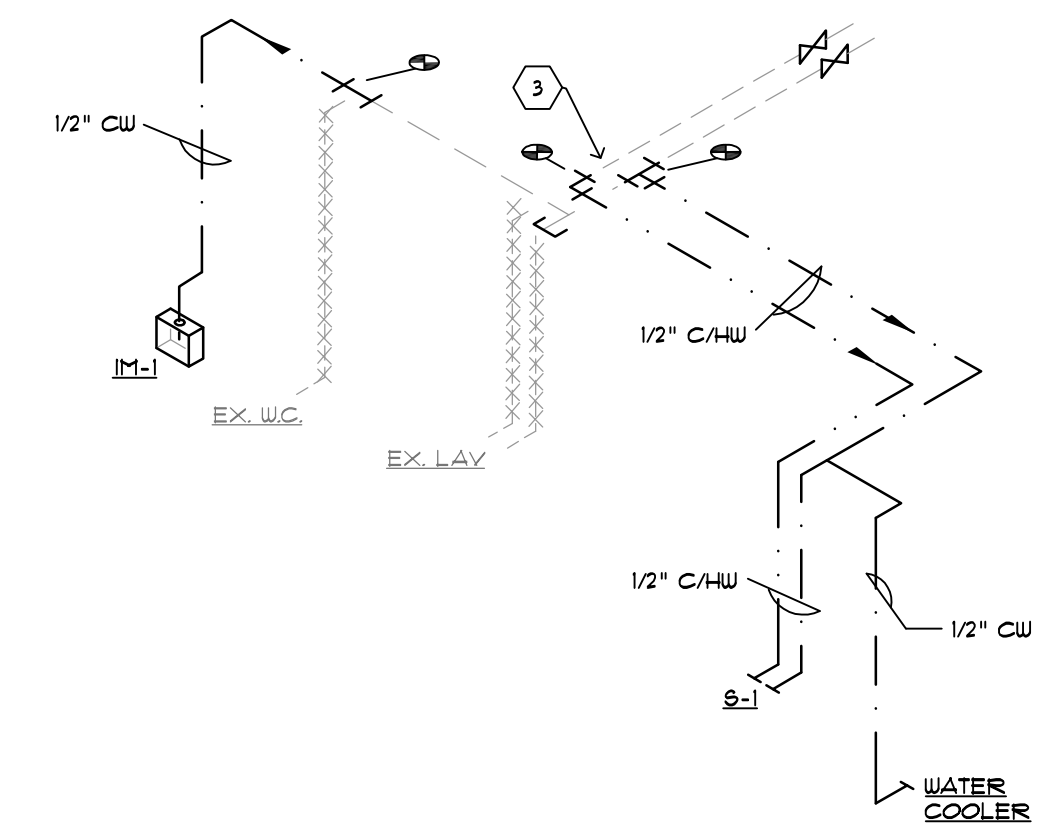
- FOR ABBREVIATION, SYMBOLS, LEGEND AND GENERAL NOTES SEE DRAWING P1001.
- PIPING TO RUN IN CEILING SPACE FOR DOMESTIC WATER AND CONCEALED SANITARY VENTS.

**KEY NOTES:**

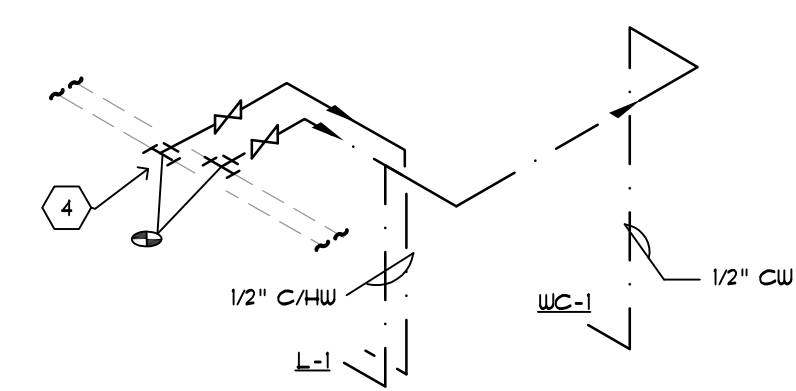
- NEW FIXTURE AS SCHEDULE - PROVIDE NEW SANITARY & WATER SUPPLY PIPING.
- PROPERLY DECOMMISSION EXISTING SANITARY FLOOR CONNECTION TO PERMANENTLY REMOVED WATER CLOSET
- NEW WATER 1/2" CW/HW SUPPLY CONNECTION TO EXISTING CW/HW SUPPLY SERVICE TO REMOVED RESTROOM GROUP.
- NEW WATER 1/2" CW/HW SUPPLY CONNECTION TO EXISTING CW/HW SUPPLY. FIELD VERIFY PROPER SUPPLY MAIN. PROVIDE NEW ISOLATION VALVES FOR NEW BRANCH PIPING.
- PROPERLY CONNECT 1/2" CW PIPING FROM (WB-1) TO EXISTING CW SUPPLY.
- FIT, ANCHOR AND CONNECT ALL PLUMBING TO NEWLY PROPOSED (S-1) AT KITCHEN (RIGHT SIDE) PLAN VIEW.

**PLUMBING LINE TYPES**

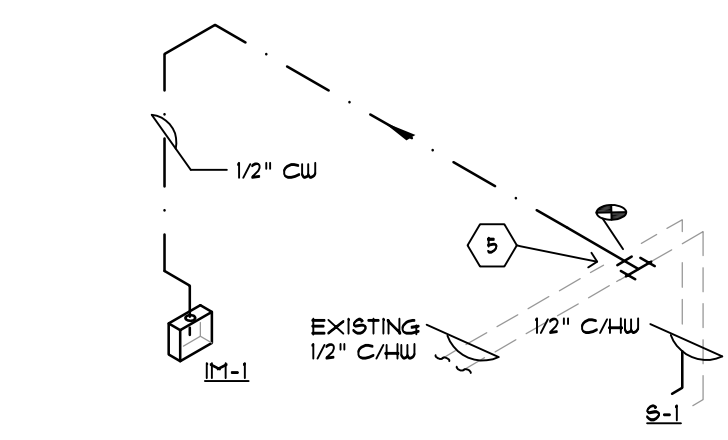
- EXISTING SAN. PIPING TO REMAIN
- - - EXISTING VENT PIPING TO REMAIN
- - - EXISTING WATER PIPING TO REMAIN
- XXXXXXXXXXXXXXXX EXISTING PIPING TO BE REMOVED
- NEW SANITARY PIPING
- - - NEW COLD WATER PIPING
- - - NEW HOT WATER PIPING (110 DEG.)



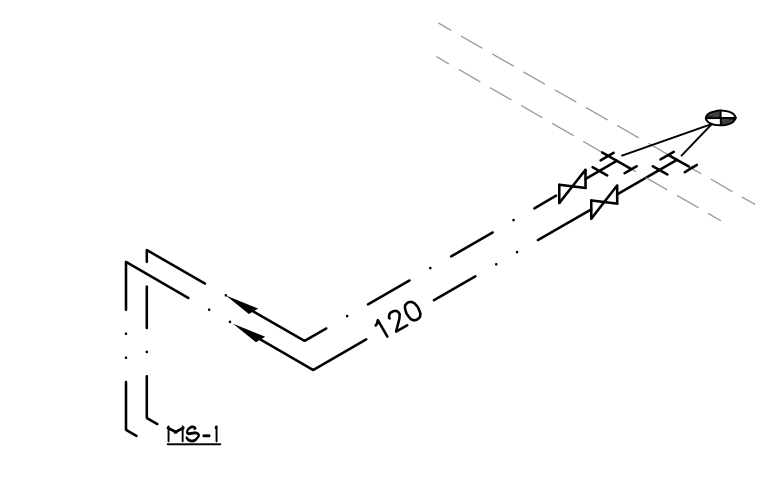
**U1** LEFT SIDE KITCHENETTE DOMESTIC WATER ISOMETRIC  
 SCALE: NOT TO SCALE



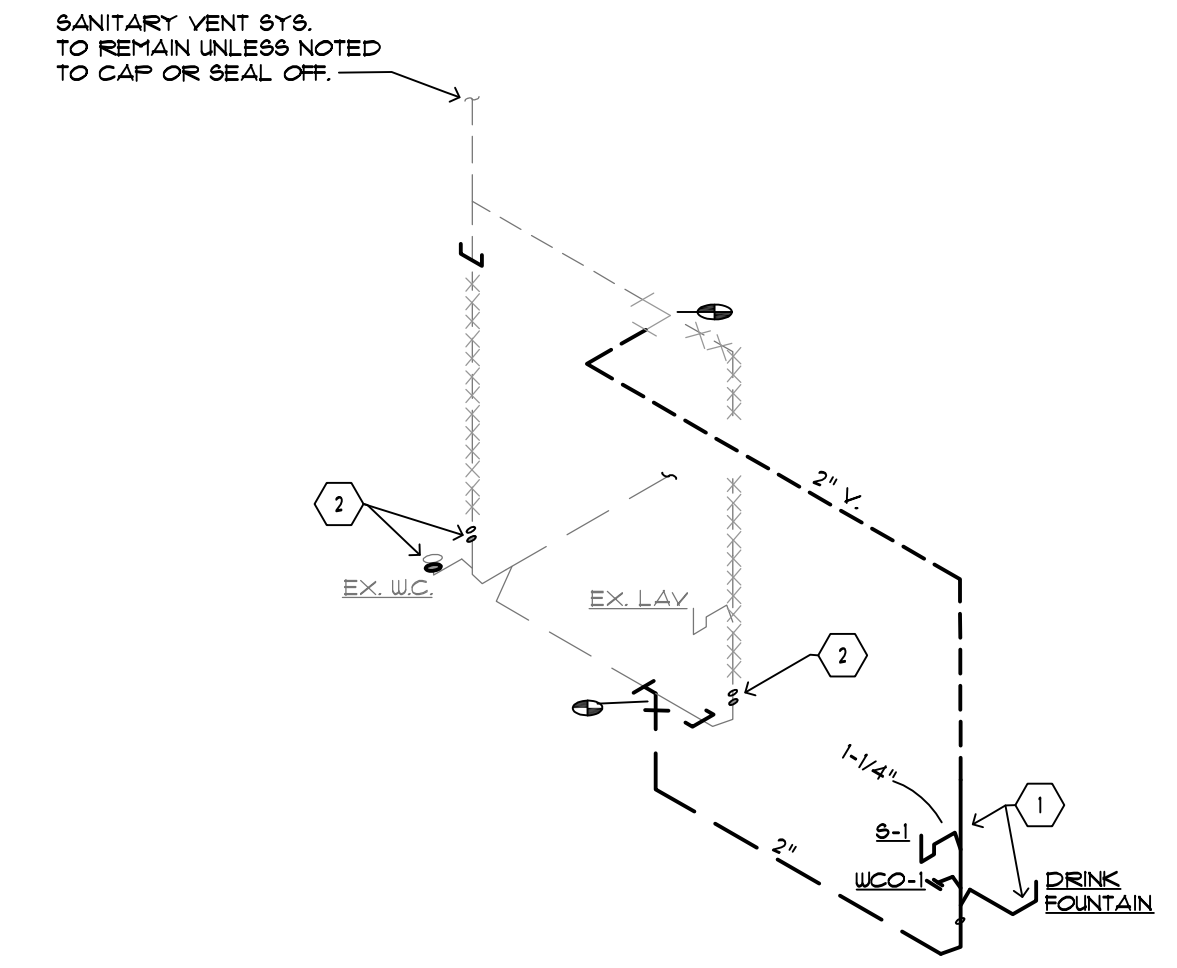
**U2** RIGHT SIDE RESTROOM DOMESTIC WATER ISOMETRIC  
 SCALE: NOT TO SCALE



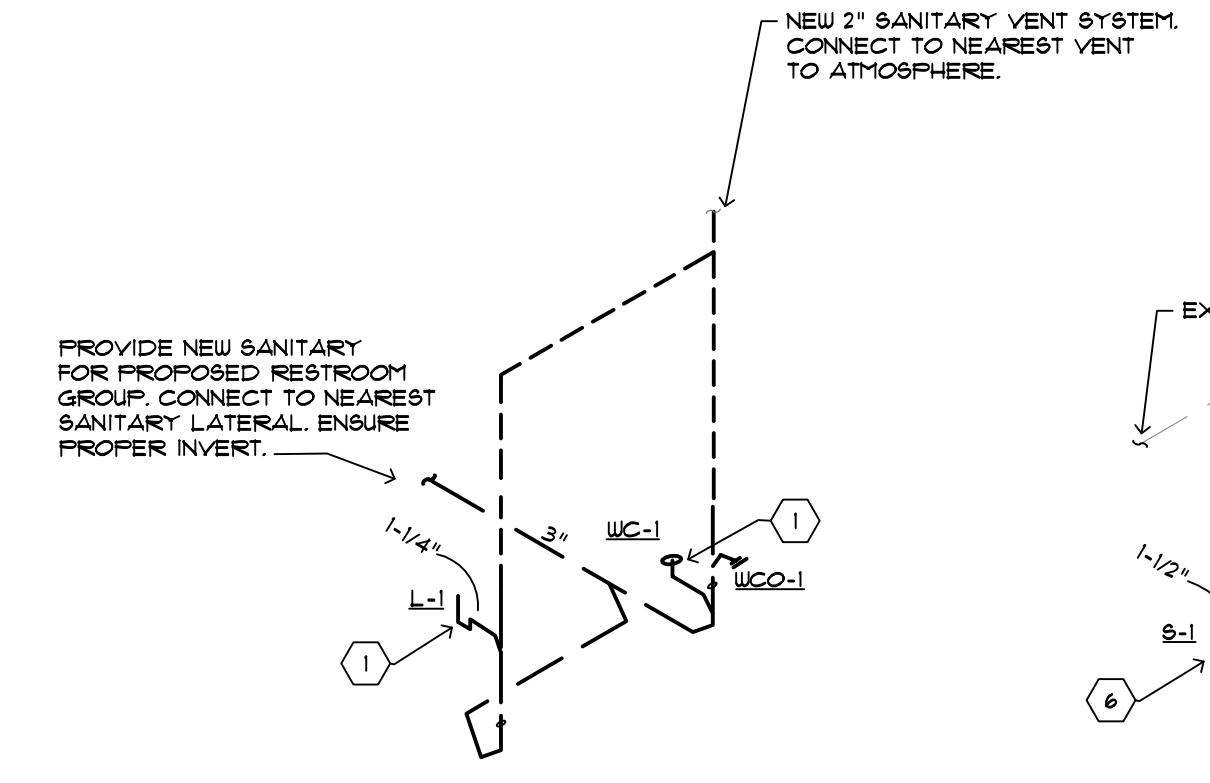
**U3** RIGHT SIDE REFRIGERATOR DOMESTIC WATER ISOMETRIC  
 SCALE: NOT TO SCALE



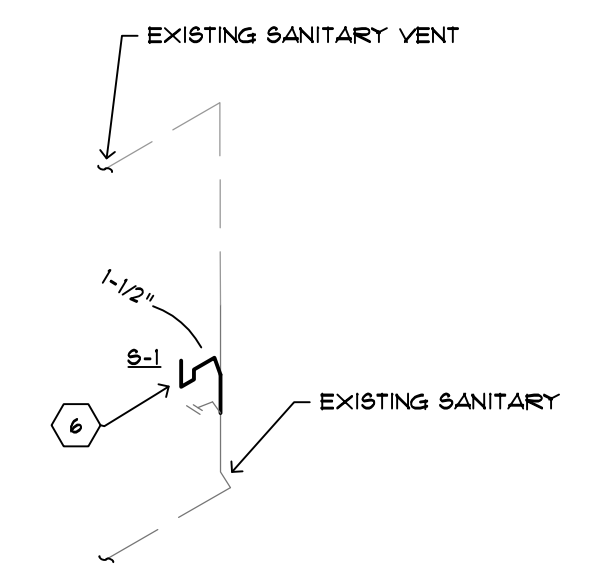
**U4** JANITOR CLOSET DOMESTIC WATER ISOMETRIC  
 SCALE: NOT TO SCALE



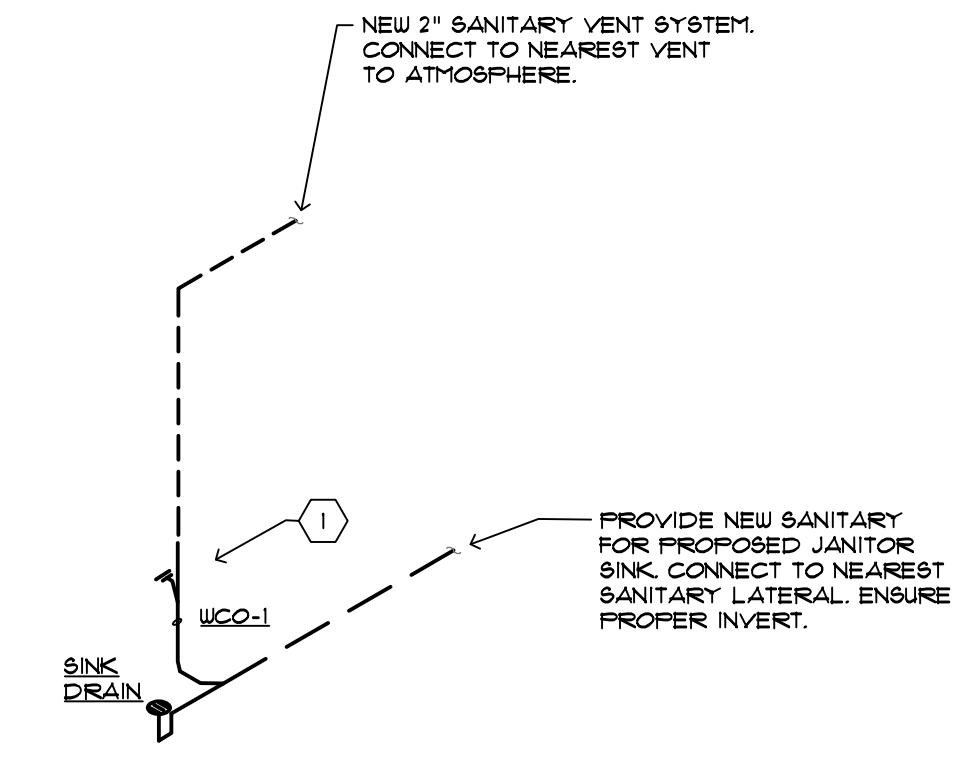
**S1** LEFT SIDE KITCHEN SANITARY ISOMETRIC  
 SCALE: NOT TO SCALE



**S2** RIGHT SIDE RESTROOM & KITCHEN SANITARY ISOMETRIC  
 SCALE: NOT TO SCALE

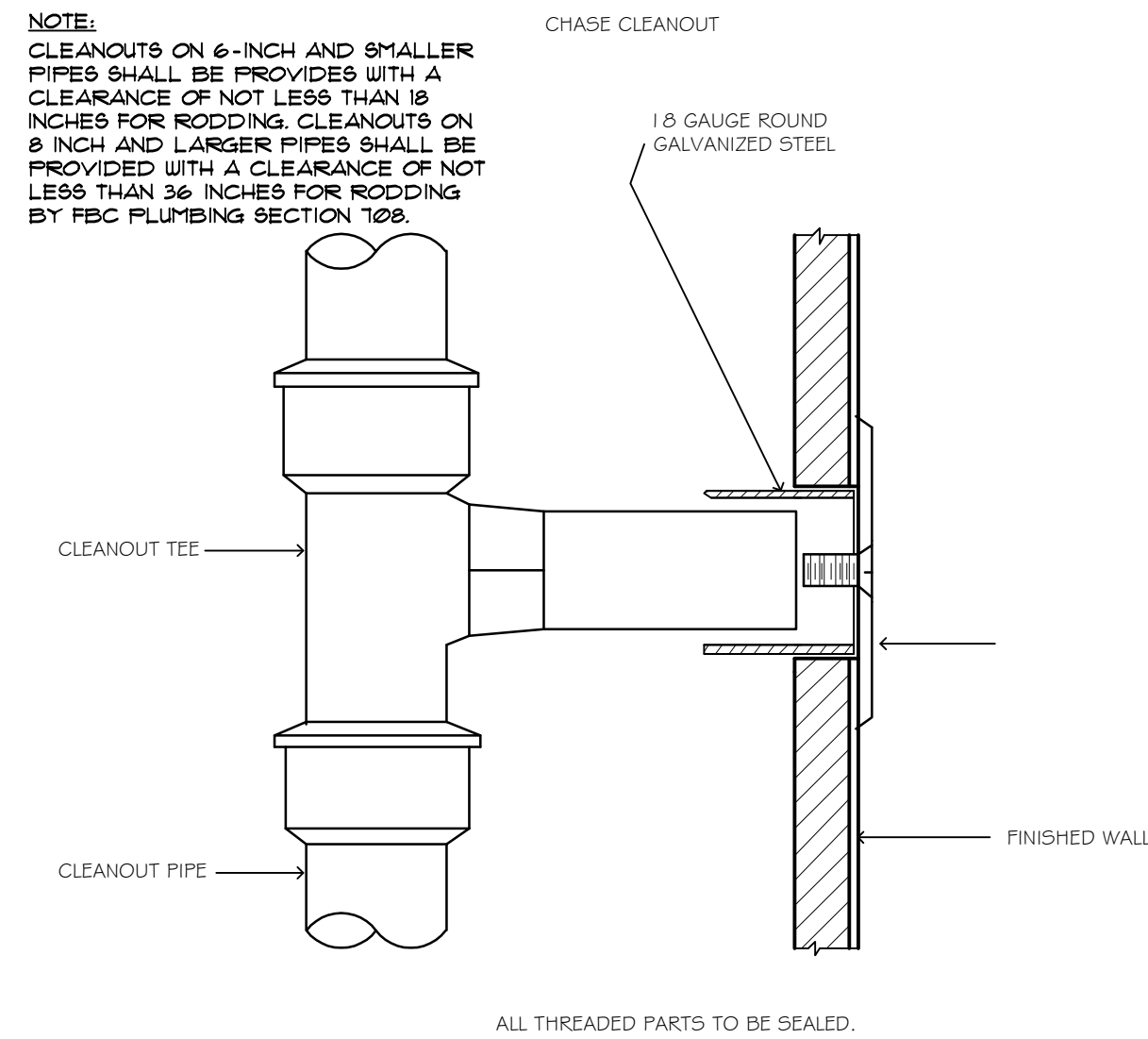


**S3** RIGHT SIDE KITCHEN SANITARY ISOMETRIC  
 SCALE: NOT TO SCALE



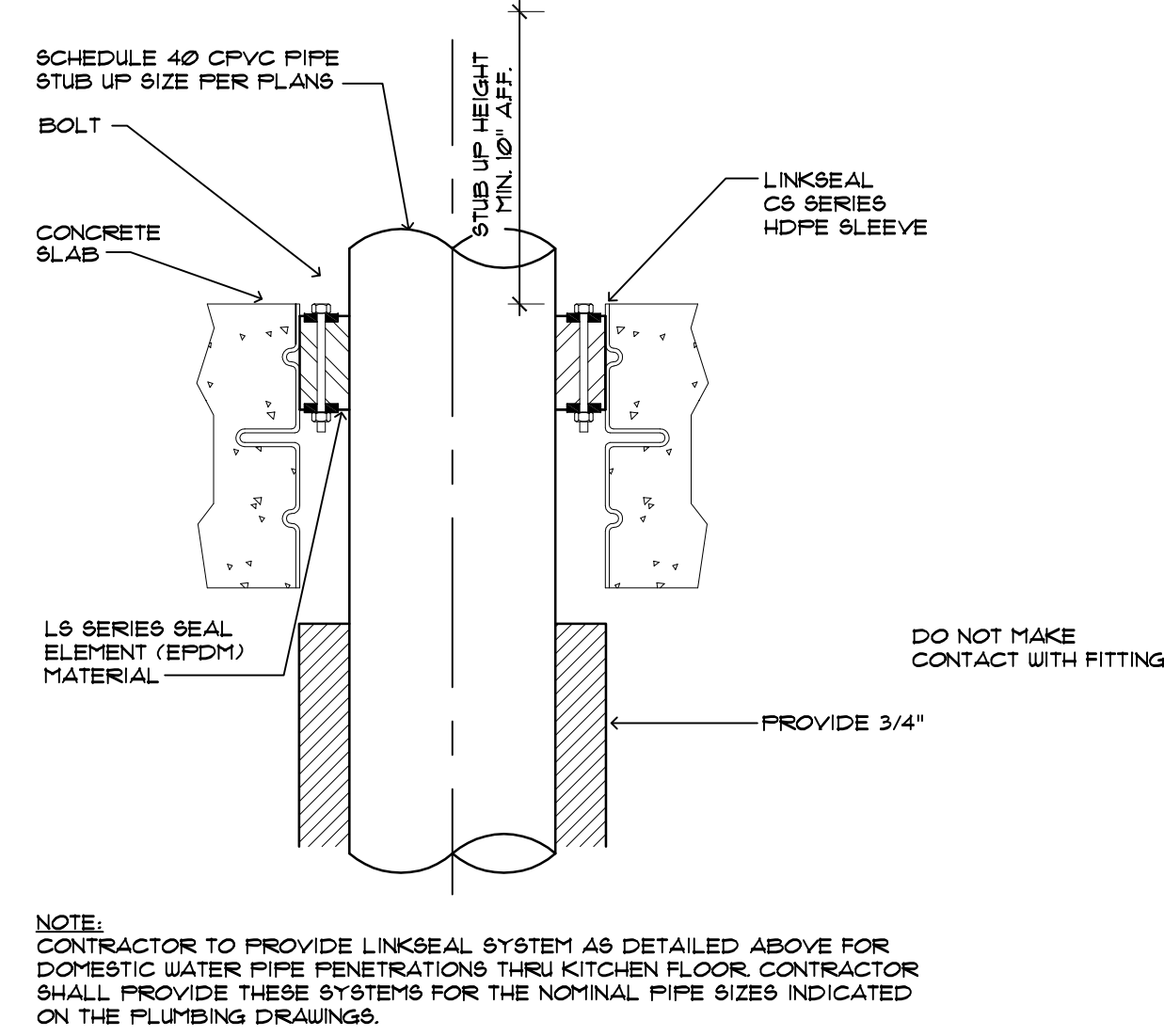
**S4** JANITOR SINK SANITARY ISOMETRIC  
 SCALE: NOT TO SCALE





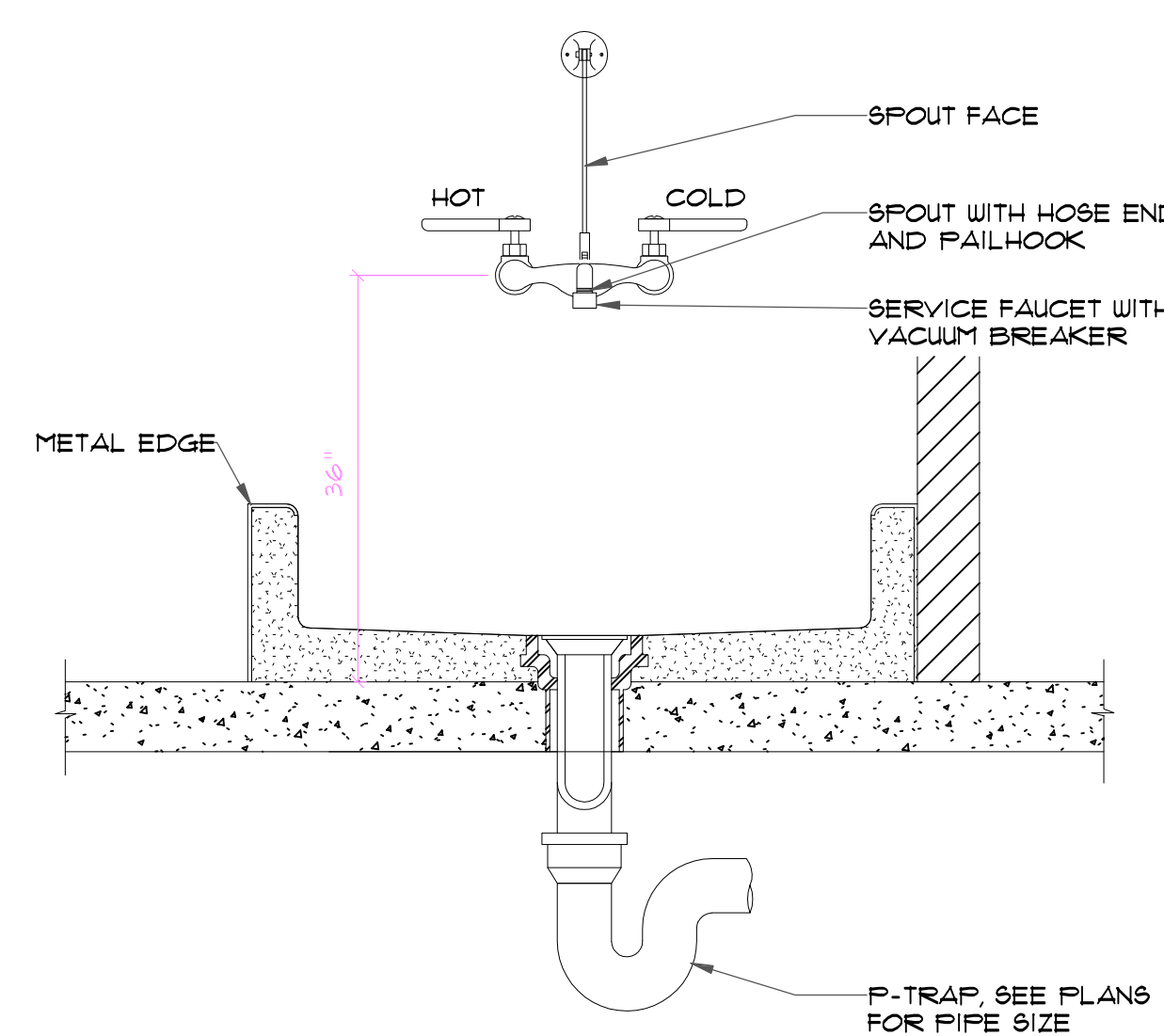
**1 WALL CLEANOUT DETAIL**

SCALE: NOT TO SCALE



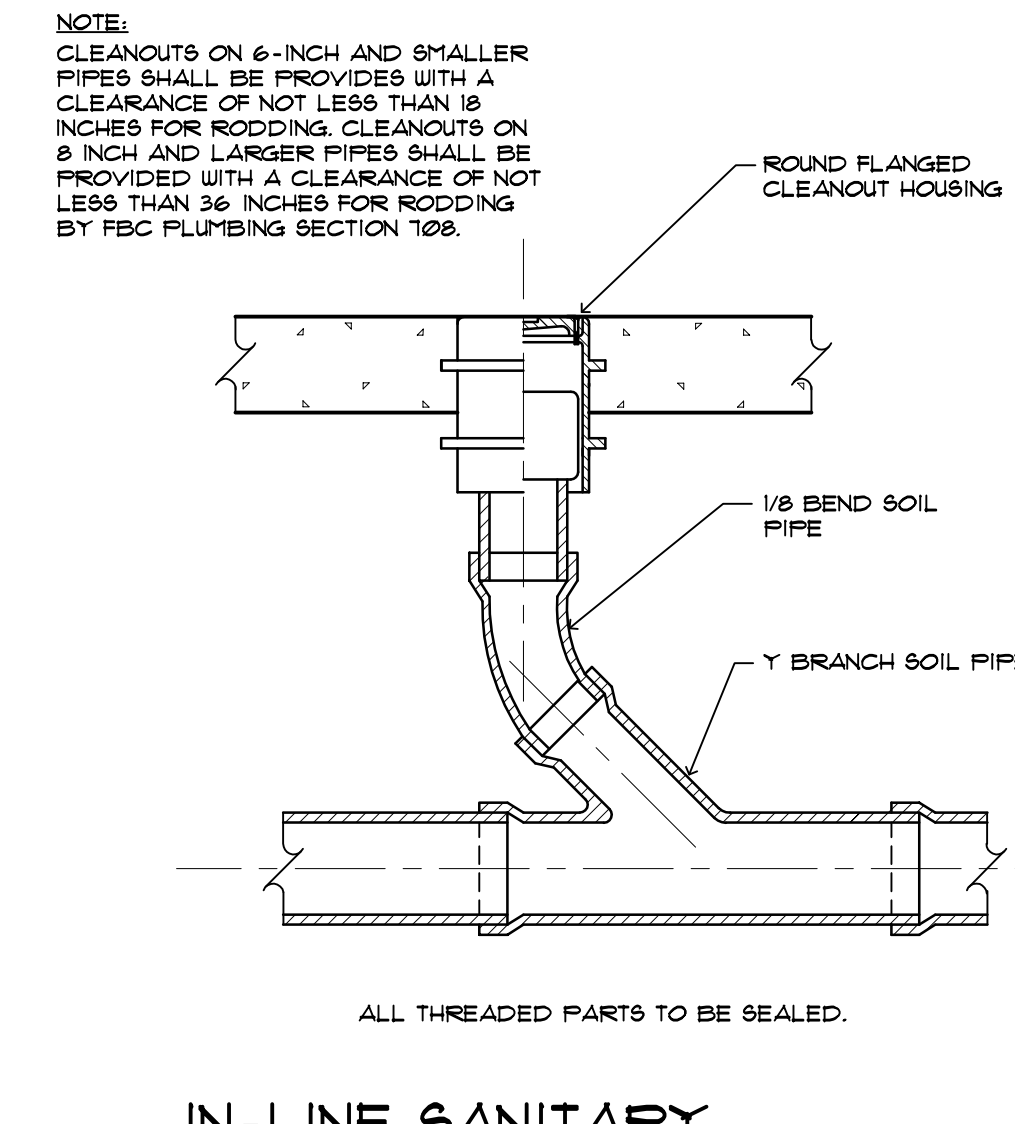
**2 PIPING FLOOR PENETRATION**

SCALE: NOT TO SCALE



**3 MOP SINK**

SCALE: NOT TO SCALE



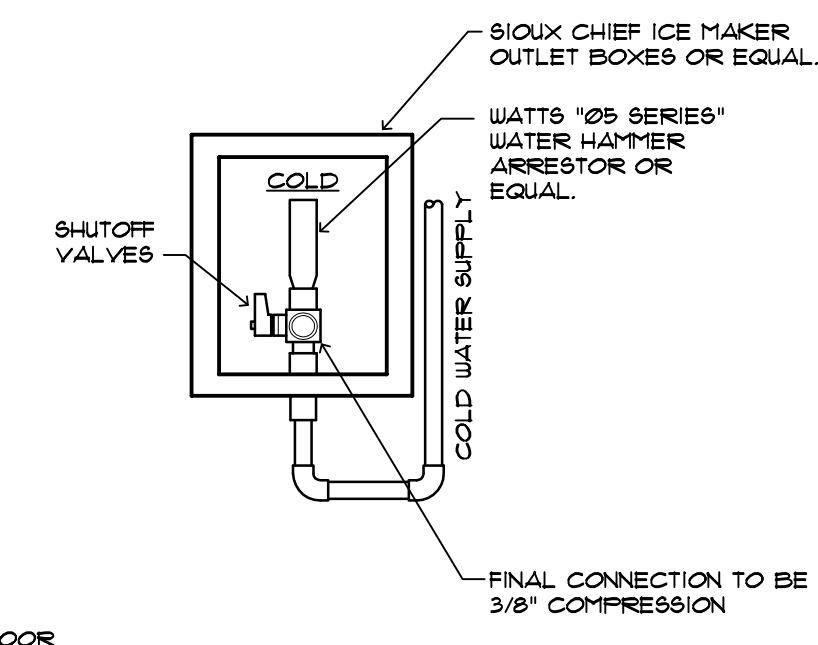
**4 IN-LINE SANITARY CLEANOUT FLOOR SLAB**

SCALE: NOT TO SCALE

ALL THREADED PARTS TO BE SEALED.

ALL THREADED PARTS TO BE SEALED.

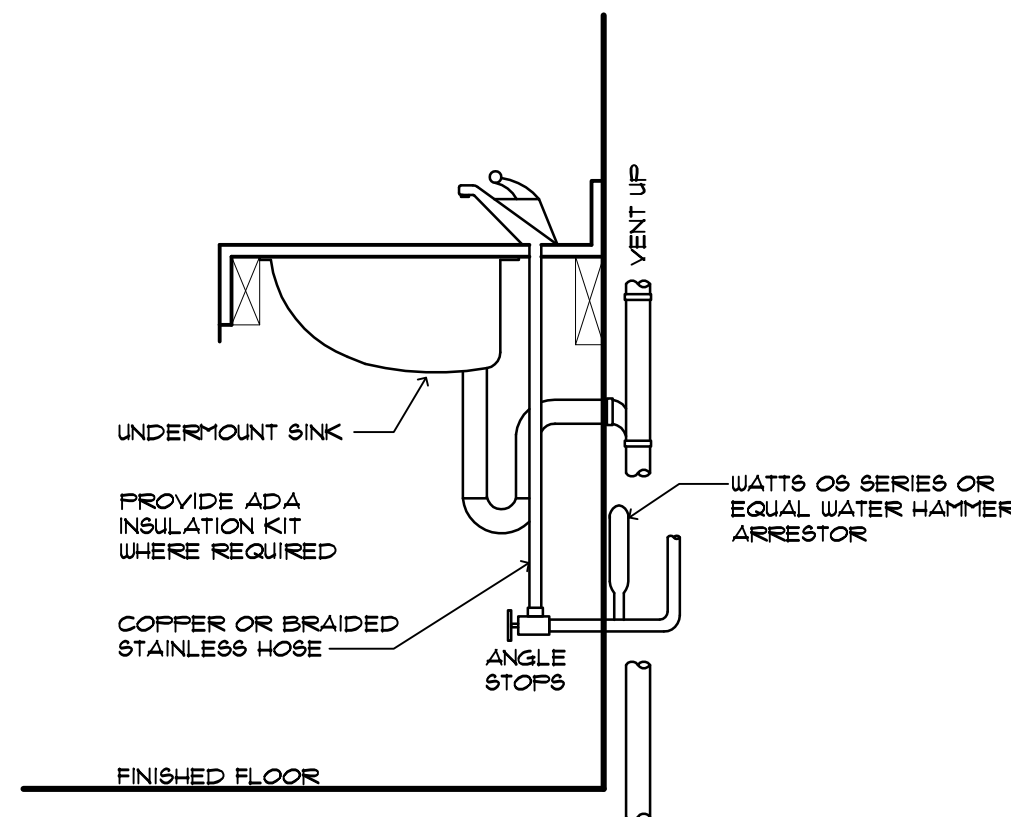
KEM ENGINEERS, INC



**5 TYPICAL ICE MAKER WATER BOX CONNECTION**

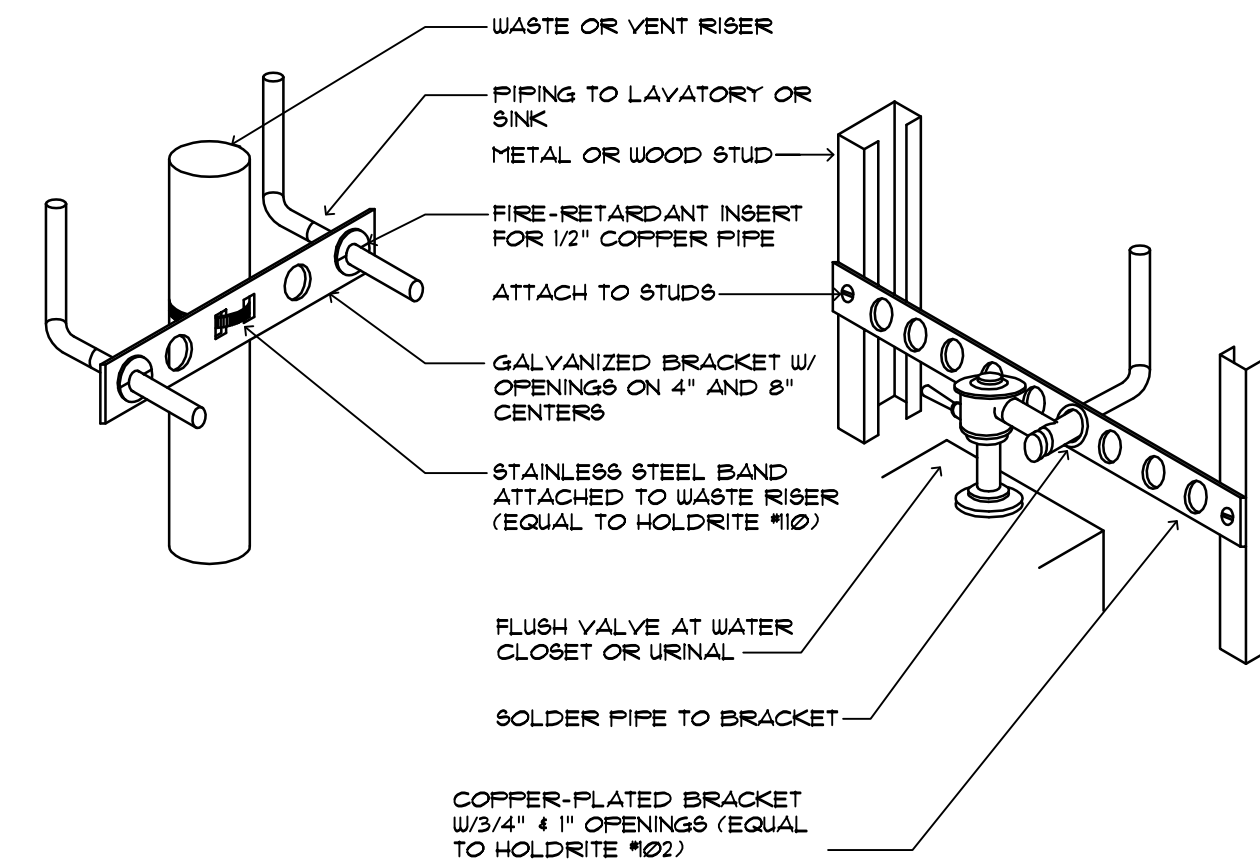
SCALE: NOT TO SCALE

DATE: 08-2015  
CHECKED BY:



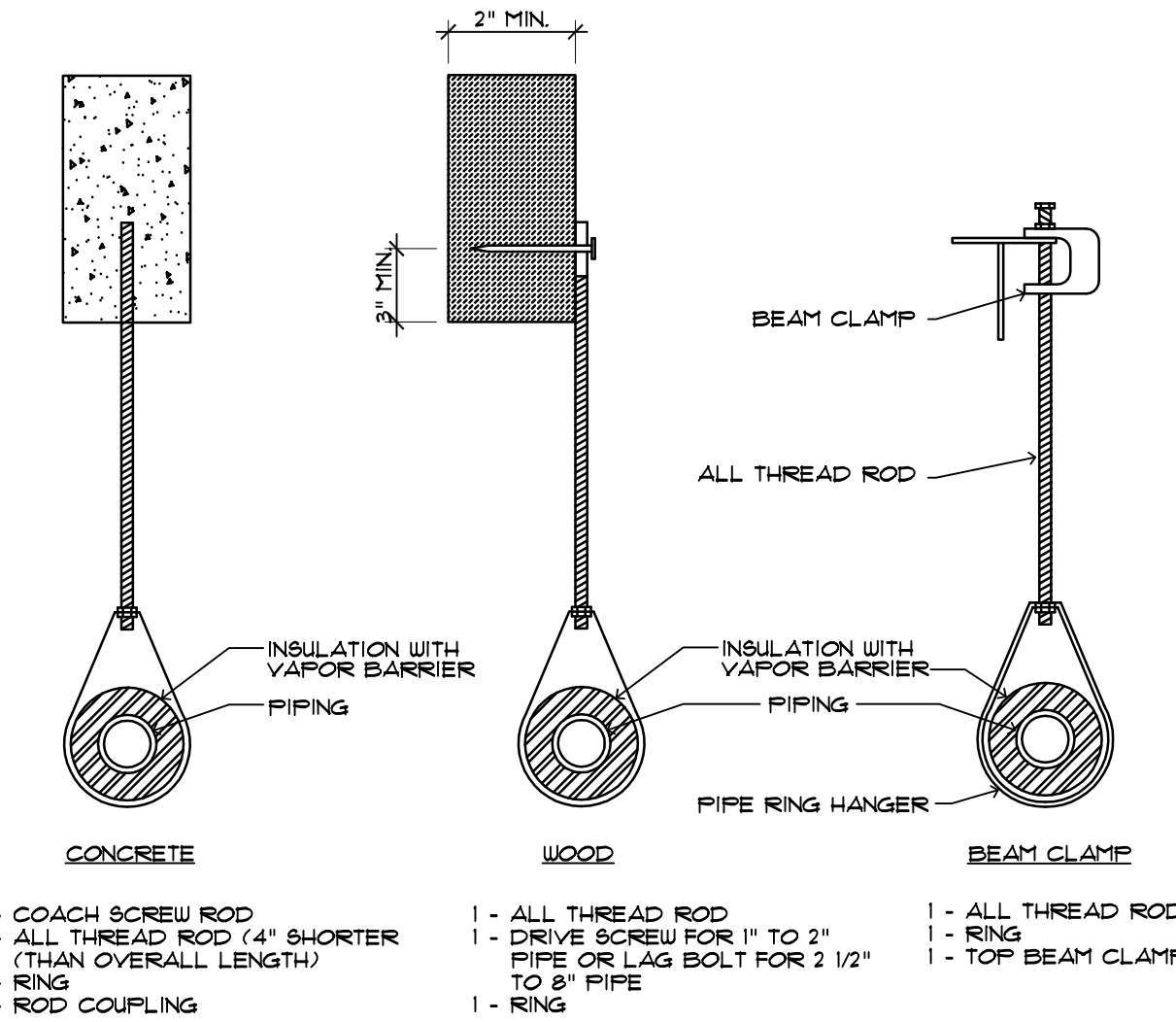
**6 TYPICAL LAVATORY/KITCH. SINK**

SCALE: NOT TO SCALE



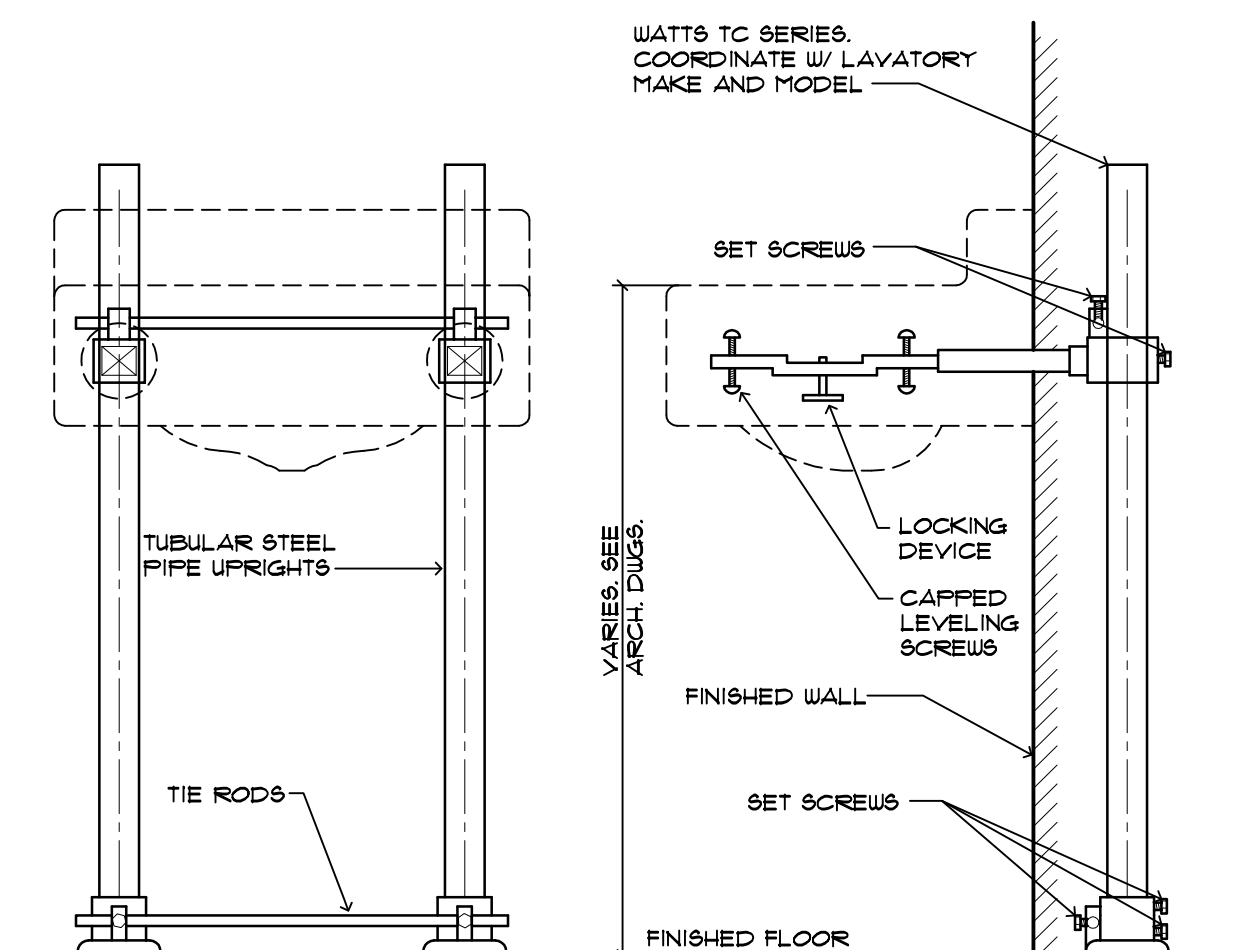
**7 WATER PIPING SUPPORT**

SCALE: NOT TO SCALE



**8 PIPE HANGER**

SCALE: NOT TO SCALE



**9 LAVATORY CARRIER**

SCALE: NOT TO SCALE

**BESSOLO**  
DESIGN GROUP, INC.  
ARCHITECTURE ■ DEVELOPMENT  
License #AA-C002117  
7901 4TH ST. NORTH, SUITE 200  
ST. PETERSBURG, FL 33702  
727 894-4453 ■ www.bessolo.com

**KEM**  
ENGINEERS, INC  
License # EB-0007103  
7901 4TH ST. NORTH, SUITE 200  
ST. PETERSBURG, FL 33702  
(727) 894-4668  
PROFESSIONAL SEAL  
Gregory M. Clements, P.E.  
State of Florida 62373  
COPYRIGHT KEM ENGINEERS, INC. THE DRAWING AND ALL INFORMATION CONTAINED HEREIN IS THE PROPERTY OF KEM ENGINEERS, INC. NO PART OF THIS DRAWING OR INFORMATION MAY BE REPRODUCED OR TRANSMITTED IN ANY FORM OR BY ANY MEANS, ELECTRONIC OR MECHANICAL, INCLUDING PHOTOCOPYING, RECORDING, OR BY ANY INFORMATION STORAGE AND RETRIEVAL SYSTEM, WITHOUT THE WRITTEN PERMISSION OF KEM ENGINEERS, INC. THE SCALE OF DIMENSIONS SHOWN ON THIS DRAWING IS AS NOTED. DIMENSIONS NOT SHOWN SHALL BE AS SHOWN ON THE DRAWING. THE CONTRACTOR SHALL BE RESPONSIBLE FOR VERIFYING ALL DIMENSIONS AND CONDITIONS OF THE WORK BEFORE BEGINNING WORK. THE CONTRACTOR SHALL BE RESPONSIBLE FOR OBTAINING ALL NECESSARY PERMITS AND APPROVALS FROM THE APPLICABLE AGENCIES. THE CONTRACTOR SHALL BE RESPONSIBLE FOR OBTAINING ALL NECESSARY APPROVALS FROM THE APPLICABLE AGENCIES. THE CONTRACTOR SHALL BE RESPONSIBLE FOR OBTAINING ALL NECESSARY APPROVALS FROM THE APPLICABLE AGENCIES. THE CONTRACTOR SHALL BE RESPONSIBLE FOR OBTAINING ALL NECESSARY APPROVALS FROM THE APPLICABLE AGENCIES.

**BARBEE TOWERS**  
**RENOVATION**  
1100 E DRUID ROAD  
CLEARWATER, FL 33756

ISSUED  
DATE: 08-15-2015  
ISSUED FOR: CONSTRUCTION DOCUMENTS

REVISIONS		
NO.	DATE	DESCRIPTION

PROJECT NO: 19079.00  
DRAWN BY: TLJ  
PROJECT MANAGER: RW  
CHECKED BY: GMC  
DATE: 08-15-2015  
SCALE: NOT TO SCALE

**P601**  
PLUMBING DETAILS

