

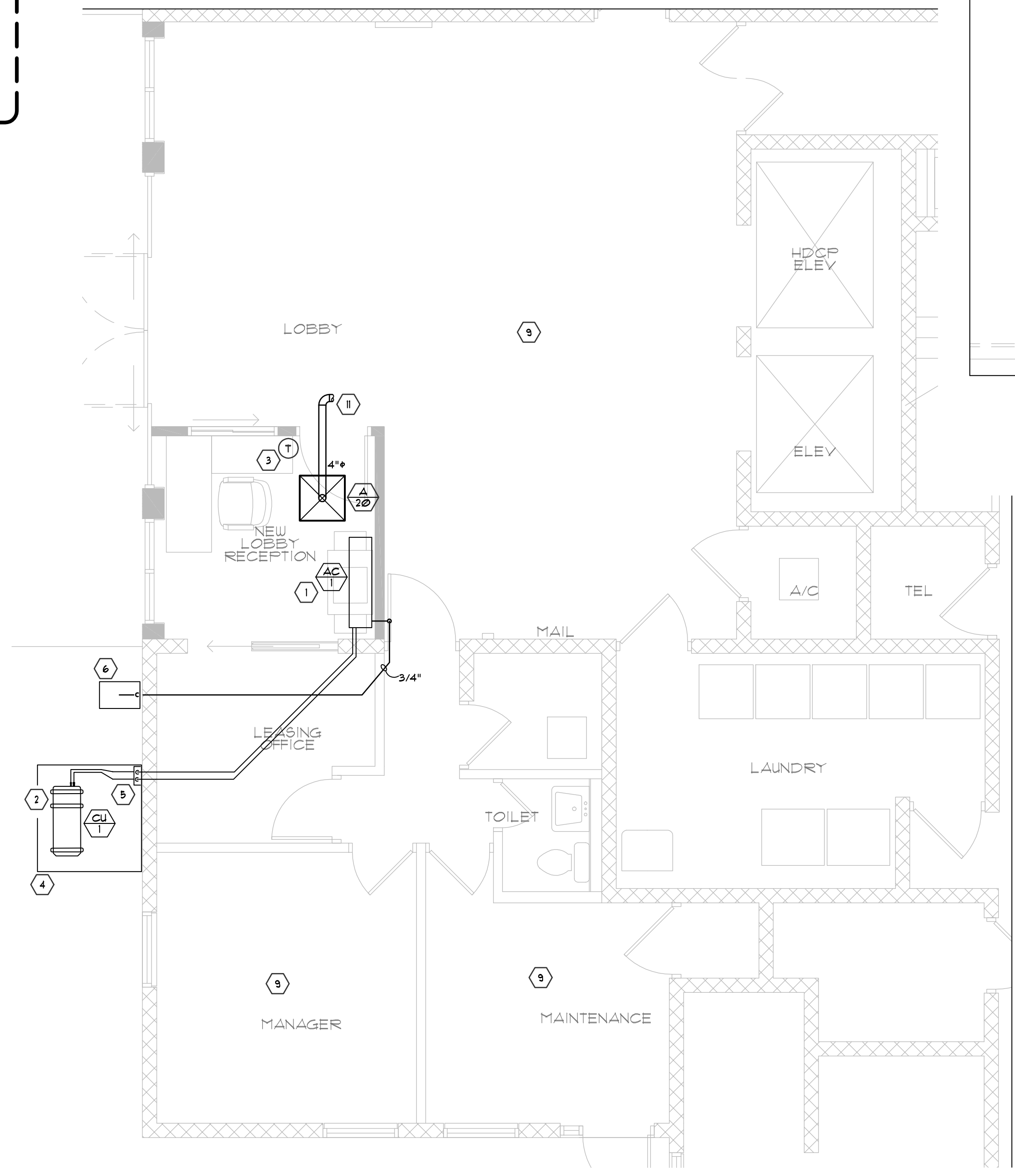
1 OVERALL FIRST FLOOR PLAN
SCALE: 1/8" = 1'-0"

GENERAL NOTES:

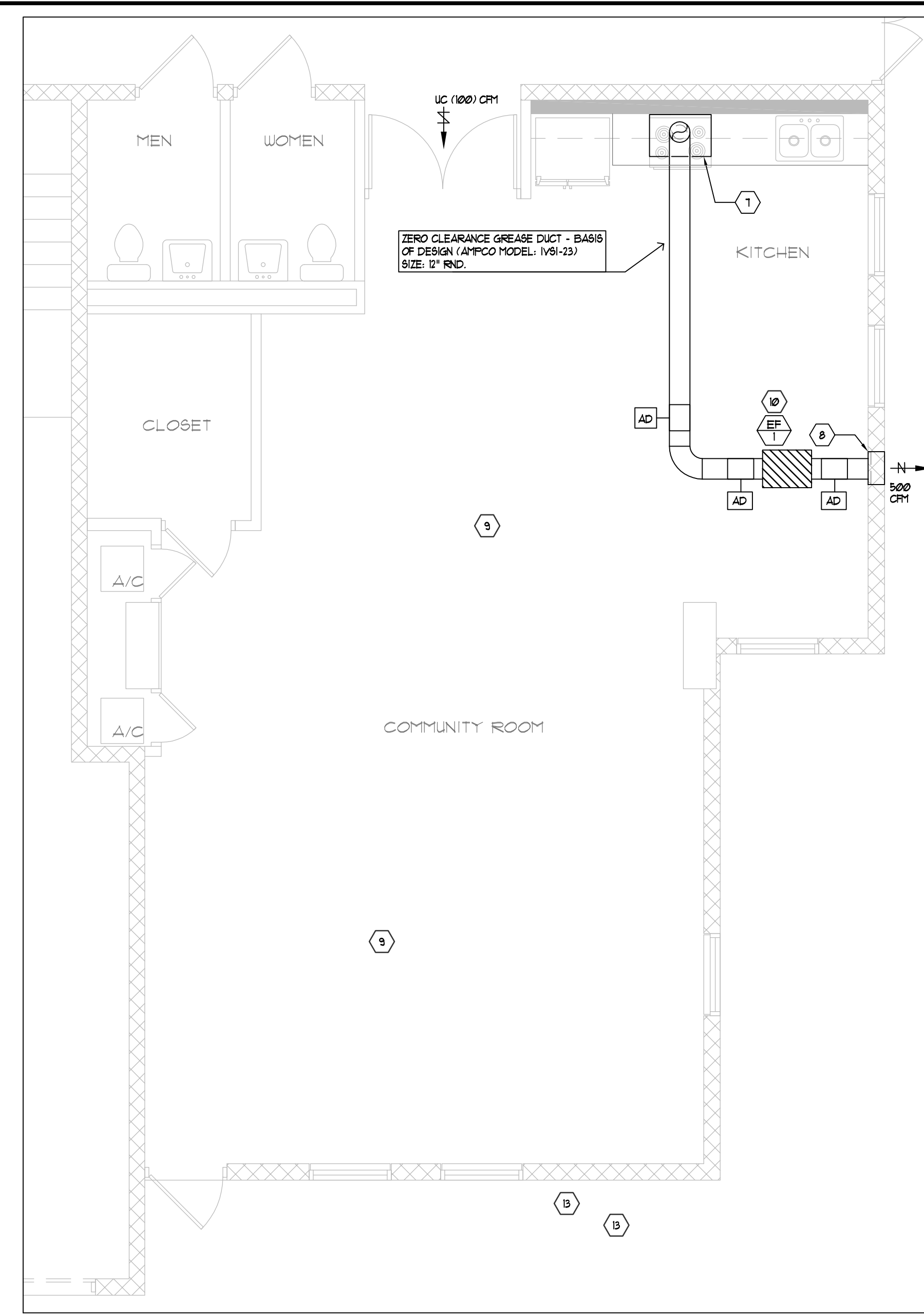
- FOR ABBREVIATIONS, SYMBOLS, LEGEND, AND GENERAL NOTES, REFER TO SHEET M101.
- COORDINATE EQUIPMENT INSTALLATION AND LOCATION WITH MANUFACTURER REQUIREMENTS PRIOR TO BIDDING AND CONSTRUCTION.
- INSTALL FIRE DAMPERS OR FIRE/SMOKE DAMPERS AT ALL DUCT PENETRATIONS THROUGH FIRE WALLS OR FIRE/SMOKE WALLS RESPECTIVELY. COORDINATE EXACT LOCATION PRIOR TO INSTALLATION.
- SMOKE DETECTORS FOR AIR HANDLING AND ROOFTOP UNITS SHALL PROVIDE AUTOMATIC FAN SHUTDOWN FOR UNIT AND PROVIDE A SUPERVISORY SIGNAL TO THE BUILDING FIRE ALARM SYSTEM. UPON BUILDING GENERAL ALARM, ALL AIR HANDLING UNITS (EXCEPT WITHIN RESIDENTIAL UNITS) SHALL SHUT DOWN.
- PROVIDE A MOTORIZED DAMPER AND VOLUME DAMPER AT ALL OUTSIDE AIR CONNECTIONS TO AHU UNITS INSIDE MECH ROOMS.
- CONTRACTOR SHALL PROVIDE FIRE DAMPERS AT ALL PENETRATIONS OF FIRE-RATED CEILING MEMBRANE INCLUDING ALL MECHANICAL ROOMS.
- THE PROJECT'S MECHANICAL DRAWINGS AND SPECIFICATIONS MAKE NO PROVISION(S) FOR THE DIVISION OF GO-SUN CONTRACTOR WORK SCOPE(S). THE GENERAL CONTRACTOR SHALL ENSURE ALL HIS/HER SUBCONTRACTORS HAVE NECESSARY PROVISIONS FOR THE COMPLETE, FUNCTIONING AND WARRANTED WITHOUT EXCEPTION. CONTRACTOR SHALL INCLUDE SUCH PROVISIONS IN HIS/HER BASE BID.
- GENERAL CONTRACTOR AND HIS/HER SUB CONTRACTOR(S) SHALL CAREFULLY COORDINATE ALL SPRINKLER LINE INSTALLATIONS WITH THE PROJECT'S MECHANICAL AND PLUMBING SYSTEMS PRIOR TO INSTALLATIONS. SPRINKLER LINE TO BE DETERMINED TO BE IN CONFLICT WITH THE PROJECT'S MECHANICAL DRAWINGS WILL BE REQUIRED TO BE RELOCATED AT NO ADDITIONAL COST TO THE OWNER OR ARCHITECT, WITHOUT EXCEPTION.

KEYED NOTES:

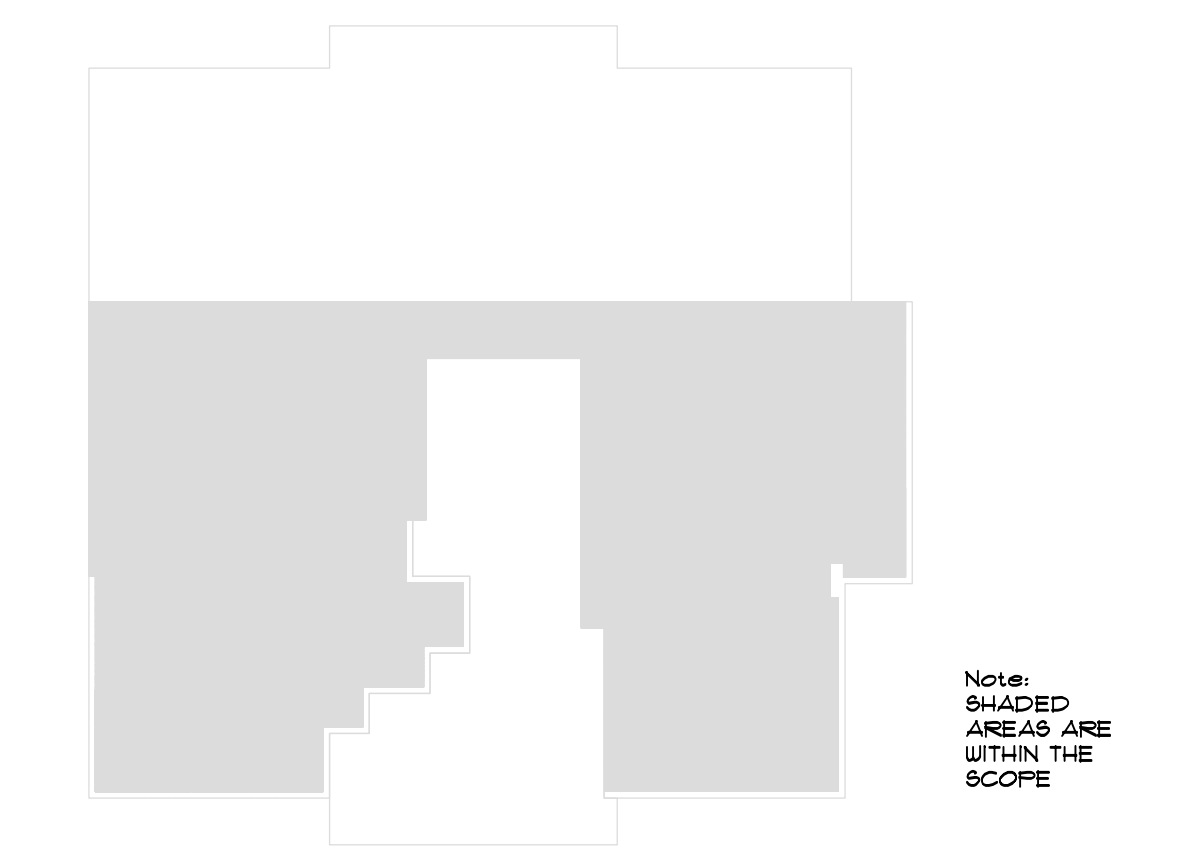
- HIGH WALL INDOOR COOLING FAN SYSTEM. MOUNT AS PER THE MANUFACTURERS SPEC'S. SEE M101 FOR SCHEDULE.
- CONDENSER UNIT AS SCHEDULED. INSTALL AS PER THE MANUFACTURERS SPEC'S. SEE M101 FOR SCHEDULE.
- PROVIDE WALL MOUNTED PROGRAMMABLE T-STAT, MOUNTED AT 4'-8" AFF.
- PROVIDE 6" CONCRETE PAD MAINTAIN 36" FROM EXTERIOR WALL.
- LINE COVERS AS REQUIRED FOR ALL REFRIGERANT LINES.
- ROUTE 3/4" PVC CONDENSATE PIPING ABOVE CEILING, PENETRATE EXTERIOR WALL AND ROUTE PIPING DOWN TO SPLASH BLOCK.
- INSTALL DENSULAR OVEN/STOVE HOOD AS PER MANUFACTURERS SPECIFICATION. (NFFA-101) COMPLIANT - SEE M101 FOR SCHEDULE.
- PROVIDE AND INSTALL NEW 16X16 BRICK VENT. BASIS OF DESIGN: RUSKIN BV100. COLOR BY ARCHITECT. PROVIDE NEW PENETRATION FOR BRICK VENT. G.C. COORDINATE LOCATION TO PLACE BETWEEN FILLED CELLS (48" O.C.).
- FOR ALL AREA'S OF CEILING RENOVATION WORK, FOR THIS PROJECT (REFER TO ARCHITECTURAL RCP). REMOVE EXISTING GRILLES & DIFFUSERS AND REPLACE WITH NE. OF THE SAME NECK SIZE. BASIS OF DESIGN: PRICE INDUSTRIES, MODEL A8PD WITH WHITE ENAMEL FINISH.
- PROVIDE GREASE RATED INLINE EXHAUST FAN AS SCHEDULED, WITH PROPER MOUNTING, ACCESS AND MANUFACTURERS INSTALLATION REQUIREMENTS.
- PROVIDE NEW LAY-IN DIFFUSER WITH 4" RND 5/4 TAPPED INTO THE EXISTING 5/4 "LOBBY" SYSTEM. OUTDOOR AIRS CONNECT 4" RND. FIRE DUCT OR EQUIVALENT RECT. DUCT. SAME AREA IN THE PROPOSED SHOULD NOT IMPACT EXISTING OUTDOOR AIR VALVES.



2 LOBBY / OFFICE AREA PARTIAL PLAN
SCALE: 1/4" = 1'-0"



3 COMMUNITY ROOM PARTIAL PLAN
SCALE: 1/4" = 1'-0"



LIMITS OF CONSTRUCTION KEY PLAN

BESSOLO
DESIGN GROUP, INC.
ARCHITECTURE ■ DEVELOPMENT
License #AA-C002117
7901 4TH ST. NORTH, SUITE 200
ST. PETERSBURG, FL 33702
727.894.4453 www.bessolo.com

KEM
ENGINEERS, INC.
License # EB-0007103
7901 4TH ST. NORTH, SUITE 200
ST. PETERSBURG, FL 33702
(727) 894-4668
PROFESSIONAL SEAL
Gregory M. Clements, P.E.
State of Florida 67375
COPYRIGHT KEM INDUSTRIES, INC. THE DRAWING AND ALL INFORMATION CONTAINED HEREIN IS THE PROPERTY OF KEM INDUSTRIES, INC. AND IS TO BE USED ONLY FOR THE PROJECT AND SITE SPECIFICALLY IDENTIFIED HEREIN. NO PART OF THIS DRAWING OR INFORMATION MAY BE REPRODUCED OR TRANSMITTED IN ANY FORM OR BY ANY MEANS, ELECTRONIC OR MECHANICAL, INCLUDING PHOTOCOPYING, RECORDING, OR BY ANY INFORMATION STORAGE AND RETRIEVAL SYSTEM, WITHOUT PERMISSION IN WRITING FROM KEM INDUSTRIES, INC. THIS DRAWING IS THE PROPERTY OF KEM INDUSTRIES, INC. AND IS TO BE USED ONLY FOR THE PROJECT AND SITE SPECIFICALLY IDENTIFIED HEREIN. NO PART OF THIS DRAWING OR INFORMATION MAY BE REPRODUCED OR TRANSMITTED IN ANY FORM OR BY ANY MEANS, ELECTRONIC OR MECHANICAL, INCLUDING PHOTOCOPYING, RECORDING, OR BY ANY INFORMATION STORAGE AND RETRIEVAL SYSTEM, WITHOUT PERMISSION IN WRITING FROM KEM INDUSTRIES, INC.

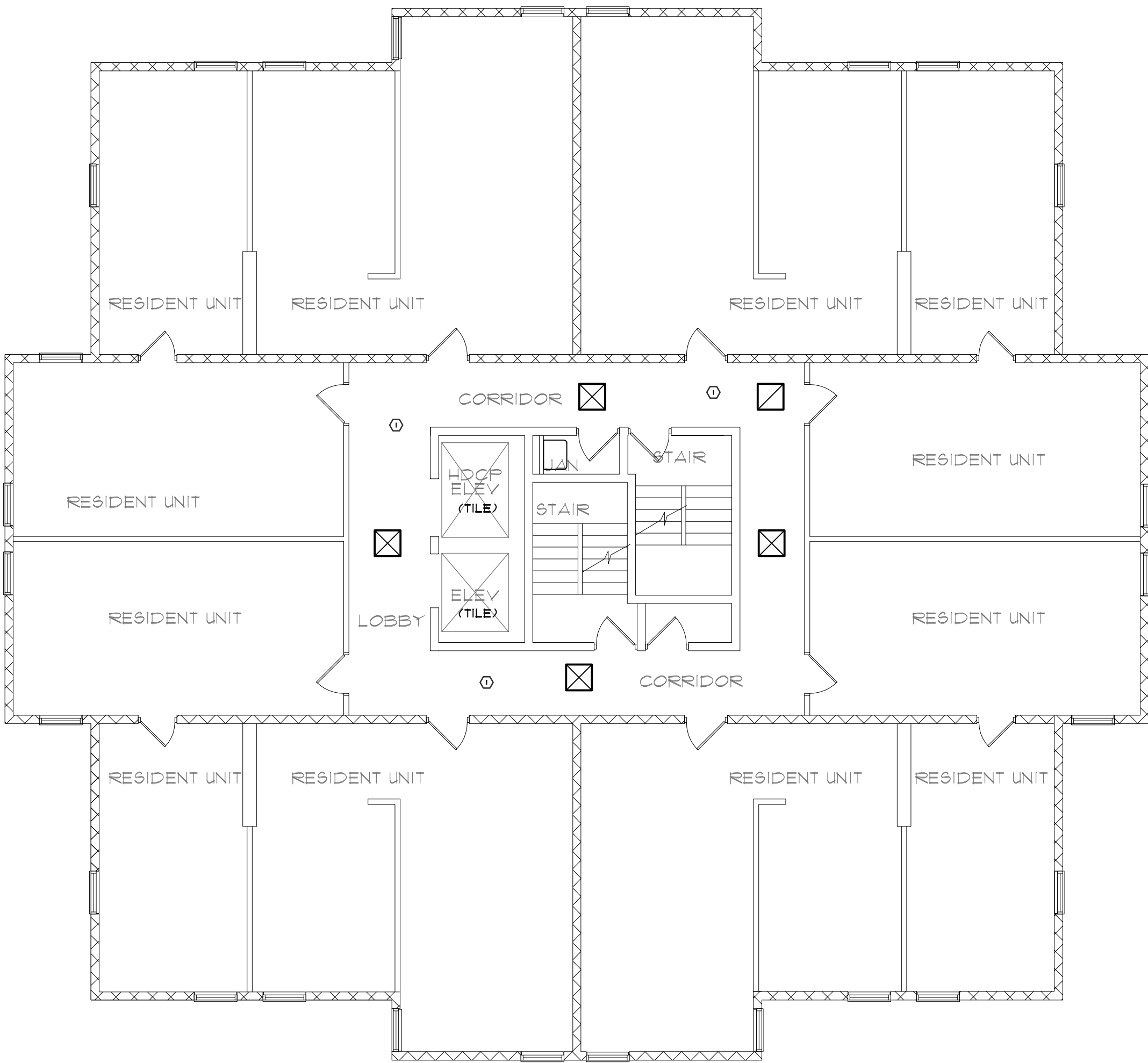
RALPH RICHARDS
TOWER RENOVATION
211 SOUTH PROSPECT AVENUE
CLEARWATER, FL 33756

ISSUED
DATE: 08-15-20
ISSUED FOR: CONSTRUCTION DOCUMENTS

REVISIONS		
NO.	DATE	DESCRIPTION

PROJECT NO.: 19080200
DRAWN BY: TLJ
PROJECT MANAGER: RW
CHECKED BY: GMC
DATE: 08-15-20
SCALE: AS NOTED

M101
OVERALL FIRST FLOOR
MECHANICAL PLAN



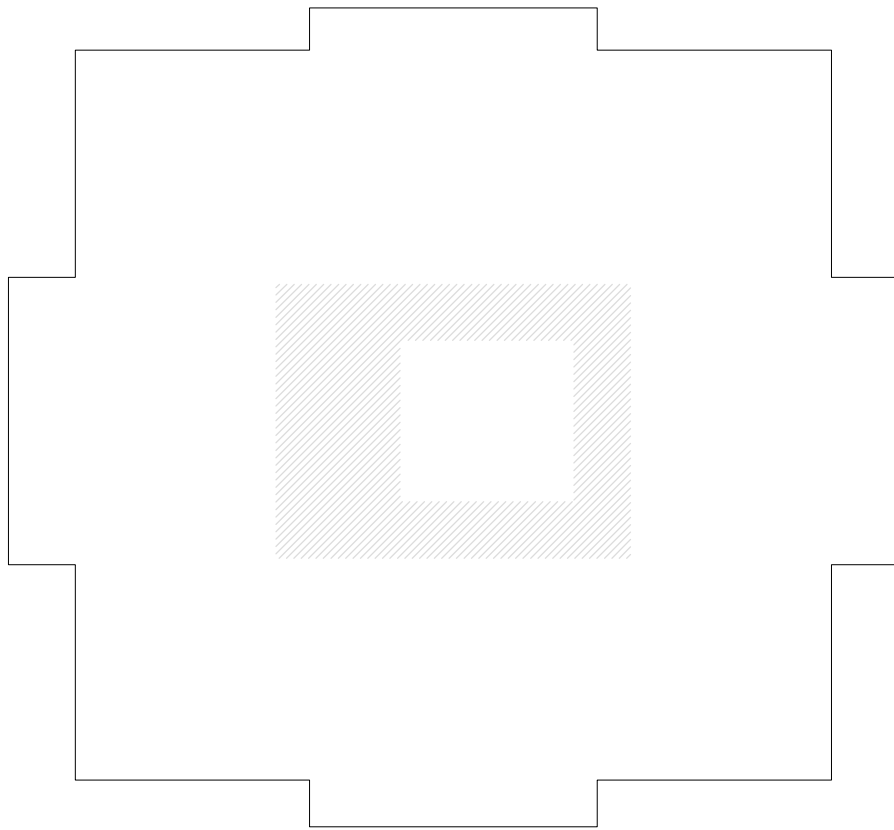
1 SECOND THRU SEVENTH FLOOR PLAN
SCALE: 1/8" = 1'-0"

GENERAL NOTES:

- FOR ABBREVIATIONS, SYMBOLS, LEGEND, AND GENERAL NOTES, REFER TO SHEET M100.
- COORDINATE EQUIPMENT INSTALLATION AND LOCATION WITH MANUFACTURER REQUIREMENTS PRIOR TO BIDDING AND CONSTRUCTION.
- INSTALL FIRE DAMPERS OR FIRE/SMOKE DAMPERS AT ALL DUCT PENETRATIONS THROUGH FIRE WALLS OR FIRE/SMOKE WALLS RESPECTIVELY. COORDINATE EXACT LOCATION PRIOR TO INSTALLATION.
- SMOKE DETECTORS FOR AIR HANDLING AND ROOFTOP UNITS SHALL PROVIDE AUTOMATIC FAN SHUTDOWN FOR UNIT AND PROVIDE A SUPERVISORY SIGNAL TO THE BUILDING FIRE ALARM SYSTEM. UPON BUILDING GENERAL ALARM ALL AIR HANDLING UNITS (EXCEPT WITHIN RESIDENTIAL UNITS) SHALL SHUT DOWN.
- PROVIDE A MOTORIZED DAMPER AND VOLUME DAMPER AT ALL OUTSIDE AIR CONNECTIONS TO AHU UNITS INSIDE TECH ROOMS.
- CONTRACTOR SHALL PROVIDE FIRE DAMPERS AT ALL PENETRATIONS OF FIRE-RATED CEILING MEMBRANE INCLUDING ALL MECHANICAL ROOMS.
- THE PROJECTS MECHANICAL DRAWINGS AND SPECIFICATIONS MAKE NO PROVISION(S) FOR THE DIVISION OF GC/SUBCONTRACTOR WORK SCOPE(S). THE GENERAL CONTRACTOR SHALL ENSURE ALL HIS/HER SUBCONTRACTORS HAVE NECESSARY PROVISIONS FOR THE COMPLETE FUNCTIONING AND WARRANTED WITHOUT EXCEPTION. CONTRACTOR SHALL INCLUDE SUCH PROVISIONS IN HIS/HER BASE BID.
- GENERAL CONTRACTOR AND HIS/HER SUB-CONTRACTOR(S) SHALL CAREFULLY COORDINATE ALL SPRINKLER LINE INSTALLATIONS WITH THE PROJECTS MECHANICAL AND PLUMBING SYSTEMS PRIOR TO INSTALLATIONS. SPRINKLER LINES TO BE DETERMINED TO BE IN CONFLICT WITH THE PROJECTS MECHANICAL DRAWINGS WILL BE REQUIRED TO BE RELOCATED AT NO ADDITIONAL COST TO THE OWNER OR ARCHITECT, WITHOUT EXCEPTION.

KEYED NOTES:

- 1 FOR ALL AREAS OF CEILING RENOVATION WORK FOR THIS PROJECT (REFER TO ARCHITECTURAL RCP); REMOVE EXISTING GRILLES & DIFFUSERS AND REPLACE WITH NEW OF THE SAME NECK SIZE BASIS OF DESIGN; PRICE INDUSTRIES, MODEL ASPD WITH WHITE ENAMEL FINISH.



Note:
SHADED
AREAS ARE
WITHIN THE
SCOPE

LIMITS OF CONSTRUCTION KEY PLAN

BESSOLO
DESIGN GROUP, INC.
ARCHITECTURE ■ DEVELOPMENT
License #AA-C002117
7901 4TH ST. NORTH, SUITE 200
ST. PETERSBURG, FL 33702
727.894.4453 ■ www.bessolo.com

KEM
ENGINEERS, INC.
License # EB-0007103
7901 4TH ST. NORTH, SUITE 200
ST. PETERSBURG, FL 33702
727.894.4668
PROFESSIONAL SEAL
Gregory M. Clements, P.E.
State of Florida 67375
© COPYRIGHT KEM ENGINEERS, INC. THE DRAWING AND ALL INFORMATION CONTAINED HEREIN IS THE PROPERTY OF KEM ENGINEERS, INC. AND IS TO BE USED ONLY FOR THE PROJECT AND SITE SPECIFICALLY IDENTIFIED HEREIN. NO PART OF THIS DRAWING IS TO BE REPRODUCED OR TRANSMITTED IN ANY FORM OR BY ANY MEANS, ELECTRONIC OR MECHANICAL, INCLUDING PHOTOCOPYING, RECORDING, OR BY ANY INFORMATION STORAGE AND RETRIEVAL SYSTEM, WITHOUT PERMISSION IN WRITING FROM KEM ENGINEERS, INC. THIS DRAWING IS PRELIMINARY AND NOT FOR CONSTRUCTION PURPOSES UNLESS SO NOTED AND SHALL BE CORRECTED, APPROVED, & SEALED BY KEM ENGINEERS, INC. ON THE DATE ACCORDANT TO THE SEAL. PRINTED COPIES OF THIS DOCUMENT ARE NOT CONSIDERED VALID FOR CONSTRUCTION PURPOSES. THE STRUCTURE MUST BE IDENTICAL TO THE ELECTRONIC COPIES.

**RALPH RICHARDS
TOWER RENOVATION**
211 SOUTH PROSPECT AVENUE
CLEARWATER, FL 33756

ISSUED
DATE: 11/15/2010
ISSUED FOR:
08-15-20 CONSTRUCTION DOCUMENTS

REVISIONS		
NO.	DATE:	DESCRIPTION

PROJECT NO: 15080200
DRAWN BY: TLJ
PROJECT MANAGER: RW
CHECKED BY: GMC
DATE: 08-15-20
SCALE: 1/8" = 1'-0"

M102
SECOND THRU SEVENTH
FLOOR PLAN