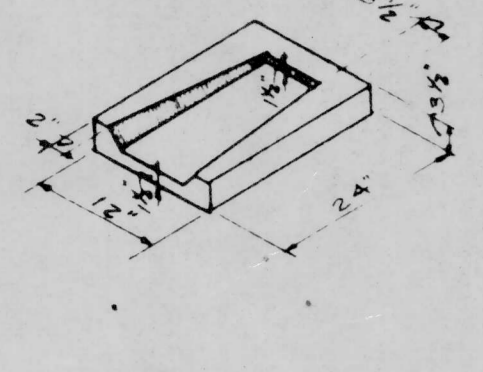
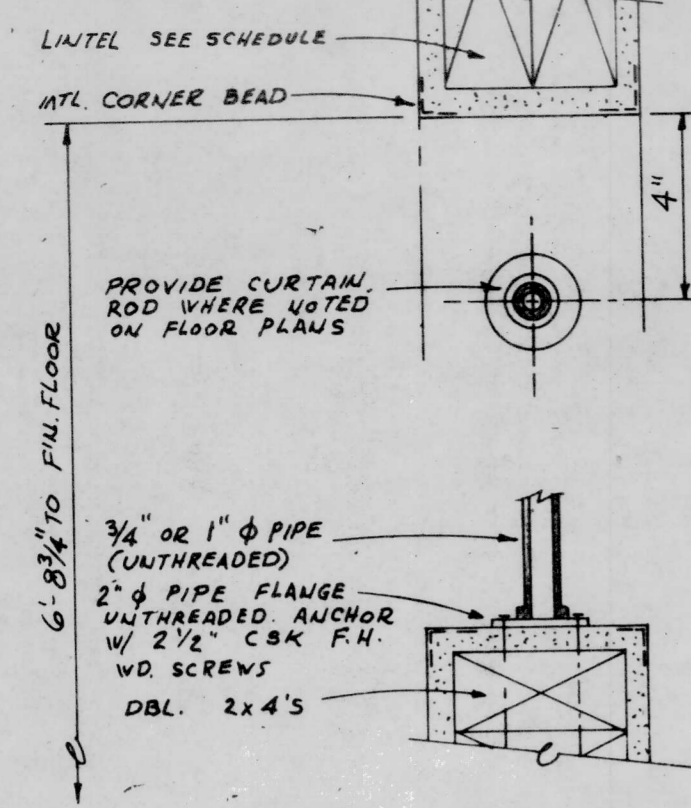


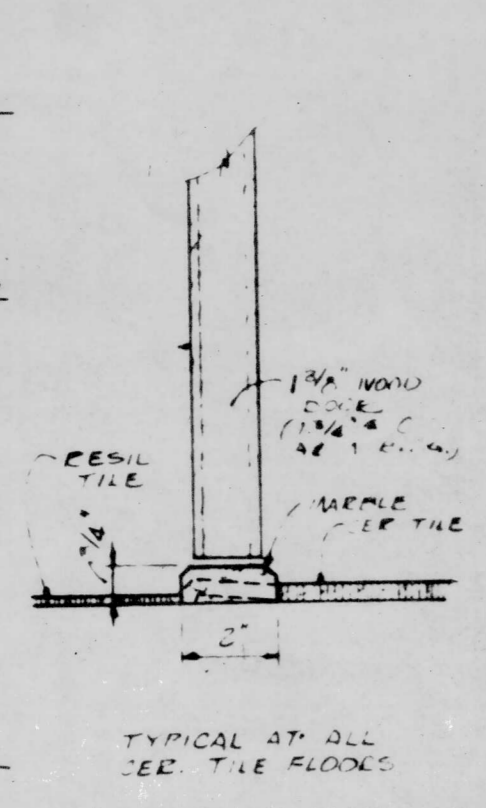
REINFORCE #4 IN MESH
PROVIDE FLASH BLOCK @ ALL
DOWNSPOUTS DRAIN AWAY FROM
BUILDING.



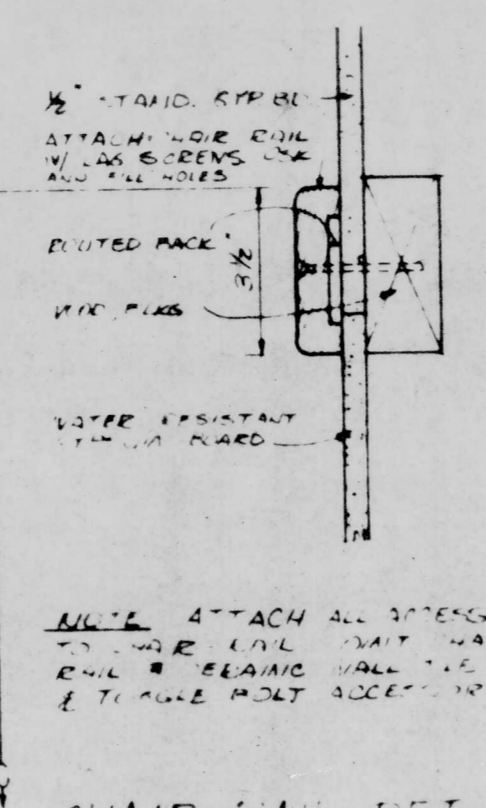
CONC. SPLASH BLOCK
1/2" x 1/2"



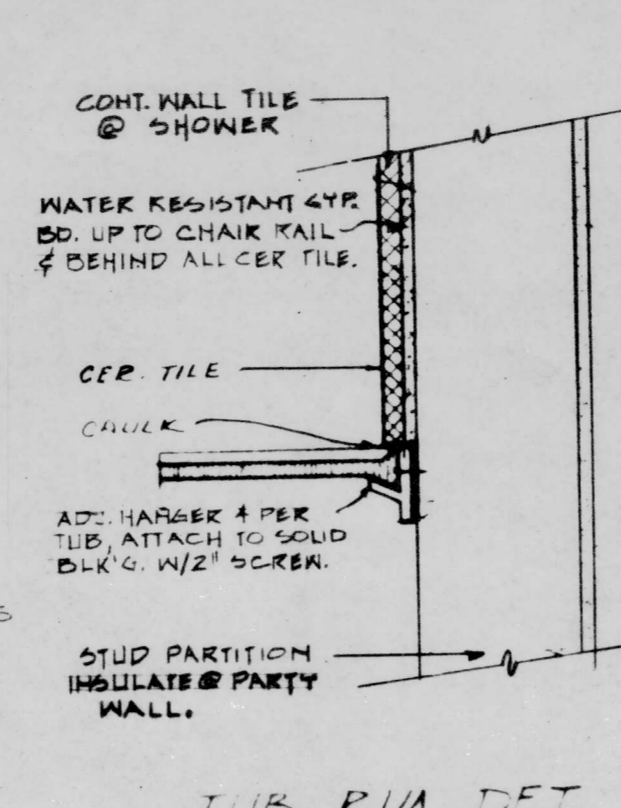
TYP. CASSED OPENING
3" x 10"



MARBLE TILE HOLD OR
RAISED BULLNOSE TILE

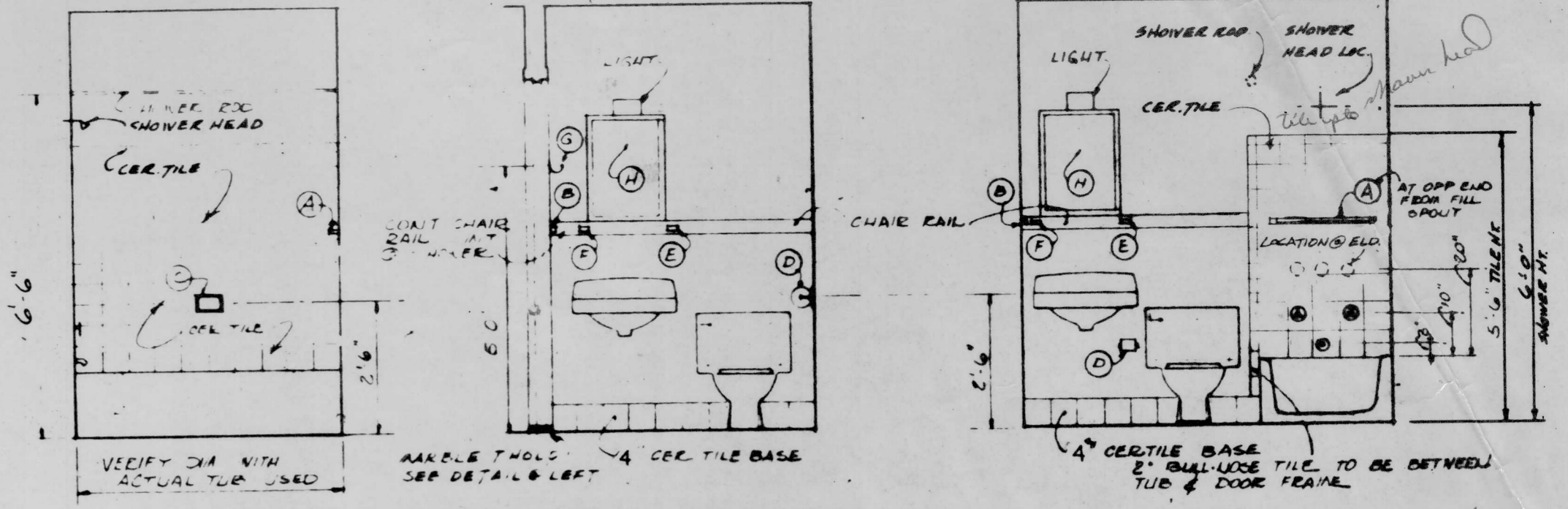


CHAIR RAIL LET
3" x 10"



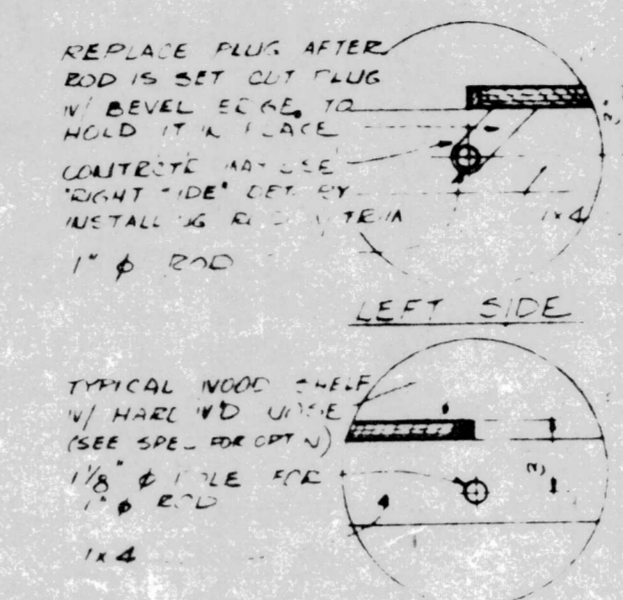
TUB RIM DET
3" x 10"

- BATH ACCESSORY SCHEDULE**
- (A) 24 LEAD BARE
 - (B) 1 TOWEL BAR
 - (C) SOAP DISH GRAB BAR
 - (D) TOILET TISSUE HOLDER
 - (E) TUB AID & TUB-TOILET RING
 - (F) SOAP DISH
 - (G) 1/2" LIP LOCK (ON DOOR)
 - (H) MEDICINE CABINET

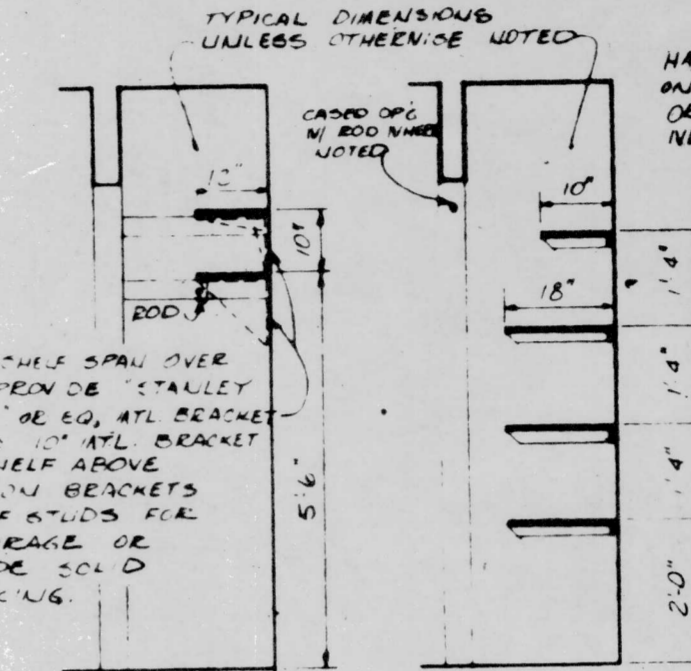


BATH ELEVATIONS
(TYPICAL ARRANGEMENTS)

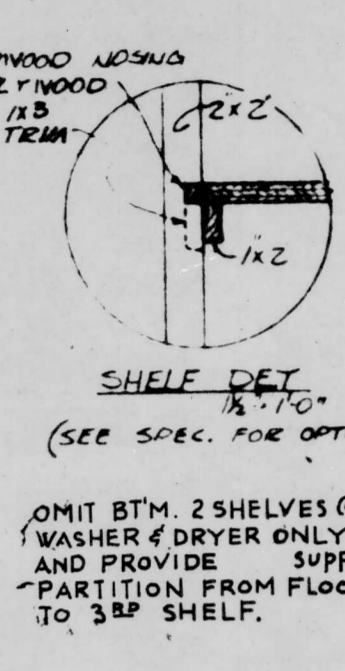
SCALE: 3/8" = 1'-0"



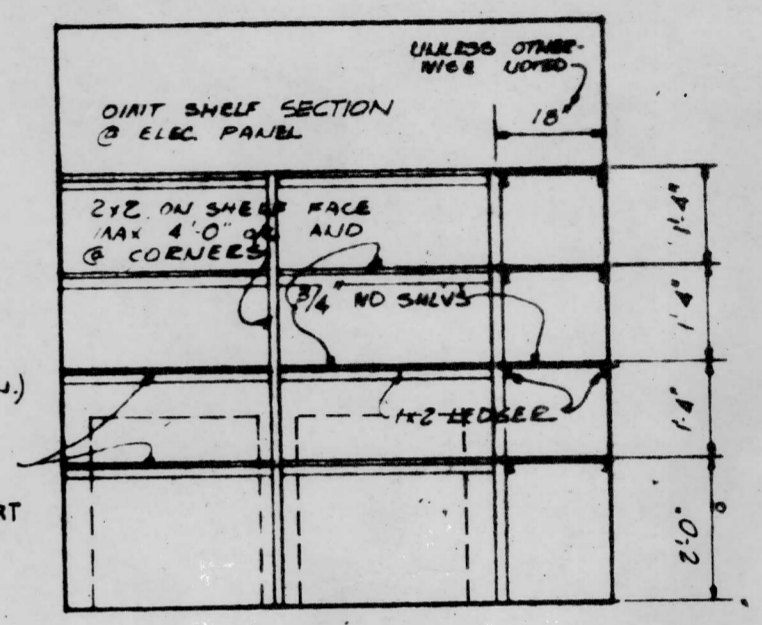
CLOSET ROD
1/8" x 1'-0"



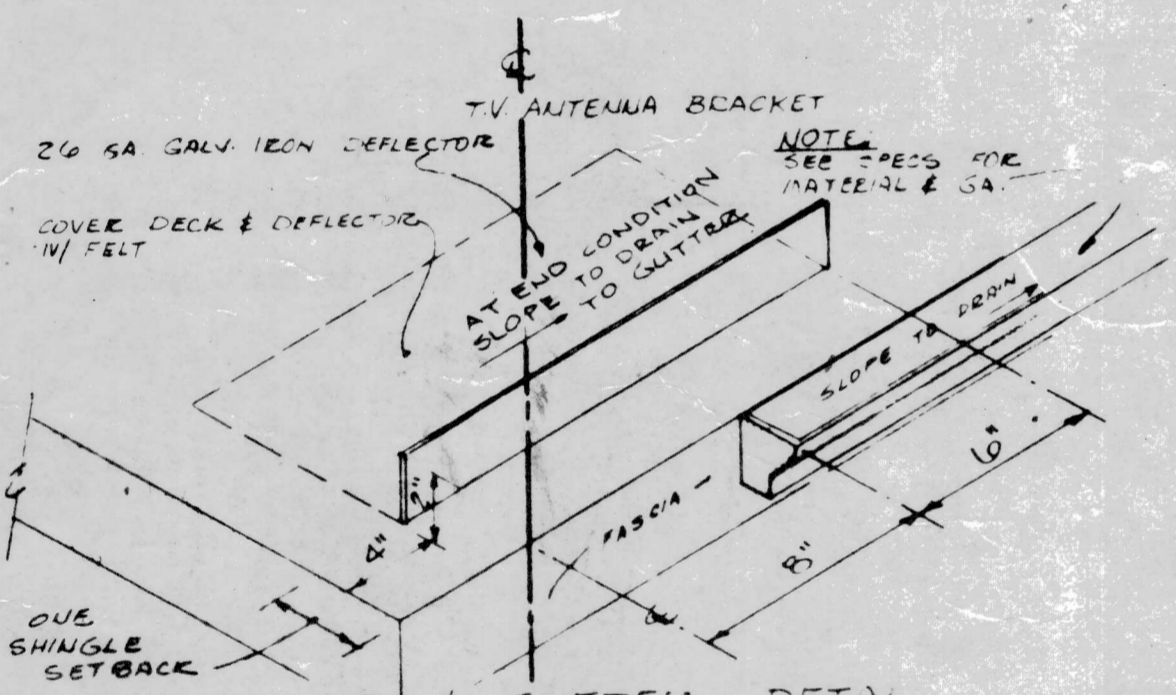
CLOSET
7/8" x 1'-0"



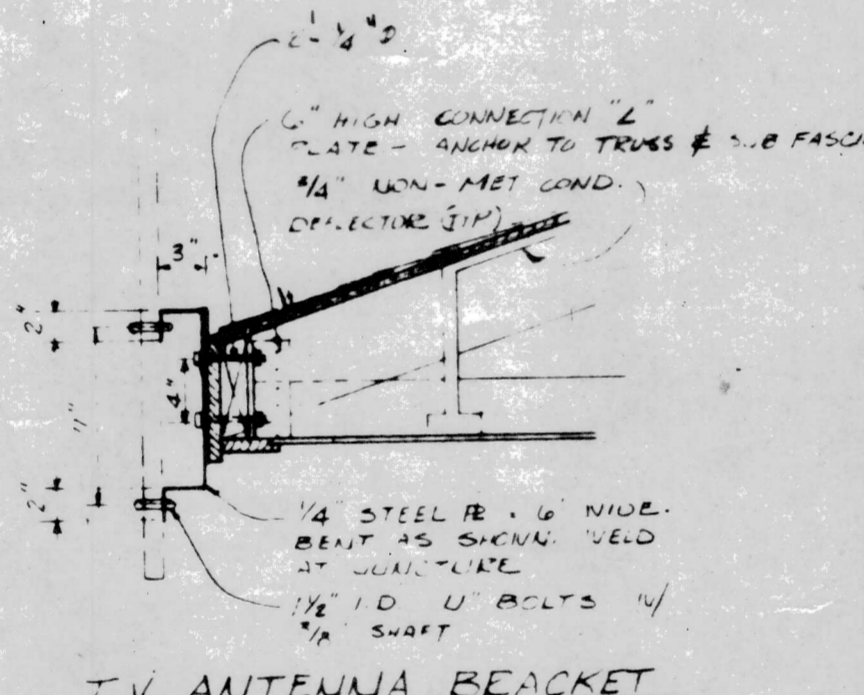
LINEN
3/8" x 1'-0"



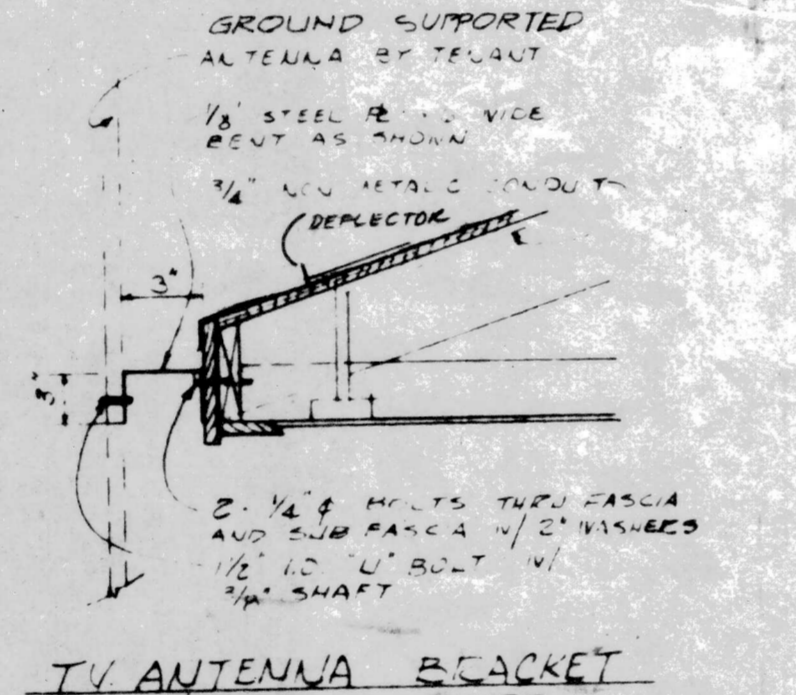
STORAGE
3/8" x 1'-0"



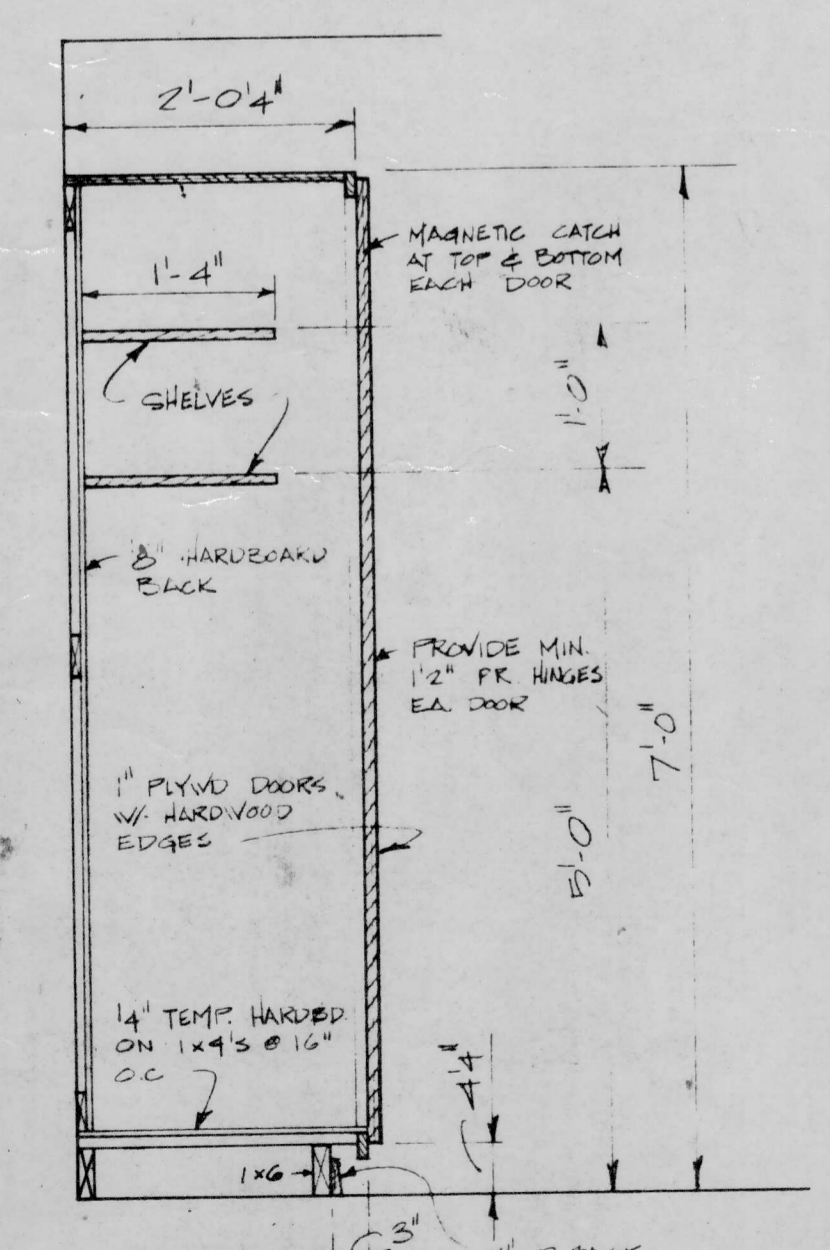
DEFLECTOR & GUTTER DETAIL
@ REAR OF 2 STORY UNITS



T.V. ANTENNA BRACKET
2-STORY UNITS

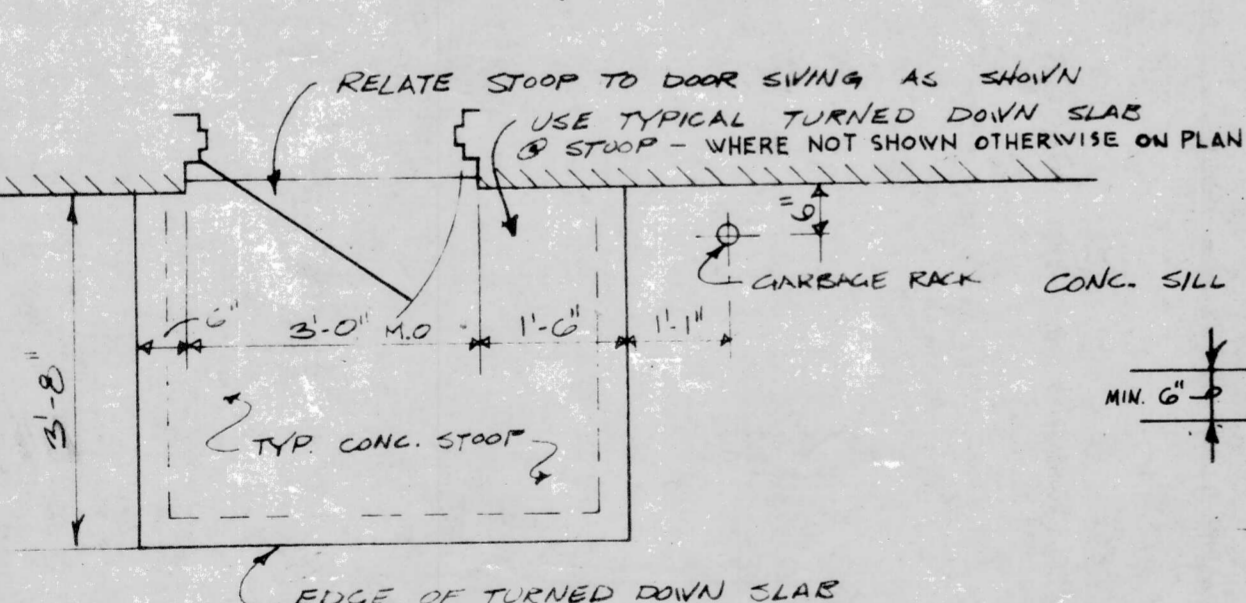


T.V. ANTENNA BRACKET
1-STORY UNITS

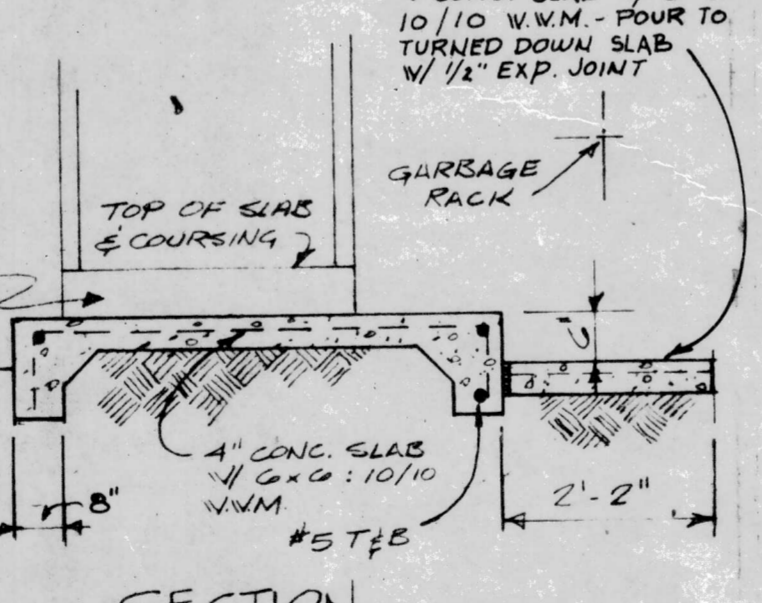


SECTION
3/4" x 1'-0"

BROOM CLOSET DETAIL



TYP. REAR CONC. STOOP

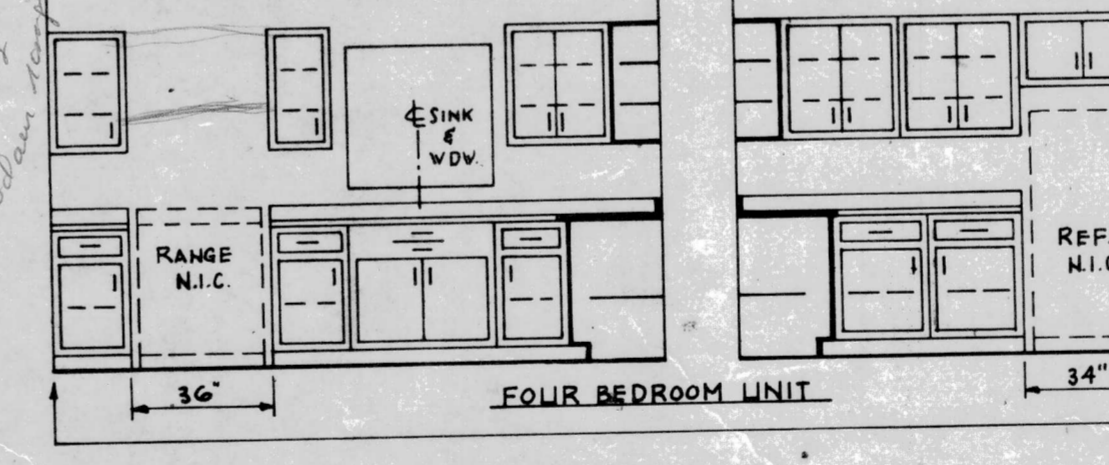


SECTION
1/2" = 1'-0"

TYPICAL REAR CONC. STOOP DETAILS

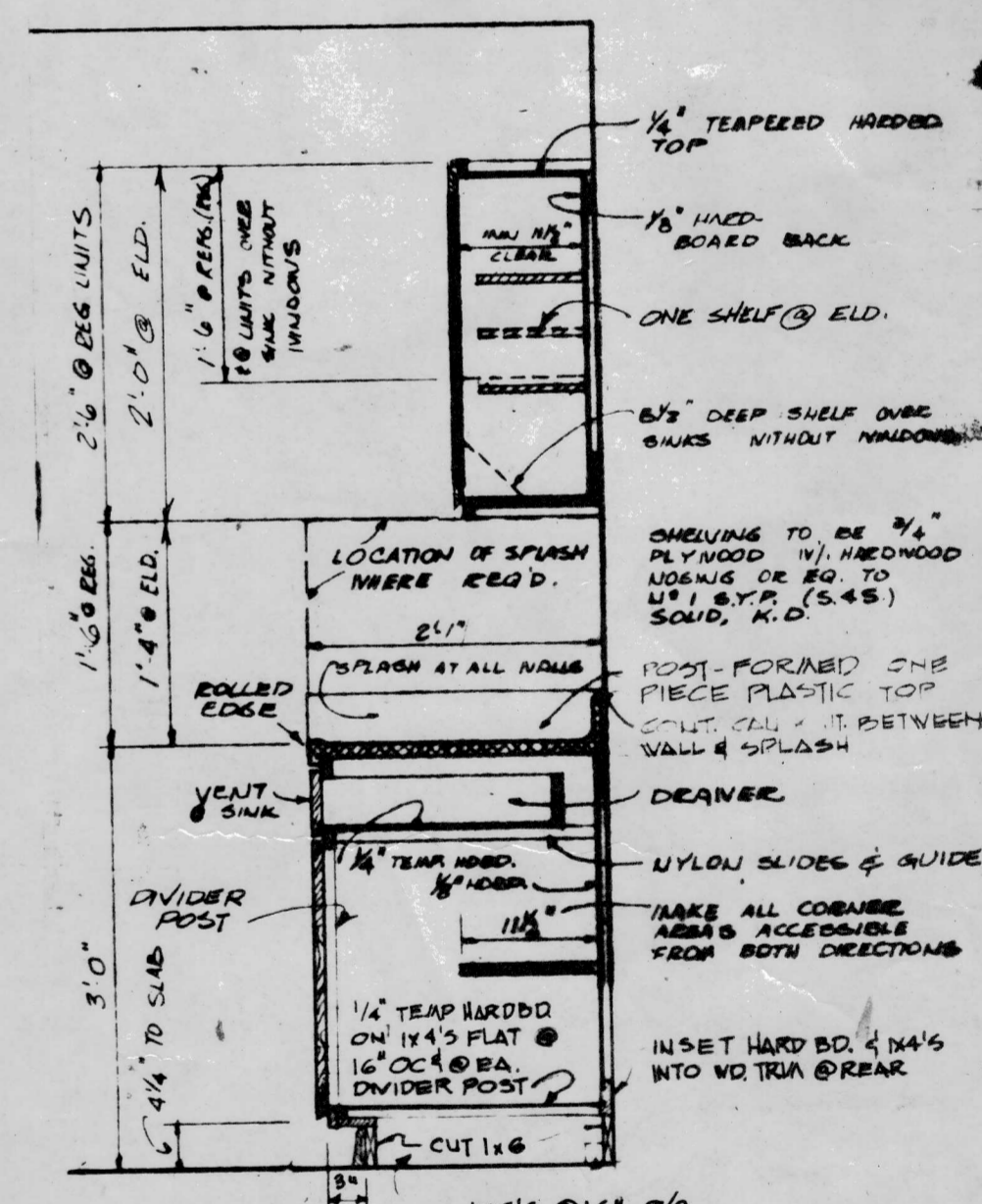


THREE BEDROOM UNIT



FOUR BEDROOM UNIT

NOTE:
ABOVE ELEVATIONS DRAWN TO SHOW THREE & FOUR
BEDROOM UNITS, OTHER KITCHEN ELEVATIONS SIMILAR
DELETE WALL CABINET ABOVE REFRIGERATOR AT ELDERLY
UNITS.



SECTION - KITCHEN CABINETS
SCALE: 3/8" = 1'-0"

PROVIDE 1/2" HIGH x 2 1/2" WIDE LAMINATED PLASTIC SPLASH,
MOUNTED ON 3/4" PLYWOOD w/ LAM. PLASTIC EDGES
TOP & BOTTOM BOUNDED. ANCHOR INTO STUDS OR SOLID
BLOCKING w/ 1/4" SS OR CHROME WD. SCREWS &
FINISH WASHERS. PROVIDE @ WALL ON SIDE OF RANGE &
ALIGN TOP w/ BOTTOM OF WALL CABINET.

CONCRETE BLOCK	[Symbol]
CONCRETE	[Symbol]
BRICK	[Symbol]
WOOD STUD CONSTRUCTION	[Symbol]
ROUGH WOOD OR BLOCKING	[Symbol]
FINISH WOOD OR WOOD TRIM	[Symbol]
STEEL	[Symbol]

UNIT INDICATION	[Symbol]
BEDROOMS	[Symbol]
WATER	[Symbol]

LEGEND

JOB NO	7115
DATE	5/19/72
DRAWN BY	
CHECKED	
APPROVED	
DATE	
REVISIONS	
DESCRIPTION	

LOW RENT HOUSING PROJECT
N.C. 14-6 LUMBERTON, N.C.
INTERIOR ELEVATIONS & DETAILS

TOMBERLIN ASSOCIATES, ARCHITECTS
INCORPORATED
2099 MEMPHIS DRIVE, N.W. - ATLANTA, GEORGIA 30324 - TELEPHONE 815-4521 - AREA CODE 404
WILBER TOMBERLIN, AIA CHARLES J. ROBINSON, AIA JOSEPH S. BOND, AIA D. C. HUDSON, JR., AIA