

**ASBESTOS INSPECTION SURVEY
OAK GROVE ESTATES
342 OAK VIEW COURT
TOLEDO, OHIO**

Prepared For:

**Lucas Metropolitan Housing Authority
201 Belmont Avenue
Toledo, Ohio 43604**

**September 22, 2015
Project No. 86234.01**

WATTERSON



September 22, 2015

Project No. 86234.01

Mr. Jeffrey Nowak
Project Coordinator
Lucas Metropolitan Housing Authority
201 Belmont Avenue
Toledo, Ohio 43604

**Asbestos Inspection Survey
Oak Grove Estates
342 Oak View Court
Toledo, Ohio**

Dear Mr. Nowak:

Watterson Environmental & Facilities Management (Watterson) performed an Asbestos Inspection Survey at the Oak Grove Estates facilities.

Watterson appreciates the opportunity to perform as consultant for this project. If you should have any questions or need further assistance, please contact us at (419) 824-5210.

Sincerely,

Watterson Environmental & Facilities Management

David A. Dukat, PG
Vice President, Environmental

P:\Clients\LMHA\Asbestos-Demo-Const\8623401 Asbestos Surveys 12 LMHA Facilities\Oak View and Oak Place\8623401 Oak Grove Estates Asbestos Survey Toledo OH.doc

TABLE OF CONTENTS

Section	Page
1.0 EXECUTIVE SUMMARY	1
Table 1.0 – Summary of Asbestos Containing Materials	1
2.0 FACILITY DESCRIPTION	3
3.0 ASBESTOS SURVEY METHODOLOGY	4
4.0 SUSPECT ASBESTOS-CONTAINING MATERIALS.....	5
Table 2.0 – Identified Homogeneous Areas	5
5.0 LIMITATIONS AND CONDITIONS	10

APPENDICES

Appendix A	Asbestos Sampling and ACM Location Drawings
Appendix B	Photos
Appendix C	Inspector Credentials
Appendix D	Analytical Results

1.0 EXECUTIVE SUMMARY

An Asbestos Inspection Survey was performed by Watterson Environmental & Facilities Management (Watterson) at the Oak Grove Estates facilities at the request of the Lucas Metropolitan Housing Authority (LMHA). The survey was conducted by Mr. Kristopher Barnswell on May 29, 2015, and June 1, 2015. Mr. Barnswell is an Ohio Certified Asbestos Hazard Evaluation Specialist (CAHES). Refer to Appendix C for a copy of Mr. Barnswell's license.

This survey included the assessment, quantifying, and sampling of suspect asbestos-containing materials (ACMs) from the common and mechanical areas within the buildings and exterior, with the exception of roofing materials which were not included within the scope of work of this survey. Only one residential unit (9842 Oak Place Court Apartment C) was assessed to provide representative information for the residential units. However, additional materials may be present within other residential units not surveyed. In addition, this was not completed as a destructive survey, and additional materials may be present that were not accessible during this project.

Table 1.0 identifies ACMs, if any, that were identified during this Asbestos Inspection Survey. Figures (included in Appendix A) show the sampling locations and location of the identified ACMs, if any. Photos of the materials identified during this survey are included in Appendix B.

Table 1.0 Summary of Asbestos Containing Materials Oak Grove Estates 342 Oak View Court Toledo, Ohio				
Homogeneous Area	Material Description	Material Location	Approximate Quantity	Friable
Common Area (345 Oak View Court)				
No ACMs Identified for this Area				
Common Area (350 Oak View Court)				
CTA	Ceiling Texture	350 Oak View Court Hallways	400 s.f.	Yes
FTA	12" x 12" Beige Vinyl Floor Tile Mastic	350 Oak View Court 1 st Floor Hallway	225 s.f.	No
Office (Oak View Court)				
FTA	12" x 12" Gray Vinyl Floor Tile	Oak View Court Office Closet, Hallway, Entrance, Restroom	225 s.f.	No
Maintenance Building (353 Oak View Court)				
FTA	12" x 12" Beige Vinyl Floor Tile Mastic	Throughout Oak View Court Maintenance Building	950 s.f.	No

Table 1.0 Summary of Asbestos Containing Materials Oak Grove Estates 342 Oak View Court Toledo, Ohio				
Homogeneous Area	Material Description	Material Location	Approximate Quantity	Friable
CTA	Ceiling Texture	Throughout Oak View Court Maintenance Building	950 s.f.	Yes
DWA*	Drywall/Joint Compound	Throughout Oak View Court Maintenance Building	2200 s.f.	Yes
Common Area (9842 Oak Place Court)				
FTA	12" x 12" Beige Vinyl Floor Tile Mastic	Common Area (9842 Oak Place Court) 1 st Floor Hallway	225 s.f.	No
CTA	White Ceiling Texture	1 st and 2 nd Floor Hallways, Laundry Room	500 s.f.	Yes
Common Area (9845 Oak Place Court)				
No ACMs Identified for this Area				
Vacant Unit (9842 Oak Place Court)				
CTA	White Ceiling Texture	Throughout Unit	650 s.f.	Yes
FTA**	12" x 12" Beige Vinyl Floor Tile Mastic	Beneath Family Room Carpet	150 s.f.	No
FTB	12" x 12" Beige Vinyl Floor Tile Mastic	Throughout	625 s.f.	No
Exterior (Oak View and Oak Place Court)				
No ACMs Identified for this Area				

* The drywall and joint compound located in this building, initially identified by PLM analysis, was found to contain a trace amount (<1%) of asbestos. Follow-up analysis by PLM Point Count identified the joint compound to contain less than 1 % asbestos (0.5% and 0.8%). Although NESHAP regulations does not consider this material an ACM; OSHA standards require contractor notification prior to any material disturbance and appropriate worker protections to handle materials with asbestos.

** There was insufficient black mastic for analytical analysis. However, black mastic associated with adjacent floor tiles was found to contain asbestos. Therefore, it should be assumed that the black mastic associated with this floor tile contains asbestos until additional sampling/testing can be completed.

2.0 FACILITY DESCRIPTION

An Asbestos Inspection Survey was performed by Watterson on June 1, 2015 at the Oak Grove Estates facilities property is located at 342 Oak View Court in Holland, Ohio. The facility consists of multiple two-story residential buildings that were reportedly constructed in 1972.

The facility is located northeast of the Angola and County Road 6-1 intersection in Holland Ohio. The exterior is of brick and mortar exterior building materials. The interior consists of stud walls covered with sheet rock and finished textured ceilings. Vinyl floor tile is present throughout the facility and is the dominant flooring material in the common areas, maintenance and office building and residential units.

3.0 ASBESTOS SURVEY METHODOLOGY

During this Asbestos Inspection Survey, Watterson assessed the following areas within the facility for suspect ACMs:

- Exterior building materials excluding the roofing materials.
- Interior building materials within the common spaces and mechanical areas. Only limited assessment for multiple layers of tile or the presence of materials beneath carpeting were completed as part of the scope of work for this project. As noted, destructive assessment of the building for hidden suspect materials was not completed.
- Only one residential unit (9842 Oak Place Court Apartment C). The remaining residential units were not accessed during this project (not included as part of the scope of work for this project).

The suspect ACMs were grouped into Homogeneous Areas (HAs). An HA is a material that exhibits similar physical characteristics and that was installed at the same time, as observed by the licensed inspector. The suspect ACMs were then quantified and documented on Watterson's HA worksheets. Vibration dampeners, materials within boiler systems (if any), and fire doors were not sampled as part of this project and should be assumed to be asbestos containing until sampling is completed to demonstrate otherwise. In addition, as noted, the roof field and associated sealants/flashing or other materials were not sampled as part of this project and should also be assumed to be asbestos-containing until sampling is completed to demonstrate otherwise.

Upon identifying the suspect ACMs, representative bulk samples were collected from each HA following OSHA and National Emissions Standards for Hazardous Air Pollutants (NESHAP) regulations. Sample locations were chosen so as to be representative of the material sampled, based on the licensed inspector's professional judgment. Each sample collected was given a unique sample number. Sample and material locations were documented on floor plan drawings of the facility that were developed by Watterson during this project.

The friability of each material was evaluated and noted prior to the collection of each sample. Friable materials can be crushed into powder using hand pressure. Non-friable materials are materials that, when dry, cannot be crumbled, pulverized, or reduced to powder by hand pressure.

At the completion of the fieldwork, the bulk samples collected were logged onto chain of custody sheets and forwarded to the laboratory for analysis by Polarized Light Microscopy (PLM). The laboratory participates in the National Voluntary Laboratory Accreditation Program (NVLAP). The bulk samples were analyzed in accordance with the United States Environmental Protection Agency (U.S. EPA) "Method for Determination of Asbestos in Bulk Building Materials" 600/R-93/116. This method requires that multiple and distinct layers be analyzed separately.

4.0 SUSPECT ASBESTOS-CONTAINING MATERIALS

The identified materials and results of the bulk sampling are listed below in Table 2.0. This table lists the material descriptions, material locations, the number of samples collected, and whether or not the materials are asbestos containing. Drawings showing the sample locations are included in Appendix A, and photographs of each Homogeneous Area are included in Appendix B. Appendix D contains the analytical report with the results of the bulk sampling.

Table 1.0 above provides a summary list of the materials that were found to be asbestos-containing, if any. The location of ACMs, if any identified, are also shown on the drawings included in Appendix A.

Table 2.0 Identified Homogeneous Areas Oak Grove Estates 342 Oak View Court Toledo, Ohio				
Homogeneous Area	Material Description	Material Locations	Number of Samples	Analytical Results
Common Area (345 Oak View Court)				
FTA	12" x 12" Beige Vinyl Floor Tile	1 st Floor Hallway	2	Non-Asbestos
FTMA	Yellow Mastic Associated with FTA			Non-Asbestos
FTB	12" x 12" Beige Vinyl Floor Tile	2 nd Floor Hallway and Laundry	2	Non-Asbestos
FTMB	Yellow Mastic Associated with FTB			Non-Asbestos
CTA	Ceiling Texture	Hallways	2	Non-Asbestos
BCA	Brown Cove Base	Hallways, Laundry	2	Non-Asbestos
BCMA	Yellow Mastic Associated with BCA			Non-Asbestos
DWA	Drywall/Joint Compound	Boiler Room	2	Non-Asbestos
DWB	Drywall/Joint Compound	Hallways, Laundry	2	Non-Asbestos
Common Area (350 Oak View Court)				
BCA	Brown Cove Base	Laundry	2	Non-Asbestos
BCMA	Yellow Mastic Associated with BCA			Non-Asbestos
CTA	Ceiling Texture	Hallways	2	Asbestos
DWA	Drywall/Joint Compound	Boiler Room	2	Non-Asbestos
DWB	Drywall/Joint Compound	Hallways, Laundry	2	Non-Asbestos

**Table 2.0
Identified Homogeneous Areas
Oak Grove Estates
342 Oak View Court
Toledo, Ohio**

Homogeneous Area	Material Description	Material Locations	Number of Samples	Analytical Results
FTA	12" x 12" Beige Vinyl Floor Tile	1st Floor Hallway	2	Non-Asbestos
FTMA	Black Mastic Associated with FTA			Asbestos
FTB	12" x 12" Beige Vinyl Floor Tile	2 nd Floor Hallway and Laundry	2	Non-Asbestos
FTMB	Yellow Mastic Associated with FTB			Non-Asbestos
STA	Brown Stair Tread	Hallway	2	Non-Asbestos
STAM	Yellow Mastic Associated with STA			Non-Asbestos
Office (Oak View Court)				
WCA	White Interior Window Caulk	Entrance Offices	2	Non-Asbestos
WCB	White Exterior Window Caulk	Exterior	2	Non-Asbestos
WCC	Gray Exterior Door Caulk	Exterior	1	Non-Asbestos
CBA	Brown Cove Base	Entrance	2	Non-Asbestos
CBAM	Yellow Mastic Associated with CBA			Non-Asbestos
CBB	Gray Base Cove	Restrooms, Offices, Hallway, Furnace	2	Non-Asbestos
CBBM	Yellow Mastic Associated with CBB			Non-Asbestos
DWA	Drywall/Joint Compound	Throughout	2	Non-Asbestos
CTA	Ceiling Texture	Throughout	2	Non-Asbestos
FTA	12" x 12" Gray Vinyl Floor Tile	Closet, Hallway, Entrance, Restroom	2	Non-Asbestos
FTMA	Black Mastic Associated with FTA			Asbestos
FTB	12" x 12" Gray Vinyl Floor Tile	Furnace	2	Non-Asbestos
FTMB	Yellow/Red Mastic Associated with FTB			Non-Asbestos

**Table 2.0
Identified Homogeneous Areas
Oak Grove Estates
342 Oak View Court
Toledo, Ohio**

Homogeneous Area	Material Description	Material Locations	Number of Samples	Analytical Results
Maintenance Building (353 Oak View Court)				
BCA	Brown Cove Base	Restroom, Breakroom	2	Non-Asbestos
BCMB	Yellow Mastic Associated with BCA			Non-Asbestos
BCB	Gray Cove Base	Storage # 2,3	2	Non-Asbestos
BCMA	Yellow Mastic Associated with BCB			Non-Asbestos
DWA	Drywall/Joint Compound	Throughout	2	Non-Asbestos*
FTA	12" x 12" Beige Vinyl Floor Tile	Throughout	3	Non-Asbestos
FTMA	Black Mastic Associated with FTA			Asbestos
CTA	Ceiling Texture	Throughout	3	Asbestos
WCA	White Compound	Exterior Walls	2	Non-Asbestos
WCB	Gray Caulk	Exterior Doors	2	Non-Asbestos
Common Area (9842 Oak Place Court)				
FTA	12" x 12" Beige Vinyl Floor Tile	1st Floor Hallway	2	Non-Asbestos
FTMA	Black Mastic Associated w/ FTA			Asbestos
FTB	12" x 12" Beige Vinyl Floor Tile	2 nd Floor Hallway and Laundry	2	Non-Asbestos
FTMB	Black Mastic Associated with FTB			Non-Asbestos
BCA	Black Cove Base	1 st Floor Hallway	2	Non-Asbestos
BCMA	White Mastic Associated with BCA			Non-Asbestos
DWA	Drywall/Joint Compound	Hallways, Laundry	2	Non-Asbestos
DWB	Drywall/Joint Compound	Boiler Room	3	Non-Asbestos
STA	Brown Stair Tread	1 st and 2 nd Floor Stairs	2	Non-Asbestos
STAM	Yellow Mastic Associated with STA			Non-Asbestos
CTA	Ceiling Texture	Hallways Laundry Room	2	Asbestos

Table 2.0
Identified Homogeneous Areas
Oak Grove Estates
342 Oak View Court
Toledo, Ohio

Homogeneous Area	Material Description	Material Locations	Number of Samples	Analytical Results
Common Area (9845 Oak Place Court)				
STA	Brown Stair Tread	1 st and 2 nd Floor Hallways	2	Non-Asbestos
STAM	Yellow Mastic Associated with STA			Non-Asbestos
FTA	12" x 12" Beige Vinyl Floor Tile	1 st and 2 nd Floor Hallways	3	Non-Asbestos
FTMA	Black Mastic Associated with FTA			Non-Asbestos
FTB	12" x 12" Beige Vinyl Floor Tile	Laundry Room	1	Non-Asbestos
FTMB	Yellow Mastic Associated with FTB			Non-Asbestos
DWA	Drywall/Joint Compound	Boiler Room	2	Non-Asbestos
DWB	Drywall/Joint Compound	1 st and 2 nd Floor Hallways, Laundry Room	2	Non-Asbestos
BCA	Brown Cove Base	1 st and 2 nd Floor Hallways, Laundry Room	2	Non-Asbestos
BCMA	Yellow Mastic Associated with BCA			Non-Asbestos
CTA	Ceiling Texture	1 st and 2 nd Floor Hallways	2	Non-Asbestos
Vacant Unit (9842 Oak Place Court)				
WCA	White Window Caulk	Family Room, Bedrooms	2	Non-Asbestos
CTA	White Ceiling Texture	Throughout	2	Asbestos
DWA	Drywall/Joint Compound	Throughout	2	Non-Asbestos
FTA	12" x 12" Beige Vinyl Floor Tile	Family Room (Below Carpet)	1	Non-Asbestos
FTMA	Black Mastic Associated with FTA			Assumed Asbestos**
FTB	12" x 12" Beige Vinyl Floor Tile	Throughout	3	Non-Asbestos
FTMB	Black Mastic Associated with FTB			Asbestos

Table 2.0 Identified Homogeneous Areas Oak Grove Estates 342 Oak View Court Toledo, Ohio				
Homogeneous Area	Material Description	Material Locations	Number of Samples	Analytical Results
Exterior (Oak View and Oak Place Court)				
DCA	White Door Caulk	Exterior	2	Non-Asbestos
WCA	White Window Caulk	Exterior	3	Non-Asbestos
WCC	Clear Exterior Caulk	Exterior	1	Non-Asbestos
WCD	White Exterior Caulk	Exterior	3	Non-Asbestos
WCE	Gray Exterior Caulk	Exterior	1	Non-Asbestos

* The drywall and joint compound located in this building, initially identified by PLM analysis, was found to contain a trace amount (<1%) of asbestos. Follow-up analysis by PLM Point Count identified the joint compound to contain less than 1 % asbestos (0.5% and 0.8%). Although NESHAP regulations does not consider this material an ACM; OSHA standards require contractor notification prior to any material disturbance and appropriate worker protections to handle materials with asbestos.

** There was insufficient black mastic for analytical analysis. However, black mastic associated with adjacent floor tiles was found to contain asbestos. Therefore, it should be assumed that the black mastic associated with this floor tile contains asbestos until additional sampling/testing can be completed.

5.0 LIMITATIONS AND CONDITIONS

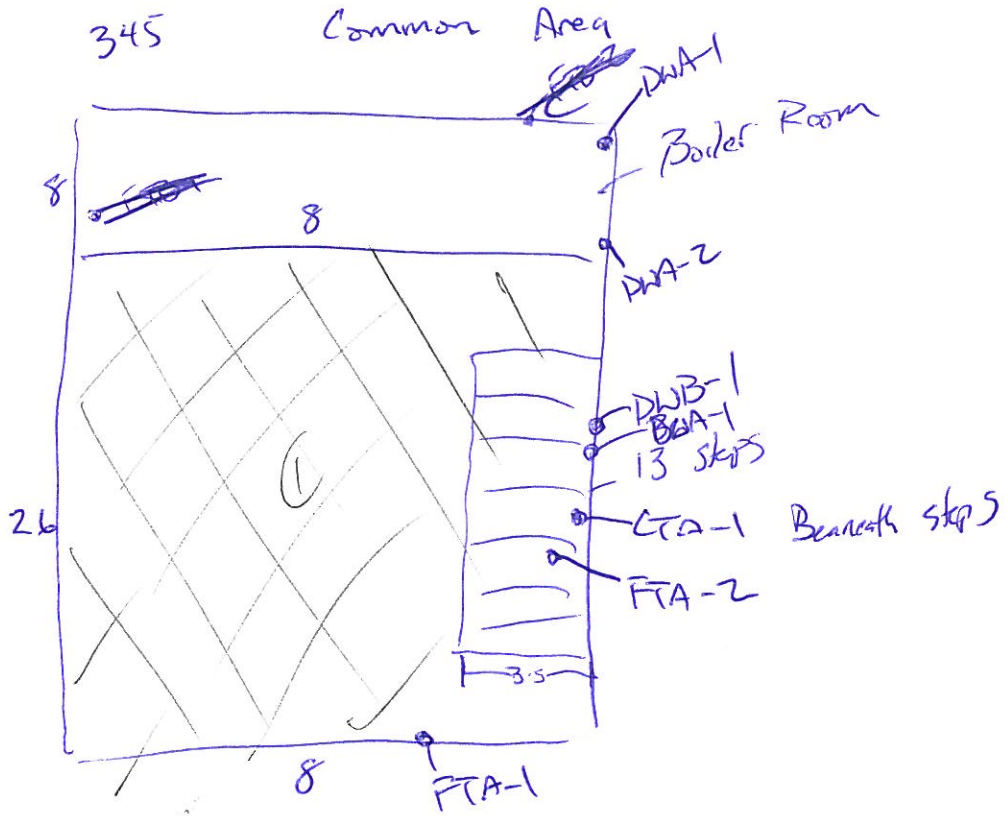
The information contained within this report was prepared for the exclusive use and reliance of LMHA and Watterson. This information is based on the specific parameters of the scope of work for this project and the regulations in force at the time of this project.

Often materials are located in confined or inaccessible locations with little or no visible manifestation of their presence. These materials may be found in various areas such as under existing flooring materials, above ceilings, behind walls, materials within fixtures, electrical wire casing, or buried pipes and wires. Because of the potential for hidden materials, it may not be possible to determine whether all suspect building materials have been identified, located, and subsequently tested. Destructive measures to access these potentially hidden materials were not employed by Watterson as part of this project. However, Watterson does warrant that its investigations and methodology reflect our best efforts based upon the prevailing standard of care in the environmental industry.

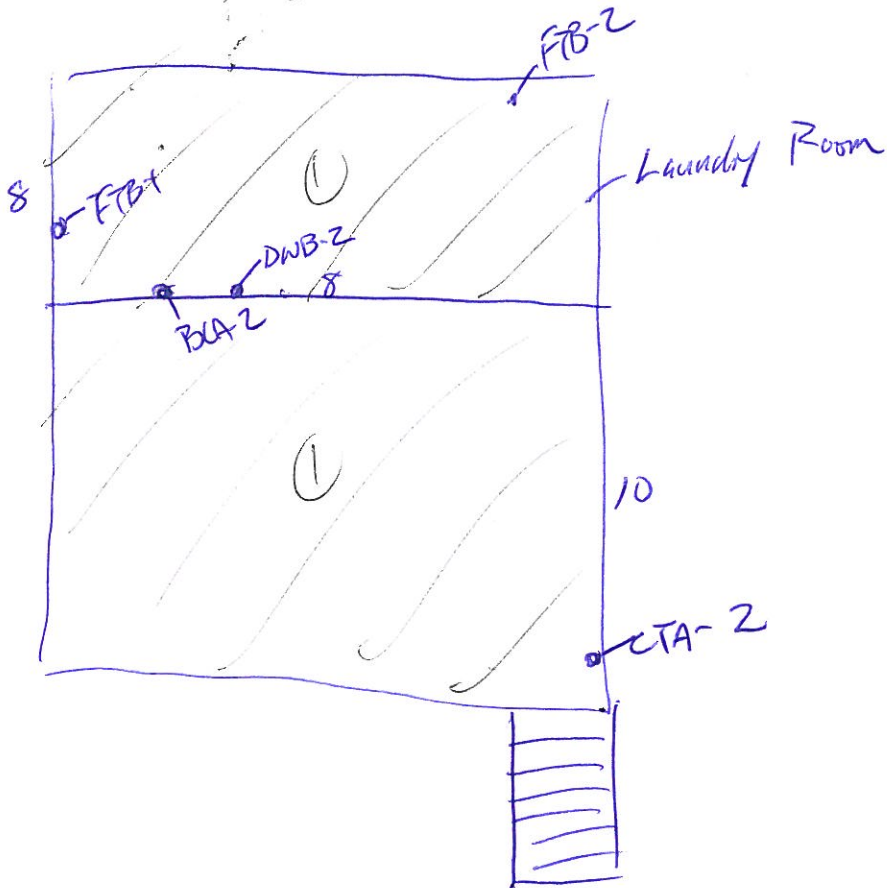
APPENDIX A

Asbestos Sampling and ACM Location Drawings

1st Floor

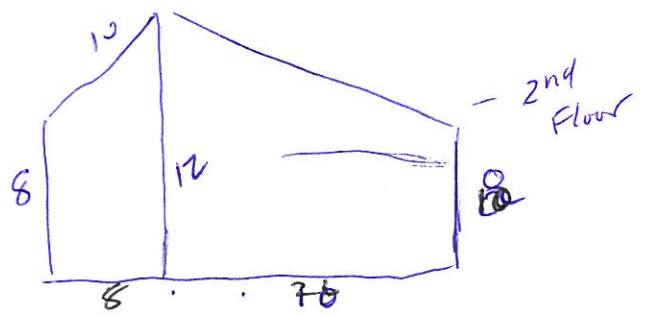
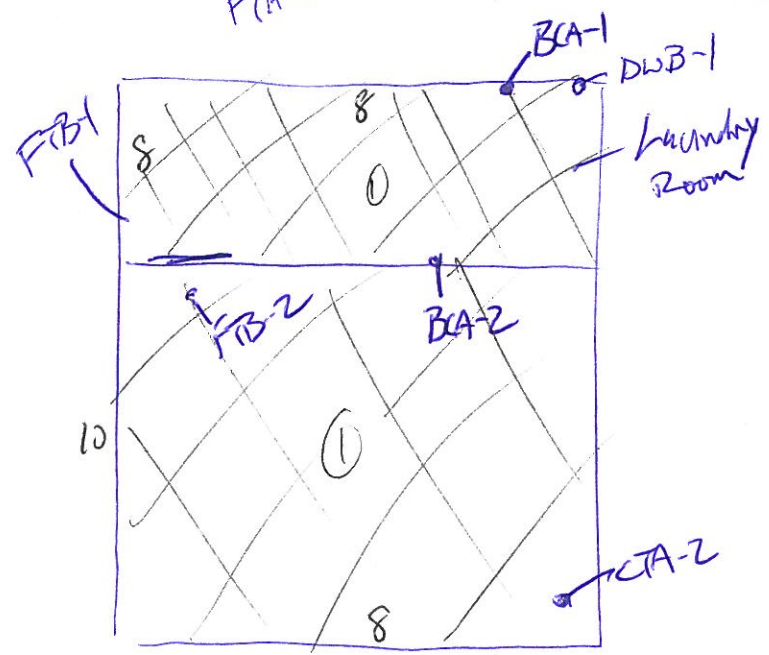
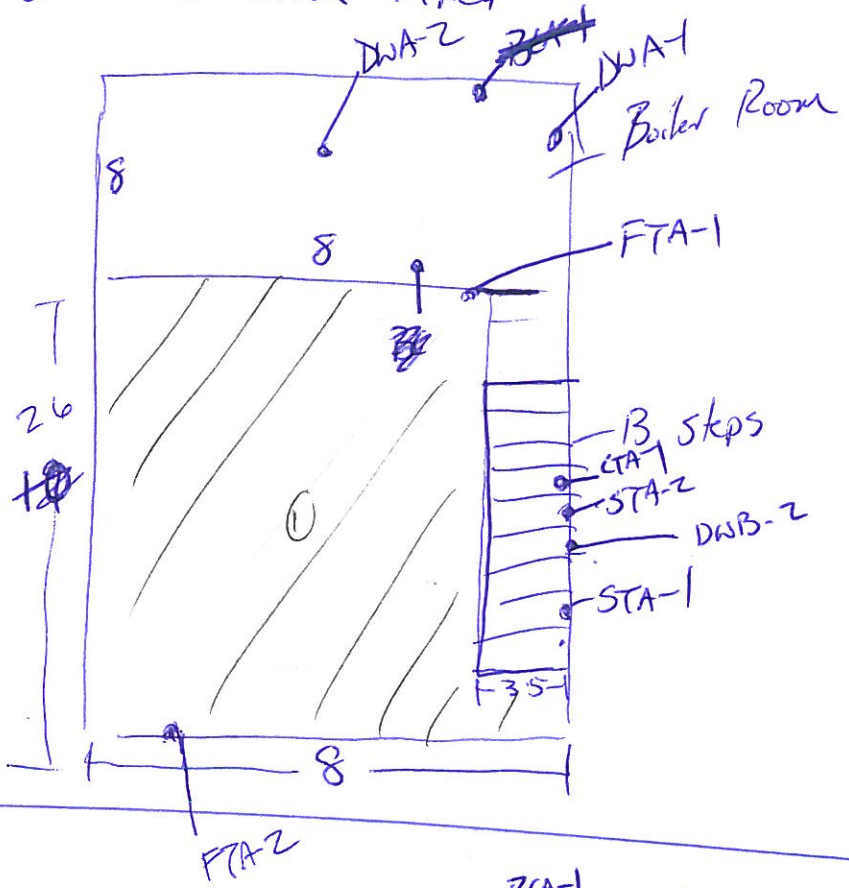
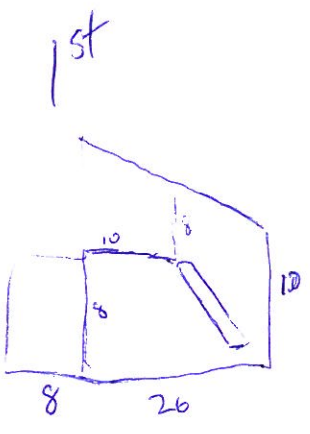


2nd Floor



N ←

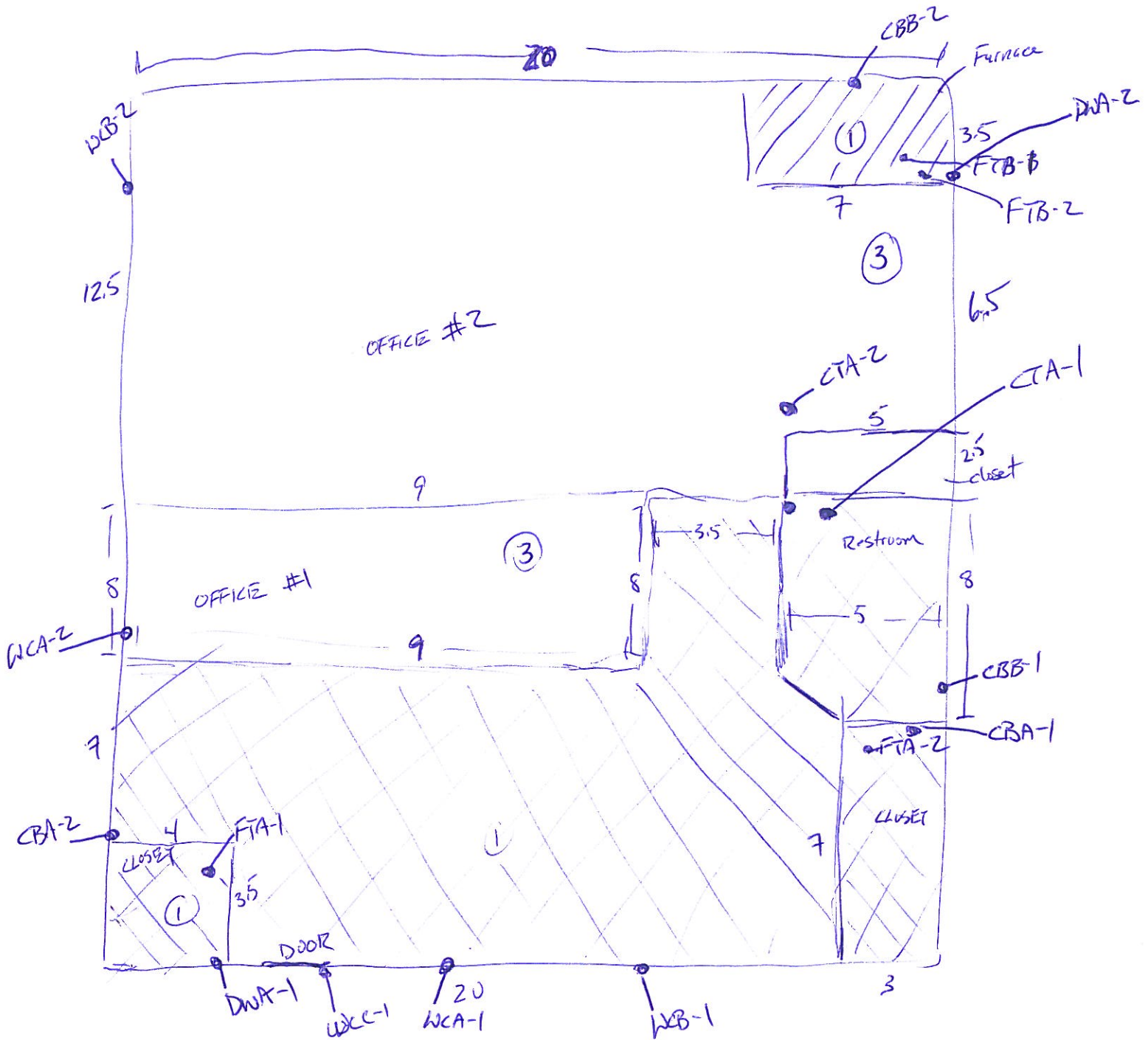
350 Common Area



OFFICE

342

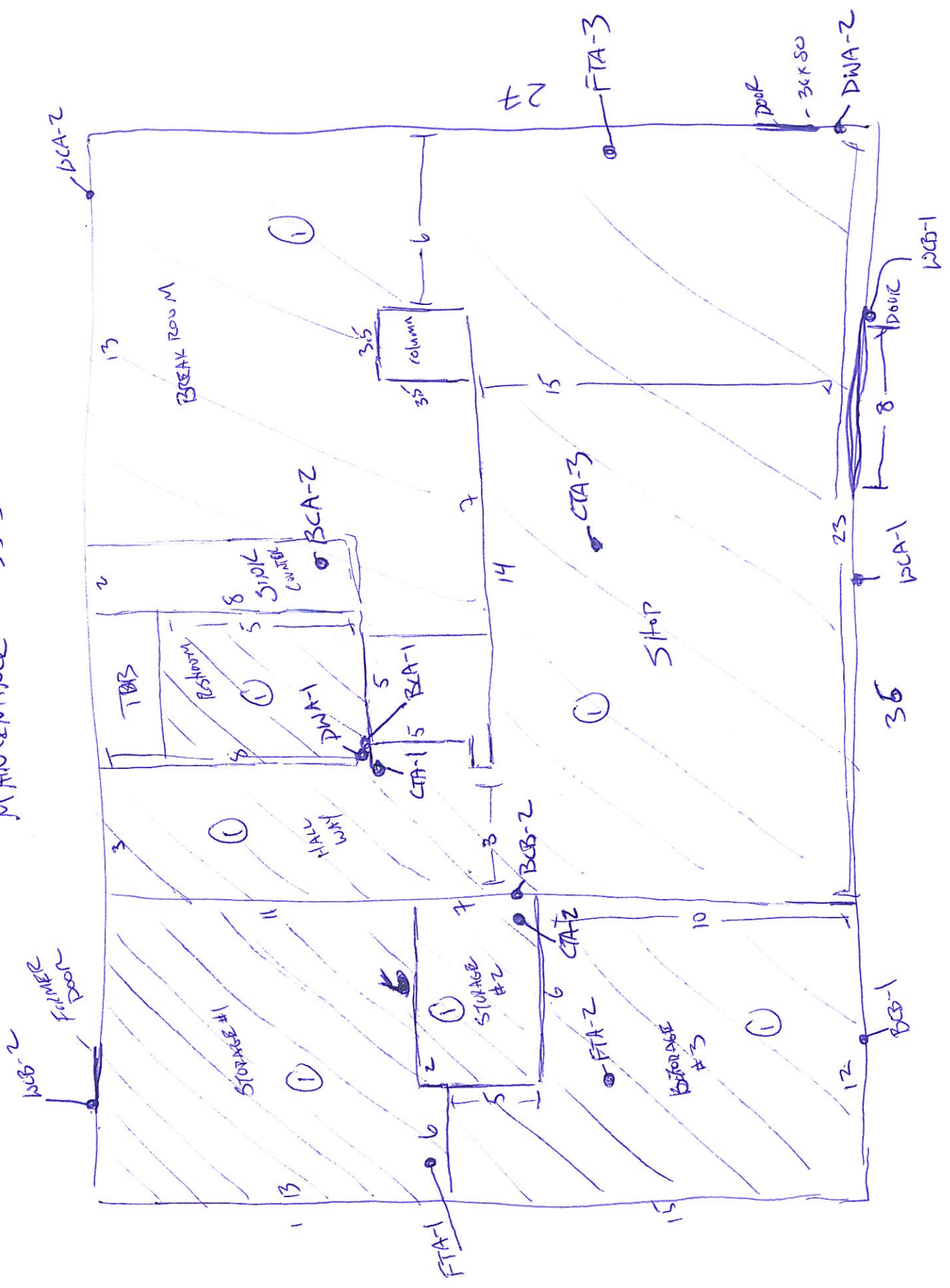
Oak View Court

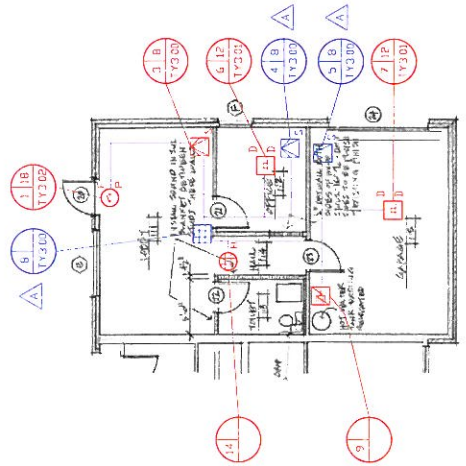


Popcorn ceiling texture throughout
8 ft ceiling

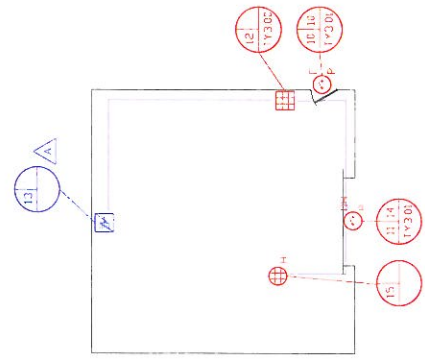
V N

MAINTENANCE 353





OFFICE BUILDING
Note: Drawing does not
reflect current floor plan.



MAINTENANCE BUILDING
Note: Complete floor
plan not available

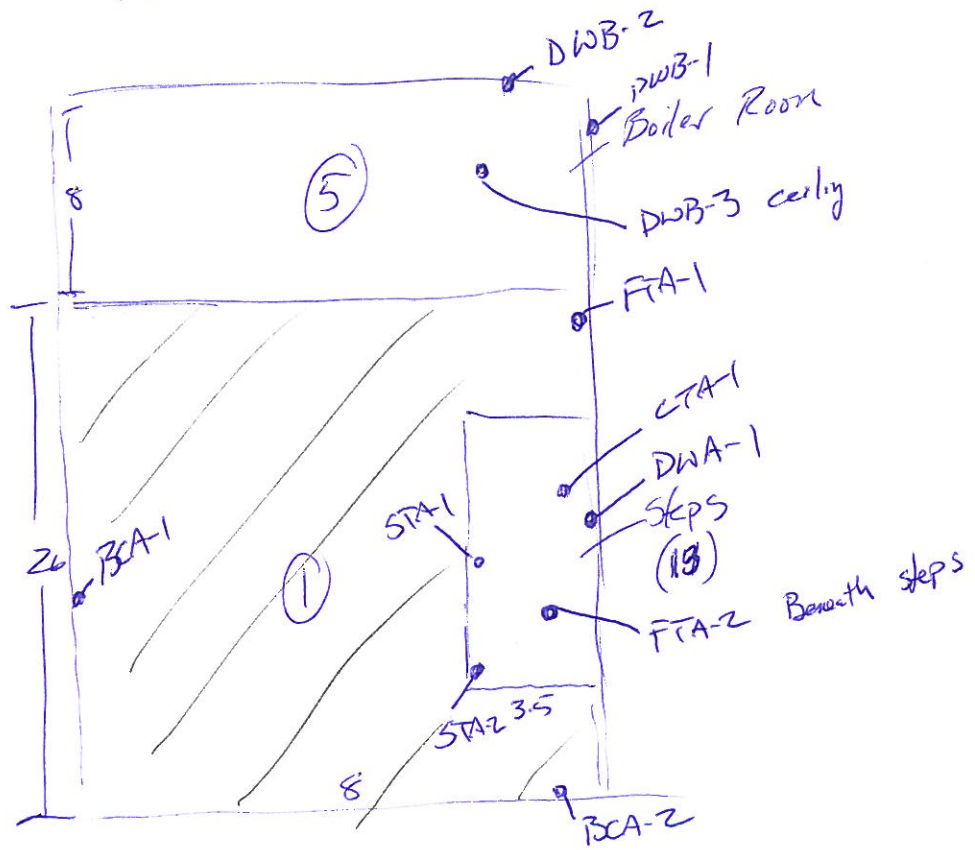
SYMBOL LEGEND

	DOOR CONTACT
	MOTION DETECTOR
	GLASS BREAK SENSOR
	KEYPAD
	PANEL ALARM
	PANEL TAMPER ALARM
	HORN

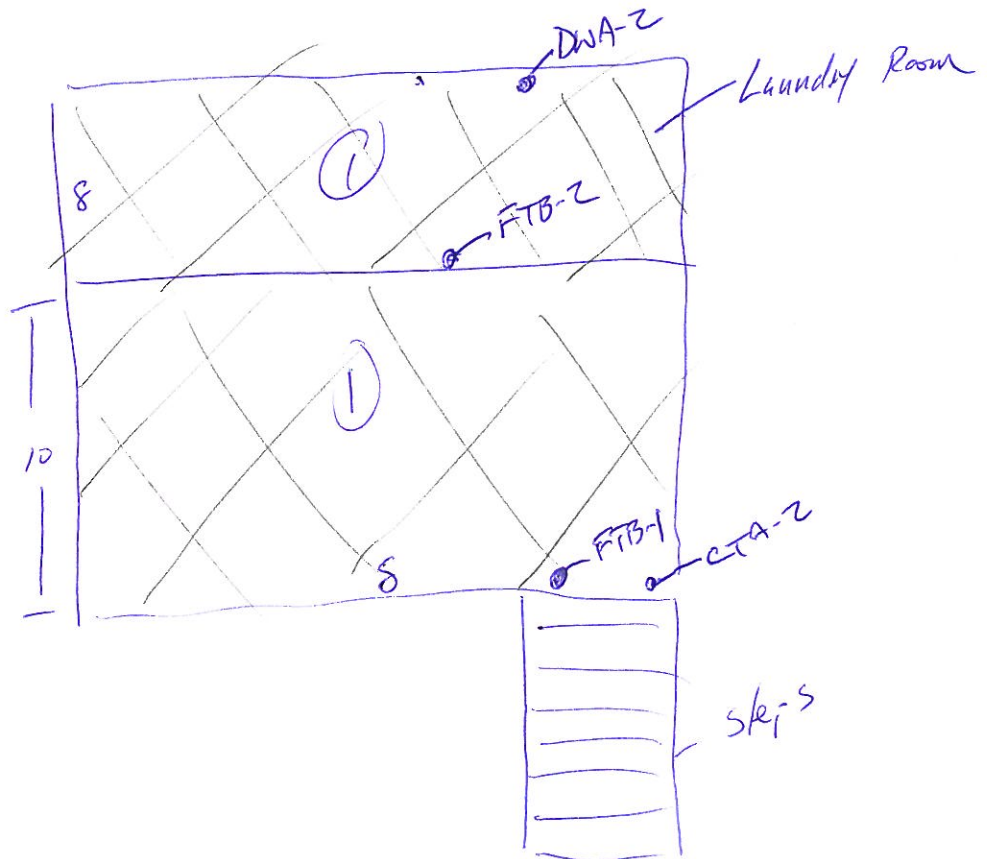
DESIGNED	James B. Prineas, CPP	SCALE	None
DATE	12/18/09	BPS PROJECT NUMBER	1180
REVISION	1.18 (11/30/09)	DATE	12/18/09
REVISION	1.19 (11/30/09)	DATE	12/18/09
REVISION	2.14	DATE	12/18/09
REVISION	3.12 (11/30/09)	DATE	12/18/09
REVISION	4.18 (11/30/09)	DATE	12/18/09
REVISION	5.18 (11/30/09)	DATE	12/18/09
REVISION	6.12 (11/30/09)	DATE	12/18/09
REVISION	7.12 (11/30/09)	DATE	12/18/09
REVISION	8.12 (11/30/09)	DATE	12/18/09
REVISION	9.12 (11/30/09)	DATE	12/18/09

9842 - Common Areas

1st Floor

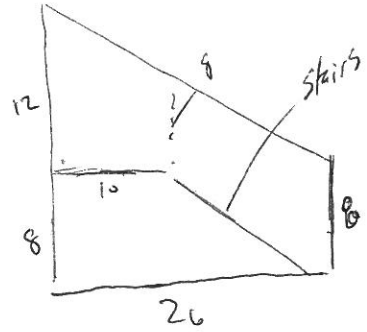
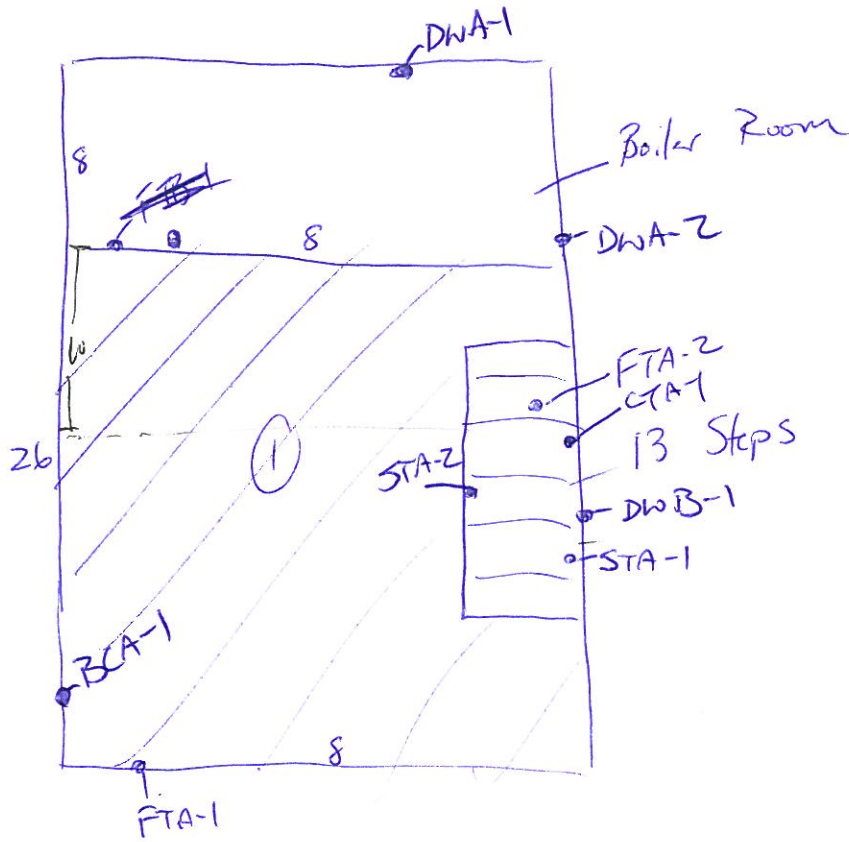


2nd Floor

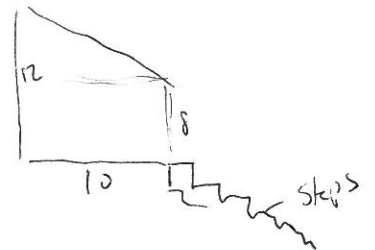
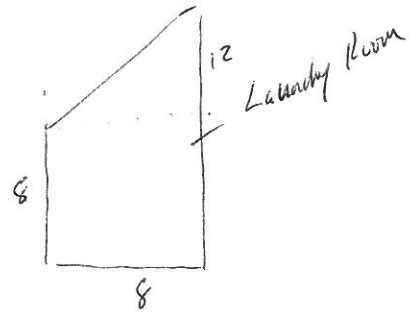
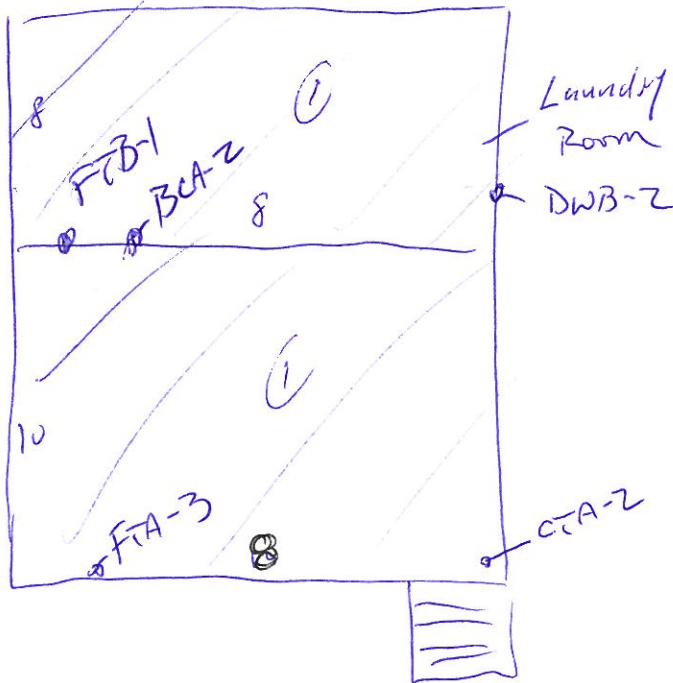


9845 Common Area

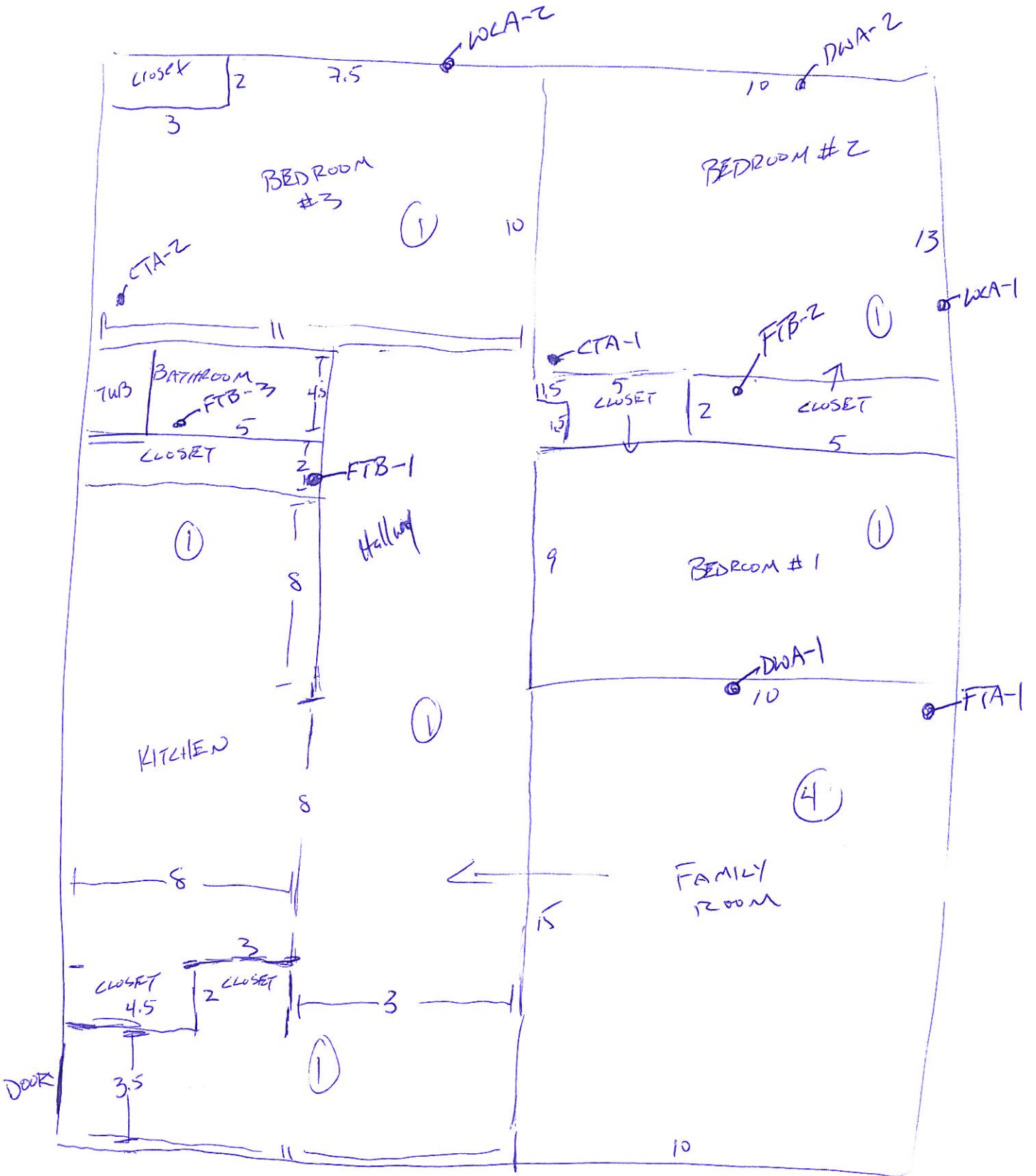
1st



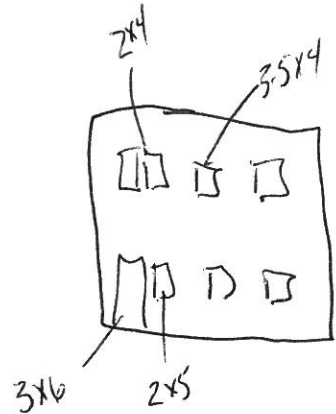
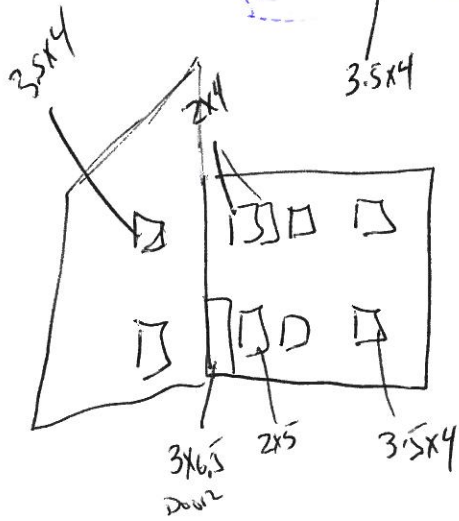
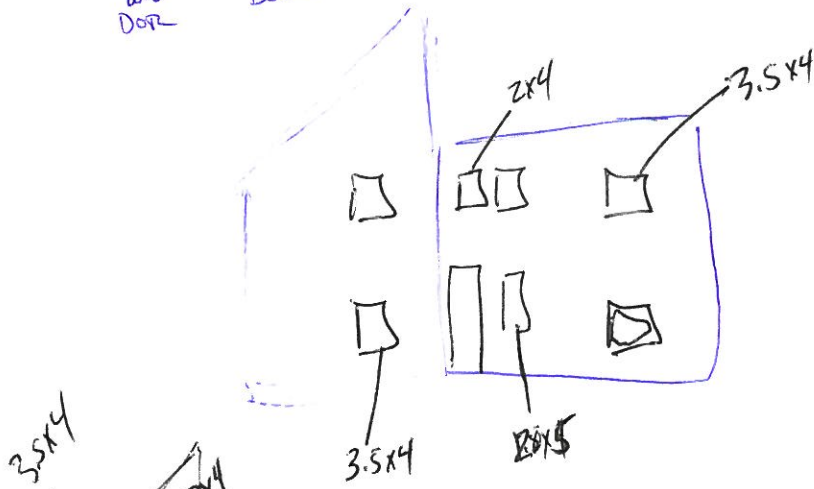
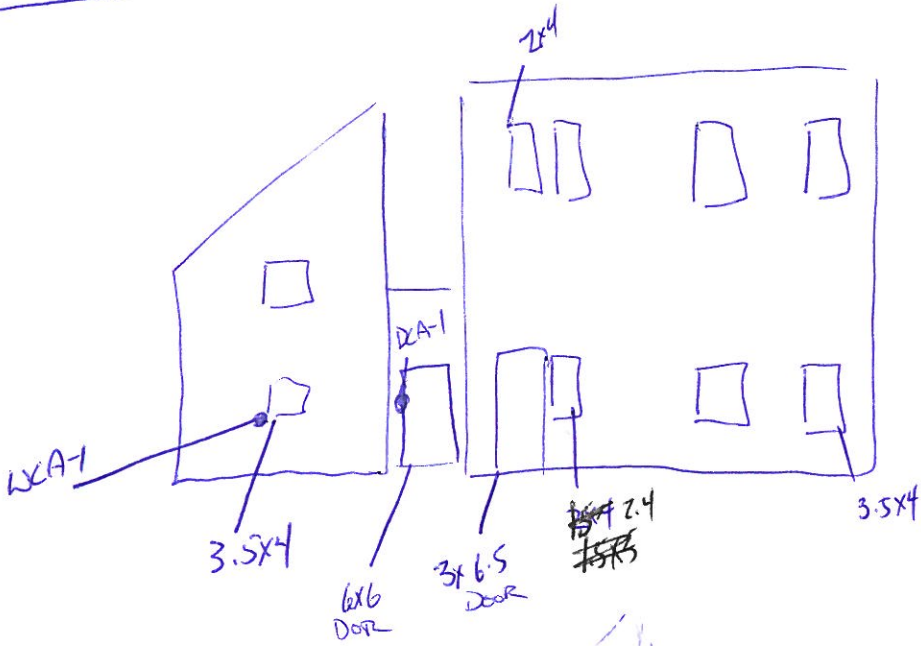
2nd



9842 C Oak Place Court



345 adk Uraw Contt



350 and 345

WBB-
caulk

caulk - door/below windows
along back of siding

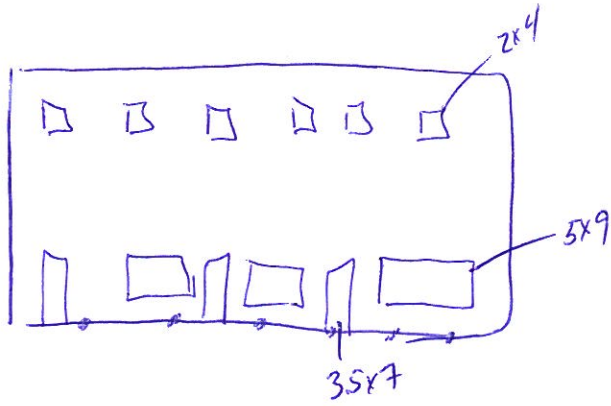
350

~52 (max Ft)

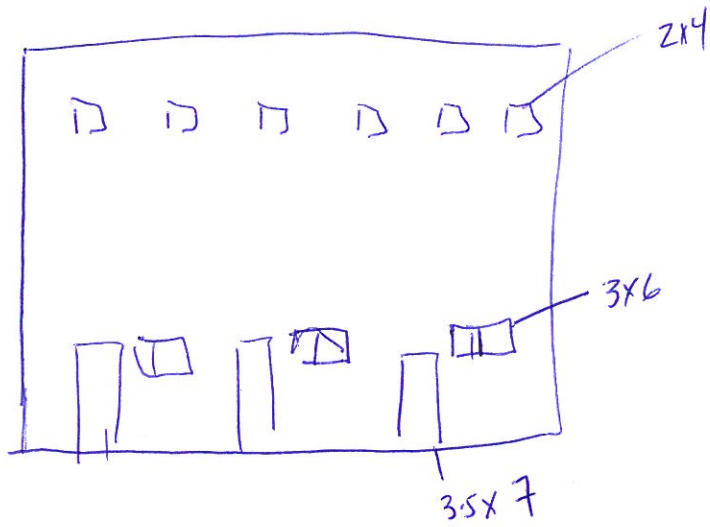
WCC

344-348

South
side

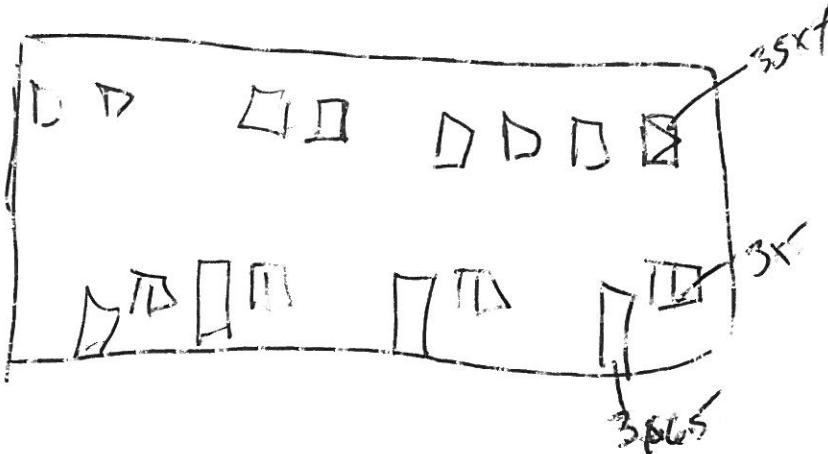
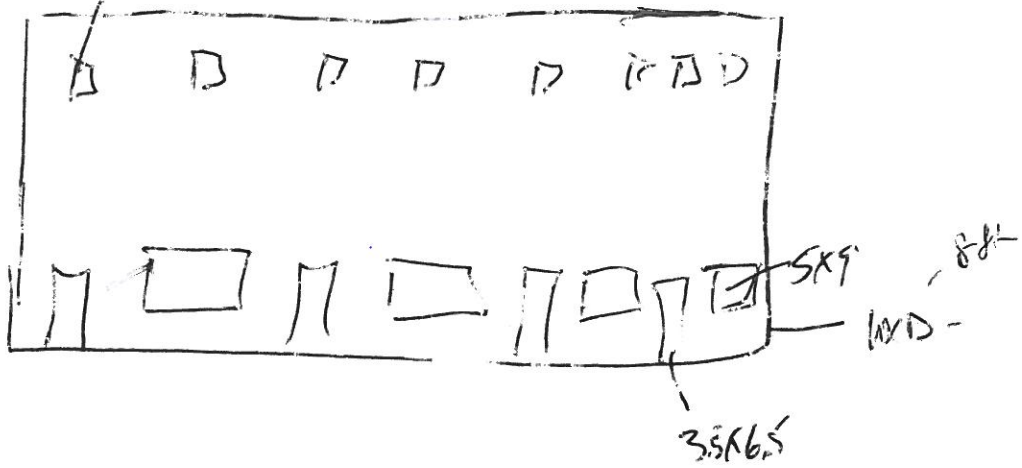


North
Side



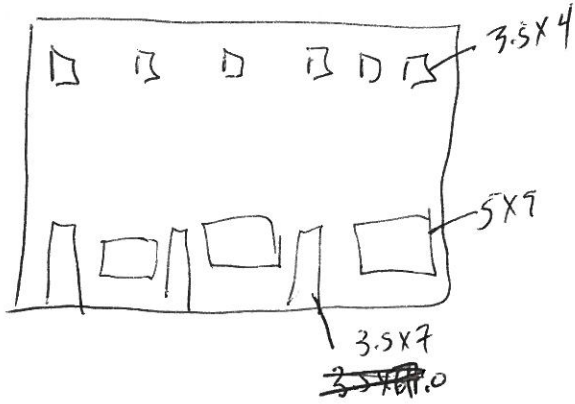
352-358 oak view east

35x4

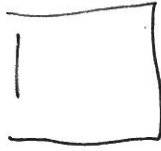


347-351 Oak View Court

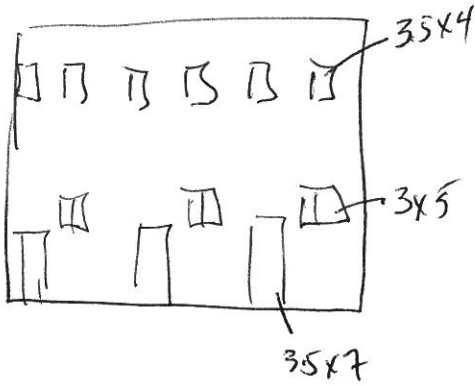
West



North



East



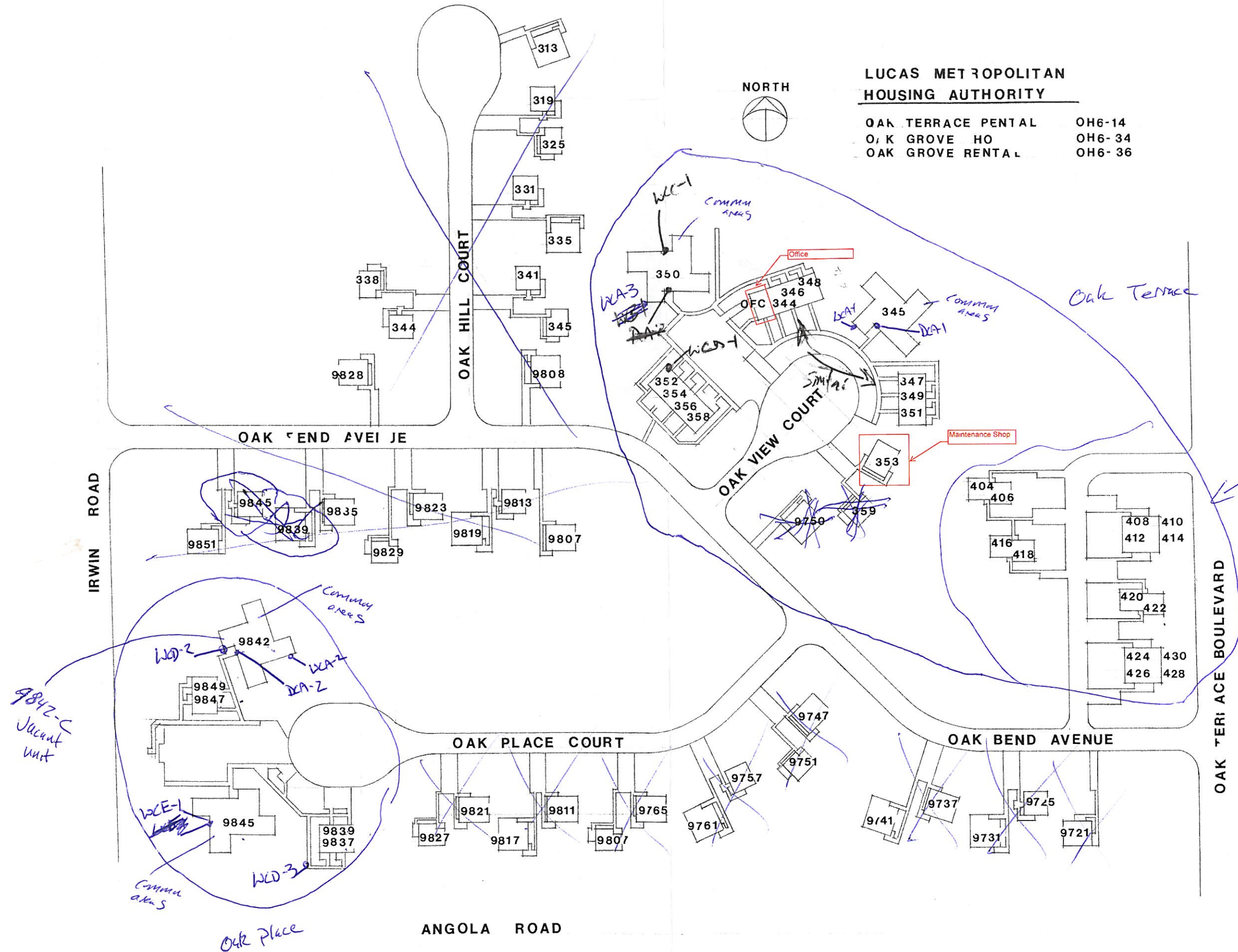
South



LUCAS METROPOLITAN HOUSING AUTHORITY

OAK TERRACE PENTAL OH6-14
 OAK GROVE HO OH6-34
 OAK GROVE RENTAL OH6-36

NORTH



Still need to do

LMHA
 SITE PLAN
 6-6-2000
 COOE 01
 L-0160-14

APPENDIX B

Photos



Photo 1: General view of the facility exterior.



Photo 2: General view of the facility exterior.



Photo 3: General view of the facility exterior.



Photo 4: General view of the facility exterior.



Photo 5: View of common area hallway showing first floor beige floor tile (FTA, non-asbestos) and drywall (DWB, non-asbestos) of 345 Oak View Court.



Photo 6: View of ceiling texture (CTA, non-asbestos) in common area hallways in 345 Oak View Court.



Photo 7: Typical view of brown cove base (BCA, non-asbestos) found throughout the facility common areas.



Photo 8: Typical view of common area boiler room showing drywall in the boiler room and hallway (DWA/DWB, non-asbestos).



Photo 9: Typical view of brown stair tread (STA, non-asbestos) found throughout facility common areas.



Photo 10: View of Oak View Court office building.



Photo 11: View of gray floor tile (FTA, mastic is asbestos containing), brown cove base (CBA, non-asbestos), and drywall (DWA, non-asbestos) in the entryway of the office building.



Photo 12: View of carpet and gray cove base (CBA, non-asbestos) in office building.



Photo 13: Typical view of interior white window caulk (WCA, non-asbestos) found throughout the facility.

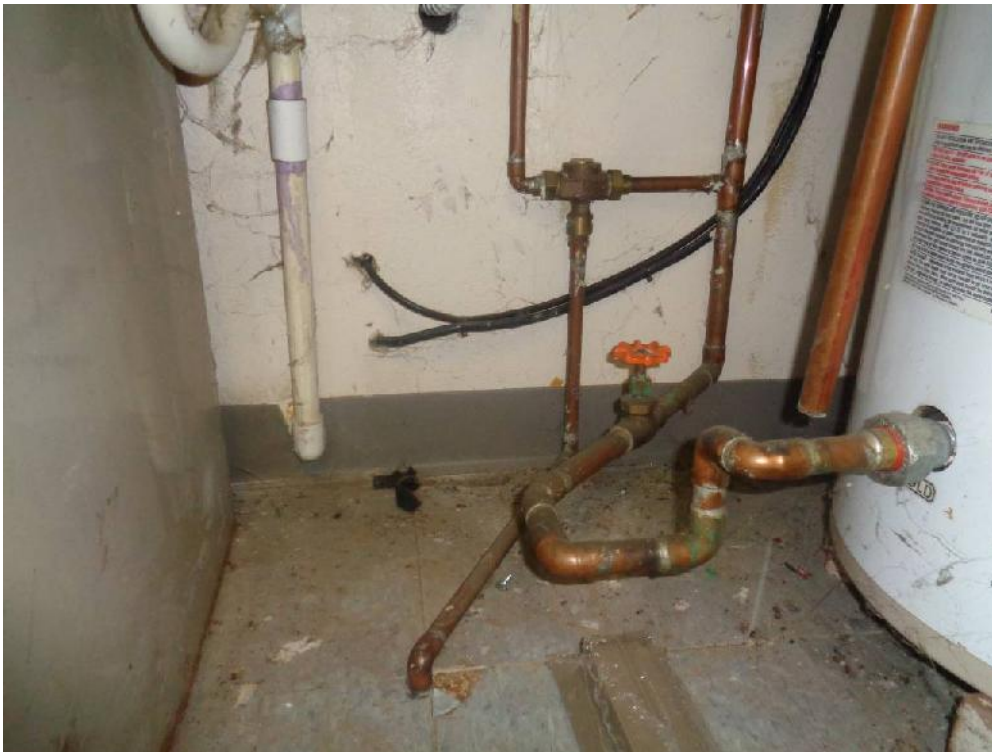


Photo 14: View of gray floor tile (FTB, non-asbestos) in the furnace room of Oak View Office.



Photo 15: View of Oak View Court maintenance building.



Photo 16: View of beige floor tile (FTA, mastic is asbestos containing) found throughout the Oak View Court maintenance building.



Photo 17: View of white ceiling texture (CTA, asbestos containing) found throughout the Oak View Court maintenance building.



Photo 18: View of gray cove base (BCB, non-asbestos) from the storage rooms of the Oak View Court maintenance building.



Photo 19: View of beige floor tile (FTA, mastic is asbestos containing), brown stair tread (STA, non-asbestos), drywall (DWA, non-asbestos), and black cove base (BCA, non-asbestos) from the common areas of 9842 Oak Place Court.



Photo 20: View white ceiling texture (CTA, asbestos containing) from the common areas of 9842 Oak Place Court.



Photo 21: View of beige floor tile (FTA, non-asbestos) from the second floor hallway and laundry room of 9845 Oak Place Court common area.



Photo 22: View of entry door and drywall (DWA, non-asbestos) from Unit C of 9842 Oak Place Court.



Photo 23: View of white ceiling texture (CTA, asbestos containing) from Unit C of 9842 Oak Place Court.



Photo 24: View of beige floor tile (FTB, mastic is asbestos containing) from the kitchen of Unit C of 9842 Oak Place Court.



Photo 25: Typical view of white door caulk (DCA, non-asbestos) of the exterior doors.



Photo 26: Typical view of white window caulk (WCA, non-asbestos) of the exterior windows.

APPENDIX C

Inspector Credentials

LICENSE INFORMATION

License Description: Asbestos Hazard Evaluation Specialist

[Return to Listing](#)

Name and Address

Contractor Name: Kristopher Barnswell
Company Name: Watterson Environmental
Address: 5580 Monroe Street Ste 103
City/State/Zip: Sylvania, OH 43560
Phone: (419) 824-5210

License No.: ES35903
Status: Approved
Expiration Date: 5/6/2016

[View History](#)

APPENDIX D
Analytical Results



Please Reply To:

AmeriSci Richmond

13635 GENITO ROAD
MIDLOTHIAN, VIRGINIA 23112
TEL: (804) 763-1200 • FAX: (804) 763-1800

FACSIMILE TELECOPY TRANSMISSION

To: Dave Dukat
Watterson Environmental Group, LLC
Fax #:
Email: ddukat@wattersonem.com

From: Jean L. Mayes
AmeriSci Job #: 115061849
Subject: PLM 5 day Results
Client Project: 86234.01; 345 Oak View CT -
Common Area

Date: Tuesday, June 23, 2015

Time: 11:01:53

Comments:

Number of Pages: 7
(including cover sheet)

CONFIDENTIALITY NOTICE: Unless otherwise indicated, the information contained in this communication is confidential information intended for use of the individual named above. If the reader of this communication is not the intended recipient, you are hereby notified that any dissemination, distribution or copying of this communication is prohibited. If you have received this communication in error, please immediately notify the sender by telephone and return the original message to the above address via the US Postal Service at our expense. Preliminary data reported here will be verified before final report is issued. Samples are disposed of in 60 days or unless otherwise instructed by the protocol or special instructions in writing. Thank you.

Certified Analysis Service 24 Hours A Day • 7 Days A Week Competitive Prices
visit our web site - www.amerisci.com

Boston • Los Angeles • New York • Richmond



AmeriSci Richmond

13635 GENITO ROAD
MIDLOTHIAN, VIRGINIA 23112
TEL: (804) 763-1200 • FAX: (804) 763-1800

PLM Bulk Asbestos Report

Watterson Environmental Group, LLC
Attn: Dave Dukat
5800 Monroe Street, Bldg A-2

Sylvania, OH 43560

Date Received 06/17/15 **AmeriSci Job #** 115061849
Date Examined 06/23/15 **P.O. #**
Page 1 of 5
RE: 86234.01; 345 Oak View CT - Common Area

Client No. / HGA	Lab No.	Asbestos Present	Total % Asbestos
FTA-1 Location: 12x12 Beige FT w/Black Mastic; 1st Hallway Analyst Description: Brown, Heterogeneous, Non-Fibrous, Floor Tile Asbestos Types: Other Material: Non-fibrous 100 %	115061849-01.1	No	NAD (by CVES) by Jean L. Mayes on 06/23/15
FTA-1 Location: 12x12 Beige FT w/Black Mastic; 1st Hallway Analyst Description: Yellow, Heterogeneous, Non-Fibrous, Mastic Asbestos Types: Other Material: Non-fibrous 100 %	115061849-01.2	No	NAD (by CVES) by Jean L. Mayes on 06/23/15
FTA-2 Location: 12x12 Beige FT w/Black Mastic; 1st Hallway Analyst Description: Brown, Heterogeneous, Non-Fibrous, Floor Tile Asbestos Types: Other Material: Non-fibrous 100 %	115061849-02.1	No	NAD (by CVES) by Jean L. Mayes on 06/23/15
FTA-2 Location: 12x12 Beige FT w/Black Mastic; 1st Hallway Analyst Description: Mastic Asbestos Types: Other Material: Comment: Quantity Insufficient For Analysis	115061849-02.2		NA

PLM Bulk Asbestos Report

86234.01; 345 Oak View CT - Common Area

Client No. / HGA	Lab No.	Asbestos Present	Total % Asbestos
FTB-1	115061849-03.1	No	NAD
<p>Location: 12x12 Beige FT w/Yellow Mastic; 2nd Floor Hallway and Laundry</p> <p>Analyst Description: Brown, Heterogeneous, Non-Fibrous, Floor Tile</p> <p>Asbestos Types:</p> <p>Other Material: Non-fibrous 100 %</p>			<p>(by CVES) by Jean L. Mayes on 06/23/15</p>
FTB-1	115061849-03.2		NA
<p>Location: 12x12 Beige FT w/Yellow Mastic; 2nd Floor Hallway and Laundry</p> <p>Analyst Description: Mastic</p> <p>Asbestos Types:</p> <p>Other Material:</p> <p>Comment: Quantity Insufficient For Analysis</p>			
FTB-2	115061849-04.1	No	NAD
<p>Location: 12x12 Beige FT w/Yellow Mastic; 2nd Floor Hallway and Laundry</p> <p>Analyst Description: Brown, Heterogeneous, Non-Fibrous, Floor Tile</p> <p>Asbestos Types:</p> <p>Other Material: Non-fibrous 100 %</p>			<p>(by CVES) by Jean L. Mayes on 06/23/15</p>
FTB-2	115061849-04.2		NA
<p>Location: 12x12 Beige FT w/Yellow Mastic; 2nd Floor Hallway and Laundry</p> <p>Analyst Description: Mastic</p> <p>Asbestos Types:</p> <p>Other Material:</p> <p>Comment: Quantity Insufficient For Analysis</p>			
CTA-1	115061849-05	No	NAD
<p>Location: Ceiling Texture; Hallway 1st 2nd</p> <p>Analyst Description: White, Heterogeneous, Non-Fibrous, Bulk Material</p> <p>Asbestos Types:</p> <p>Other Material: Non-fibrous 100 %</p>			<p>(by CVES) by Jean L. Mayes on 06/23/15</p>

Client Name: Watterson Environmental Group, LLC

PLM Bulk Asbestos Report

86234.01; 345 Oak View CT - Common Area

Client No. / HGA	Lab No.	Asbestos Present	Total % Asbestos
CTA-2 Location: Ceiling Texture; Hallway 1st 2nd	115061849-06	No	NAD (by CVES) by Jean L. Mayes on 06/23/15
Analyst Description: White, Heterogeneous, Non-Fibrous, Bulk Material			
Asbestos Types:			
Other Material: Non-fibrous 100 %			
BCA-1 Location: Brown Base Cove w/Yellow Mastic; Hallway 1st 2nd	115061849-07.1	No	NAD (by CVES) by Jean L. Mayes on 06/23/15
Analyst Description: Brown, Heterogeneous, Non-Fibrous, Base Cove			
Asbestos Types:			
Other Material: Non-fibrous 100 %			
BCA-1 Location: Brown Base Cove w/Yellow Mastic; Hallway 1st 2nd	115061849-07.2	No	NAD (by CVES) by Jean L. Mayes on 06/23/15
Analyst Description: Yellow, Heterogeneous, Non-Fibrous, Mastic			
Asbestos Types:			
Other Material: Non-fibrous 100 %			
BCA-2 Location: Brown Base Cove w/Yellow Mastic; Hallway 1st 2nd	115061849-08.1	No	NAD (by CVES) by Jean L. Mayes on 06/23/15
Analyst Description: Brown, Heterogeneous, Non-Fibrous, Base Cove			
Asbestos Types:			
Other Material: Non-fibrous 100 %			
BCA-2 Location: Brown Base Cove w/Yellow Mastic; Hallway 1st 2nd	115061849-08.2	No	NAD (by CVES) by Jean L. Mayes on 06/23/15
Analyst Description: Yellow, Heterogeneous, Non-Fibrous, Mastic			
Asbestos Types:			
Other Material: Non-fibrous 100 %			
DWA-1 Location: Drywall w/Joint Compound; Boiler Room	115061849-09	No	NAD (by CVES) by Jean L. Mayes on 06/23/15
Analyst Description: White/Brown, Heterogeneous, Non-Fibrous, Drywall			
Asbestos Types:			
Other Material: Cellulose 10 %, Fibrous glass 4 %, Non-fibrous 86 %			
Comment: No Joint Compound Found			

See Reporting notes on last page

Client Name: Watterson Environmental Group, LLC

PLM Bulk Asbestos Report

86234.01; 345 Oak View CT - Common Area

Client No. / HGA	Lab No.	Asbestos Present	Total % Asbestos
DWA-2 Location: Drywall w/Joint Compound; Boiler Room	115061849-10.1	No	NAD (by CVES) by Jean L. Mayes on 06/23/15
Analyst Description: White/Brown, Heterogeneous, Non-Fibrous, Drywall			
Asbestos Types:			
Other Material: Cellulose 10 %, Fibrous glass 5 %, Non-fibrous 85 %			
DWA-2 Location: Drywall w/Joint Compound; Boiler Room	115061849-10.2		NA
Analyst Description: Joint Compound			
Asbestos Types:			
Other Material:			
Comment: Quantity Insufficient For Analysis			
DWB-1 Location: Drywall w/Joint Compound; 1st 2nd Hallway Laundry Room	115061849-11	No	NAD (by CVES) by Jean L. Mayes on 06/23/15
Analyst Description: White/Brown, Heterogeneous, Non-Fibrous, Drywall			
Asbestos Types:			
Other Material: Cellulose 10 %, Non-fibrous 90 %			
Comment: No Joint Compound Found			
DWB-2 Location: Drywall w/Joint Compound; 1st 2nd Hallway Laundry Room	115061849-12.1	No	NAD (by CVES) by Jean L. Mayes on 06/23/15
Analyst Description: Brown, Heterogeneous, Non-Fibrous, Drywall			
Asbestos Types:			
Other Material: Cellulose 10 %, Non-fibrous 90 %			
DWB-2 Location: Drywall w/Joint Compound; 1st 2nd Hallway Laundry Room	115061849-12.2	No	NAD (by CVES) by Jean L. Mayes on 06/23/15
Analyst Description: White, Heterogeneous, Non-Fibrous, Joint Compound			
Asbestos Types:			
Other Material: Non-fibrous 100 %			

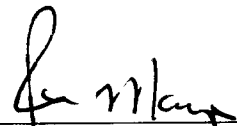
Client Name: Watterson Environmental Group, LLC

PLM Bulk Asbestos Report

86234.01; 345 Oak View CT - Common Area

Reporting Notes:

Analyzed by: Jean L. Mayes



Date

6/23/15

*NAD = no asbestos detected, Detection Limit <1%, Reporting Limits: CVES = 1%, 400 Pt Ct = 0.25%, 1000 Pt Ct = 0.1%; "Present" or NVA = "No Visible Asbestos" are observations made during a qualitative analysis; NA = not analyzed; NA/PS = not analyzed / positive stop; PLM Bulk Asbestos Analysis by EPA 600/R-93/116 per 40 CFR 763 (NVLAP Lab Code 101904-0) and ELAP PLM Analysis Protocol 198.1 for New York friable samples which includes quantitation of any vermiculite observed (198.6 for NOB samples) or EPA 400 pt ct by EPA 600/M4-82-020 (NYSDOH ELAP Lab # 10984); CA ELAP Lab # 2508; Note: PLM is not consistently reliable in detecting asbestos in floor coverings and similar NOB materials. NAD or Trace results by PLM are inconclusive, TEM is currently the only method that can be used to determine if this material can be considered or treated as non-asbestos-containing in New York State (also see EPA Advisory for floor tile, FR 59, 146, 38970, 8/1/94). NIST Accreditation requirements mandate that this report must not be reproduced except in full without the approval of the laboratory. This PLM report relates ONLY to the items tested.

Reviewed By: _____

115061849

Watterson Environmental and Facilities Management

5580 Monroe St., Suite 103, Sylvania, Ohio 43560
 Phone - (419) 824-5210 Fax - (419) 824-5220

Asbestos Bulk Sample Log

Date of Survey: 6/11/15 Lab. Analysis: PLM
 Project No.: 86234-01 Turnaround Time: _____
 Project: Old View Ct - Common Area Page 1 Of _____
 Contact Person: Dave Dulest

Sample Number	HSA Number	Material	Functional Area	Sample Location
FTA-1	FTA	12x12 Beige FT w/	1st Hallway	South wall
FTA-2	FTA	black mastic	↓	Beneath Steps
FTB-1	FTB	12x12 Beige FT w/	2nd Floor Hallway	Laundry room west wall
FTB-2	FTB	Yellow meshic	and Laundry	Laundry room NE corner
CTA-1	CTA	Ceiling texture	Hallway 1st 2nd	1st Floor beneath Steps
CTA-2	CTA	↓	↓	2nd Floor top of Steps
BEA-1	BEA	Brown base coat	Hallway 1st 2nd	1st beneath Steps
BEA-2	BEA	w/ yellow mastic	laundry	Laundry room South wall
DWA-1	DWA	Pyrex w/ joint compound	Poker Room	North wall
DWA-2	DWA	↓	↓	East wall
DWB-1	DWB	Drywall w/ joint	1st 2nd Hallway	1st beneath Steps
DWB-2	DWB	compound	Laundry Room	Laundry Room, South wall

RECEIVED
 JUN 17 2015
 BY: KM

Relinquished By: Dulest Received By: _____
 Date: 6/11/15 Date: _____
 Relinquished By: _____ Date: _____



Please Reply To:

AmeriSci Richmond

13635 GENITO ROAD
MIDLOTHIAN, VIRGINIA 23112
TEL: (804) 763-1200 • FAX: (804) 763-1800

FACSIMILE TELECOPY TRANSMISSION

To: Dave Dukat
Watterson Environmental Group, LLC
Fax #:
Email: ddukat@wattersonem.com

From: Jean L. Mayes
AmeriSci Job #: 115061854
Subject: PLM 5 day Results
Client Project: 86234.01; 350 Oak View CT -
Common Area

Date: Tuesday, June 23, 2015
Time: 16:04:09

Number of Pages: 7
(including cover sheet)

Comments:

CONFIDENTIALITY NOTICE: Unless otherwise indicated, the information contained in this communication is confidential information intended for use of the individual named above. If the reader of this communication is not the intended recipient, you are hereby notified that any dissemination, distribution or copying of this communication is prohibited. If you have received this communication in error, please immediately notify the sender by telephone and return the original message to the above address via the US Postal Service at our expense. Preliminary data reported here will be verified before final report is issued. Samples are disposed of in 60 days or unless otherwise instructed by the protocol or special instructions in writing. Thank you.

Certified Analysis Service 24 Hours A Day • 7 Days A Week Competitive Prices
visit our web site - www.amerisci.com

Boston • Los Angeles • New York • Richmond



AmeriSci Richmond

13635 GENITO ROAD
MIDLOTHIAN, VIRGINIA 23112
TEL: (804) 763-1200 • FAX: (804) 763-1800

PLM Bulk Asbestos Report

Watterson Environmental Group, LLC
Attn: Dave Dukat
5800 Monroe Street, Bldg A-2

Sylvania, OH 43560

Date Received 06/17/15 **AmeriSci Job #** 115061854
Date Examined 06/23/15 **P.O. #**
Page 1 **of** 5
RE: 86234.01; 350 Oak View CT - Common Area

Client No. / HGA	Lab No.	Asbestos Present	Total % Asbestos
BCA-1 Location: Brown Base Cove w/Yellow Mastic; Laundry Room	115061854-01.1	No	NAD (by CVES) by Jean L. Mayes on 06/23/15
Analyst Description: Brown, Heterogeneous, Non-Fibrous, Base Cove Asbestos Types: Other Material: Non-fibrous 100 %			
BCA-1 Location: Brown Base Cove w/Yellow Mastic; Laundry Room	115061854-01.2	No	NAD (by CVES) by Jean L. Mayes on 06/23/15
Analyst Description: Tan, Heterogeneous, Non-Fibrous, Mastic Asbestos Types: Other Material: Non-fibrous 100 %			
BCA-2 Location: Brown Base Cove w/Yellow Mastic; Laundry Room	115061854-02.1	No	NAD (by CVES) by Jean L. Mayes on 06/23/15
Analyst Description: Brown, Heterogeneous, Non-Fibrous, Base Cove Asbestos Types: Other Material: Non-fibrous 100 %			
BCA-2 Location: Brown Base Cove w/Yellow Mastic; Laundry Room	115061854-02.2	No	NAD (by CVES) by Jean L. Mayes on 06/23/15
Analyst Description: Tan, Heterogeneous, Non-Fibrous, Mastic Asbestos Types: Other Material: Non-fibrous 100 %			
CTA-1 Location: White Ceiling Texture; Hallway 1st and 2nd	115061854-03	No	NAD (by CVES) by Jean L. Mayes on 06/23/15
Analyst Description: White, Heterogeneous, Non-Fibrous, Bulk Material Asbestos Types: Other Material: Non-fibrous 100 %			

Client Name: Watterson Environmental Group, LLC

PLM Bulk Asbestos Report

86234.01; 350 Oak View CT - Common Area

Client No. / HGA	Lab No.	Asbestos Present	Total % Asbestos
CTA-2 Location: White Ceiling Texture; Hallway 1st and 2nd	115061854-04	Yes	2 % (by CVES) by Jean L. Mayes on 06/23/15
Analyst Description: White, Heterogeneous, Non-Fibrous, Bulk Material Asbestos Types: Chrysotile 2.0 % Other Material: Non-fibrous 98 %			
DWA-1 Location: White Drywall w/Joint Compound; Boiler Room	115061854-05.1	No	NAD (by CVES) by Jean L. Mayes on 06/23/15
Analyst Description: White/Brown, Heterogeneous, Non-Fibrous, Drywall Asbestos Types: Other Material: Cellulose 10 %, Non-fibrous 90 %			
DWA-1 Location: White Drywall w/Joint Compound; Boiler Room	115061854-05.2	No	NAD (by CVES) by Jean L. Mayes on 06/23/15
Analyst Description: White, Heterogeneous, Non-Fibrous, Joint Compound Asbestos Types: Other Material: Non-fibrous 100 %			
DWA-2 Location: White Drywall w/Joint Compound; Boiler Room	115061854-06.1	No	NAD (by CVES) by Jean L. Mayes on 06/23/15
Analyst Description: White, Heterogeneous, Non-Fibrous, Drywall Asbestos Types: Other Material: Fibrous glass 3 %, Non-fibrous 97 %			
DWA-2 Location: White Drywall w/Joint Compound; Boiler Room	115061854-06.2	No	NAD (by CVES) by Jean L. Mayes on 06/23/15
Analyst Description: White, Heterogeneous, Non-Fibrous, Joint Compound Asbestos Types: Other Material: Non-fibrous 100 %			
DWB-1 Location: White Drywall w/Joint Compound; Hallway and Laundry	115061854-07.1	No	NAD (by CVES) by Jean L. Mayes on 06/23/15
Analyst Description: Brown, Heterogeneous, Non-Fibrous, Drywall Asbestos Types: Other Material: Cellulose 10 %, Fibrous glass 3 %, Non-fibrous 87 %			

Client Name: Watterson Environmental Group, LLC

PLM Bulk Asbestos Report

86234.01; 350 Oak View CT - Common Area

Client No. / HGA	Lab No.	Asbestos Present	Total % Asbestos
DWB-1 Location: White Drywall w/Joint Compound; Hallway and Laundry	115061854-07.2	No	NAD (by CVES) by Jean L. Mayes on 06/23/15
Analyst Description: White, Heterogeneous, Non-Fibrous, Joint Compound Asbestos Types: Other Material: Fibrous glass 5 %, Non-fibrous 95 %			
DWB-2 Location: White Drywall w/Joint Compound; Hallway and Laundry	115061854-08.1	No	NAD (by CVES) by Jean L. Mayes on 06/23/15
Analyst Description: White/Brown, Heterogeneous, Non-Fibrous, Drywall Asbestos Types: Other Material: Non-fibrous 100 %			
DWB-2 Location: White Drywall w/Joint Compound; Hallway and Laundry	115061854-08.2	No	NAD (by CVES) by Jean L. Mayes on 06/23/15
Analyst Description: White, Heterogeneous, Non-Fibrous, Joint Compound Asbestos Types: Other Material: Non-fibrous 100 %			
FTA-1 Location: 12x12 Beige FT w/Black Mastic; 1st Floor Hallway	115061854-09.1	No	NAD (by CVES) by Jean L. Mayes on 06/23/15
Analyst Description: Beige, Heterogeneous, Non-Fibrous, Floor Tile Asbestos Types: Other Material: Non-fibrous 100 %			
FTA-1 Location: 12x12 Beige FT w/Black Mastic; 1st Floor Hallway	115061854-09.2	Yes	3 % (by CVES) by Jean L. Mayes on 06/23/15
Analyst Description: Black, Heterogeneous, Non-Fibrous, Mastic Asbestos Types: Chrysotile 3.0 % Other Material: Cellulose 2 %, Non-fibrous 95 %			
FTA-2 Location: 12x12 Beige FT w/Black Mastic; 1st Floor Hallway	115061854-10.1	No	NAD (by CVES) by Jean L. Mayes on 06/23/15
Analyst Description: Beige, Heterogeneous, Non-Fibrous, Floor Tile Asbestos Types: Other Material: Non-fibrous 100 %			

Client Name: Watterson Environmental Group, LLC

PLM Bulk Asbestos Report

86234.01; 350 Oak View CT - Common Area

Client No. / HGA	Lab No.	Asbestos Present	Total % Asbestos
FTA-2	115061854-10.2	Yes	3 %
Location: 12x12 Beige FT w/Black Mastic; 1st Floor Hallway			(by CVES) by Jean L. Mayes on 06/23/15
Analyst Description: Black, Heterogeneous, Non-Fibrous, Mastic			
Asbestos Types: Chrysotile 3.0 %			
Other Material: Non-fibrous 97 %			
FTB-1	115061854-11.1	No	NAD
Location: 12x12 Beige FT w/Yellow Mastic; 2nd Floor Hallway Laundry Room			(by CVES) by Jean L. Mayes on 06/23/15
Analyst Description: Beige, Heterogeneous, Non-Fibrous, Floor Tile			
Asbestos Types:			
Other Material: Non-fibrous 100 %			
FTB-1	115061854-11.2	No	NAD
Location: 12x12 Beige FT w/Yellow Mastic; 2nd Floor Hallway Laundry Room			(by CVES) by Jean L. Mayes on 06/23/15
Analyst Description: Yellow, Heterogeneous, Non-Fibrous, Mastic			
Asbestos Types:			
Other Material: Cellulose 2 %, Non-fibrous 98 %			
FTB-2	115061854-12.1	No	NAD
Location: 12x12 Beige FT w/Yellow Mastic; 2nd Floor Hallway Laundry Room			(by CVES) by Jean L. Mayes on 06/23/15
Analyst Description: Beige, Heterogeneous, Non-Fibrous, Floor Tile			
Asbestos Types:			
Other Material: Non-fibrous 100 %			
FTB-2	115061854-12.2	No	NAD
Location: 12x12 Beige FT w/Yellow Mastic; 2nd Floor Hallway Laundry Room			(by CVES) by Jean L. Mayes on 06/23/15
Analyst Description: Yellow, Heterogeneous, Non-Fibrous, Mastic			
Asbestos Types:			
Other Material: Cellulose 2 %, Non-fibrous 98 %			
STA-1	115061854-13.1	No	NAD
Location: Brown Stair Tread w/Yellow Mastic; Hallway			(by CVES) by Jean L. Mayes on 06/23/15
Analyst Description: Brown, Heterogeneous, Non-Fibrous, Stair Tread			
Asbestos Types:			
Other Material: Non-fibrous 100 %			

Client Name: Watterson Environmental Group, LLC

PLM Bulk Asbestos Report

86234.01; 350 Oak View CT - Common Area

Client No. / HGA	Lab No.	Asbestos Present	Total % Asbestos
STA-1 Location: Brown Stair Tread w/Yellow Mastic; Hallway	115061854-13.2	No	NAD (by CVES) by Jean L. Mayes on 06/23/15
Analyst Description: Yellow, Heterogeneous, Non-Fibrous, Mastic Asbestos Types: Other Material: Non-fibrous 100 %			
STA-2 Location: Brown Stair Tread w/Yellow Mastic; Hallway	115061854-14.1	No	NAD (by CVES) by Jean L. Mayes on 06/23/15
Analyst Description: Brown, Heterogeneous, Non-Fibrous, Stair Tread Asbestos Types: Other Material: Non-fibrous 100 %			
STA-2 Location: Brown Stair Tread w/Yellow Mastic; Hallway	115061854-14.2	No	NAD (by CVES) by Jean L. Mayes on 06/23/15
Analyst Description: Yellow, Heterogeneous, Non-Fibrous, Mastic Asbestos Types: Other Material: Non-fibrous 100 %			

Reporting Notes:

Analyzed by: Jean L. Mayes



Date

6/23/15

*NAD = no asbestos detected, Detection Limit <1%, Reporting Limits: CVES = 1%, 400 Pt Ct = 0.25%, 1000 Pt Ct = 0.1%; "Present" or NVA = "No Visible Asbestos" are observations made during a qualitative analysis; NA = not analyzed; NA/PS = not analyzed / positive stop; PLM Bulk Asbestos Analysis by EPA 600/R-93/116 per 40 CFR 763 (NVLAP Lab Code 101904-0) and ELAP PLM Analysis Protocol 198.1 for New York friable samples which includes quantitation of any vermiculite observed (198.6 for NOB samples) or EPA 400 pt ct by EPA 600/M4-82-020 (NYSDOH ELAP Lab # 10984); CA ELAP Lab # 2508; Note: PLM is not consistently reliable in detecting asbestos in floor coverings and similar NOB materials. NAD or Trace results by PLM are inconclusive, TEM is currently the only method that can be used to determine if this material can be considered or treated as non-asbestos-containing in New York State (also see EPA Advisory for floor tile, FR 59, 146, 38970, 8/1/94). NIST Accreditation requirements mandate that this report must not be reproduced except in full without the approval of the laboratory. This PLM report relates ONLY to the items tested.

Reviewed By: _____

Watterson Environmental and Facilities Management

5580 Monroe St., Suite 103, Sylvania, Ohio 43560
 Phone - (419) 824-5210 Fax - (419) 824-5220

115061854

Asbestos Bulk Sample Log

PLM

Date of Survey: 6/1/15 Lab. Analysis: _____
 Project No.: 8623401 Turnaround Time: _____
 Project: 350 Oak View Ct - Conversion Area Page 1 Of 1
 Contact Person: Dave Dubatz

Sample Number	HSA Number	Material	Functional Area	Sample Location
BCA-1	BCA	Brown base coat w/	Laundry Room	Laundry room east wall
BCA-2	BCA	Yellow mastic	↓	Laundry Room west wall
CTA-1	CTA	White ceiling texture	Hallway 1st and 2nd	1st Floor beneath Stairs
CTA-2	CTA	↓	↓	2nd Floor top of Stairs
DWA-1	DWA	White Drywall w/	Boiler Room	SE corner wall
DWA-2	DWA	joint compound	↓	Central - ceiling
DWB-1	DWB	white drywall w/	Hallway and laundry	SE corner of laundry room
DWB-2	DWB	joint compound	↓	1st Floor Hallway beneath Stairs
FTA-1	FTA	12X12 Beige FT w/	1st Floor Hallway	Southeast corner of hallway near boiler room
FTA-2	FTA	black mastic	↓	Near entrance door
FTB-1	FTB	12X12 Beige FT w/	2nd Floor Hallway	North wall in Laundry
FTB-2	FTB	Yellow mastic	Laundry Room	Northwest corner of Hallway
STA-1	STA	Brown Stair tread	↓	Stairs
STA-2	STA	w/ yellow mastic	↓	Stairs

RECEIVED
 JUN 17 2015
 BY: PL

Relinquished By: ZCARY Received By: _____
 Date: 6/15/15 Date: _____
 Relinquished By: _____ Received By: _____
 Date: _____ Date: _____

Comments: _____



Please Reply To:

AmeriSci Richmond

13635 GENITO ROAD
MIDLOTHIAN, VIRGINIA 23112
TEL: (804) 763-1200 • FAX: (804) 763-1800

FACSIMILE TELECOPY TRANSMISSION

To: Dave Dukat
Watterson Environmental Group, LLC
Fax #:
Email: ddukat@wattersonefm.com

From: Jean L. Mayes
AmeriSci Job #: 115061855
Subject: PLM 5 day Results
Client Project: 86234.01; 342 Oak View CT,
Office

Date: Tuesday, June 23, 2015
Time: 14:18:34

Number of Pages: 8
(including cover sheet)

Comments:

CONFIDENTIALITY NOTICE: Unless otherwise indicated, the information contained in this communication is confidential information intended for use of the individual named above. If the reader of this communication is not the intended recipient, you are hereby notified that any dissemination, distribution or copying of this communication is prohibited. If you have received this communication in error, please immediately notify the sender by telephone and return the original message to the above address via the US Postal Service at our expense. Preliminary data reported here will be verified before final report is issued. Samples are disposed of in 60 days or unless otherwise instructed by the protocol or special instructions in writing. Thank you.

Certified Analysis Service 24 Hours A Day • 7 Days A Week Competitive Prices
visit our web site - www.amerisci.com

Boston • Los Angeles • New York • Richmond



AmeriSci Richmond

13635 GENITO ROAD
MIDLOTHIAN, VIRGINIA 23112
TEL: (804) 763-1200 • FAX: (804) 763-1800

PLM Bulk Asbestos Report

Watterson Environmental Group, LLC
Attn: Dave Dukat
5800 Monroe Street, Bldg A-2

Sylvania, OH 43560

Date Received 06/17/15 **AmeriSci Job #** 115061855
Date Examined 06/23/15 **P.O. #**
Page 1 **of** 5
RE: 86234.01; 342 Oak View CT, Office

Client No. / HGA	Lab No.	Asbestos Present	Total % Asbestos
WCA-1 Location: White Window Caulk; Entrance, Offices	115061855-01	No	NAD (by CVES) by Jean L. Mayes on 06/23/15
Analyst Description: White, Heterogeneous, Non-Fibrous, Bulk Material Asbestos Types: Other Material: Non-fibrous 100 %			
WCA-2 Location: White Window Caulk; Entrance, Offices	115061855-02	No	NAD (by CVES) by Jean L. Mayes on 06/23/15
Analyst Description: White, Heterogeneous, Non-Fibrous, Bulk Material Asbestos Types: Other Material: Non-fibrous 100 %			
WCB-1 Location: White Window Caulk; Exterior	115061855-03	No	NAD (by CVES) by Jean L. Mayes on 06/23/15
Analyst Description: White, Heterogeneous, Non-Fibrous, Bulk Material Asbestos Types: Other Material: Non-fibrous 100 %			
WCB-2 Location: White Window Caulk; Exterior	115061855-04	No	NAD (by CVES) by Jean L. Mayes on 06/23/15
Analyst Description: White, Heterogeneous, Non-Fibrous, Bulk Material Asbestos Types: Other Material: Non-fibrous 100 %			
WCC-1 Location: Gray Door Caulk; Exterior	115061855-05	No	NAD (by CVES) by Jean L. Mayes on 06/23/15
Analyst Description: White, Heterogeneous, Non-Fibrous, Bulk Material Asbestos Types: Other Material: Non-fibrous 100 %			

Client Name: Watterson Environmental Group, LLC

PLM Bulk Asbestos Report

86234.01; 342 Oak View CT, Office

Client No. / HGA	Lab No.	Asbestos Present	Total % Asbestos
CBA-1 Location: Brown Base Cove w/Yellow Mastic; Entrance	115061855-06.1	No	NAD (by CVES) by Jean L. Mayes on 06/23/15
Analyst Description: Brown, Heterogeneous, Non-Fibrous, Base Cove Asbestos Types: Other Material: Non-fibrous 100 %			
CBA-1 Location: Brown Base Cove w/Yellow Mastic; Entrance	115061855-06.2	No	NAD (by CVES) by Jean L. Mayes on 06/23/15
Analyst Description: Yellow, Heterogeneous, Non-Fibrous, Mastic Asbestos Types: Other Material: Non-fibrous 100 %			
CBA-2 Location: Brown Base Cove w/Yellow Mastic; Entrance	115061855-07.1	No	NAD (by CVES) by Jean L. Mayes on 06/23/15
Analyst Description: Brown, Heterogeneous, Non-Fibrous, Base Cove Asbestos Types: Other Material: Non-fibrous 100 %			
CBA-2 Location: Brown Base Cove w/Yellow Mastic; Entrance	115061855-07.2	No	NAD (by CVES) by Jean L. Mayes on 06/23/15
Analyst Description: Yellow, Heterogeneous, Non-Fibrous, Mastic Asbestos Types: Other Material: Non-fibrous 100 %			
CBB-1 Location: Gray Base Cove w/Yellow Mastic; Restroom, Hallway, Offices, Furnace	115061855-08.1	No	NAD (by CVES) by Jean L. Mayes on 06/23/15
Analyst Description: Gray, Heterogeneous, Non-Fibrous, Base Cove Asbestos Types: Other Material: Non-fibrous 100 %			
CBB-1 Location: Gray Base Cove w/Yellow Mastic; Restroom, Hallway, Offices, Furnace	115061855-08.2	No	NAD (by CVES) by Jean L. Mayes on 06/23/15
Analyst Description: Yellow, Heterogeneous, Non-Fibrous, Mastic Asbestos Types: Other Material: Non-fibrous 100 %			

PLM Bulk Asbestos Report

86234.01; 342 Oak View CT, Office

Client No. / HGA	Lab No.	Asbestos Present	Total % Asbestos
CBB-2 Location: Gray Base Cove w/Yellow Mastic; Restroom, Hallway, Offices, Furnace	115061855-09.1	No	NAD (by CVES) by Jean L. Mayes on 06/23/15
Analyst Description: Gray, Heterogeneous, Non-Fibrous, Base Cove			
Asbestos Types:			
Other Material: Non-fibrous 100 %			
CBB-2 Location: Gray Base Cove w/Yellow Mastic; Restroom, Hallway, Offices, Furnace	115061855-09.2	No	NAD (by CVES) by Jean L. Mayes on 06/23/15
Analyst Description: Yellow, Heterogeneous, Non-Fibrous, Mastic			
Asbestos Types:			
Other Material: Non-fibrous 100 %			
DWA-1 Location: Drywall w/Joint Compound; Entire Building	115061855-10.1	No	NAD (by CVES) by Jean L. Mayes on 06/23/15
Analyst Description: White/Brown, Heterogeneous, Non-Fibrous, Drywall			
Asbestos Types:			
Other Material: Cellulose 10 %, Non-fibrous 90 %			
DWA-1 Location: Drywall w/Joint Compound; Entire Building	115061855-10.2	No	NAD (by CVES) by Jean L. Mayes on 06/23/15
Analyst Description: White, Heterogeneous, Non-Fibrous, Joint Compound			
Asbestos Types:			
Other Material: Non-fibrous 100 %			
DWA-2 Location: Drywall w/Joint Compound; Entire Building	115061855-11.1	No	NAD (by CVES) by Jean L. Mayes on 06/23/15
Analyst Description: Brown/White, Heterogeneous, Non-Fibrous, Drywall			
Asbestos Types:			
Other Material: Cellulose 40 %, Non-fibrous 60 %			
DWA-2 Location: Drywall w/Joint Compound; Entire Building	115061855-11.2	No	NAD (by CVES) by Jean L. Mayes on 06/23/15
Analyst Description: White, Heterogeneous, Non-Fibrous, Joint Compound			
Asbestos Types:			
Other Material: Non-fibrous 100 %			

Client Name: Watterson Environmental Group, LLC

PLM Bulk Asbestos Report

86234.01; 342 Oak View CT, Office

Client No. / HGA	Lab No.	Asbestos Present	Total % Asbestos
CTA-1 Location: Ceiling Texture; Entire Building	115061855-12	No	NAD (by CVES) by Jean L. Mayes on 06/23/15
Analyst Description: White, Heterogeneous, Non-Fibrous, Bulk Material			
Asbestos Types:			
Other Material: Non-fibrous 100 %			
CTA-2 Location: Ceiling Texture; Entire Building	115061855-13	No	NAD (by CVES) by Jean L. Mayes on 06/23/15
Analyst Description: White, Heterogeneous, Non-Fibrous, Bulk Material			
Asbestos Types:			
Other Material: Non-fibrous 100 %			
FTA-1 Location: 12x12 Gray FT w/Black Mastic; Closet, Entrance, Hallway Restroom	115061855-14.1	No	NAD (by CVES) by Jean L. Mayes on 06/23/15
Analyst Description: Gray, Heterogeneous, Non-Fibrous, Floor Tile			
Asbestos Types:			
Other Material: Non-fibrous 100 %			
FTA-1 Location: 12x12 Gray FT w/Black Mastic; Closet, Entrance, Hallway Restroom	115061855-14.2	Yes	4 % (by CVES) by Jean L. Mayes on 06/23/15
Analyst Description: Black, Heterogeneous, Non-Fibrous, Mastic			
Asbestos Types: Chrysotile 4.0 %			
Other Material: Non-fibrous 96 %			
FTA-2 Location: 12x12 Gray FT w/Black Mastic; Closet, Entrance, Hallway Restroom	115061855-15.1	No	NAD (by CVES) by Jean L. Mayes on 06/23/15
Analyst Description: Gray, Heterogeneous, Non-Fibrous, Floor Tile			
Asbestos Types:			
Other Material: Non-fibrous 100 %			
FTA-2 Location: 12x12 Gray FT w/Black Mastic; Closet, Entrance, Hallway Restroom	115061855-15.2	Yes	3 % (by CVES) by Jean L. Mayes on 06/23/15
Analyst Description: Black, Heterogeneous, Non-Fibrous, Mastic			
Asbestos Types: Chrysotile 3.0 %			
Other Material: Non-fibrous 97 %			

Client Name: Watterson Environmental Group, LLC

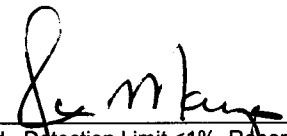
PLM Bulk Asbestos Report

86234.01; 342 Oak View CT, Office

Client No. / HGA	Lab No.	Asbestos Present	Total % Asbestos
FTA-3 Location: 12x12 Gray FT w/Black Mastic; Closet, Entrance, Hallway Restroom	115061855-16		NA
Analyst Description: Bulk Material Asbestos Types: Other Material: Comment: No Sample in Bag			
FTB-1 Location: 12x12 Gray FT w/Red Mastic; Furnace	115061855-17.1	No	NAD (by CVES) by Jean L. Mayes on 06/23/15
Analyst Description: Gray, Heterogeneous, Non-Fibrous, Floor Tile Asbestos Types: Other Material: Non-fibrous 100 %			
FTB-1 Location: 12x12 Gray FT w/Red Mastic; Furnace	115061855-17.2	No	NAD (by CVES) by Jean L. Mayes on 06/23/15
Analyst Description: Yellow, Heterogeneous, Non-Fibrous, Mastic Asbestos Types: Other Material: Cellulose 2 %, Non-fibrous 98 %			
FTB-2 Location: 12x12 Gray FT w/Red Mastic; Furnace	115061855-18	No	NAD (by CVES) by Jean L. Mayes on 06/23/15
Analyst Description: Gray, Heterogeneous, Non-Fibrous, Floor Tile Asbestos Types: Other Material: Non-fibrous 100 %			

Reporting Notes:

Analyzed by: Jean L. Mayes



Date

6/23/15

*NAD = no asbestos detected, Detection Limit <1%, Reporting Limits: CVES = 1%, 400 Pt Ct = 0.25%, 1000 Pt Ct = 0.1%; "Present" or NVA = "No Visible Asbestos" are observations made during a qualitative analysis; NA = not analyzed; NA/PS = not analyzed / positive stop; PLM Bulk Asbestos Analysis by EPA 600/R-93/116 per 40 CFR 763 (NVLAP Lab Code 101904-0) and ELAP PLM Analysis Protocol 198.1 for New York friable samples which includes quantitation of any vermiculite observed (198.6 for NOB samples) or EPA 400 pt ct by EPA 600/M4-82-020 (NYSDOH ELAP Lab # 10984); CA ELAP Lab # 2508; Note: PLM is not consistently reliable in detecting asbestos in floor coverings and similar NOB materials. NAD or Trace results by PLM are inconclusive, TEM is currently the only method that can be used to determine if this material can be considered or treated as non-asbestos-containing in New York State (also see EPA Advisory for floor tile, FR 59, 146, 38970, 8/1/94). NIST Accreditation requirements mandate that this report must not be reproduced except in full without the approval of the laboratory. This PLM report relates ONLY to the items tested.

Reviewed By: _____

Watterson Environmental and Facilities Management

5580 Monroe St., Suite 103, Sylvania, Ohio 43560
 Phone - (419) 824-5210 Fax - (419) 824-5220

115061855

Asbestos Bulk Sample Log

Date of Survey: 5/29/15
 Project No.: 16234.01
 Project: 342 Oak View Ct, Office
 Contact Person: Dave Dukat

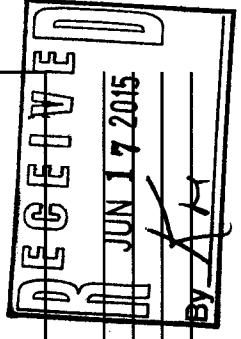
Lab. Analysis: PLM
 Turnaround Time: _____
 Page 1 of 2

Sample Number	HSA Number	Material	Functional Area	Sample Location
WCA-1	WCA	White window caulk	Entrance, Office S	Entrance South wall
WCA-2	WCA	↓	↓	Office #1 West wall
WCB-1	WCB	White window caulk	Exterior	South wall window
WCB-2	WCB	↓	↓	West wall northern window
WCC-1	WCC	Grey door caulk	Exterior	Door South side
CBA-1	CBA	Brown base caulk w/	Entrance	Closet in entrance
CBA-2	CBA	Yellow mastic	↓	West wall near closet in entrance
CBB-1	CBB	Grey base caulk w/	Restroom, Hallway,	Restroom east wall
CBB-2	CBB	Yellow mastic	offices, Furnace	Furnace north wall
DWA-1	DWA	Drywall w/ joint	Entire building	Closet j South wall
DWA-2	DWA	compound	↓	Furnace South wall
CTA-1	CTA	Ceiling Texture	Entire building	Restroom NW corner
CTA-2	CTA	↓	↓	Office #2 east side
FTA-1	FTA	12x12 Gray FT	Closet, Entrance, hallway	Closet
FTA-2	FTA	w/ black mastic	Restroom	Entrance closet

Relinquished By: [Signature]
 Date: 6/5/15

Received By: _____
 Date: _____
 Received By: _____
 Date: _____

Comments: _____



Waterson Environmental and Facilities Management

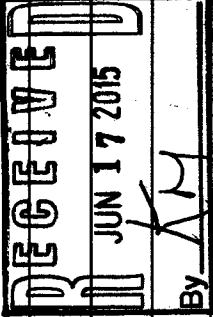
115061855

5580 Monroe St., Suite 103, Sylvania, Ohio 43560
Phone - (419) 824-5210 Fax - (419) 824-5220

Asbestos Bulk Sample Log

Date of Survey: 5/29/15 Lab. Analysis: PLM
Project No.: 86234.01 Turnaround Time: _____
Contact Person: Dave Dubat Page 2 Of 2

Sample Number	HSA Number	Material	Functional Area	Sample Location
FTB-1	FTB	VER Gray FT w/	Furnace	Furnace center
FTB-2	FTB	Red matrix	↓	Furnace SE corner



Relinquished By: _____ Received By: _____
Date: _____ Date: _____
Relinquished By: _____ Received By: _____
Date: _____ Date: _____

Comments: _____



Please Reply To:

AmeriSci Richmond

13635 GENITO ROAD
MIDLOTHIAN, VIRGINIA 23112
TEL: (804) 763-1200 • FAX: (804) 763-1800

FACSIMILE TELECOPY TRANSMISSION

To: Dave Dukat
Watterson Environmental Group, LLC
Fax #:
Email: ddukat@wattersonefm.com

From: William M. Dunstan
AmeriSci Job #: 115061851
Subject: PLM 5 day Results
Client Project: 86234.01; 353 Oak View CT -
Maintenance; (Report Amended
6/24/2015)

Date: Wednesday, June 24, 2015

Time: 18:43:07

Comments:

Number of Pages: 9
(including cover sheet)

CONFIDENTIALITY NOTICE: Unless otherwise indicated, the information contained in this communication is confidential information intended for use of the individual named above. If the reader of this communication is not the intended recipient, you are hereby notified that any dissemination, distribution or copying of this communication is prohibited. If you have received this communication in error, please immediately notify the sender by telephone and return the original message to the above address via the US Postal Service at our expense. Preliminary data reported here will be verified before final report is issued. Samples are disposed of in 60 days or unless otherwise instructed by the protocol or special instructions in writing. Thank you.

Certified Analysis *Service 24 Hours A Day • 7 Days A Week* *Competitive Prices*
visit our web site - www.amerisci.com

Boston • Los Angeles • New York • Richmond



AmeriSci Richmond

13635 GENITO ROAD
MIDLOTHIAN, VIRGINIA 23112
TEL: (804) 763-1200 • FAX: (804) 763-1800

PLM Bulk Asbestos Report

Watterson Environmental Group, LLC
Attn: Dave Dukat
5800 Monroe Street, Bldg A-2
Sylvania, OH 43560

Date Received 06/17/15
Date Examined 06/23/15

AmeriSci Job # 115061851
P.O. #
Page 1 **of** 5

RE: 86234.01; 353 Oak View CT - Maintenance; (Report Amended 6/24/2015)

Client No. / HGA	Lab No.	Asbestos Present	Total % Asbestos
BCA-1 Location: Brown Base Cove w/Yellow Mastic; Restroom, Breakroom Analyst Description: Dark Brown, Heterogeneous, Non-Fibrous, Base Cove Asbestos Types: Other Material: Non-fibrous 100 %	115061851-01.1	No	NAD (by CVES) by William M. Dunstan on 06/23/15
BCA-1 Location: Brown Base Cove w/Yellow Mastic; Restroom, Breakroom Analyst Description: Yellow, Heterogeneous, Non-Fibrous, Mastic Asbestos Types: Other Material: Non-fibrous 100 %	115061851-01.2	No	NAD (by CVES) by William M. Dunstan on 06/23/15
BCA-2 Location: Brown Base Cove w/Yellow Mastic; Restroom, Breakroom Analyst Description: Dark Brown, Heterogeneous, Non-Fibrous, Base Cove Asbestos Types: Other Material: Non-fibrous 100 %	115061851-02.1	No	NAD (by CVES) by William M. Dunstan on 06/23/15
BCA-2 Location: Brown Base Cove w/Yellow Mastic; Restroom, Breakroom Analyst Description: Yellow, Heterogeneous, Non-Fibrous, Mastic Asbestos Types: Other Material: Non-fibrous 100 %	115061851-02.2	No	NAD (by CVES) by William M. Dunstan on 06/23/15
BCB-1 Location: Gray Base Cove w/Yellow Mastic; Storage #2 #3 Analyst Description: Gray, Heterogeneous, Non-Fibrous, Base Cove Asbestos Types: Other Material: Non-fibrous 100 %	115061851-03.1	No	NAD (by CVES) by William M. Dunstan on 06/23/15

PLM Bulk Asbestos Report

86234.01; 353 Oak View CT - Maintenance; (Report Amended
6/24/2015)

Client No. / HGA	Lab No.	Asbestos Present	Total % Asbestos
BCB-1	115061851-03.2	No	NAD
Location: Gray Base Cove w/Yellow Mastic; Storage #2 #3			(by CVES) by William M. Dunstan on 06/23/15
Analyst Description: Yellow, Heterogeneous, Non-Fibrous, Mastic Asbestos Types: Other Material: Non-fibrous 100 %			
BCB-2	115061851-04.1	No	NAD
Location: Gray Base Cove w/Yellow Mastic; Storage #2 #3			(by CVES) by William M. Dunstan on 06/23/15
Analyst Description: Gray, Heterogeneous, Non-Fibrous, Base Cove Asbestos Types: Other Material: Non-fibrous 100 %			
BCB-2	115061851-04.2	No	NAD
Location: Gray Base Cove w/Yellow Mastic; Storage #2 #3			(by CVES) by William M. Dunstan on 06/23/15
Analyst Description: Yellow, Heterogeneous, Non-Fibrous, Mastic Asbestos Types: Other Material: Non-fibrous 100 %			
DWA-1	115061851-05.1	No	NAD
Location: Drywall w/Joint Compound; Entire Building			(by CVES) by William M. Dunstan on 06/23/15
Analyst Description: White/Tan, Heterogeneous, Non-Fibrous, Drywall Asbestos Types: Other Material: Cellulose 5 %, Non-fibrous 95 %			
DWA-1	115061851-05.2	Yes	0.8 % pc
Location: Drywall w/Joint Compound; Entire Building			(by 400 pt ct) by William M. Dunstan on 06/24/15
Analyst Description: White, Heterogeneous, Non-Fibrous, Joint Compound Asbestos Types: Chrysotile 0.8 % Other Material: Non-fibrous 99.3 %			
DWA-2	115061851-06.1	No	NAD
Location: Drywall w/Joint Compound; Entire Building			(by CVES) by William M. Dunstan on 06/23/15
Analyst Description: White/Tan, Heterogeneous, Non-Fibrous, Drywall Asbestos Types: Other Material: Cellulose 5 %, Non-fibrous 95 %			

Client Name: Watterson Environmental Group, LLC

PLM Bulk Asbestos Report86234.01; 353 Oak View CT - Maintenance; (Report Amended
6/24/2015)

Client No. / HGA	Lab No.	Asbestos Present	Total % Asbestos
DWA-2	115061851-06.2	Yes	0.5 % pc (by 400 pt ct) by William M. Dunstan on 06/24/15
Location: Drywall w/Joint Compound; Entire Building			
Analyst Description: White, Heterogeneous, Non-Fibrous, Joint Compound			
Asbestos Types: Chrysotile 0.5 %			
Other Material: Non-fibrous 99.5 %			
FTA-1	115061851-07.1	No	NAD (by CVES) by William M. Dunstan on 06/23/15
Location: 12x12 Beige FT w/Black Mastic On Level Compound; Entire Building			
Analyst Description: Beige, Heterogeneous, Non-Fibrous, Floor Tile			
Asbestos Types:			
Other Material: Non-fibrous 100 %			
FTA-1	115061851-07.2	Yes	8 % (by CVES) by William M. Dunstan on 06/23/15
Location: 12x12 Beige FT w/Black Mastic On Level Compound; Entire Building			
Analyst Description: Black, Heterogeneous, Non-Fibrous, Mastic			
Asbestos Types: Chrysotile 8.0 %			
Other Material: Non-fibrous 92 %			
FTA-2	115061851-08.1	No	NAD (by CVES) by William M. Dunstan on 06/23/15
Location: 12x12 Beige FT w/Black Mastic On Level Compound; Entire Building			
Analyst Description: Beige, Heterogeneous, Non-Fibrous, Floor Tile			
Asbestos Types:			
Other Material: Non-fibrous 100 %			
FTA-2	115061851-08.2	Yes	8 % (by CVES) by William M. Dunstan on 06/23/15
Location: 12x12 Beige FT w/Black Mastic On Level Compound; Entire Building			
Analyst Description: Black, Heterogeneous, Non-Fibrous, Mastic			
Asbestos Types: Chrysotile 8.0 %			
Other Material: Non-fibrous 92 %			
FTA-3	115061851-09.1	No	NAD (by CVES) by William M. Dunstan on 06/23/15
Location: 12x12 Beige FT w/Black Mastic On Level Compound; Entire Building			
Analyst Description: Beige, Heterogeneous, Non-Fibrous, Floor Tile			
Asbestos Types:			
Other Material: Non-fibrous 100 %			

PLM Bulk Asbestos Report

86234.01; 353 Oak View CT - Maintenance; (Report Amended 6/24/2015)

Client No. / HGA	Lab No.	Asbestos Present	Total % Asbestos
FTA-3	115061851-09.2	Yes	8 %
Location: 12x12 Beige FT w/Black Mastic On Level Compound; Entire Building			(by CVES) by William M. Dunstan on 06/23/15
Analyst Description: Black, Heterogeneous, Non-Fibrous, Mastic Asbestos Types: Chrysotile 8.0 % Other Material: Non-fibrous 92 %			
CTA-1	115061851-10	Yes	3 %
Location: Ceiling Texture White; Entire Building			(by CVES) by William M. Dunstan on 06/23/15
Analyst Description: White, Heterogeneous, Non-Fibrous, Bulk Material Asbestos Types: Chrysotile 3.0 % Other Material: Non-fibrous 97 %			
CTA-2	115061851-11	Yes	3 %
Location: Ceiling Texture White; Entire Building			(by CVES) by William M. Dunstan on 06/23/15
Analyst Description: White, Heterogeneous, Non-Fibrous, Bulk Material Asbestos Types: Chrysotile 3.0 % Other Material: Non-fibrous 97 %			
CTA-3	115061851-12	Yes	3 %
Location: Ceiling Texture White; Entire Building			(by CVES) by William M. Dunstan on 06/23/15
Analyst Description: White, Heterogeneous, Non-Fibrous, Bulk Material Asbestos Types: Chrysotile 3.0 % Other Material: Non-fibrous 97 %			
WCA-1	115061851-13	No	NAD
Location: White Compound; Exterior			(by CVES) by William M. Dunstan on 06/23/15
Analyst Description: Gray, Heterogeneous, Non-Fibrous, Cementitious, Bulk Material Asbestos Types: Other Material: Non-fibrous 100 %			
WCA-2	115061851-14	No	NAD
Location: White Compound; Exterior			(by CVES) by William M. Dunstan on 06/23/15
Analyst Description: Gray, Heterogeneous, Non-Fibrous, Cementitious, Bulk Material Asbestos Types: Other Material: Non-fibrous 100 %			

PLM Bulk Asbestos Report

86234.01; 353 Oak View CT - Maintenance; (Report Amended 6/24/2015)

Client No. / HGA	Lab No.	Asbestos Present	Total % Asbestos
WCB-1 Location: Gray Caulk; Exterior	115061851-15	No	NAD (by CVES) by William M. Dunstan on 06/23/15
Analyst Description: Gray, Heterogeneous, Non-Fibrous, Bulk Material			
Asbestos Types:			
Other Material: Non-fibrous 100 %			
WCB-2 Location: Gray Caulk; Exterior	115061851-16	No	NAD (by CVES) by William M. Dunstan on 06/23/15
Analyst Description: Gray, Heterogeneous, Non-Fibrous, Bulk Material			
Asbestos Types:			
Other Material: Non-fibrous 100 %			

Reporting Notes:

Analyzed by: William M. Dunstan William M. Dunstan Date 6/24/15

*NAD = no asbestos detected, Detection Limit <1%, Reporting Limits: CVES = 1%, 400 Pt Ct = 0.25%, 1000 Pt Ct = 0.1%; "Present" or NVA = "No Visible Asbestos" are observations made during a qualitative analysis; NA = not analyzed; NA/PS = not analyzed / positive stop; PLM Bulk Asbestos Analysis by EPA 600/R-93/116 per 40 CFR 763 (NVLAP Lab Code 101904-0) and ELAP PLM Analysis Protocol 198.1 for New York friable samples which includes quantitation of any vermiculite observed (198.6 for NOB samples) or EPA 400 pt ct by EPA 600/M4-82-020 (NYSDOH ELAP Lab # 10984); CA ELAP Lab # 2508; Note: PLM is not consistently reliable in detecting asbestos in floor coverings and similar NOB materials. NAD or Trace results by PLM are inconclusive, TEM is currently the only method that can be used to determine if this material can be considered or treated as non-asbestos-containing in New York State (also see EPA Advisory for floor tile, FR 59, 146, 38970, 8/1/94). NIST Accreditation requirements mandate that this report must not be reproduced except in full without the approval of the laboratory. This PLM report relates ONLY to the items tested.

Reviewed By: _____

Waterson Environmental and Facilities Management

5580 Monroe St., Suite 103, Sylvania, Ohio 43560
 Phone - (419) 824-5210 Fax - (419) 824-5220

115061851

Asbestos Bulk Sample Log

Date of Survey: 5/29/15
 Project No.: 8023401
 Project: 353 Oate View Ct - Maintenance
 Contact Person: Dave Dukat

Lab. Analysis: PLM
 Turnaround Time: _____
 Page 1 of 2

Sample Number	HSA Number	Material	Functional Area	Sample Location
BCA-1	BCA	Brown base core w/	Restroom, break room	Restroom near door
BCA-2	BCA	Yellow mesh	↓	Breakroom beneath sink
BCB-1	BCB	Gray base core w/	Storage # 2 # 3	North wall in Storage # 3
BCB-2	BCB	Yellow mesh	↓	Storage # 2 near door
DWA-1	DWA	Drywall w/ joint compound	Entire building	Restroom near door
DWA-2	DWA	↓	↓	Shop near door west side
ETA-1	ETA	12x12 beige FT w/ black	Entire building	Northeastern corner in Storage # 1
ETA-2	ETA	mesh on backboard	↓	Southern portion in Storage # 3
ETA-3	ETA	↓	↓	West side in Shop
CTA-1	CTA	Ceiling texture ashtr	Entire building	Hallway near restroom
CTA-2	CTA	↓	↓	Storage # 2
CTA-3	CTA	↓	↓	Shop central portion
WCA-1	WCA	White compound	Exterior	Western wall
WCA-2	WCA	↓	↓	Southern wall near West wall

Relinquished By: [Signature]
 Date: 6/17/15

Received By: _____
 Date: _____

Comments: **RECEIVED**
 JUN 17 2015
 By: [Signature]

Watterson Environmental and Facilities Management

5580 Monroe St., Suite 103, Sylvania, Ohio 43560
Phone - (419) 824-5210 Fax - (419) 824-5220

115061851

Asbestos Bulk Sample Log

Date of Survey: 5/29/15
Project No.: Site 234.e1
Project: 353 Oak View Ct - Maintenance
Contact Person: Dave Duckert

Lab. Analysis: _____
Turnaround Time: _____
Page 2 of 2

Sample Number	HSA Number	Material	Functional Area	Sample Location
WLB-1	WLB	Gray walls	Exterior	North Side West Overhead doors
WLB-2	WLB	↓	↓	South Side Mill Entry doors

Relinquished By: _____
Date: _____

Received By: _____
Date: _____

Comments: _____

RECEIVED JUN 17 2015 BY <u>K-1</u>

Subject: RE: 353 Oak View Ct
From: Dave Dukat <ddukat@wattersonefm.com>
Date: 6/24/2015 9:25 AM
To: B Dunstan <bdunstan@amerisci.com>

I would like to get samples DWA-1 (11506151-05.2) and DWA-2 (115061851-06.2) point counted. No rush, 3 to 5 days. Thanks.

David A. Dukat, PG
Vice President, Environmental
5580 Monroe Street, Suite 103
Sylvania, Ohio 43560
Cell: (419) 704-4956
Office: (419) 824-5210
Fax: (419) 824-5220
www.wattersonefm.com<<http://www.wattersonefm.com>>

[Watterson-Email-Logo-Yellow-line-stroke]

This communication, including attachments, is for the exclusive use of addressee and may contain proprietary, confidential and/or privileged information. If you are not the intended recipient, any use, copying, disclosure, dissemination or distribution is strictly prohibited. If you are not the intended recipient, please notify the sender immediately by return e-mail, delete this communication and destroy all copies.

P Please consider the environment before printing my e-mail

From: B Dunstan [<mailto:bdunstan@amerisci.com>]
Sent: Tuesday, June 23, 2015 5:49 PM
To: Dave Dukat
Subject: 353 Oak View Ct

Asbestos results.

[\[http://static.avast.com/emails/avast-mail-stamp.png\]](http://static.avast.com/emails/avast-mail-stamp.png) <<https://www.avast.com/antivirus>>

This email is free from viruses and malware because avast!
Antivirus<<https://www.avast.com/antivirus>> protection is active.

No virus found in this message.
Checked by AVG - www.avg.com<<http://www.avg.com>>
Version: 2015.0.6030 / Virus Database: 4365/10065 - Release Date: 06/21/15

Attachments:

image001.png

17179869184
GB



Please Reply To:

AmeriSci Richmond

13635 GENITO ROAD
MIDLOTHIAN, VIRGINIA 23112
TEL: (804) 763-1200 • FAX: (804) 763-1800

FACSIMILE TELECOPY TRANSMISSION

To: Dave Dukat
Watterson Environmental Group, LLC
Fax #:
Email: ddukat@wattersonefm.com

From: David W. Rabovsky
AmeriSci Job #: 115061848
Subject: PLM 5 day Results
Client Project: 86234.01; 9842 Oak Place CT -
Common

Date: Wednesday, June 24, 2015
Time: 11:34:55
Comments:

Number of Pages: 8
(including cover sheet)

CONFIDENTIALITY NOTICE: Unless otherwise indicated, the information contained in this communication is confidential information intended for use of the individual named above. If the reader of this communication is not the intended recipient, you are hereby notified that any dissemination, distribution or copying of this communication is prohibited. If you have received this communication in error, please immediately notify the sender by telephone and return the original message to the above address via the US Postal Service at our expense. Preliminary data reported here will be verified before final report is issued. Samples are disposed of in 60 days or unless otherwise instructed by the protocol or special instructions in writing. Thank you.

Certified Analysis Service 24 Hours A Day • 7 Days A Week Competitive Prices
visit our web site - www.amerisci.com

Boston • Los Angeles • New York • Richmond



AmeriSci Richmond

13635 GENITO ROAD
MIDLOTHIAN, VIRGINIA 23112
TEL: (804) 763-1200 • FAX: (804) 763-1800

PLM Bulk Asbestos Report

Watterson Environmental Group, LLC
Attn: Dave Dukat
5800 Monroe Street, Bldg A-2
Sylvania, OH 43560

Date Received 06/17/15 **AmeriSci Job #** 115061848
Date Examined 06/24/15 **P.O. #**
Page 1 **of** 6
RE: 86234.01; 9842 Oak Place CT - Common

Client No. / HGA	Lab No.	Asbestos Present	Total % Asbestos
FTA-1 Location: 12x12 Beige FT w/Black Mastic; 1st Floor Hallway	115061848-01	No	NAD (by CVES) by David W. Ralbovsky on 06/24/15
Analyst Description: Beige, Heterogeneous, Non-Fibrous, Floor Tile Asbestos Types: Other Material: Non-fibrous 100 % Comment: Insufficient mastic for analysis.			
FTA-2 Location: 12x12 Beige FT w/Black Mastic; 1st Floor Hallway	115061848-02.1	No	NAD (by CVES) by David W. Ralbovsky on 06/24/15
Analyst Description: Beige, Heterogeneous, Non-Fibrous, Floor Tile Asbestos Types: Other Material: Non-fibrous 100 %			
FTA-2 Location: 12x12 Beige FT w/Black Mastic; 1st Floor Hallway	115061848-02.2	Yes	10 % (by CVES) by David W. Ralbovsky on 06/24/15
Analyst Description: Black, Heterogeneous, Non-Fibrous, Mastic Asbestos Types: Chrysotile 10.0 % Other Material: Non-fibrous 90 %			
FTB-1 Location: 12x12 Beige FT w/Black Mastic; 2nd Floor Hallway and Laundry Room	115061848-03	No	NAD (by CVES) by David W. Ralbovsky on 06/24/15
Analyst Description: Beige, Heterogeneous, Non-Fibrous, Floor Tile Asbestos Types: Other Material: Non-fibrous 100 % Comment: Insufficient mastic for analysis.			

Client Name: Watterson Environmental Group, LLC

PLM Bulk Asbestos Report

86234.01; 9842 Oak Place CT - Common

Client No. / HGA	Lab No.	Asbestos Present	Total % Asbestos
FTB-2	115061848-04	No	NAD
Location: 12x12 Beige FT w/Black Mastic; 2nd Floor Hallway and Laundry Room			(by CVES) by David W. Ralbovsky on 06/24/15
Analyst Description: Beige, Heterogeneous, Non-Fibrous, Floor Tile			
Asbestos Types:			
Other Material: Non-fibrous 100 %			
Comment: Insufficient mastic for analysis.			
BCA-1	115061848-05.1	No	NAD
Location: Black Base Cove w/White Mastic; 1st Floor Hallway			(by CVES) by David W. Ralbovsky on 06/24/15
Analyst Description: Black, Heterogeneous, Non-Fibrous, Base Cove			
Asbestos Types:			
Other Material: Non-fibrous 100 %			
BCA-1	115061848-05.2	No	NAD
Location: Black Base Cove w/White Mastic; 1st Floor Hallway			(by CVES) by David W. Ralbovsky on 06/24/15
Analyst Description: White, Heterogeneous, Non-Fibrous, Mastic			
Asbestos Types:			
Other Material: Non-fibrous 100 %			
BCA-2	115061848-06.1	No	NAD
Location: Black Base Cove w/White Mastic; 1st Floor Hallway			(by CVES) by David W. Ralbovsky on 06/24/15
Analyst Description: Black, Heterogeneous, Non-Fibrous, Base Cove			
Asbestos Types:			
Other Material: Non-fibrous 100 %			
BCA-2	115061848-06.2	No	NAD
Location: Black Base Cove w/White Mastic; 1st Floor Hallway			(by CVES) by David W. Ralbovsky on 06/24/15
Analyst Description: White/Clear, Heterogeneous, Non-Fibrous, Mastic			
Asbestos Types:			
Other Material: Cellulose Trace, Non-fibrous 100 %			

PLM Bulk Asbestos Report

86234.01; 9842 Oak Place CT - Common

Client No. / HGA	Lab No.	Asbestos Present	Total % Asbestos
DWA-1 Location: Drywall w/Joint Compound; 1st Floor and 2nd Floor Analyst Description: Brown/Lt. Gray, Heterogeneous, Fibrous, Drywall Asbestos Types: Other Material: Cellulose 5 %, Non-fibrous 95 %	115061848-07.1	No	NAD (by CVES) by David W. Ralbovsky on 06/24/15
DWA-1 Location: Drywall w/Joint Compound; 1st Floor and 2nd Floor Analyst Description: White, Heterogeneous, Non-Fibrous, Joint Compound Asbestos Types: Other Material: Non-fibrous 100 %	115061848-07.2	No	NAD (by CVES) by David W. Ralbovsky on 06/24/15
DWA-1 Location: Drywall w/Joint Compound; 1st Floor and 2nd Floor Analyst Description: Off White, Heterogeneous, Fibrous, Tape Asbestos Types: Other Material: Fibrous glass 95 %, Non-fibrous 5 %	115061848-07.3	No	NAD (by CVES) by David W. Ralbovsky on 06/24/15
DWA-2 Location: Drywall w/Joint Compound; 1st Floor and 2nd Floor Analyst Description: Brown/Off-White, Heterogeneous, Non-Fibrous, Drywall Asbestos Types: Other Material: Cellulose 5 %, Fibrous glass Trace, Non-fibrous 95 %	115061848-08.1	No	NAD (by CVES) by David W. Ralbovsky on 06/24/15
DWA-2 Location: Drywall w/Joint Compound; 1st Floor and 2nd Floor Analyst Description: White, Heterogeneous, Non-Fibrous, Joint Compound Asbestos Types: Other Material: Non-fibrous 100 %	115061848-08.2	No	NAD (by CVES) by David W. Ralbovsky on 06/24/15
DWB-1 Location: Drywall w/Joint Compound; Boiler Room Analyst Description: White, Heterogeneous, Fibrous, Drywall Asbestos Types: Other Material: Cellulose 5 %, Non-fibrous 95 %	115061848-09.1	No	NAD (by CVES) by David W. Ralbovsky on 06/24/15

Client Name: Watterson Environmental Group, LLC

PLM Bulk Asbestos Report

86234.01; 9842 Oak Place CT - Common

Client No. / HGA	Lab No.	Asbestos Present	Total % Asbestos
DWB-1	115061848-09.2	No	NAD
Location: Drywall w/Joint Compound; Boiler Room			(by CVES) by David W. Ralbovsky on 06/24/15
Analyst Description: White, Heterogeneous, Non-Fibrous, Joint Compound			
Asbestos Types:			
Other Material: Non-fibrous 100 %			
DWB-2	115061848-10	No	NAD
Location: Drywall w/Joint Compound; Boiler Room			(by CVES) by David W. Ralbovsky on 06/24/15
Analyst Description: White, Heterogeneous, Non-Fibrous, Joint Compound			
Asbestos Types:			
Other Material: Non-fibrous 100 %			
Comment: Insufficient drywall for analysis.			
DWB-3	115061848-11.1	No	NAD
Location: Drywall w/Joint Compound; Boiler Room			(by CVES) by David W. Ralbovsky on 06/24/15
Analyst Description: Brown/White, Heterogeneous, Fibrous, Drywall			
Asbestos Types:			
Other Material: Cellulose 5 %, Fibrous glass Trace, Non-fibrous 95 %			
Comment: Insufficient joint compound for analysis.			
DWB-3	115061848-11.2	No	NAD
Location: Drywall w/Joint Compound; Boiler Room			(by CVES) by David W. Ralbovsky on 06/24/15
Analyst Description: White, Heterogeneous, Non-Fibrous, Joint Compound			
Asbestos Types:			
Other Material: Non-fibrous 100 %			
STA-1	115061848-12.1	No	NAD
Location: Brown Stair Tread w/Yellow Mastic; 1st and 2nd Floors			(by CVES) by David W. Ralbovsky on 06/24/15
Analyst Description: Dark Brown, Heterogeneous, Non-Fibrous, Stair Tread			
Asbestos Types:			
Other Material: Non-fibrous 100 %			

PLM Bulk Asbestos Report

86234.01; 9842 Oak Place CT - Common

Client No. / HGA	Lab No.	Asbestos Present	Total % Asbestos
STA-1	115061848-12.2	No	NAD
<p>Location: Brown Stair Tread w/Yellow Mastic; 1st and 2nd Floors</p> <p>Analyst Description: Yellow/Brown, Heterogeneous, Non-Fibrous, Mastic</p> <p>Asbestos Types:</p> <p>Other Material: Cellulose 3 %, Non-fibrous 97 %</p>			<p>(by CVES) by David W. Ralbovsky on 06/24/15</p>
STA-2	115061848-13.1	No	NAD
<p>Location: Brown Stair Tread w/Yellow Mastic; 1st and 2nd Floors</p> <p>Analyst Description: Dark Brown, Heterogeneous, Non-Fibrous, Bulk Material</p> <p>Asbestos Types:</p> <p>Other Material: Non-fibrous 100 %</p>			<p>(by CVES) by David W. Ralbovsky on 06/24/15</p>
STA-2	115061848-13.2	No	NAD
<p>Location: Brown Stair Tread w/Yellow Mastic; 1st and 2nd Floors</p> <p>Analyst Description: Lt. Brown/White, Heterogeneous, Non-Fibrous, Mastic</p> <p>Asbestos Types:</p> <p>Other Material: Cellulose Trace, Non-fibrous 100 %</p>			<p>(by CVES) by David W. Ralbovsky on 06/24/15</p>
CTA-1	115061848-14	Yes	2 %
<p>Location: White Ceiling Texture; 1st, 2nd Floor Laundry Room</p> <p>Analyst Description: White, Heterogeneous, Non-Fibrous, Bulk Material</p> <p>Asbestos Types: Chrysotile 2.0 %</p> <p>Other Material: Non-fibrous 98 %</p>			<p>(by CVES) by David W. Ralbovsky on 06/24/15</p>
CTA-2	115061848-15	Yes	2 %
<p>Location: White Ceiling Texture; 1st, 2nd Floor Laundry Room</p> <p>Analyst Description: White, Heterogeneous, Non-Fibrous, Bulk Material</p> <p>Asbestos Types: Chrysotile 2.0 %</p> <p>Other Material: Non-fibrous 98 %</p>			<p>(by CVES) by David W. Ralbovsky on 06/24/15</p>

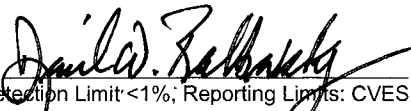
Client Name: Watterson Environmental Group, LLC

PLM Bulk Asbestos Report

86234.01; 9842 Oak Place CT - Common

Reporting Notes:

Analyzed by: David W. Ralbovsky



Date 9/24/15

*NAD = no asbestos detected, Detection Limit <1%; Reporting Limits: CVES = 1%, 400 Pt Ct = 0.25%, 1000 Pt Ct = 0.1%; "Present" or NVA = "No Visible Asbestos" are observations made during a qualitative analysis; NA = not analyzed; NA/PS = not analyzed / positive stop; PLM Bulk Asbestos Analysis by EPA 600/R-93/116 per 40 CFR 763 (NVLAP Lab Code 101904-0) and ELAP PLM Analysis Protocol 198.1 for New York friable samples which includes quantitation of any vermiculite observed (198.6 for NOB samples) or EPA 400 pt ct by EPA 600/M4-82-020 (NYSDOH ELAP Lab # 10984); CA ELAP Lab # 2508; Note: PLM is not consistently reliable in detecting asbestos in floor coverings and similar NOB materials. NAD or Trace results by PLM are inconclusive, TEM is currently the only method that can be used to determine if this material can be considered or treated as non-asbestos-containing in New York State (also see EPA Advisory for floor tile, FR 59, 146, 38970, 8/1/94). NIST Accreditation requirements mandate that this report must not be reproduced except in full without the approval of the laboratory. This PLM report relates ONLY to the items tested.

Reviewed By: _____

Watterson Environmental and Facilities Management

5580 Monroe St., Suite 103, Sylvania, Ohio 43560
 Phone - (419) 824-5210 Fax - (419) 824-5220

Asbestos Bulk Sample Log

Date of Survey: 5/25/15
 Project No.: 86234.01
 Project: Det. Place Ct. - Common
 Contact Person: Dave Dubat

115061848
 PLM

Lab. Analysis:

Turnaround Time:

Page 1 Of 1

Sample Number	HSA Number	Material	Functional Area	Sample Location
FTA-1	FTA	12x12 Beige FT w/	1st Floor Hallway	Near bikes Room
FTA-2	FTA	black mastic	↓	Beneath Steps
FTB-1	FTB	12x12 Beige FT w/	2nd Floor Hallway and	Hallway near steps
FTB-2	FTB	black mastic	Laundry Room	Laundry Room beneath counter
BCA-1	BCA	Black base coat of white	1st Floor Hallway	Along wall opposite of stairs
BCA-2	BCA	mastic	↓	Near base of stairs
DWA-1	DWA	Dry wall w/ joint compound	1st Floor w/ 2nd Floor	1st Floor beneath stairs
DWA-2	DWA	↓	↓	Laundry Room, back wall
DWB-1	DWB	Dry wall w/ joint compound	Bikes Room	Right wall near floor
DWB-2	DWB	↓	↓	Far wall, upper portion
DWB-3	DWB	↓	↓	Ceiling
STA-1	STA	Brown stair tread w/	1st and 2nd Floors	Stairs
STA-2	STA	Yellow mastic	↓	Stairs
CTA-1	CTA	White ceiling texture	1st Floor, 2nd Floor	1st Floor beneath stairs
CTA-2	CTA	↓	Laundry Room	2nd Floor near top of stairs

Relinquished By: [Signature]
 Date: 6/10/15
 Relinquished By: _____
 Date: _____

Received By: _____
 Date: _____
 Received By: _____
 Date: _____

Comments: _____

 DECEIVED
 JUN 17 2015
 By: [Signature]



Please Reply To:

AmeriSci Richmond

13635 GENITO ROAD
MIDLOTHIAN, VIRGINIA 23112
TEL: (804) 763-1200 • FAX: (804) 763-1800

FACSIMILE TELECOPY TRANSMISSION

To: Dave Dukat Watterson Environmental Group, LLC	From: Donna M. Blackwell
Fax #:	AmeriSci Job #: 115061852
Email: ddukat@wattersonefm.com	Subject: PLM 5 day Results
	Client Project: 86234.01; 9845 Oak Place Court - Common

Date: Wednesday, June 24, 2015

Time: 10:04:12

Comments:

Number of Pages: 7
(including cover sheet)

CONFIDENTIALITY NOTICE: Unless otherwise indicated, the information contained in this communication is confidential information intended for use of the individual named above. If the reader of this communication is not the intended recipient, you are hereby notified that any dissemination, distribution or copying of this communication is prohibited. If you have received this communication in error, please immediately notify the sender by telephone and return the original message to the above address via the US Postal Service at our expense. Preliminary data reported here will be verified before final report is issued. Samples are disposed of in 60 days or unless otherwise instructed by the protocol or special instructions in writing. Thank you.

Certified Analysis Service 24 Hours A Day • 7 Days A Week Competitive Prices
visit our web site - www.amerisci.com

Boston • Los Angeles • New York • Richmond



PLM Bulk Asbestos Report

Watterson Environmental Group, LLC
Attn: Dave Dukat
5800 Monroe Street, Bldg A-2

Sylvania, OH 43560

Date Received 06/17/15 **AmeriSci Job #** 115061852
Date Examined 06/24/15 **P.O. #**
Page 1 **of** 5
RE: 86234.01; 9845 Oak Place Court - Common

Client No. / HGA	Lab No.	Asbestos Present	Total % Asbestos
STA-1 Location: Brown Stair Tread w/Yellow Mastic; 1st and 2nd Floor Analyst Description: Brown, Homogeneous, Non-Fibrous, Stair Tread Asbestos Types: Other Material: Non-fibrous 100 %	115061852-01.1	No	NAD (by CVES) by Donna M. Blackwell on 06/24/15
STA-1 Location: Brown Stair Tread w/Yellow Mastic; 1st and 2nd Floor Analyst Description: Yellow/Brown, Heterogeneous, Non-Fibrous, Mastic Asbestos Types: Other Material: Cellulose 2 %, Non-fibrous 98 %	115061852-01.2	No	NAD (by CVES) by Donna M. Blackwell on 06/24/15
STA-2 Location: Brown Stair Tread w/Yellow Mastic; 1st and 2nd Floor Analyst Description: Brown, Homogeneous, Non-Fibrous, Stair Tread Asbestos Types: Other Material: Non-fibrous 100 %	115061852-02.1	No	NAD (by CVES) by Donna M. Blackwell on 06/24/15
STA-2 Location: Brown Stair Tread w/Yellow Mastic; 1st and 2nd Floor Analyst Description: Yellow/Brown, Homogeneous, Non-Fibrous, Mastic Asbestos Types: Other Material: Non-fibrous 100 %	115061852-02.2	No	NAD (by CVES) by Donna M. Blackwell on 06/24/15
FTA-1 Location: 12x12 Beige FT w/Black Mastic; 1st and 2nd Floor Hallways Analyst Description: Beige, Homogeneous, Non-Fibrous, Floor Tile Asbestos Types: Other Material: Non-fibrous 100 % Comment: Note : No Floor Tile Mastic.	115061852-03	No	NAD (by CVES) by Donna M. Blackwell on 06/24/15

PLM Bulk Asbestos Report

86234.01; 9845 Oak Place Court - Common

Client No. / HGA	Lab No.	Asbestos Present	Total % Asbestos
FTA-2	115061852-04.1	No	NAD
<p>Location: 12x12 Beige FT w/Black Mastic; 1st and 2nd Floor Hallways</p> <p>Analyst Description: Beige, Homogeneous, Non-Fibrous, Cementitious, Floor Tile</p> <p>Asbestos Types:</p> <p>Other Material: Non-fibrous 100 %</p>			<p>(by CVES) by Donna M. Blackwell on 06/24/15</p>
FTA-2	115061852-04.2	No	NAD
<p>Location: 12x12 Beige FT w/Black Mastic; 1st and 2nd Floor Hallways</p> <p>Analyst Description: Black, Homogeneous, Non-Fibrous, Floor Tile Mastic</p> <p>Asbestos Types:</p> <p>Other Material: Cellulose 5 %, Non-fibrous 95 %</p>			<p>(by CVES) by Donna M. Blackwell on 06/24/15</p>
FTA-3	115061852-05.1	No	NAD
<p>Location: 12x12 Beige FT w/Black Mastic; 1st and 2nd Floor Hallways</p> <p>Analyst Description: Beige, Homogeneous, Non-Fibrous, Cementitious, Floor Tile</p> <p>Asbestos Types:</p> <p>Other Material: Non-fibrous 100 %</p>			<p>(by CVES) by Donna M. Blackwell on 06/24/15</p>
FTA-3	115061852-05.2	No	NAD
<p>Location: 12x12 Beige FT w/Black Mastic; 1st and 2nd Floor Hallways</p> <p>Analyst Description: Black, Homogeneous, Non-Fibrous, Floor Tile Mastic</p> <p>Asbestos Types:</p> <p>Other Material: Cellulose 3 %, Non-fibrous 97 %</p>			<p>(by CVES) by Donna M. Blackwell on 06/24/15</p>
FTB-1	115061852-06.1	No	NAD
<p>Location: 12x12 Beige FT w/Black Mastic; Laundry Room</p> <p>Analyst Description: Beige, Homogeneous, Non-Fibrous, Cementitious, Floor Tile</p> <p>Asbestos Types:</p> <p>Other Material: Non-fibrous 100 %</p>			<p>(by CVES) by Donna M. Blackwell on 06/24/15</p>
FTB-1	115061852-06.2	No	NAD
<p>Location: 12x12 Beige FT w/Black Mastic; Laundry Room</p> <p>Analyst Description: Black, Homogeneous, Non-Fibrous, Floor Tile Mastic</p> <p>Asbestos Types:</p> <p>Other Material: Cellulose 3 %, Non-fibrous 97 %</p>			<p>(by CVES) by Donna M. Blackwell on 06/24/15</p>

PLM Bulk Asbestos Report

86234.01; 9845 Oak Place Court - Common

Client No. / HGA	Lab No.	Asbestos Present	Total % Asbestos
DWA-1 Location: Drywall w/Joint Compound; Boiler Room	115061852-07.1	No	NAD (by CVES) by Donna M. Blackwell on 06/24/15
Analyst Description: White/Brown, Heterogeneous, Fibrous, Drywall			
Asbestos Types:			
Other Material: Cellulose 12 %, Fibrous glass 3 %, Non-fibrous 85 %			
DWA-1 Location: Drywall w/Joint Compound; Boiler Room	115061852-07.2	No	NAD (by CVES) by Donna M. Blackwell on 06/24/15
Analyst Description: White, Homogeneous, Fibrous, Bulk Material			
Asbestos Types:			
Other Material: Non-fibrous 100 %			
DWA-2 Location: Drywall w/Joint Compound; Boiler Room	115061852-08.1	No	NAD (by CVES) by Donna M. Blackwell on 06/24/15
Analyst Description: White/Brown, Heterogeneous, Fibrous, Drywall			
Asbestos Types:			
Other Material: Cellulose 12 %, Non-fibrous 88 %			
DWA-2 Location: Drywall w/Joint Compound; Boiler Room	115061852-08.2	No	NAD (by CVES) by Donna M. Blackwell on 06/24/15
Analyst Description: White, Heterogeneous, Fibrous, Joint Compound			
Asbestos Types:			
Other Material: Non-fibrous 100 %			
DWB-1 Location: Drywall w/Joint Compound; 1st and 2nd Floor Hallway and Laundry Room	115061852-09.1	No	NAD (by CVES) by Donna M. Blackwell on 06/24/15
Analyst Description: White/Brown, Heterogeneous, Fibrous, Drywall			
Asbestos Types:			
Other Material: Cellulose 12 %, Fibrous glass 3 %, Non-fibrous 85 %			
DWB-1 Location: Drywall w/Joint Compound; 1st and 2nd Floor Hallway and Laundry Room	115061852-09.2	No	NAD (by CVES) by Donna M. Blackwell on 06/24/15
Analyst Description: White, Heterogeneous, Fibrous, Joint Compound			
Asbestos Types:			
Other Material: Non-fibrous 100 %			

PLM Bulk Asbestos Report

86234.01; 9845 Oak Place Court - Common

Client No. / HGA	Lab No.	Asbestos Present	Total % Asbestos
DWB-2	115061852-10.1	No	NAD
Location: Drywall w/Joint Compound; 1st and 2nd Floor Hallway and Laundry Room			(by CVES) by Donna M. Blackwell on 06/24/15
Analyst Description: White/Brown, Heterogeneous, Fibrous, Drywall Asbestos Types: Other Material: Non-fibrous 100 %			
DWB-2	115061852-10.2	No	NAD
Location: Drywall w/Joint Compound; 1st and 2nd Floor Hallway and Laundry Room			(by CVES) by Donna M. Blackwell on 06/24/15
Analyst Description: White, Heterogeneous, Fibrous, Joint Compound Asbestos Types: Other Material: Non-fibrous 100 %			
BCA-1	115061852-11.1	No	NAD
Location: Brown Base Cove w/Yellow Mastic; 1st and 2nd Floor Hallway and Laundry Room			(by CVES) by Donna M. Blackwell on 06/24/15
Analyst Description: Brown, Homogeneous, Non-Fibrous, Cove Base Asbestos Types: Other Material: Non-fibrous 100 %			
BCA-1	115061852-11.2	No	NAD
Location: Brown Base Cove w/Yellow Mastic; 1st and 2nd Floor Hallway and Laundry Room			(by CVES) by Donna M. Blackwell on 06/24/15
Analyst Description: Yellow, Homogeneous, Non-Fibrous, Mastic Asbestos Types: Other Material: Non-fibrous 100 %			
BCA-2	115061852-12.1	No	NAD
Location: Brown Base Cove w/Yellow Mastic; 1st and 2nd Floor Hallway and Laundry Room			(by CVES) by Donna M. Blackwell on 06/24/15
Analyst Description: Brown, Homogeneous, Non-Fibrous, Cove Base Asbestos Types: Other Material: Non-fibrous 100 %			
BCA-2	115061852-12.2	No	NAD
Location: Brown Base Cove w/Yellow Mastic; 1st and 2nd Floor Hallway and Laundry Room			(by CVES) by Donna M. Blackwell on 06/24/15
Analyst Description: Yellow, Homogeneous, Non-Fibrous, Mastic Asbestos Types: Other Material: Non-fibrous 100 %			

Client Name: Watterson Environmental Group, LLC

PLM Bulk Asbestos Report

86234.01; 9845 Oak Place Court - Common

Client No. / HGA	Lab No.	Asbestos Present	Total % Asbestos
CTA-1	115061852-13	No	NAD
<p>Location: Ceiling Texture, White; 1st and 2nd Floor Hallways</p> <p>Analyst Description: White, Homogeneous, Non-Fibrous, Bulk Material</p> <p>Asbestos Types:</p> <p>Other Material: Non-fibrous 100 %</p>			<p>(by CVES) by Donna M. Blackwell on 06/24/15</p>
CTA-2	115061852-14	No	NAD
<p>Location: Ceiling Texture, White; 1st and 2nd Floor Hallways</p> <p>Analyst Description: White, Heterogeneous, Fibrous, Bulk Material</p> <p>Asbestos Types:</p> <p>Other Material: Non-fibrous 100 %</p>			<p>(by CVES) by Donna M. Blackwell on 06/24/15</p>

Reporting Notes:

Analyzed by: Donna M. Blackwell *Donna M Blackwell* Date 6/24/15

*NAD = no asbestos detected, Detection Limit <1%, Reporting Limits: CVES = 1%, 400 Pt Ct = 0.25%, 1000 Pt Ct = 0.1%; "Present" or NVA = "No Visible Asbestos" are observations made during a qualitative analysis; NA = not analyzed; NA/PS = not analyzed / positive stop; PLM Bulk Asbestos Analysis by EPA 600/R-93/116 per 40 CFR 763 (NVLAP Lab Code 101904-0) and ELAP PLM Analysis Protocol 198.1 for New York friable samples which includes quantitation of any vermiculite observed (198.6 for NOB samples) or EPA 400 pt ct by EPA 600/M4-82-020 (NYSDOH ELAP Lab # 10984); CA ELAP Lab # 2508; Note: PLM is not consistently reliable in detecting asbestos in floor coverings and similar NOB materials. NAD or Trace results by PLM are inconclusive, TEM is currently the only method that can be used to determine if this material can be considered or treated as non-asbestos-containing in New York State (also see EPA Advisory for floor tile, FR 59, 146, 38970, 8/1/94). NIST Accreditation requirements mandate that this report must not be reproduced except in full without the approval of the laboratory. This PLM report relates ONLY to the items tested.

Reviewed By: _____

Watterson Environmental and Facilities Management 1852

5580 Monroe St., Suite 103, Sylvania, Ohio 43560
 Phone - (419) 824-5210 Fax - (419) 824-5220

Asbestos Bulk Sample Log

Date of Survey: 6/11/15
 Project No.: 86234.01
 Project: 9845 Old Place Court - Common
 Contact Person: Dave Daleat

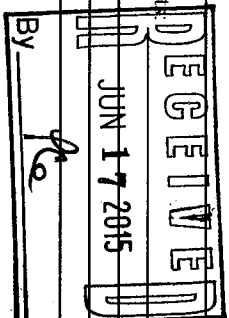
Lab. Analysis: PCM
 Turnaround Time: _____
 Page 1 of 1

Sample Number	HSA Number	Material	Functional Area	Sample Location
STA-1	STA	Brown sht floor w/	1st and 2nd Floor	Stairs
STA-2	STA	Yellow waste	↓	Stairs
ETA-1	ETA	12x12 Bigg FT w/	1st and 2nd Floor Hallways	1st Floor near main door
ETA-2	ETA	black waste	↓	1st Floor beneath steps
ETA-3	ETA	↓	↓	2nd Floor Hallway
ETB-1	ETB	12x12 Bigg FT w/ yellow waste	Laundry Room	Laundry Room
DWA-1	DWA	Drywall w/ joint compound	Boiler Room	Far wall
DWA-2	DWA	↓	↓	Regat cell
DWB-1	DWB	Drywall w/ joint compound	1st and 2nd Floor Hallway	1st Floor beneath steps
DWB-2	DWB	↓	1st and 2nd Floor Laundry Room	Laundry Room wall
BEA-1	BEA	Brown base cure	1st and 2nd Floor	1st Floor wall opposite stairs
BEA-2	BEA	w/ yellow waste	Hallways and Laundry Room	2nd Floor Laundry Room beneath counter
CTA-1	CTA	Cerling textured plate	1st and 2nd Floor	1st Floor beneath stairs
CTA-2	CTA	↓	Hallways	2nd Floor near top of stairs

Reintinguished By: [Signature]
 Date: 6/11/15
 Reintinguished By: _____
 Date: _____

Received By: _____
 Date: _____
 Received By: _____
 Date: _____

Comments:





Please Reply To:

AmeriSci Richmond

13635 GENITO ROAD

MIDLOTHIAN, VIRGINIA 23112

TEL: (804) 763-1200 • FAX: (804) 763-1800

FACSIMILE TELECOPY TRANSMISSION

To: Dave Dukat
Watterson Environmental Group, LLC
Fax #:
Email: ddukat@wattersonem.com

From: Jean L. Mayes
AmeriSci Job #: 115061847
Subject: PLM 5 day Results
Client Project: 86234.01; Vacant Unit 9842-C Oak Place CT

Date: Tuesday, June 23, 2015
Time: 17:01:20

Number of Pages: 5
(including cover sheet)

Comments:

CONFIDENTIALITY NOTICE: Unless otherwise indicated, the information contained in this communication is confidential information intended for use of the individual named above. If the reader of this communication is not the intended recipient, you are hereby notified that any dissemination, distribution or copying of this communication is prohibited. If you have received this communication in error, please immediately notify the sender by telephone and return the original message to the above address via the US Postal Service at our expense. Preliminary data reported here will be verified before final report is issued. Samples are disposed of in 60 days or unless otherwise instructed by the protocol or special instructions in writing. Thank you.

Certified Analysis Service 24 Hours A Day • 7 Days A Week Competitive Prices
visit our web site - www.amerisci.com

Boston • Los Angeles • New York • Richmond

**AmeriSci Richmond**13635 GENITO ROAD
MIDLOTHIAN, VIRGINIA 23112
TEL: (804) 763-1200 • FAX: (804) 763-1800**PLM Bulk Asbestos Report**Watterson Environmental Group, LLC
Attn: Dave Dukat
5800 Monroe Street, Bldg A-2**Date Received** 06/17/15**Date Examined** 06/23/15**AmeriSci Job #** 115061847**P.O. #****Page** 1 **of** 3**RE:** 86234.01; Vacant Unit 9842-C Oak Place CT

Sylvania, OH 43560

Client No. / HGA	Lab No.	Asbestos Present	Total % Asbestos
WCA-1 Location: White Window Caulk; Family Room, Bedrooms	115061847-01	No	NAD (by CVES) by Jean L. Mayes on 06/23/15
Analyst Description: White, Heterogeneous, Non-Fibrous, Bulk Material Asbestos Types: Other Material: Non-fibrous 100 %			
WCA-2 Location: White Window Caulk; Family Room, Bedrooms	115061847-02	No	NAD (by CVES) by Jean L. Mayes on 06/23/15
Analyst Description: White, Heterogeneous, Non-Fibrous, Bulk Material Asbestos Types: Other Material: Non-fibrous 100 %			
CTA-1 Location: White Ceiling Texture; Family Room, Hallway, Bedrooms	115061847-03	Yes	2 % (by CVES) by Jean L. Mayes on 06/23/15
Analyst Description: White, Heterogeneous, Non-Fibrous, Bulk Material Asbestos Types: Chrysotile 2.0 % Other Material: Non-fibrous 98 %			
CTA-2 Location: White Ceiling Texture; Family Room, Hallway, Bedrooms	115061847-04	Yes	2 % (by CVES) by Jean L. Mayes on 06/23/15
Analyst Description: White, Heterogeneous, Non-Fibrous, Bulk Material Asbestos Types: Chrysotile 2.0 % Other Material: Non-fibrous 98 %			
DWA-1 Location: White Drywall w/Joint Compound; Entire Unit	115061847-05	No	NAD (by CVES) by Jean L. Mayes on 06/23/15
Analyst Description: White/Brown, Heterogeneous, Non-Fibrous, Drywall Asbestos Types: Other Material: Cellulose 10 %, Non-fibrous 90 % Comment: No Joint Compound Fount			

Client Name: Watterson Environmental Group, LLC

PLM Bulk Asbestos Report

86234.01; Vacant Unit 9842-C Oak Place CT

Client No. / HGA	Lab No.	Asbestos Present	Total % Asbestos
DWA-2 Location: White Drywall w/Joint Compound; Entire Unit	115061847-06	No	NAD (by CVES) by Jean L. Mayes on 06/23/15
Analyst Description: White/Brown, Heterogeneous, Non-Fibrous, Drywall			
Asbestos Types:			
Other Material: Cellulose 10 %, Non-fibrous 90 %			
Comment: No Joint Compound Found			
FTA-1 Location: 12x12 Beige FT w/Black Mastic (Beneath Carpet); Family Room	115061847-07.1	No	NAD (by CVES) by Jean L. Mayes on 06/23/15
Analyst Description: Beige, Heterogeneous, Non-Fibrous, Floor Tile			
Asbestos Types:			
Other Material: Non-fibrous 100 %			
FTA-1 Location: 12x12 Beige FT w/Black Mastic (Beneath Carpet); Family Room	115061847-07.2		NA
Analyst Description: Mastic			
Asbestos Types:			
Other Material:			
Comment: Quantity Insufficient For Analysis			
FTB-1 Location: 12x12 Beige FT w/Black Mastic; Kitchen, Hallway, Family Room, Bedrooms	115061847-08.1	No	NAD (by CVES) by Jean L. Mayes on 06/23/15
Analyst Description: Beige, Heterogeneous, Non-Fibrous, Floor Tile			
Asbestos Types:			
Other Material: Non-fibrous 100 %			
FTB-1 Location: 12x12 Beige FT w/Black Mastic; Kitchen, Hallway, Family Room, Bedrooms	115061847-08.2	Yes	2 % (by CVES) by Jean L. Mayes on 06/23/15
Analyst Description: Black, Heterogeneous, Non-Fibrous, Mastic			
Asbestos Types: Chrysotile 2.0 %			
Other Material: Cellulose 4 %, Non-fibrous 94 %			

Client Name: Watterson Environmental Group, LLC

PLM Bulk Asbestos Report

86234.01; Vacant Unit 9842-C Oak Place CT

Client No. / HGA	Lab No.	Asbestos Present	Total % Asbestos
FTB-2	115061847-09.1	No	NAD
Location: 12x12 Beige FT w/Black Mastic; Kitchen, Hallway, Family Room, Bedrooms			(by CVES) by Jean L. Mayes on 06/23/15
Analyst Description: Beige, Heterogeneous, Non-Fibrous, Floor Tile Asbestos Types: Other Material: Non-fibrous 100 %			
FTB-2	115061847-09.2		NA
Location: 12x12 Beige FT w/Black Mastic; Kitchen, Hallway, Family Room, Bedrooms			
Analyst Description: Mastic Asbestos Types: Other Material: Comment: Quantity Insufficient For Analysis			
FTB-3	115061847-10.1	No	NAD
Location: 12x12 Beige FT w/Black Mastic; Kitchen, Hallway, Family Room, Bedrooms			(by CVES) by Jean L. Mayes on 06/23/15
Analyst Description: Beige, Heterogeneous, Non-Fibrous, Floor Tile Asbestos Types: Other Material: Non-fibrous 100 %			
FTB-3	115061847-10.2		NA
Location: 12x12 Beige FT w/Black Mastic; Kitchen, Hallway, Family Room, Bedrooms			
Analyst Description: Mastic Asbestos Types: Other Material: Comment: Quantity Insufficient For Analysis			

Reporting Notes:

Analyzed by: Jean L. Mayes  Date 6/23/15

*NAD = no asbestos detected, Detection Limit <1%, Reporting Limits: CVES = 1%, 400 Pt Ct = 0.25%, 1000 Pt Ct = 0.1%; "Present" or NVA = "No Visible Asbestos" are observations made during a qualitative analysis; NA = not analyzed; NA/PS = not analyzed / positive stop; PLM Bulk Asbestos Analysis by EPA 600/R-93/116 per 40 CFR 763 (NVLAP Lab Code 101904-0) and ELAP PLM Analysis Protocol 198.1 for New York friable samples which includes quantitation of any vermiculite observed (198.6 for NOB samples) or EPA 400 pt ct by EPA 600/M4-82-020 (NYSDOH ELAP Lab # 10984); CA ELAP Lab # 2508; Note: PLM is not consistently reliable in detecting asbestos in floor coverings and similar NOB materials. NAD or Trace results by PLM are inconclusive, TEM is currently the only method that can be used to determine if this material can be considered or treated as non-asbestos-containing in New York State (also see EPA Advisory for floor tile, FR 59, 146, 38970, 8/1/94). NIST Accreditation requirements mandate that this report must not be reproduced except in full without the approval of the laboratory. This PLM report relates ONLY to the items tested.

Reviewed By: _____

Watterson Environmental and Facilities Management

5580 Monroe St., Suite 103, Sylvania, Ohio 43560
 Phone - (419) 824-5210 Fax - (419) 824-5220

115061847

Asbestos Bulk Sample Log

Date of Survey: 5/29/15

Project No.: 90234101

Project: West Unit 9842-C Oak Place Ct

Contact Person: Dave Dukat

Lab. Analysis: PLM

Turnaround Time: _____

Page 1 Of 1

Sample Number	HSA Number	Material	Functional Area	Sample Location
WCA-1	WCA	White window caulk	Family Room, Bedrooms	Bedroom #2
WCA-2	WCA	↓	↓	Bedroom #3
CTA-1	CTA	White ceiling texture	Family Room, Hallway, Bedrooms	Bedroom #2 near door
CTA-2	CTA	↓	↓	Bedroom #3 near wall against bath room
DWA-1	DWA	White Drywall w/ joint compound	Bath room	Family Room on wall shared w/ Bedroom #1
DWA-2	↓	↓	↓	Bedroom #2 - outside wall
FCA-1	FCA	12x12 Beige FT w/ black mosaic (beneath carpet)	Family Room	Family Room - corner near Bedroom #1
FTB-1	FTB	12x12 Beige FT w/ black mosaic	Kitchen, Hallway, Family Room, Bedrooms	Closet in Kitchen
FTB-2				Bathroom near toilet

RECEIVED
 JUN 17 2015
 By: PLM

Relinquished By: _____
 Date: _____

Dukat
6/2/15

Received By: _____
 Date: _____

Comments: _____



Please Reply To:

AmeriSci Richmond

13635 GENITO ROAD
MIDLOTHIAN, VIRGINIA 23112
TEL: (804) 763-1200 • FAX: (804) 763-1800

FACSIMILE TELECOPY TRANSMISSION

To: Dave Dukat
Watterson Environmental Group, LLC
Fax #:
Email: ddukat@wattersonem.com

From: Jean L. Mayes
AmeriSci Job #: 115061853
Subject: PLM 5 day Results
Client Project: 86234.01; Exterior - Oak Place and Oak View

Date: Tuesday, June 23, 2015
Time: 16:35:36

Number of Pages: 5
(including cover sheet)

Comments:

CONFIDENTIALITY NOTICE: Unless otherwise indicated, the information contained in this communication is confidential information intended for use of the individual named above. If the reader of this communication is not the intended recipient, you are hereby notified that any dissemination, distribution or copying of this communication is prohibited. If you have received this communication in error, please immediately notify the sender by telephone and return the original message to the above address via the US Postal Service at our expense. Preliminary data reported here will be verified before final report is issued. Samples are disposed of in 60 days or unless otherwise instructed by the protocol or special instructions in writing. Thank you.

Certified Analysis Service 24 Hours A Day • 7 Days A Week Competitive Prices
visit our web site - www.amerisci.com

Boston • Los Angeles • New York • Richmond



AmeriSci Richmond

13635 GENITO ROAD
MIDLOTHIAN, VIRGINIA 23112
TEL: (804) 763-1200 • FAX: (804) 763-1800

PLM Bulk Asbestos Report

Watterson Environmental Group, LLC
Attn: Dave Dukat
5800 Monroe Street, Bldg A-2

Sylvania, OH 43560

Date Received 06/17/15 **AmeriSci Job #** 115061853
Date Examined 06/23/15 **P.O. #**
Page 1 of 3
RE: 86234.01; Exterior - Oak Place and Oak View

Client No. / HGA	Lab No.	Asbestos Present	Total % Asbestos
DCA-1 Location: White Door Caulk; Exterior	115061853-01	No	NAD (by CVES) by Jean L. Mayes on 06/23/15
Analyst Description: White, Heterogeneous, Non-Fibrous, Bulk Material Asbestos Types: Other Material: Non-fibrous 100 %			
DCA-2 Location: White Door Caulk; Exterior	115061853-02	No	NAD (by CVES) by Jean L. Mayes on 06/23/15
Analyst Description: Gray, Heterogeneous, Non-Fibrous, Bulk Material Asbestos Types: Other Material: Non-fibrous 100 %			
WCA-1 Location: White Window and Exterior Caulk; Exterior	115061853-03	No	NAD (by CVES) by Jean L. Mayes on 06/23/15
Analyst Description: White, Heterogeneous, Non-Fibrous, Bulk Material Asbestos Types: Other Material: Non-fibrous 100 %			
WCA-2 Location: White Window and Exterior Caulk; Exterior	115061853-04	No	NAD (by CVES) by Jean L. Mayes on 06/23/15
Analyst Description: White, Heterogeneous, Non-Fibrous, Bulk Material Asbestos Types: Other Material: Non-fibrous 100 %			
WCA-3 Location: White Window and Exterior Caulk; Exterior	115061853-05	No	NAD (by CVES) by Jean L. Mayes on 06/23/15
Analyst Description: White, Heterogeneous, Non-Fibrous, Bulk Material Asbestos Types: Other Material: Non-fibrous 100 %			

Client Name: Watterson Environmental Group, LLC

PLM Bulk Asbestos Report

86234.01; Exterior - Oak Place and Oak View

Client No. / HGA	Lab No.	Asbestos Present	Total % Asbestos
WCC-1 Location: Clear Exterior Caulk; Exterior	115061853-06	No	NAD (by CVES) by Jean L. Mayes on 06/23/15
Analyst Description: Clear, Heterogeneous, Non-Fibrous, Bulk Material			
Asbestos Types:			
Other Material: Non-fibrous 100 %			
WCD-1 Location: White Exterior Caulk; Exterior	115061853-07	No	NAD (by CVES) by Jean L. Mayes on 06/23/15
Analyst Description: Gray, Heterogeneous, Non-Fibrous, Bulk Material			
Asbestos Types:			
Other Material: Non-fibrous 100 %			
WCD-2 Location: White Exterior Caulk; Exterior	115061853-08	No	NAD (by CVES) by Jean L. Mayes on 06/23/15
Analyst Description: Gray, Heterogeneous, Non-Fibrous, Bulk Material			
Asbestos Types:			
Other Material: Non-fibrous 100 %			
WCD-3 Location: White Exterior Caulk; Exterior	115061853-09	No	NAD (by CVES) by Jean L. Mayes on 06/23/15
Analyst Description: Gray, Heterogeneous, Non-Fibrous, Bulk Material			
Asbestos Types:			
Other Material: Non-fibrous 100 %			
WCE-1 Location: Grey Exterior Caulk; Exterior	115061853-10	No	NAD (by CVES) by Jean L. Mayes on 06/23/15
Analyst Description: Gray, Heterogeneous, Non-Fibrous, Bulk Material			
Asbestos Types:			
Other Material: Non-fibrous 100 %			

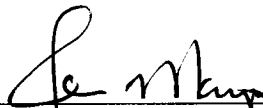
Client Name: Watterson Environmental Group, LLC

PLM Bulk Asbestos Report

86234.01; Exterior - Oak Place and Oak View

Reporting Notes:

Analyzed by: Jean L. Mayes



Date

6/23/15

*NAD = no asbestos detected, Detection Limit <1%, Reporting Limits: CVES = 1%, 400 Pt Ct = 0.25%, 1000 Pt Ct = 0.1%; "Present" or NVA = "No Visible Asbestos" are observations made during a qualitative analysis; NA = not analyzed; NA/PS = not analyzed / positive stop; PLM Bulk Asbestos Analysis by EPA 600/R-93/116 per 40 CFR 763 (NVLAP Lab Code 101904-0) and ELAP PLM Analysis Protocol 198.1 for New York friable samples which includes quantitation of any vermiculite observed (198.6 for NOB samples) or EPA 400 pt ct by EPA 600/M4-82-020 (NYSDOH ELAP Lab # 10984); CA ELAP Lab # 2508; Note: PLM is not consistently reliable in detecting asbestos in floor coverings and similar NOB materials. NAD or Trace results by PLM are inconclusive, TEM is currently the only method that can be used to determine if this material can be considered or treated as non-asbestos-containing in New York State (also see EPA Advisory for floor tile, FR 59, 146, 38970, 8/1/94). NIST Accreditation requirements mandate that this report must not be reproduced except in full without the approval of the laboratory. This PLM report relates ONLY to the items tested.

Reviewed By: _____

Watterson Environmental and Facilities Management

115061853

5580 Monroe St., Suite 103, Sylvania, Ohio 43560
 Phone - (419) 824-5210 Fax - (419) 824-5220

Asbestos Bulk Sample Log

Date of Survey: 6/11/15 Lab. Analysis: PLM
 Project No.: 86234.01
 Project: Exterior - Oak Place and Oak View
 Contact Person: Dave Debest Turnaround Time: _____ Page 1 of 1

Sample Number	HSA Number	Material	Functional Area	Sample Location
DCA-1	DCA	White Door caulk	Exterior	Main door to 345 Oak View Ct
DCA-2	DCA	↓	↓	Main door to 9842 Oak Place Ct
WCA-1	WCA	White windows and exterior	Exterior	1 st Floor window 345 Oak View Ct
WCA-2	WCA	caulk	↓	1 st Floor Window 9842 Oak Place Ct
WCA-3	WCA	↓	↓	Exterior caulk SW corner of 350 Oak View Ct
BCC-1	BCC	Clear exterior caulk	Exterior	Around vent north side of 350 Oak View Ct
WCD-1	WCD	White exterior caulk	Exterior	Northeast corner of 352-358 Oak View Ct
WCD-2	WCD	↓	↓	West side of 9842 Oak Place Ct
WCD-3	WCD	↓	↓	SW corner of 9839-9837 Oak Place Ct
WCE-1	WCE	Grey exterior caulk	Exterior	Around vent 9845 Oak Place Ct

RECEIVED
 JUN 17 2015
 By: AK

Comments: _____

Received By: _____
 Date: _____
 Received By: _____
 Date: _____

Relinquished By: [Signature]
 Date: _____
 Relinquished By: [Signature]
 Date: _____