

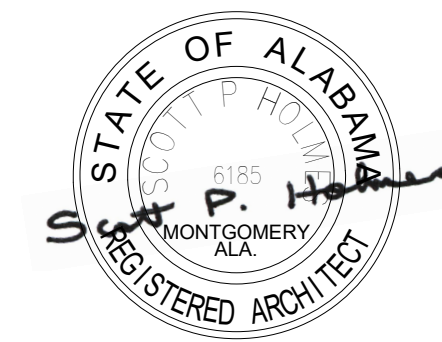
PCHA CHUCK ROBERT GYMNASIUM FLOOR REPLACEMENT

100 16TH ST, PHENIX CITY, ALABAMA 36867

JANUARY 22, 2024



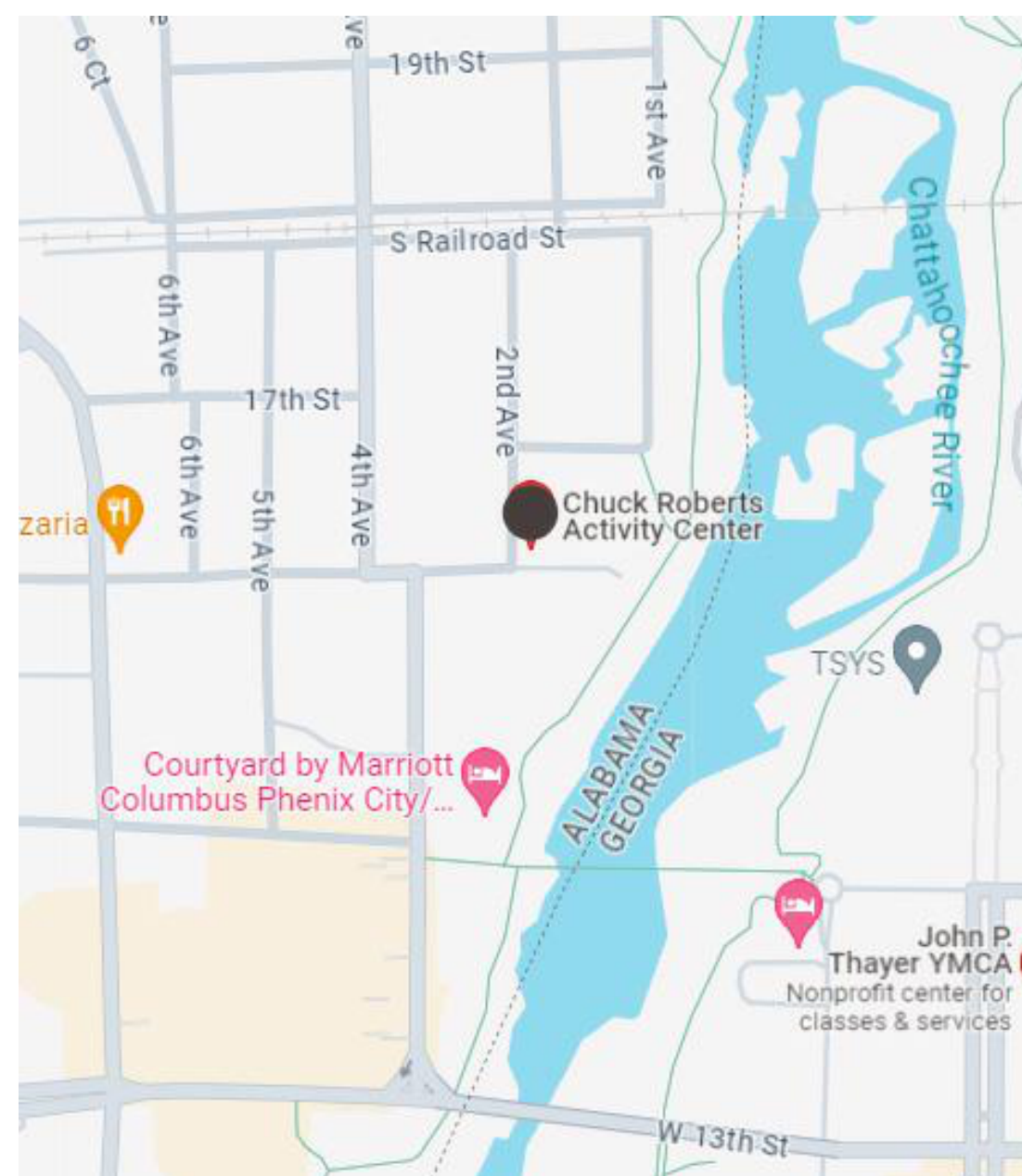
8 - 11th Street, Suite 300 ■ P.O. Box 1758 ■ Columbus, GA 31902 ■ 706-323-1814 telephone ■ www.hechtburdeshaw.com



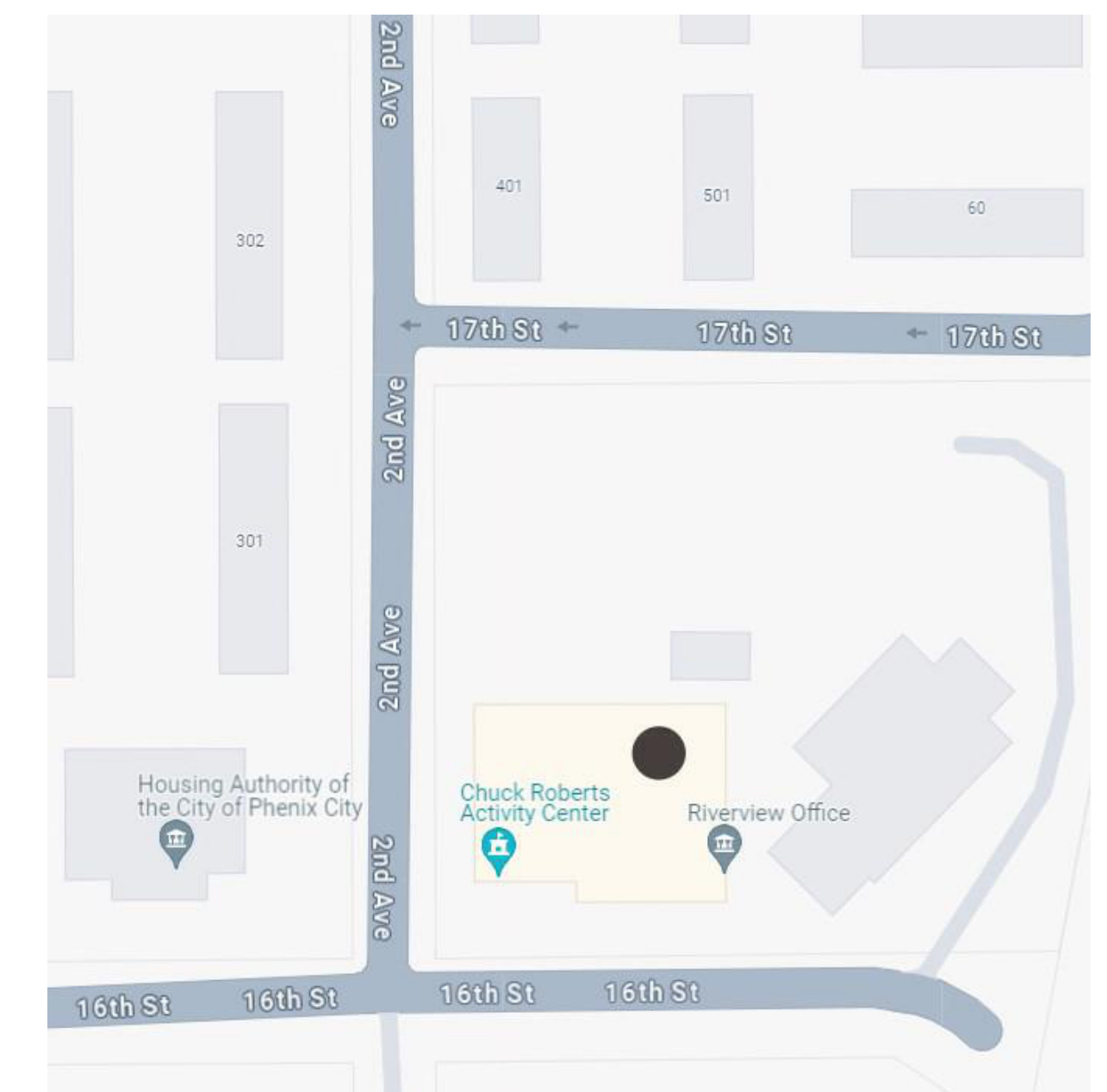
DRAWING INDEX

ARCHITECTURAL

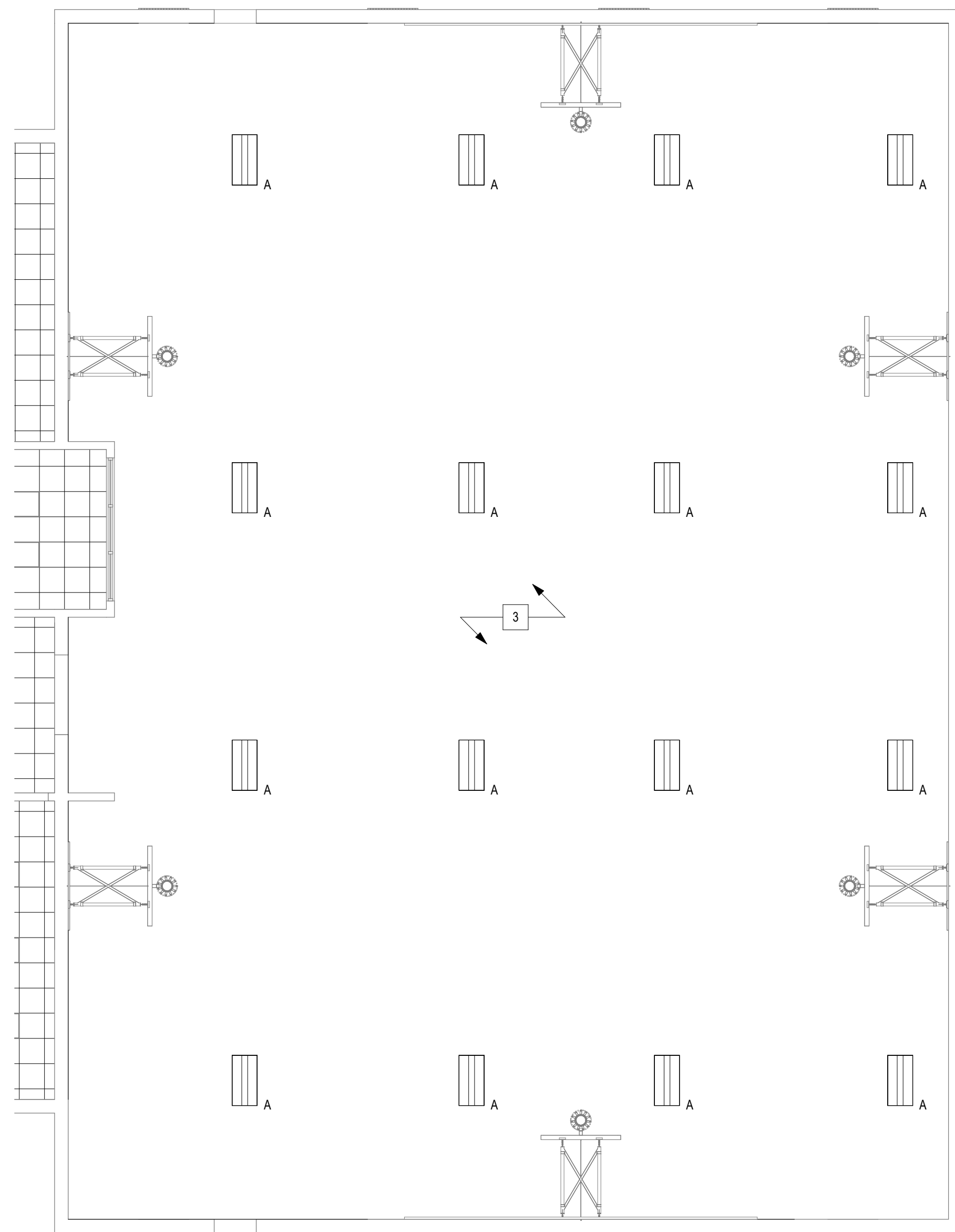
- T.0 TITLE SHEET AND INDEX TO DRAWINGS
- A1.0 FINISH FLOOR PLAN
- A2.0 INTERIOR ELEVATIONS



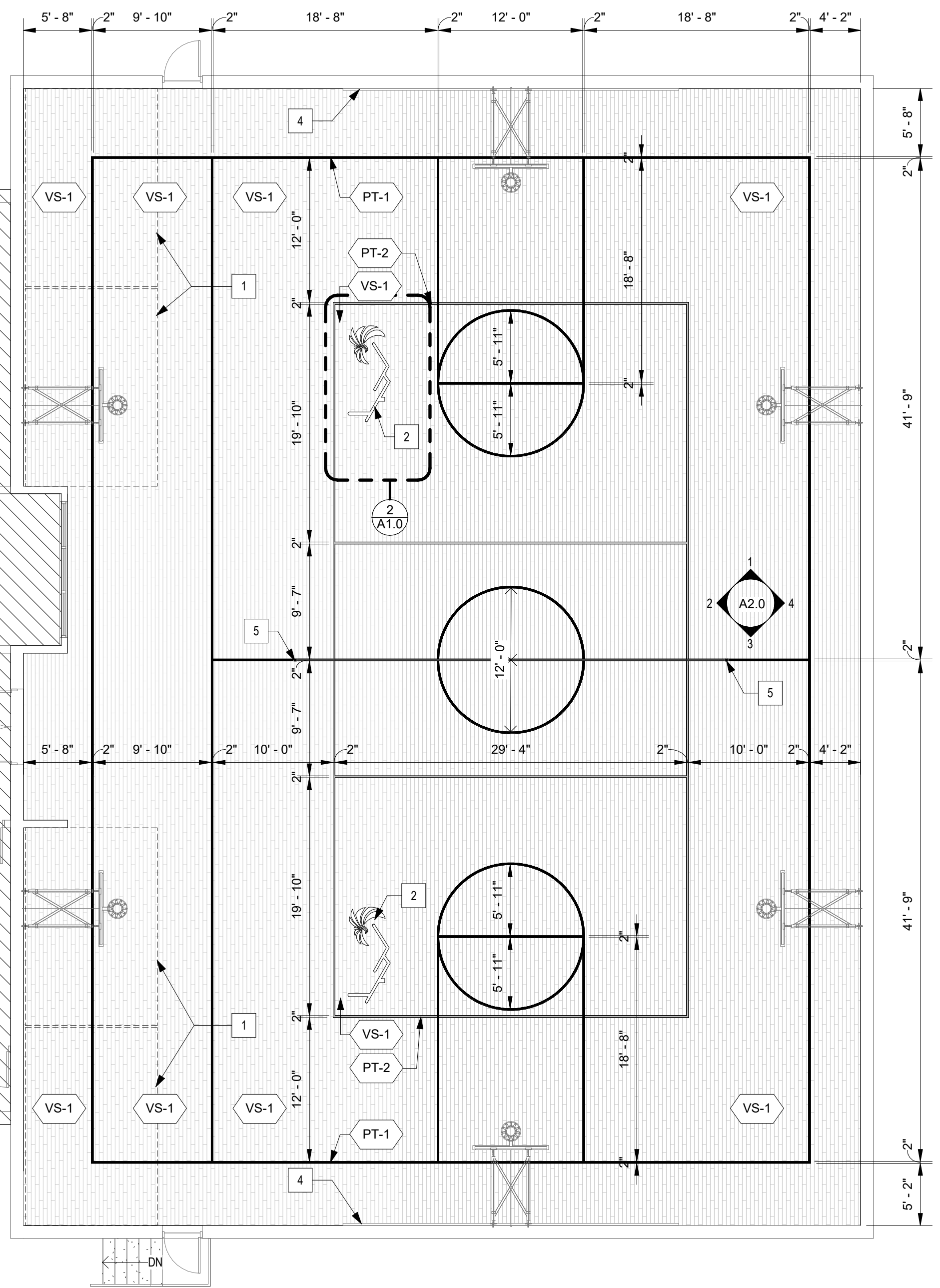
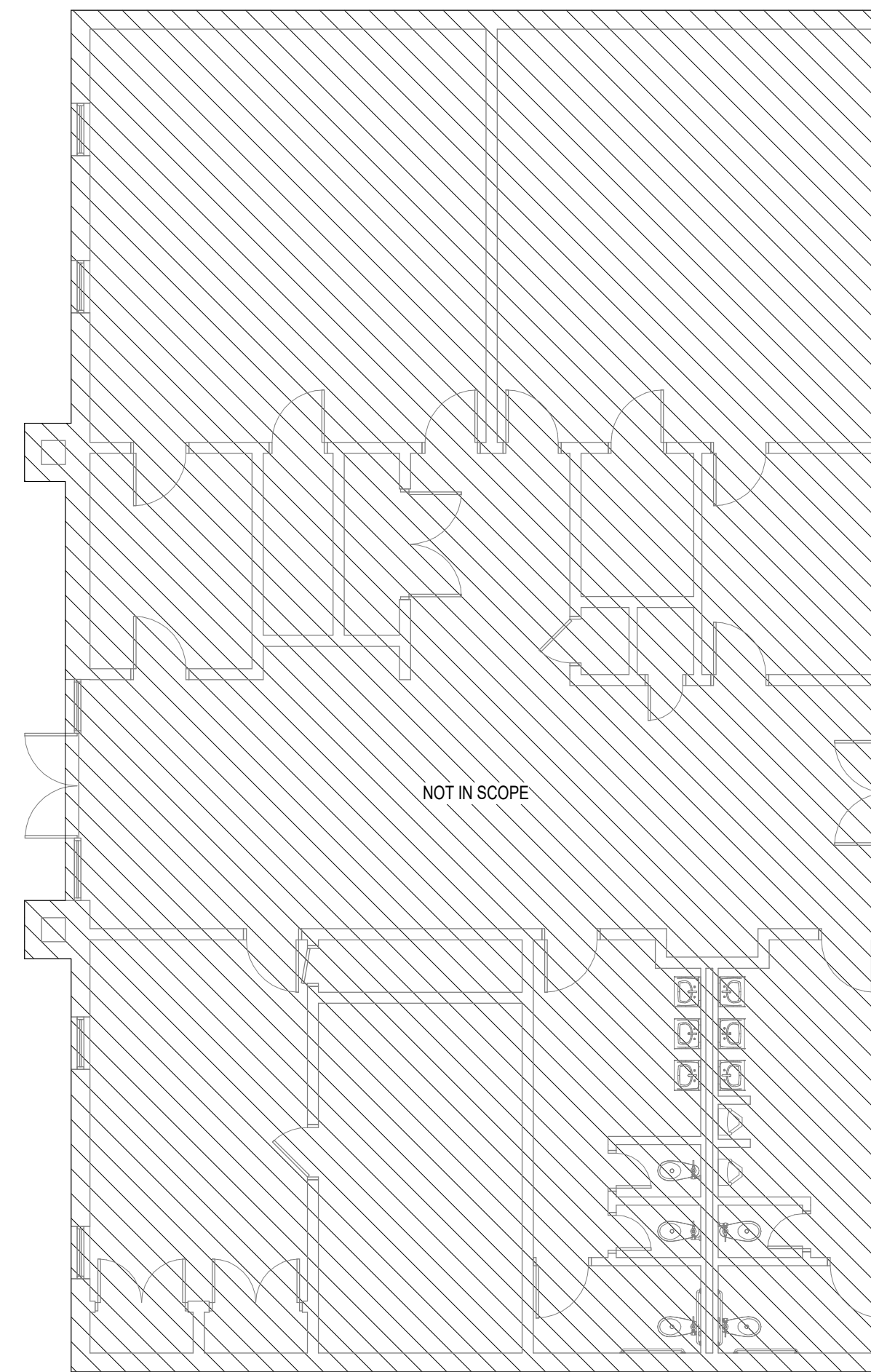
LOCATION MAP



SITE MAP



3 REFLECTED CEILING PLAN
A1.0 1/8" = 1'-0"



1 FIRST FLOOR FINISH PLAN
A1.0 1/8" = 1'-0"

LIGHTING SCHEDULE

SYMBOL	LABEL	IMAGE	QUANTITY	MANUFACTURER	CATALOG NUMBER	DESCRIPTION	NUMBER LAMPS	LUMENS PER LAMP	LIGHT LOSS FACTOR	WATTAGE
	A		16	LITHONIA LIGHTING	IBG 24000LM SEF AFL GND 40K 800CRI DWH	IBG LED HIGH BAY, 24 INCH, 24,000 LUMENS, STANDARD EFFICIENCY, ACRYLIC FROSTED LENS, GENERAL DISTRIBUTION, 4000K 80 CRI	1	24489	0.95	147.85

FINISH LEGEND

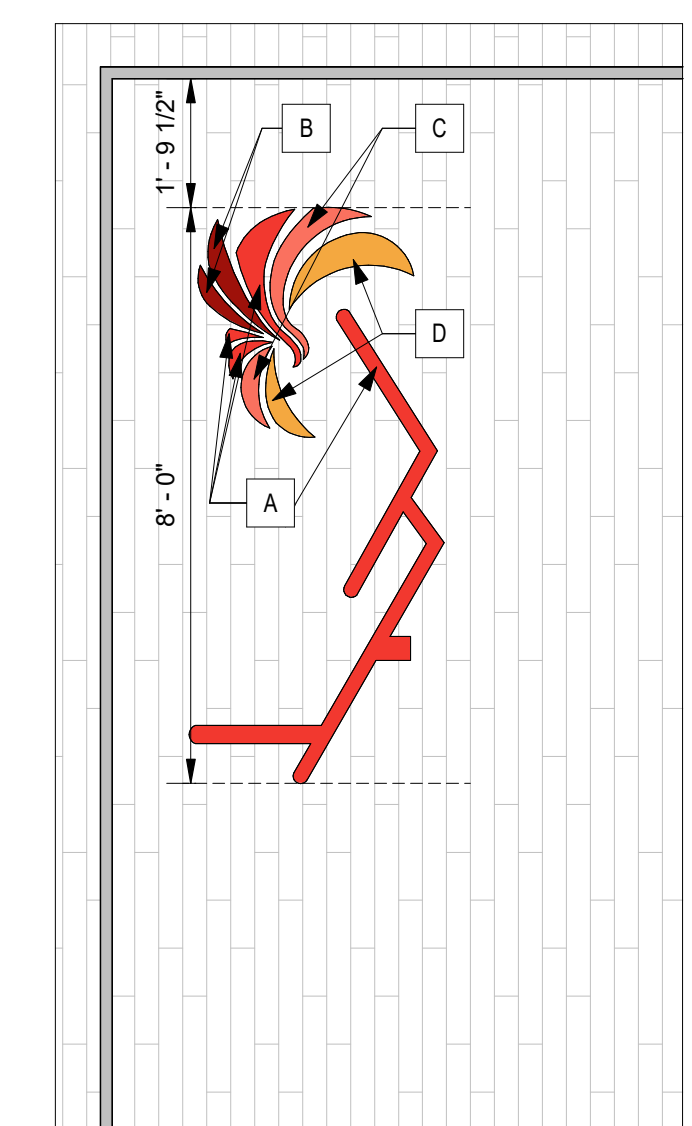
FLOORING:	BASE:	ALTERNATE 2: WALLS / TRIM:	ALTERNATE 3: FLOORING:
<p>VS-1 VINYL SHEET 1 LOCATION: AREAS INDICATED ON FINISHED FLOOR PLAN MANUFACTURER: GERFLOR PRODUCT: REC 45 COLOR: 6062 CANADIAN MAPLE SIZE: 86 ROLLS</p> <p>PT-1 PAINT 1 LOCATION: AREAS INDICATED ON FINISHED FLOOR PLAN MANUFACTURER: GERFLOR PRODUCT: GAMELINE PAINTS COLOR: 4400 RED - PMS 187C</p> <p>PT-2 PAINT 2 LOCATION: AREAS INDICATED ON FINISHED FLOOR PLAN MANUFACTURER: GERFLOR PRODUCT: GAMELINE PAINTS COLOR: 4200 BLACK - PMS BLACK C</p>	<p>RB-1 RUBBER BASE MANUFACTURER: JOHNSONITE COLOR: 55 SILVER GREY SIZE: 6"X120" 1/8 TOE</p> <p>TS-1 TRANSITION STRIP MANUFACTURER: JOHNSONITE PRODUCT: SLIM LINE TRANSITIONS COLOR: 55 SILVER GREY</p>	<p>PT-3 PAINT 3 MANUFACTURER: SHERWIN WILLIAMS COLOR: SW7648 BIG CHILL</p> <p>PT-4 PAINT 4 MANUFACTURER: SHERWIN WILLIAMS COLOR: SW 6601 TANGER</p> <p>PT-5 PAINT 2 (BODY) MANUFACTURER: SHERWIN WILLIAMS COLOR: SW 7006 EXTRA WHITE</p>	<p>VCT-1 VINYL COMPOSITION TILE 1 LOCATION: AREAS INDICATED ON FINISHED FLOOR PLAN AS VS-1 MANUFACTURER: ARMSTRONG FLOORING PRODUCT: STANDARD EXCELON IMPERIAL TEXTURE COLOR: 51911 CLASSIC WHITE SIZE: 12"X12" INSTALLATION: QUARTER TURN</p> <p>VCT-2 VINYL COMPOSITION TILE 2 LOCATION: AREAS INDICATED ON FINISHED FLOOR PLAN AS PT-1 MANUFACTURER: ARMSTRONG FLOORING PRODUCT: STANDARD EXCELON IMPERIAL TEXTURE COLOR: 51915 CHARCOAL SIZE: 12"X12" - CUT TO STRIPING SIZE INSTALLATION: MONOLITHIC</p> <p>VCT-3 VINYL COMPOSITION TILE 3 LOCATION: AREAS INDICATED ON FINISHED FLOOR PLAN AS PT-2 MANUFACTURER: ARMSTRONG FLOORING PRODUCT: STANDARD EXCELON IMPERIAL TEXTURE COLOR: 51814 POMEGRANATE RED SIZE: 12"X12" - CUT TO STRIPING SIZE INSTALLATION: MONOLITHIC</p>

PROJECT KEY NOTES

- EXISTING BLEACHERS TO BE REMOVED, STORED AND REINSTALLED AFTER NEW FLOORING - COORDINATE STORAGE LOCATION W/ OWNER
- CUSTOM LOGO
- ALTERNATE 1: REPLACE EXISTING LIGHTING 1 FOR 1 WITH NEW LED FIXTURES
- EXISTING MATS TO BE REMOVED, STORED AND REINSTALLED AFTER NEW FLOORING - COORDINATE STORAGE LOCATION W/ OWNER
- EXISTING VOLLEYBALL NET TO BE REMOVED, STORED AND REINSTALLED AFTER NEW FLOORING - COORDINATE STORAGE LOCATION W/ OWNER

LOGO FINISH LEGEND

- A COLOR A - CUSTOM COLOR
- B COLOR B - CUSTOM COLOR
- C COLOR C - CUSTOM COLOR
- D COLOR D - CUSTOM COLOR



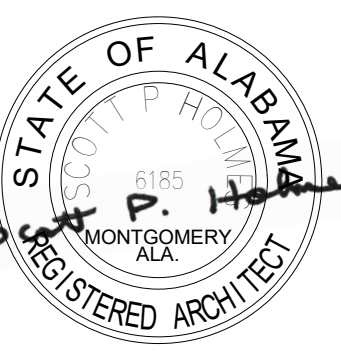
2 CUSTOM LOGO - ENLARGED PLAN
A1.0 3/8" = 1'-0"

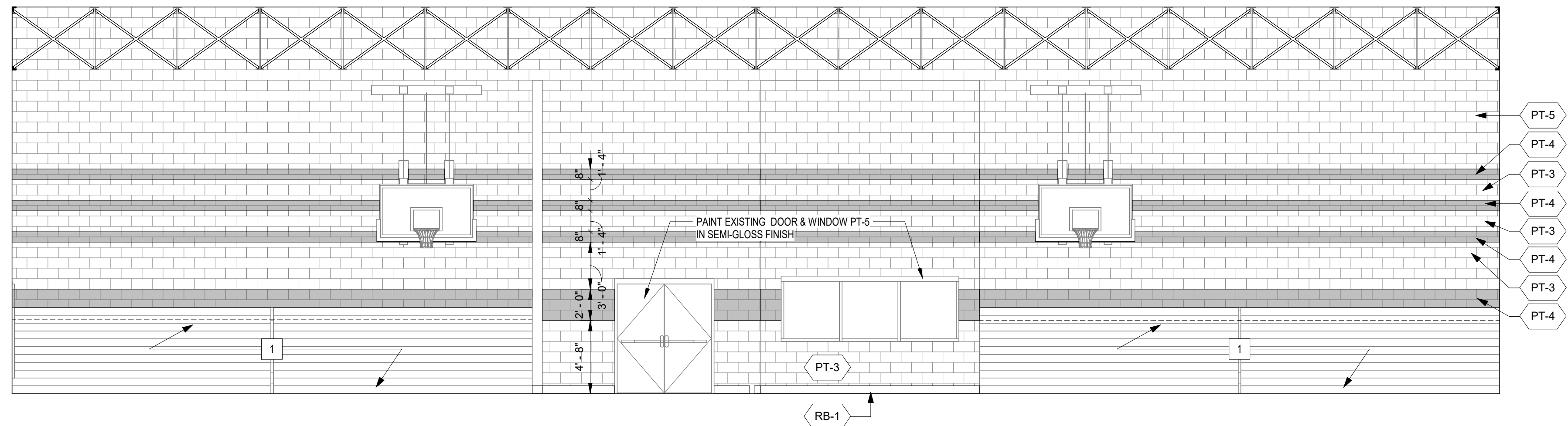
**PCHA CHUCK ROBERT GYMNASIUM
FLOOR REPLACEMENT**
100 16TH ST, PHENIX CITY, ALABAMA 36867

REVISION	DATE

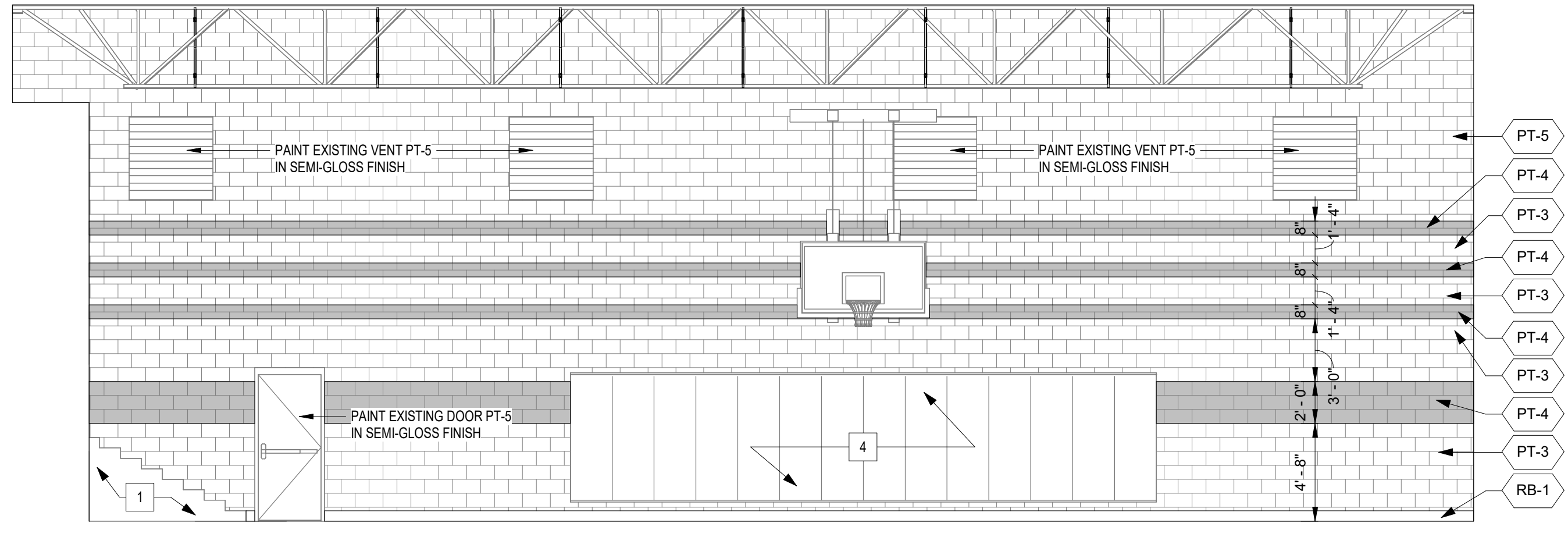
SHEET TITLE	
FINISH FLOOR PLAN	
DATE 01/22/24	SHEET A1.0
JOB 2015-028.23	

**Hecht
Burdeshaw
Architects, Inc.**
3120 Frederick Road, Suite D • Opelika, AL 36801-7133 • 334-626-8448 Telephone • www.hechtburdeshaw.com

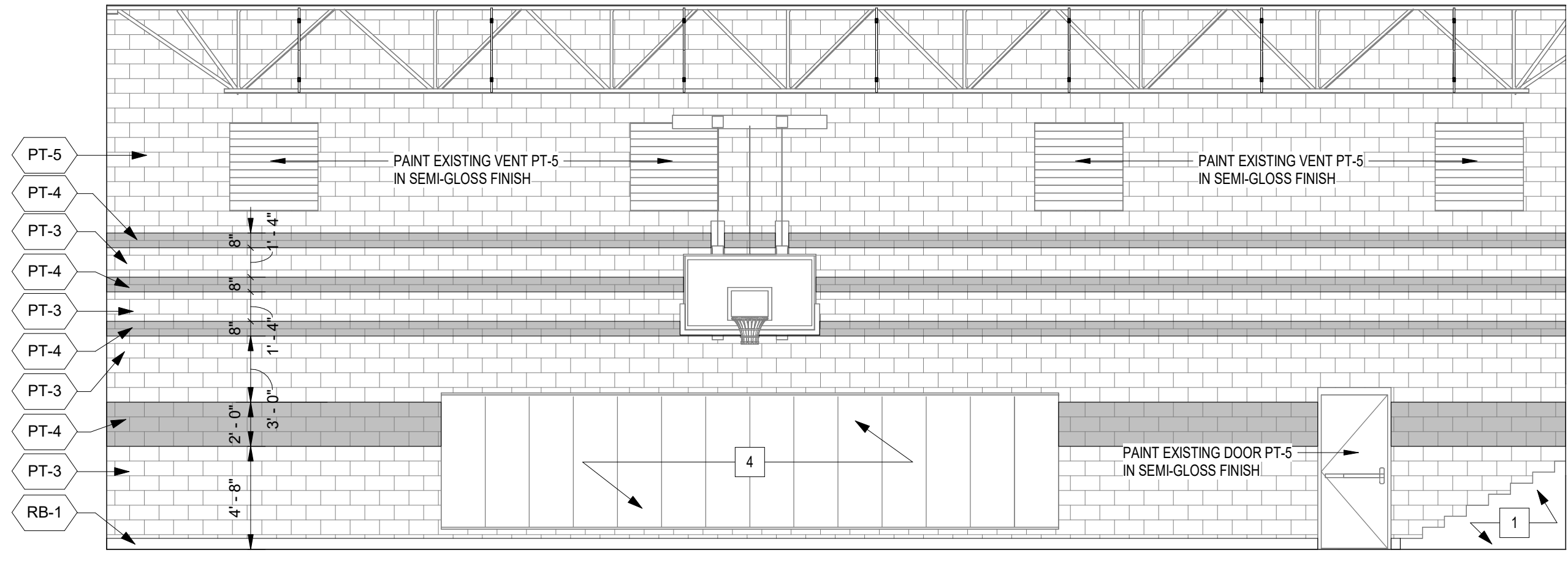




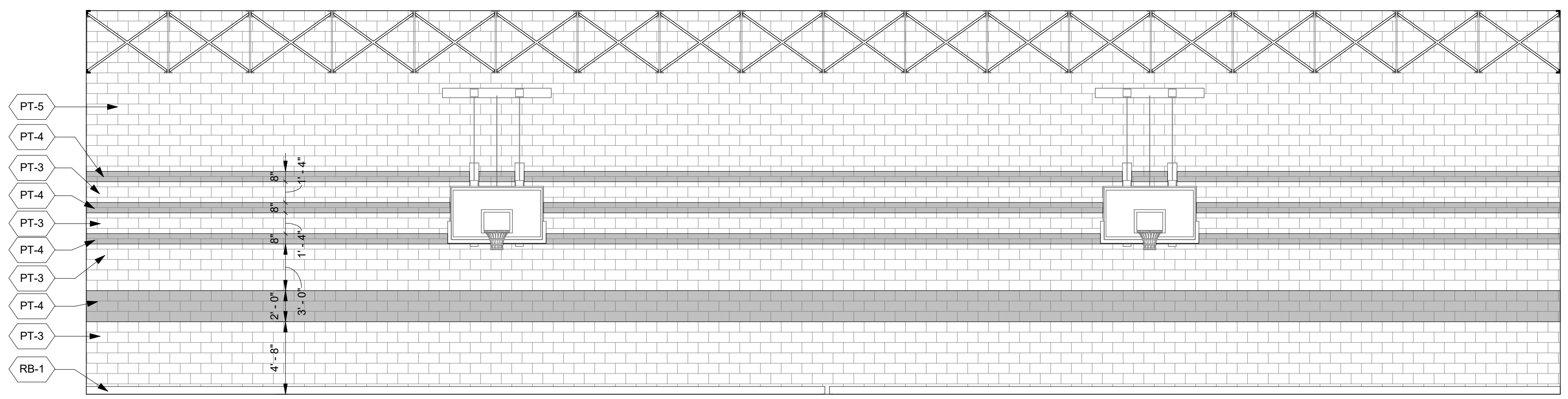
2 GYMNASIUM - EAST ELEVATION
A2.0 3/16" = 1'-0"



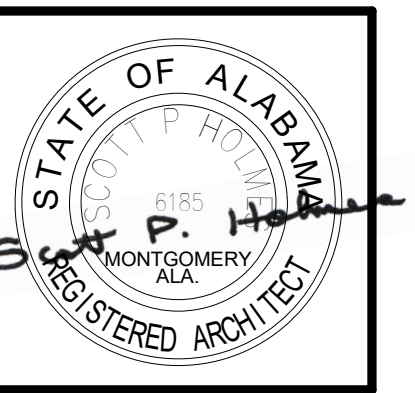
1 GYMNASIUM - NORTH ELEVATION
A2.0 3/16" = 1'-0"



3 GYMNASIUM - SOUTH ELEVATION
A2.0 3/16" = 1'-0"



4 GYMNASIUM - WEST ELEVATION
A2.0 3/16" = 1'-0"



REVISION	DATE

SHEET TITLE	
INTERIOR ELEVATIONS	
DATE	SHEET
01/22/24	A2.0
JOB	
2015-028.23	