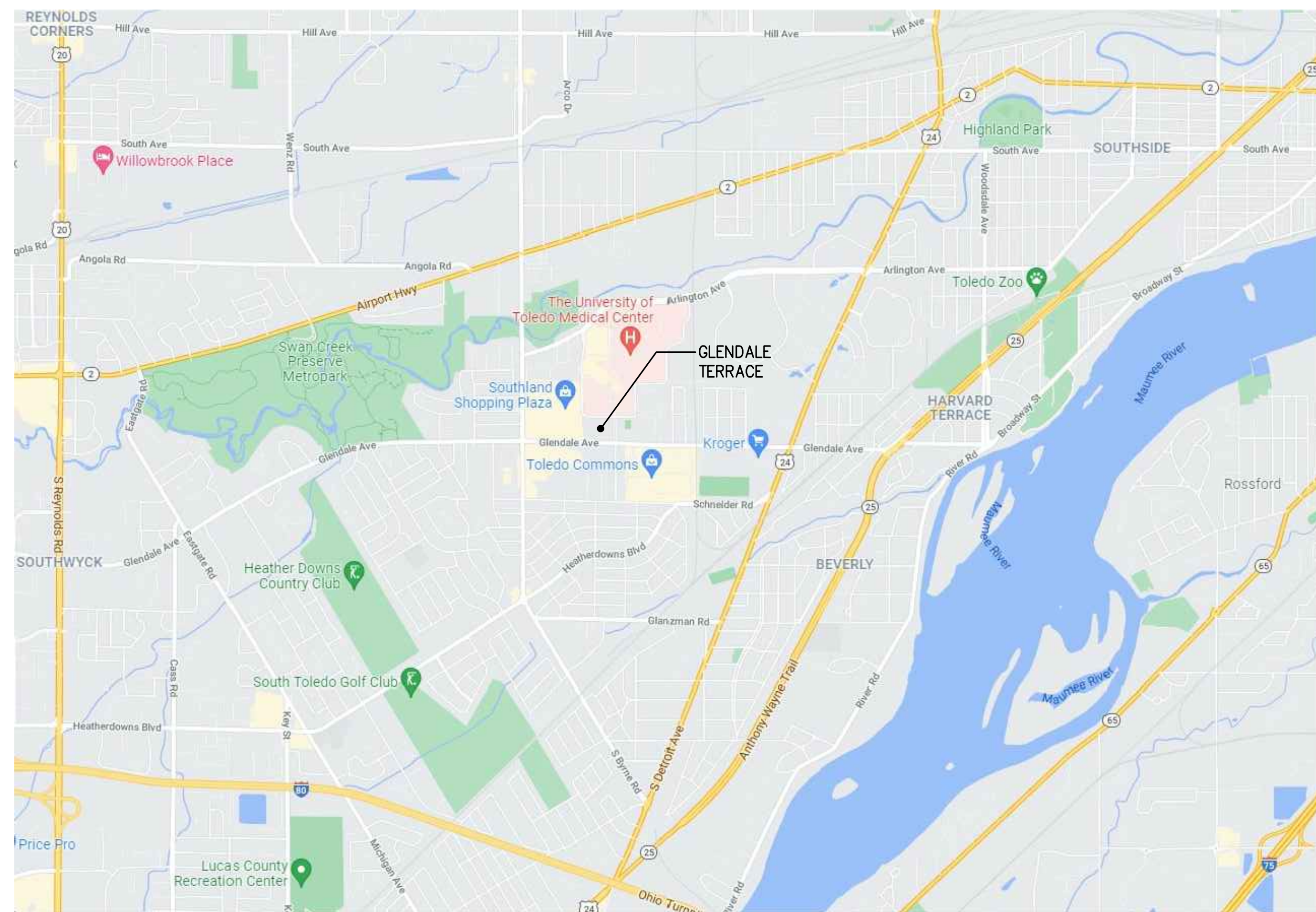




# FIRE ALARM SYSTEM UPGRADES FOR GLENDALE TERRACE, A LMH PROPERTY

3200 GLENDALE AVENUE, TOLEDO, OHIO



SITE LOCATION MAP  
NO SCALE

### SHEET LIST:

- G0.0 COVER SHEET
- E0.1 ELECTRICAL LEGEND, SCHEDULES, AND DETAILS
- E1.1 FIRST FLOOR PLAN - AREA A - FIRE ALARM
- E1.2 FIRST FLOOR PLAN - AREA B - FIRE ALARM
- E1.3 FIRST FLOOR PLAN - AREA C - FIRE ALARM
- E-1.4 FIRST FLOOR PLAN - AREA D - FIRE ALARM

### PREPARED BY:



**mda engineering, inc.**  
Mechanical and Electrical Engineers  
1415 Holland Road  
Maumee, Ohio 43537  
Phone: (419) 893-3141  
Fax: (419) 893-0687

**FIRE ALARM SYSTEM UPGRADES FOR  
GLENDALE TERRACE, A LMH PROPERTY**  
 3200 GLENDALE AVENUE  
 TOLEDO, OHIO

REV	DATE	DESCRIPTION

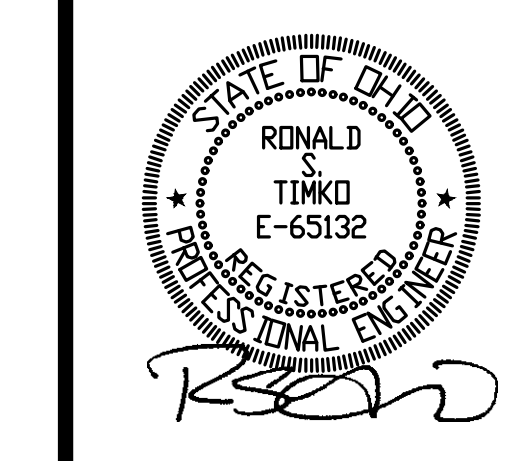
COVER SHEET

Drawn By:	Checked By:
RSK	RST
Date:	Job No:
01/23/24	21071

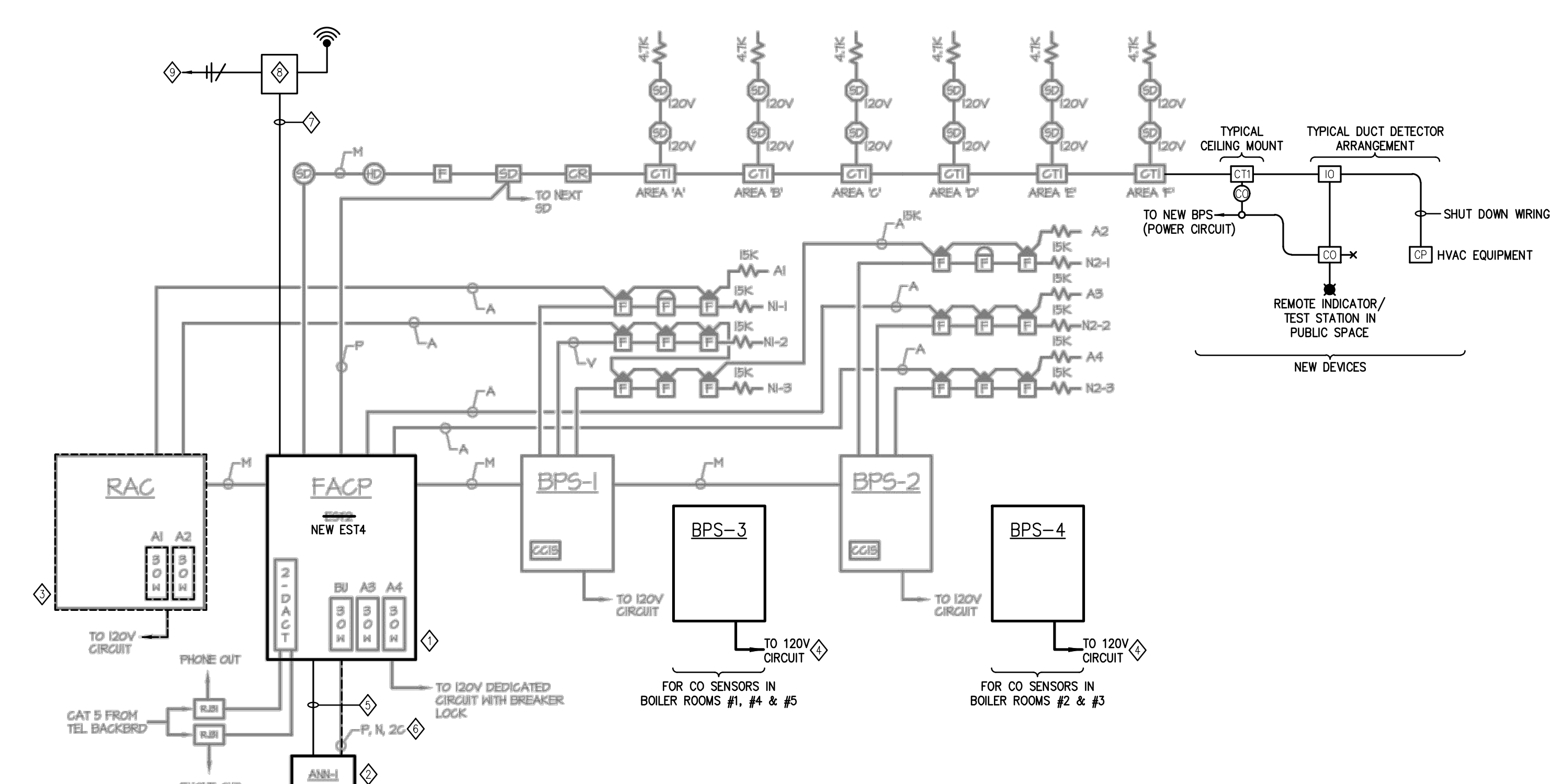
SHEET NO.

# G0.0





FIRE ALARM SYSTEM SYMBOL LEGEND	
SYMBOL	DESCRIPTION
[EACP]	FIRE ALARM CONTROL PANEL, ADDRESSABLE, SURFACE MOUNT; EST #EST4 SERIES
[ARN]	FIRE ALARM REMOTE ANNUNCIATOR WITH FIRE FIGHTERS HANDSET, SURFACE MOUNT; EST #4-XXANN SERIES
[C]	FIRE ALARM CARBON MONOXIDE DETECTOR WITH SOUNDER BASE AND NECESSARY MONITOR MODULES, ADDRESSABLE; CEILING MOUNTED; EST #SIGA-COD
[C]-K	FIRE ALARM DUCT TYPE CARBON MONOXIDE DETECTOR WITH SAMPLING TUBE, ADDRESSABLE WITH AUXILIARY CONTACTS WIRED FOR UNIT SHUTDOWN.
[BPS]	FIRE ALARM BOOSTER POWER SUPPLY FOR CO DEVICES. PROVIDE 120V BRANCH CIRCUIT FROM EXISTING BPS IN ROOM.
[CR]	FIRE ALARM ADDRESSABLE COMBINATION SUPERVISORY MODULE AND CONTROL RELAY, MOUNT IN/ON JUNCTION BOX; EST #SIGA-IO
[SM]	FIRE ALARM ADDRESSABLE SUPERVISORY MONITOR MODULE, SINGLE INPUT.
[■]	CO DUCT DETECTOR REMOTE ALARM TEST STATION; WALL MOUNTED IN PUBLIC SPACE NEAR EQUIPMENT WITH LABEL, M.H. 78" A.F.F. U.N.O.
[F]	EXISTING FIRE ALARM MANUAL PULL STATION.
[SD]	EXISTING FIRE ALARM SMOKE DETECTOR, PHOTOELECTRIC.
[SD] 120V	EXISTING FIRE ALARM SMOKE DETECTOR, 120VAC WITH BATTERY BACK-UP, PHOTOELECTRIC.
[HT]	EXISTING FIRE ALARM HEAT DETECTOR, FIXED TEMPERATURE.
[SD]	EXISTING FIRE ALARM SMOKE DETECTOR WITH VISUAL SIGNALING APPLIANCE, PHOTOELECTRIC.
[DD]	EXISTING FIRE ALARM DUCT DETECTOR, PHOTOELECTRIC.
[RTS]	EXISTING FIRE ALARM REMOTE TEST STATION.
[F]	EXISTING FIRE ALARM STROBE, CANDELA AS NOTED.
[F]	EXISTING FIRE ALARM SPEAKER.
[F]	EXISTING FIRE ALARM SPEAKER STROBE, CANDELA AS NOTED.
[RAC]	EXISTING FIRE ALARM REMOTE AMPLIFIER CABINET.
[BPS]	EXISTING FIRE ALARM BOOSTER POWER SUPPLY FOR NOTIFICATION DEVICES.
[CR]	EXISTING FIRE ALARM CONTROL RELAY.
[ZAM]	EXISTING FIRE ALARM 30 WATT ZONED AUDIO AMPLIFIER.
[CR]	EXISTING FIRE ALARM CONTROL RELAY.
-	



FIRE ALARM RISER DIAGRAM  
NO SCALE

- RISER DIAGRAM NOTES:**
- ◇ REPLACE EXISTING MAIN FIRE ALARM PANEL AND AMPLIFIER. RECONNECT EXISTING WIRING.
  - ◇ REPLACE EXISTING REMOTE ANNUNCIATOR. RECONNECT EXISTING WIRING.
  - ◇ EXISTING REMOTE AMP PANEL TO BE REMOVED. REMOVE EXISTING CIRCUITS INTO NEW FACP.
  - ◇ CIRCUIT TO EXISTING BPS IN ROOM.
  - ◇ NEW CAT-6 CABLE PER MANUFACTURERS REQUIREMENTS.
  - ◇ REUSE 1" CABLE AND REMOVE OTHER CONDUCTORS NO LONGER NEEDED.
  - ◇ CONDUCTORS AS REQUIRED/RECOMMENDED BY SYSTEM VENDOR.
  - ◇ CELLULAR COMMUNICATOR WITH BATTERY BACKUP AND WIRELESS COMMUNICATIONS TO REMOTE CENTRAL STATION MONITORING CENTER; NAPCO STARLINK OR COMPATIBLE MANUFACTURER.
  - ◇ 120V TO EXISTING FIRE ALARM BRANCH CIRCUIT SERVING MAIN PANEL.

**FIRE ALARM GENERAL NOTES:**

1. RISER DIAGRAM IS DIAGRAMMATIC AND DOES NOT INDICATE DEVICE QUANTITIES. SEE PLAN DRAWINGS FOR DEVICE QUANTITIES AND LOCATIONS.
2. SYSTEM SUPPLIER TO PROVIDE ALL NECESSARY DEVICES/COMPONENTS AND WIRING FOR A CODE COMPLIANT SYSTEM.
3. ALL DEVICES IN FINISHED AREAS ON STUD-WALL PARTITIONS SHALL UTILIZE RECESSED BOXES AND RACEWAY CONCEALED WITHIN THE STUD-WALL CAVITY.
4. ALL DEVICES IN FINISHED AREAS ON FINISHED CEILINGS SHALL UTILIZE THE MANUFACTURERS APPROVED BACK BOX APPROVED FOR USE WITH THE CEILING CONSTRUCTION WITH CABLES CONCEALED ABOVE THE CEILING PER CABLE PATHWAY REQUIREMENTS.
5. ALL DEVICES IN FINISHED AREAS ON MASONRY WALL CONSTRUCTION SHALL UTILIZE RECESSED BOXES AND RACEWAYS CONCEALED WITHIN THE MASONRY CONSTRUCTION.
6. ALL DEVICES IN AREAS WITHOUT CEILINGS SHALL UTILIZE SURFACE MOUNTED EMT ATTACHED TO THE STRUCTURAL PER SPECIFICATIONS AND CABLE PATHWAYS REQUIREMENT TO CONCEAL CABLES.

**FIRE ALARM CABLE PATHWAYS:**

- A. ALL FIRE ALARM WIRING AND CABLES SHALL BE IN CONDUIT OR OTHER RACEWAYS PER THE SPECIFICATIONS.
- B. FIRE ALARM CABLES SHALL BE IN SEPARATE RACEWAYS FROM ALL OTHER SYSTEMS.
- C. CABLES CONCEALED IN WALLS, BELOW FLOOR SLABS, IN CONCRETE OR ABOVE INACCESSIBLE CEILINGS SHALL BE IN RACEWAYS AND BOXES INSTALLED PER SPECIFICATIONS.
- D. CABLES PASSING THROUGH WALLS OR FLOORS OF ANY CONSTRUCTION MEANS SHALL BE IN CONDUIT EXTENDING A MINIMUM OF 6 INCHES OF EACH SIDE OF THE WALL OR FLOOR AND INCLUDE AN INSULATED BUSHING ON EACH END WHERE THE CABLE CONTINUES WITHOUT RACEWAY.
- E. CABLES ABOVE ACCESSIBLE CEILINGS SHALL BE ROUTED BETWEEN THE TOP AND BOTTOM CHORD OF STRUCTURAL STEEL AND SUPPORTED WITH J-HOOKS WITH MINIMUM SAGGING. EXPOSED CABLES SHALL BE PARALLEL AND PERPENDICULAR TO THE BUILDING STRUCTURAL COMPONENTS.
- F. CABLES IN OPEN EXPOSED UNFINISHED AREAS (MECHANICAL AND ATTN) SHALL BE IN SURFACE MOUNTED EMT AND BOXES SECURED TO THE STRUCTURE; THE FINAL LENGTH OF CONDUIT AND THE DEVICE BOX SHALL BE PRE-PAINTED RED.
- G. CABLES SHALL BE PLENUM RATED WHERE ROUTED CONCEALED IN ACCESSIBLE CEILINGS.

**GENERAL NOTES:**

- G1. EXISTING WALL SURFACES/FINISHES AFFECTED BY THIS WORK TO BE REPAIRED TO EXISTING CONDITIONS. THIS INCLUDES ALL NECESSARY PATCHING AND PAINTING WHERE NEW DEVICES ARE INSTALLED ON EXISTING SURFACES.
- G2. REFER TO SPECIFICATIONS FOR PROJECT REQUIREMENTS RELATING TO ASBESTOS ABATEMENT, AIR MONITORING, WORK AREAS, PROCEDURES, DISPOSAL, FORMS, ETC.

**PROJECT SCOPE SUMMARY**

- A. THE PROJECT INCLUDES REPLACEMENT OF EXISTING AGING AND OBSOLETE FIRE ALARM CONTROL PANEL, ASSOCIATED AMPLIFIER AND REMOTE ANNUNCIATOR, WITH A REUSE OF A MAJORITY OF EXISTING CABLING.
- B. THE PROJECT INCLUDES INSTALLATION OF NEW CARBON MONOXIDE DETECTION IN THE BUILDING IN ACCORDANCE WITH CURRENT OHIO FIRE CODE REQUIREMENTS.

REV	DATE	DESCRIPTION

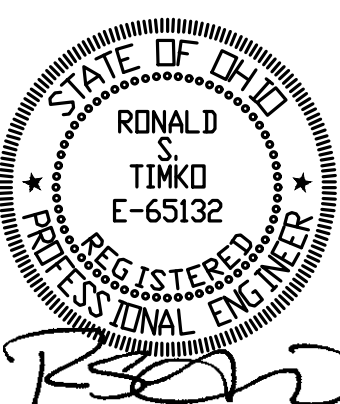
ELECTRICAL  
LEGEND,  
SCHEDULES  
AND DETAILS

Drawn By: RSK	Checked By: RST
Date: 01/23/24	Job No: 21071

SHEET NO.  
**E0.1**



mda engineering, inc.  
Mechanical and Electrical Engineers  
1415 Holland Road  
Marion, Ohio 43037  
Phone: (419) 893-3141  
Fax: (419) 893-0687



**LUCAS METROPOLITAN HOUSING**

**FIRE ALARM SYSTEM UPGRADES FOR  
GLENDALE TERRACE, A LMH PROPERTY**

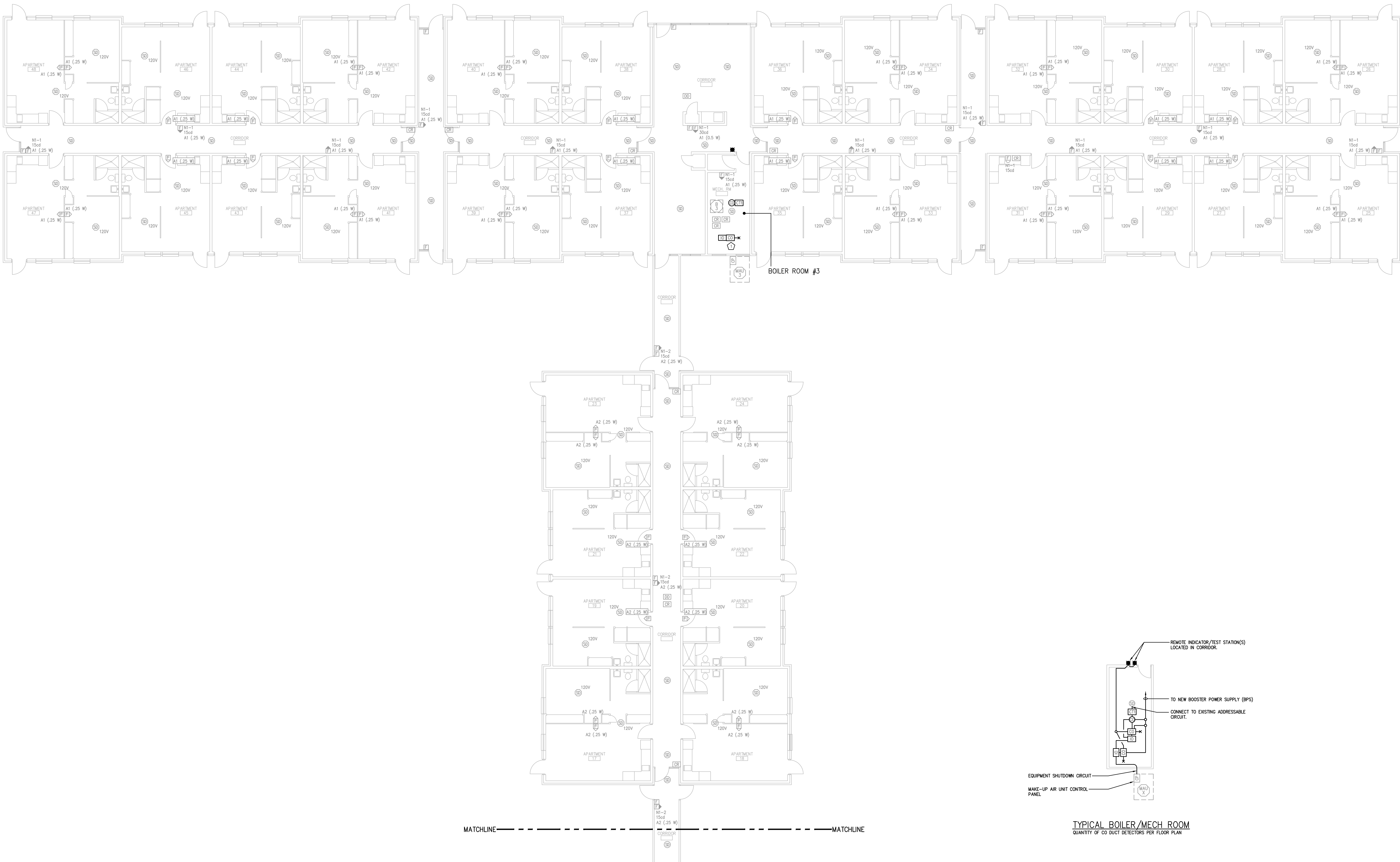
3200 GLENDALE AVENUE  
TOLEDO, OHIO

REV	DATE	DESCRIPTION

**FIRST FLOOR  
PLAN - AREA A -  
FIRE ALARM**

Drawn By: **RSK** Checked By: **RST**  
Date: **01/23/24** Job No: **21071**

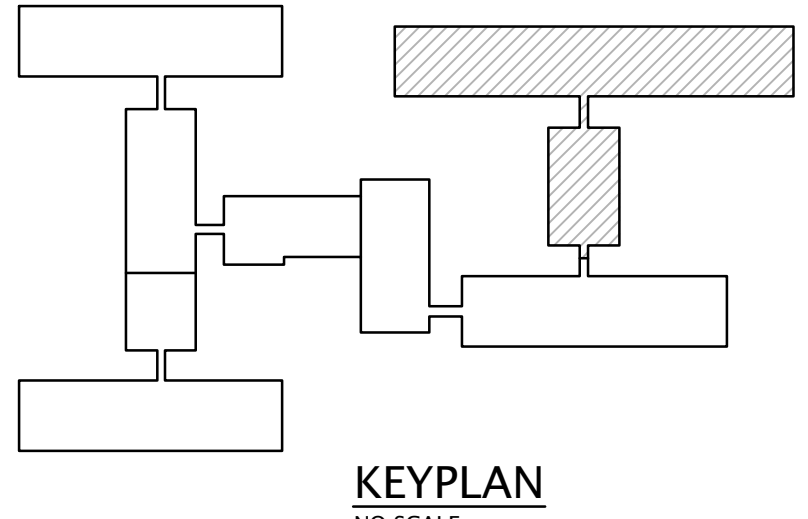
SHEET NO. **E1.1**



MATCHLINE ----- MATCHLINE

**FIRST FLOOR PLAN - AREA A - FIRE ALARM**  
1/8" = 1'-0"  
0 1 2 3 4 6 8 feet

**FLOOR PLAN NOTES:**  
 1. LOCATE CO DUCT DETECTOR IN MAU SUPPLY DUCT PER MANUFACTURERS INSTALLATION INSTRUCTIONS. PROVIDE DETECTOR FOR EACH DUCT BRANCH IN BOILER ROOM. REFER TO FLOOR PLAN FOR QUANTITIES.

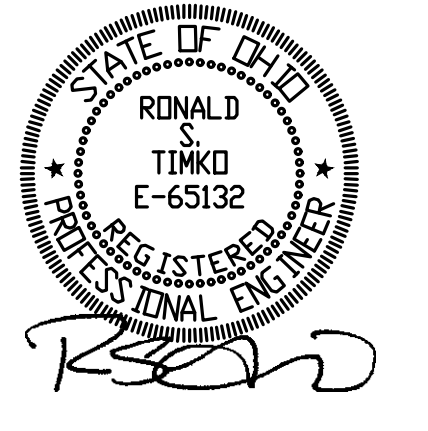


**KEYPLAN**  
NO SCALE



mda engineering, inc.

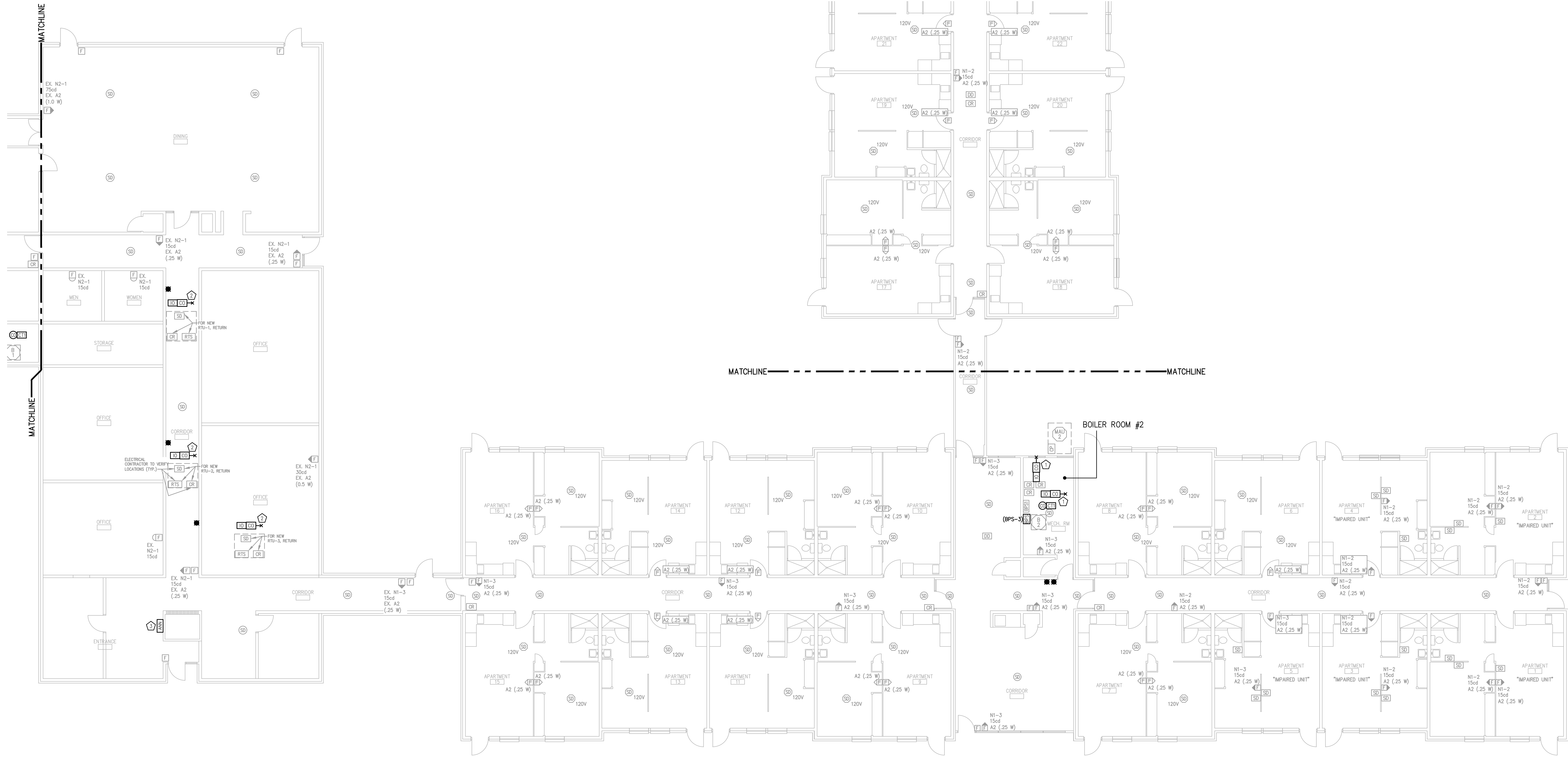
Mechanical and Electrical Engineers  
1415 Holland Road  
Mansfield, Ohio 43127  
Phone: (419) 893-3141  
Fax: (419) 893-0687



# LUCAS METROPOLITAN HOUSING

## FIRE ALARM SYSTEM UPGRADES FOR GLENDALE TERRACE, A LMH PROPERTY

3200 GLENDALE AVENUE  
TOLEDO, OHIO



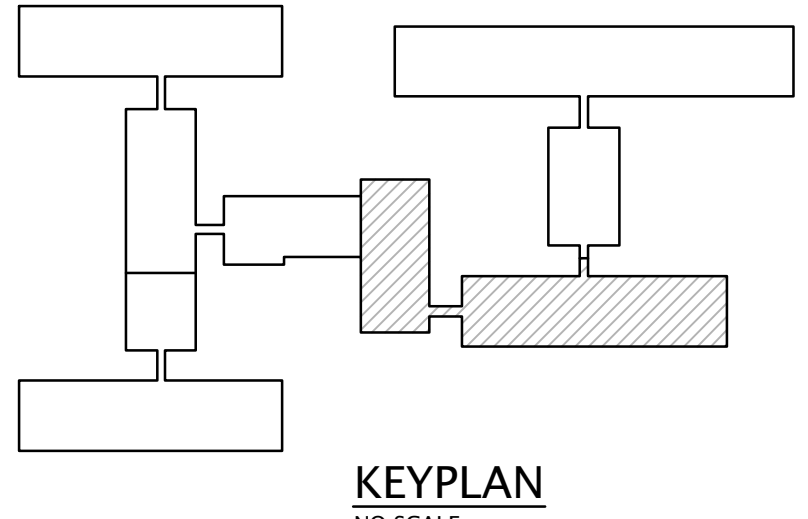
FIRST FLOOR PLAN - AREA B - FIRE ALARM  
1/8" = 1'-0"  
0 1 2 3 4 5 6 8 feet

- FLOOR PLAN NOTES:**
- 1. LOCATE CO DETECTOR IN MAU SUPPLY DUCT PER MANUFACTURERS INSTALLATION INSTRUCTIONS. PROVIDE DETECTOR FOR EACH DUCT BRANCH IN BOILER ROOM. REFER TO FLOOR PLAN FOR QUANTITIES.
  - 2. LOCATE CO DETECTOR IN RTU SUPPLY DUCT. LOCATE CO DETECTOR IN DUCT BEFORE ANY BRANCHES.
  - 3. REMOVE EXISTING ANNUNCIATOR AND REPLACE WITH NEW

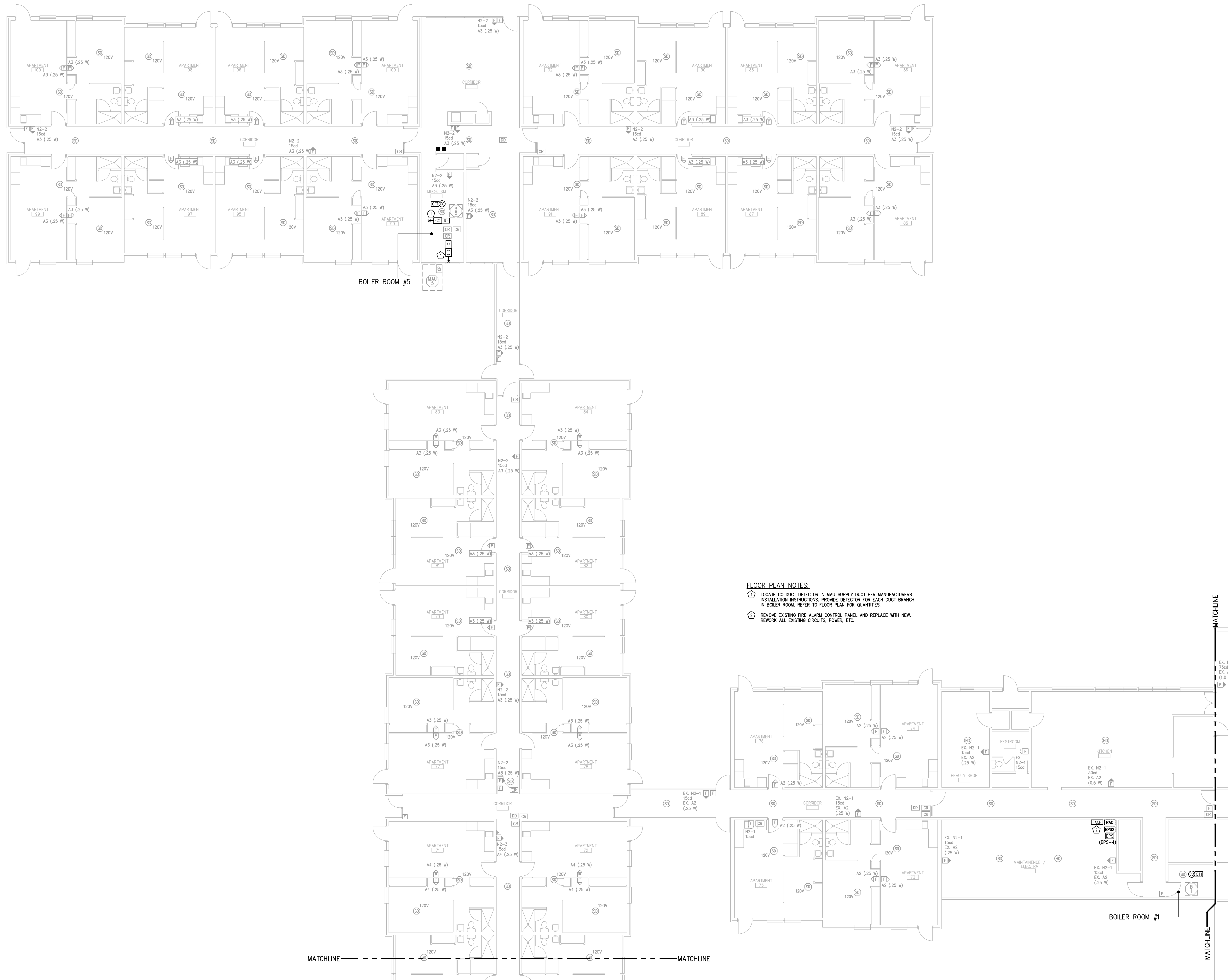
REV	DATE	DESCRIPTION

### FIRST FLOOR PLAN - AREA B - FIRE ALARM

Drawn By:	Checked By:
RSK	RST
Date:	Job No:
01/23/24	21071
SHEET NO.	



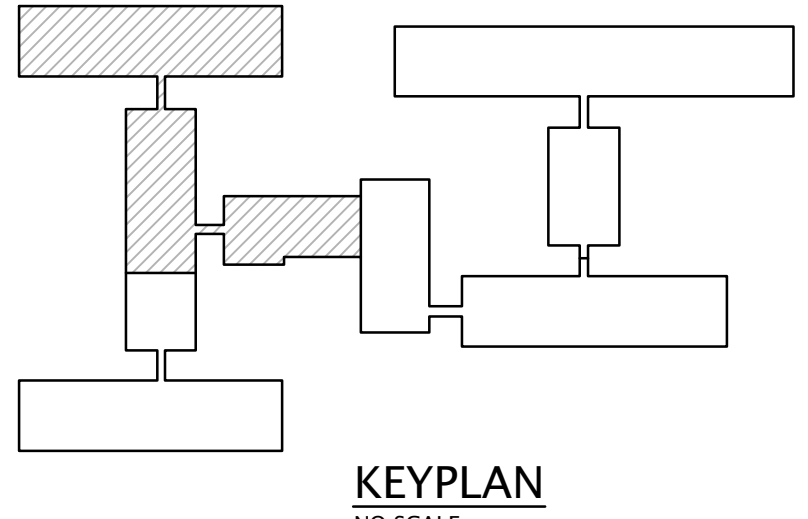
# E1.2



**FLOOR PLAN NOTES:**

- LOCATE CO DUCT DETECTOR IN MAU SUPPLY DUCT PER MANUFACTURERS INSTALLATION INSTRUCTIONS. PROVIDE DETECTOR FOR EACH DUCT BRANCH IN BOILER ROOM. REFER TO FLOOR PLAN FOR QUANTITIES.
- REMOVE EXISTING FIRE ALARM CONTROL PANEL AND REPLACE WITH NEW. REWORK ALL EXISTING CIRCUITS, POWER, ETC.

FIRST FLOOR PLAN - AREA C - FIRE ALARM  
 1/8" = 1'-0"  
 0 1 2 3 4 6 8 feet

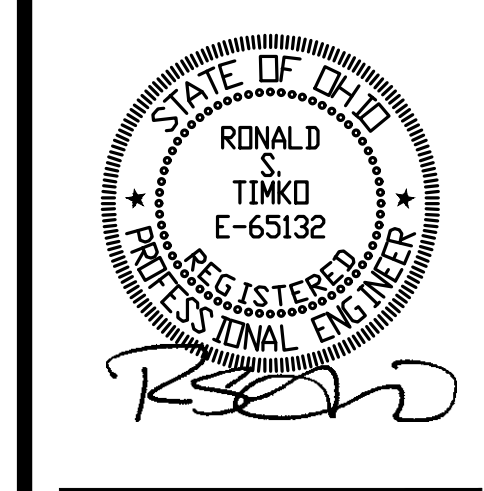


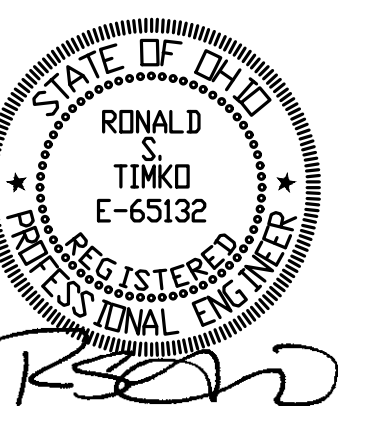
**FIRE ALARM SYSTEM UPGRADES FOR  
 GLENDALE TERRACE, A LMH PROPERTY**  
 3200 GLENDALE AVENUE  
 TOLEDO, OHIO

**FIRST FLOOR  
 PLAN - AREA C -  
 FIRE ALARM**

Drawn By: RSK	Checked By: RST
Date: 01/23/24	Job No: 21071
SHEET NO.	

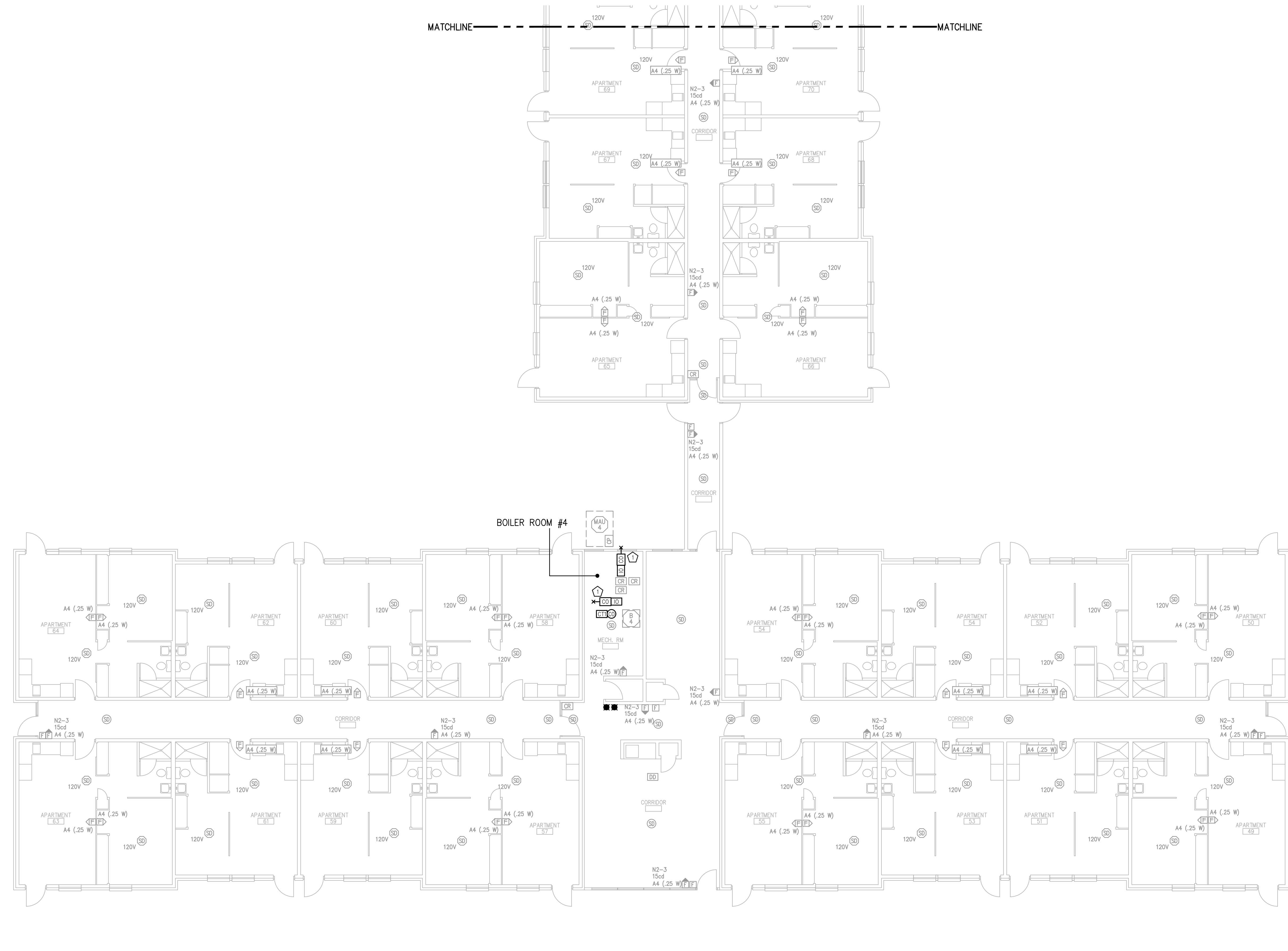
**E1.3**





FIRE ALARM SYSTEM UPGRADES FOR  
 GLENDALE TERRACE, A LMH PROPERTY  
 3200 GLENDALE AVENUE  
 TOLEDO, OHIO

MATCHLINE ———— MATCHLINE



FIRST FLOOR PLAN — AREA D — FIRE ALARM  
 0 1 2 3 4 6 8 feet  
 1/8" = 1'-0" N

FLOOR PLAN NOTES:  
 ☞ LOCATE CO DUCT DETECTOR IN MAU SUPPLY DUCT PER MANUFACTURERS  
 INSTALLATION INSTRUCTIONS. PROVIDE DETECTOR FOR EACH DUCT  
 BRANCH IN BOILER ROOM. REFER TO FLOOR PLAN FOR QUANTITIES.

REV	DATE	DESCRIPTION

FIRST FLOOR  
 PLAN - AREA D -  
 FIRE ALARM

Drawn By: RSK  
 Date: 01/23/24  
 Checked By: RST  
 Job No: 21071

SHEET NO.  
**E1.4**

