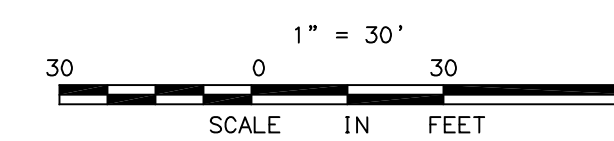
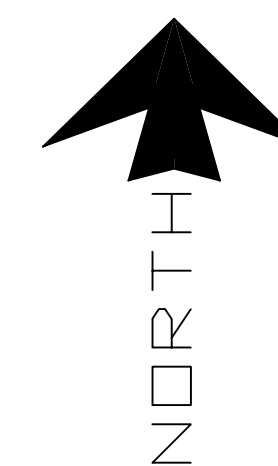


MATCHLINE - SHEET 5
MATCHLINE - SHEET 3

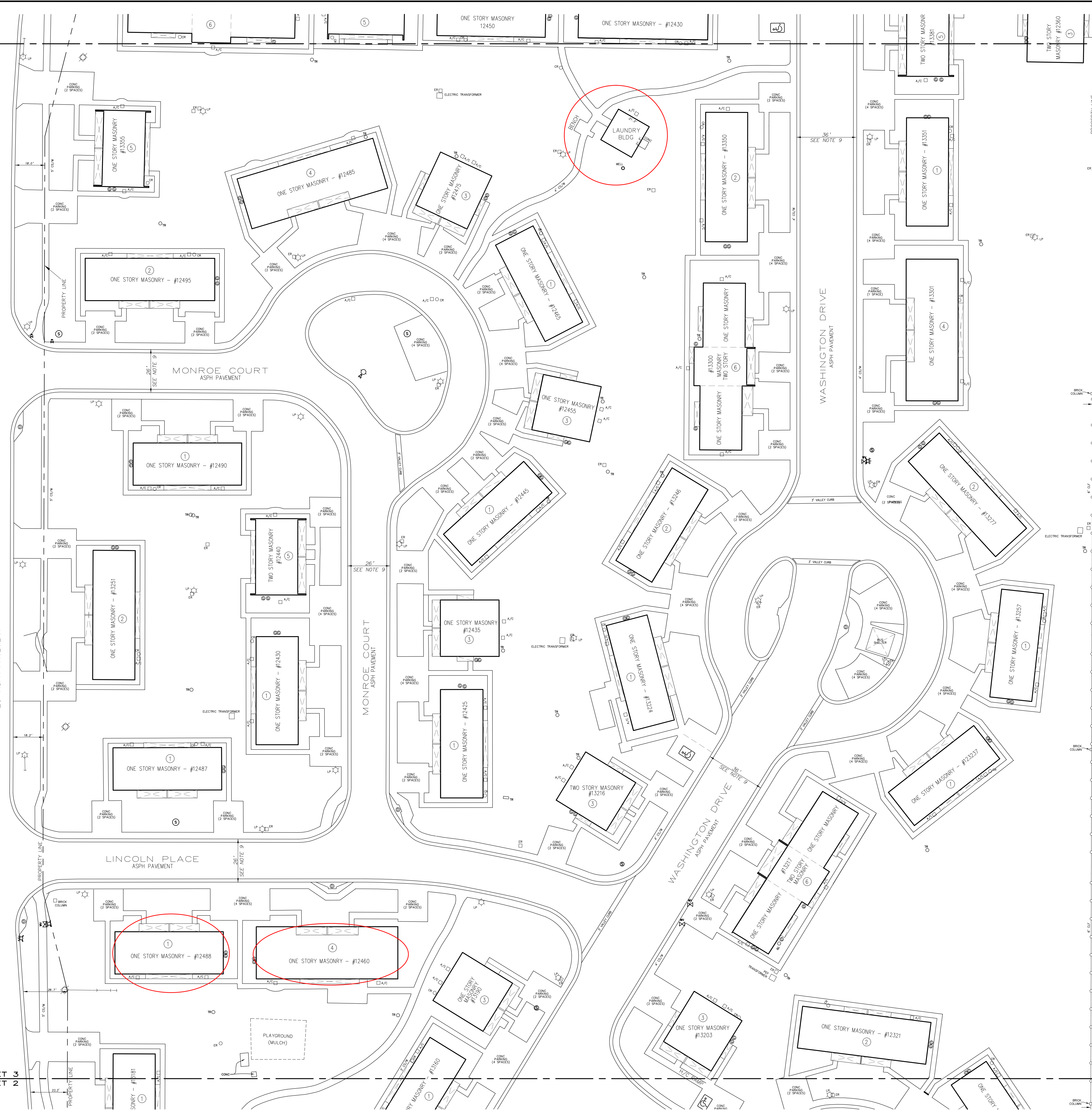
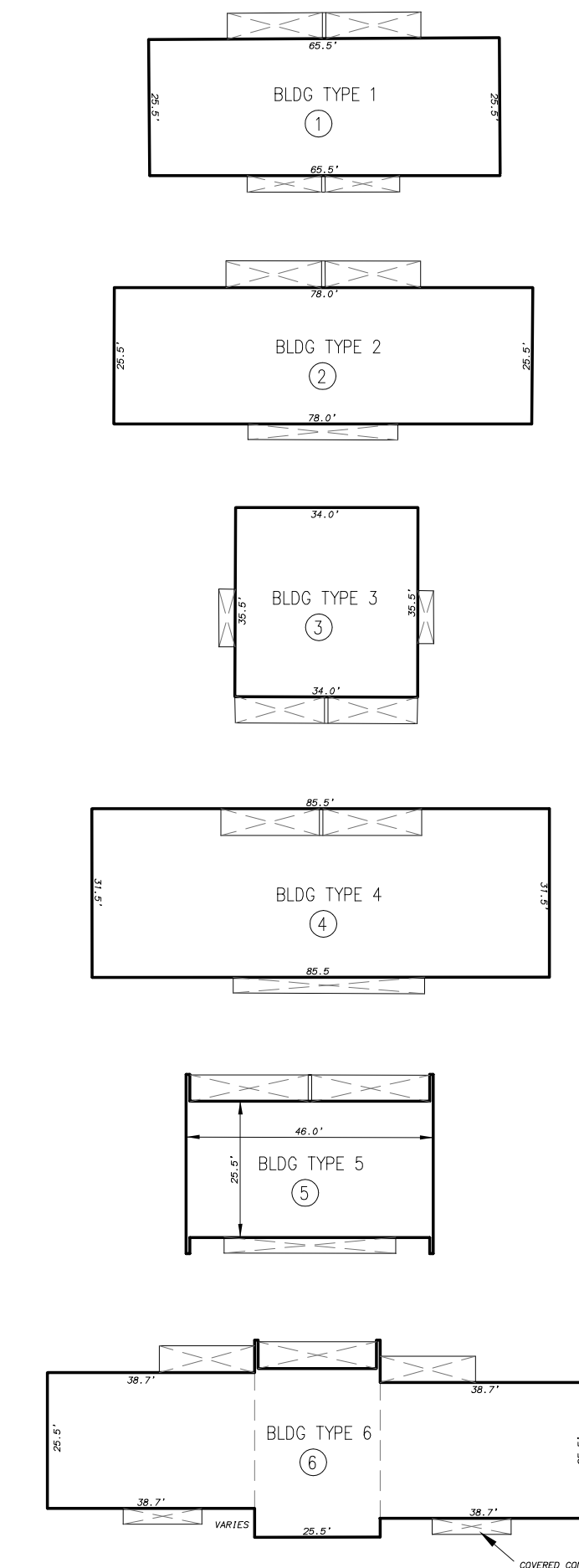
SECTION 4 & 9, TOWNSHIP 30 SOUTH, RANGE 15 EAST
PINELLAS COUNTY, FLORIDA



LEGEND:

- A/C AIR CONDITIONER ON CONCRETE PAD
- BLDG BUILDING
- CLF CHAIN LINK FENCE
- CONC CONCRETE
- CR CABLE TELEVISION RISER
- CS/W CONCRETE SIDEWALK
- ER ELECTRIC POWER RISER
- GL GROUND LIGHT
- GM GAS METER
- LP LIGHT POLE
- PP POWER POLE
- S/W SIDEWALK
- TR TELEPHONE RISER
- WM WATER METER
- WATER VALVE
- FIRE HYDRANT
- DRAINAGE MANHOLE
- SANITARY SEWER MANHOLE
- GAS VALVE/METER
- GUY ANCHOR
- UTILITY POLE

TYPICAL BUILDING DIMENSIONS



MATCHLINE - SHEET 3
MATCHLINE - SHEET 2

**BOUNDARY SURVEY
RAINBOW VILLAGE
for: PINELLAS COUNTY HOUSING AUTHORITY**

HARRY W. MARLOW, INC.
LAND SURVEYORS
CERTIFICATE OF AUTHORIZATION NO. 18938

<p>HOME OFFICE 3941 68TH AVENUE NORTH PINELLAS PARK, FLORIDA 33781 (727) 525-6945 - FAX 522-1403</p>	<p>OCALA OFFICE 2525 N.E. 36TH AVENUE OCALA, FLORIDA 34470 (352) 867-5533 - FAX 867-8544</p>	<p>DATE: 1994 REVISIONS: [] CLIENT: Pinellas Co. Housing SCALE: 1"=100' WORK ORDER: 10050 F.B.</p>
<p>DATE: [] REMARKS: []</p>	<p>DATE: 09/05/10 DRAWN BY: FTW CHECKED BY: []</p>	<p>DRAWING NO. M-7730 SURVEY SHEET NO. 3 of 5</p>