

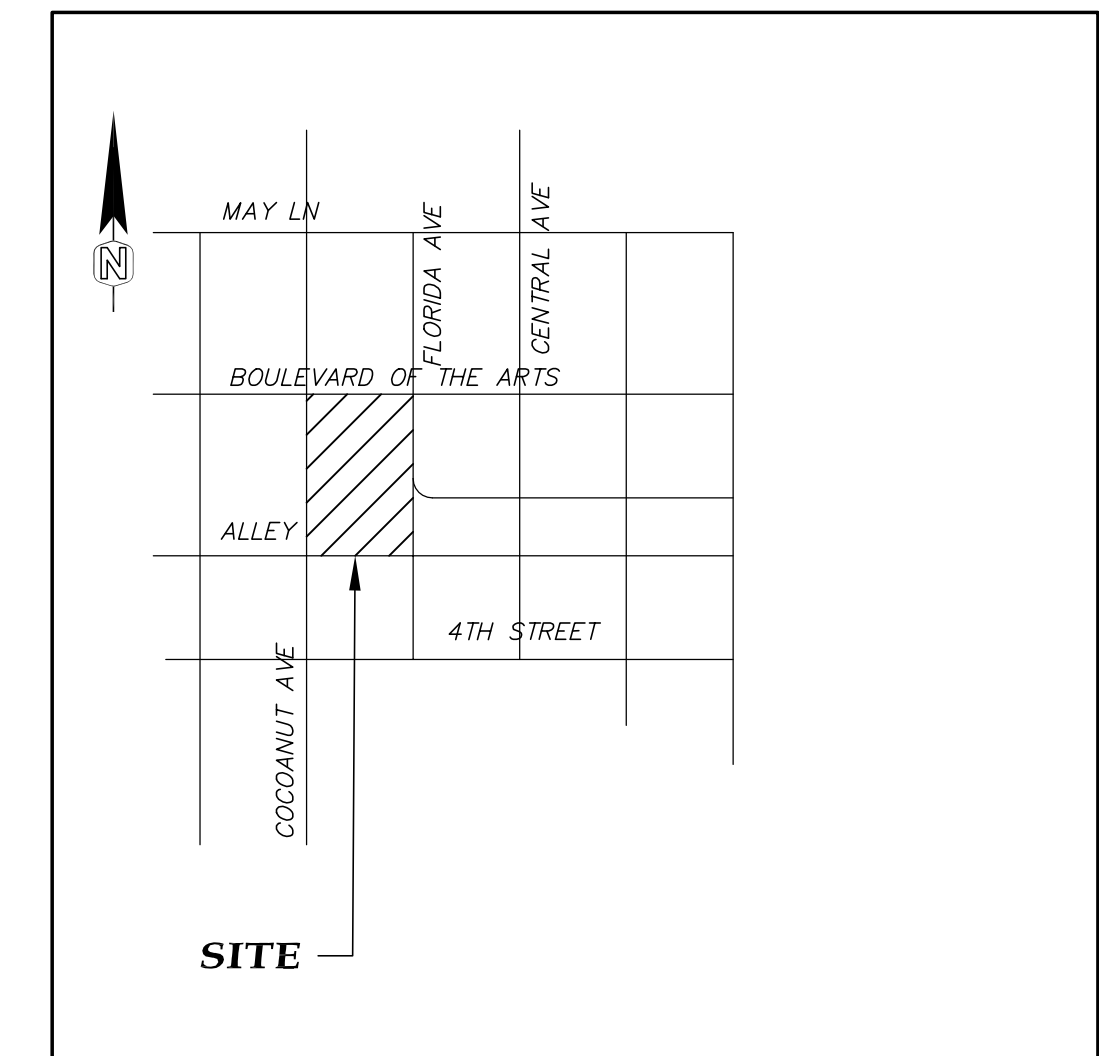
SITE IMPROVEMENT PLAN FOR SARASOTA HOUSING AUTHORITY

**1300 BOULEVARD OF THE ARTS
SARASOTA, FLORIDA 34234**

LEGEND

SYMBOL	DESCRIPTION
B	BITUMINOUS PAVEMENT. SEE ASPHALT PAVEMENT DETAIL.
BD	CONSTRUCT BOLLARD 12" FROM GREASE TRAP. SEE DETAIL.
BE	CONSTRUCT PARKING SIGN. SEE DETAIL.
BM	BENCH MARK - SEE SURVEY PLAN.
CC	4000 P.S.I. CONCRETE CURBING (MIN. 6" ABOVE FINISHED GRADE UNLESS OTHERWISE NOTED) MEETING REQUIREMENTS OF ALL AUTHORITIES. PROVIDE EXPANSION JOINTS AT 20'-0" MAXIMUM. SEE TYPE VERTICAL CURB DETAIL AND SPECIFICATION.
CO	CLEAN OUT SHALL BE CONSTRUCTED EVERY 50'. SEE DETAIL.
CR	CURB TERMINUS. SEE DETAIL.
CS	CONSTRUCT "VISITOR PARKING" PAVEMENT SIGN WITH 10" HIGH LETTERS WITH PAINTING SPECIFICATIONS AS INDICATED WITH SYMBOL PAS BELOW IN LEGEND.
EJ	EXPANSION JOINT. SEE DETAIL.
GBL	GRADE BREAK LINE.
GR	CONSTRUCT GRAVEL FILLED BAGS FOR SILT SEDIMENT CONTROL AS REQUIRED.
GT	CONSTRUCT SCHIER GB-75 GREASE TRAP WITH AK1 ANCHOR KIT AND C24UP COVER. INSTALLATION SHALL BE ACCORDING TO MANUFACTURE GUIDE LINES W/ 5'X5'- 8" THICK 4000 PSI CONCRETE TOP W/6x6-W2.0xW2.0 WELDED WIRE MESH SET 2" BELOW TOP AND 4-#4BARS PLACED AROUND ACCESS LID SET 3" BELOW TOP AND 2" CLEAR ON ALL SIDES.
HC	CONSTRUCT 2" WIDE HANDICAP DETECTABLE WARNING SURFACE PER ADA REQUIREMENTS FULL WIDTH OF WALKWAY PER FDOT INDEX 304.
HCS	CONSTRUCT HANDICAP SIGN PER ADA REQUIREMENTS.
MP	MOTORCYCLE AND MOPED PARKING.
MOT	MAINTENANCE OF TRAFFIC- REFER TO FDOT INDEXES 616, 628, 660 AND RELATED INDEXES. IN ADDITION CONTRACTOR SHALL NOTE CITY OF SARASOTA REQUIREMENTS.
MG	CONTRACTOR SHALL MATCH PROPOSED GRADE TO EXISTING GRADE WITH SMOOTH TRANSITION AT 4 HORIZ.: 1 VERT. SLOPE IN UNPAVED AREAS UNLESS OTHERWISE NOTED.
P	CONSTRUCT 6" DIA. SCH. 40 PVC @1.0% WITH CLEANOUTS AS INDICATED ON PLAN. CONTRACTOR SHALL GROUT ALL JOINTS AT INLET TIE-IN POINTS WITH NON SHRINK GROUT FOR TIGHT SEAL. THIS ITEM SHALL INCLUDE ALL COSTS FOR MATERIALS, BENDS, CONFLICT RESOLUTION, APPURTENANCES AND LABOR FOR CONSTRUCTION.
PAS	TYPICAL PARKING SPACE 6" WIDE WHITE PAINT STRIPE (10 MILS THICK MIN.). ALL MARKINGS SHALL MEET THE RETROREFLECTIVITY REQUIREMENTS OF THE LATEST EDITION OF THE FDOT STANDARD SPECIFICATIONS FOR ROAD AND BRIDGE CONSTRUCTION.
R11	CONSTRUCT STOP SIGN R1-1 AND SUPPORT TO SPECIFICATIONS PER FDOT STANDARDS.
RB	RELOCATE BENCH AS PER OWNER'S DIRECTION.
RC4	4" THICK 4000 P.S.I. CONCRETE, UNLESS NOTE ELSE WHERE ON THESE PLANS OR ON ARCHITECT'S PLANS, REINFORCED WITH 1 LAYER OF 6x6-W2.0xW2.0 WELDED WIRE MESH SET 2" BELOW TOP. SUBGRADE UNDER SIDEWALKS SHALL BE COMPACTED TO 98% AASHTO T-180.
RC6	6" THICK 4000 P.S.I. CONCRETE, UNLESS NOTE ELSE WHERE ON THESE PLANS OR ON ARCHITECT'S PLANS, REINFORCED WITH 1 LAYER OF 6x6-W2.0xW2.0 WELDED WIRE MESH SET 2" BELOW TOP. SUBGRADE UNDER SIDEWALKS SHALL BE COMPACTED TO 98% AASHTO T-180.
RR	CONSTRUCT SAW CUTS, PAVEMENT, ROCK, CONCRETE, SOD, SHRUB AND TREE REMOVAL AS REQUIRED FOR WORK. ALL MATERIAL SHALL BE DISPOSED OF OFF SITE IN AN APPROVED AREA. SITE AREA SHALL BE CLEARED OF ALL ORGANIC SOILS AND MATERIALS AND MECHANICALLY ROOT RACKED TO A DEPTH OF 18" BELOW EXISTING GRADE TO REMOVE ALL ROOTS. DEMO MAY EXTEND OUTSIDE OF AREA SHOW TO ACCOMMODATE CONSTRUCTION.
SC	SEALCOAT: CONTRACTOR SHALL CLEAN PAVEMENT SURFACE OF ALL LOOSE DUST, DIRT, LEAVES AND ANY FOREIGN MATERIALS IN ACCORDANCE WITH MANUFACTURE'S SPECIFICATIONS. CONTRACTOR SHALL CONSTRUCT POLYUR, FROM GEMSEAL, HEAVY DUTY PAVEMENT SEAL AND APPLY PER THE MANUFACTURE'S RECOMMENDATIONS. CONTRACTOR SHALL ADD 3-5 POUNDS OF SAND TO THE SEALCOAT AS DESCRIBED IN THE MANUFACTURE'S APPLICATION INSTRUCTIONS FOR SKID RESISTANCE. CONTRACTOR SHALL APPLY THREE COATS IN THE DRIVE ISLES AND TWO COATS IN THE PARKING STALLS AND APPLIED AS 0.1-0.15 GAL/SQ.YD. FOR THE FIRST COAT AND 0.10-0.12 FOR THE SECOND AND THIRD COATS. AFTER CURING TIME CONTRACTOR SHALL CONSTRUCT PAINT STRIPING. LIMITS OF SEALCOAT SHALL BE ASPHALT AREAS WITHIN THE PROPERTY.
SCR	SILT SCREEN SHALL BE LOCATED ON PROPERTY LINE UNLESS OTHERWISE SHOWN. SEE DETAIL.
SG	SIDEWALK GRADE.
SN1	CONSTRUCT YARD DRAIN WITH REMOVAL BE METAL WATER TIGHT COVER WITH HANDLE OVER GRATE. SEE DETAIL.
SOD	SOD AREA: TOPSOIL, LIME, FERTILIZER AND SOD W/ BAHIA IN ALL AREAS DISTURBED BY CONSTRUCTION.
SW	CONSTRUCT SIDEWALK WITH SAW CUT EVERY 5' UNLESS OTHERWISE NOTED.
SWC	SAW CUT.
TEE	DOWN TURNED 6"x6" ADS N12 TEE.
TF	TOE FOOTING- SEE DETAIL.
UD	CONSTRUCT 2-20' 6" DIA PERFORATED ADS N12 PIPE @ 0.50% W/ WASHED #57 STONE, LIGHTLY COMPACTED, TO INCLUDE ALL END CAPS, BENDS, CONNECTION TO PVC TEES AND APPURTENANCES. MATERIALS AND LABOR REQUIRED TO CONSTRUCT UNDERDRAIN SYSTEM AND CONNECTION TO P1 FOR EACH PIPE. SEE DETAIL.
WL	EX. WATER LINE TO REMAIN.
	FLOW DIRECTIONAL INTENT.
	EXISTING FEATURES.
	EXISTING ITEMS TO BE REMOVED.
	PLAN CHANGES.

LOCATION MAP



NOT TO SCALE

SITE DATA

SARASOTA COUNTY TAX ID NO: 2026120011

OWNER/ APPLICANT:
SARASOTA HOUSING AUTHORITY
269 S. OSPREY AVENUE, SUITE 100
SARASOTA, FLORIDA 34236
(941) 361-6210

ENGINEER:
W. R. COOK ENGINEERING, LLC
3012 RIVERVIEW BLVD.
BRADENTON, FL 34205
PH. (941) 224-4839
E-MAIL : WRCOOKJR@VERIZON.NET

SURVEYOR:
OMC SURVEYING AND MAPPING
518 15TH ST. W.
BRADENTON, FLORIDA 34205
(941) 345-5451

UTILITY COMPANIES AND FIRE DEPARTMENTS:

WATER: CITY OF SARASOTA
1750 12TH ST.
SARASOTA, FLORIDA 34236
PHONE NO.: 941-365-2200

POWER: FPL
1651 WHITFIELD AVE
SARASOTA, FL 34243

TELEPHONE: FRONTIER
5631 26TH ST. WEST
BRADENTON, FL 34207

FIRE DEPT: SARASOTA COUNTY
PH: 941-861-5000

TECO PEOPLES
GAS: (813) 275-3700

NOTE:

SEALCOAT. IT IS NOT THE ENGINEER'S RECOMMENDATION FOR PLACING A SEALCOAT ON THE PARKING AREA. THIS ITEM IS BEING ADDED AT THE REQUEST OF THE OWNER AND THE ENGINEER DOES NOT TAKE RESPONSIBILITY FOR IT. MANUFACTURE'S WARNING- SKID RESISTANCE: SEALCOAT, WHEN IMPROPERLY APPLIED AND/OR UNDER CERTAIN ENVIRONMENTAL CONDITIONS, MAY BECOME SLIPPERY.



WRCook Engineering, LLC

3012 RIVERVIEW BLVD., BRADENTON, FL 34205
PHONE: (941) 224-4839
E-MAIL ADDRESS: reed@wrcookeengineering.com
CERTIFICATE OF AUTHORIZATION 26028

INDEX OF DRAWINGS

- 1 TITLE SHEET
- 2 DEMO PLAN
- 3 SITE PLAN
- 4 ENLARGEMENT PLAN
- 5 JOINT PLAN
- 6 DETAILS
- 7 GENERAL NOTES

NO.	DATE	REVISIONS
7.		
6.		
5.		
4.		
3.	8/23/18	ADDED R-11 TO LEGEND.
2.		OWNER'S REQUEST W/ MISCELLANEOUS ITEMS.
1.	7/26/18	CHANGED SEALCOAT NOTE IN LEGEND PER

SIGNED: _____

WILLIAM R. COOK, JR., STATE OF FLORIDA,
PROFESSIONAL ENGINEER, LICENSE NO.
34806
THIS ITEM HAS BEEN DIGITALLY SIGNED AND
SEALED BY WILLIAM R. COOK, P. E. ON
8/24/18.
PRINTED COPIES OF THIS DOCUMENT ARE
NOT CONSIDERED SIGNED AND SEALED AND
THE SIGNATURE MUST BE VERIFIED ON ANY
ELECTRONIC COPIES.

WILLIAM R. COOK, JR., P.E.
REGISTRATION NO. 34806

DATE: _____

JOB NO:

SHA

SHEET

1