

**GENERAL NOTES**

1. THE GENERAL NOTES LISTED HERE APPLY TO ALL PLUMBING DRAWINGS IN ADDITION TO ANY ADDITIONAL DRAWING NOTES ON THE INDIVIDUAL DRAWINGS.
2. SEE PLAN NOTES ON INDIVIDUAL DRAWING SHEETS FOR SPECIFIC INSTRUCTIONAL NOTES.
3. FIELD VERIFY EXISTING CONDITIONS PRIOR TO THE START OF CONSTRUCTION.
4. THE PLUMBING CONTRACTOR IS RESPONSIBLE FOR DETERMINING THE EXACT LOCATION AND ELEVATION OF ALL EXISTING UNDERGROUND UTILITIES PRIOR TO COMMENCING WORK. THE PLUMBING CONTRACTOR IS RESPONSIBLE FOR ANY DAMAGES WHICH OCCURS BY HIS FAILURE TO LOCATE OR PRESERVE THE UNDERGROUND CONDITIONS.
5. IF DURING CONSTRUCTION OPERATIONS, THE PLUMBING CONTRACTOR ENCOUNTERS UTILITIES OTHER THAN THOSE LOCATIONS SHOW IN THE PLANS, HE SHALL IMMEDIATELY NOTIFY ENGINEER AND TAKE THE NECESSARY STEPS TO PROTECT THE FACILITY AND ASSURE THE CONTINUANCE OF SERVICE.
6. COORDINATE WITH GENERAL TRADES WORK AND OTHER WORK.
7. THE PLUMBING DESIGN DRAWINGS ARE DIAGRAMMATIC AND ARE NOT INTENDED TO SHOW EXACT LOCATION OF EQUIPMENT AND PIPING UNLESS DIMENSIONS ARE GIVEN OR OTHERWISE IMPLIED FOR CLEARANCES, ETC. PIPING AND PLUMBING EQUIPMENT ARE TO BE INSTALLED ALONG THE GENERAL PLANS SHOWN ON THE DRAWINGS, BUT KEEPING IN MIND ACTUAL BUILDING CONDITIONS WHICH MUST BE CONFORMED WITHIN THE ACTUAL WORK. CONTRACTORS IN THEIR BIDS ARE REQUIRED TO INCLUDE ALL LABOR AND MATERIALS AND OTHER RELATED WORK NECESSARY TO PROVIDE MINOR OFFSETS IN PLUMBING WORK AS REQUIRED TO AVOID CONFLICT WITH OTHER WORK ON THIS PROJECT OR AS REQUIRED IN ORDER TO OBTAIN MAXIMUM HEAD ROOM OR EQUIPMENT ACCESS IN SPACES.
8. THE PLUMBING CONTRACTOR IS TO COORDINATE ALL PIPING WITH OTHER TRADES PRIOR TO ROUTING PIPING AND SHALL MAKE OFFSETS AND ADJUST PIPE ROUTING AS REQUIRED TO HANDLE CONFLICTS IN THE FIELD. THE PLUMBING CONTRACTORS SHALL ALSO BE REQUIRED TO OFFSET VERTICAL SANITARY AND VENT LINES AROUND STRUCTURAL MEMBERS AS REQUIRED AND SHALL INCLUDE IN THEIR BID THE ASSOCIATED COST FOR ADDITIONAL FITTINGS, PIPING, AND MAN HOURS TO ACCOMMODATE CONFLICTS.
9. SEE ARCHITECTURAL DRAWINGS FOR LOCATION AND ELEVATION OF PLUMBING FIXTURES.
10. P.C. TO FURNISH WALL FLANGES AROUND ALL PIPING EXPOSED BELOW CEILING AND CASEWORK.
11. ACCESS PANELS ARE TO BE FURNISHED BY THE PLUMBING CONTRACTOR AND INSTALLED BY THE GENERAL CONTRACTOR. THE PLUMBING CONTRACTOR IS TO COORDINATE LOCATION AND INSTALLATION OF VALVES, SHOCK STOPS, AND CLEANOUTS ABOVE ACCESS PANEL WITH G.C. TO MINIMIZE SIZE OF PANELS.
12. EQUIPMENT CONNECTION ARRANGEMENTS, FLANGES, UNIONS, VALVING, ETC. ARE NOT TYPICALLY SHOWN ON PLAN VIEWS. REFER TO DETAILS FOR REQUIREMENTS. INSTALL ALL VALVES AND OTHER ITEMS REQUIRING OR FACILITATING MAINTENANCE IN ACCESSIBLE LOCATIONS, AND SO AS TO NOT OBSTRUCT MAINTENANCE ON EQUIPMENT SERVED.
13. PROVIDE AND INSTALL SHUT-OFF ISOLATION VALVES AT EACH TIE-IN LOCATION.

**PLAN KEYNOTES**

1. REMOVE EXISTING BATHTUB ALONG WITH TUB SURROUND. DISCONNECT EXISTING SANITARY, VENT AND DOMESTIC HOT AND COLD WATER PIPING FOR RECONNECTION UNDER NEW WORK.
2. REMOVE EXISTING BATHTUB ALONG WITH TUB SURROUND. DISCONNECT EXISTING SANITARY, VENT AND DOMESTIC HOT AND COLD WATER PIPING. REMOVE ALL VENT, DOMESTIC HOT AND COLD WATER PIPING FROM WET WALL.
3. REMOVE EXISTING LAVATORY. DISCONNECT DOMESTIC HOT AND COLD WATER, SANITARY AND VENT PIPING FOR EXTENSION UNDER NEW WORK.
4. REMOVE EXISTING WATER CLOSET. DISCONNECT DOMESTIC COLD WATER, SANITARY AND VENT PIPING FOR EXTENSION UNDER NEW WORK. CLEAN AND PROTECT EXISTING WATER CLOSET FOR RE-INSTALLATION UNDER NEW WORK.
5. PROVIDE AND INSTALL NEW BATHTUB ALONG WITH NEW TUB SURROUND. EXTEND NEW 2" SANITARY, 1-1/2" VENT AND 1/2" DOMESTIC HOT AND COLD WATER PIPING FROM EXISTING PIPING. PROVIDE NEW SHUT-OFF VALVES. FIELD VERIFY EXACT PIPE LOCATION.
6. PROVIDE AND INSTALL NEW BATHTUB ALONG WITH NEW TUB SURROUND. INSTALL WALK-IN CONVERSION KIT INTO NEW BATHTUB PER MANUFACTURER'S RECOMMENDATIONS. EXTEND NEW 2" SANITARY, 1-1/2" VENT AND 1/2" DOMESTIC HOT AND COLD WATER PIPING FROM EXISTING PIPING. PROVIDE NEW SHUT-OFF VALVES. FIELD VERIFY EXACT PIPE LOCATION.
7. PROVIDE AND INSTALL NEW ROLL-IN SHOWER BASE ALONG WITH NEW SURROUND. EXTEND NEW 2" SANITARY, 1-1/2" VENT AND 1/2" DOMESTIC HOT AND COLD WATER PIPING FROM EXISTING PIPING THROUGH NEW WET WALL. FIELD VERIFY EXACT PIPE LOCATION.
8. PROVIDE AND INSTALL NEW WALL MOUNTED LAVATORY. EXTEND NEW 2" SANITARY, 1-1/2" VENT AND 1/2" DOMESTIC HOT AND COLD WATER PIPING TO NEW LAVATORY. CUT AND PATCH WALL TO MATCH EXISTING AS REQUIRED FOR THE INSTALLATION OF THE NEW PIPING. FIELD VERIFY EXACT PIPE LOCATION.
9. INSTALL EXISTING WATER CLOSET IN THE LOCATION INDICATED PER ACCESSIBLE REQUIREMENTS. EXTEND NEW 4" SANITARY, 2" VENT AND 1/2" DOMESTIC COLD WATER PIPING TO WATER CLOSET. CUT AND PATCH WALL AND FLOOR TO MATCH EXISTING AS REQUIRED FOR THE INSTALLATION OF THE NEW PIPING. FIELD VERIFY EXACT PIPE LOCATION.

SYMBOL	MFG.	MODEL	DESCRIPTION	CONNECTIONS			
				CW	HW	WASTE	VENT
SH-1	AQUATIC	16030BFSC	60"x30" WHITE MOLDED ADA ROLL-IN SHOWER BASE WITH SLIP RESISTANT SURFACE WITH WHITE FIBERGLASS 3-PIECE SHOWER SURROUND. CONTRACTOR TO FIELD VERIFY DIMENSIONS OF BATHROOM FOR VERIFICATION OF SURROUND SIZE. PROVIDE WITH PRESSURE-BALANCING MIXING VALVE AND MOEN MODEL# 8346EP15 SHOWER FIXTURE WITH SINGLE HANDLE, SHOWER VALVE AND HAND-HELD SHOWER, 1.5 GPM MAX FLOW SHOWER HEAD.	1/2"	1/2"	2"	1-1/2"
BT-1	AMERICAN STANDARD	2390.202	60"x30"x14" WHITE STEEL BATH TUB WITH PORCELAIN SLIP RESISTANT SURFACE AND CONTOURED FRONT APRON. VERIFY LEFT/RIGHT HAND DRAIN. PROVIDE SWANSTONE MODEL# SS-60-3, 60"x30"x60" BERMUDA SAND SOLID SURFACE 3-PIECE TUB/SHOWER SURROUND. CONTRACTOR TO FIELD VERIFY DIMENSIONS OF BATHROOM FOR VERIFICATION OF SURROUND SIZE. PROVIDE WITH PRESSURE-BALANCING MIXING VALVE AND MOEN MODEL # 82603 TUB/SHOWER FIXTURE WITH SINGLE HANDLE, TUB SPOUT, 1.75 GPM MAX FLOW SHOWER HEAD.	1/2"	1/2"	2"	1-1/2"
BT-2	AMERICAN STANDARD WITH SAFE STEP	2390.202	60"x30"x14" WHITE STEEL BATH TUB WITH PORCELAIN SLIP RESISTANT SURFACE AND CONTOURED FRONT APRON AND SAFE STEP WALK IN CONVERSION KIT. VERIFY LEFT/RIGHT HAND DRAIN. PROVIDE SWANSTONE MODEL# SS-60-3, 60"x30"x60" BERMUDA SAND SOLID SURFACE 3-PIECE TUB/SHOWER SURROUND. CONTRACTOR TO FIELD VERIFY DIMENSIONS OF BATHROOM FOR VERIFICATION OF SURROUND SIZE. PROVIDE WITH PRESSURE-BALANCING MIXING VALVE AND MOEN MODEL # 82603 TUB/SHOWER FIXTURE WITH SINGLE HANDLE, TUB SPOUT, 1.75 GPM MAX FLOW SHOWER HEAD.	1/2"	1/2"	2"	1-1/2"
LAV-1	AMERICAN STANDARD	0124.131	"COMRADE" WALL HUNG VITREOUS CHINA LAVATORY, 20"x18" WITH FRONT OVERFLOW, "MONTERREY" CENTERSET LEVER HANDLES ADA COMPLIANT FAUCET MODEL 8800F05 WITH FLOW RESTRICTOR. MOUNT TO BE ACCESSIBLE COMPLIANT. PROVIDE WITH OFFSET DRAIN, INSULATION KIT, AND CONCEALED ARM CARRIER. PROVIDE CHROME FINISH ASSE 1070 LISTED UNDER-SINK THERMOSTATIC MIXING VALVE SET AT 105°F.	1/2"	1/2"	2"	1-1/2"

REV.	DATE	DESCRIPTION
1	03/13/2019	ADDENDUM #1
2	01/04/2019	ISSUED FOR PERMIT
3	12/21/2018	ISSUED FOR BID

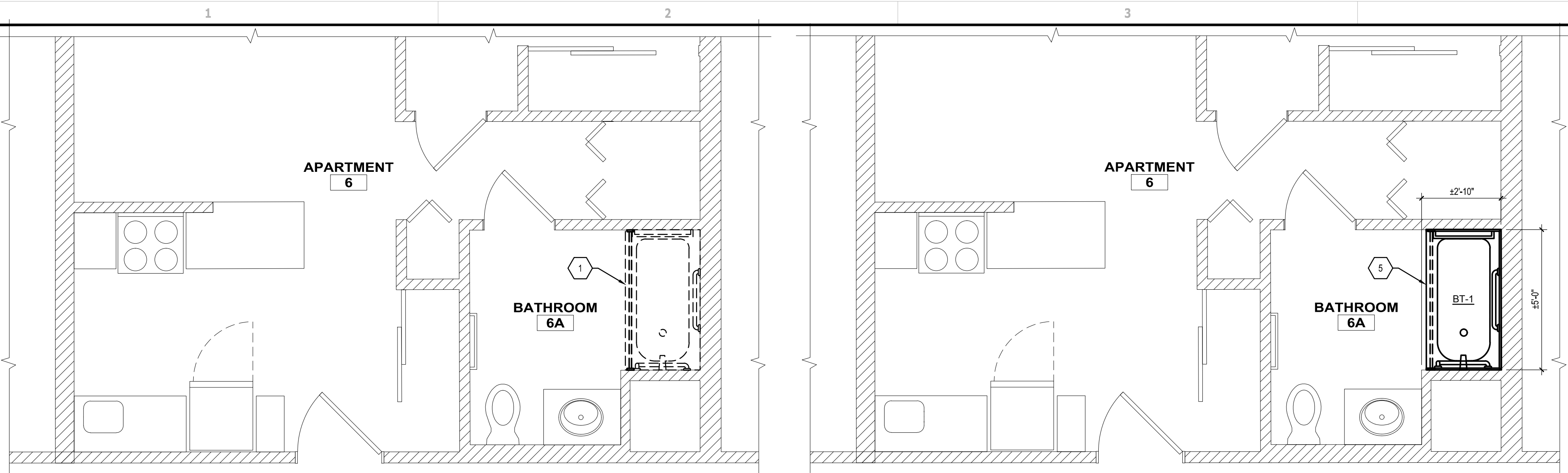
**MURRAY MANOR BATHROOM RENOVATIONS**  
 GEauga METROPOLITAN HOUSING AUTHORITY  
 385 CENTER ST., CHARDON, OH 44042

ISSUED FOR:	
PERMIT	01/04/2019
BID	12/21/2018
CONSTRUCTION	-
RECORD	-

PROJECT MANAGER	DESIGNER
RD	KJC

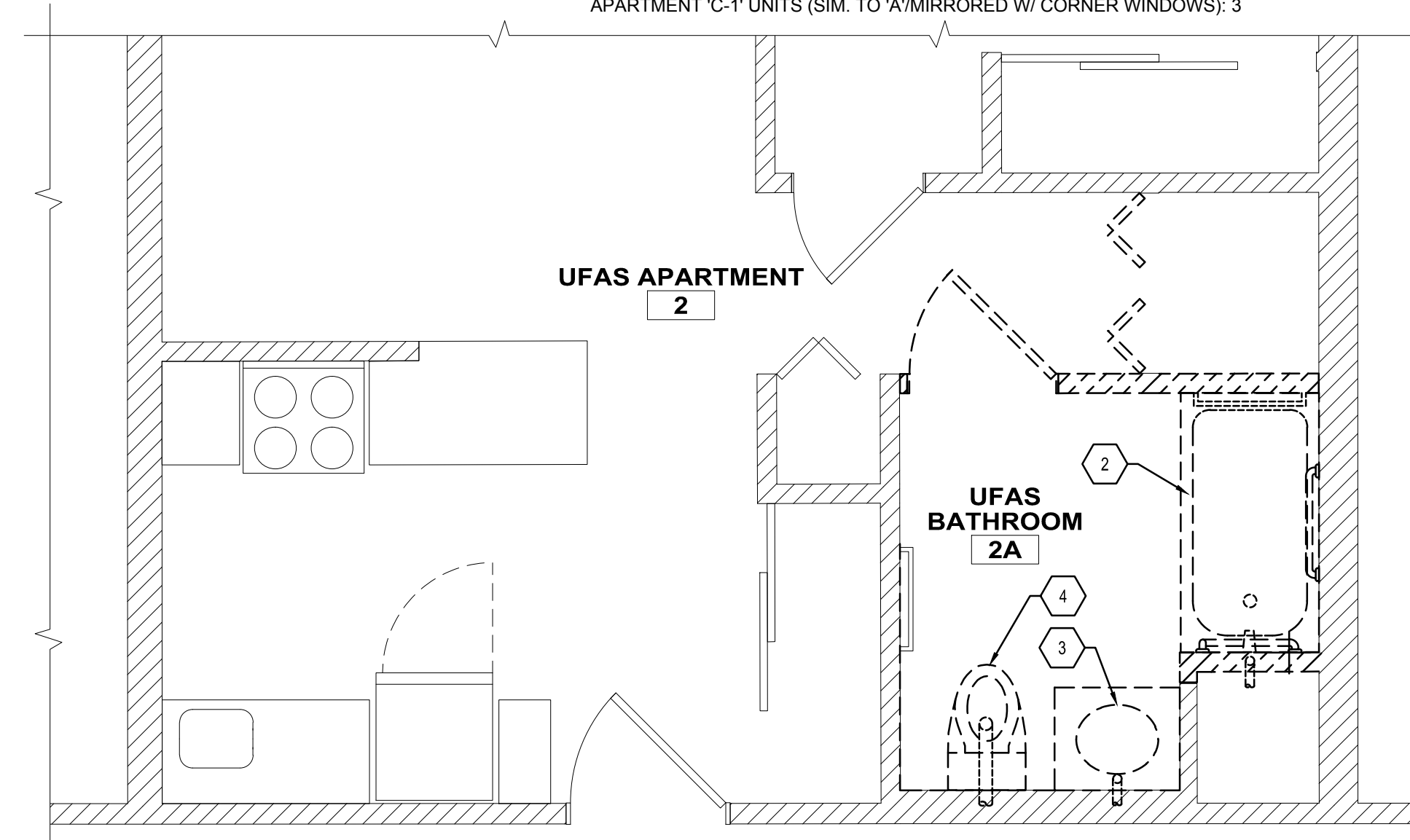
JOB NO.  
**2018359.01**

**P-101**



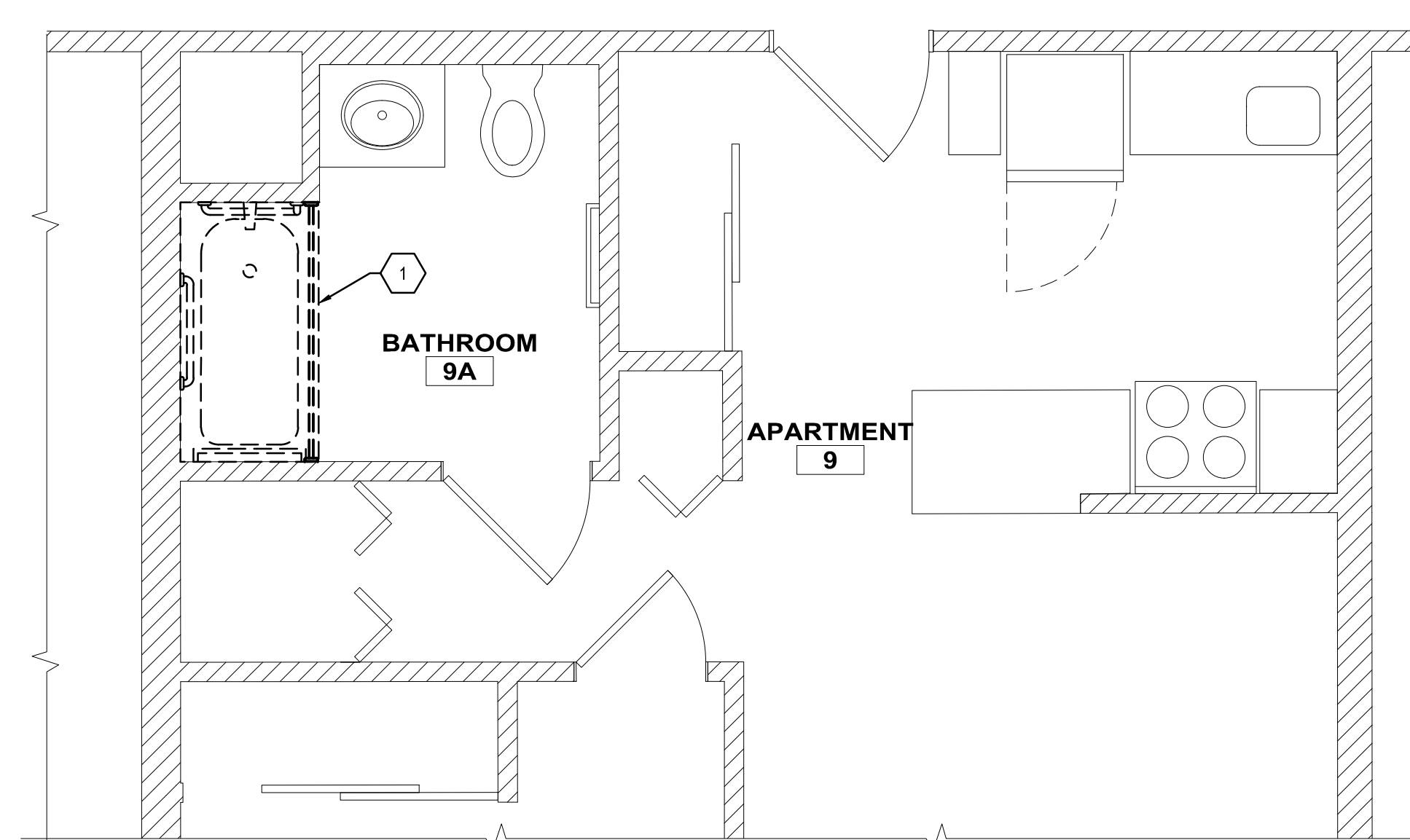
**C1 ENLARGED DEMOLITION PLAN -STANDARD APT. TYPE 'A'**  
 3/8"=1'-0"  
 APARTMENT 'A' UNITS (APT 6 SHOWN): 29  
 APARTMENT 'A'-1' UNITS (SIM./MIRRORED): 27  
 APARTMENT 'C' UNITS (SIM. TO 'A' UNITS W/ CORNER WINDOWS): 4  
 APARTMENT 'C'-1' UNITS (SIM. TO 'A'/MIRRORED W/ CORNER WINDOWS): 3

**C3 ENLARGED FLOOR PLAN -STANDARD APT. TYPE 'A'**  
 3/8"=1'-0"  
 APARTMENT 'A' UNITS (APT 6 SHOWN): 29  
 APARTMENT 'A'-1' UNITS (SIM./MIRRORED): 27  
 APARTMENT 'C' UNITS (SIM. TO 'A' UNITS W/ CORNER WINDOWS): 4  
 APARTMENT 'C'-1' UNITS (SIM. TO 'A'/MIRRORED W/ CORNER WINDOWS): 3



**B1 ENLARGED DEMOLITION PLAN -ACCESSIBLE APT. TYPE 'B'**  
 3/8"=1'-0"  
 UFAS APARTMENT 'B' UNITS (APT 2 SHOWN): 4  
 UFAS APARTMENT 'B'-1' UNITS (SIM./MIRRORED): 4

**B3 ENLARGED FLOOR PLAN -ACCESSIBLE APT. TYPE 'B'**  
 3/8"=1'-0"  
 UFAS APARTMENT 'B' UNITS (APT 2 SHOWN): 4  
 UFAS APARTMENT 'B'-1' UNITS (SIM./MIRRORED): 4



**A1 ENLARGED DEMOLITION PLAN -ADAPTABLE ACCESSIBLE APT. TYPE 'AB'**  
 3/8"=1'-0"  
 APARTMENT 'AB' UNITS (APT 9 SHOWN): 3  
 APARTMENT 'AB'-1' UNITS (SIM./MIRRORED): 1

**A3 ENLARGED FLOOR PLAN -ADAPTABLE ACCESSIBLE APT. TYPE 'AB'**  
 3/8"=1'-0"