

**ADDENDUM #3**

May 13, 2019

To the Contract Documents for  
**HARRISBURG HOUSING AUTHORITY**  
**WILLIAM HOWARD DAY HOMES**  
**RENOVATIONS TO BUILDINGS K, L & M**  
Dated March 29, 2019

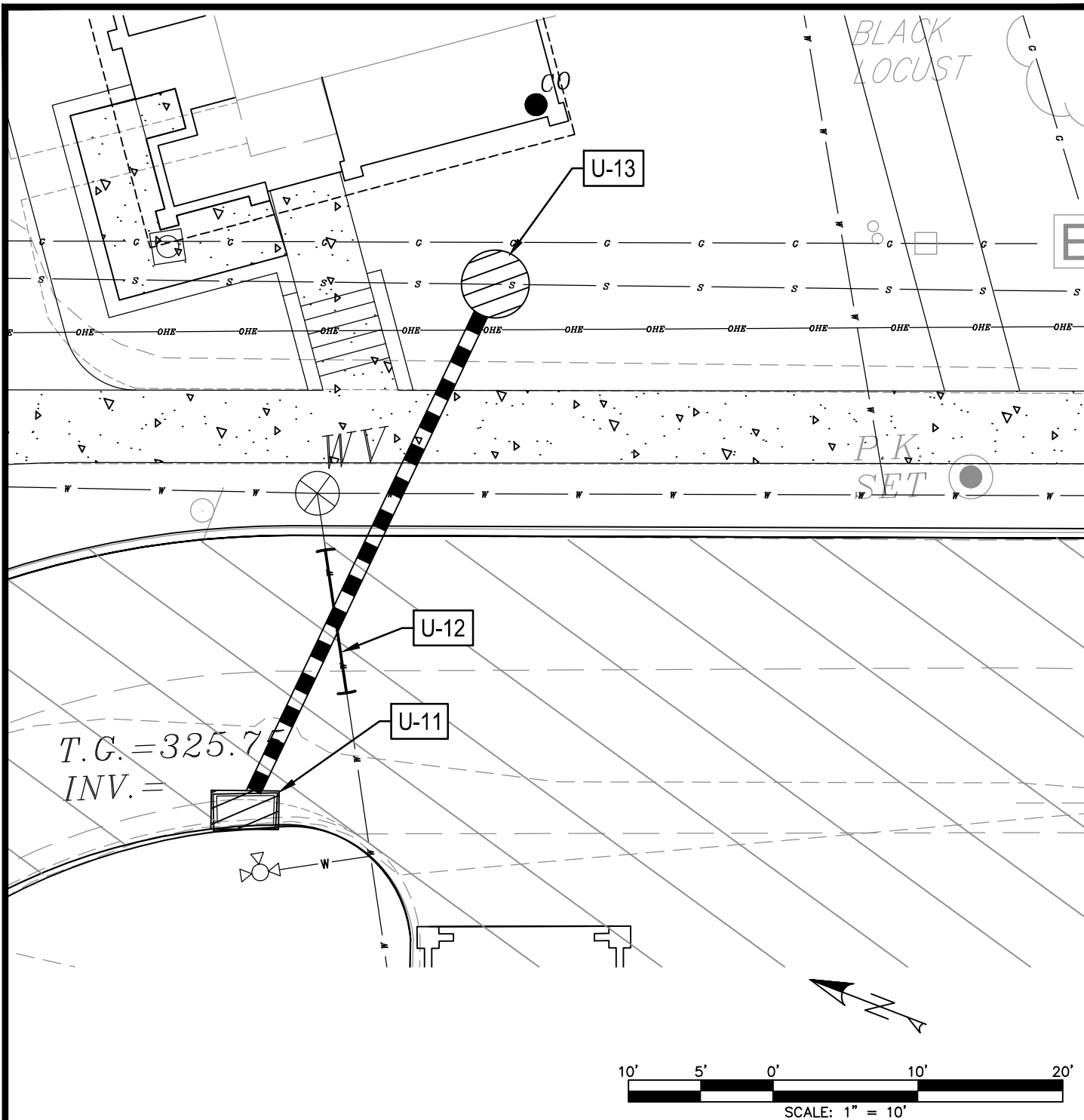
Addendum has been issued via the Housing Agency Marketplace website

**DRAWING ADDENDUM**

- A. Sheet C104: Provide revisions as indicated on attached Sketch sheet CSKS-1.
- B. Sheet C301: Provide revisions as indicated on attached Sketch sheet CSKS-2.
- C. Sheet C502: Provide revisions as indicated on attached Sketch sheet CSKS-3.

Issued by,  
Harrisburg Housing Authority and KD3 Design Studio, Inc

Dwg. Ex. Inset Ebn Plotted by: bkgorise on May 13, 2019 at 2:18pm Layout: SKS-1



- U-11 REPLACE EXISTING INLET WITH TYPE C INLET PER DETAIL 1/C-502
- U-12 RELOCATE EXISTING 6" HYDRANT LINE AS REQUIRED
- U-13 NEW STORM MANHOLE PER CRW DETAIL

**WILLIAM HOWARD DAY HOMES  
RENOVATIONS - BUILDINGS K, L, M**



**NAVARRO & WRIGHT  
CONSULTING ENGINEERS, INC.**

20 S. UNION STREET  
MIDDLETOWN, PA 17057

PHONE: (717) 944-0883  
FAX: (717) 944-0112

DRAWN BY: BKK

DATE: 05-13-2019

CHECKED BY: DPG

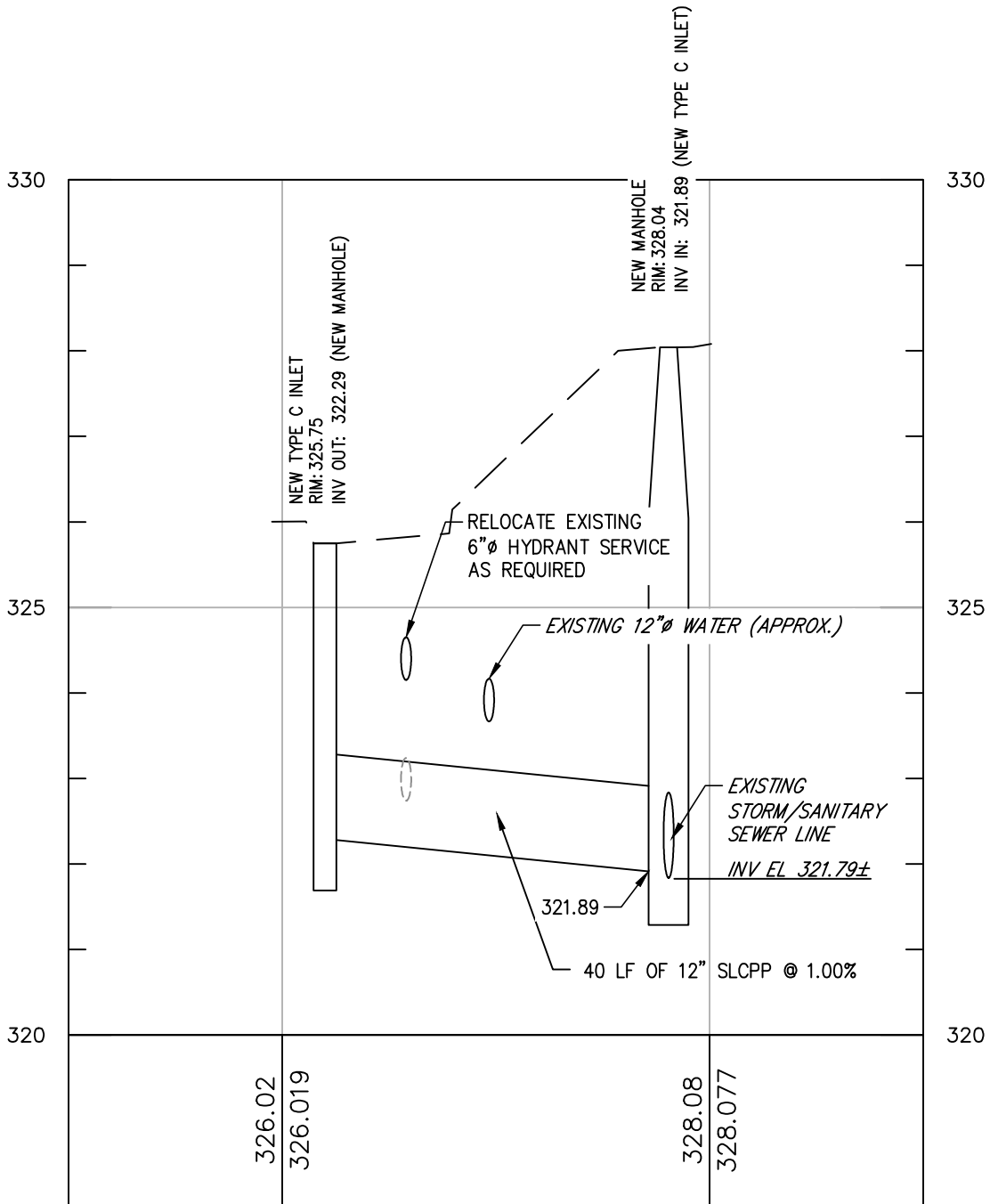
SCALE: 1" = 10'

JOB NUMBER: 1812SC377

**C104 UTILITY PLAN**

SHEET: **CSKS-1**

Dwg: Ex. Inlet Ebn Plotted by: bkogers on May 13, 2019 at 2:18pm Layout: SKS-2



0+00 0+50  
**PROFILE - PROPOSED INLET TO PROPOSED MANHOLE**  
 1" = 20' HORIZ.  
 1" = 2' VERT.

**WILLIAM HOWARD DAY HOMES  
 RENOVATIONS - BUILDINGS K, L, M**



**NAVARRO & WRIGHT  
 CONSULTING ENGINEERS, INC.**

20 S. UNION STREET  
 MIDDLETOWN, PA 17057

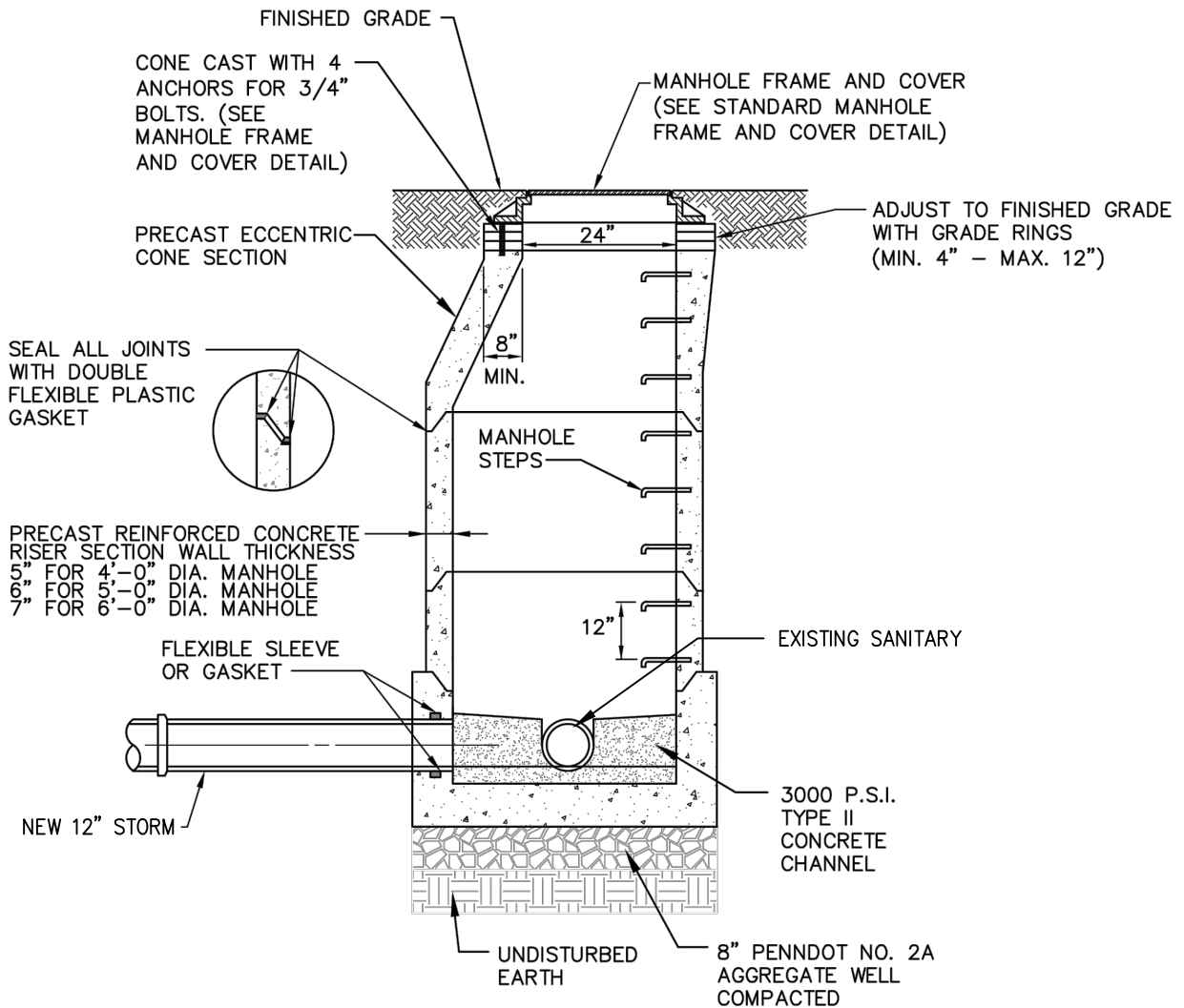
PHONE: (717) 944-0883  
 FAX: (717) 944-0112

DRAWN BY: BKK  
 CHECKED BY: DPG  
 JOB NUMBER: 1812SC377

DATE: 05-13-2019  
 SCALE: AS SHOWN

**C301 PROFILES**

SHEET: **CSKS-2**



**SECTION**

**STANDARD SEWER MANHOLE DETAIL**

NOT TO SCALE

**NOTES:**

1. FOR MANHOLES IN PAVED AREAS, INSTALL FRAME AND COVERS 1/8" BELOW FINAL PAVEMENT GRADE.
2. THE ENTIRE OUTER SURFACE OF THE MANHOLE SHALL BE COATED WITH 2 COATS BITUMASTIC.
3. 100% COMPACTION OF MANHOLE BACKFILL REQUIRED.
4. FLOW CHANNEL BENCH HEIGHT TO MATCH CROWN OF PIPE.

WILLIAM HOWARD DAY HOMES  
RENOVATIONS - BUILDINGS K, L, M



**NAVARRO & WRIGHT**  
**CONSULTING ENGINEERS, INC.**

20 S. UNION STREET  
MIDDLETOWN, PA 17057

PHONE: (717) 944-0883  
FAX: (717) 944-0112

DRAWN BY: BKK  
CHECKED BY: DPG  
JOB NUMBER: 1812SC377

DATE: 05-13-2019  
SCALE: NONE

C502 DETAILS

SHEET: CSKS-3