

- LEGEND**
- |  |                                    |  |                           |
|--|------------------------------------|--|---------------------------|
|  | SET 1/2" REBAR W/CAP (R.L.S. 1203) |  | IRON PIN FOUND            |
|  | REBAR                              |  | NORTHEAST CORNER          |
|  | PROPERTY LINE                      |  | PROPERTY LINE ADJACENT    |
|  | 1' MINOR CONTOUR                   |  | 5' MAJOR CONTOUR          |
|  | UTILITY EASEMENT                   |  | RIGHT OF WAY              |
|  | OVERHEAD ELECTRIC                  |  | BUILDING SETBACK LINE     |
|  | POWER POLE                         |  | OVERHEAD WIRE MISC        |
|  | POLE MOUNTED LIGHT                 |  | POWER POLE W/ TRANSFORMER |
|  | ELECTRICAL BOX                     |  | LANDSCAPE LIGHT           |
|  | WATER LINE                         |  | DIRECTION OF TRAFFIC      |
|  | WATER METER                        |  | WATER VALVE               |
|  | STORM DRAIN PIPE                   |  | FIRE HYDRANT              |
|  | STORM DRAIN MANHOLE                |  | STORM DRAIN SURFACE INLET |
|  | SANITARY SEWER PIPE                |  | REINFORCED CONCRETE PIPE  |
|  | SANITARY SEWER CLEANOUT            |  | SANITARY SEWER MANHOLE    |
|  | TELEPHONE RISER                    |  | FIBER OPTIC VAULT         |
|  | GAS LINE                           |  | GAS METER                 |
|  | GAS VALVE                          |  | CHAIN LINK FENCE          |
|  | METAL RAILING                      |  | WOOD FENCE                |
|  | HANDICAP PARKING                   |  | NORTH                     |
|  | SIGN                               |  | SOUTH                     |
|  | DEGREES                            |  | EAST                      |
|  | MINUTES (FEET)                     |  | WEST                      |
|  | SECONDS (INCH)                     |  | HATCH (NO PARKING)        |
|  | CENTERLINE                         |  | HATCH (CONCRETE)          |

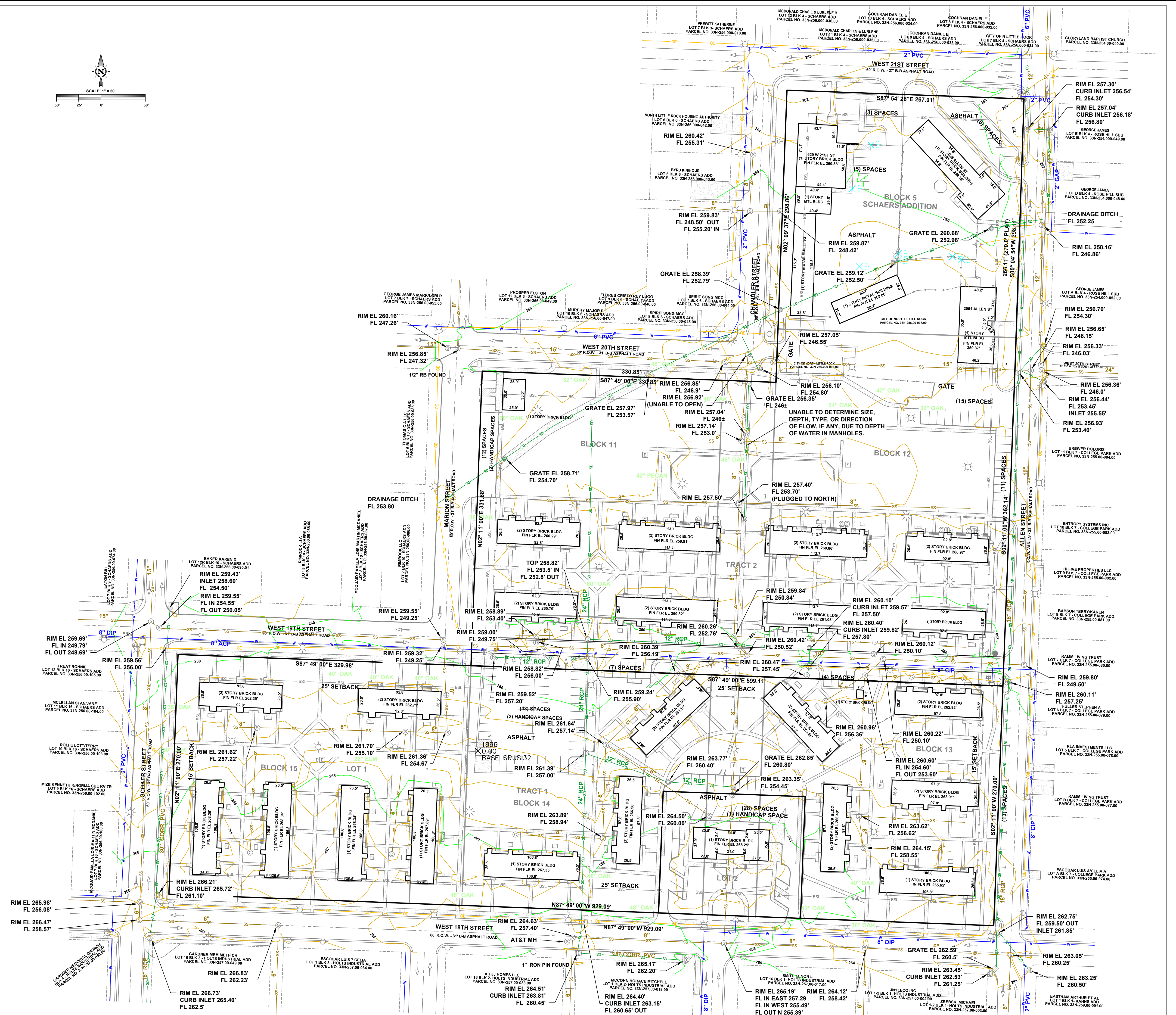
- NOTES:**
- STREET AND ALLEYS CLOSED BY ORDINANCE #1235.
  - ABOVE GROUND UTILITY FEATURES ARE SHOWN PER FIELD SURVEY. UNDERGROUND UTILITY LOCATIONS SHOWN ARE APPROXIMATE AS OBTAINED BY THE PULASKI AREA GEOGRAPHIC INFORMATION SYSTEM (PAGIS), THE NORTH LITTLE ROCK SEWER DEPARTMENT, AND THE ARKANSAS ONE CALL TICKET #180307-1236. CONFLICTS BETWEEN SYMBOLS AND LINES SHOULD BE RESOLVED BY TEST DIGGING OR OTHER MEANS.

**CERTIFICATION**

I hereby certify that the above described land has been surveyed by me or under my direction. The corners are marked as shown and are in accordance with existing monuments in the area. This certification is for the exclusive use and benefit of the parties shown hereon.

*Professional Land Surveyor*

JOHN R. WREEDLE, RLS #1203



5800 Evergreen Dr.  
Little Rock, AR 72205  
Ph (501) 663-8800  
www.harbor.com

**Harbor**

Drawn By: AES  
Checked By: JRT  
Date: 7.30.18  
Scale: NOTED  
Proj No: NLRH-15243

DATE	REVISION DESCRIPTION	NO	BY
XX-XXXX		XX	X

**NLRHA-Silver City Courts & Warehouse Complex**  
NORTH LITTLE ROCK, ARKANSAS  
PULASKI COUNTY  
ALTA / NSPS LAND TITLE TOPOGRAPHIC SURVEY

**S3**