

**Addendum #2
August 6, 2020**

Project: Nance Place Security Upgrades
8 Academy Place, Suite S-200
Nashville, TN, 37210

Pre-Bid Sign-In Sheet: See attached Pre-Bid Sign-In Sheet.

Acknowledgements: Bidders are to acknowledge Addendum #1 and Addendum #2 on the Bid Form.

Revised Drawings: See attached revised drawings:
A110 Enlarged Plans: Revised Details 9 and 10.
A301 Elevations and Sections: Revised Sections 2 and 3. Added Details 6 and 7.

Q2: (Repeated from Addendum #1. See revised Answer "A2" below): Can you supply the Lever Style and Lever Cylinder type for the NDE80'S? The door hardware calls for 626 finish, but does not call out the other information.

A2: (Revised Answer A2)

Delete the following Answer **A2** from Addendum #1: "The Lever Style and Lever Cylinder type are selected during the submittal process."

The lever style is Tubular (TLR).

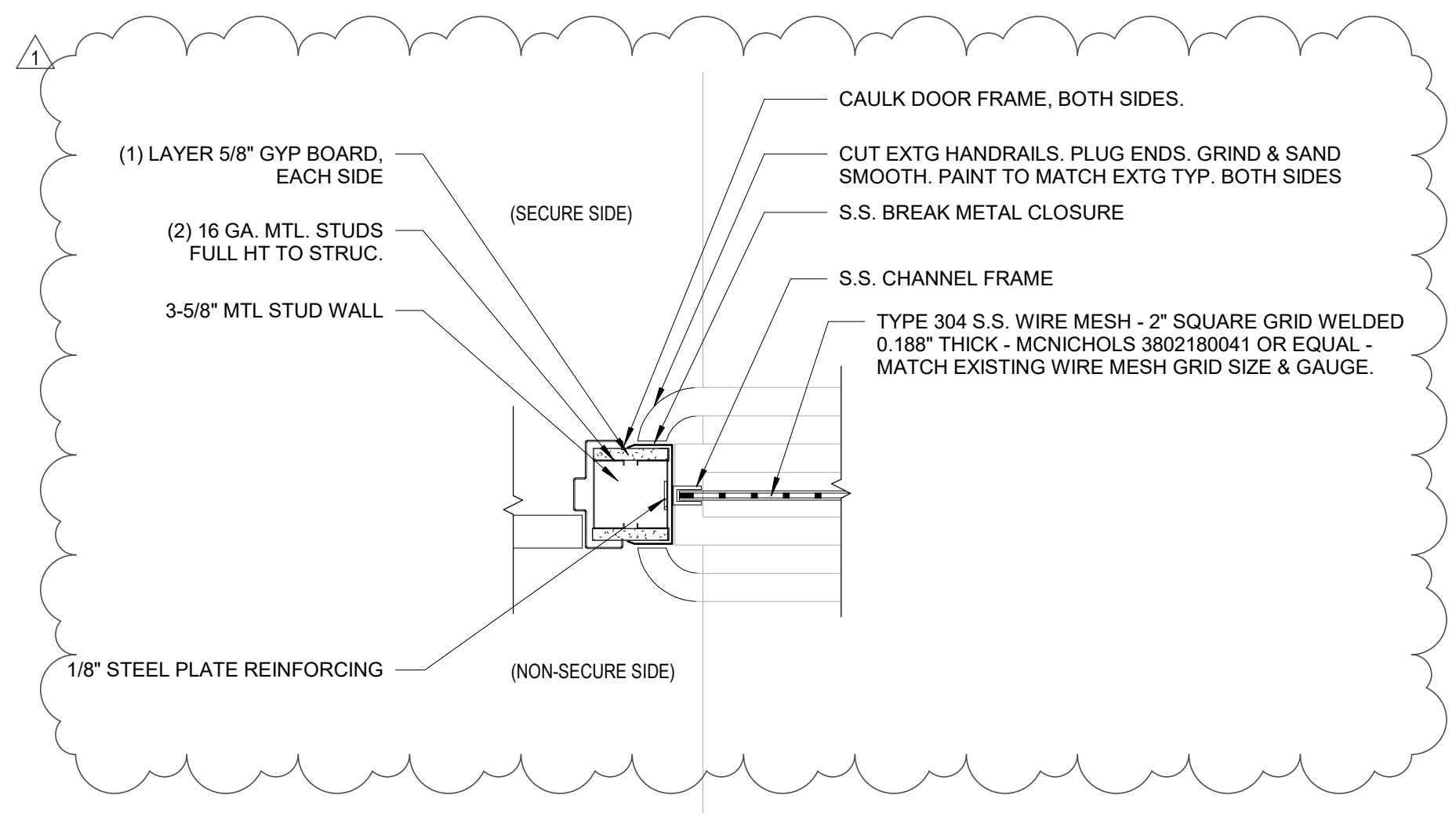
The cylinder type is Classic or Primas XP. The keys are not to be labeled "Do Not Duplicate." All locks are keyed alike.

Q3: The Lever style will make a difference in the cost, so does finish. The finish is called out 626, but there is not a lever style. To get accurate pricing we will need this information. Can you supply us with the lever style MDHA wishes to use? This can be changed anytime before order (with possible cost adjustments), but is needed for accurate pricing on bid.

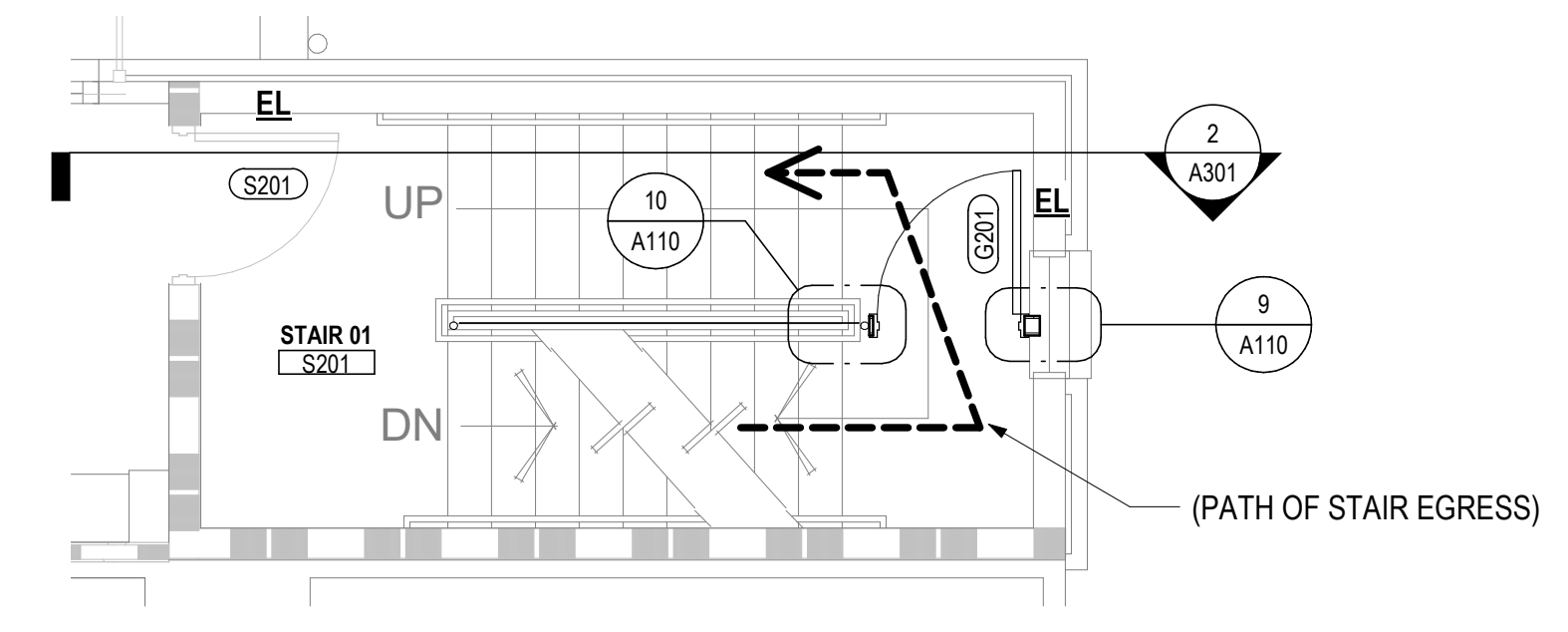
A3: See A2: (Revised Answer A2) above.

End of Addendum No. 2

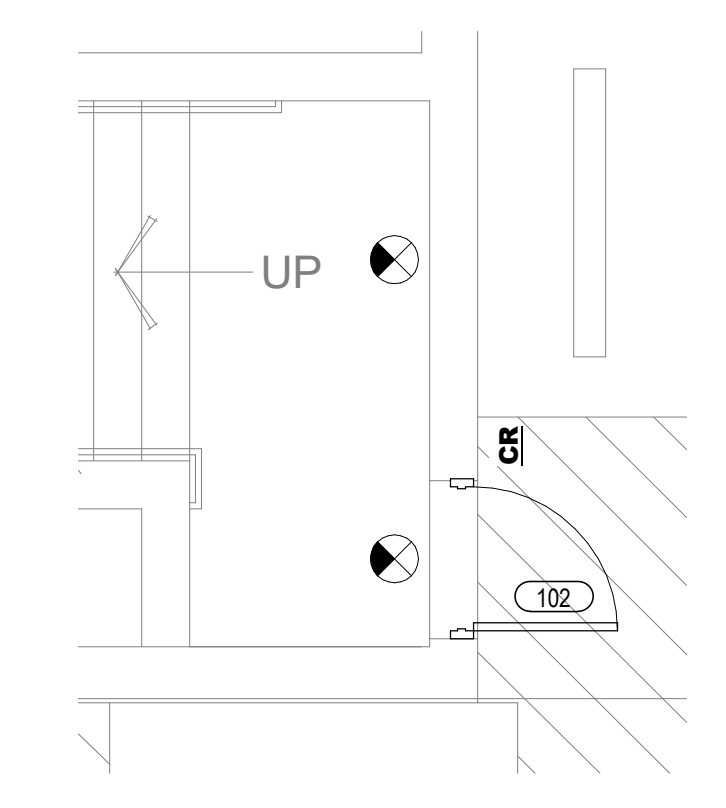




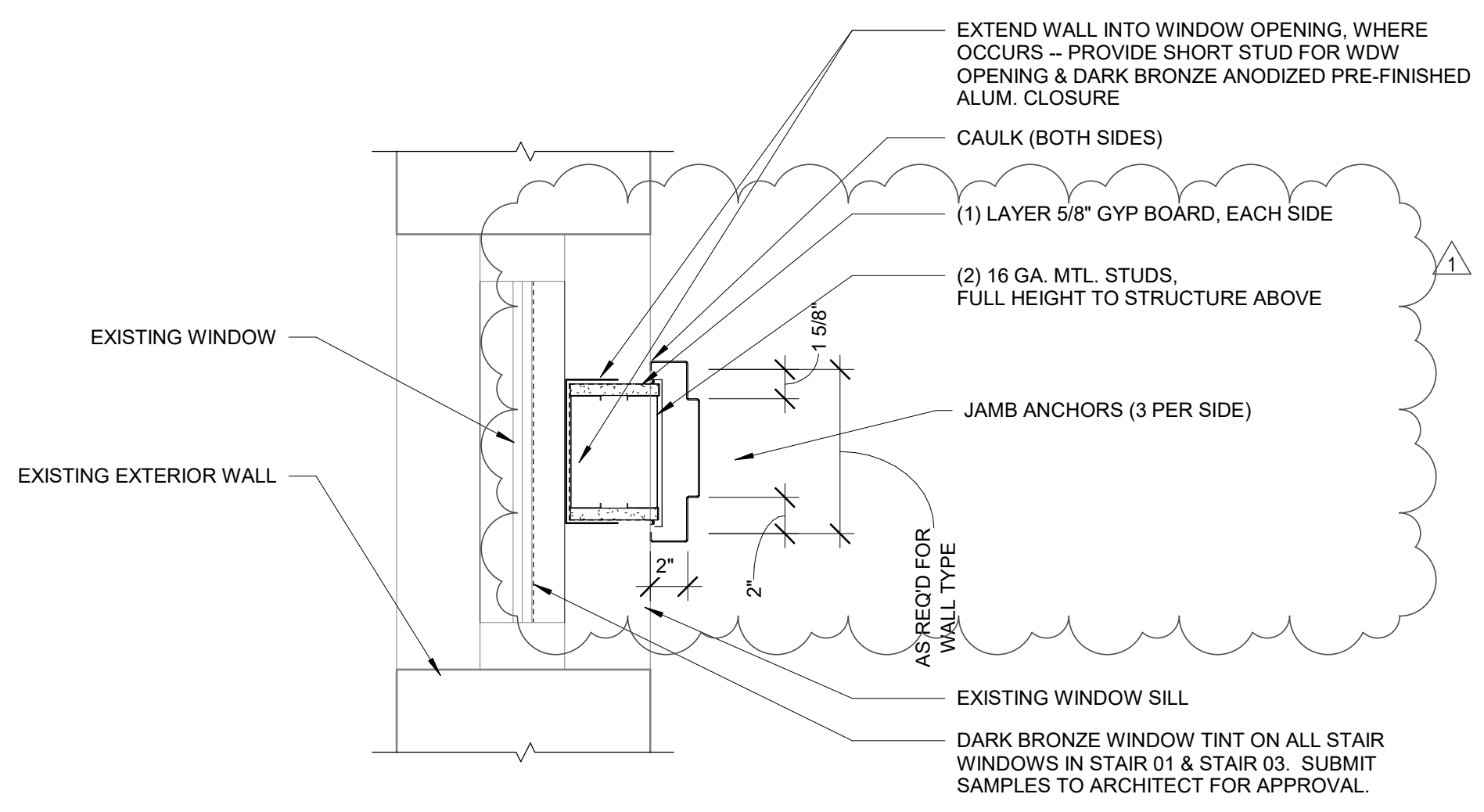
10 DETAIL SECURITY STAIR MESH SCREEN JAMB
1 1/2" = 1'-0" REF: 6 / A110



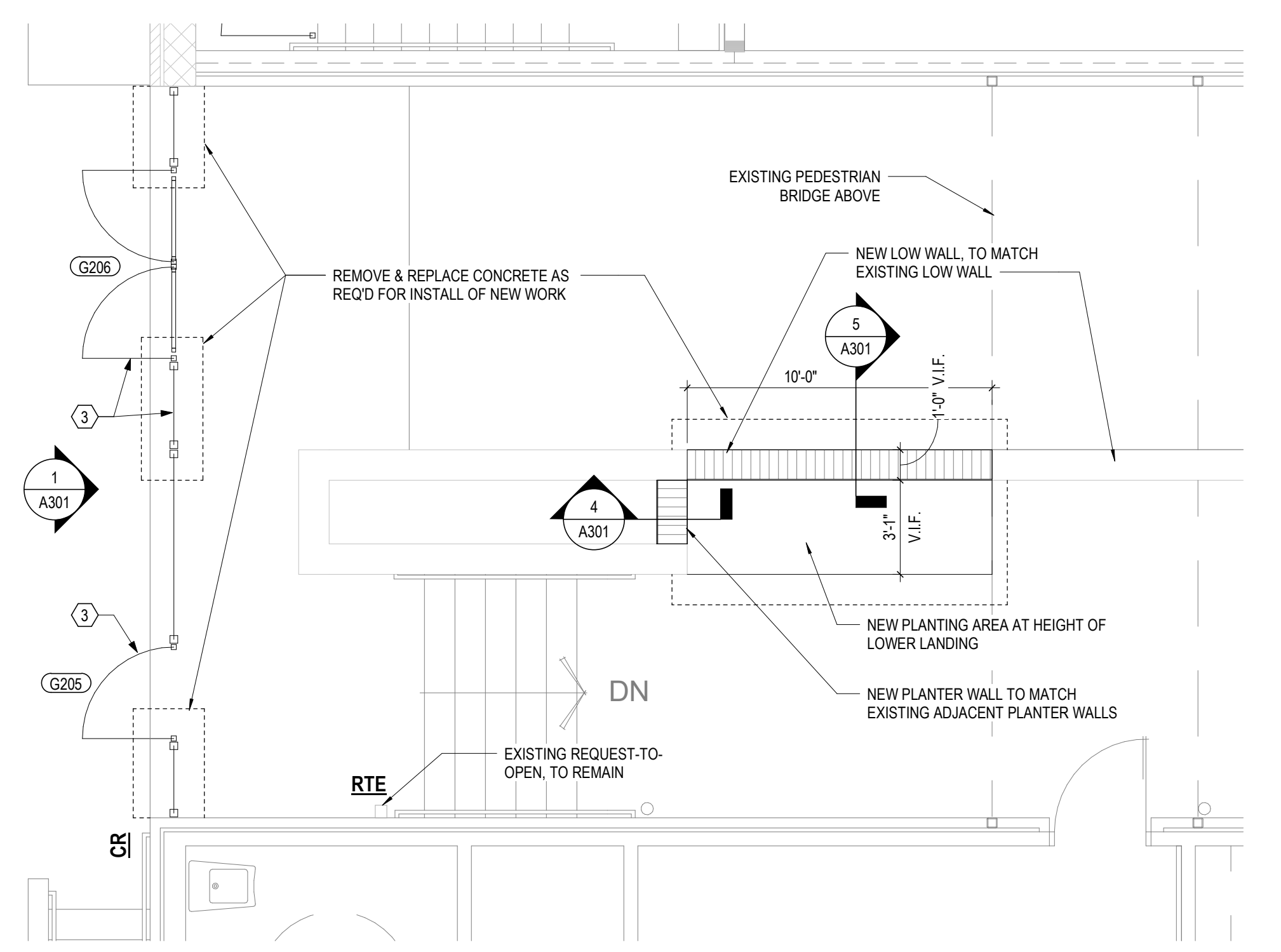
6 PLAN ENLARGED STAIR 01 - LEVEL 2
1/4" = 1'-0"



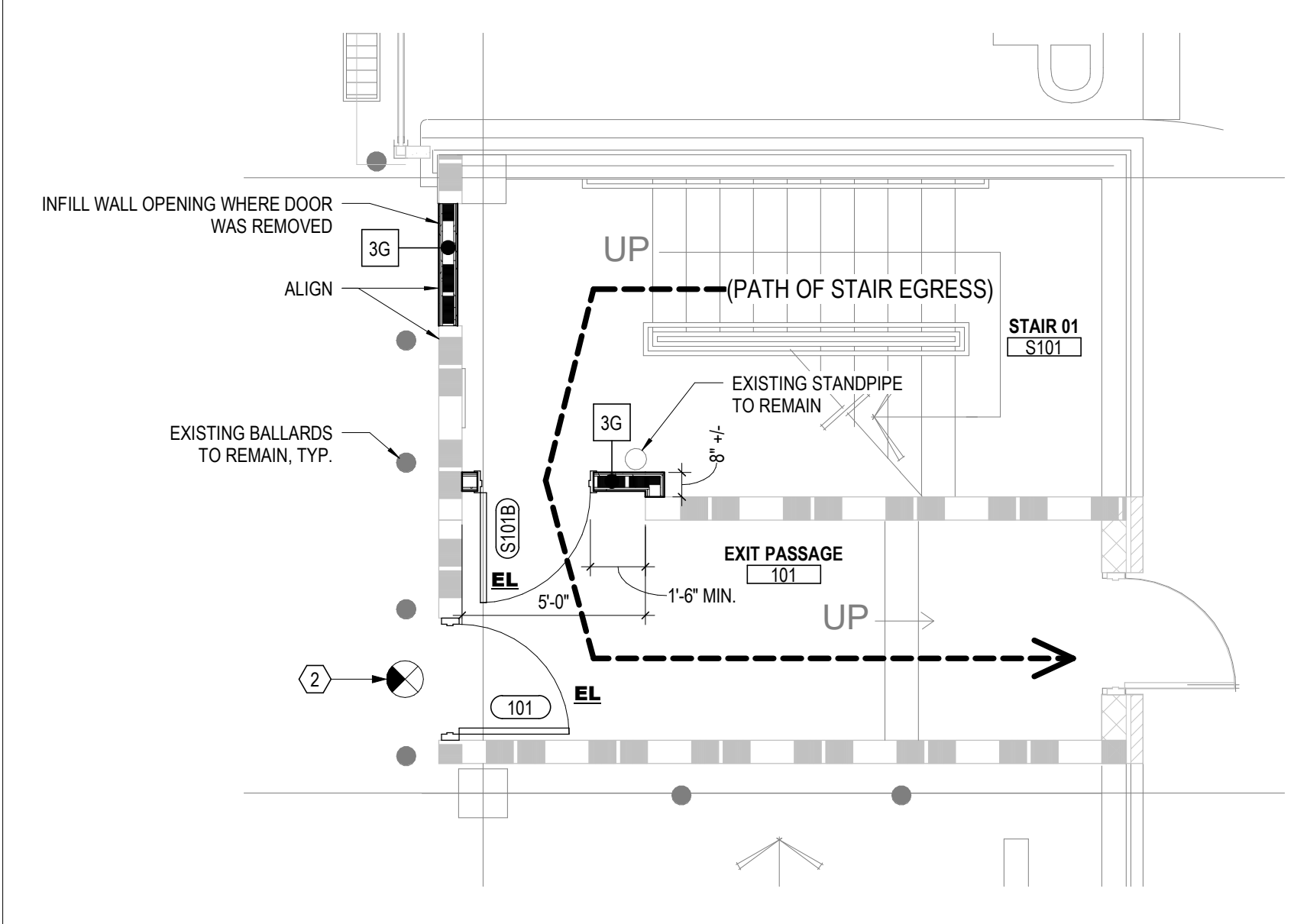
3 PLAN LEVEL 01 - COURTYARD EXIT
1/4" = 1'-0"



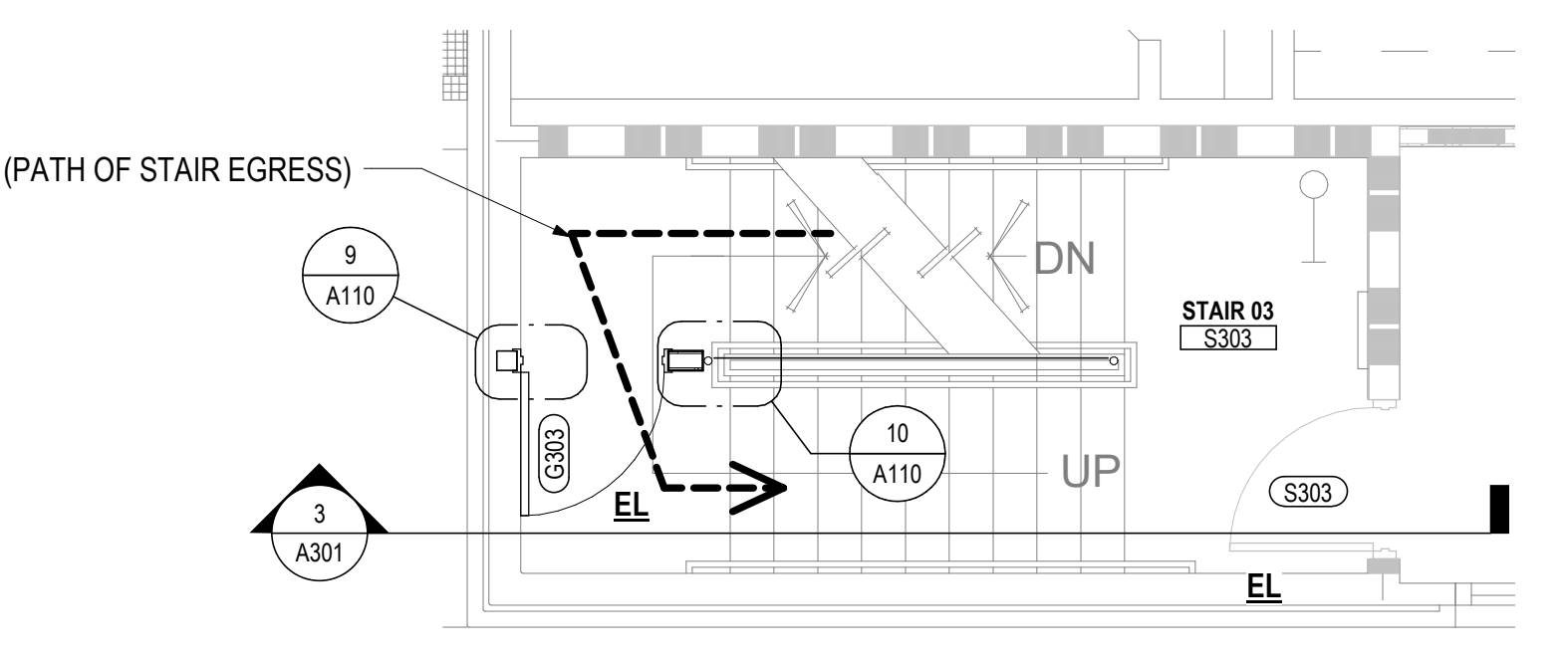
9 DETAIL SECURITY STAIR DOOR - JAMB @ WDW
1 1/2" = 1'-0" REF: 6 / A110



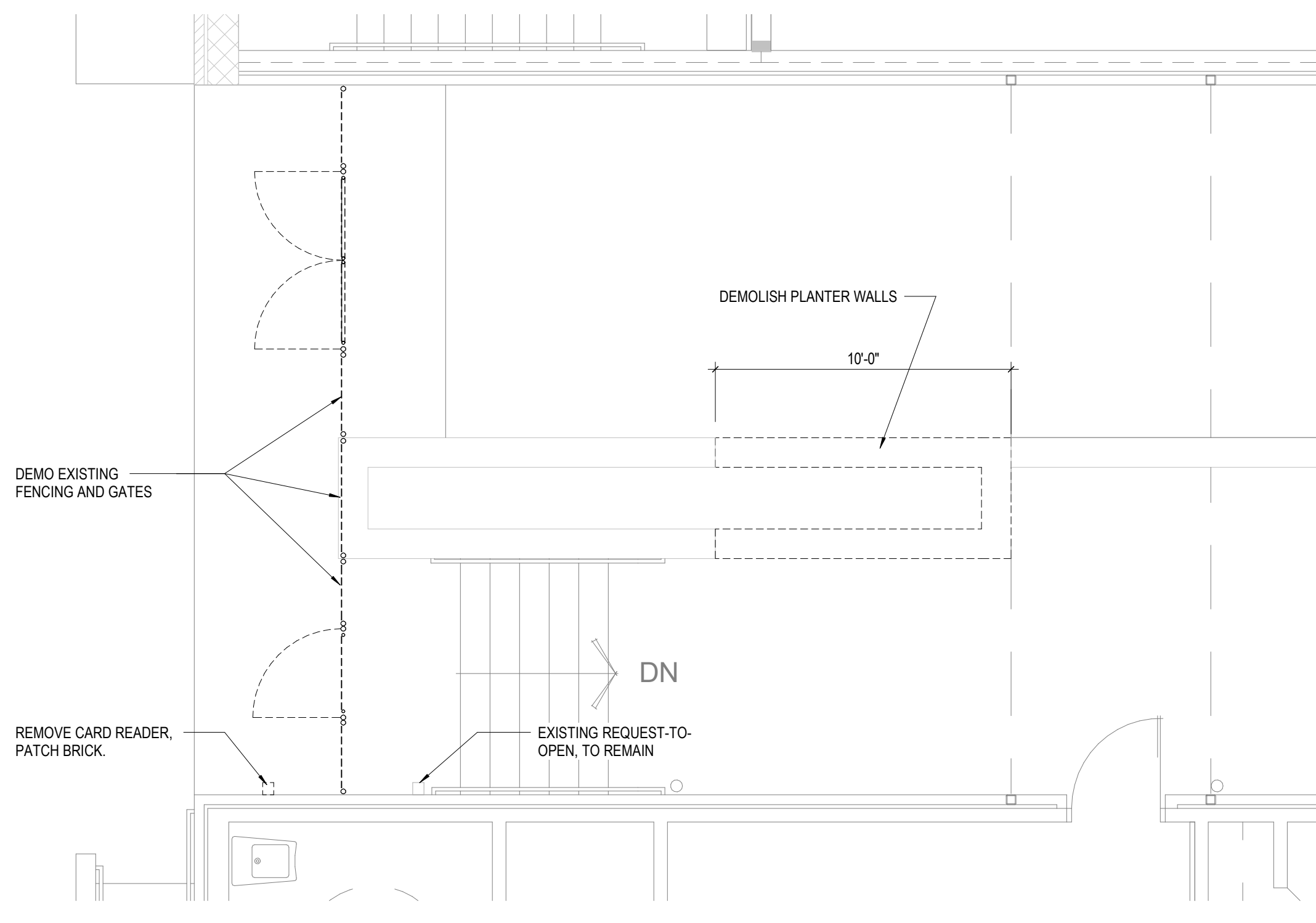
5 PLAN ENLARGED COURTYARD ENTRY GATE
1/4" = 1'-0"



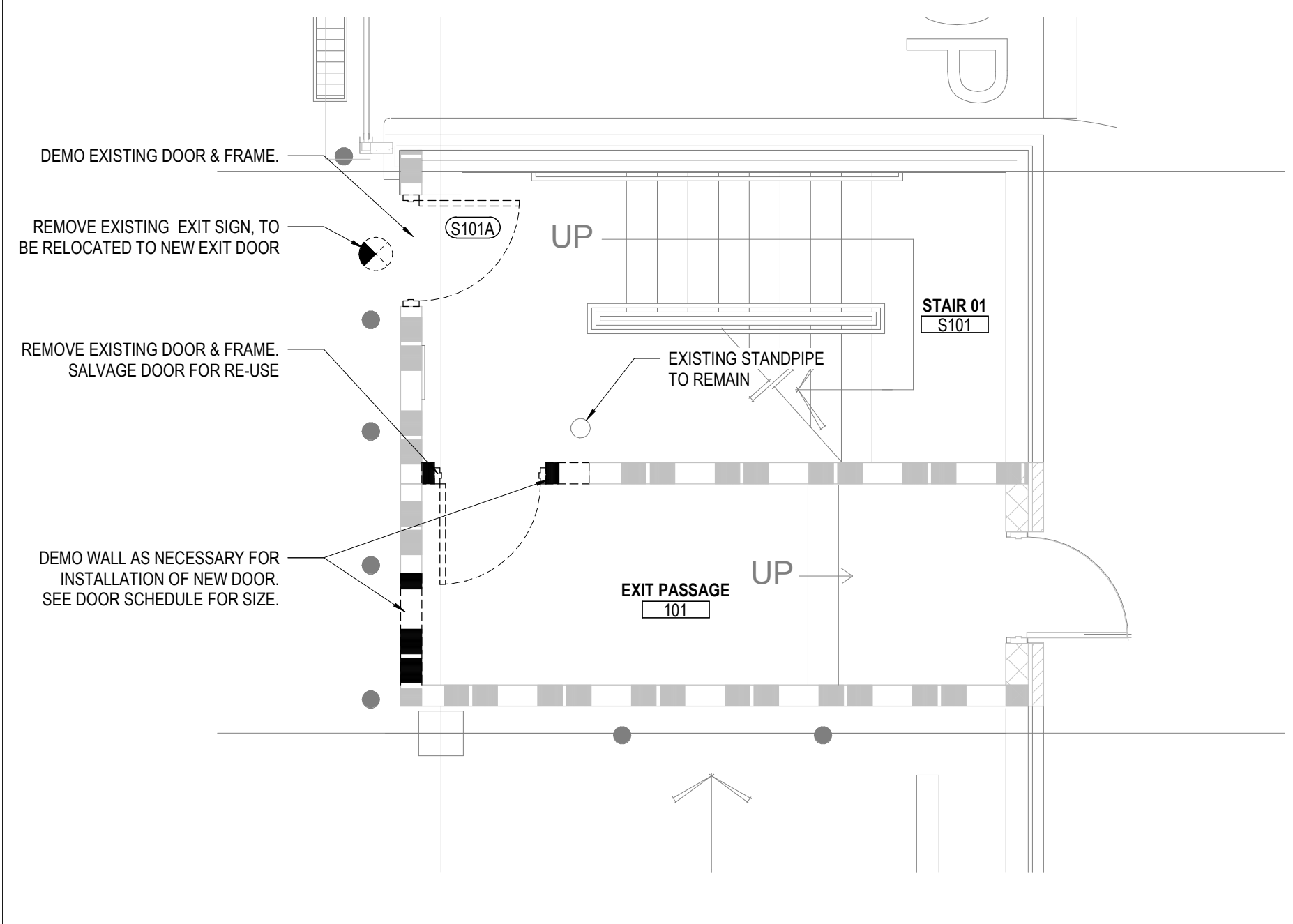
2 PLAN ENLARGED STAIR 01 & VESTIBULE
1/4" = 1'-0"



8 PLAN ENLARGED STAIR 03 - LEVEL 03
1/4" = 1'-0"



4 PLAN OVERALL SECOND FLOOR DEMOLITION PLAN
1/4" = 1'-0"



1 PLAN ENLARGED STAIR 01 & VESTIBULE - DEMOLITION
1/4" = 1'-0"

GENERAL NOTES - ENLARGED PLANS

- ALL DIMENSIONS ARE TO FACE OF WALL (UNLESS NOTED OTHERWISE).
- PATCH / REPAIR ALL DAMAGE INCURRED DURING DEMOLITION. RESTORE TO ORIGINAL INTEGRITY.

- ### - DOOR TAG, SEE SCHEDULE ON SHEET A701 FOR INFORMATION
- CR - CARD READER
- Ⓢ - NEWRELOCATED EXIT SIGN
- RTE - REQUEST TO EXIT
- EL - ELECTRONIC SELF-CONTAINED LOCKSET

RATED WALL LEGEND

- EXISTING 1 HOUR FIRE RATED PARTITION
- EXISTING 2 HOUR FIRE RATED PARTITION
- NEW 1 HOUR FIRE RATED PARTITION
- NEW 2 HOUR FIRE RATED PARTITION

CODED NOTES - ENLARGED PLANS

- NEW STAIR EGRESS GATE TO MATCH OTHER EXISTING GATES
- RELOCATED EXIT SIGN FROM ABOVE DOOR S101A, TO WALL OVER DOOR 101
- NEW ORNAMENTAL FENCE AND GATE - PRE-FINISHED METAL TO MATCH EXISTING.

#	DATE	CHANGE DESCRIPTION
1	8/6/20	Addendum #2

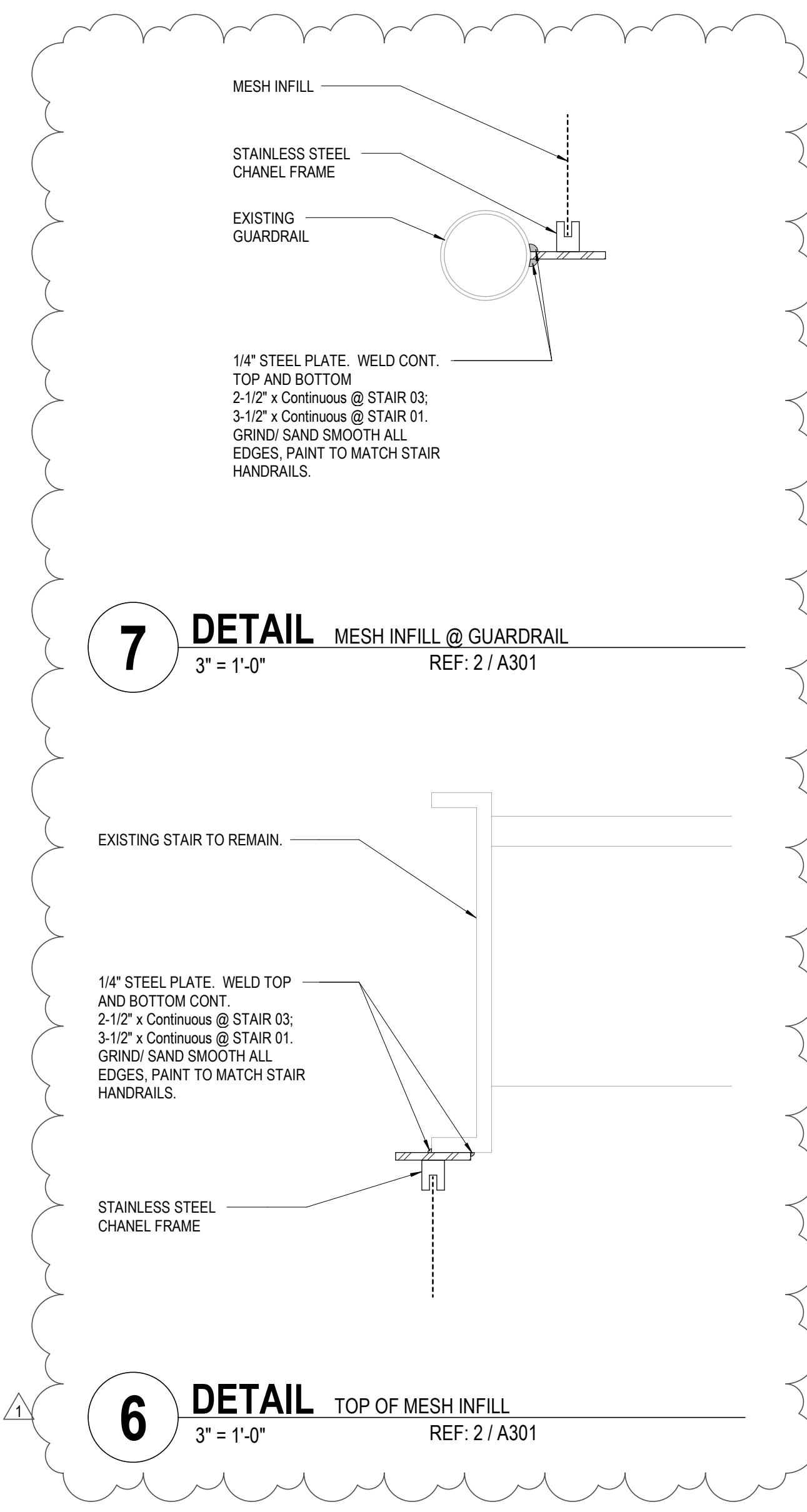
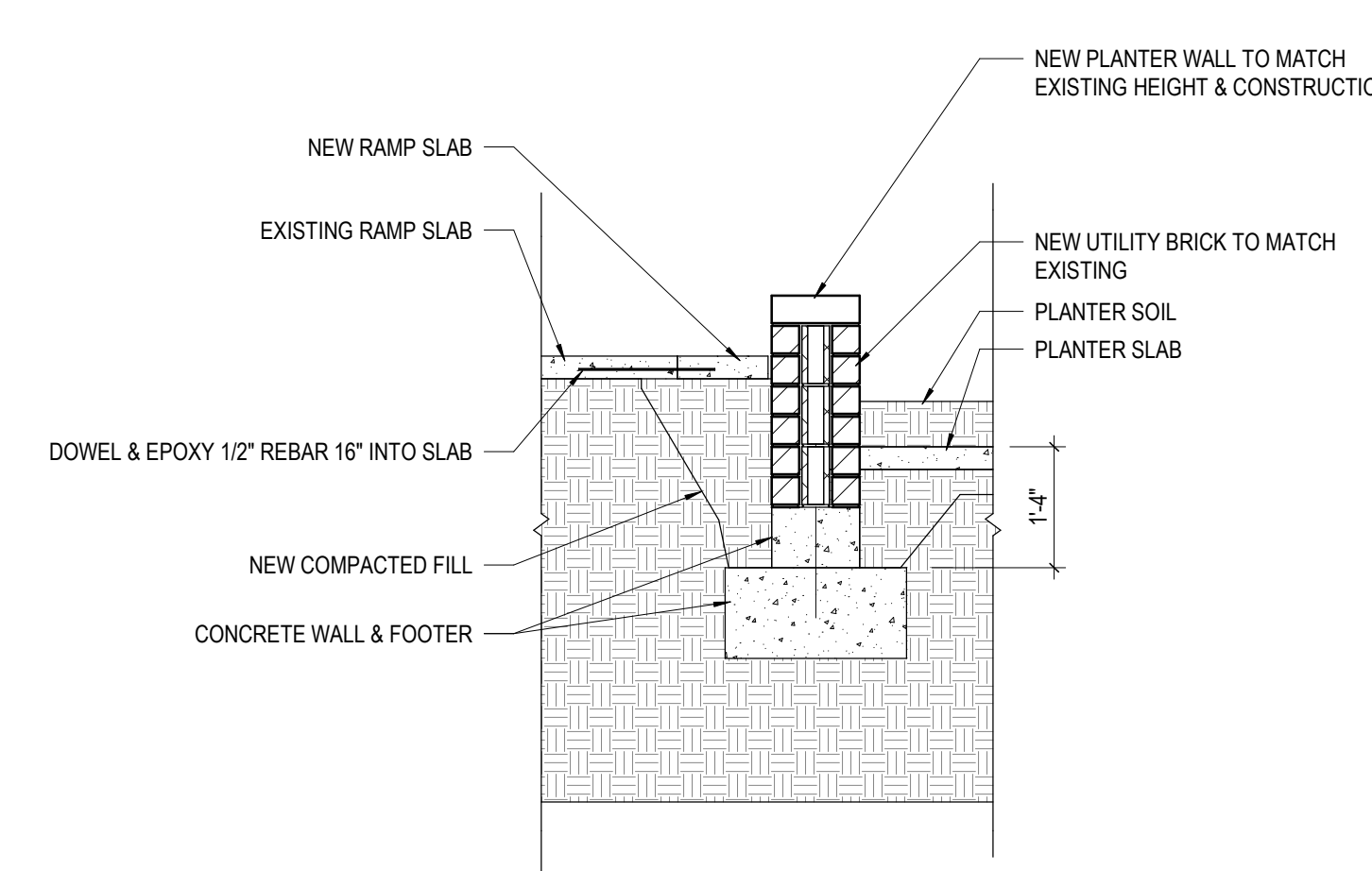
Nance Place Security Upgrades
FOR
Metropolitan Development and Housing Agency

1625 BROADWAY
4TH FLOOR
NASHVILLE, TN 37203
PHONE: (615) 386-9690
FAX: (615) 386-0528

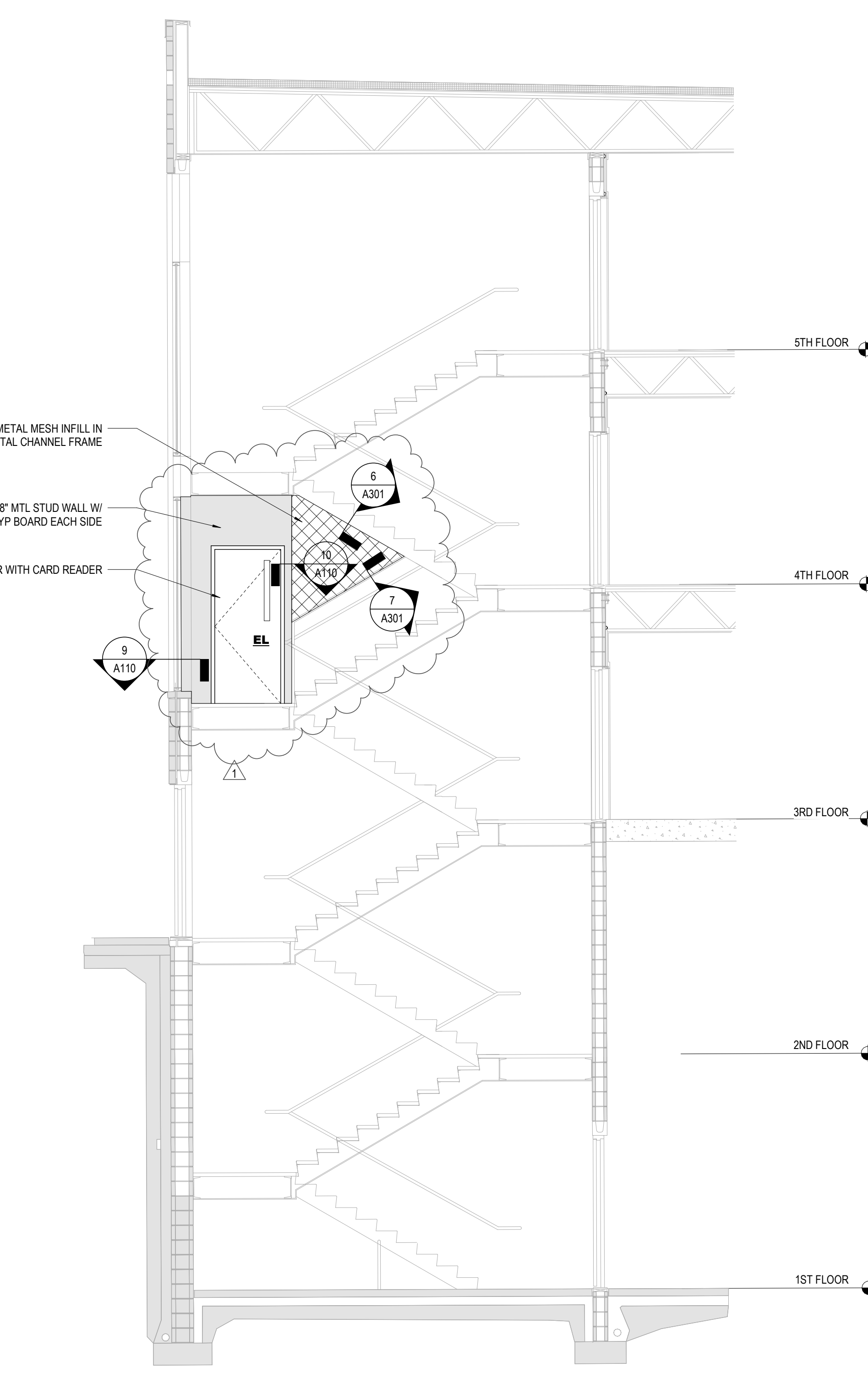
ENLARGED PLANS

03/09/20
DRAWN BY: JT CHECKED BY: AL
18560.02
A110
Construction Documents

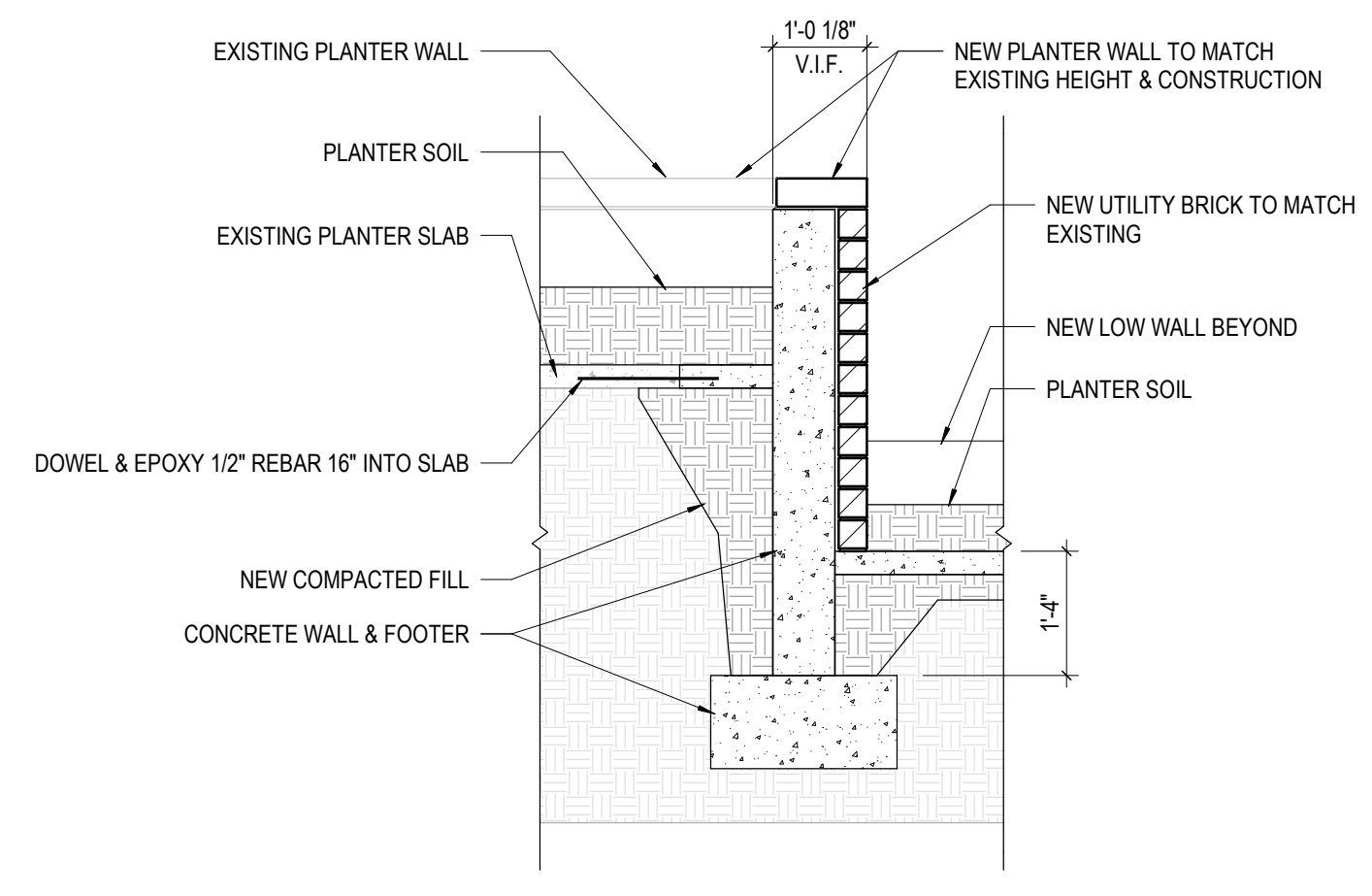
5 SECTION THROUGH LOW PLANTER WALL
 1/2" = 1'-0"
 REF: 5 / A110



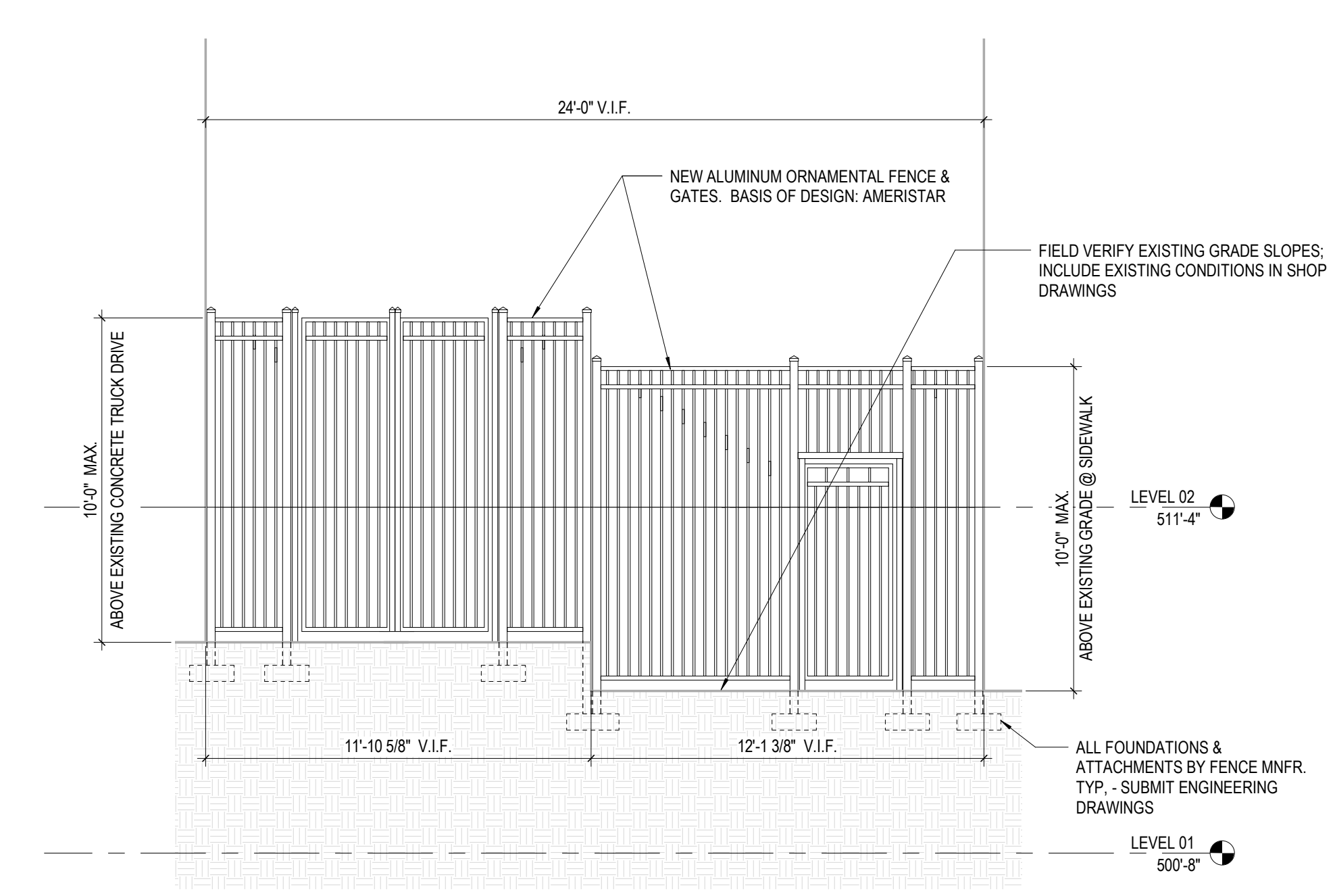
3 SECTION STAIR 03 - LEVEL 3 GATE
 1/4" = 1'-0"
 REF: 8 / A110



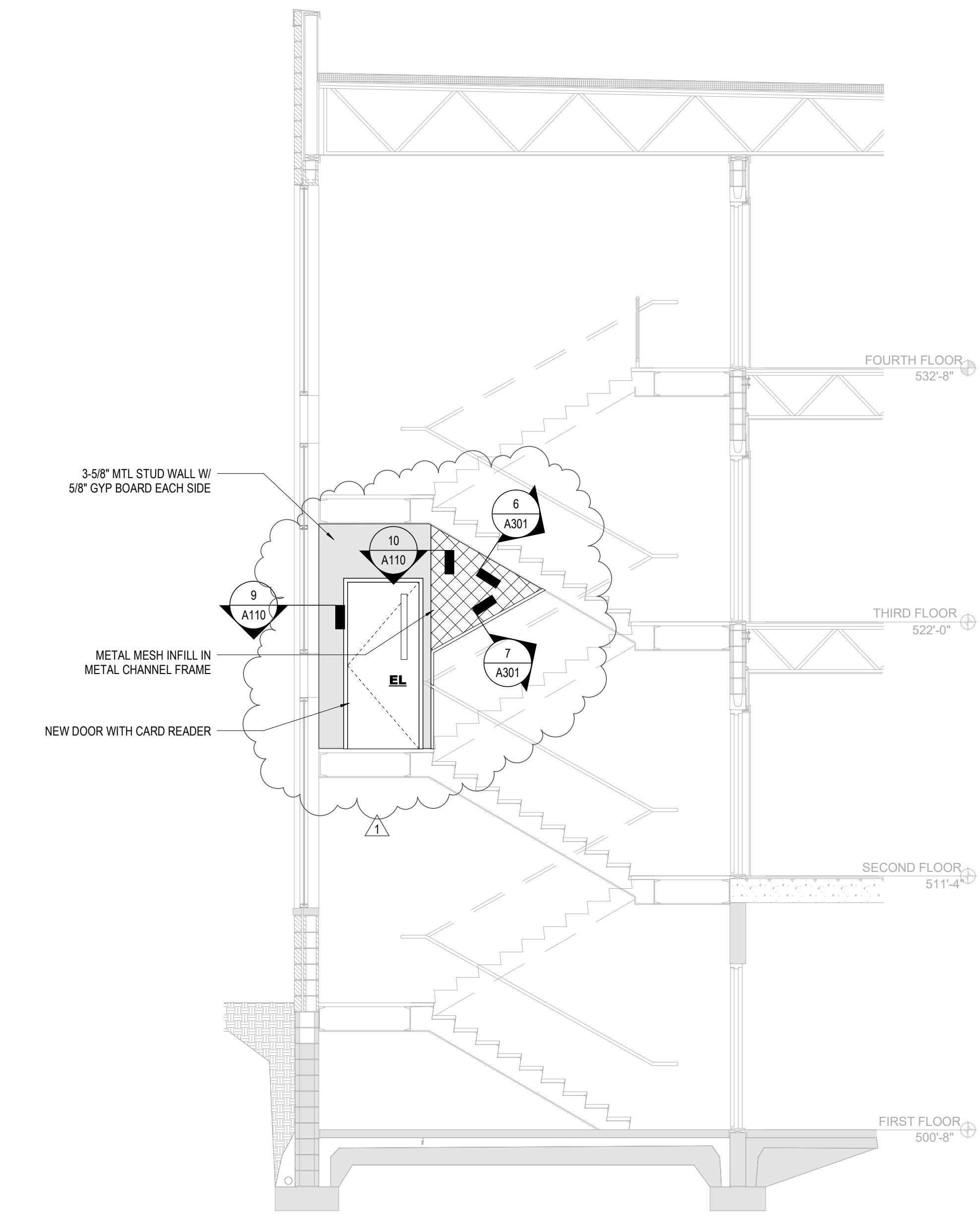
4 SECTION THROUGH TALL PLANTER
 1/2" = 1'-0"
 REF: 5 / A110



1 ELEVATION ORNAMENTAL FENCE @ COURTYARD ENTRY
 1/4" = 1'-0"
 REF: 5 / A110



2 SECTION STAIR 01 - LEVEL 2 GATE
 1/4" = 1'-0"
 REF: 6 / A110



#	DATE	CHANGE DESCRIPTION
1	8/6/20	Addendum #2

Nance Place Security Upgrades
 8 Academy Place, Ste 5-200, Nashville, TN 37210
 FOR
Metropolitan Development and Housing Agency
 1625 BROADWAY
 4TH FLOOR
 NASHVILLE, TN 37203
 PHONE: (615) 386-9690
 FAX: (615) 386-0528

DRAWING TITLE:
ELEVATIONS & SECTIONS

03/09/20
 DRAWN BY: JT
 CHECKED BY: AL
 18560.02
A301
 Construction Documents