



QSP#21-003  
Addendum 2: Updated documents

Attached please find an updated door map with legend as well as an updated Scope of Work. Please submit your quotes using the form on page 3 of the original QSP 21-003 document.

## SCOPE OF WORK

### Controlled Access Upgrade

Ralph Richards Tower  
211 S Prospect Ave  
Clearwater, FL 33756

All visitors must be accompanied by a Housing Authority representative. For questions or site visit, please contact:  
Lewis Baughey 727-479-5430

#### Contactor shall:

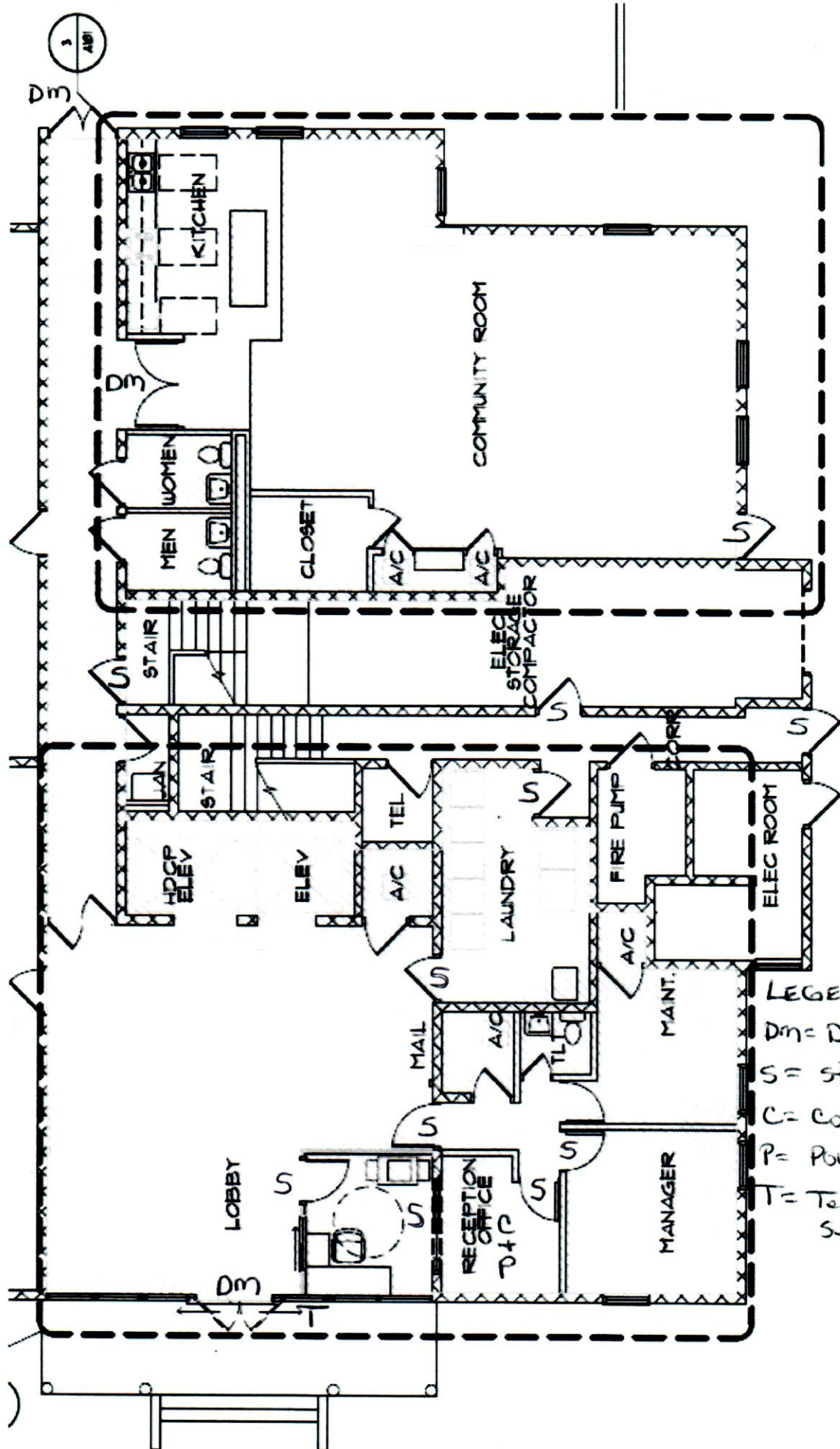
- Install new DKS 1835 telephone entry system (or equivalent) to replace existing system at main entrance.
- Install DKS TCP/IP to RS485 addressable server (or equivalent). To be installed with the TES for voice and data communication as well as CHA's network with their own separate IP addresses.
- Install four (4) DKS (or equivalent) large tracker enclosures with tracker board. To be installed in office.
- Install ten (10) DKS (or equivalent) tracker boards inside of the enclosures with each board controlling a door.
- Install fourteen (14) multi-protocol card readers. To be installed at all 8 doors. Please see map for detail.
- Install three (3) request to motion devices. To be installed on doors equipped with magnetic locks as the primary egress. Doors 1, 7, and 8 on detail map.
- Install three (3) no-touch exit devices. To be installed on doors equipped with magnetic locks as the primary egress. Doors 1, 7, and 8 on detail map.
- Install a dual 1200LB UL rated electromagnetic lock. To be installed at door 7. Please see map for detail.
- Install eight (8) Hes 5200 recessed door strikes at doors 2 and 4. Please see map for detail.
- Install three (3) Hes 9600 surface door strikes at doors 3, 5, and 6. Please see map for detail.
- Install one (1) Altronix power supply with fire relay at the controller that powers magnetic locks.
- Install two (2) 7-AMP hour batteries inside of Altronix power supply.
- Install one (1) 16-channel/18-AMP power supply to power strikes and exit devices.
- Install two (2) 900va battery backups at access controller in office.
- Run UV shielded 18/6 cable from controller/power supply to each door. 1680 Feet.
- Run one (1) Ethernet cables from TCP/IP servers to the customer's network switch.
- Provide one hundred (100) access fobs.
- Install management software on a computer of CHA's choosing.
- Contractor shall provide training on software once installed.
- Contractor to provide all cabling, ends, and necessary mounts to insure proper installation.

- 
- Contractor shall provide all labor to complete the scope.
    - Contractor shall haul away all material from jobsite.
    - Contractor shall provide labor and warranty to Owner.
    - Required permits will be provided by the Contractor

- Contractor shall provide warranty on parts and labor.

Please submit quotes directly to [MCvetinovic@clearwaterhousingauth.org](mailto:MCvetinovic@clearwaterhousingauth.org) no later than close of business  
March 22nd, 2021.





LEGENDS:  
 Dm = Dual maglock  
 S = strike  
 C = controller  
 P = POWER  
 T = Telephone Entry System