

CWS ARCHITECTS
ARCHITECTURE | INTERIOR DESIGN
264 U.S. ROUTE ONE
BOX 6, SUITE 100-2A
SCARBOROUGH, MAINE 04074
207 774 4441
WWW.CWSARCH.COM

OWNER
PORTLAND HOUSING
AUTHORITY
14 BAKER BLD
PORTLAND, MAINE 04101

PROJECT
HARBOR TERRACE
ELECTRICAL UPGRADE

DRAWING
ELECTRICAL NOTES, DETAILS
AND EXISTING
ONE LINE DIAGRAM AND
SWITCHBOARD ELEVATION
CWS PROJECT NUMBER: 21037

REVISIONS

NO.	DATE	DESCRIPTION
1.	10/21/21	ADDENDUM

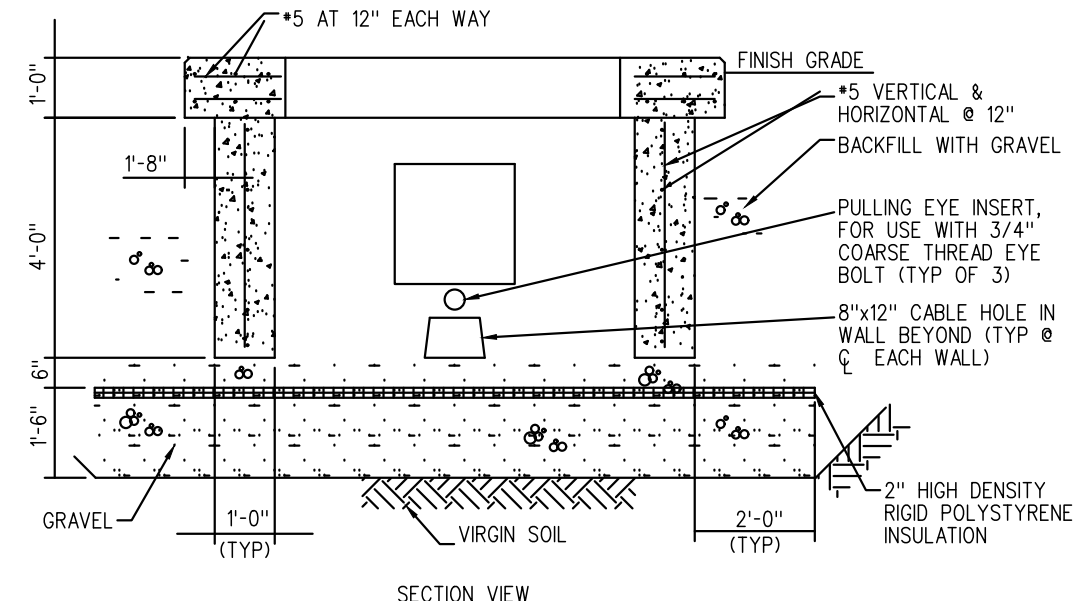
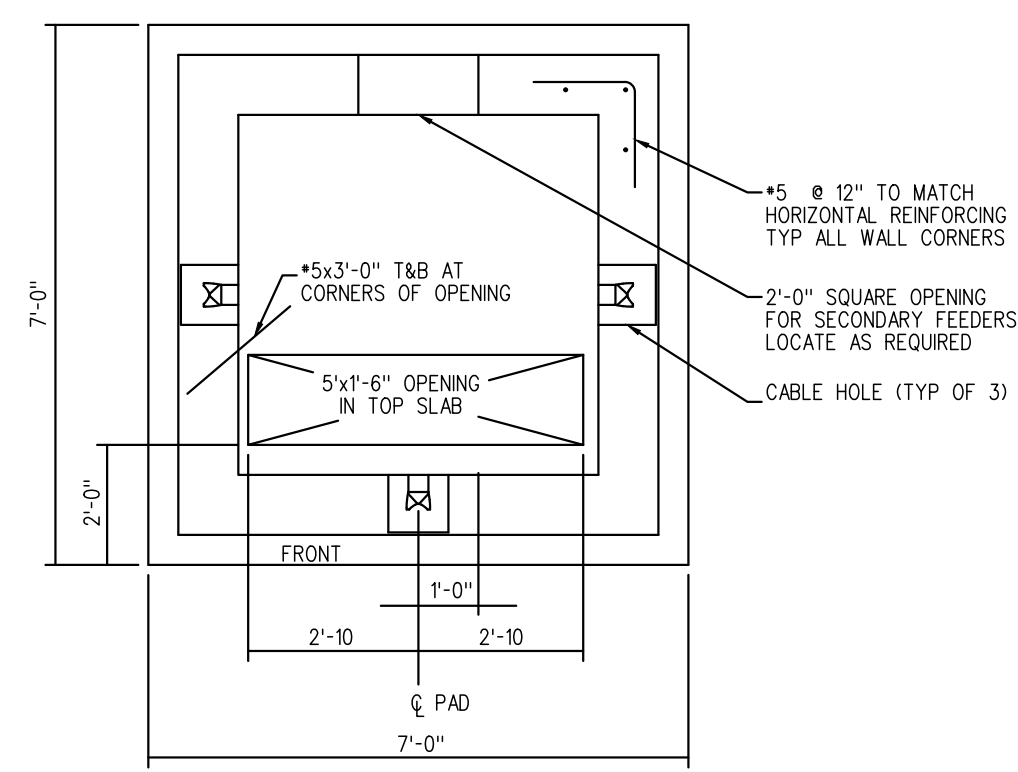
DRAWING NUMBER
ES0.0
SCALE:
DATE: 08/23/2021

NOTE 1:

CONTRACTOR TO PROVIDE A JUNCTION BOX AT EACH FEEDER TO CONNECT EXISTING FEEDERS TO NEW FEEDERS

GENERAL NOTES- SITE ELECTRICAL

- THE COMPLETE INSTALLATION SHALL CONFORM WITH ALL APPLICABLE FEDERAL, STATE AND LOCAL LAWS, CODES AND ORDINANCES, INCLUDED BUT NOT LIMITED TO APPROVED EDITIONS OF THE FOLLOWING: NATIONAL ELECTRICAL SAFETY CODE (ANSI C2); NATIONAL ELECTRICAL CODE (NFPA 70); OCCUPATIONAL SAFETY AND HEALTH ACT (OSHA) AND ALL AMENDMENTS THERE TO. NOTHING CONTAINED IN THE DRAWINGS AND SPECIFICATIONS SHALL BE CONSTRUED TO CONFLICT WITH THESE LAWS, CODES, AND ORDINANCES, AND THEY ARE THEREBY INCLUDED IN THESE SPECIFICATIONS. OBTAIN PERMITS AND REQUEST INSPECTIONS FROM ALL AUTHORITIES HAVING JURISDICTION. COMPLY WITH ALL POWER, TELEPHONE, CABLE TELEVISION PROVIDER REGULATIONS AND STANDARDS.
- ELECTRICAL UTILITY SHALL PROVIDE ALL ASSOCIATED OVERHEAD AND UNDERGROUND PRIMARY WIRING, PRIMARY TERMINATIONS, TRANSFORMERS, AND CONNECTIONS TO EXISTING OVERHEAD LINES. CONTRACTOR SHALL PROVIDE UNDERGROUND CONDUIT.
- PROVIDE UNDERGROUND ELECTRICAL WARNING TAPE- 6" WIDE PLASTIC TAPE, COLORED RED WITH SUITABLE LEGEND DESCRIBING BURIED ELECTRICAL LINES FOR ALL UNDERGROUND CONDUITS. LOCATE 6 INCHES BELOW FINISHED GRADE.
- REFER TO CIVIL DRAWINGS FOR EXCAVATION AND BACKFILL OF ALL UNDERGROUND WORK.
- EXISTING UTILITY LOCATIONS ARE APPROXIMATE AND SHALL BE FIELD VERIFIED. CONTRACTORS SHALL CONTACT DIG SAFE BEFORE BEGINNING ANY EXCAVATIONS.
- FINAL LOCATION OF NEW UTILITIES MAY VARY FROM PLANS PENDING UTILITY COMPANY FIELD COORDINATION.
- UNDERGROUND CONDUIT SHALL BE SCHED 40 PVC, ABOVE GRADE CONDUIT SHALL BE RGS. ALL CONDUIT SWEEPS SHALL BE RGS LONG SWEEPS.
- PROVIDE EXPANSION FITTINGS FOR ALL UNDERGROUND CONDUIT CONNECTED TO FIXED ABOVE GROUND STRUCTURES.
- PROVIDE A LISTED INTERSYSTEM BONDING TERMINAL AT THE SERVICE ENTRANCE. INSTALL IN ACCORDANCE WITH NFPA 70, 250.94
- REFER TO ONE-LINE DIAGRAM FOR ADDITIONAL INFORMATION.

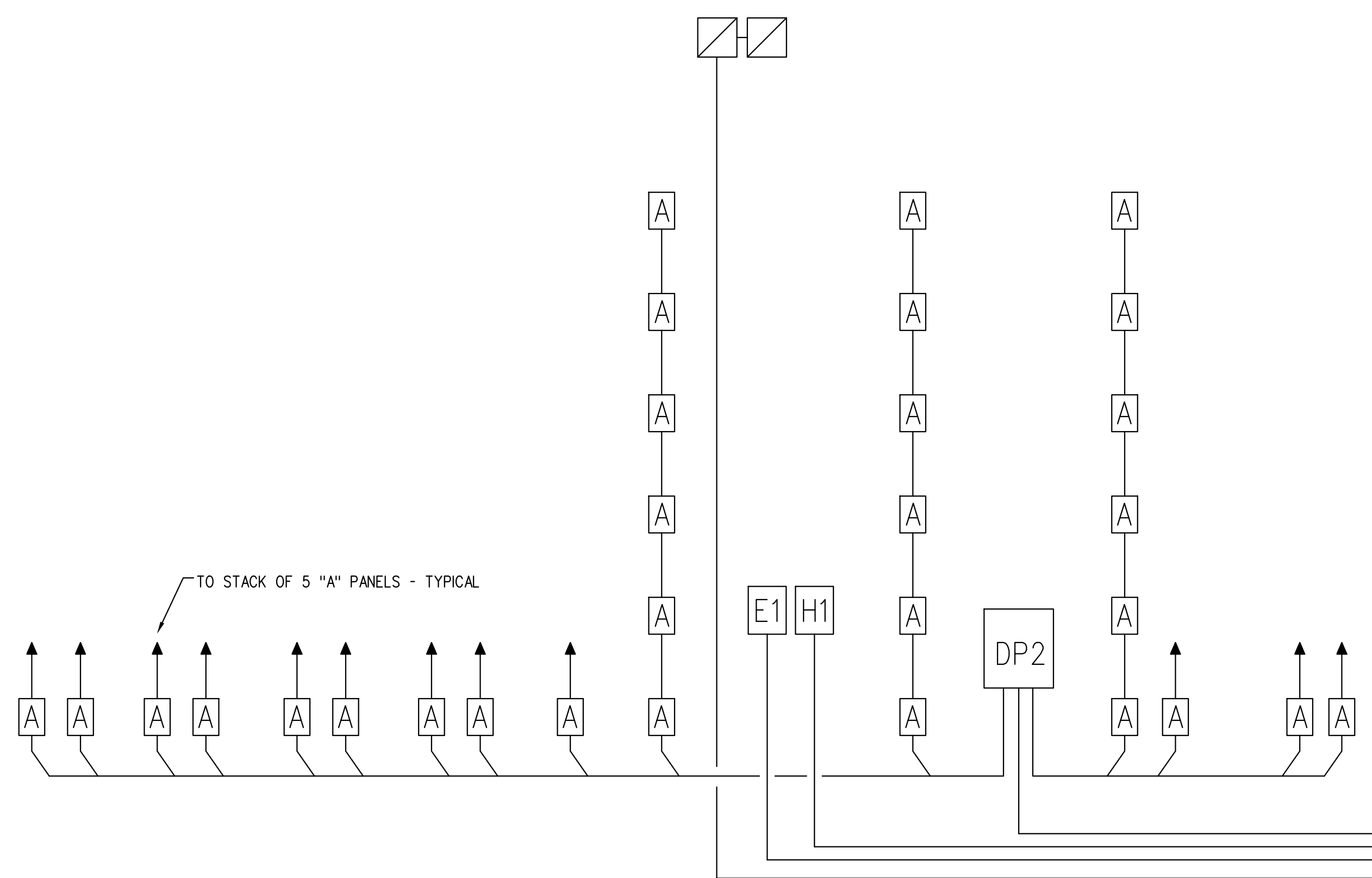


TRANSFORMER PAD

- SCALE: NONE
- NOTES:
- PLACE CONCRETE PAD ON GRAVEL AND PROVIDE ADEQUATE DRAINAGE AWAY FROM PAD. REINFORCE AS SHOWN.
 - "FRONT" DENOTES THE SIDE ON WHICH THE TRANSFORMER ACCESS DOORS ARE LOCATED. THE PAD MUST BE INSTALLED SO THAT THE FRONT IS READILY ACCESSIBLE.
 - PROVIDE 8" X 12" CONDUIT HOLES AS REQUIRED. LINE UP WITH TRENCHES. HOLES MAY EXTEND TO BOTTOM OF WALLS.
 - COORDINATE PAD DIMENSIONS WITH TRANSFORMER MANUFACTURERS RECOMMENDATIONS.
 - PRECAST PAD OF EQUAL CONSTRUCTION IS ACCEPTABLE.
 - APPROXIMATE CONFIGURATION, CONTRACTOR SHALL COMPLY WITH POWER UTILITY STANDARD DETAILS. CONTACT UTILITY FOR MORE INFORMATION.

DP		HDP
175A — 175A	1200A	P2 — H1
175A — 175A	120/208V	100A — 100A
175A — 175A	3PH	P1 — H2
		200A — 200A
		FIRE PUMP
		200A — 200A
800A		GEN
CT	1200A	CT
	120/208V	
	3PH	

1
ES1.0
SCALE: NONE



2
ES1.0
SCALE: NONE

