

July 07, 2022

This Addendum to the Invitation for Bid (IFB) serves to notify all interested bidders of clarifications and or changes to IFB No. P22002, and becomes part of this IFB. Proposers are required to acknowledge receipt of this addendum in their bid. If not acknowledged, Proposers' bid may be considered "non-responsive."

➤ **ADDITION TO SCOPE:**

- **IN ADDITION TO THE "UNIT REHAB" Scope:**
  - Install Kidde integrated 3-1 led strobe /smoke and co alarm location to meet ADA requirements
- **IN ADDITION TO THE "ADA UNIT CONVERSION" Scope:**
  - Relocate toilet from facing shower to facing bathroom door/lav.
  - Maintain ADA clearance from side wall shower and lav.
  - Replace existing toilet with new accessible Kohler Elliston Complete toilet Elongated bowl model #12767-0. Include new ss water supply line and ¼ turn angle stop.
  - Replace existing shower with new accessible shower Freedom 5pc 32-62 with water retention package includes (curtain rod shower curtain weight 33 x grab bars and reversible folding seat, mixing valve and hand-held shower package) ADA/Special Needs modifying drain or supply plumbing as needed.
  - Install 12x24 porcelain tile Della Torre Belmont multi-color with 1/8" un-sanded grout with sealer (Agency to select color on floor of bathroom) and 6" wall base from the same tile and same tile under cabinet toe kicks, if applicable.
  - Replace kitchen cabinets that separate the kitchen and the dining room. Replace all kitchen cabinets upper and lower, except the upper cabinets between kitchen and dining room.
  - Install new lower cabinets between the kitchen and dining room .5ft from the lower cabinets on the east wall where the stove is located.
  - Maintain 5ft clearance between the cabinets and bull nose between the cabinets as referenced above.

- Remove the existing pantry cabinets, trim, walls and living room. Shelves as needed for the installation of the existing refrigerator.
- Move/cut and frame walls to accommodate the existing refrigerator.
- Frame and finish walls as needed in living room and refrigerator cavity.
- Relocate duplex receptacle towards the front of the refrigerator wall for accessibility.
- Install new duplex receptacle on the new cabinet wall facing the dining room.
- Install switches for the range hood and light in the front of the new cabinet meeting ADA requirements.
- Install  $\frac{3}{4}$  granite countertops color to be golden garnet with 1 1/2" bullnose min. construction grade granite with 6" backsplash all granite to be caulked with matching caulk and sealed.
- Install standard countertop size except on the cabinet between the kit and the dining room it will be approx. 32" island counter top bull nose on all sides except the wall side.
- Install new ss kitchen sink 33" x 22" ADA Ellis 6" depth top mount Double bowl sink 18gauge.
- Kitchen cabinets to have two accessible work stations and one accessible kitchen sink roll under.
- One work station to be located on the cabinet between the dining room and kitchen approx. 40" wide, and the other kitchen work station to be on the south wall between the refrigerator wall and the east stove wall cabinets approx 18" deep and 40' wide.
- Relocate the light switches from the kitchen wall being removed to the refrigerator wall facing the living area to the west as close to the front of the refrigerator cavity wall.
- Replace existing kitchen cabinets with Oak cabinets with two coats of semi-gloss pre-catalyzed lacquer meeting ADA requirements.
- Install new pre-hung 36" hollow core wood slab entry door to bathroom with new Kwikset lever privacy lock.

- **SEE PAGES 4-7 OF ADDENDUM FOR SKETCHES OF ADA WORK AND BATHROOM DETAILS.**

All other requirements of this IFB remain unchanged. Thank you for your interest in doing business with Fresno Housing and we look forward to receiving a bid from your firm.

**Marian Mikhael**

Acting Procurement Analyst

[MMikhael@fresnohousing.org](mailto:MMikhael@fresnohousing.org)

**Fresno Housing**

1331 Fulton Street

Fresno, California 93721

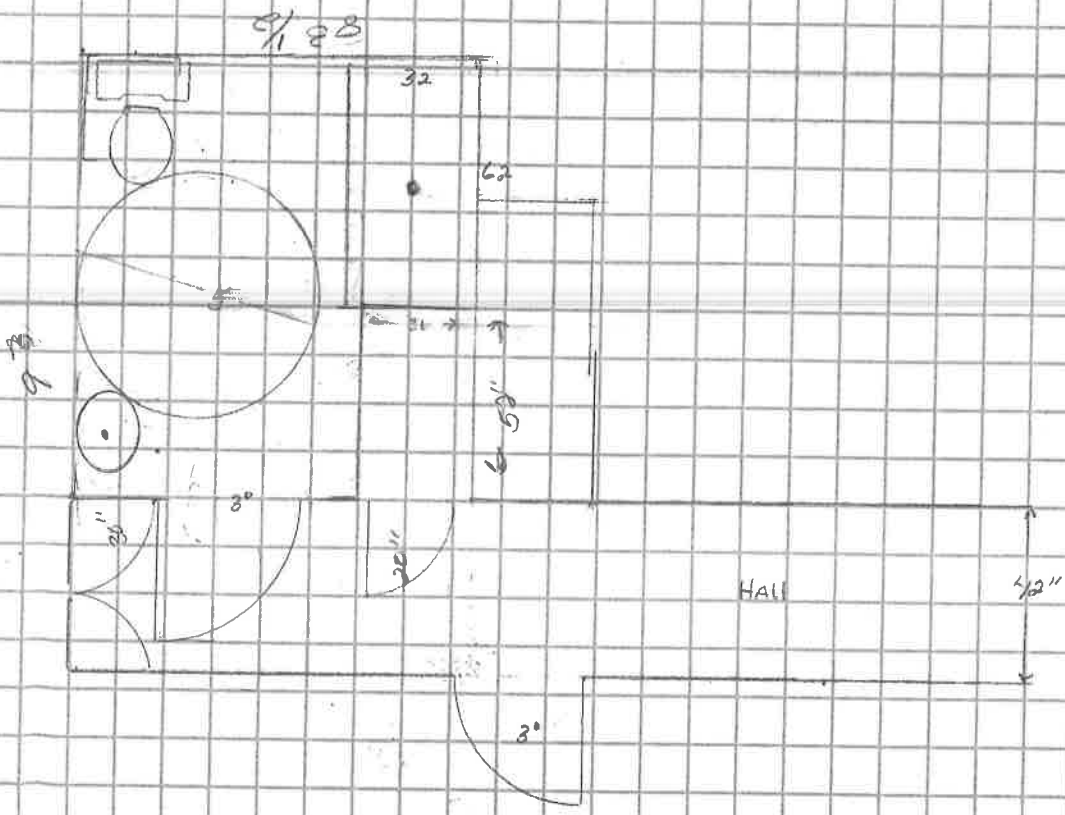
(559)612-6621

(800) 735-2929 TTY

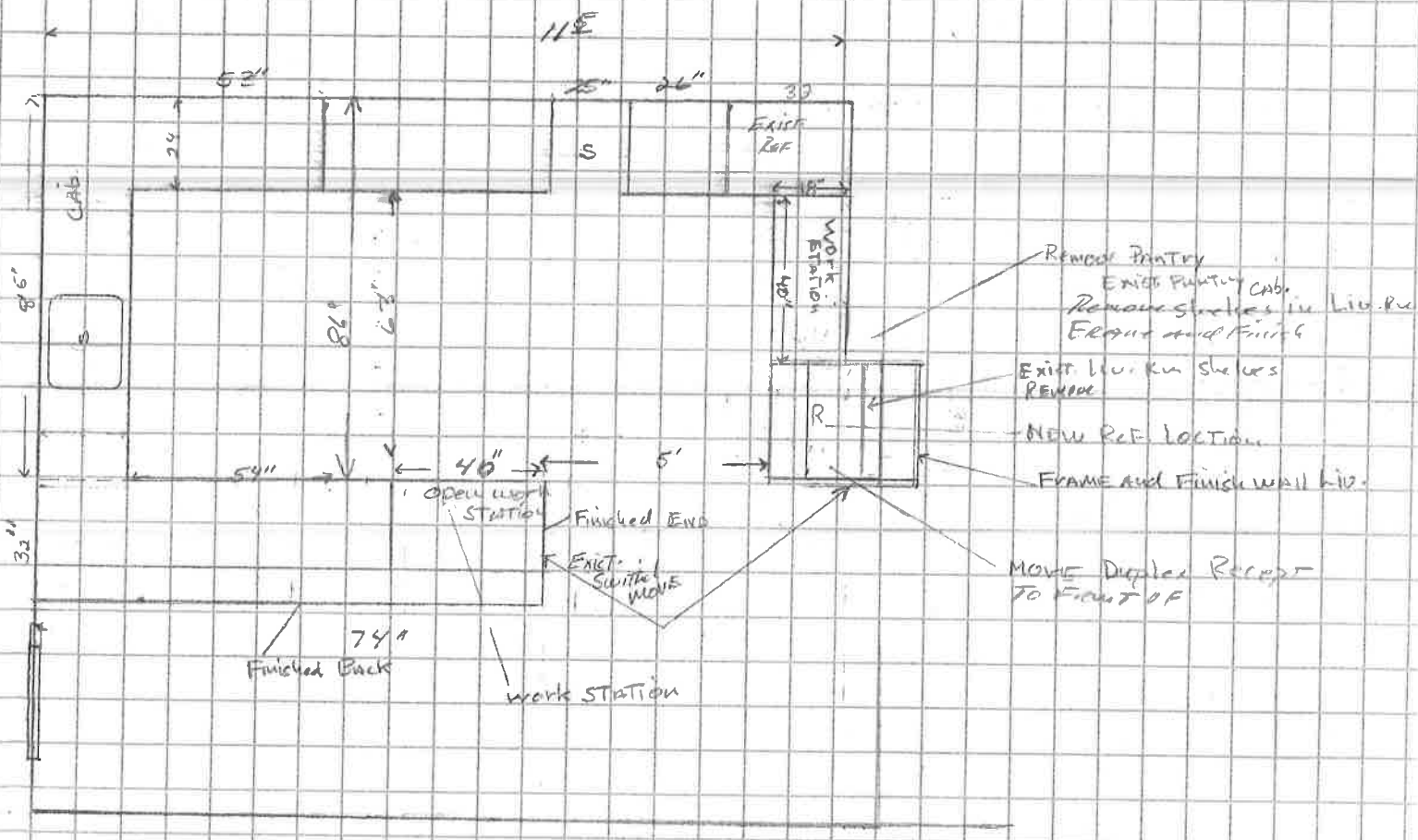
[www.fresnohousing.org](http://www.fresnohousing.org)

*Vibrant Communities. Quality Housing. Engaged Residents.*

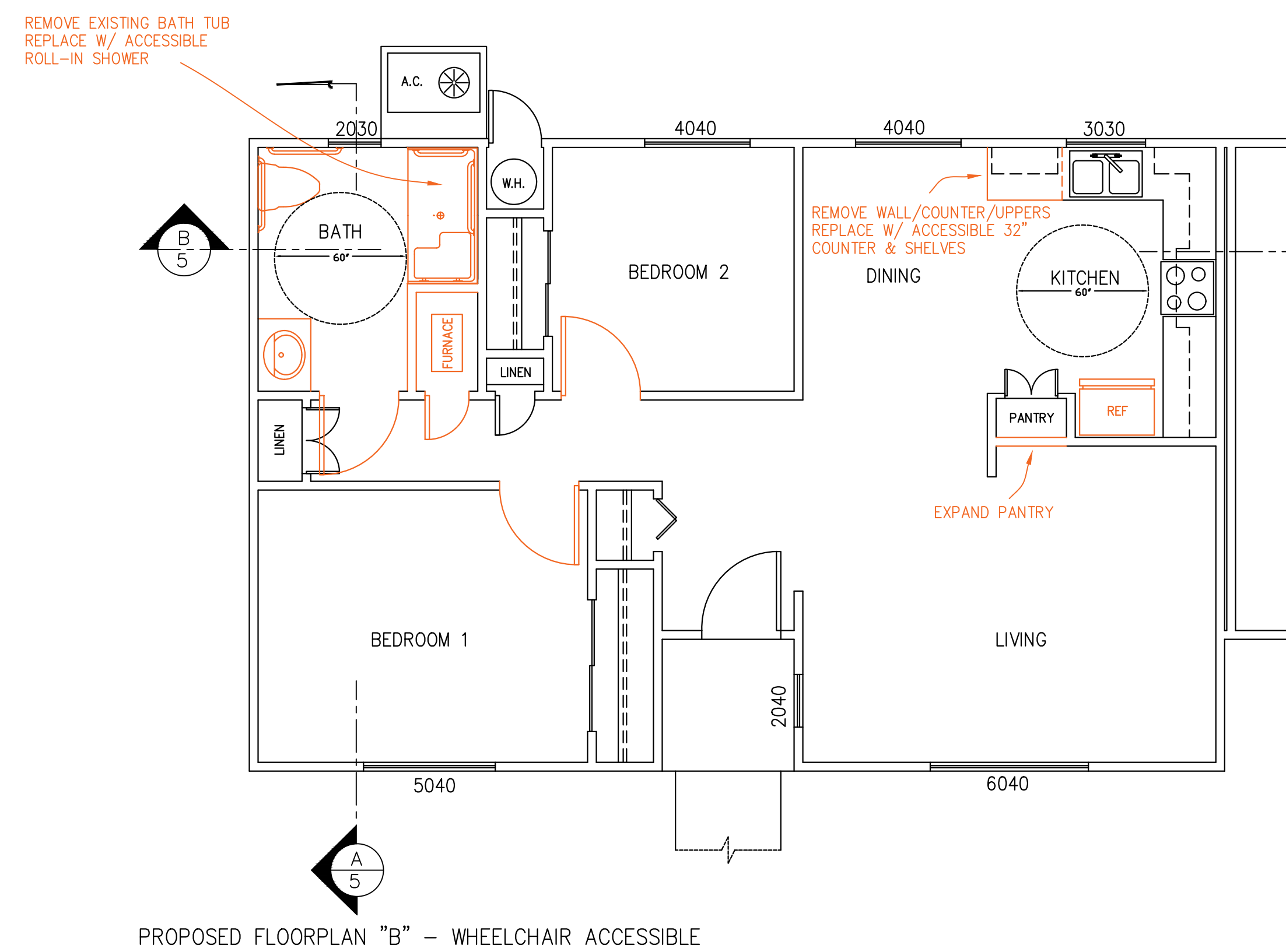
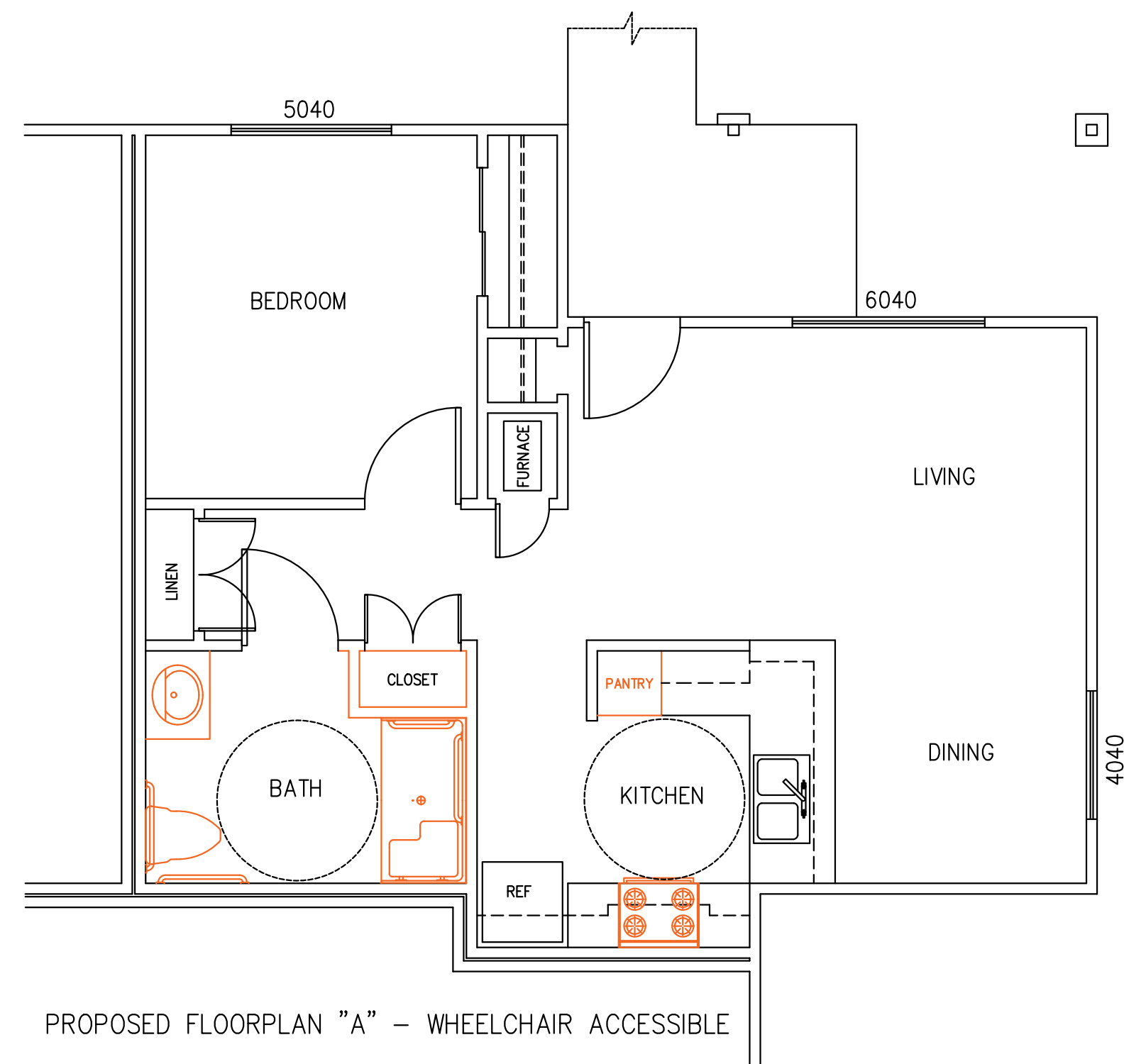
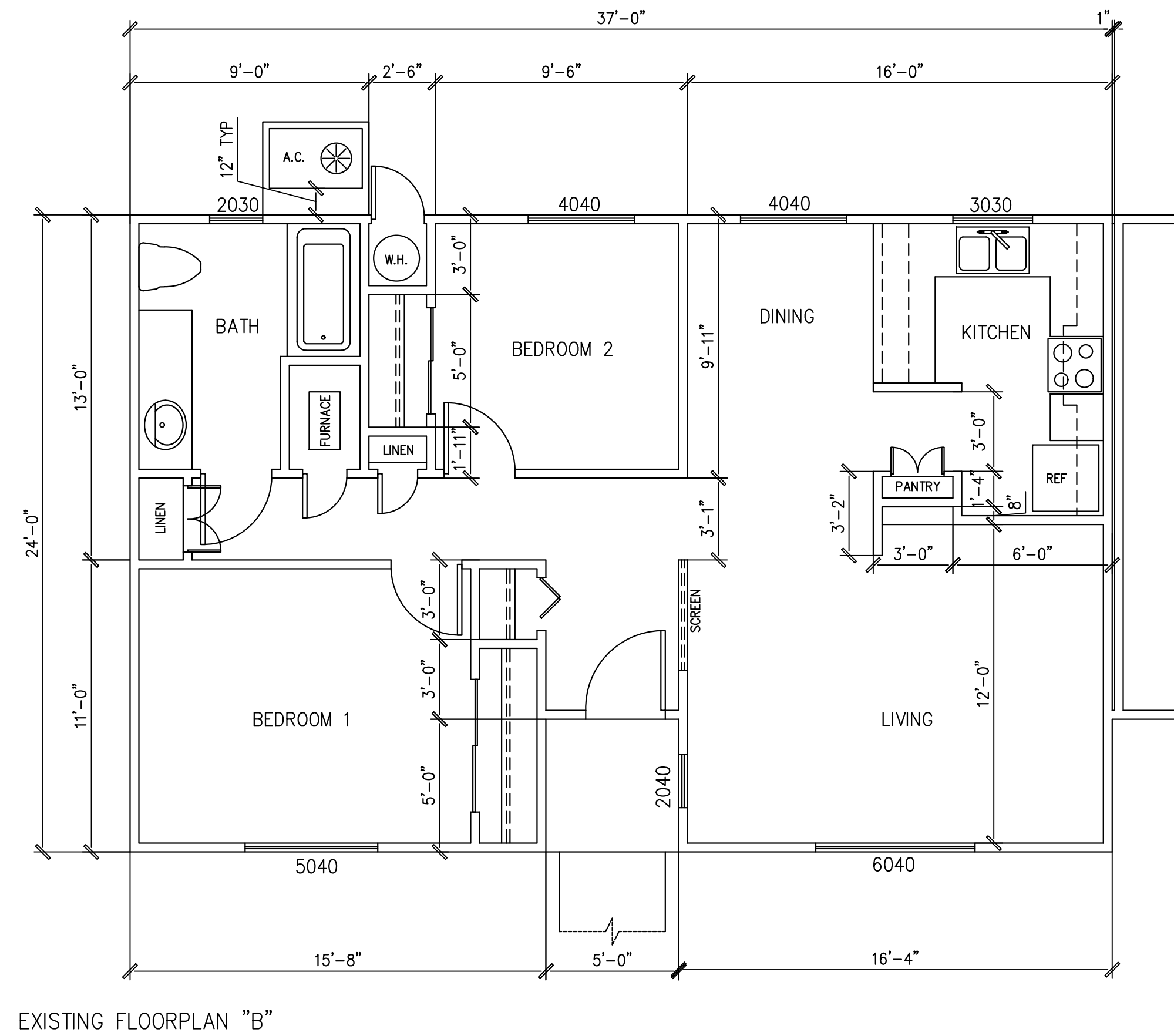
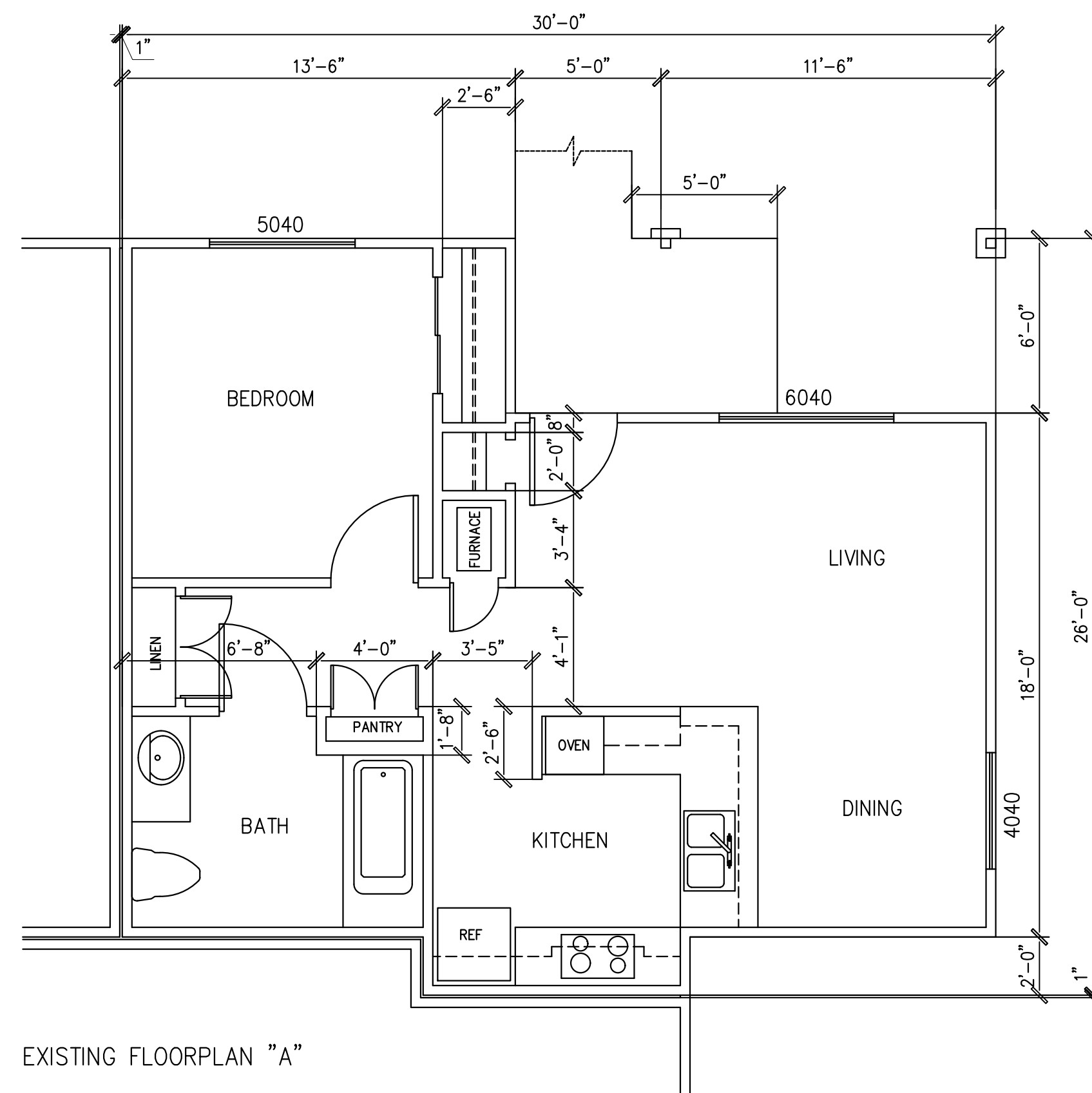
WEDGEWOOD COMMONS  
HICBATH ROOM DETAIL



WEDBWOOD COMMONS  
KIT. REHAB DETAIL



- REMOVE PANTRY
- EXIST. PANTRY CAB.
- REMOVE SHELVES IN LIB. REFRIG. and FINISH
- EXIST. LIB. REFRIG. SHELVES REMOVE
- NEW RCF LOCATION
- FRAME and FINISH WALL L12
- MOME Duplex RECEPT TO FRONT OF



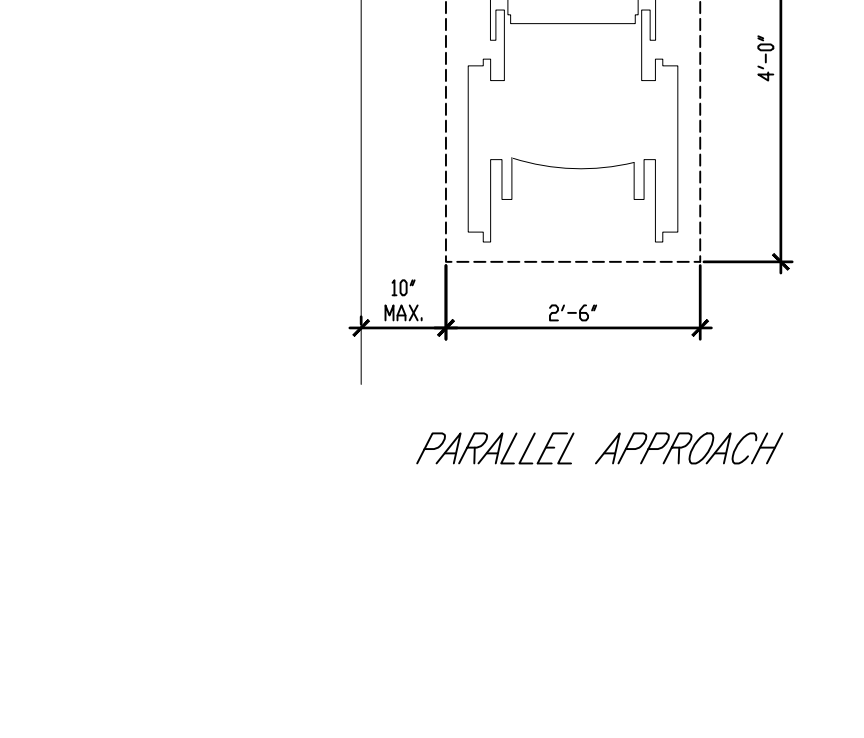
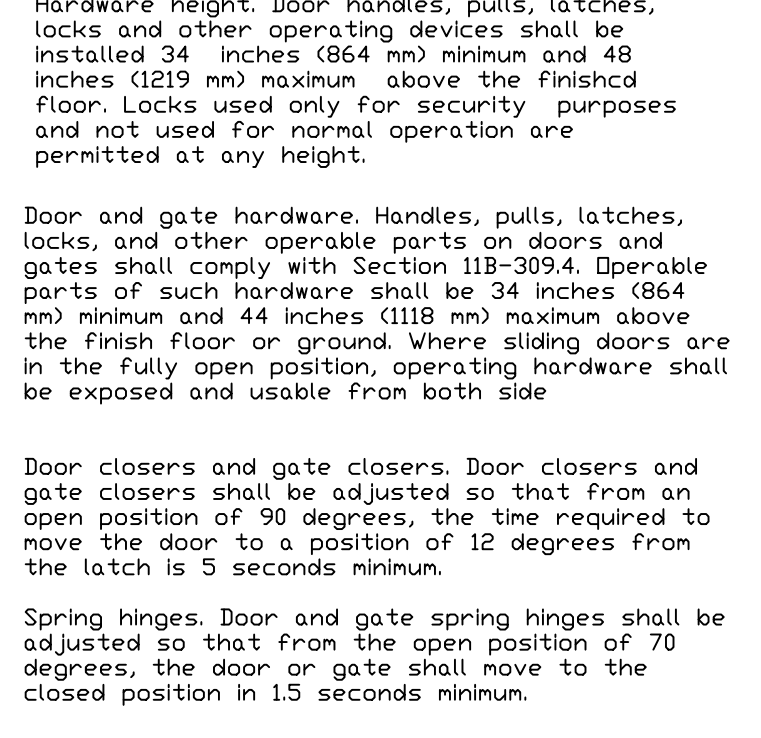
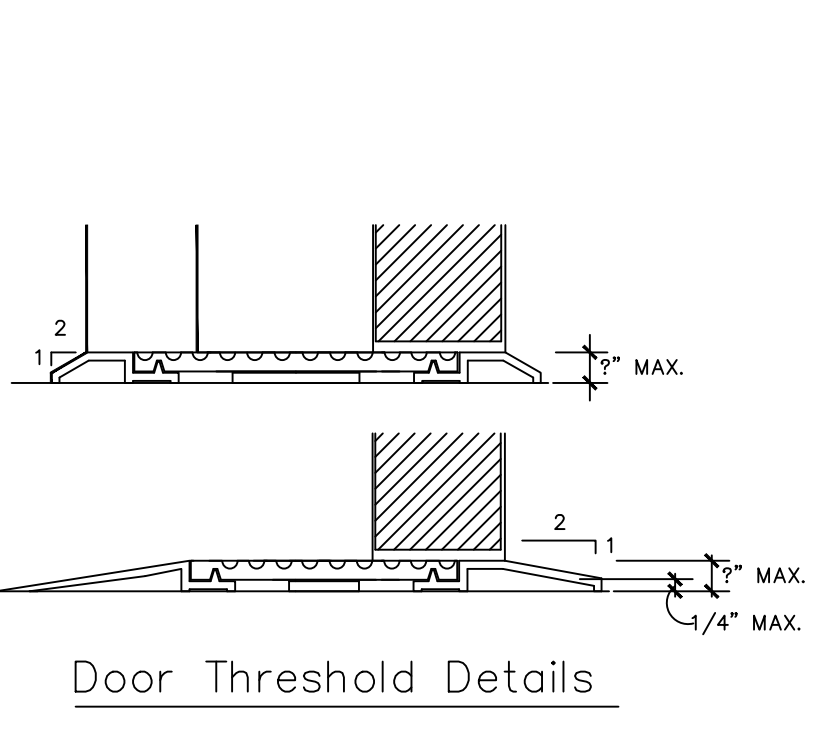
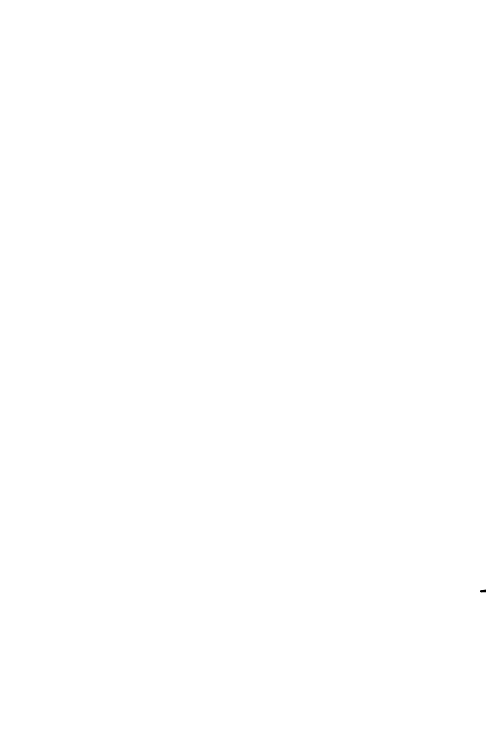
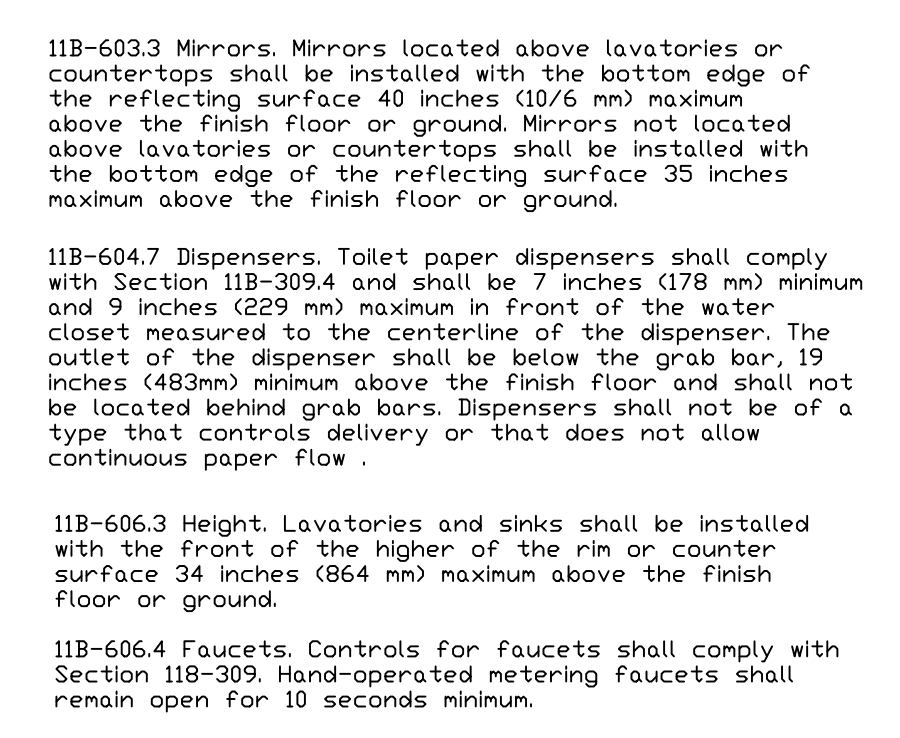
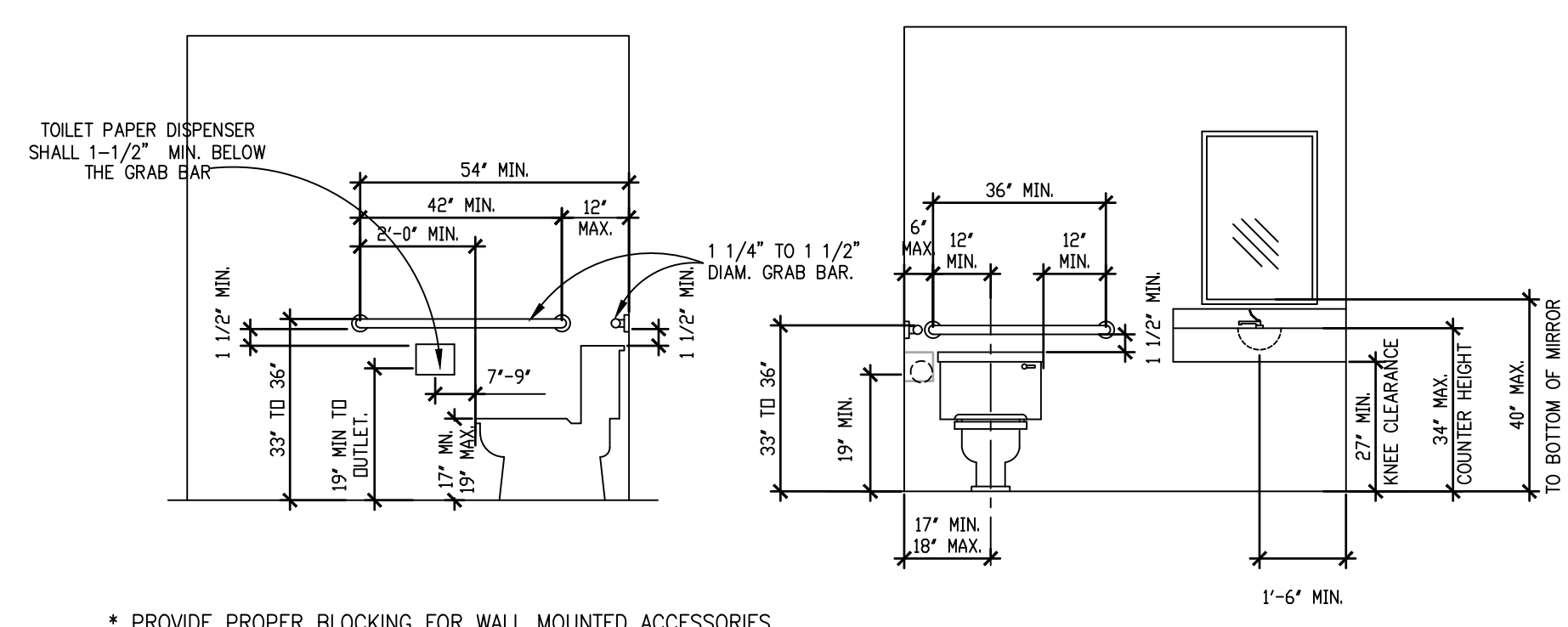
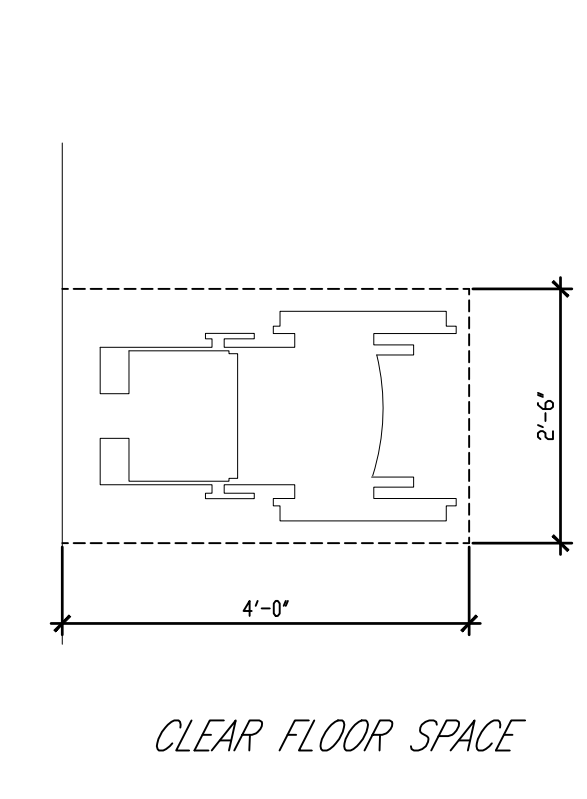
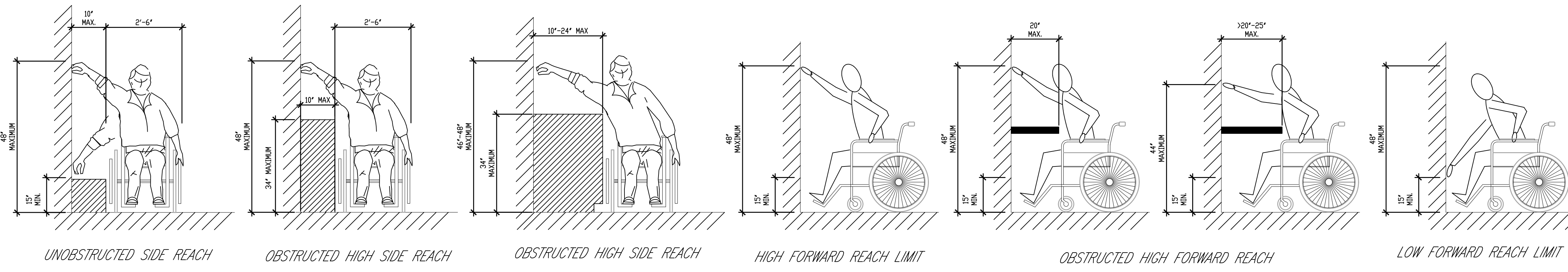
# Floorplan

SCALE: 1/4" = 1'-0"

Gary A. Rogers - Architect  
 1816 HOWARD RD - SUITE #8  
 MADERA, CALIFORNIA 93637 OFFICE: (559) 674-6599  
 FAX: (559) 674-6599  
 PLANNING \* DESIGNING \* CONSTRUCTION PROBLEM SOLVING

Elderly Development - Fresno Housing Authority  
 2415 5th St  
 Sanger, CA 93657

JOB NO.:  
 DRAWN BY:  
 SHEET NO.:  
 2  
 OF SHEETS  
 DATE:



- \* PROVIDE PROPER BLOCKING FOR WALL MOUNTED ACCESSORIES
- \*\* GRAB BARS, FASTENERS & MOUNTING DEVICES SHALL BE DESIGNED FOR 250 LB. LOAD
- \*\*\* WATER CLOSET SEAT SHALL BE AT LEAST 17 INCHES AND NOT MORE THAN 19 INCHES ABOVE THE FLOOR.

**11B-603.3 Mirrors.** Mirrors located above lavatories or countertops shall be installed with the bottom edge of the reflecting surface 40 inches (1016 mm) maximum above the finish floor or ground. Mirrors not located above lavatories or countertops shall be installed with the bottom edge of the reflecting surface 35 inches maximum above the finish floor or ground.

**11B-604.7 Dispensers.** Toilet paper dispensers shall comply with Section 11B-309.4 and shall be 7 inches (178 mm) minimum and 9 inches (229 mm) maximum in front of the water closet measured to the centerline of the dispenser. The outlet of the dispenser shall be below the grab bar, 19 inches (483mm) minimum above the finish floor and shall not be located behind grab bars. Dispensers shall not be of a type that controls delivery or that does not allow continuous paper flow.

**11B-606.3 Height Lavatories and sinks** shall be installed with the front of the higher of the rim or counter surface 34 inches (864 mm) maximum above the finish floor or ground.

**11B-606.4 Faucets.** Controls for faucets shall comply with Section 11B-309. Hand-operated metering faucets shall remain open for 10 seconds minimum.

**11B-606.5 Exposed pipes and surfaces.** Water supply and drain pipes under lavatories and sinks shall be insulated or otherwise configured to protect against contact. There shall be no sharp or abrasive surfaces under lavatories and sinks.

Hardware height. Door handles, pulls, latches, locks and other operable devices shall be installed 34 inches (864 mm) minimum and 48 inches (1219 mm) maximum above the finished floor. Locks used only for security purposes and not used for normal operation are permitted at any height.

Door and gate hardware. Handles, pulls, latches, locks and other operable parts on doors and gates shall comply with Section 11B-309.4. Operable parts of such hardware shall be 34 inches (864 mm) minimum and 44 inches (1118 mm) maximum above the finish floor or ground. Where sliding doors are in the fully open position, operating hardware shall be exposed and usable from both side.

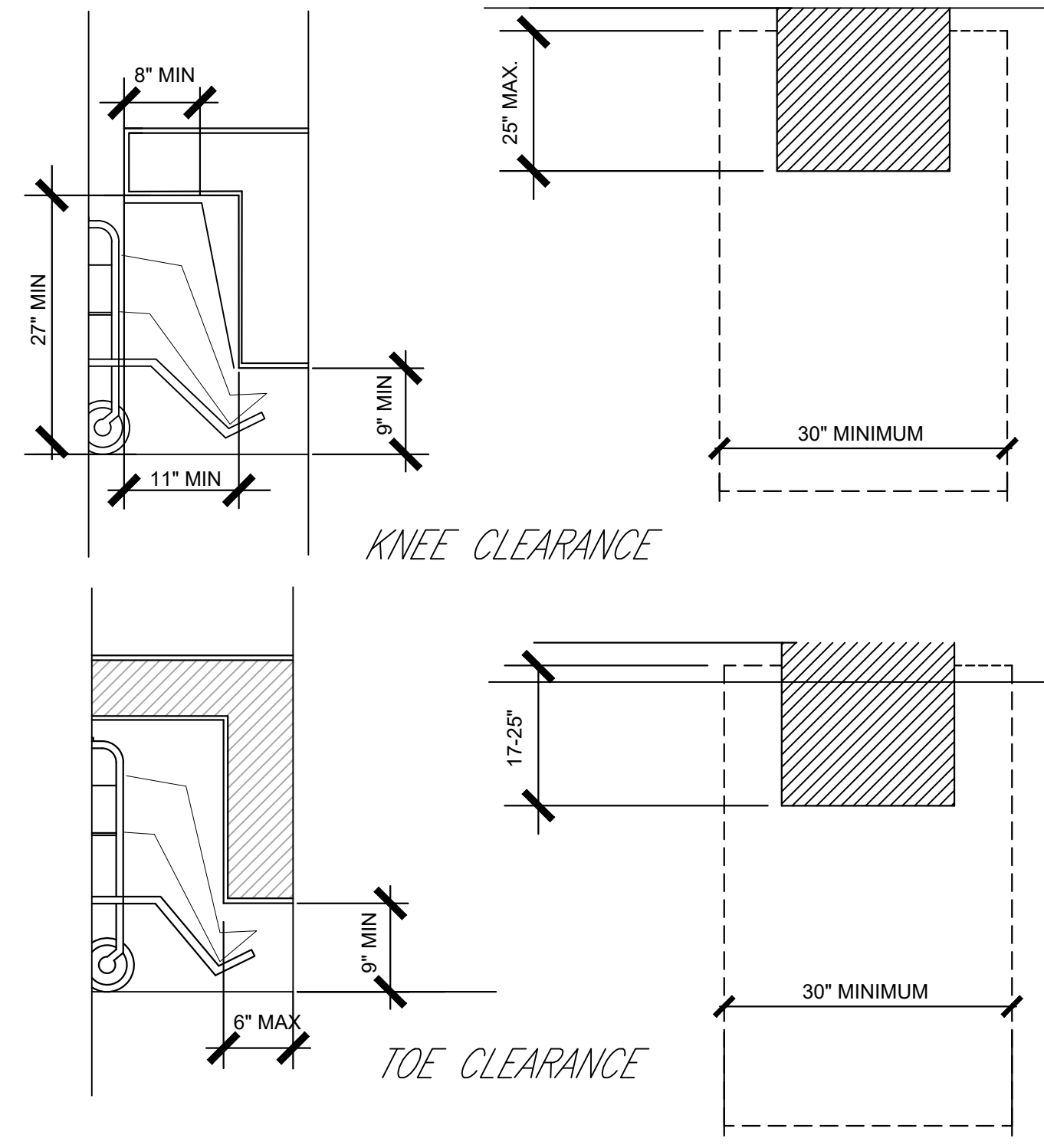
Door closers and gate closers. Door closers and gate closers shall be adjusted so that from an open position of 90 degrees, the time required to move the door to a position of 12 degrees from the latch is 5 seconds minimum.

Spring hinges. Door and gate spring hinges shall be adjusted so that from the open position of 70 degrees, the door or gate shall move to the closed position in 1.5 seconds minimum.

Operation. Operable parts shall be operable with one hand and shall not require tight grasping, pinching, or twisting of the wrist. The force required to activate operable parts shall be 5 pounds maximum.

Door Threshold Details

Sink Accessibility



**11B-306 KNEE AND TOE CLEARANCE**

**11B-306.1 GENERAL**  
WHERE SPACE BENEATH AN ELEMENT IS INCLUDED AS PART OF CLEAR FLOOR OR GROUND SPACE OR TURNING SPACE THE SPACE SHALL COMPLY WITH SECTION 11B-306. ADDITIONAL SPACE SHALL NOT BE PROHIBITED BENEATH AN ELEMENT BUT SHALL BE CONSIDERED AS PART OF THE CLEAR FLOOR OR GROUND FLOOR OR TURNING SPACE.

**11B-306.2.1 GENERAL**  
SPACE UNDER AN ELEMENT BETWEEN THE FINISH FLOOR OR GROUND AND 9 INCHES (229 mm) ABOVE THE FINISH FLOOR OR GROUND SHALL BE CONSIDERED TOE CLEARANCE.

**11B-306.2.2 MAXIMUM DEPTH**  
TOE CLEARANCE SHALL EXTEND 25 INCHES (635 mm) MAXIMUM UNDER AN ELEMENT.

**11B-306.2.3 MINIMUM REQUIRED DEPTH**  
WHERE TOE CLEARANCE IS REQUIRED AT AN ELEMENT AS PART OF A CLEAR FLOOR SPACE, THE TOE CLEARANCE SHALL EXTEND 17 INCHES (432 mm) MINIMUM UNDER THE ELEMENT.

**11B-306.2.4 ADDITIONAL CLEARANCE**  
SPACE EXTENDING GREATER THAN 6 INCHES BEYOND THE AVAILABLE KNEE CLEARANCE AT 9 INCHES ABOVE THE FINISH FLOOR OR GROUND SHALL NOT BE CONSIDERED TOE CLEARANCE.

**11B-306.2.5 WIDTH**  
TOE CLEARANCE SHALL BE 30 INCHES WIDE MINIMUM

**11B-306.3 KNEE CLEARANCE**

**11B-306.3.1 GENERAL**  
SPACE UNDER AN ELEMENT BETWEEN 9 INCHES (229mm) AN 27 INCHES (686mm) ABOVE THE FINISH FLOOR OR GROUND SHALL BE CONSIDERED KNEE CLEARANCE AND SHALL COMPLY WITH SECTION 11B-306.3

**11B-306.3.2 MAXIMUM DEPTH**  
KNEE CLEARANCE SHALL EXTEND 25 INCHES (635mm) MAXIMUM UNDER AN ELEMENT AT 9 INCHES (229mm) ABOVE THE FINISH FLOOR OR GROUND.

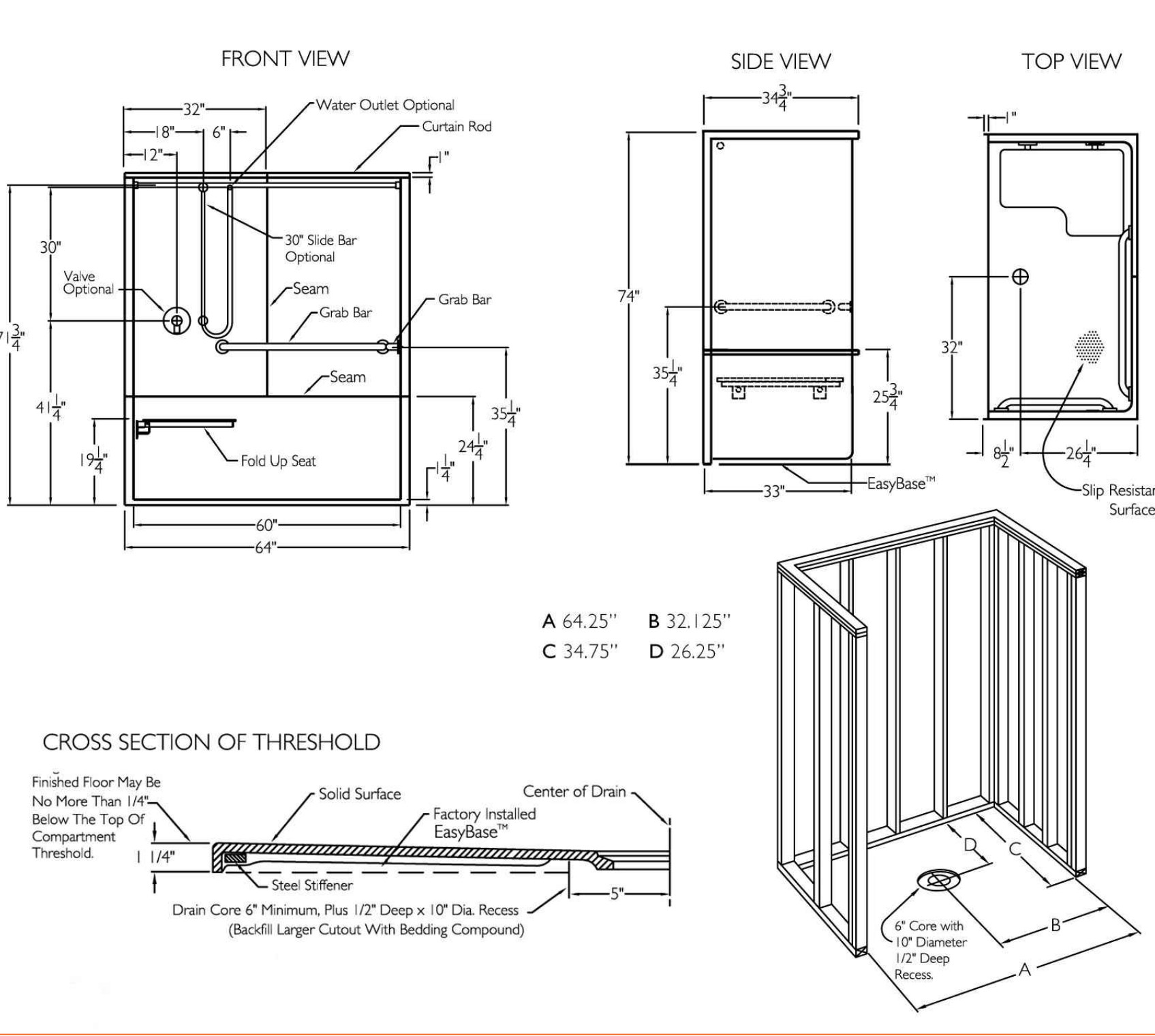
**11B-306.3.3 MINIMUM REQUIRED DEPTH**  
WHERE KNEE CLEARANCE IS REQUIRED UNDER AN ELEMENT AS PART OF A CLEAR FLOOR SPACE, THE KNEE CLEARANCE SHALL BE 11 INCHES (279mm) DEEP MINIMUM AT 9 INCHES (229mm) ABOVE FINISH FLOOR OR GROUND AND 8 INCHES (209mm) DEEP MINIMUM AT 27 INCHES (686mm) ABOVE FINISH FLOOR OR GROUND

**EXCEPTIONS:**  
AT DINING AND WORK SURFACES REQUIRED TO BE ACCESSIBLE, KNEE CLEARANCE SHALL EXTEND 19 INCHES (483mm) DEEP MINIMUM AT 27 INCHES (686mm) ABOVE FINISH FLOOR OR GROUND

**11B-306.3.5 WIDTH**  
KNEE CLEARANCE SHALL BE 30 INCHES (762mm) WIDE MINIMUM.

Exposed pipes and surfaces. Water supply and drain pipes under lavatories and sinks shall be insulated or otherwise configured to protect against contact. There shall be no sharp or abrasive surfaces under lavatories and sinks.

ADA COMPLIANT ROLL-IN SHOWER DIMENSIONS



- A 64.25"
- B 32.125"
- C 34.75"
- D 26.25"

ADA Detail Notes

SCALE: 1/4" = 1'-0"

Gary A. Rogers - Architect  
1816 HOWARD RD - SUITE #8  
MADERA, CALIFORNIA 93637  
OFFICE: (559) 674-6598  
PLANNING \* DESIGNING \* CONSTRUCTION PROBLEM SOLVING

Elderly Development - Fresno Housing Authority  
2415 5th St  
Sanger, CA 93657

JOB NO.:	
DRAWN BY:	
SHEET NO.:	3
OF SHEETS	
DATE:	