

Invitation For Bids (IFB)
FOR
General Contractor Services

Solicitation NO.2022-CON-B05

ADDENDUM 3

For
Cayce Utility Phase 1b



METROPOLITAN DEVELOPMENT AND HOUSING AGENCY
Nashville, Tennessee

August 23, 2022

Addendum 3

Solicitation NO.2022-CON-B05

Cayce Utility Phase 1b

Questions from Housing Agency Marketplace:

- Q1.** Regarding the above project, could you please provide a link to the video(s) available for the CIPP lining scope on this project when you get a chance? Per the CIPP spec section 33 01 40, there are existing videos available upon request.
- A1.** See video link provided in Addendum #2.
- Q2.** We have a question regarding the CIPP scope on this project. Plan Sheet C2-08 (attached for reference) has two notes on the profile view about "Approximate blind connection location. Contractor to line with CIPP liner." Do these laterals/blind connections also need to be CIPP lined in addition to the main or is the 36" main the only thing that needs to be CIPP lined? If the laterals need to also be CIPP lined, how far up the lateral do they need to be lined and what are the lateral diameters? Is this a full wrap (on the main)? How will these lateral liners be paid? Could you please provide a spec for this scope?
- A2.** There are two connections into this pipe. These laterals do not need to be lined as well. The contractor will line the 36" pipe and have to cut out the liner to maintain flow from these two connections. The specs for the liner are provided in the spec book – Sections 33 01 30, 33 35 20, 33 01 51, 33 01 40.
- Q3.** There is a spec section for grinder pump. Is there a pump on this project?
- A3.** No there is not a pump on this project. That spec section is from Metro Water Standard Specifications. We included the entire spec book from MWS as part of our specs. Not all sections will be applicable to this project.
- Q4.** The CIPP pipe liner calls for grouting/sealing joints prior to lining. Since this is a long 36" pipe, can we do a pre-liner instead of grouting/sealing, so we don't have to send a person into this pipe.
- A4.** We are looking into this option with Metro Nashville Stormwater Division.
- Q5.** CIPP Bid Item: Is this line being lined a combined line (sewer and storm), or just storm? If combined, do you have flow information for sizing a bypass system, while the CIPP work is being completed?
- A5.** This pipe is storm only.
- Q6.** Drawing C6-02, 03 and 04, what is the significance of these drawings, as no information is being provided, as shown on Drawing C6-01?
- A6.** Sheets C6-02, C6-03 and C6-04 have been revised and were provided in Addendum #2.

- Q7.** Item 795-06.04 – 100' of 2" PVC water line. I can't locate this. Is this the service pipe for the relocations?
- A7.** We have removed this bid item; it was for the water service line connections. We have lumped this into the line item for Reconnect Water Services.
- Q8.** Item 795-06.05 – the 8x6 tee used to reconnect the 6" water line to the 8" main is what I see, unless you are cutting pipe. Does the tee go here or under the DI fittings item?
- A8.** All tees and bends will be paid for under the DI fittings line item unless it is specified to be paid for as part of another item such as fire hydrant assembly or connect to existing hydrant.
- Q9.** Item 795-08.05 – calls for 2 ea. 6" gate valves. The two on the plans are for hydrants. There is a note that says the gate valve is included in the pay item for the hydrant. Possibly the valve for relocating the existing hydrant goes here. Where are the two 6" gate valves located that makes up this bid item?
- A9.** Quantities and footnotes have been updated. Item number 795-11.02 (Fire Hydrant Assembly) includes the hydrant, valve, 8x6 tee and 6" line from the main to the hydrant. Item 920-13.04 (Connect to existing hydrant) includes 6" valve, 8x6 tee, and 6" fire line from main to hydrant. The 6" gate valve item number was left in with a quantity of 1 in case a need comes up for it to be used. If it is not needed, it will not be billed for.
- Q10.** Reconnect water services. There is no pay item number and there is no detail or size. Are these 2" meters or ¾" services? I would think we just need to quote the corporation stop and connect at the box?
- A10.** We are not sure about the sizes for these services. The bid item includes the cost of the new service line from the main to the meter and the connection at the main line. Contractor shall assume these lines are 1" or less for the purposes of their bid. If any service lines are larger than 1" then a change order can be provided for the increased size of service line and connection.
- Q11.** 8x6 waterline reducer. There is not pay item number.
- A11.** Pay item has been added to this item.
- Q12.** APCO 400 Air Release Valve. There is no pay item number. Also, a model 400 is strictly a sewage valve, not a water valve. Should this be a APCO 200A?
- A12.** Updated to APCO 200A. Pay item has been added.
- Q13.** Item 797-05.01 – Connect to the existing hydrant. Will the tee go here or under the DI fittings?
- A13.** Tee is part of the connect to existing hydrant line item. Footnote has been updated to reflect this.
- Q14.** Item 797-05.51 – bid form calls for 35' of 8" DIP sewer pipe but there are two runs in the pipe table that total 56'.
- A14.** Quantity has been updated to 60 LF.

- Q15.** For the Concrete Turn Down Slab bid item. It is referenced to use the details on sheet C8-02C and Sheet C5-03 for locations. on Sheet C8-02C the only details are for detectable warnings at curb returns. These details correlate with keynote A in the legend on sheet C5-03. This appears to be a separate item that the length of turn down slab on the plans. Will you please provide the details for this bid item or specify how these relate?
- A15.** Sheet C5-03 has been revised to denote a curb at the back of the sidewalk instead of a turndown. The detail has been added to Sheet C8-02 to show the curb at the back of the sidewalk. Curb heights can be seen on the cross-section drawings. Please continue to utilize Item #920-10.01 for this item measured in LF. The average height of this curb above grade is 6" on the northern section that is 70 LF and average of 11" on the southern section is that 70 LF. So, the bid item should be based on 140 LF of curb with an average height above grade of 8.5".

Clarifications:

MDHA hereby revises the documents listed below.

1. The project specification section 012200 – Unit Prices has been updated as attached. This replaces the original specification section 012200.
2. Attached is an **updated Bid Form** in excel format. Please **populate this document** as your official bid submittal.
3. Revised Plan Sheets Attached:
 - a. C3-01 Sanitary Sewer P&P
 - b. C4-02 Water P&P
 - c. C5-03 Roadway P&P – S. 7th Street
 - d. C8-02C Roadway Details
4. Must acknowledge all Addendums in your bid submission

SECTION 012200 - UNIT PRICES

PART 1 - GENERAL

1.1 SUMMARY

- A. Section includes administrative and procedural requirements for unit prices.
- B. Related Requirements:
 - 1. Section 012600 "Contract Modification Procedures" for procedures for submitting and handling Change Orders.

1.2 DEFINITIONS

- A. Unit price is an amount incorporated in the Agreement, applicable during the duration of the Work as a price per unit of measurement for materials, equipment, or services, or a portion of the Work, added to or deducted from the Contract Sum by appropriate modification, if the scope of Work or estimated quantities of Work required by the Contract Documents are increased or decreased.

1.3 PROCEDURES

- A. Unit prices include all necessary material, plus cost for delivery, installation, insurance, applicable taxes, overhead, and profit.
- B. Measurement and Payment: See individual Specification Sections for work that requires establishment of unit prices. Methods of measurement and payment for unit prices are specified in those Sections.
- C. Owner reserves the right to reject Contractor's measurement of work-in-place that involves use of established unit prices and to have this work measured, at Owner's expense, by an independent surveyor acceptable to Contractor.
- D. List of Unit Prices: A schedule of unit prices is included in Part 3. Specification Sections referenced in the schedule contain requirements for materials described under each unit price.

PART 2 - PRODUCTS (Not Used)

PART 3 - EXECUTION

3.1 SCHEDULE OF UNIT PRICES

BASE BID				
Note		Item Description	Unit	Quantity
1	105-01	CONSTRUCTION STAKES, LINES, GRADES	LS	1
2	202-02.01	REMOVAL OF PIPE (42" STORM)	L.F.	1073
2	202-02.02	REMOVAL OF PIPE (12" STORM)	L.F.	125
2	202-02.03	REMOVAL OF PIPE (18" STORM)	L.F.	537
2	202-02.21	REMOVAL OF PIPE (6" WATER)	L.F.	1580
2	202-02.22	REMOVAL OF PIPE (8" WATER)	L.F.	46
3	202-03	REMOVAL OF RIGID PAVEMENT, SIDEWALK, ETC.	S.Y.	770
3	202-03.01	REMOVAL OF ASPHALT PAVEMENT FULL DEPTH	S.Y.	5550
4	202-04.01	REMOVAL OF STRUCTURES (STORM)	EA	16
5	202-08.15	REMOVAL OF CURB AND GUTTER	LF	1800
6	203-01.29	ROCK EXCAVATION	C.Y.	100
7	203-02.01	BORROW EXCAVATION (GRADED SOLID ROCK)	TON	150
8	203-05	UNDERCUTTING	C.Y.	100
	209-03.21	FILTER SOCK (12 INCH)	L.F.	292
	209-08.02	TEMPORARY SILT FENCE (WITH BACKING)	L.F.	1350
	209-40.33	CATCH BASIN PROTECTION (TYPE D)	E.A.	22
9	303-01	MINERAL AGGREGATE, TYPE A BASE, GRADING D	TON	2500
	307-01.08	ASPHALT CONCRETE MIX (PG64-22) (BPMB-HM) GRADING B-M2	TON	700
	402-01	BITUMINOUS MATERIAL FOR PRIME COAT (PC)	TON	9
	403-01	BITUMINOUS MATERIAL FOR TACK COAT (TC)	TON	2
10	407-20.05	SAWCUTTING ASPHALT PAVEMENT	L.F.	700
	411-01.10	ACS MIX (PG64-22) GRADING D	TON	550
	415-01.01	COLD PLANING BITUMINOUS PAVEMENT	TON	50
11	607-02.02	15" RCP CLASS III	LF	260
11	607-03.02	18" RCP CLASS III	LF	74

11	607-05.02	24" RCP CLASS III	LF	227
11	607-07.02	36" RCP CLASS III	LF	347
11	607-10.02	54" RCP CLASS III	LF	700
11	607-11.03	60" RCP CLASS III	LF	360
12	611-01.10	MANHOLES, (60" DIAMETER, 6'-12' DEPTH)	EA	2
12	611-01.11	MANHOLES (96" DIAMETER, 12'-16' DEPTH)	EA	2
12	611-01.12	MANHOLES (108" DIAMETER, 13' DEPTH)	EA	1
12	611-42.02	CATCH BASINS, TYPE 42, > 4' - 8' DEPTH	EA	1
12	611-90.01	CATCH BASINS, (SINGLE INLET (METRO NASHVILLE DR-105), 5' - 9' DEPTH)	EA	5
12	611-90.02	CATCH BASINS, (DOUBLE INLET (METRO NASHVILLE DR-110), 5'-9' DEPTH)	EA	3
12	611-90.03	CATCH BASINS TYPE 12, 4'-8' DEPTH - SINGLE	EA	4
12	611-90.04	CATCH BASINS TYPE 12, 8'-12' DEPTH - SINGLE	EA	2
12	611-90.05	CATCH BASINS TYPE 12, 8'-12' DEPTH - DOUBLE	EA	3
12	611-90.06	CATCH BASINS TYPE 12, 12'-16' DEPTH - SINGLE	EA	2
12	611-90.07	CATCH BASINS TYPE 12, 12'-16' DEPTH - DOUBLE	EA	2
20	920-12	CIPP PIPE LINING (for 36" pipe)	LF	539
13	701-01.01	CONCRETE SIDEWALK (4")	SF	9000
14	701-02	RESIDENTIAL CONCRETE DRIVEWAY (METRO ST-322)	SF	360
15	701-02.03	CONCRETE CURB RAMP	SF	400
16	702-03	CONCRETE COMBINED CURB AND GUTTER	CY	100
17	712-01.50	MAINTENANCE OF TRAFFIC	LS	1
	713-16.20	SIGNS (REGULATORY SIGNS WITH POST AND FOOTER)	EA	5
	716-02.05	PLASTIC PAVEMENT MARKING (STOP LINE)	LF	250
	716-13.01	SPRAY THERMO PAVEMENT MARKING (60 MIL) (4 IN LINE)	LF	1300
	717-01	MOBILIZATION	LS	1
11	795-01.05	FURNISH AND INSTALL 8" DIP RESTRAINED JOINT WATER LINE	LF	1630
	795-06.04	RECONNECT TO 6" WATER LINE	EA	1

	795-06.05	RECONNECT TO 8" WATER LINE	EA	2
	795-08.04	6" GATE VALVE ASSEMBLY	EA	1
	795-08.05	8" GATE VALVE ASSEMBLY	EA	4
	795-10.11	REMOVE WATER VALVE	E.A.	8
18	795-11.02	FIRE HYDRANT ASSEMBLY	EA	1
	795-12.01	REMOVE FIRE HYDRANT	E.A.	1
	795-13.01	DI FITTINGS	LB	750
21	795-09.51	RECONNECT WATER SERVICE LINES	EA	7
	920-11.04	8" X 6" WATERLINE REDUCER	E.A.	1
23	920-12.04	APCO 200A AIR RELEASE VALVE	E.A.	1
22	920-13.04	CONNECT TO EXISTING FIRE HYDRANT	EA	1
11	797-05.01	8" DI GRAVITY SEWER PIPE	LF	60
11	797-05.51	8" PVC GRAVITY SEWER PIPE	LF	400
12	797-07.02	48" SANITARY SEWER MANHOLES 4'-6' DEPTH	EA	1
12	797-07.05	48" SANITARY SEWER MANHOLES 10'-12' DEPTH	EA	2
4	797-07.80	REMOVE SEWER STRUCTURES	E.A.	2
3	797-11.35	REMOVE EXISTING SEWER 8IN - 14IN	L.F.	330
	920-11	CUT, CAP, AND ABANDON SANITARY SEWER LINE IN PLACE	L.F.	137
	920-14.04	REPLACE MANHOLE IN PLACE	E.A.	1
	801-01	SEEDING (WITH MULCH)	UNIT	5
	802-05.01	TEMPORARY TREE PROTECTION	L.F.	74
19	920-10.01	CONCRETE TURN DOWN SLAB (0.5' WIDTH)	LF	140

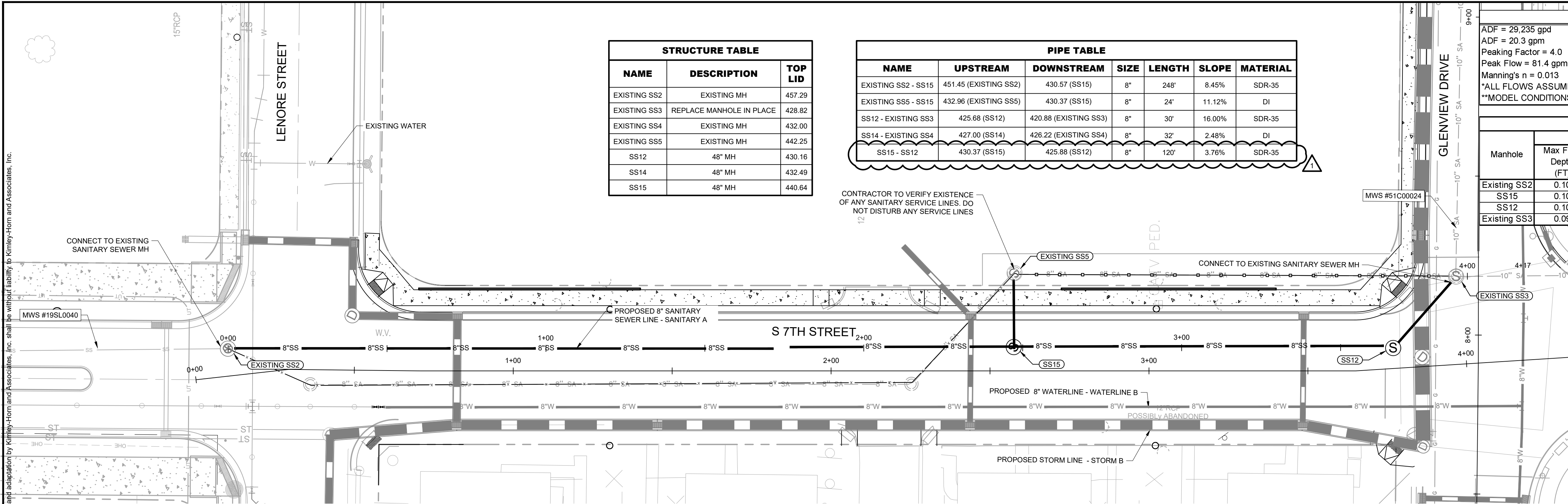
NOTE: Any item, material, equipment, labor, or operation required to complete the work outlined in the Construction Plans that is not listed as a bid item above shall be considered incidental and shall be incorporated into other bid items.

FOOTNOTES	
1	Includes all construction staking and layout necessary for the project. Also includes Metro Water Services required As-built and project close out information.
2	Removal of pipe line items include the excavation to dig down to the pipe and the removal and disposal of the pipes.
3	Includes full depth removal of asphalt or concrete and base stone down to subgrade
4	Removal of structures shall include required excavation, removal and disposal of the structures.
5	Includes full depth removal of existing curb or curb and gutter and base stone down to subgrade.
6	This unit price shall apply to any solid rock excavation that is deemed necessary for installation of utility lines associated with this project. Based on the Geotechnical Report we do not anticipate any large-scale rock formations within the existing roadways. Should we encounter rock that needs to be removed to achieve a depth as indicated on the plans this unit price would apply. Owner and Engineer shall be consulted prior to any rock excavation taking place. Written approval shall be provided before excavation of any solid bedrock.
7	This unit price shall apply when undercutting (203-05) is approved. Borrow Excavation (Graded Solid Rock) will be used to fill back in where poor soils were removed through undercutting. Graded Solid Rock will be used to bring the grade back up to subgrade or bedding grade for utility lines.
8	This unit price shall apply to any excavation below the necessary depth required for pipe bedding or standard excavation required to preform the construction as indicated on the plans. Construction Materials representatives will be on site during excavation and shall be consulted if the contractor believes undercutting is required. This item would consist of additional excavation to remove poor soils and haul off site to an approved and permitted fill site. Owner, Engineer and Material Testing representative shall be consulted prior to any undercutting taking place. Written approval shall be provided before any undercutting occurs.
9	This item shall be used for 8" base stone where full depth asphalt replacement is noted on the plans. All other required stone backfill shall be incidental to pipe installation or other items
10	Includes saw cutting of asphalt and concrete.
11	Pipe installation shall consist of required excavation, bedding material, pipe installation and backfill material up to subgrade. It shall also consist of any trenching, trench boxes or other safety measures required for the installation of the pipe. This item shall also consist of all required testing.
12	Structures shall consist of required excavation, bedding material, structure installation, and backfill material up to subgrade. It shall also consist of any trenching, trench boxes or other safety measures required for the installation of the structure.

13	Concrete sidewalk pay item includes 4" base stone, 4" concrete, expansion and control joints, all prep, labor, materials, formwork, finished associated with the construction of the sidewalk. Refer to Metro Detail No. ST-209 and ST-210 on Sheet C8-02A.
14	Concrete driveway pay items includes 4" base stone, welded wire mesh, concrete, expansion and control joints, all prep, labor, materials, formwork, finished associated with the construction of the sidewalk. Refer to Metro Detail No. ST-322 and ST-323 on Sheet C8-02B.
15	Concrete curb ramp pay item includes 4" base stone, 6" concrete, tactile warning system, expansion and control joints, all prep, labor, materials, formwork, finished associated with the construction of the sidewalk. Refer to Metro Detail No. ST-320, ST-321, ST-329 and ST-330 on Sheet C8-02B and C8-02C.
16	Concrete curb and gutter pay item includes 4" base stone, concrete, expansion and control joints, all prep, labor, materials, formwork, finished associated with the construction of the sidewalk. Refer to Metro Detail No. ST-200 on Sheet C8-02A.
17	Bid item includes all necessary Maintenance of Traffic for the project including but not limited to road closures, lane closures, sidewalk closures, detours, and the lane shifts at Crutcher Street, Glenview Drive, and South 7th Street as shown on Sheet C9-00, C9-01, and C9-02.
18	Fire hydrant assembly shall consist of hydrant, valve, 8"x6" tee, concrete blocks and 6" line from water main. See Metro Detail WDET005 on Sheet C8-01A.
19	See detail on Sheet C8-02C, Sheet C5-03 for locations and cross sections for heights of turn down.
20	Bid item for cured-in-place pipe liner shall include cleaning of pipe before and after pipe lining. It shall also include cleaning of joints and grouting joints as necessary per specifications. Refer to specification sections 33 01 40 and 33 35 20. Also refer to video of pipe provided with bid documents.
21	Bid item includes new water service line from water service meters to new 8" water main and reconnection to new main
22	Item shall include cost of 6" gate valve, 8" x 6" tee, and 6" fire line
23	Item shall include cost of APCO 200A air release valve, tee, reducer (if needed) for connection to 8" main

END OF SECTION 012200

This document, together with the concepts and designs presented herein, is intended only for the specific purpose and client for which it was prepared. Reuse of and improper reliance on this document without written authorization and adaptation by Kimley-Horn and Associates, Inc. shall be without liability to Kimley-Horn and Associates, Inc.



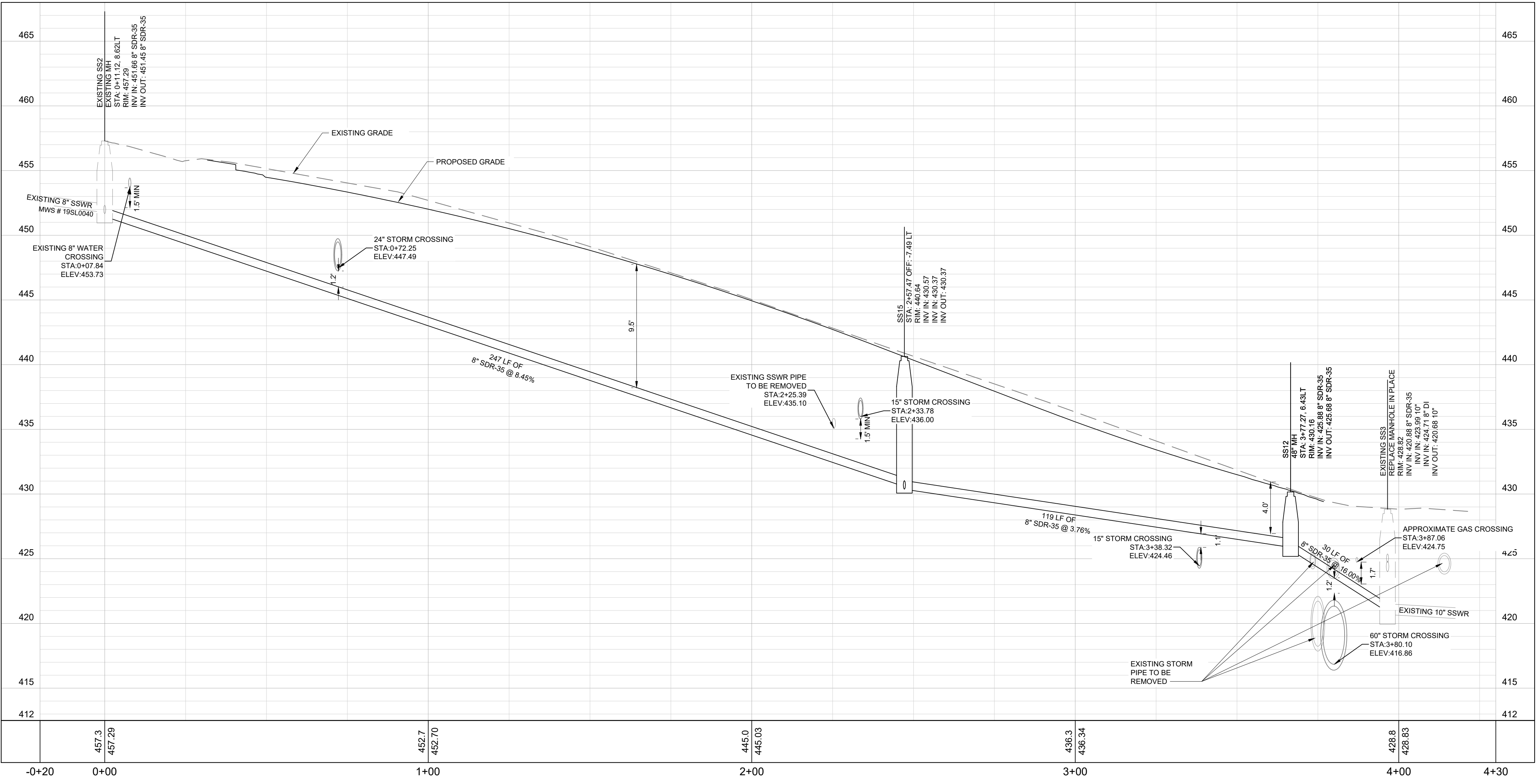
NAME	DESCRIPTION	TOP LID
EXISTING SS2	EXISTING MH	457.29
EXISTING SS3	REPLACE MANHOLE IN PLACE	428.82
EXISTING SS4	EXISTING MH	432.00
EXISTING SS5	EXISTING MH	442.25
SS12	48" MH	430.16
SS14	48" MH	432.49
SS15	48" MH	440.64

NAME	UPSTREAM	DOWNSTREAM	SIZE	LENGTH	SLOPE	MATERIAL
EXISTING SS2 - SS15	451.45 (EXISTING SS2)	430.57 (SS15)	8"	248'	8.45%	SDR-35
EXISTING SS5 - SS15	432.96 (EXISTING SS5)	430.37 (SS15)	8"	24'	11.12%	DI
SS12 - EXISTING SS3	425.68 (SS12)	420.88 (EXISTING SS3)	8"	30'	16.00%	SDR-35
SS14 - EXISTING SS4	427.00 (SS14)	426.22 (EXISTING SS4)	8"	32'	2.48%	DI
SS15 - SS12	430.37 (SS15)	425.68 (SS12)	8"	120'	3.76%	SDR-35

CONTRACTOR TO VERIFY EXISTENCE OF ANY SANITARY SERVICE LINES. DO NOT DISTURB ANY SERVICE LINES

HGL Calculation Assumptions									
ADF = 29,235 gpd									
ADF = 20.3 gpm									
Peaking Factor = 4.0									
Peak Flow = 81.4 gpm									
Manning's n = 0.013									
*ALL FLOWS ASSUMED TO ENTER THE MH UPSTREAM OF EX SS3									
**MODEL CONDITIONS ASSUME THE CONNECTION TO THE EXISTING SYSTEM IS NOT SURCHARGED									

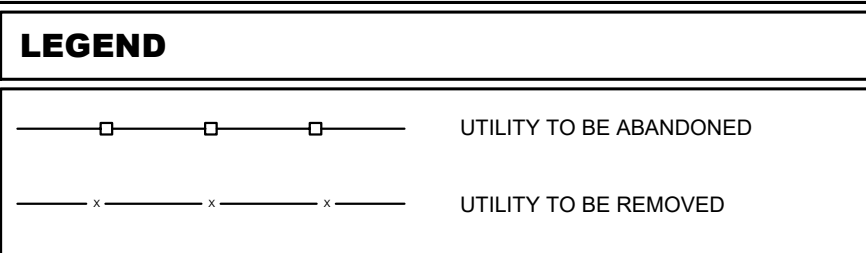
HGL Calculations									
Manhole	Max Flow Depth (FT)	Average Daily Flow			Peak Daily Flow			Proposed Invert Out (FT MSL)	
		% Full	Velocity (fps)	Max HGL (FT MSL)	Max Flow Depth (FT)	% Full	Velocity (fps)		Max HGL (FT MSL)
Existing SS2	0.10	15%	0.92	451.55	0.20	30%	1.37	451.65	451.45
SS15	0.10	15%	3.51	430.47	0.20	30%	5.29	430.57	430.37
SS12	0.10	15%	2.62	425.78	0.20	30%	3.98	425.88	425.68
Existing SS3	0.09	13%	4.33	420.77	0.18	27%	6.63	420.86	420.68



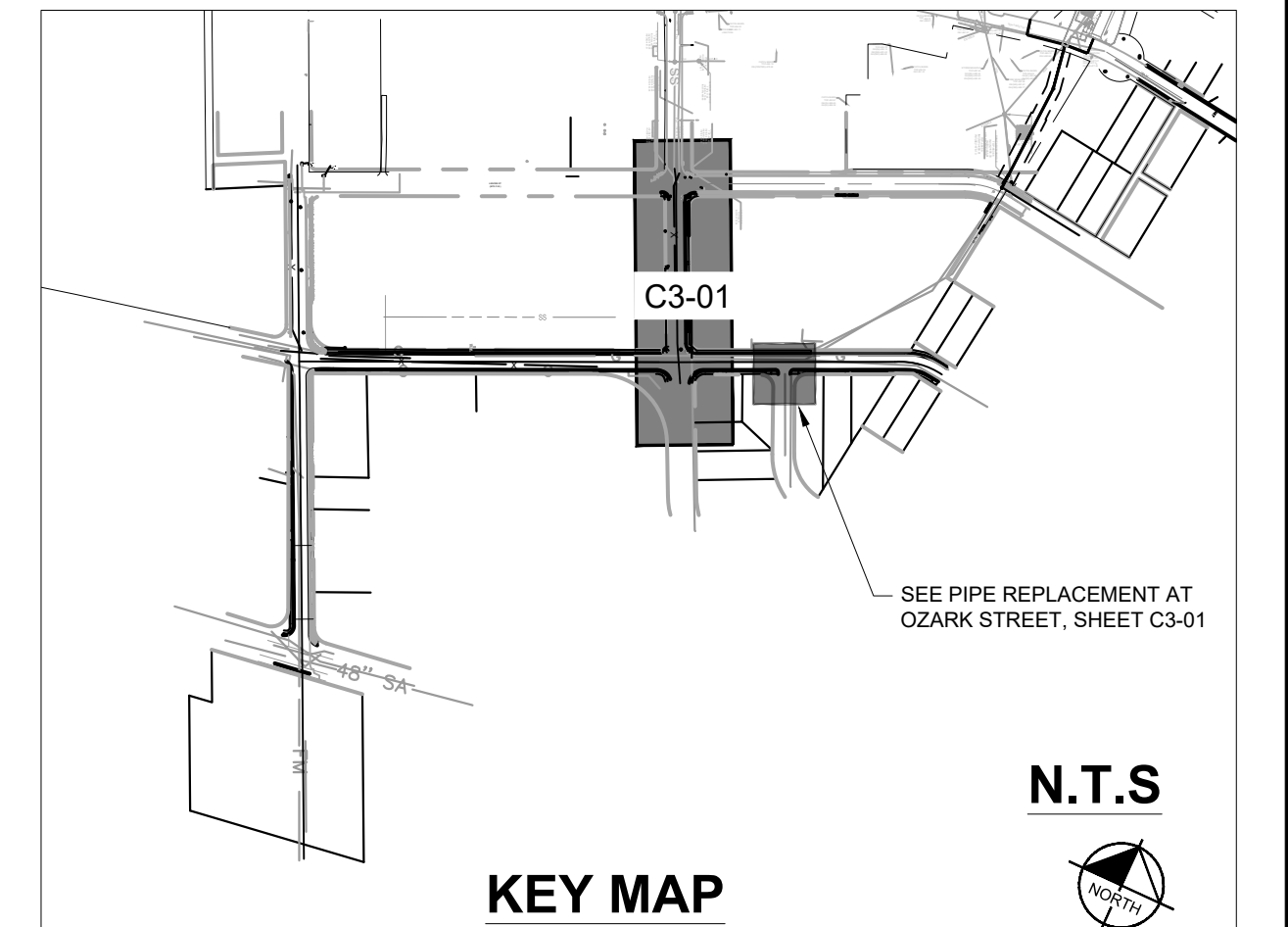
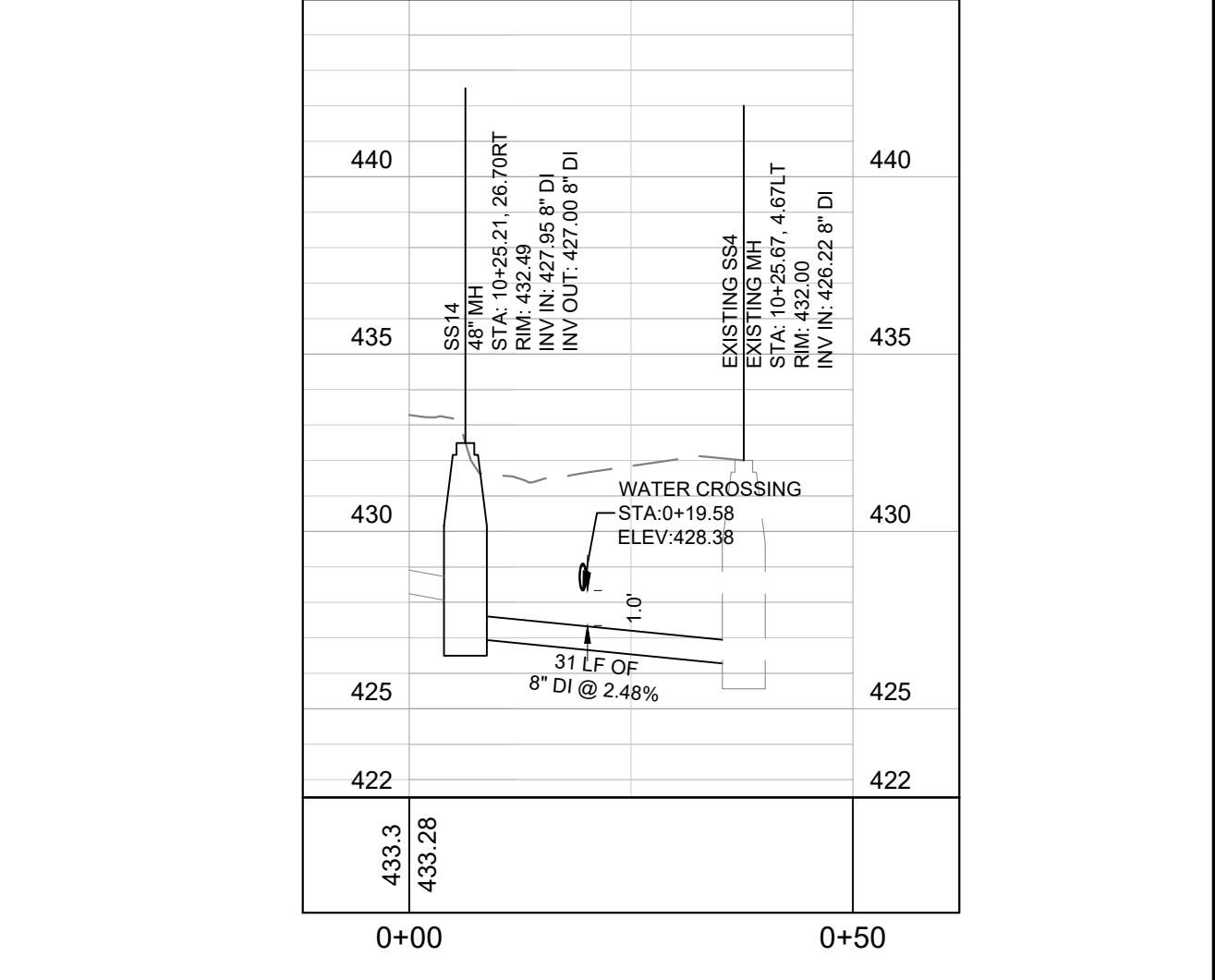
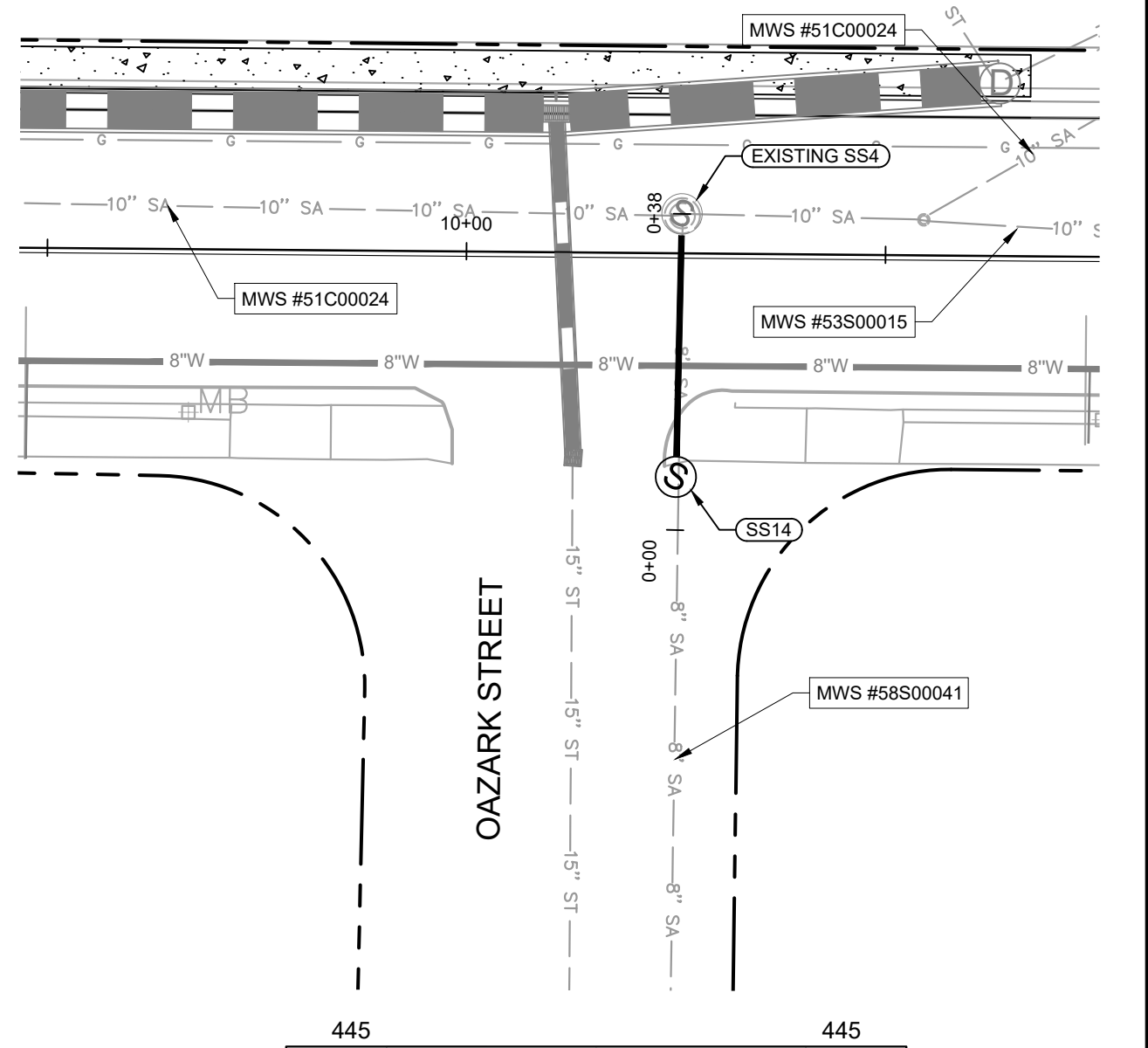
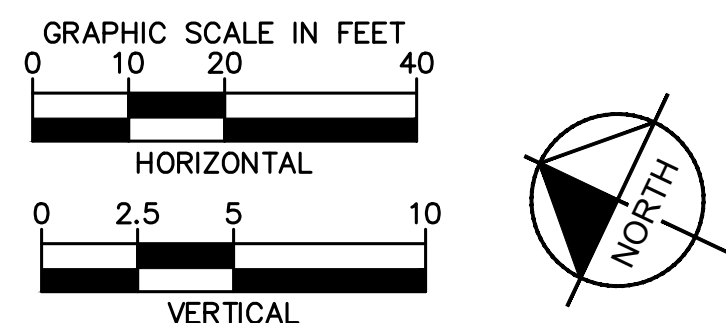
SANITARY A - 7TH STREET

EXISTING UTILITIES NOTE

- CONTRACTOR SHALL VERIFY LOCATION OF ALL EXISTING UTILITIES AND NOTIFY ENGINEER IMMEDIATELY OF ANY DISCREPANCIES AND/OR CONFLICTS WITH EXISTING OR PROPOSED UTILITIES PRIOR TO PROCEEDING.
- LOCATIONS OF FORCE MAIN AND GAS LINES ARE APPROXIMATE. CONTRACTOR IS NOT TO DISTURB EXISTING FORCE MAIN OR GAS LINES



PERMIT REVIEW



Kimley-Horn

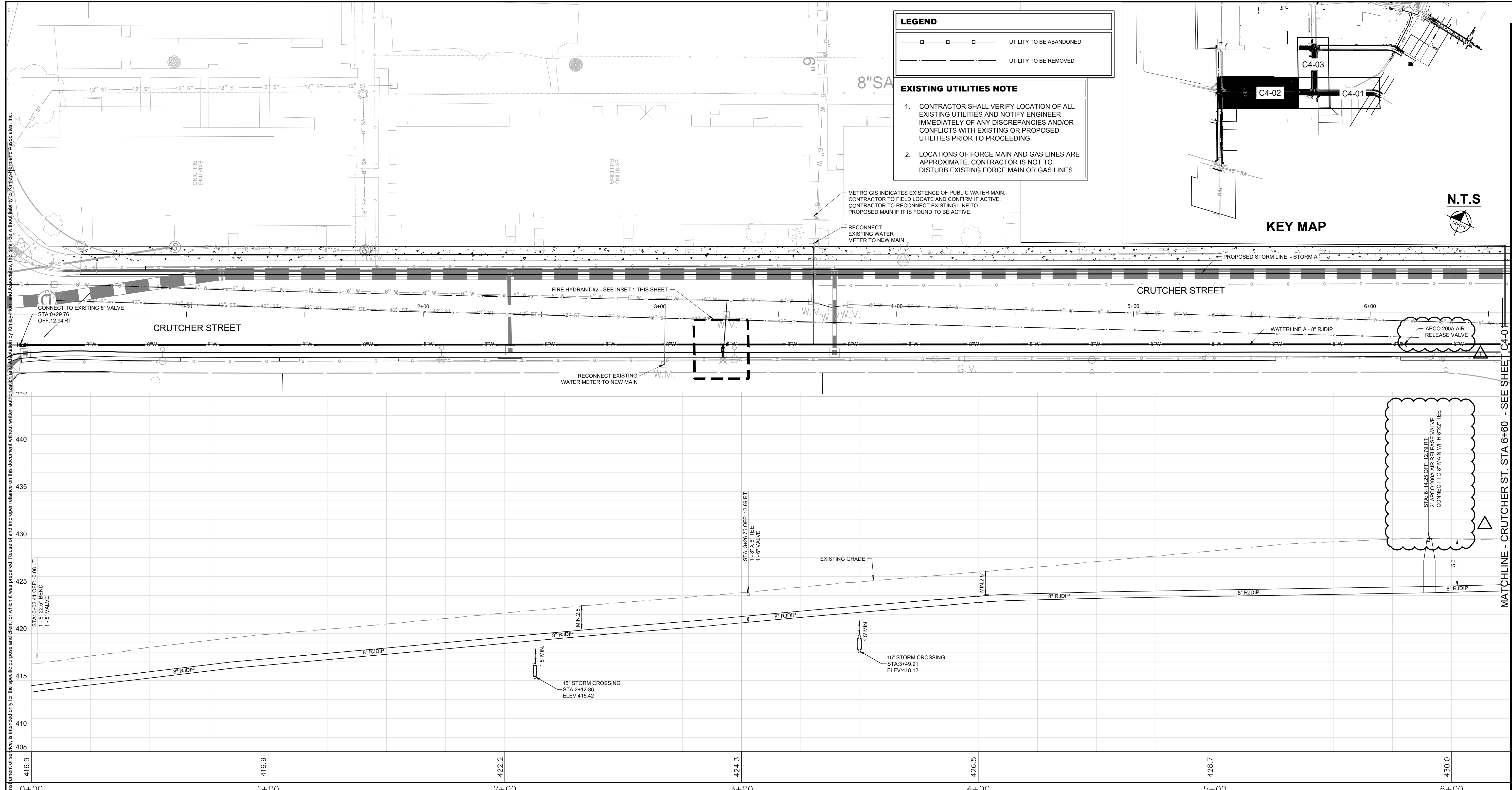
214 OceanSide Drive, Nashville, TN 37204
Main: 615.564.2701 | www.kimley-horn.com
© 2022 Kimley-Horn and Associates, Inc.

CAYCE UTILITY PHASE 1B
MDHA
NASHVILLE, TN



NO.	DATE	BY	Z/D
1	8/10/2022	ZJD	

REVISIONS	REVISION 1
DESIGNED BY:	KKF
DRAWN BY:	LEB
CHECKED BY:	ZJD
DATE:	06/16/2022
KIMLEY-HORN PROJECT NO.:	118109018
SANITARY SEWER PLAN AND PROFILE	
SHEET NUMBER	C3-01

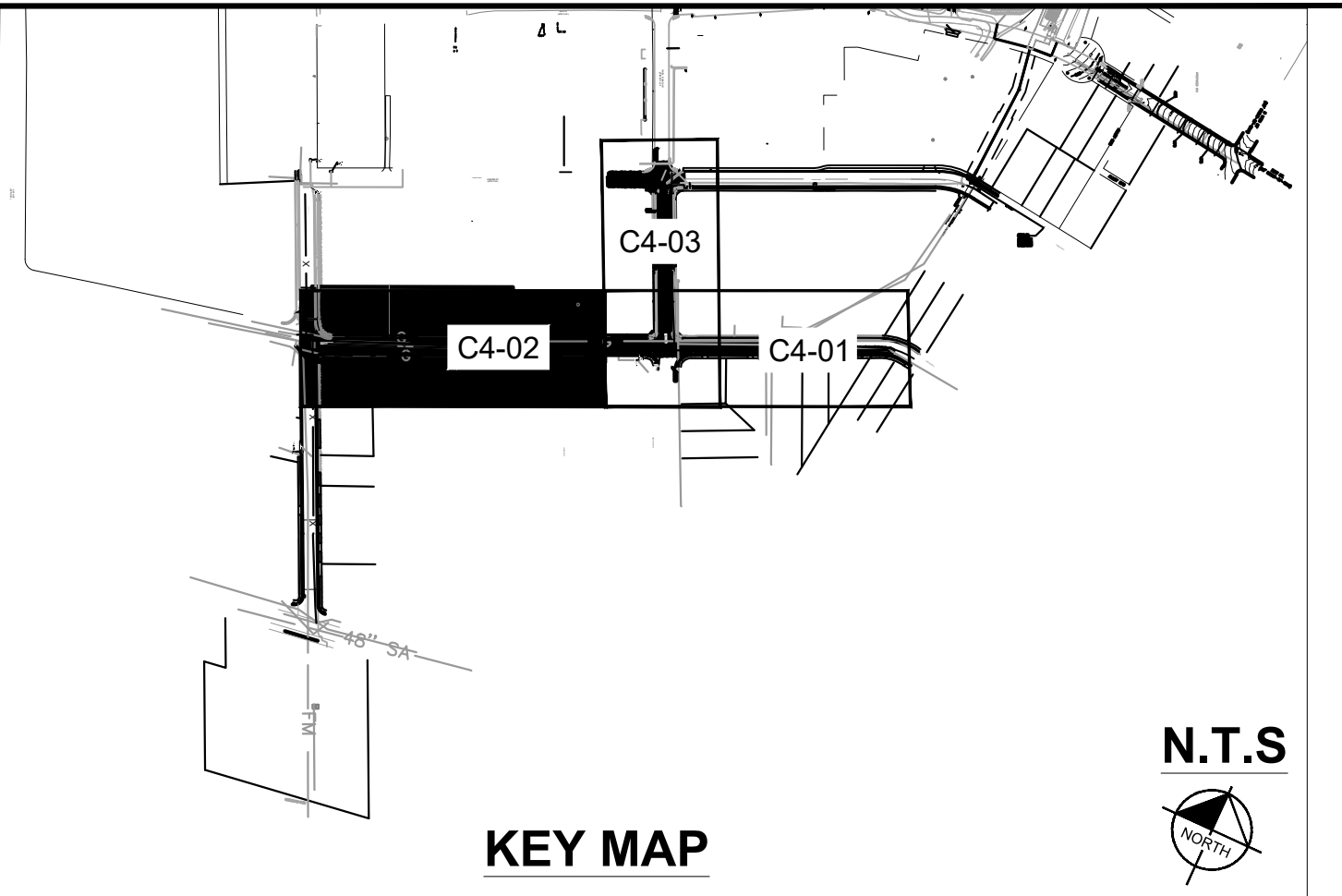


LEGEND

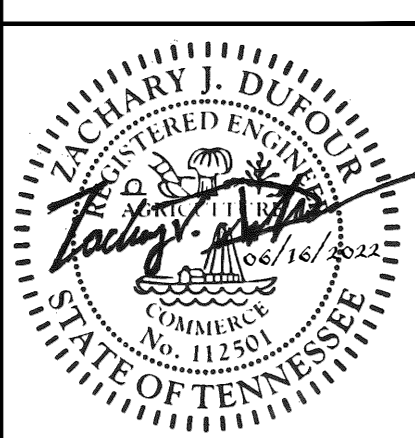
- ○ UTILITY TO BE ABANDONED
- ○ UTILITY TO BE REMOVED

EXISTING UTILITIES NOTE

- CONTRACTOR SHALL VERIFY LOCATION OF ALL EXISTING UTILITIES AND NOTIFY ENGINEER IMMEDIATELY OF ANY DISCREPANCIES AND/OR CONFLICTS WITH EXISTING OR PROPOSED UTILITIES PRIOR TO PROCEEDING.
- LOCATIONS OF FORCE MAIN AND GAS LINES ARE APPROXIMATE. CONTRACTOR IS NOT TO DISTURB EXISTING FORCE MAIN OR GAS LINES



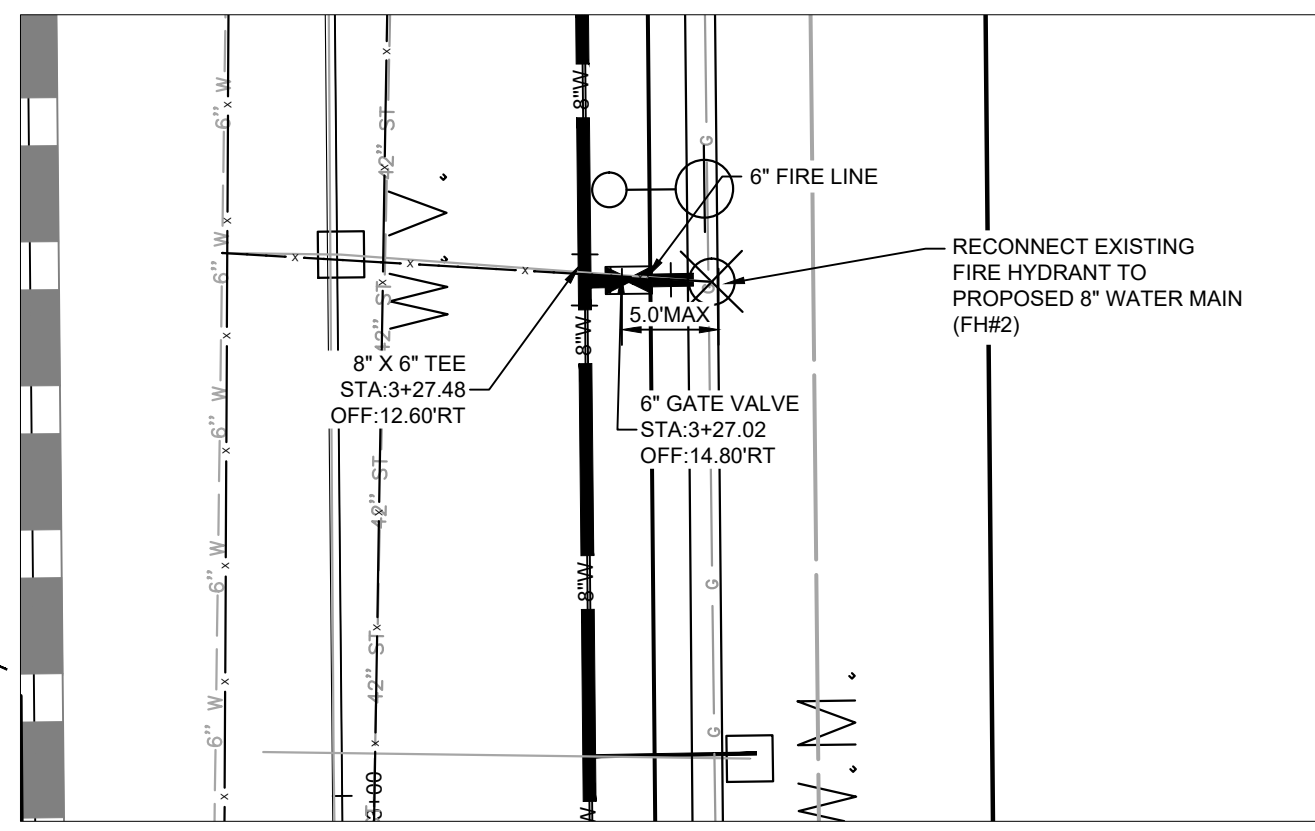
This document, together with the concepts and designs presented herein, as an instrument of service, is intended only for the specific purpose and client for which it was prepared. Reuse of and improper reliance on this document without written authorization by Kimley-Horn and Associates, Inc. and its affiliates is strictly prohibited. © 2022 Kimley-Horn and Associates, Inc.



REVISIONS	BY	DATE
REVISION 1	ZJD	8/10/2022

No.	DESIGNED BY:	CHKD BY:
1	KKF	LEB
2		
3		
4		
5		
6		
7		
8		
9		
10		

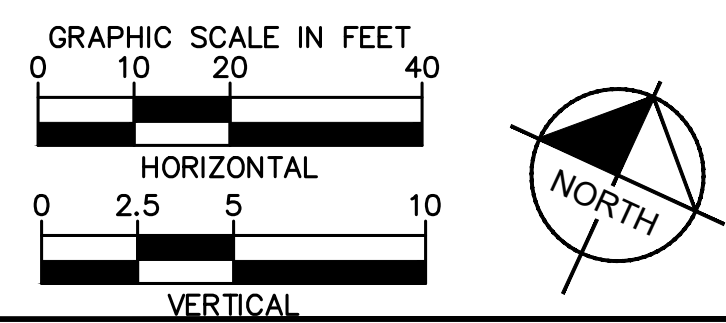
DATE: 06/16/2022
 KIMLEY-HORN PROJECT NO. 118109018



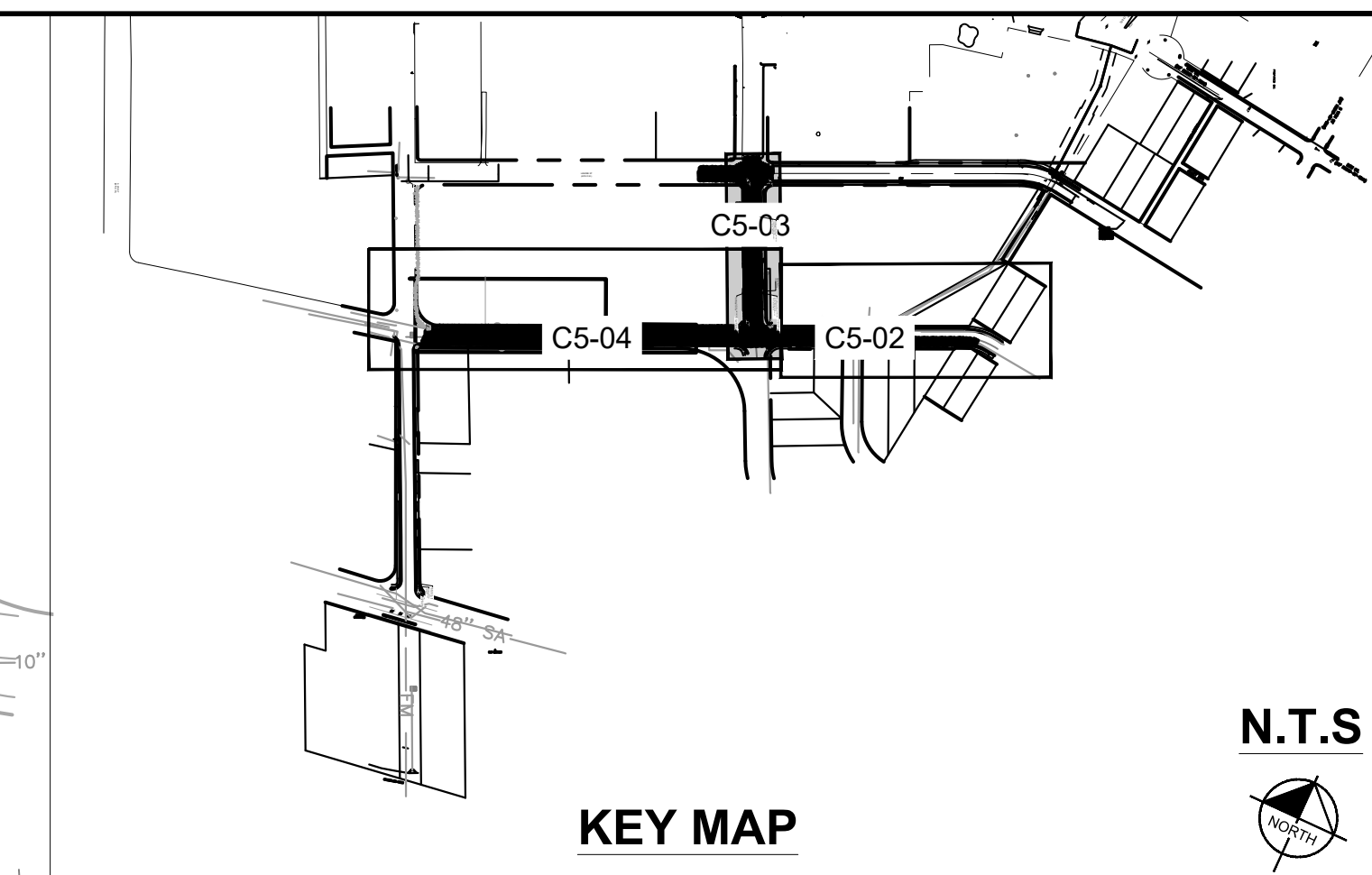
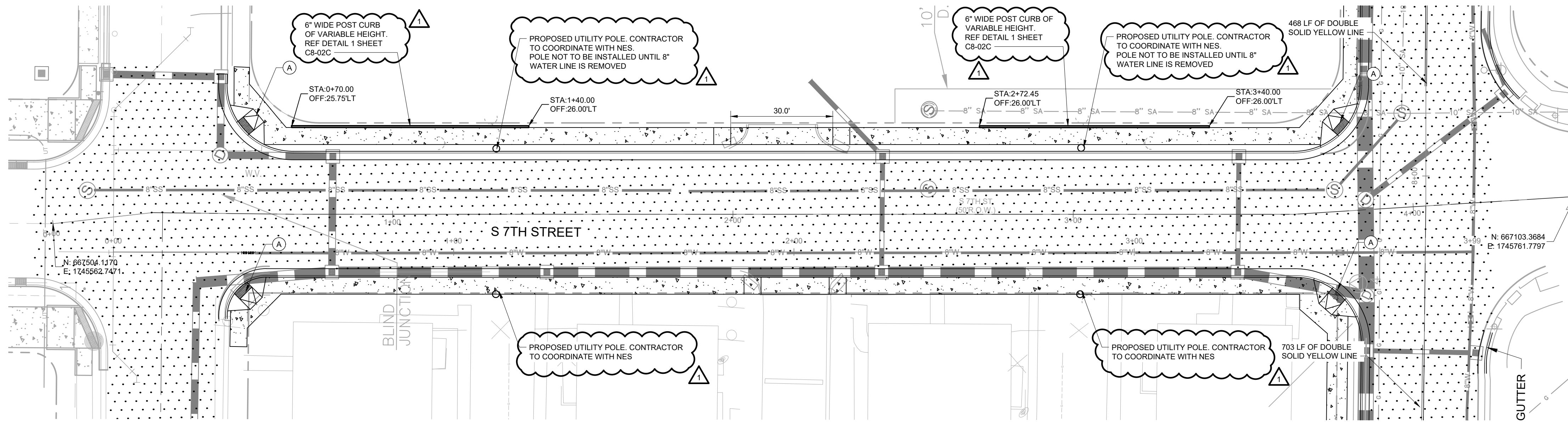
1 FIRE HYDRANT #2
 SCALE: 1" = 10'

NOTE: STRUCTURE STATION AND OFFSET DATA REFERENCED TO CENTERLINE ALIGNMENT

PERMIT REVIEW

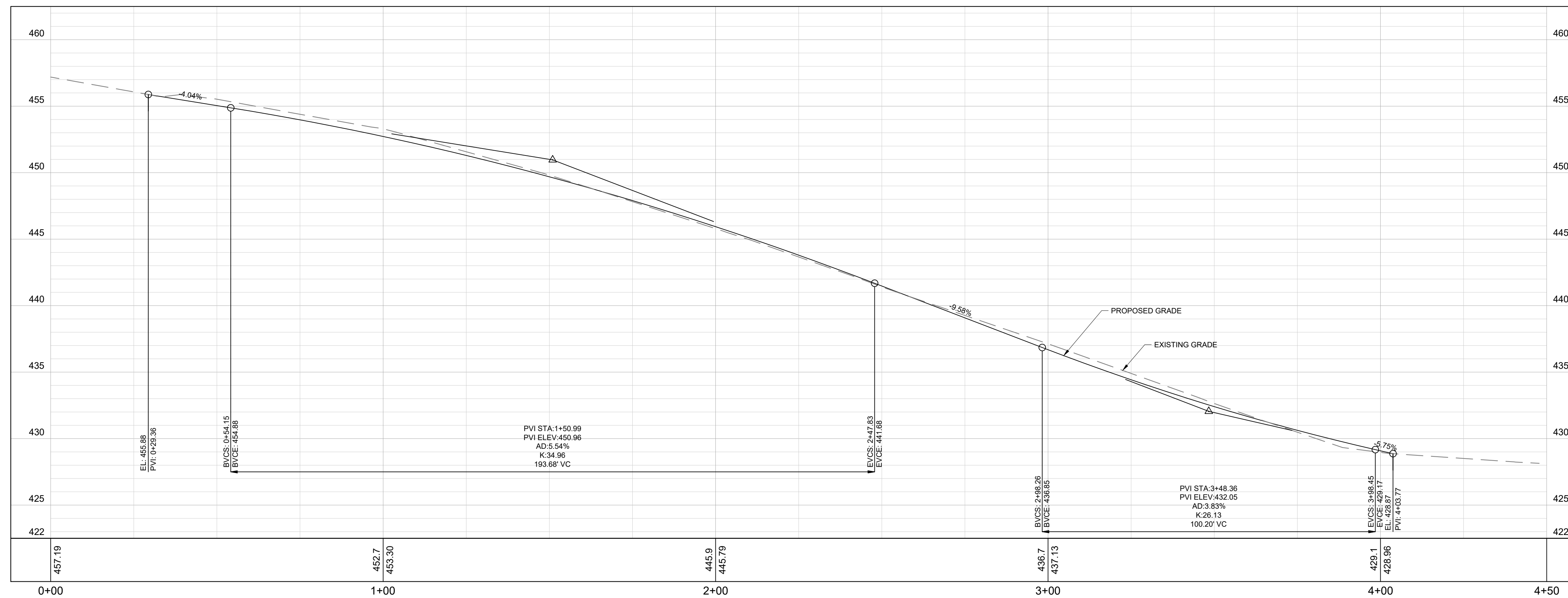


This document, together with the concepts and designs presented herein, as an instrument of service, is intended only for the specific purpose and client for which it was prepared. Reuse of and improper reliance on this document without written authorization and adaptation by Kimley-Horn and Associates, Inc. shall be without liability to Kimley-Horn and Associates, Inc.

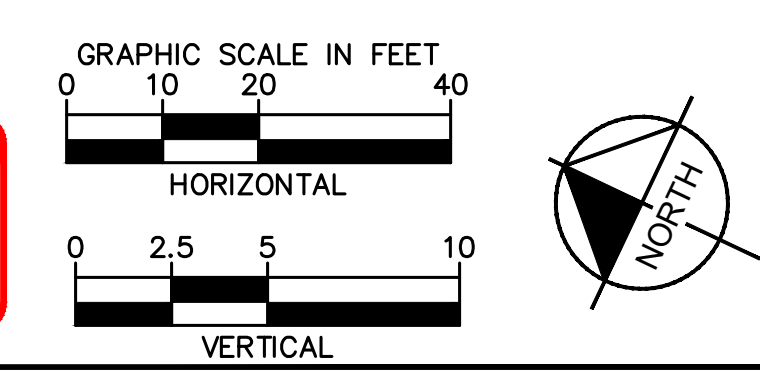


HATCH LEGEND	
	FULL DEPTH ASPHALT PAVEMENT (METRO PUBLIC WORKS ST-252B)
	CONCRETE SIDEWALK (METRO PUBLIC WORKS ST-210)
	1.5" MILL AND OVERLAY

KEYNOTE LEGEND	
	ACCESSIBLE PEDESTRIAN CURB RAMP WITH TRUNCATED DOME MAT



PERMIT REVIEW



Kimley»Horn

214 OceanSide Drive, Nashville, TN 37204
 Main: 615.564.2701 | www.kimley-horn.com
 © 2022 Kimley-Horn and Associates, Inc.

CAYCE UTILITY PHASE 1B
 MDHA
 NASHVILLE, TN



NO.	DATE	BY	Z/D
1	8/23/2022		
2			
3			
4			
5			
6			
7			
8			
9			
10			

DESIGNED BY:	
DRAWN BY:	
CHECKED BY:	
DATE:	06/16/2022
KIMLEY-HORN PROJECT NO.	118109018
ROADWAY PLAN AND PROFILE - S 7TH STREET	
SHEET NUMBER	C5-03

