

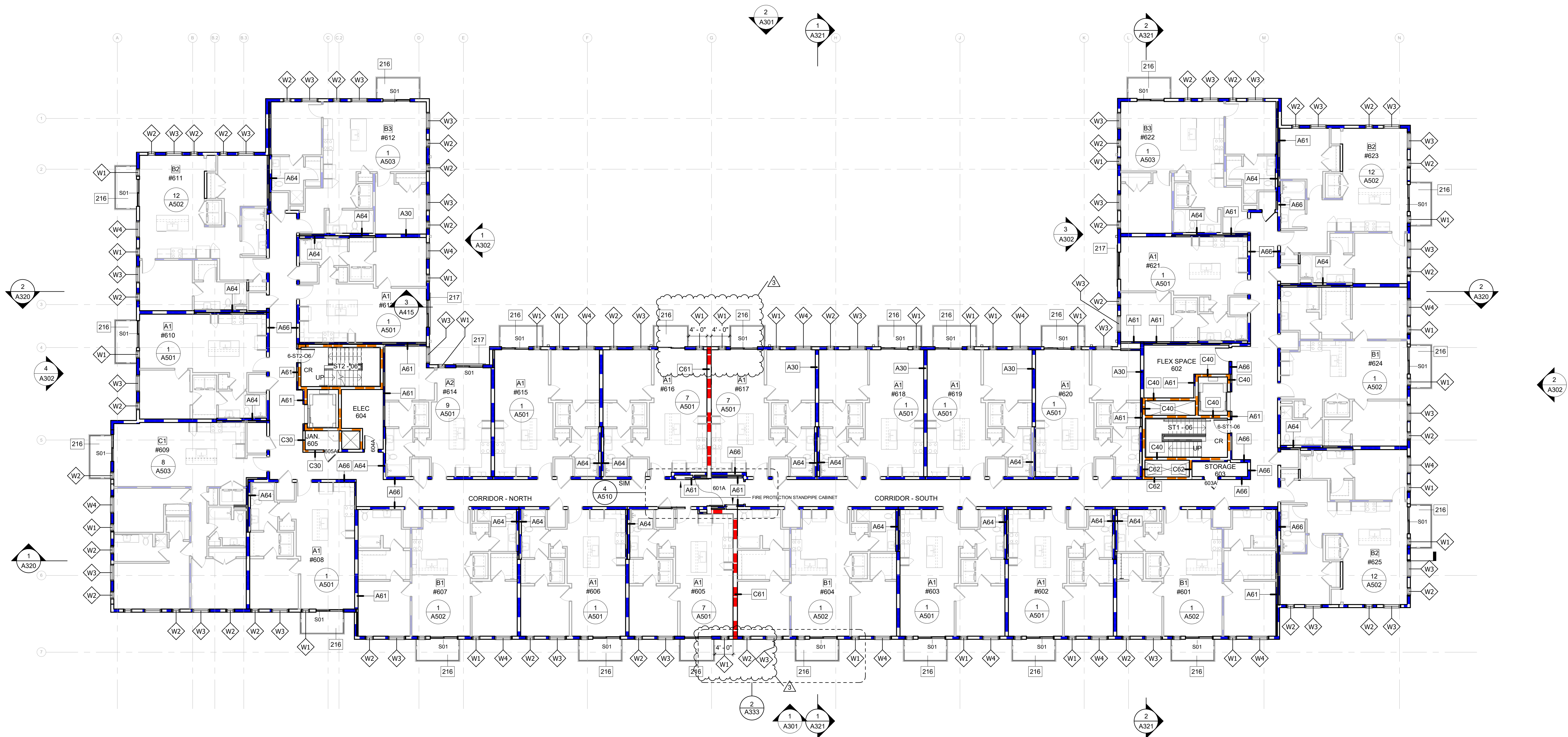
Drawn By: Author  
 Checked By: Checker  
 Approved By: Approver

Keynote Legend	
Key Value	Keynote Text
216	PREFABRICATED BALCONY W/ COMPOSITE DECKING (TYP.)
217	JULIET BALCONY (TYP.)

- KEYNOTE LEGEND**
- 10909 OWNER FURNISHED EQUIPMENT (DASHED LINES)
  - SEE "GENERAL NOTES" ON SHEET G020
  - 201 SEE "NEW CONSTRUCTION KEYNOTES" ON THIS SHEET
  - 101 DOOR DESIGNATION (SEE SHEET A901-A903, AND PROJECT MANUAL FOR DOOR, FRAME AND HARDWARE SCHEDULE)
  - 11 EXTERIOR WINDOW DESIGNATION (SEE SHEET A903 FOR EXTERIOR WINDOW SCHEDULE)
  - 12 INTERIOR WINDOW DESIGNATION (SEE SHEET A903 FOR INTERIOR WINDOW SCHEDULE)
  - 1 TOILET ACCESSORY SET (SEE SHEET ID SHEETS FOR TOILET ACCESSORY SCHEDULE)
  - A00 WALL DESIGNATION (SEE SHEET G030 FOR TYPES OF WALLS/ PARTITIONS/ BARRIERS)

- NEW CONSTRUCTION LEGEND**
- TYPE A - 1 HOUR FIRE BARRIERS
  - TYPE C - 2 HOUR FIRE BARRIERS
  - TYPE C - 2 HOUR RATED WOOD STUD FIRE WALL
  - TYPE G - 4 HOUR FIRE BARRIERS
  - TYPE N - NON-RATED PARTITION
  - CIP STRUCTURAL WALL - INHERENT 2 HOUR FIRE BARRIER
  - SEE SHEET G030 - WALLS/ PARTITIONS/ BARRIERS LEGEND FOR COMPONENTS OF WALLS/ PARTITIONS/ BARRIERS
  - REFER TO S-SERIES FOR STRUCTURAL WALLS/ PARTITIONS / BARRIERS
  - TRAFFIC COATING
  - COLD APPLIED PUMA WATERPROOFING TRAFFIC DECK COATING
  - ACC ACCESSIBLE
  - CR CARD READER
  - DS DOWNSPOUT
  - EP ELECTRICAL PANEL
  - EMHO ELECTROMAGNETIC HOLD OPEN
  - FD FLOOR DRAIN
  - KP KEY PAD

COMPLY WITH ALL REQUIREMENTS INCLUDED IN THE "GENERAL NOTES FOR NEW CONSTRUCTION FLOOR PLANS" ON "GENERAL NOTES" SHEET



Revision		
No.	Date	Description
1	10/13/22	ADDENDUM 01
2	10/21/22	ADDENDUM 02
3	01/13/22	Addendum No. 2

BIM 380/144287\_01 5th and Summer/44287\_Central\_MDHA\_5thandSummer.rvt  
 1/13/2023 12:08:07 PM