

Drawn By: Author
 Checked By: Checker
 Approved By: Approver

Key Value	Keynote Text
214	VEHICULAR BARRIER CABLE
216	PREFABRICATED BALCONY W/ COMPOSITE DECKING (TYP.)
217	JULIET BALCONY (TYP.)
226	SCUPPER WITH CONDUCTOR HEAD AND DOWNSPOUT. PROVIDE OVERFLOW FLANGE IN CONDUCTOR HEAD
228	BOLLARDS, TYP.
301	DRYER + PLUMBING VENT CAP - DOUBLE
302	DRYER + PLUMBING VENT CAP - SINGLE
303	SECURITY CAMERA - COORDINATE WITH OWNER'S SECURITY VENDOR. LOCATE CAMERA NO MORE THAN 12'-15" ABOVE GRADE FOR SERVICE ACCESS.
311	PRE-FINISHED METAL COPING - COLOR BY ARCHITECT

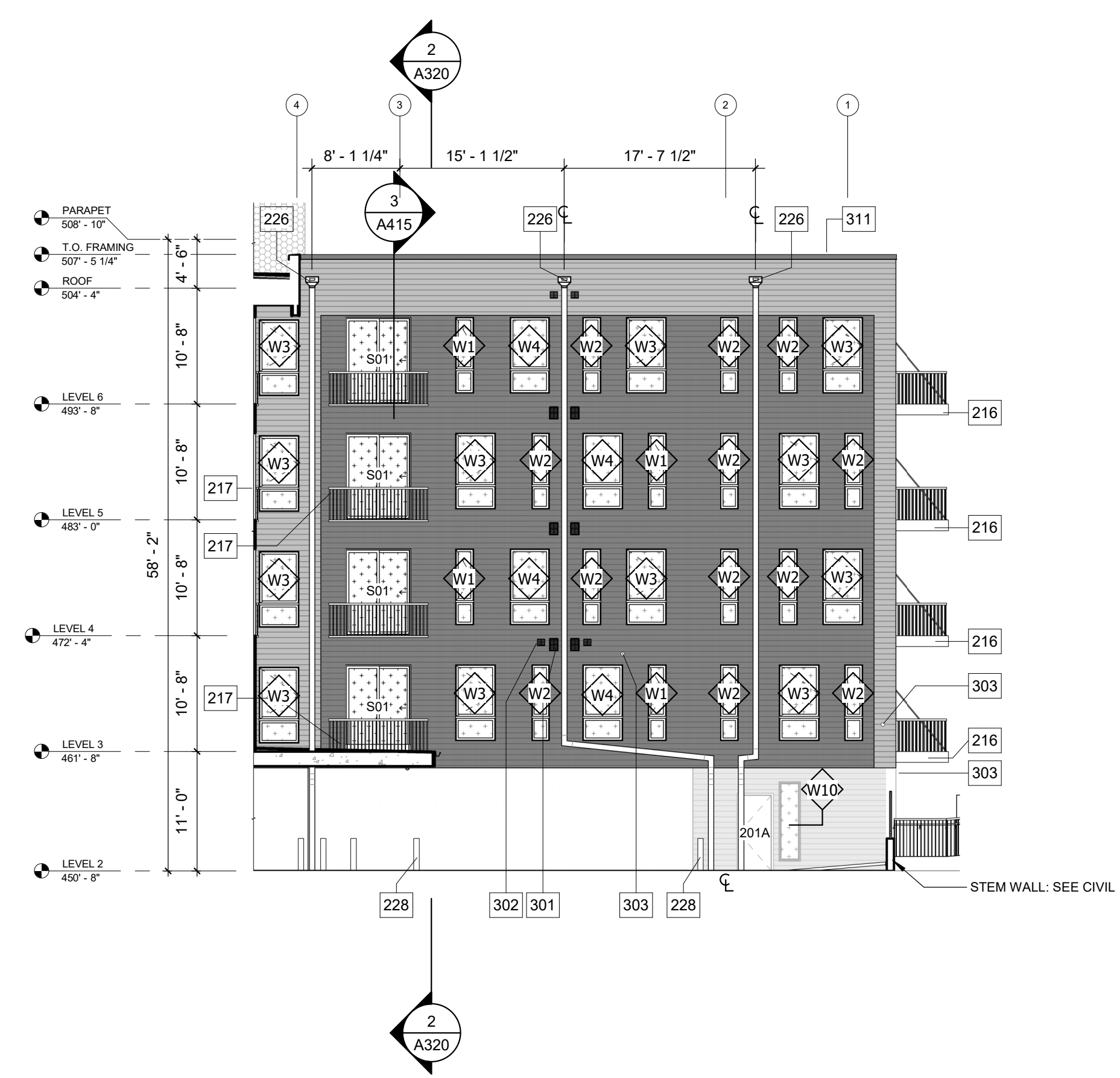
MATERIAL LEGEND

M-1 - WHITE CORRUGATED METAL (PAC-CLAD, COLOR: BONE WHITE)	ACM - ALUMINUM COMPOSITE METAL PANEL (B.O.D.: ALUCOBOND, COLOR: ANTRAZIT GREY)
M-2 - GRAY CORRUGATED METAL (PAC-CLAD, COLOR: SLATE GRAY)	BR-01 - BRICK (B.O.D.: WATSONTOWN BRICK, COLOR: NIGHT SHADOW MATT CLEAR)
M-3 - CHARCOAL CORRUGATED METAL (PAC-CLAD, COLOR: MUSKET GRAY)	BR-02 - THIN SET BRICK (B.O.D.: METROBRICK, COLOR: 705 GRAPHITE)
GL-1 - INSULATED GLAZING	CMU
GL-2 - NON-INSULATED SINGLE PANE TRANSLUCENT GLAZING	EIFS
GL-3 - INSULATED GLAZED SPANDREL PANEL	METAL GREEN SCREEN

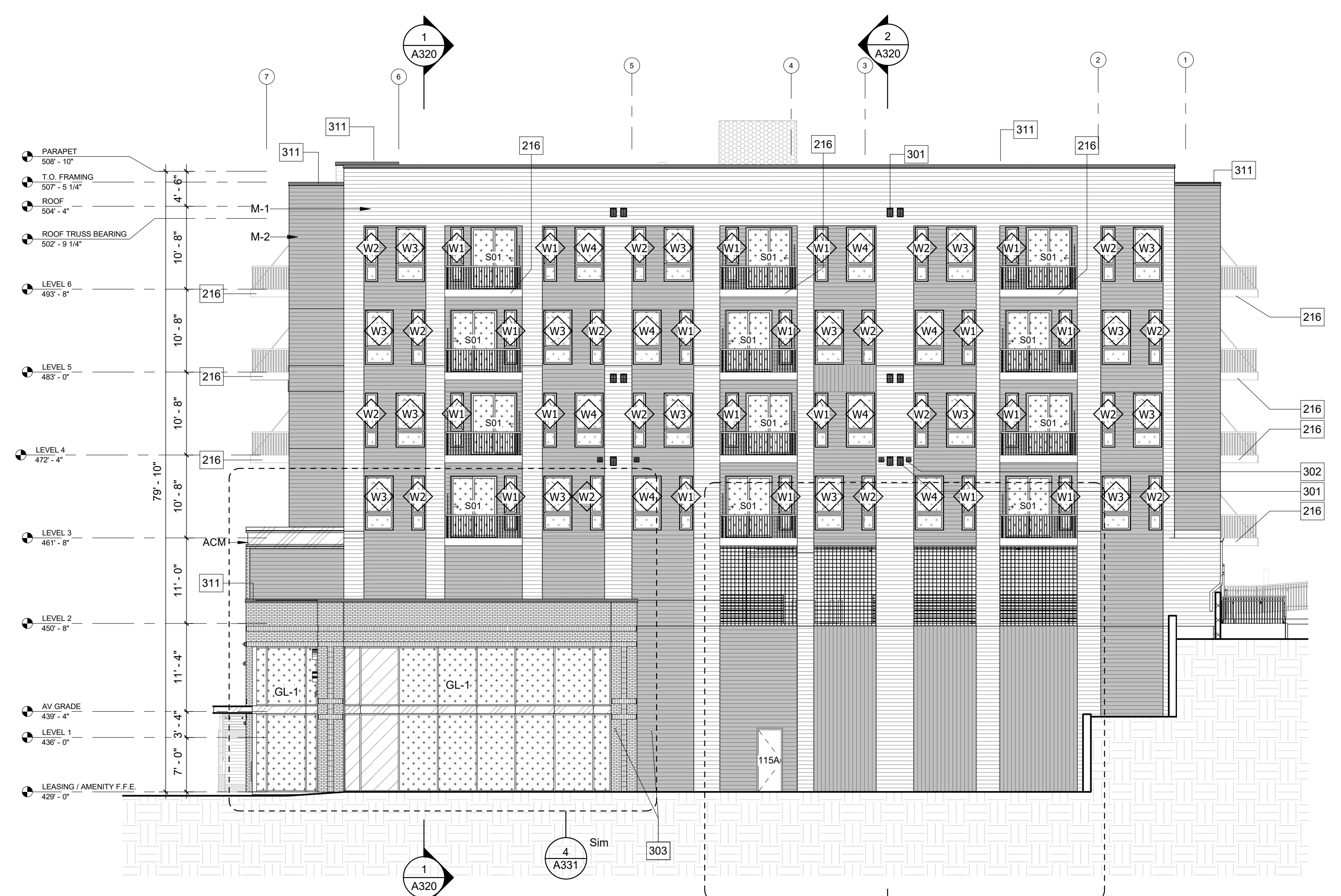
NOTE: ALL UNITS TO HAVE A MINIMUM OF 1 OPERABLE WINDOW IN LIVING SPACE AND EACH BEDROOM SPACE

GENERAL NOTES FOR EXTERIOR ELEVATIONS

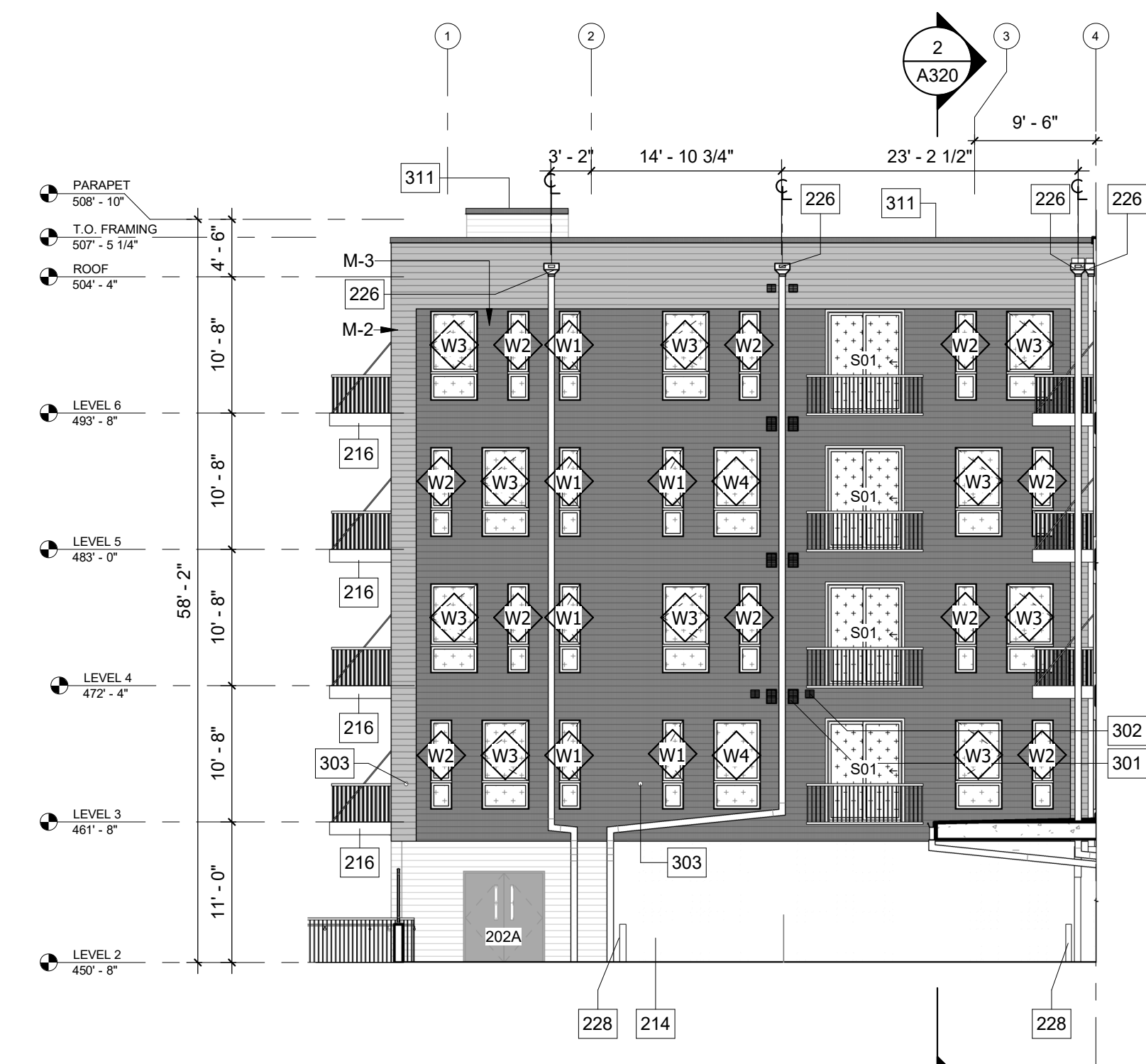
- PAINT EXPOSED ROOF MOUNTED EQUIPMENT, PIPING, SCREENS, ETC. IN A COLOR AS SELECTED BY THE ARCHITECT; EXCEPT THAT, ITEMS WHICH ARE ALUMINUM OR STAINLESS STEEL SHALL NOT BE PAINTED.
- THE EXTERIOR WALL FINISH MATERIAL SHALL BE BRICK AND CORRUGATED METAL PANEL. REFER TO WALL SECTIONS AND SPECIFICATIONS FOR MORE INFORMATION.
- PAINT EXTERIOR SURFACES OF HOLLOW METAL DOORS AND DOOR FRAMES IN A COLOR SELECTED BY THE ARCHITECT (IF NOT OTHERWISE INDICATED).
- STEEL SHELF ANGLE WITH FLASHING REQUIRED AT BRICK WALLS EVERY 30'-0" VERTICAL. LOCATE STEEL SHELF ANGLE AND FLASHING AT 26'-8" ABOVE GRADE. REFER TO STRUCTURAL DRAWINGS.
- HORIZONTAL AND VERTICAL REVEALS IN BRICK INDICATE 1/2" BRICK COURSE INSET.



1 COURTYARD SOUTH ELEVATION
 3/32" = 1'-0"



2 SOUTH ELEVATION
 3/32" = 1'-0"



3 COURTYARD NORTH ELEVATION
 3/32" = 1'-0"

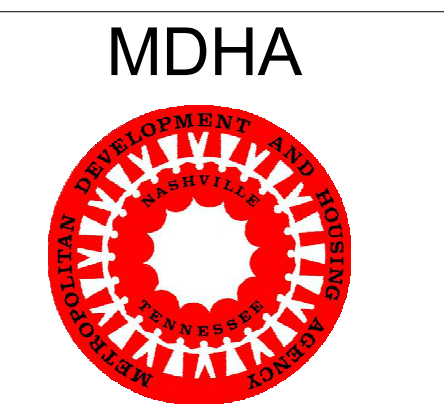


4 NORTH ELEVATION
 3/32" = 1'-0"



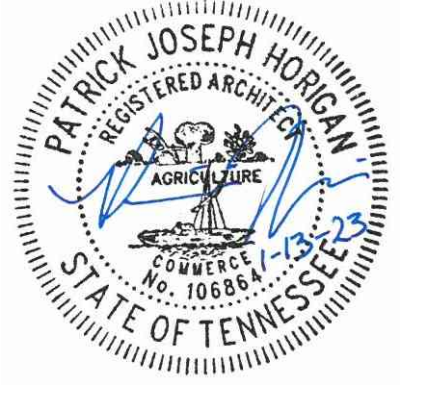
GreshamSmith.com

222 Second Avenue South
 Suite 1400
 Nashville, TN 37201
 615.770.8100



5TH AND SUMMER PLACE
 725 S. 5th Street
 Nashville, TN 37206

CONSTRUCTION DOCUMENTS



No.	Date	Description
1	10/21/22	ADDENDUM 02
2	01/13/22	Addendum No. 2

EXTERIOR ELEVATIONS

A302

44287.01
 09.21.2022