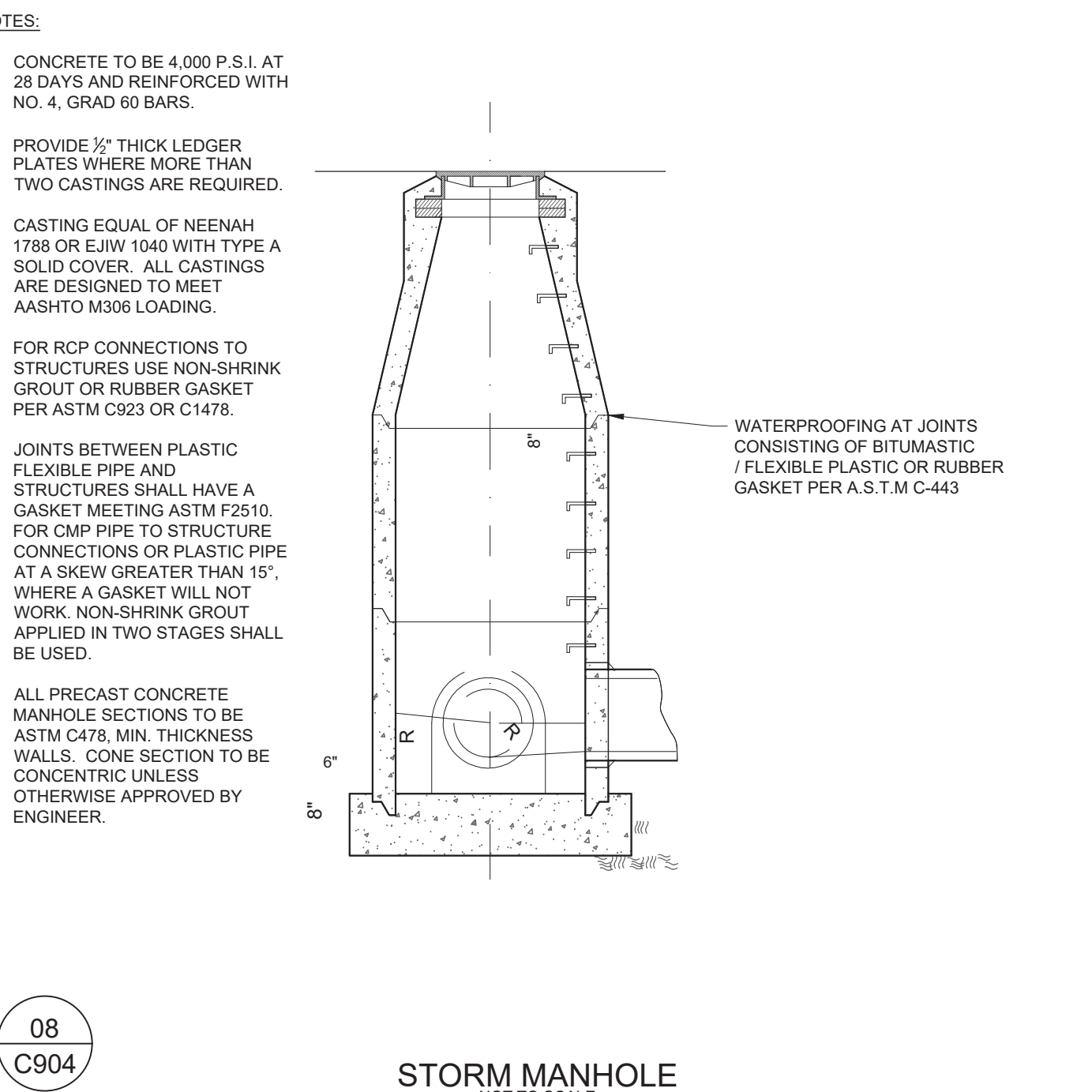
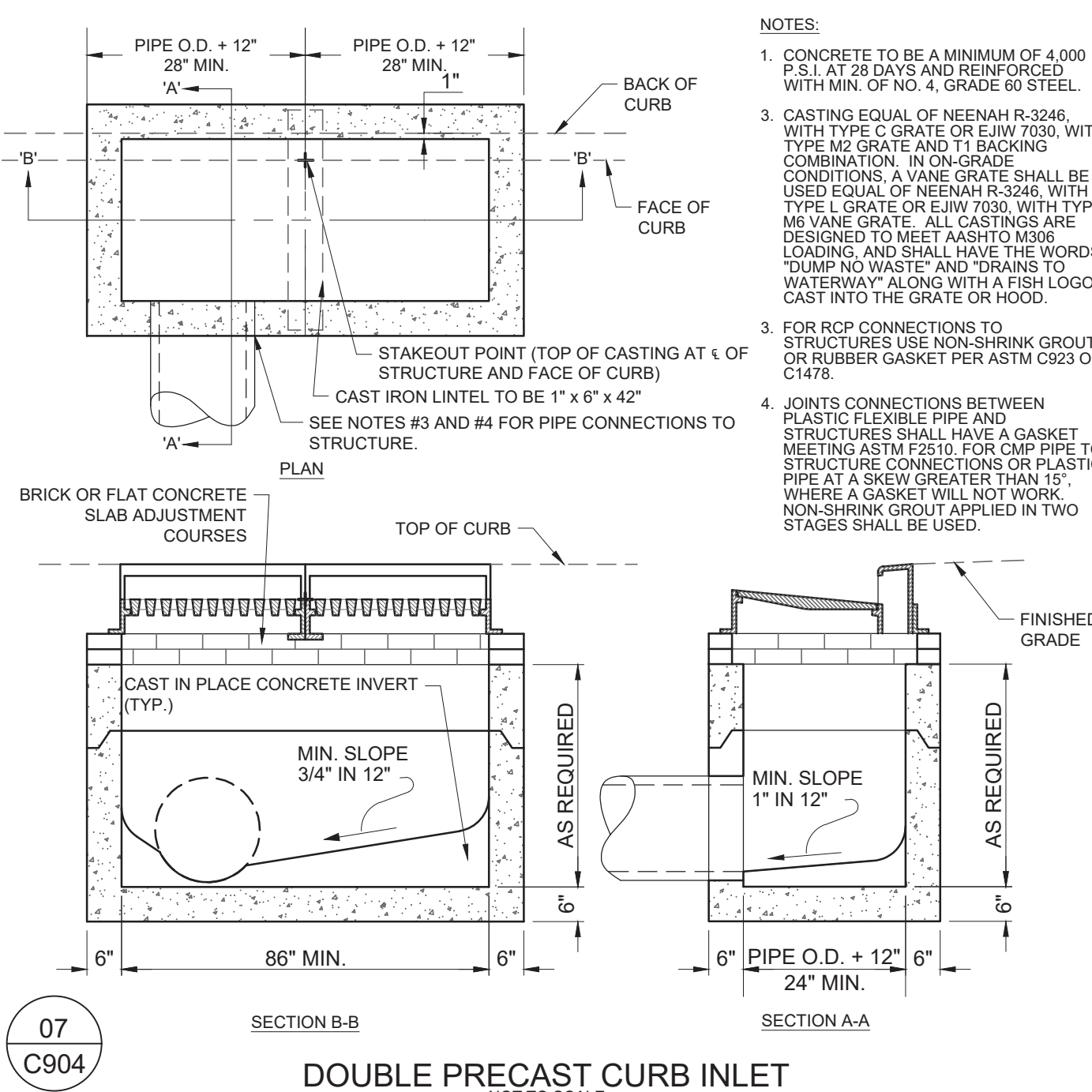
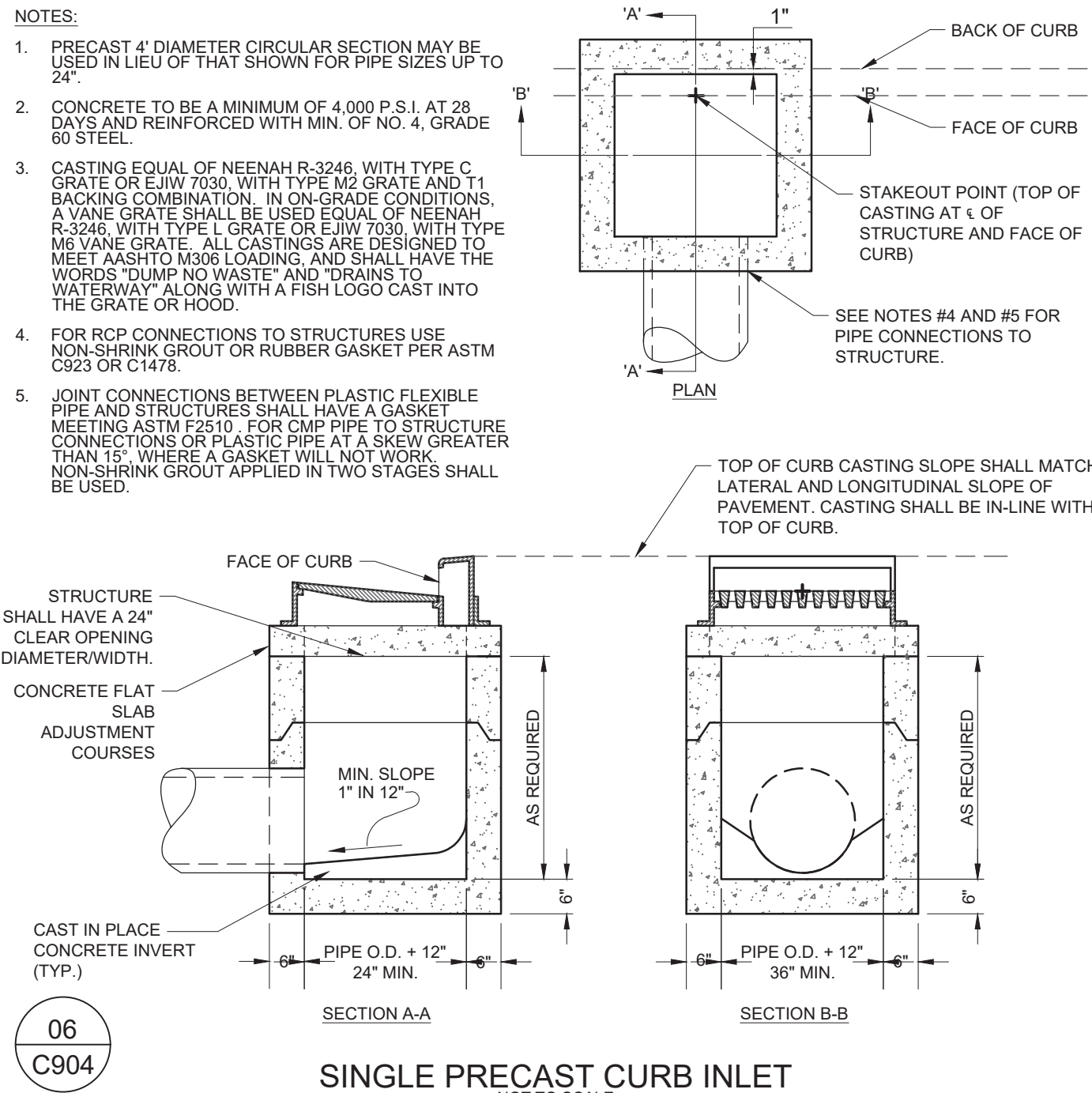
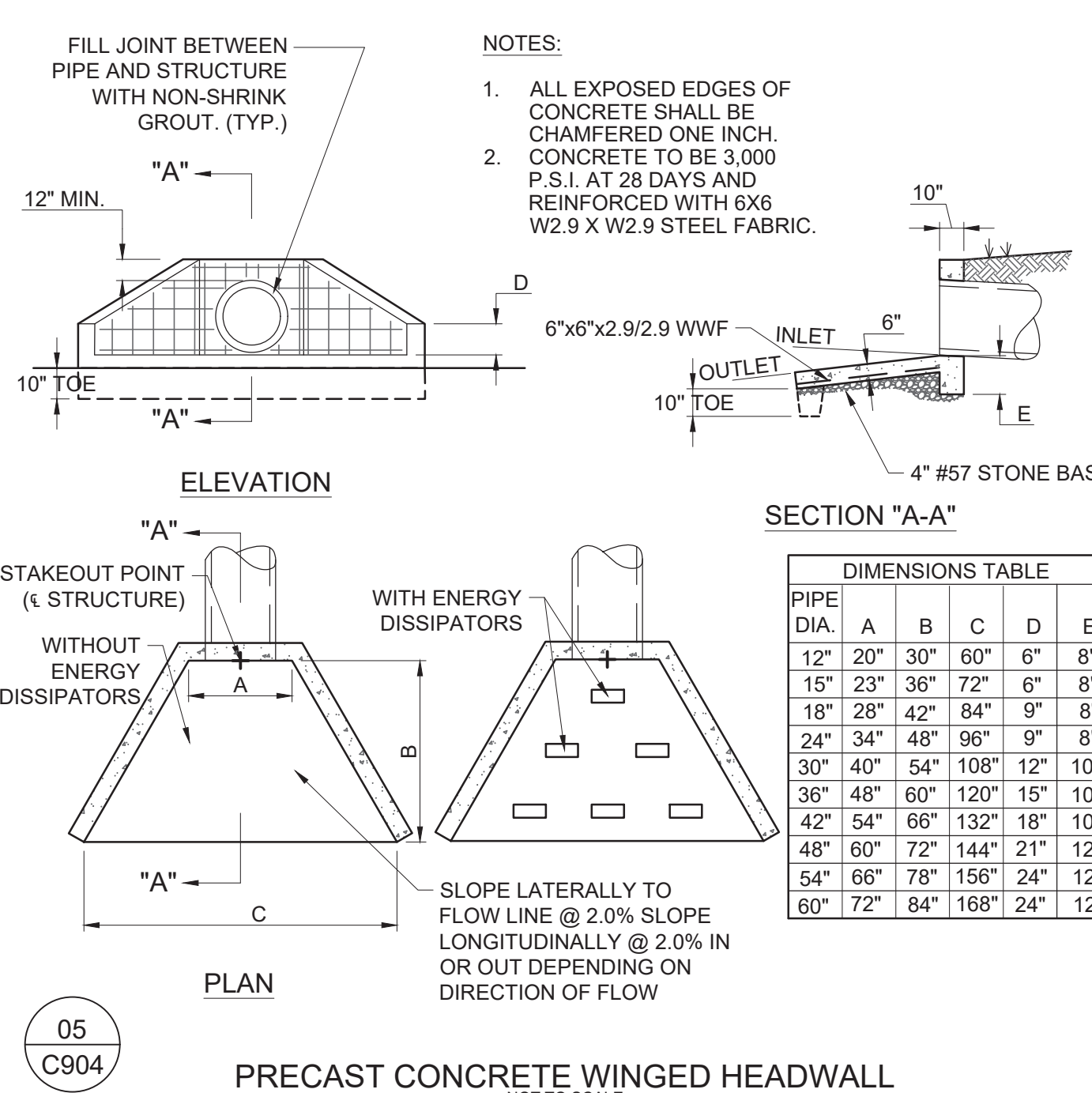
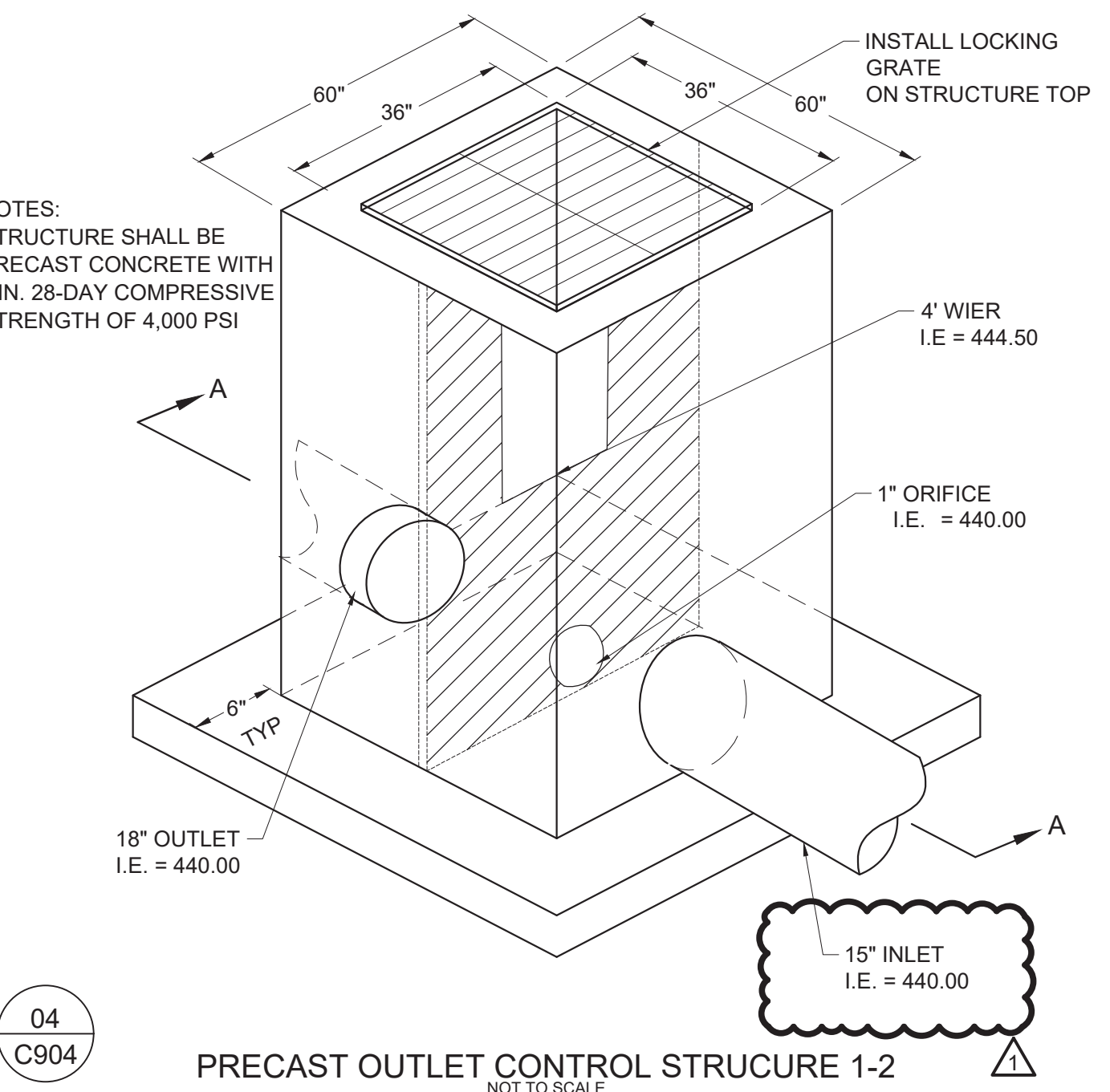
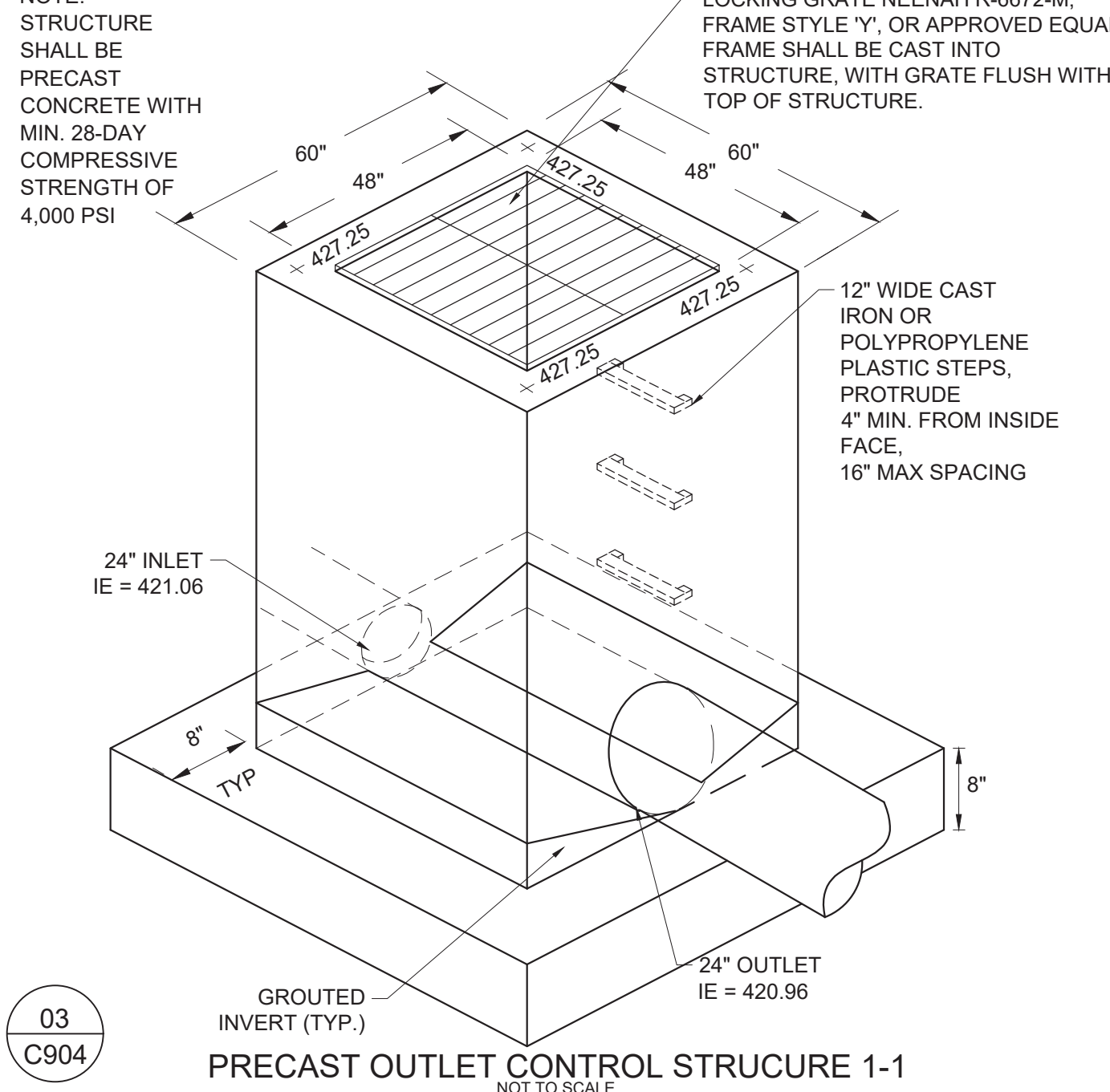
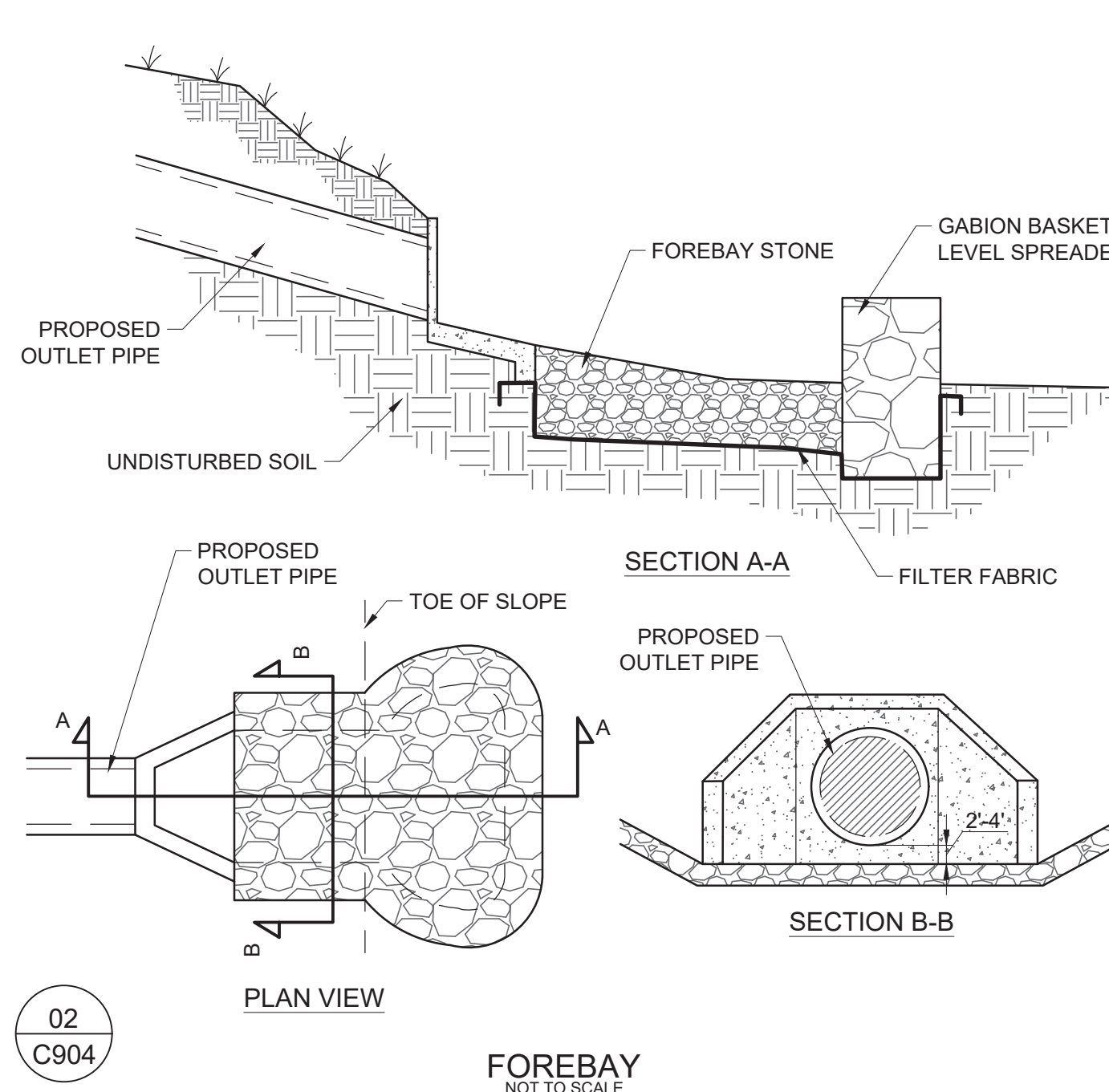
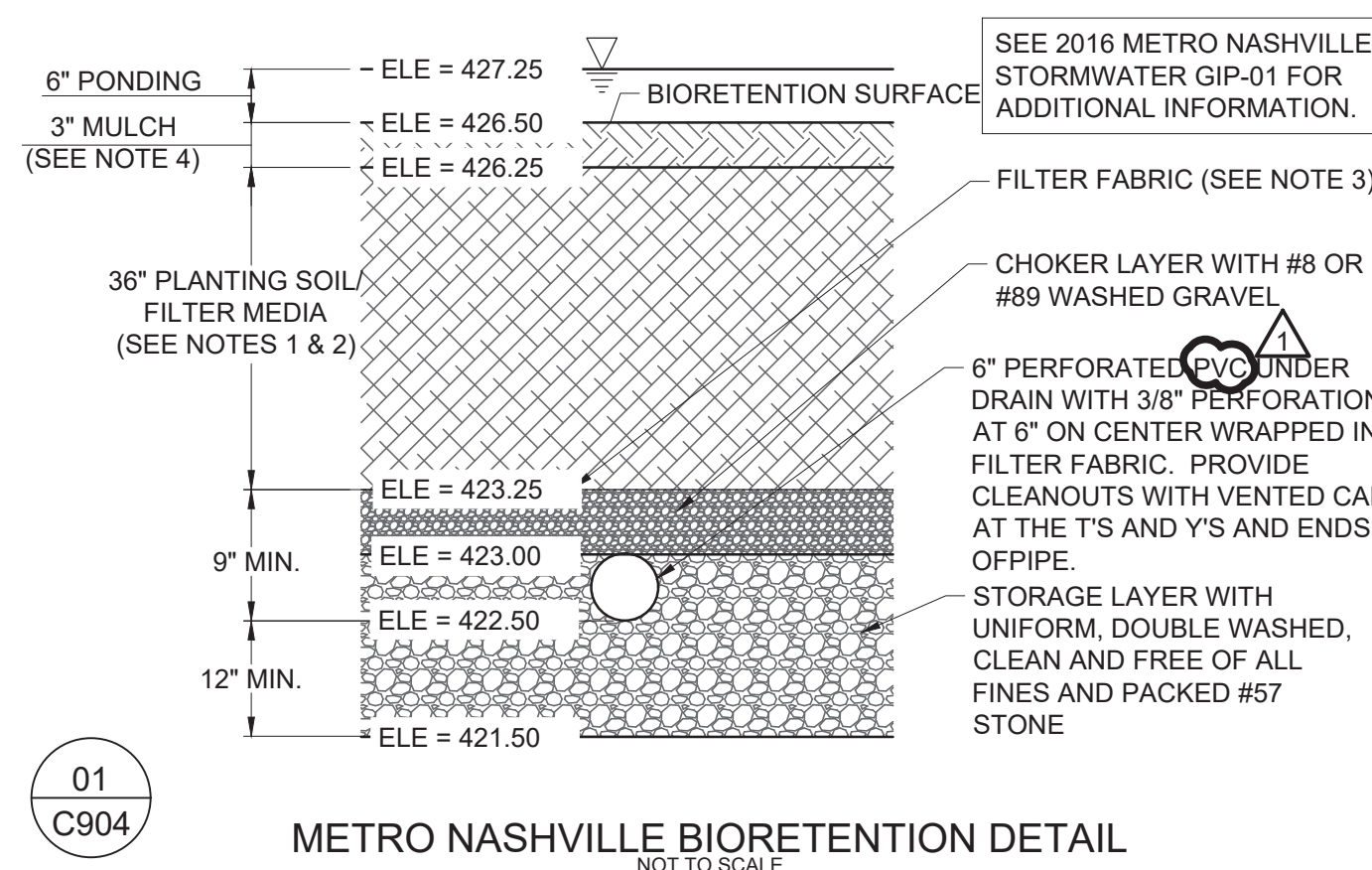


Drawn By: DRW
Checked By: CHK
Approved By: APR

- BIORETENTION NOTES:**
- PLANTING SOIL INFILTRATION RATE SHALL BE 1 INCH PER HOUR MINIMUM.
 - FILTER MEDIA SHALL BE PER METRO NASHVILLE STORMWATER GIP-01.
 - SAND 70% TO 85%
 - SILT + CLAY 10-20%, WITH NO MORE THAN 10% CLAY
 - 5-10% ORGANIC MATTER
 - SOIL FILTER FABRIC SHALL BE A NON-WOVEN GEOTEXTILE FABRIC WITH A FLOW RATE OF > 110 GAL./MIN./FT². APPLY ONLY TO THE POND SIDES AND ABOVE THE UNDERDRAIN.
 - MULCH SHALL BE SHREDDED, AGED HARDWOOD MULCH OR PINE STRAW.
 - STORAGE LAYER SHALL CONSIST OF CLEAN, WASHED #57 STONE.
 - CONTRACTOR SHALL NOTIFY MWS DEVELOPMENT REVIEW AT LEAST 24 HOURS PRIOR TO THE INSTALLATION OF THE PLANTING SOIL FILTER BED. AT THE COMPLETION OF THE INSTALLATION, THE CONTRACTOR WILL COLLECT ONE SAMPLE PER BIORETENTION BED FOR ANALYSIS AND CONFIRMATION OF THE SOIL CHARACTERISTICS BY MWS.



GreshamSmith.com

222 Second Avenue South
Suite 1400
Nashville, TN 37201
615.770.8100

5TH AND SUMMER
PLACE

SOUTH FIFTH STREET AND SUMMER
Nashville, TN 37206

FINAL SPECIFIC PLAN



This sheet has been signed, sealed, and dated digitally.

Revision		
No.	Date	Description
1	01.13.2023	ADDENDUM 2

SITE DETAILS

C904

44287.01
SEPTEMBER 21, 2022